

Communication Software for the Camera

# EOS Utility

Ver. 2.4



## Instruction Manual

### ● Content of this Instruction Manual

- EU is used for EOS Utility.
- Each camera model is displayed as an icon.  
Example: EOS DIGITAL REBEL XT*i*/400D DIGITAL  
→
- displays the relevant camera model.
- In this manual, the windows used in the examples are from Windows XP.
- The or is used as an example for windows and parts displayed when the camera is connected.
- The selection sequence of menus is displayed in ► procedures.  
(Example: Select the [Window] menu ► [Main Window].)
- Square brackets are used to indicate items such as menu names, button names and window names that appear on the computer screen.
- Text inside < > indicates a camera switch name or icon, or a keyboard key name.
- \*\* indicates a reference page.  
Click to move to the relevant page.
- : Marks information that should be read before use.
- : Marks additional information you may find helpful.

### ● Switching Between Pages

- Click on arrows on the bottom right of the screen.
  - ▶ : next page
  - ◀ : previous page
  - ↺ : return to a page you had previously displayed
- Click on the chapter headings on the right side of the screen to switch to the contents page of that chapter. Also, click the item you want to read about on the table of contents to move to the relevant page.

Introduction

Contents at a Glance

Downloading Images

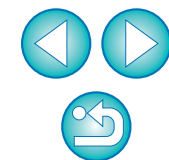
Camera Settings

Remote Shooting

Preferences

Reference

Index



# READ CAREFULLY BEFORE USING!

## CANON SOFTWARE LICENSE AGREEMENT

IMPORTANT - READ THIS AGREEMENT BEFORE USING THE SOFTWARE ON THE CD-ROM IN THIS BOX. BY USING THE SOFTWARE, YOU AGREE TO BE BOUND BY THE TERMS OF THIS AGREEMENT.

This is a license agreement (the [Agreement]) between you and Canon Inc. ([Canon]).

IF YOU DO NOT AGREE TO THE TERMS AND CONDITIONS OF THIS AGREEMENT, DO NOT USE THE SOFTWARE PROGRAM ON THE CD-ROM AND THE USER MANUAL IN THIS BOX (COLLECTIVELY, THE [SOFTWARE]) AND RETURN THE SOFTWARE WITHIN 30 DAYS FROM THE DATE OF PURCHASE TO YOUR POINT OF PURCHASE FOR A REFUND.

In consideration of the right to use the SOFTWARE, you agree to abide by the terms and conditions of this Agreement.

1. **LICENSE:** Canon grants you the non-exclusive right to use the SOFTWARE only on a single computer. You may physically transfer the SOFTWARE from one computer to another provided that the SOFTWARE is used on only one computer at a time. You shall not install or use the SOFTWARE on a network, multiple CPU, multiple site arrangement, or any other hardware configuration where the SOFTWARE is accessible to more than one CPU or to more than one user.

YOU SHALL NOT ASSIGN, SUBLICENSE, RENT, LEASE, LOAN, CONVEY OR OTHERWISE USE, TRANSFER, COPY, TRANSLATE, CONVERT TO ANOTHER PROGRAMMING LANGUAGE, ALTER, MODIFY, DECOMPILE OR DISASSEMBLE THE SOFTWARE, IN WHOLE OR IN PART, EXCEPT AS EXPRESSLY PROVIDED IN THIS AGREEMENT.

2. **BACK-UP COPY:** You may make one copy of the SOFTWARE solely for back-up purposes, or copy the SOFTWARE onto the permanent storage device (e.g. a hard disk) of your computer and retain the original for back-up purposes. Any other copying of the SOFTWARE is a violation of this Agreement. You must reproduce and include the copyright notice on the back-up copy.

3. **SUPPORT AND UPDATES:** Canon is not responsible for providing maintenance or support for use of the SOFTWARE. No updates, fixes or support will be made available for the SOFTWARE.

4. **LIMITED WARRANTY AND LIMITATION OF LIABILITY:** It is your responsibility to choose, maintain and match the hardware and software components of your computer system. Thus Canon does not guarantee uninterrupted service or correction of errors or that the functions or performance of the SOFTWARE will meet your requirements. THE SOFTWARE IS LICENSED ON AN [AS IS] BASIS AND WITHOUT WARRANTY OF ANY KIND. The CD-ROM storing the SOFTWARE is warranted only against defective material under normal use for a period of ninety (90) days after purchase from an authorized Canon dealer as evidenced by your sales receipt. Your sole remedy for a defective CD-ROM shall be replacement of the same without charge when returned by you at your expense to your point of purchase and proven to be defective upon inspection. The replacement CD-ROM will be warranted for the remainder of the original ninety (90) day warranty period of the defective CD-ROM. The limited warranty does not apply if the failure of the CD-ROM resulted from accident, abuse or misapplication of the SOFTWARE and shall not extend to anyone other than the original user of the SOFTWARE.

EXCEPT AS SPECIFICALLY SET FORTH IN THIS PARAGRAPH 4, CANON, CANON'S SUBSIDIARIES, DISTRIBUTORS AND DEALERS DISCLAIM ALL WARRANTIES, EXPRESS OR IMPLIED, INCLUDING ANY WARRANTY OF MERCHANTABILITY OR FITNESS FOR A PARTICULAR PURPOSE, WITH RESPECT TO THE SOFTWARE.

NEITHER CANON NOR ANY OF CANON'S SUBSIDIARIES, DISTRIBUTORS OR DEALERS IS LIABLE FOR ANY DAMAGES HOWSOEVER CAUSED, INCLUDING WITHOUT LIMITATION, DIRECT, CONSEQUENTIAL OR INCIDENTAL LOSS OR DAMAGE INCLUDING LOSS OF

PROFITS, EXPENSE OR INCONVENIENCE HOWSOEVER CAUSED OR ARISING OUT OF THE SOFTWARE OR THE USE THEREOF.

NEITHER CANON, NOR ANY OF CANON'S SUBSIDIARIES, DISTRIBUTORS OR DEALERS SHALL HAVE ANY OBLIGATION TO INDEMNIFY YOU AGAINST ANY CLAIM OR SUIT BROUGHT BY A THIRD PARTY ALLEGING THAT THE SOFTWARE OR THE USE THEREOF INFRINGES ANY INTELLECTUAL PROPERTY OF SUCH THIRD PARTY.

5. **TERM:** This Agreement is effective upon your using the SOFTWARE and remains in effect until expiration of all copyright interests in the SOFTWARE unless earlier terminated. You may terminate this Agreement by destroying the SOFTWARE. This Agreement will also terminate without notice to you if you fail to comply with any of the terms of this Agreement and you must then promptly return the SOFTWARE. In addition, Canon may enforce its other legal rights.

6. **U.S. GOVERNMENT RESTRICTED RIGHTS NOTICE:** The SOFTWARE is provided with restricted rights. Use, duplication or disclosure is subject to restrictions as set forth in either subparagraph (c) (1) (ii) of the Rights in Technical Data and Computer software clause at DFARs 252.227-7013 or subparagraph (c) (1) and (2) of the Commercial Computer Software Restricted Rights Clause at FAR 52.227-19, as applicable.

7. **SEVERABILITY:** In the event that any provision of this Agreement is declared or found to be illegal by any court or tribunal of competent jurisdiction, such provision shall be null and void with respect to the jurisdiction of that court or tribunal and all the remaining provisions of this Agreement shall remain in full force and effect.

8. **CONTROLLING LAW:** The terms of this Agreement as it relates to purchases of the Software in the United States of America shall be governed and construed in all respects in accordance with the laws and regulations of the State of New York, without reference to choice of law principles. The terms of this Agreement as it relates to purchases of the Software in Canada shall be governed by the laws of the province of Ontario.

9. **OWNERSHIP:** All rights, including but not limited to copyrights and trade secret rights, to the SOFTWARE belong to Canon, its affiliated corporations and third party licensors. Your use of the SOFTWARE is subject to the United States, Canada and other applicable copyright and trademark laws and nothing in this Agreement constitutes a waiver of the rights of Canon, its affiliated corporations and third party licensors under such laws. Nothing contained in Paragraph 1 shall be construed to give Canon any ownership rights in any images, graphics or textual material that you save in connection with the Software.

10. **ACKNOWLEDGEMENT:** BY USING THE SOFTWARE, YOU ACKNOWLEDGE THAT YOU HAVE READ THIS AGREEMENT, UNDERSTOOD IT, AND AGREE TO BE BOUND BY ITS TERMS AND CONDITIONS. YOU ALSO AGREE THAT THIS AGREEMENT IS THE COMPLETE AND EXCLUSIVE STATEMENT OF AGREEMENT BETWEEN YOU AND CANON CONCERNING THE SUBJECT MATTER HEREOF AND SUPERSEDES ALL PROPOSALS OR PRIOR AGREEMENTS, VERBAL OR WRITTEN, AND ANY OTHER COMMUNICATIONS BETWEEN THE PARTIES RELATING TO THE SUBJECT MATTER HEREOF. NO AMENDMENT TO THIS AGREEMENT SHALL BE EFFECTIVE UNLESS SIGNED BY A DULY AUTHORIZED OFFICER OF CANON.

Introduction

Contents at a Glance

Downloading Images

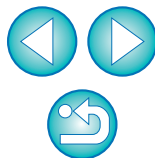
Camera Settings

Remote Shooting

Preferences

Reference

Index



EOS Utility (hereinafter EU) is software for communication with your EOS DIGITAL camera. By connecting the camera and computer with the cable provided with the camera, you can download to your computer images saved in the camera's memory card as well as set various camera settings or shoot remotely from EU on your computer.

## Main Features of EU

From EU, you can control the camera remotely and perform the following main features.

- **Batch download to your computer images saved in the camera's memory card.**
  - You can also download to your computer only images you have selected.
- **Set various camera settings from your computer.**
- **Shoot remotely by controlling the camera from your computer.**
  - You can also shoot remotely by operating the camera's shutter button.
  - Preset a time allowing the camera to shoot automatically with timer shooting.
- **When downloading images or shooting remotely, view/check images with the linked Digital Photo Professional.**

## System Requirements


<b>OS</b>	Windows Vista* <sup>1</sup>	
	Windows XP Professional/Home Edition* <sup>2</sup>	
	Windows 2000 Professional* <sup>3</sup>	
<b>Computer</b>	PC with one of the above OS preinstalled and a USB port as a standard feature or an OHCI-compliant IEEE1394 port (Upgraded machines not supported)	
	.NET Framework 2.0 or later is required.* <sup>4</sup>	
<b>CPU</b>	Windows Vista	1.3GHz Pentium or higher
	Windows XP, 2000	750MHz Pentium or higher
<b>RAM</b>	Windows Vista	Minimum 512MB
	Windows XP, 2000	Minimum 256MB
<b>Interface</b>	Hi-Speed USB or IEEE1394	
<b>Display</b>	Screen resolution: 1024 x 768 pixels or more Color quality: Medium (16 bit) or more	


- \*<sup>1</sup> Compatible with 32-bit/64-bit systems for all versions except Starter Edition
- \*<sup>2</sup> Compatible with Service Pack 2 \*<sup>3</sup> Compatible with Service Pack 4
- \*<sup>4</sup> .NET Framework is Microsoft software. It is installed together with EU.

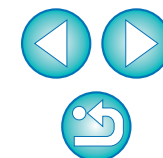
## Supported Cameras and Supported Images

Can be used for RAW and JPEG images shot with the cameras below.

EOS-1D Mark II N	EOS-1Ds Mark II	EOS-1D Mark II
EOS-1Ds	EOS-1D	EOS 5D
EOS 30D	EOS 20D	EOS 10D
EOS DIGITAL REBEL XTi/400D DIGITAL	EOS DIGITAL REBEL XT/350D DIGITAL	EOS DIGITAL REBEL/300D DIGITAL
EOS D60	EOS D30	—

Cameras indicated with  in the table cannot be used with Windows Vista.

Cameras other than those indicated with  in the table cannot be used with a Windows Vista 64-bit system.





# Contents at a Glance

## Downloading images from your camera to a computer

- To batch download all the images to a computer → p.12
- To download to a computer selected images only → p.13
- To download images using a third-party card reader → p.14

## Camera settings from a computer

- To set the camera owner name and date/time → p.17
- To set a Picture Style and apply to the camera → p.21
- To apply a Picture Style file to the camera → p.24
- To register a personal white balance in the camera → p.25
- To set a JPEG quality and apply to the camera → p.26
- To adjust a white balance setting and apply to the camera → p.27
- To set the parameters and apply to the camera → p.28
- To set the color matrix and apply to the camera → p.29
- To set a personal function and apply to the camera → p.31

## Remote shooting

- To shoot by controlling the camera from a computer → p.42
- To shoot by operating the camera → p.44
- To shoot with the timer → p.44

## Functions for use with other accessories sold separately

- To shoot with the Wireless File Transmitter WFT-E1/E1A and check the images in real time → p.52
- To start up the WFT-E1/E1A software from EU → p.53
- To start up the Original Data Security Kit OSK-E3 software from EU → p.53

Introduction

Contents at a Glance

Downloading Images

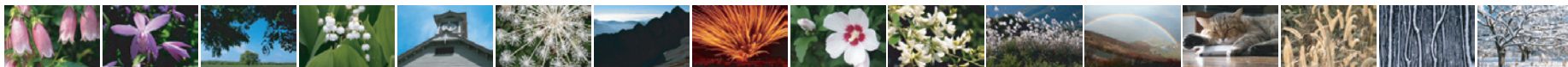
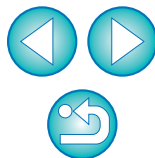
Camera Settings

Remote Shooting

Preferences

Reference

Index





# 1 Downloading Images to your Computer



Basic operation such as preparing for downloading images to your computer (connecting your camera and computer), starting up EU, downloading images from your camera to your computer and exiting EU are explained here.

Preparing to Download Images .....	5
Connecting the REBEL XTi/400D and a Computer .....	5
Connecting a Camera with the [Communication] Settings and a Computer .....	6
Setting the [Communication] Settings .....	6
Connecting the Camera and Computer .....	6
Connecting the 1D Mk II N, 1Ds Mk II, 1D Mk II and a Computer .....	7
Connecting the 1Ds, 1D and a Computer .....	8
Connecting the D60, D30 and a Computer .....	9
Starting up EU .....	9
Starting up EU with Cameras other than the 1D Series ...	10
Starting up EU with the 1D Series Cameras .....	11
Batch Downloading Images to Your Computer .....	12
Downloading Selected Images to Your Computer .....	13
Downloading Images with a Card Reader .....	14
Downloading Images Using Digital Photo Professional ...	14
Downloading Images Using ZoomBrowser EX .....	14
Downloading Images without Using Canon Software ...	14
Exiting EU .....	15

Introduction

Contents at a Glance

Downloading Images

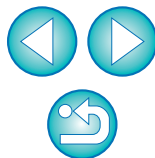
Camera Settings

Remote Shooting

Preferences

Reference

Index



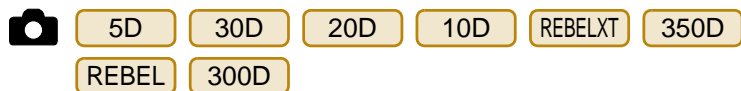
# Preparing to Download Images

To download to your computer images shot with your camera, you will need to connect your camera and computer using the interface cable provided with your camera.

The connection process will vary depending on your camera model, so follow the connection instructions for your camera model below.

- Connecting the **REBELXTi** **400D** and a Computer ([Description on the right](#))

- Connecting a Camera with the [Communication] settings and a Computer ([p.6](#))



- Connecting the **1D Mk II N** **1Ds Mk II** **1D Mk II** and a Computer ([p.7](#))

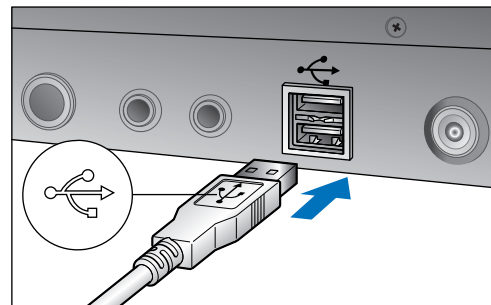
- Connecting the **1Ds** **1D** and a Computer ([p.8](#))

- Connecting the **D60** **D30** and a Computer ([p.9](#))

## Connecting the REBEL XTi/400D and a Computer

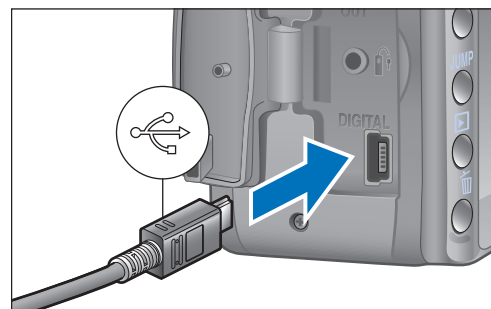
Connect the camera and computer using the interface cable provided with your camera.

- 1 **Connect the large plug of the cable into the USB port of your computer.**



- For the location and direction of the USB port, refer to the computer User's Manual.

- 2 **Connect the small plug of the cable into the <DIGITAL> terminal on your camera.**



- Connect with the <USB> mark on the plug facing the front of the camera.
- Image downloading preparation is now complete. Continue with "Starting up EU" ([p.9](#)).

Introduction

Contents at a Glance

Downloading Images

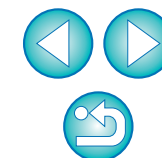
Camera Settings

Remote Shooting

Preferences

Reference

Index



## Connecting a Camera with the [Communication] Settings and a Computer



Set the [Communication] settings on the camera's menu first, and then connect your camera and computer.

## Setting the [Communication] Settings

For the camera and computer to be able to communicate, set the [Communication] setting on your camera's menu.

**1** Set the camera's power switch to **< ON >**.

**2** Set the camera's **[Communication] settings**.

- Set the [Communication] settings for your camera model as shown in the table below.

Camera Model	Menu	Setting
5D	[ <b>1</b> Communication ]	[ PC connect. ]
30D	[ <b>1</b> Communication ]	[ Print/PC ]
20D	[ <b>1</b> Communication ]	[ Normal ]
10D	[ Communication ]	[ Normal ]
REBELXT 350D	[ <b>1</b> 2 Communication ]	[ PC connection ]
REBEL 300D	[ <b>1</b> 2 Communication ]	[ Normal ]

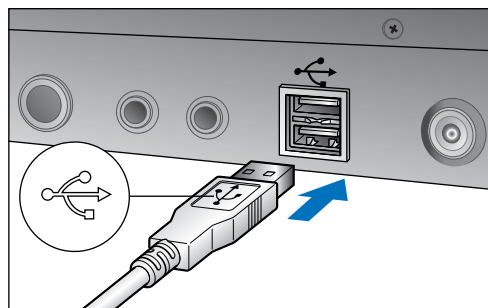
**3** Set the camera's power switch to **< OFF >**.

**!** Make sure you set the [Communication] settings without the camera and computer being connected; otherwise an error will occur.

## Connecting the Camera and Computer

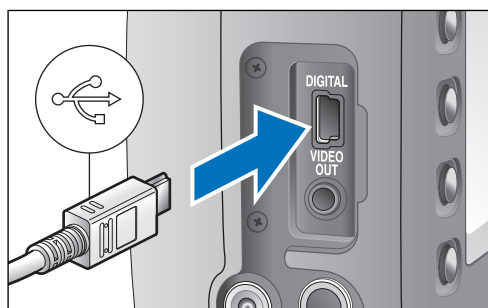
Connect the camera and computer using the interface cable provided with your camera.

**1** Connect the large plug of the cable into the USB port of your computer.



- For the location and direction of the USB port, refer to the computer User's Manual.

**2** Connect the small plug of the cable into the **< DIGITAL >** terminal on your camera.



- Connect with the **< USB >** mark on the plug facing the front of the camera.
- Image downloading preparation is now complete. Continue with "Starting up EU" (p.9).

Introduction

Contents at a Glance

Downloading Images

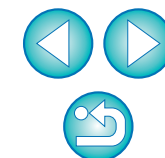
Camera Settings

Remote Shooting

Preferences

Reference

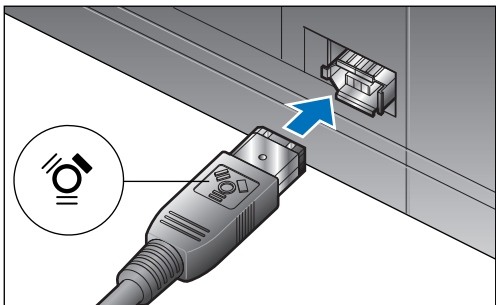
Index



## Connecting the 1D Mk II N, 1Ds Mk II, 1D Mk II and a Computer

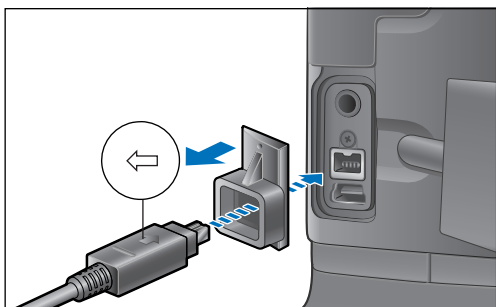
Attach the cable protector to the IEEE1394 interface cable (IFC-200D4) provided with your camera, and then connect the camera and computer.

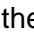
### 1 Connect the plug of the cable with the < > mark into the computer's IEEE1394 port.



- For the location and direction of the IEEE1394 port, refer to the computer User's Manual.

### 2 Attach the cable protector to the plug with the < > mark, and then connect to the < DIGITAL > terminal on your camera.



- Connect with the <  > mark on the plug facing the top of the camera.
- For cameras not provided with the cable protector, connect the plug directly to the camera.
- Image downloading preparation is now complete. Continue with "Starting up EU" (p.9).



- When connecting the interface cable plug to the computer and camera, make sure you match the shape of the plug with the shape of the IEEE1394 port before connecting. The camera or computer may become damaged if connected incorrectly.
- Although you can use the USB interface cable (IFC-400PCU) provided with your camera to connect the camera and computer, EU communication will not be possible. Use the IEEE1394 interface cable (IFC-200D4).



If your computer has a 4-pin type IEEE1394 port, you will need to use a 4-pin – 4-pin type Canon interface cable (sold separately).

Introduction

Contents at a Glance

Downloading Images

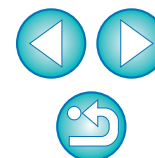
Camera Settings

Remote Shooting

4 Preferences

Reference

Index

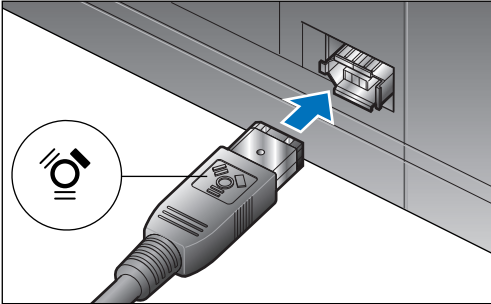




## Connecting the 1Ds, 1D and a Computer

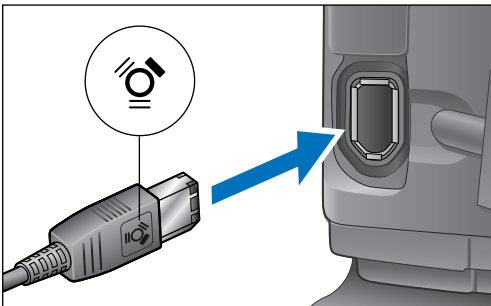
Connect the camera and computer with the IEEE1394 interface cable (IFC-450D6) provided with your camera.


### 1 Connect the cable's plug to the IEEE1394 port on the computer.




- Both plugs of the cable are the same, so connect either plug.
- For the location and direction of the IEEE1394 port, refer to the computer User's Manual.

### 2 Connect the cable's plug to the camera's <DIGITAL> terminal.



- Connect with the <  > mark on the plug facing the back of the camera.
- Both plugs of the cable are the same, so connect either plug.
- Image downloading preparation is now complete. Continue with "Starting up EU" (p.9).

**!** When connecting the interface cable plug to the computer and camera, make sure you match the shape of the plug with the shape of the IEEE1394 port before connecting. The camera or computer may become damaged if connected incorrectly.

 If your computer has a 4-pin type IEEE1394 port, you will need to use a 4-pin – 6-pin type Canon interface cable (sold separately).

Introduction

Contents at a Glance

Downloading Images

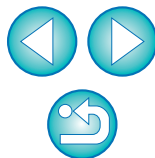
Camera Settings

Remote Shooting

4 Preferences

Reference

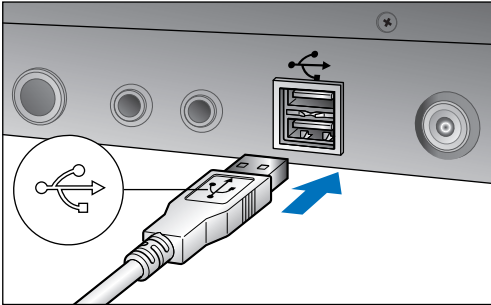
Index




## Connecting the D60, D30 and a Computer

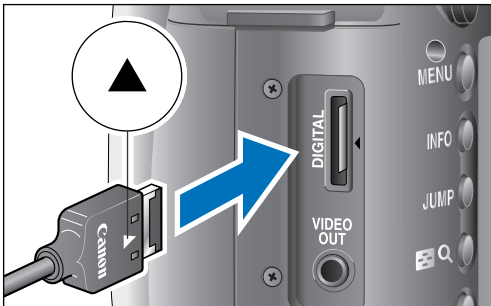
Connect the camera and computer with the interface cable provided with your camera.


- 1 **Connect the plug of the cable with the <  > mark into the computer's USB port.**



- For the location and direction of the USB port, refer to the computer User's Manual.

- 2 **Connect the plug of the cable with the <  > mark to the < DIGITAL > terminal on your camera.**



- Connect with the <  > mark on the plug facing the back of the camera.
- Image downloading preparation is now complete. Continue with "Starting up EU" ([Description on the right](#)).

## Starting up EU

When the camera's power switch is set to < ON >, EU will start up, and the camera and computer will be able to communicate.

The start up process will vary depending on your camera model, so follow the start up instructions for your camera model below.

- Starting up EU with Cameras other than the 1D Series ([p.10](#))



- Starting up EU with the 1D Series Cameras ([p.11](#))



Introduction

Contents at a Glance

Downloading Images

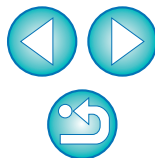
Camera Settings

Remote Shooting

4 Preferences

Reference

Index

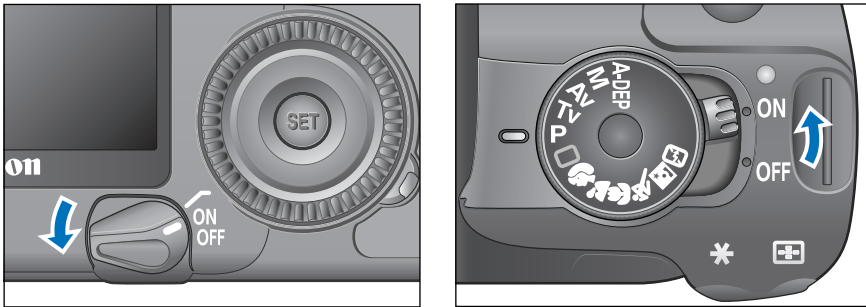


## Starting up EU with Cameras other than the 1D Series



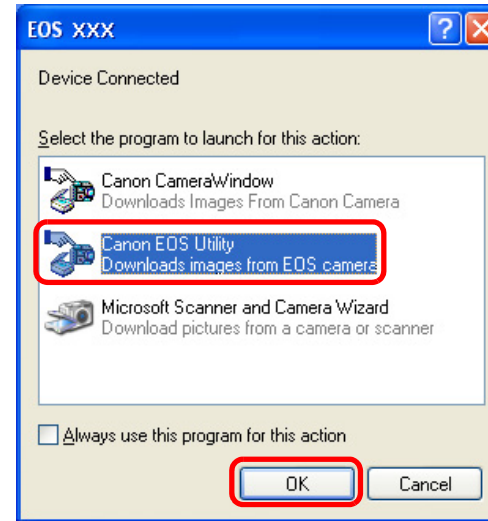
When the camera's power switch is set to < ON >, EU will start up automatically.

### 1 Set the camera's power switch to < ON >.

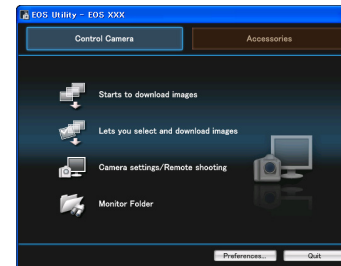


- Communication between the camera and the computer begins and the above dialog box appears before the dialog box in step 2 is displayed.
- With Windows 2000, a dialog box with a message such as [Found New Hardware] is displayed and then automatically disappears.

### 2 Select [Canon EOS Utility] and then click the [OK] button.



### EU Main window



→ EU starts up, the main window appears, and your camera and computer can now communicate. Continue with "Batch Downloading Images to Your Computer" (p.12).

- With Windows 2000, the [Event on device] dialog box appears. Select [Canon EOS Utility] and then click the [OK] button to start up EU.
- This procedure is only necessary when connecting your camera and computer for the first time. From the next time you connect, EU will start up when you set your camera's power switch to < ON >.
- With the 30D, REBELXTi, 400D, the camera's LCD monitor blinks when EU starts up.
- With Windows Vista, if the window in step 2 is not displayed even when you set the camera's power switch to < ON >, double-click the [EOS Utility] icon on your desktop to start up EU.

Introduction

Contents at a Glance

Downloading Images

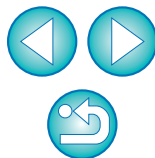
Camera Settings

Remote Shooting

Preferences

Reference

Index



## Starting up EU with the 1D Series Cameras



1D Mk II N

1Ds Mk II

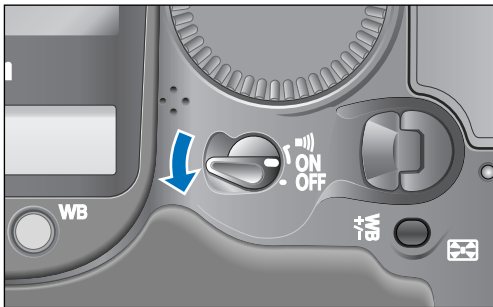
1D Mk II

1Ds

1D

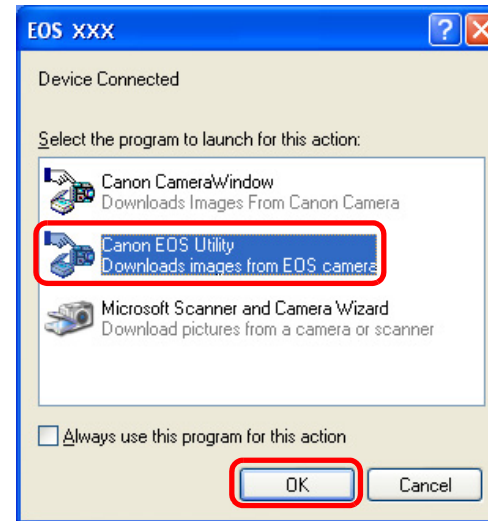
When the camera's power switch is set to < ON >, EU will start up automatically.

### 1 Set the camera's power switch to < ON >.

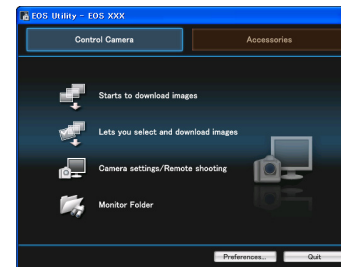


- Communication between the camera and the computer begins and the dialog box in step 2 is displayed.
- With Windows 2000, a dialog box with a message such as [Found New Hardware] may be displayed.

### 2 Select [Canon EOS Utility] and then click the [OK] button.

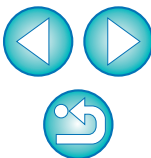


#### EU Main window



- EU starts up, the main window appears, and your camera and computer can now communicate. Continue with "Batch Downloading Images to Your Computer" (p.12).

- With Windows 2000, the [Event on device] dialog box appears. Select [Canon EOS Utility] and then click the [OK] button to start up EU.
- This procedure is only necessary when connecting your camera and computer for the first time. From the next time you connect, EU will start up when you set your camera's power switch to < ON >.
- With Windows Vista, if the window in step 2 is not displayed even when you set the camera's power switch to < ON >, double-click the [EOS Utility] icon on your desktop to start up EU.



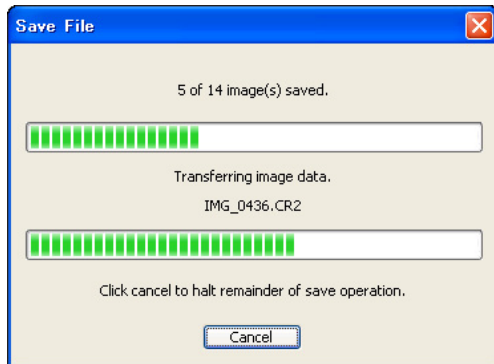


# Batch Downloading Images to Your Computer

You can batch download to your computer all the images saved in your camera's memory card.

The downloaded images are sorted by date into folders and are then displayed in the main window of Digital Photo Professional (RAW image processing, viewing and editing software) (hereinafter DPP), which is linked to start up automatically, where you can check them immediately.

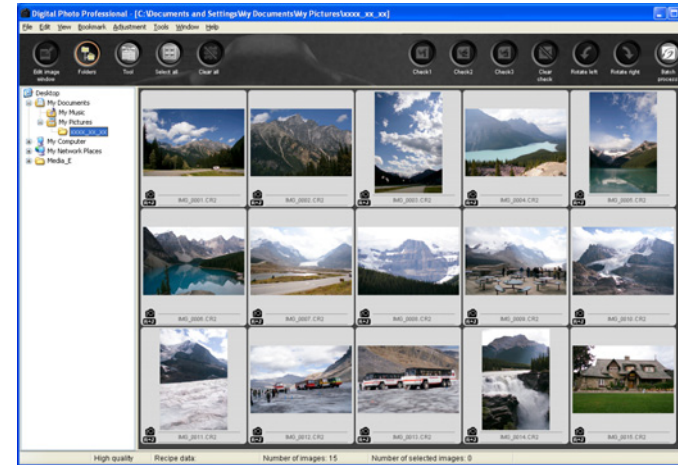
## 1 Click [Starts to download images].



- The [Save File] dialog box appears and image downloading to your computer begins.
- The downloaded images are saved in the [My Pictures] folder.
- When all images have been downloaded, DPP starts up automatically and the downloaded images are displayed in DPP's main window.

## 2 Check the downloaded images.

### DPP Main window



- Check the downloaded images in DPP.  
For details on using DPP, refer to the “Digital Photo Professional Instruction Manual” (PDF electronic manual).
- Continue with “Exiting EU” (p.15).



- When you download images, you can change the software that starts up from DPP to ZoomBrowser EX or another software (p.48).
- You can change images downloaded and the save destination (p.47, p.48).

Introduction

Contents at a Glance

Downloading Images

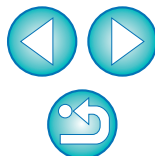
Camera Settings

Remote Shooting

Preferences

Reference

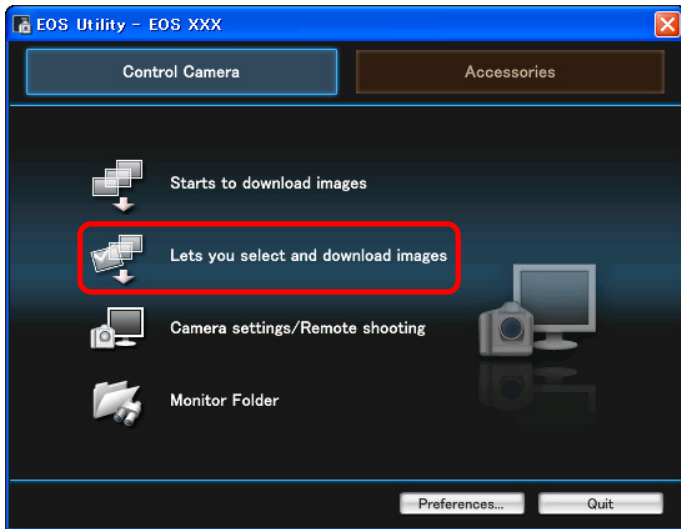
Index



## Downloading Selected Images to Your Computer

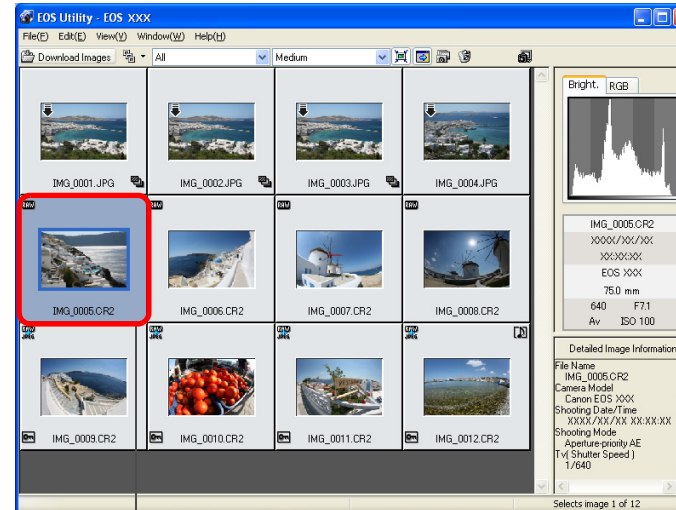
From the images saved in your camera's memory card, you can select the ones you want and download them to your computer.

### 1 Click [Lets you select and download images].



→ A viewer window appears and the images in the memory card are displayed.

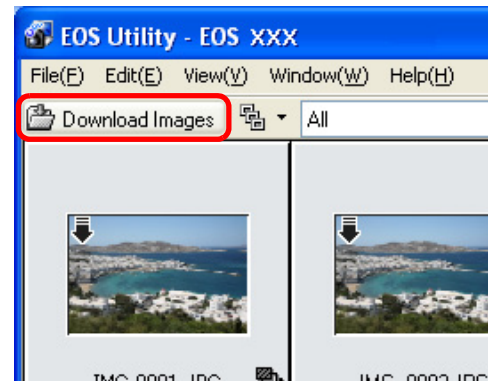
### 2 View and click to select the images to download. Viewer window



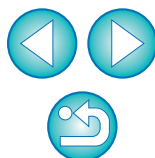
Click

- To select multiple images, click the images to download while holding down the < Ctrl > key.
- To select sequential images, click the first image and then hold down the < Shift > key and click the last image.

### 3 Click the [Download Images] button.



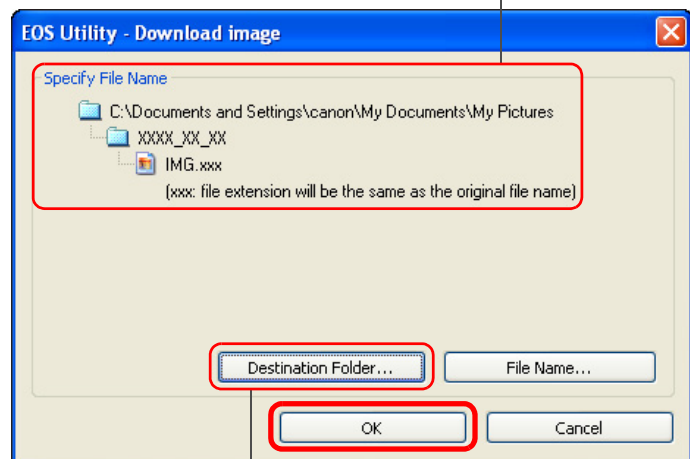
→ The [Download image] dialog box appears.



## 4 Specify the save destination and then click the [OK] button.

Displays the save destination on the computer

### Download image dialog box



Specify the save destination

- The [Save File] dialog box appears and image downloading to your computer begins.
- When all images have been downloaded, DPP starts up automatically and the downloaded images are displayed.
- To switch to the main window, select the [Window] menu ► [Main Window].

## Downloading Images with a Card Reader

For users with a third-party card reader, you can also download to your computer images stored in a memory card using the card reader. However, EU does not support image downloading using a card reader. For this reason, when downloading images using a card reader, use one of the following 3 procedures.

### Downloading Images Using Digital Photo Professional

You can use DPP to download to your computer shot images in a memory card inside a third-party card reader connected to your computer.

For detailed instructions, refer to “Downloading Images Using Your Card Reader” in the “Digital Photo Professional Instruction Manual” (PDF electronic manual).

### Downloading Images Using ZoomBrowser EX

You can use ZoomBrowser EX to download to your computer shot images in a memory card inside a third-party card reader connected to your computer.

For detailed instructions, refer to “Downloading Images Using Your Card Reader” in the “ZoomBrowser EX Instruction Manual” (PDF electronic manual).

### Downloading Images without Using Canon Software

To download images with a card reader without using Canon software such as DPP or ZoomBrowser EX, copy to your computer the [DCIM] folder in the memory card.

For more details about folder structures and files in the memory card, refer to [p.54](#).

Introduction

Contents at a Glance

Downloading Images

Camera Settings

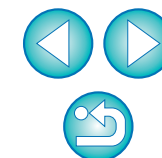
Remote Shooting

4 Preferences

Reference

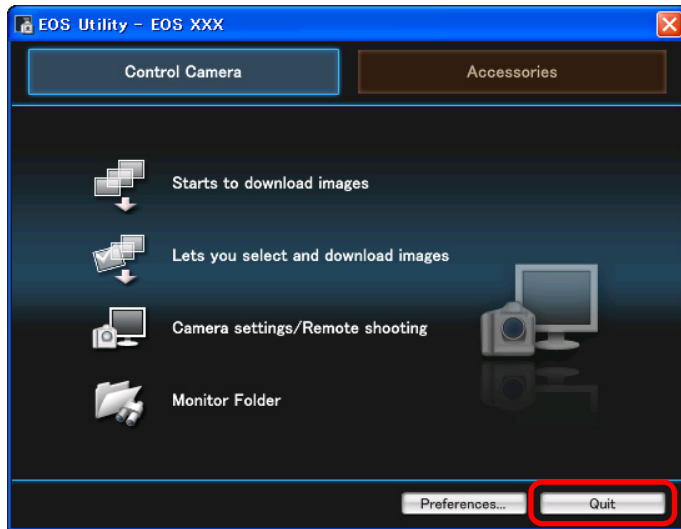
Index

 For a list of viewer window functions, refer to [p.57](#).



# Exiting EU

1 Click the [Quit] button.



→ The window closes and EU exits.

2 Turn the camera's power switch to < OFF >.

3 Disconnect the cable from the camera and computer.

- Do not pull on the cable; hold the plug and pull out.

Introduction

Contents at a Glance

Downloading Images

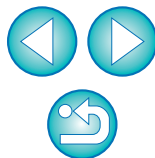
Camera Settings

Remote Shooting

4 Preferences

Reference

Index





# 2 Setting the Camera from Your Computer



This section explains how to set the camera's functions from EU.

Setting the Camera Owner's Name and Date/Time ...	17
Available Settings by Camera Model.....	18
Setting up Camera Functions .....	19
Available Settings by Camera Model.....	20
Setting Picture Styles and Applying to the Camera....	21
Selecting a Picture Style and Applying to the Camera... ..	21
Changing Picture Style Settings and Applying to the Camera.....	22
Customizing Picture Styles and Applying to the Camera.....	23
Applying Picture Style Files to the Camera .....	24
Registering Personal White Balance in the Camera ...	25
Setting JPEG Quality and Applying to the Camera ....	26
Adjusting White Balance and Applying to the Camera... ..	27
Setting Parameters and Applying to the Camera .....	28
Setting a Color Matrix and Applying to the Camera ...	29
Selecting a Color Matrix to be Applied to the Camera ...	29
Customizing a Color Matrix and Applying to the Camera.....	30
Customizing Camera Functions (Personal Functions)... ..	31
Description of Personal Functions.....	32
Checking Settings and Application to Camera .....	39
Saving and Loading Settings.....	39
Saving Settings to Your Computer .....	39
Loading Settings and Applying to the Camera .....	40

Introduction

Contents at  
a Glance

Downloading  
Images

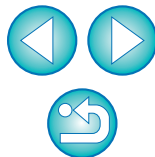
Camera  
Settings

Remote  
Shooting

4  
Preferences

Reference

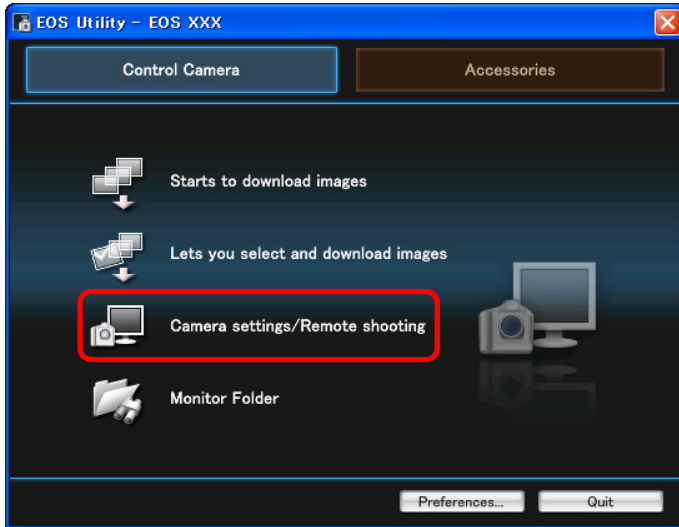
Index



# Setting the Camera Owner's Name and Date/Time

You can set and apply to the camera, the camera owner's name and date/time, and record these as shooting information of shot images.

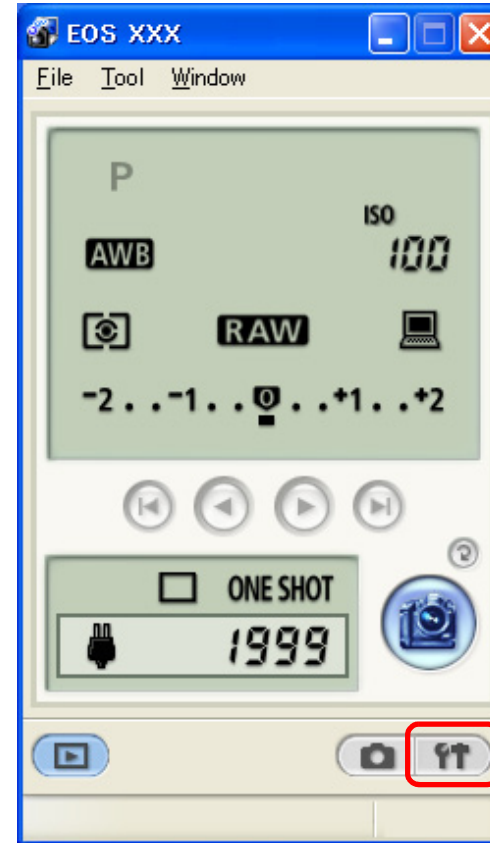
- 1 Connect your camera and computer, and then start up EU (p.5, p.9).
- 2 Click [Camera settings/Remote shooting].



→ The camera settings/remote shooting window appears.

- 3 Click the [  ] button.

Camera settings/remote shooting window



→ The basic settings window appears.

Introduction

Contents at a Glance

Downloading Images

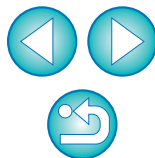
Camera Settings

Remote Shooting

Preferences

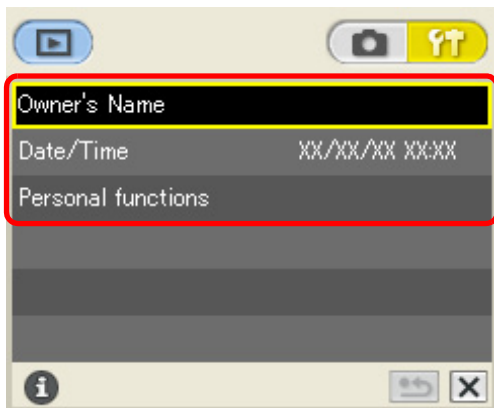
Reference

Index



## 4 Click the required setting and specify each one.

### Basic settings window



- Available settings for the camera that is connected are displayed in the basic settings window. For more details, refer to “Available Settings by Camera Model” ([Description on the right](#)).

## 5 Click the [ X ] button to close the basic settings window.

- To return to the main window, select the [Window] menu ► [Main Window].

## Available Settings by Camera Model

Setting	1D Mk II N 1Ds Mk II 1D Mk II	1Ds 1D	30D REBELXTi 400D	5D 10D REBEL D60	20D 350D 300D D30
Owner's name	<input type="radio"/>	<input type="radio"/>	<input type="radio"/>	<input type="radio"/>	<input type="radio"/>
Date/time	<input type="radio"/>	<input type="radio"/>	<input type="radio"/>	<input type="radio"/>	<input type="radio"/>
Card initialization	–	<input type="radio"/>	<input type="radio"/>	<input type="radio"/>	<input type="radio"/>
Firmware	–	–	<input type="radio"/>	–	–
Personal functions	<input type="radio"/>	<input type="radio"/>	–	–	–

### Owner's name

- You can enter up to 31 characters and register the camera owner's name.

### Date/time

- You can set the camera's date and time.

### Card initialization

- You can initialize the memory card inserted in the camera.

**!** Initializing a memory card deletes all the data and the data cannot be recovered. Check carefully before initializing.

### Firmware

- You can display the version of the camera's firmware.
- You can update the firmware by clicking on this item.

### Personal functions

- You can customize the individual functions of the camera to meet your needs. Refer to [p.31](#) about setting up Personal Functions.

Introduction

Contents at a Glance

Downloading Images

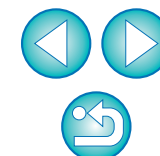
Camera Settings

Remote Shooting

4 Preferences

Reference

Index

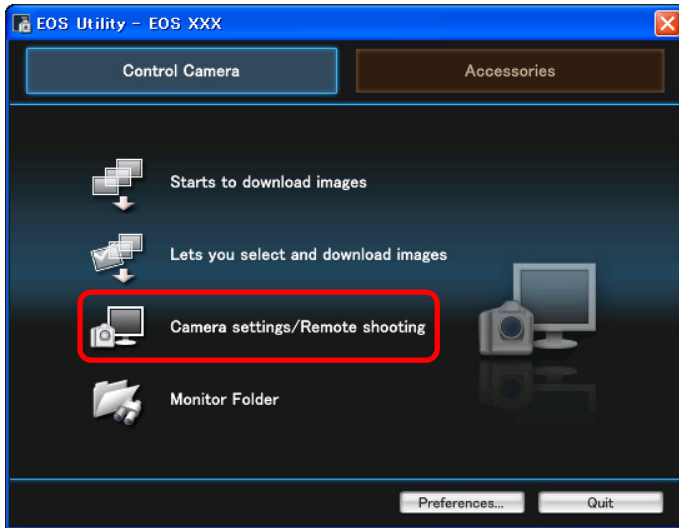


# Setting up Camera Functions

You can set and apply to the camera Picture Styles, personal white balance, JPEG quality, white balance adjustment, parameters and color matrices.

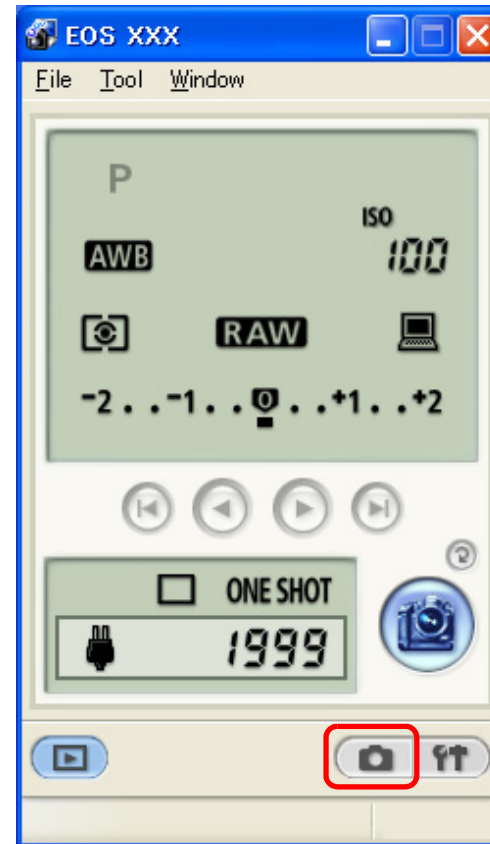
**1** Connect your camera and computer, and then start up EU (p.5, p.9).

**2** Click [Camera settings/Remote shooting].



→ The camera settings/remote shooting window appears.

**3** Click the [  ] button.



→ The shot settings window appears.

Introduction

Contents at a Glance

Downloading Images

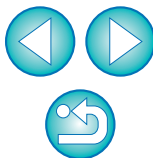
Camera Settings

Remote Shooting

Preferences

Reference

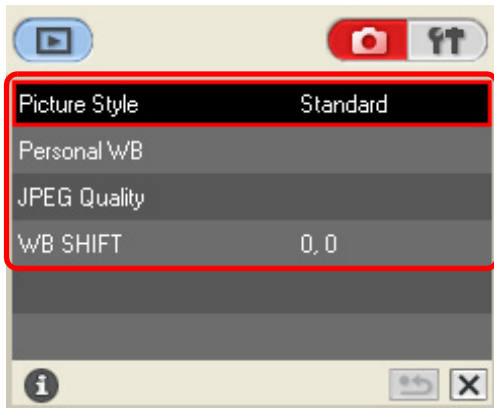
Index





## 4 Click the required setting and specify each one.

### Shot settings window



- Available settings for the camera that is connected are displayed in the shot settings window. For more details, refer to “Available Settings by Camera Model” ([Description on the right](#)).

## 5 Click the [ X ] button to close the shot settings window.

- To return to the main window, select the [Window] menu ► [Main Window].

## Available Settings by Camera Model

Setting	1D Mk II N	1Ds Mk II 1D Mk II	1Ds 1D	5D 30D REBELXTi 400D	20D REBELXT 350D
Picture Style (p.21)	<input type="radio"/>	–	–	<input type="radio"/>	–
Personal white balance (p.25)	<input type="radio"/>	<input type="radio"/>	<input type="radio"/>	–	–
JPEG quality (p.26)	<input type="radio"/>	<input type="radio"/>	–	–	–
White balance adjustment (p.27)	<input type="radio"/>	<input type="radio"/>	–	<input type="radio"/>	<input type="radio"/>
Parameters (p.28)	–	<input type="radio"/>	<input type="radio"/>	–	–
Color matrix (p.29)	–	<input type="radio"/>	–	–	–

- With the **1D** **REBEL** **300D** **D60** **D30**, you cannot set up the camera’s functions.

Introduction

Contents at  
a Glance

Downloading  
Images

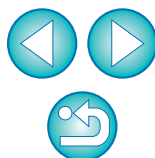
Camera  
Settings

Remote  
Shooting

4  
Preferences

Reference

Index



## Setting Picture Styles and Applying to the Camera



You can set and apply Picture Styles to the camera, in the same way as operating from the camera. You can change the values for [Sharpness], [Contrast], [Saturation] and [Color tone] of each Picture Style and register up to three of your own Picture Styles in the camera as user-defined settings.

You can also register Picture Style files in the camera as user-defined settings you have downloaded from the Canon's website or created with Picture Style Editor (Picture Style file creating software) (hereinafter PSE) and saved to your computer.

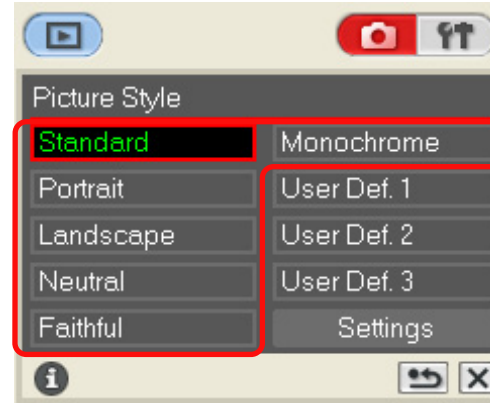
## Selecting a Picture Style and Applying to the Camera

1 Click [Picture Style].



→ The [Picture Style] window appears.

2 Click the Picture Style to be set in the camera.  
Picture style window



→ The setting is applied to the camera and the display returns to the shot settings window.

Introduction

Contents at a Glance

Downloading Images

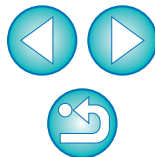
Camera Settings

Remote Shooting

Preferences

Reference

Index



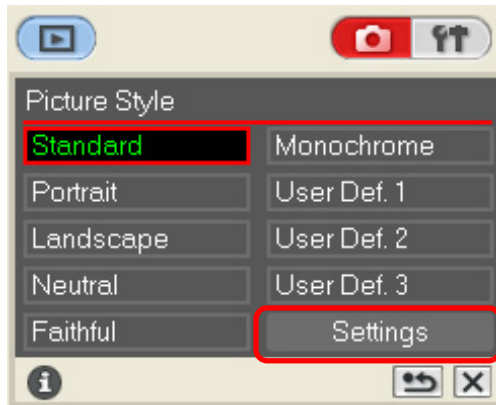
## Changing Picture Style Settings and Applying to the Camera

You can set your own Picture Style [Sharpness], [Contrast], [Saturation] and [Color tone] and apply them to the camera, in the same way as operating from the camera.

### 1 Click [Picture Style] (p.21).

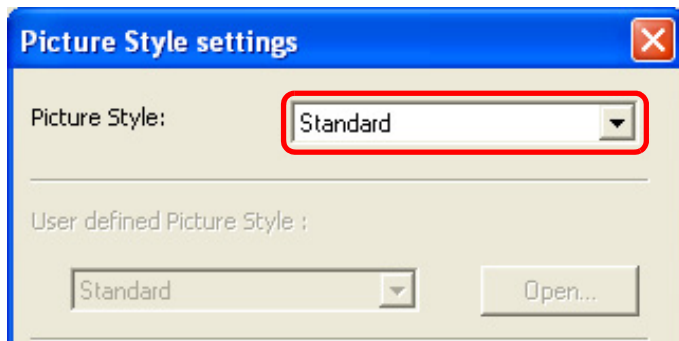
→ The [Picture Style] window appears.

### 2 Click [Settings].



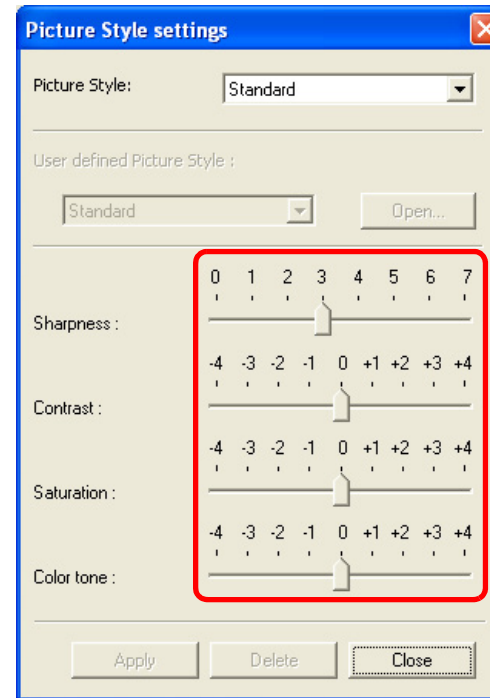
→ The [Picture Style settings] dialog box appears.

### 3 Select a Picture Style from the [Picture Style] list box.

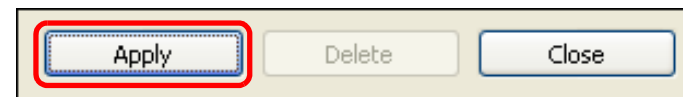


→ If you select [Monochrome], the [Filter effect] and [Toning effect] list boxes appear.

### 4 Drag the slider for each item left or right.



### 5 Click the [Apply] button.



→ The [Confirm settings] dialog box appears.

### 6 Check the settings and click the [OK] button.

→ The settings are registered in the camera.

### 7 Click the [Close] button.

→ The [Picture Style settings] dialog box closes.

### 8 In the [Picture Style] window (the window in Step 2), click the Picture Style whose setting values you have changed.

→ The setting is applied to the camera and the display returns to the shot settings window.

Introduction

Contents at a Glance

Downloading Images

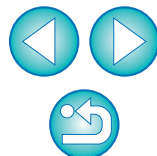
Camera Settings

Remote Shooting

Preferences

Reference

Index



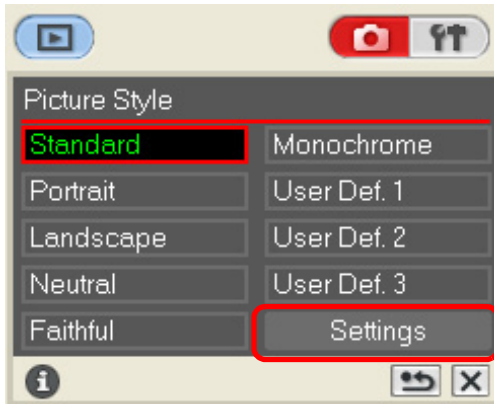
## Customizing Picture Styles and Applying to the Camera

You can set your own Picture Style item, [Sharpness], [Contrast], [Saturation] and [Color tone] values and register up to three of these as user-defined settings in your camera, in the same way as operating from the camera.

### 1 Click [Picture Style] (p.21).

→ The [Picture Style] window appears.

### 2 Click [Settings].

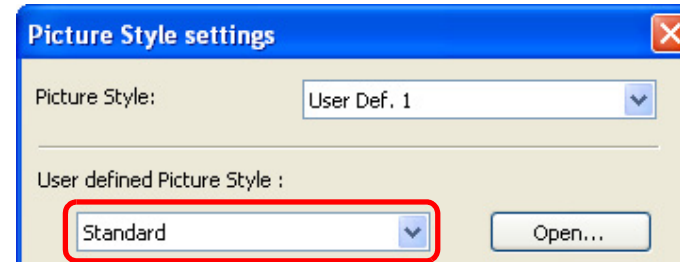


→ The [Picture Style settings] dialog box appears.

### 3 Select one of [User Def. 1] to [User Def. 3] from the [Picture Style] list box.

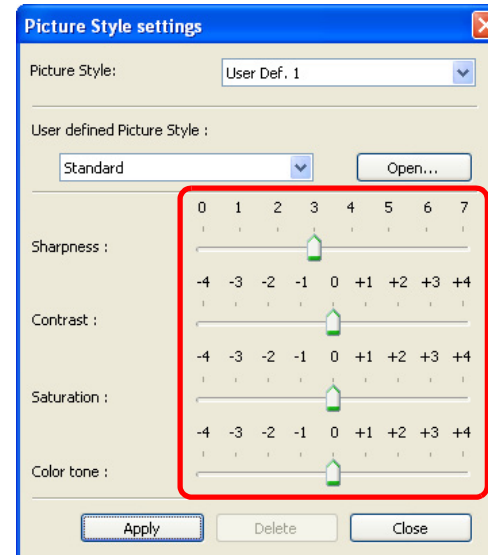


### 4 Select a Picture Style from the [User defined Picture Style] list box.



→ If you select [Monochrome], the [Filter effect] and [Toning effect] list boxes appear.

### 5 Drag the slider for each item left or right.



● The steps that follow are the same as step 5 to step 8 on p.22.

Introduction

Contents at a Glance

Downloading Images

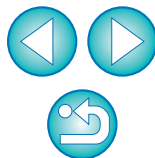
Camera Settings

Remote Shooting

Preferences

Reference

Index





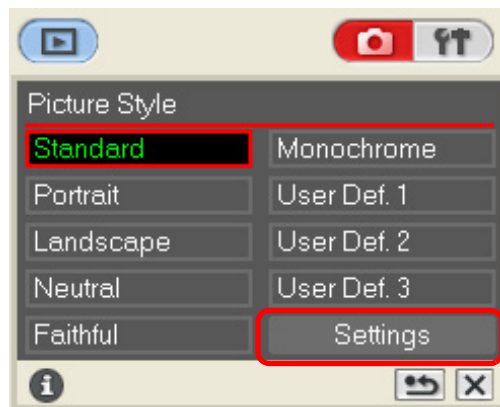
# Applying Picture Style Files to the Camera

You can register up to three Picture Style files downloaded from the Canon's website or created with PSE and saved to your computer, as user-defined settings in your camera.

1 Click [Picture Style] (p.21).

→ The [Picture Style] window appears.

2 Click [Settings].

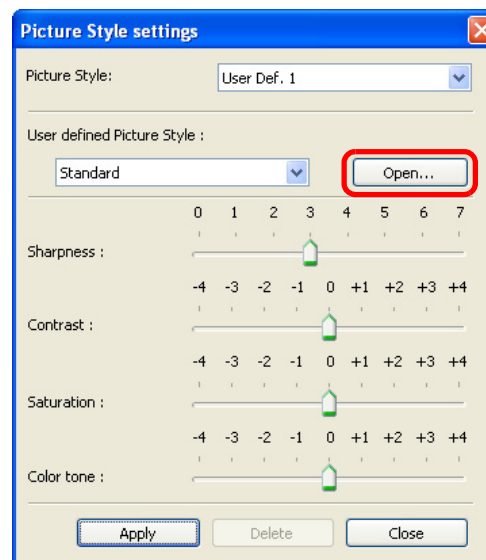


→ The [Picture Style settings] dialog box appears.

3 Select one of [User Def. 1] to [User Def. 3] from the [Picture Style] list box.

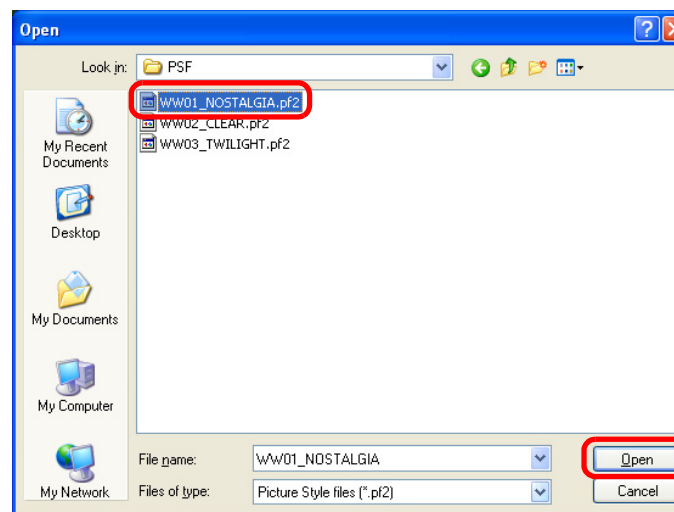


4 Click the [Open] button.



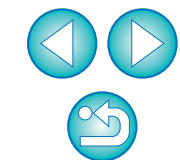
→ The [Open] window appears.

5 Select a Picture Style file and then click the [Open] button.



→ The Picture Style file is loaded and applied to the camera.

• The steps that follow are the same as step 5 to step 8 on p.22.





- A Picture Style file is an extended function of Picture Style. For more details on Picture Style files, refer to the Canon's website.
- The Picture Style files that you can apply to the camera are files with the ".PF2" extension only.
- For details on using PSE, refer to the "Picture Style Editor Instruction Manual" (PDF electronic manual).

## Registering Personal White Balance in the Camera



With RAW Image Task (RAW image processing software), you can adjust the white balance of shot RAW images and you can save those results as white balance files.

In EU, you can register up to three white balance files in the camera as personal white balance and use them when you shoot in specific environments.

For instructions on how to save white balance files using RAW Image Task, refer to "Adjusting RAW Images" in the "ZoomBrowser EX Instruction Manual" (PDF electronic manual).

### 1 Click [Personal WB].



→ The [Personal white balance settings] dialog box appears.

Introduction

Contents at a Glance

Downloading Images

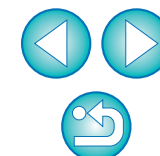
Camera Settings

Remote Shooting

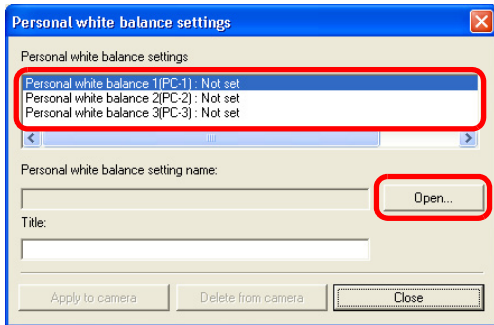
4 Preferences

Reference

Index



## 2 Select the personal white balance to be registered and click the [Open] button.



→ The [Open] dialog box appears.

## 3 Open the folder containing the saved white balance file, select the file and then click the [Open] button.

→ The white balance file is loaded.

- The white balance files that you can register to the camera are files with the “.WBD” extension.

## 4 Enter a title into the [Title] input field.

## 5 Click the [Apply to camera] button.

→ The personal white balance is registered on the camera.

- To register another setting, repeat step 2 to step 5.

## 6 Click the [Close] button.

→ The [Personal white balance settings] dialog box closes and the display returns to the shot settings window.

## 7 Select a registered personal white balance on the camera.

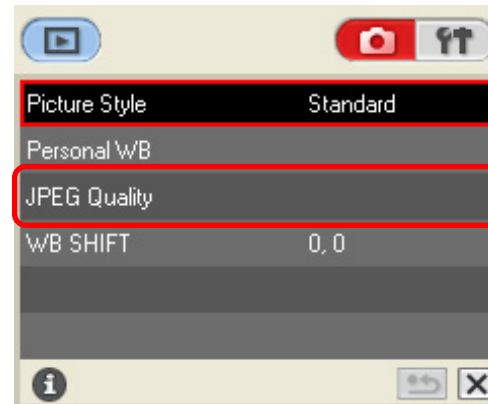
- Select a registered personal white balance (PC-1 to 3) as the white balance for your shot.
- For selecting personal white balance, refer to “Selecting the White Balance” in the camera’s Instruction Manual provided with your camera.

## Setting JPEG Quality and Applying to the Camera



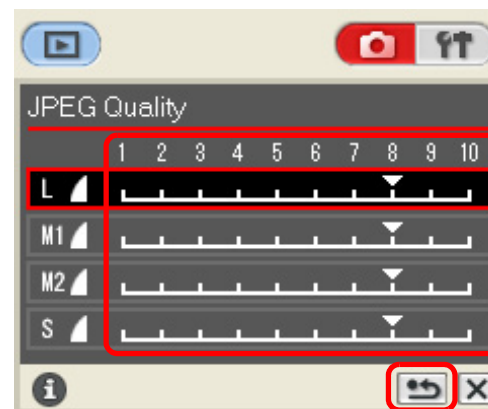
You can set the JPEG image quality and apply it to the camera, in the same way as operating from the camera.

### 1 Click [JPEG Quality].



→ The [JPEG Quality] window appears.

### 2 Click the setting position and then click the [Apply] button.



- Higher values give a lower compression ratio and higher image quality for any size.

→ The settings are applied to the camera and the display returns to the shot settings window.

Introduction

Contents at a Glance

Downloading Images

Camera Settings

Remote Shooting

4 Preferences

Reference

Index

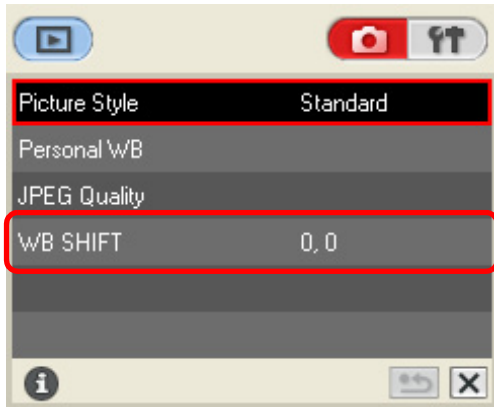


## Adjusting White Balance and Applying to the Camera



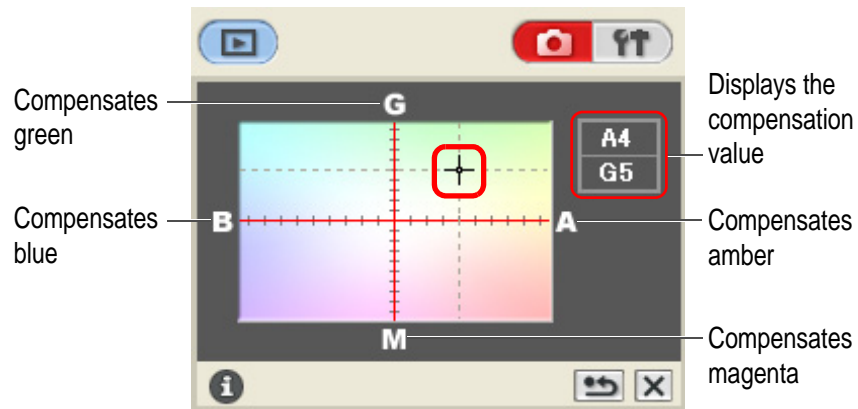
You can adjust white balance, in the same way as operating from the camera.

### 1 Click [WB SHIFT].



→ The white balance adjustment window appears.

### 2 Click the compensation position.



→ The settings are applied to the camera.

### 3 Click the [↶] button.

→ The display returns to the shot settings window.

● To revert the corrected values to the original values, follow the procedure in step 2.

Introduction

Contents at a Glance

Downloading Images

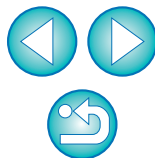
Camera Settings

Remote Shooting

4 Preferences

Reference

Index





## Setting Parameters and Applying to the Camera

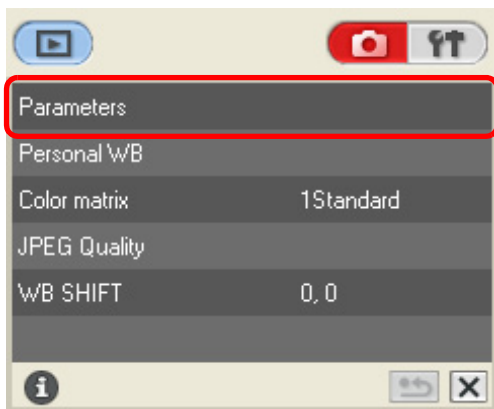


With RAW Image Task (RAW image processing software), you can adjust the tone curve of a shot RAW image, and you can save the result as a tone curve file.

In EU, this tone curve file as well as [Sharpness] and [Contrast] settings can be registered as processing parameters in the camera (up to three settings), and can be used as the processing parameters when shooting in a specific environment.

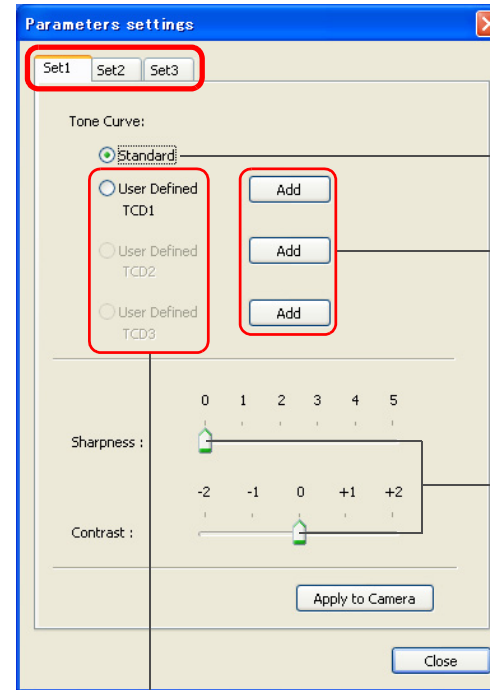
For instructions on how to save a tone curve file using RAW Image Task, refer to “Adjusting RAW Images” in the “ZoomBrowser EX Instruction Manual” (PDF electronic manual).

### 1 Click [Parameters].



→ The [Parameters settings] dialog box appears.

### 2 Select a tab to be set and specify the settings for each item.



Sets the standard tone curve

Select a tone curve file saved to your computer in the window that is displayed

Drag left or right to set \* With the 1Ds 1D, [Sharpness] and [JPEG Quality] are displayed

Sets the tone curve file saved in RAW Image Task

\* With the 1Ds 1D, [User Defined] is displayed

### 3 Click the [Apply to Camera] button.

→ The [Confirm settings] dialog box appears.

### 4 Check the settings and click the [OK] button.

→ The processing parameter is registered on the camera.

### 5 Click the [Close] button.

→ The [Parameters settings] dialog box closes and the display returns to the shot settings window.

### 6 Select the registered parameter on the camera.

• For selecting processing parameters, refer to “Setting the Processing Parameters” in the camera’s Instruction Manual provided with your camera.

Introduction

Contents at a Glance

Downloading Images

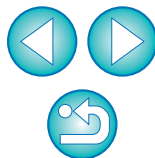
Camera Settings

Remote Shooting

Preferences

Reference

Index



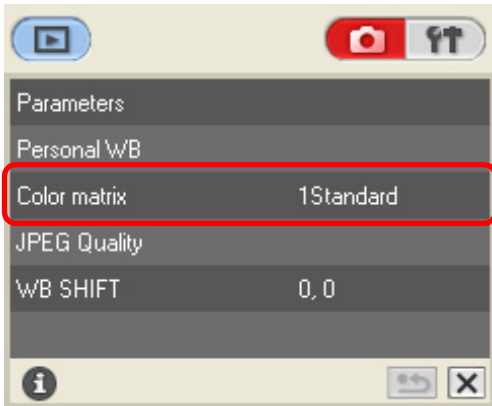
## Setting a Color Matrix and Applying to the Camera



You can select a color matrix and apply to the camera, in the same way as operating from the camera. You can also register in the camera up to two color matrices – [6CM set1] and [7CM set2] – with customized [Color space], [Saturation] and [Color tone].

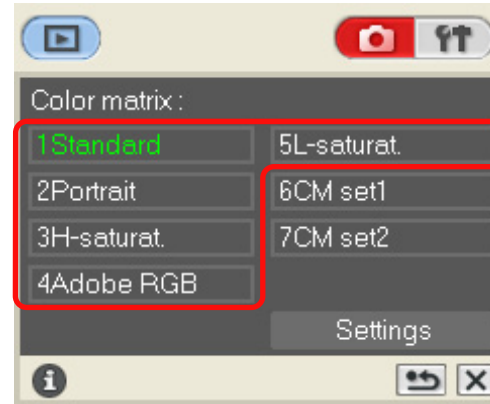
## Selecting a Color Matrix to be Applied to the Camera

1 Click [Color matrix].



→ The [Color matrix] window appears.

2 Click the color matrix to be set in the camera.



→ The settings are applied to the camera and the display returns to the shot settings window.

Introduction

Contents at a Glance

Downloading Images

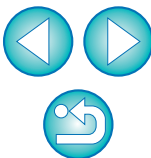
Camera Settings

Remote Shooting

4 Preferences

Reference

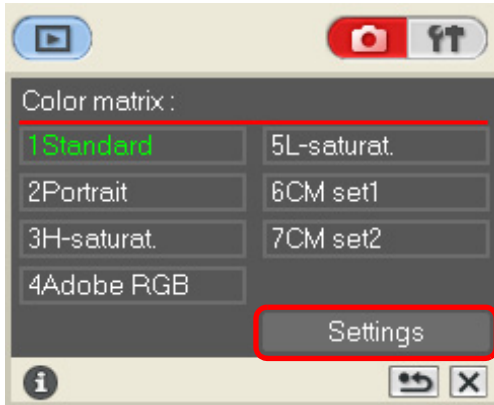
Index



## Customizing a Color Matrix and Applying to the Camera

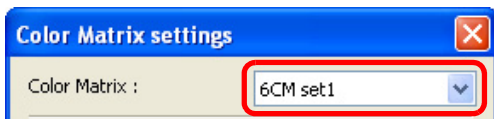
You can customize [Color tone], [Saturation] and [Color space] and register up to two in the camera as color matrices [6CM set1] and [7CM set2].

- 1 Click [Color matrix] (p.29).  
→ The [Color matrix] window appears.
- 2 Click [Settings].

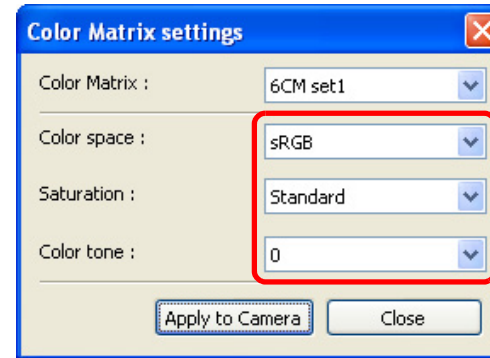


→ The [Color Matrix settings] dialog box appears.

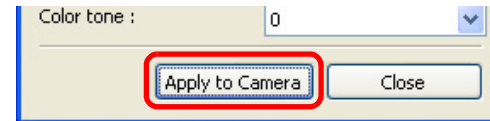
- 3 Select [6CM set1] or [7CM set2] from the [Color Matrix] list box.



- 4 Select the setting to be set from each list box.



- 5 Click the [Apply to Camera] button.



→ The [Confirm settings] dialog box appears.

- 6 Check the settings and click the [OK] button.

→ The settings are applied to the camera.

- 7 Click the [Close] button.

→ The [Color Matrix settings] dialog box closes.

- 8 In the [Color matrix] window (window in step 2), click on the set [6CM set1] or [7CM set2].

→ The settings are applied to the camera and the display returns to the shot settings window.

Introduction

Contents at a Glance

Downloading Images

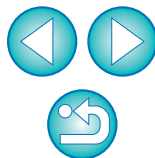
Camera Settings

Remote Shooting

Preferences

Reference

Index



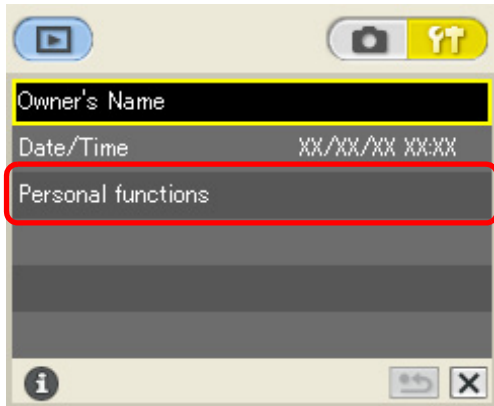
# Customizing Camera Functions (Personal Functions)



You can customize the camera to your needs by selecting detailed settings for each function. You can also save to your computer the settings according to their use, as well as load saved settings and apply them directly to the camera.

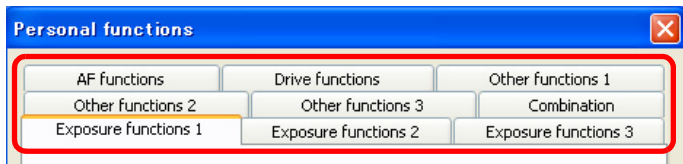
**1 Display the basic settings window (p.17).**

**2 Click [Personal functions].**



→ The [Personal functions] dialog box appears.

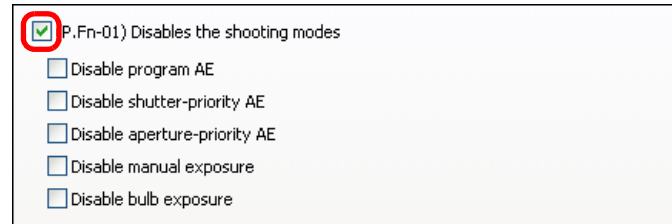
**3 Select a tab to be set.**



→ The selected dialog box appears.

- In the [Combination] tab sheet, you can check the specified Personal Function settings and whether or not the settings have been applied to the camera, as well as save and load Personal Functions (p.39, p.40).

**4 Checkmark the box  and specify the required settings (p.32 to p.38).**

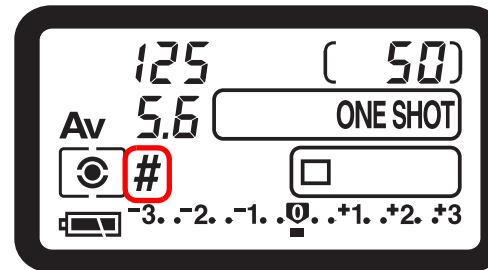


- If you enter a numerical value, values outside the valid range of settings are ignored.

**5 Check the settings and save them on your computer if necessary (p.39).**

**6 Click the [OK] button.**

→ The settings are applied to the camera, the [Personal functions] dialog box closes and the display returns to the basic settings window.



→ When a Personal Function is applied to the camera, < # > appears on the LCD panel.

Introduction

Contents at a Glance

Downloading Images

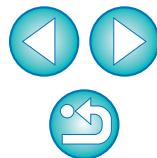
Camera Settings

Remote Shooting

Preferences

Reference

Index



## Description of Personal Functions

A description of the content of each Personal Function is given below in the order of their function numbers.

The **C.Fn** shown in this section provides a brief description of the Custom Function setting for the respective function. For more details, refer to “Custom Function Settings” in the camera’s Instruction Manual provided with your camera.


### P.Fn-01 Disables the shooting modes

- Checkmark the shooting modes you do not want to use.
- Unwanted shooting modes can be skipped while you are selecting the shooting mode.
- This makes selecting the desired shooting mode faster.
- With the **1Ds** **1D**, [Disable depth-of-field AE] is also displayed.

 At least one checkbox must be left unchecked.

### P.Fn-02 Disables the metering modes

- Checkmark the metering modes you do not want to use.
- Unwanted metering modes can be skipped while you are selecting the metering mode.
- This makes selecting the desired metering mode faster.


 At least one checkbox must be left unchecked.

### P.Fn-03 Specifies the metering mode for manual exposure

- Select the metering mode to be specified.
- You can specify the metering mode to be used in the manual exposure mode.
- When you set the manual exposure mode, the metering mode selected here will be set automatically. In the manual exposure mode, this enables you to use a metering mode different from the one used in the AE modes.

### P.Fn-04 Sets the maximum and minimum shutter speeds to be used

- Select the maximum and minimum shutter speeds from the list box. For example, if you set 1/2000 sec. as the fastest shutter speed and 1/60 sec. as the slowest, the shutter speed range will be 1/2000 to 1/60 sec.
- This makes shutter speed selection faster and prevents a slow-speed sync. in aperture-priority AE mode with the flash.

-  ● If you set the maximum and/or minimum shutter speed to one that is not a full-stop increment (such as 1/750 sec.), the controllable and settable shutter speed range might not be as exact as you set it (A slight deviation may occur.). This applies if you also set Custom Function C.Fn-6-1 and C.Fn-6-2 and set the maximum and/or minimum shutter speed to one that is not a full-stop increment (such as 1/3200 sec.).
- To ensure that a proper flash sync speed is set in the Program AE mode, a shutter speed range of 1/200 sec. to 1/80 sec. cannot be set with the **1D Mk II N** **1Ds Mk II** **1D Mk II** **1Ds**, and the range of 1/400 sec. to 1/80 sec. cannot be set with the **1D**.
- If safety shift has been enabled (with C.Fn-16), it will override P.Fn-04’s shutter speed range.

Introduction

Contents at a Glance

Downloading Images

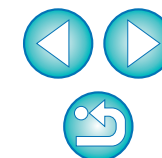
Camera Settings

Remote Shooting

Preferences

Reference

Index






## P.Fn-05 Sets the maximum and minimum apertures to be used

- Select the maximum and minimum apertures from the list box. For example, if you set 1.4 for the largest aperture (minimum f/ number) and 8.0 for the smallest aperture (maximum f/number), the usable aperture range will be f/1.4 to f/8.0.
- You can better control the apertures used by setting the range of usable apertures.

- ⚠ ● If you set the maximum and/or minimum aperture to one that is not a full-stop increment (such as f/4.5), the controllable and settable aperture range might not be as exact as you set it (A slight deviation may occur.). This applies if you also set Custom Function C.Fn-6-1 or C.Fn-6-2 and set the maximum and/or minimum aperture to one that is not a full-stop increment (such as f/6.3).
- If the largest aperture of the attached lens is smaller than the largest aperture you set with P.Fn-05, the largest aperture will be set to the lens' largest aperture. And if the largest aperture of the attached lens is smaller than the smallest aperture you set with P.Fn-05, the aperture will be set and fixed to the lens' largest aperture.
- If safety shift has been enabled (with C.Fn-16), it will override P.Fn-05's aperture range.



## P.Fn-06 Registers and switches the shooting mode and metering mode

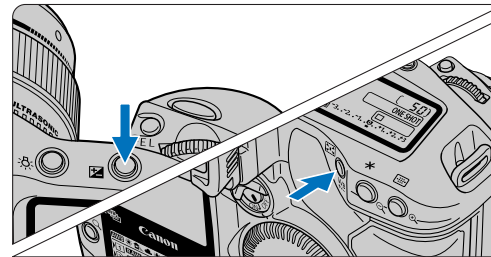
- Only while you press the <  > button, you can switch to the preset shooting mode, exposure setting (such as the aperture for aperture-priority AE), metering mode, and exposure compensation amount.
- Select settings that are appropriate for each shooting mode.
- The modes and settings are preset with the camera.
- Convenient when you want to instantly select the preset modes and settings to suit a particular shooting situation such as backlit or front-lit conditions.


## P.Fn-06 Registering the Modes and Settings with the Camera

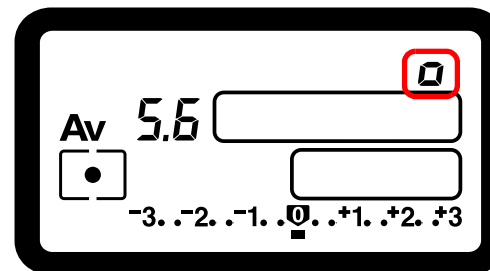
1 Set the shooting mode and shooting mode settings (for example, aperture setting for aperture-priority AE mode). Then set the metering mode and exposure compensation amount.

2 Register the modes and settings.

- Press the <  > button, then press the <  > button.



- <  > appears in the LCD panel, indicating that the modes and settings have registered.



- The registered modes and settings can be modified any number of times.

Introduction

Contents at a Glance

Downloading Images

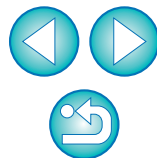
Camera Settings




Remote Shooting


Preferences


Reference

Index



- ⚠ To register the modes and settings, first press the <  > button before the <  > button. If you press the <  > button first, the camera will only select the registered modes and settings instead.
- Bulb cannot be preset.
- You cannot select the registered modes and settings during continuous shooting.

- 📖 If P.Fn-03 has been set to specify the metering mode for manual exposure, and P.Fn-06 is used to register the manual exposure mode and a metering mode different from the one specified with P.Fn-03, you can select the metering mode specified with P.Fn-03 by pressing the <  > button.
- If P.Fn-04 and/or P.Fn-05 has been set, set the shutter speed and aperture within the range specified with P.Fn-04 and/or P.Fn-05.
- If the shooting and metering modes you want to set are excluded by the restrictions in P.Fn-01 and P.Fn-02, those Personal Functions must be disabled. For information on clearing and resetting Personal Functions, refer to “Clearing and Resetting Personal Functions” in the camera’s Instruction Manual provided with the camera.
- Even if the shooting and metering modes selected by P.Fn-06 are excluded by the restrictions in P.Fn-01 and P.Fn-02, they are still valid for P.Fn-06.

- C.Fn** ● If C.Fn-4-1 or C.Fn-4-3 has been set, AF and AE will also take effect when you press the <  > button.
- When C.Fn-18 is set, P.Fn-06 is disabled.

### **P.Fn-07 Repeats bracketing during continuous shooting**

- While you hold down the shutter button, bracketing repeats continuously in the currently selected drive mode.
- This function is useful when you want to continuously repeat the bracketing sequence.

### **P.Fn-08 Sets the number of shots to be bracketed**

- Select the number of shots from the list box.
- The usual 3-shot bracketing is changed to 2-, 3-, 5-, or 7-shot bracketing.
- In bracketing shots, if you select 5-shot bracketing with 1-stop increment, the bracketing for the shots is -2, -1, 0, +1 and +2.
- This function is useful for adjusting the range of bracketing.

- 📖 ● Even when the setting is outside the bracketing level display range, the exposure is compensated as specified.
- This function can be used in combination with C.Fn-09-2/3 and P.Fn-09.

### **P.Fn-09 Changes the bracketing sequence for C.Fn-09-2/3 to increased exposure, standard exposure, and decreased exposure**

- The bracketing sequence when C.Fn-09-2/3 is selected (decreased exposure → standard exposure → increased exposure) changes to increased exposure → standard exposure → decreased exposure.
- This function is useful when you want to start the bracketing sequence with a increased exposure.

- 📖 This function can be used in combination with P.Fn-08.

Introduction

Contents at a Glance

Downloading Images

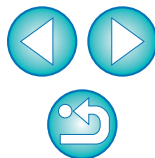
Camera Settings

Remote Shooting

Preferences

Reference

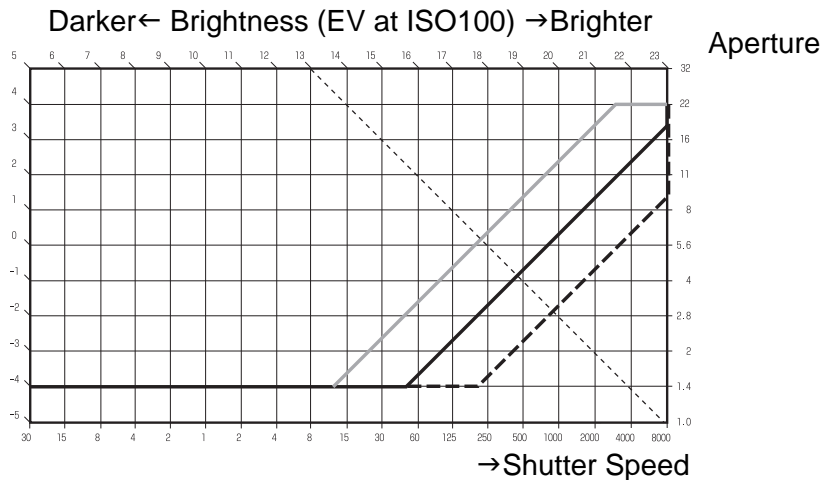
Index



## P.Fn-10 Retains the shift amount for program shift

- Normally, any program shift amount is canceled after you take the picture. This Personal Function retains the program shift amount.
- This function is useful when you want to shift the standard program line so that priority is given to the shutter speed or to the aperture.

By shifting the program, you can change the shutter speed or aperture and still retain the same exposure level. Under the same brightness, you can shift the program line toward the right to set a faster shutter speed and a larger aperture (lower f/number). Or you can shift the program line toward the left to set a slower shutter speed and a smaller aperture (higher f/number). P.Fn-10 retains the amount of program shift. Select the appropriate amount of shift for the level of priority you want to give to the shutter speed or aperture setting.



- Standard program line
  - - - Program line shifted toward a faster shutter speed.
  - Program line shifted toward a slower shutter speed.
- With EF50mm f/1.4 USM

- ! ● The program shift amount remains in effect until you set it back to the standard program manually or replace the battery or press the < CLEAR > button.
- The shift amount is retained even after you change the lens.

## P.Fn-13 Executes AI Servo AF continuous shooting giving priority to the drive speed



- During continuous shooting, shutter release-priority takes effect instead of focus-priority.
- Effective when it is more important to capture an image even though it might be slightly out of focus.

## P.Fn-14 Disables focus detection (search driving) by the lens drive

- Normally, when you press the shutter button halfway and focus cannot be achieved, the lens is driven to search the correct focus. This lens driving operation can be turned off.
- When focus has been achieved once and refocusing fails, the subsequent lens driving operation can result in grossly out of focus. This subsequent lens driving operation is turned off. P.Fn-14 is especially suited for super telephoto lenses.

- ! If autofocus is attempted while the lens is way out of focus, the lens may stop operating. Focus manually until the subject outline becomes discernable, then autofocus.

## P.Fn-15 Disables the AF-assist beam from being emitted

- This disables the external Speedlite's built-in AF-assist beam.
- At a joint photo session, etc., this prevents the AF-assist beam's pattern projected on the subject from being photographed by other photographers.

Introduction

Contents at a Glance

Downloading Images

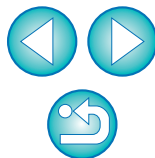
Camera Settings

Remote Shooting

Preferences

Reference


Index



## **P.Fn-16 Enables automatic shooting when focus is achieved at the fixed point of focus while the shutter button is pressed fully**



- This takes the picture automatically when the subject comes to the preset focusing distance. Focusing detection is performed using the selected AF point.
- Set the lens focus mode switch to < MF > and focus manually at the desired point of focus.
- Keep pressing the shutter button fully.
- Using an accessory such as Remote Controller RS-80N3 which can lock the shutter button relieves you from holding down the shutter button while you wait for the subject.

- ⚠ ● Because the camera remains on standby while the shutter button is fully pressed, battery power is used up more quickly. For long periods of photography, use the DC Coupler Kit provided with the camera.
- When this function is used in combination with a flash, the flash remains on standby at full charge. Consequently, the flash batteries are used up more quickly. (The Speedlite's SE mode is disabled.)
- When you use a flash with this function, set the drive mode to single shooting. If you select continuous shooting, the flash will be unable to charge in time for successive shots and will not fire at full charge.
- If you set the drive mode to continuous shooting, set the number of shots in P.Fn-20. If you do not use P.Fn-20, once the camera focuses on the subject, continuous shooting will continue until the capacity of the memory card is reached.
- P.Fn-16 cannot be used with manual focus lenses or with lenses that are too slow to be used with autofocus.
- Do not use this function when C.Fn-4-1/3 is set as shots will be taken regardless of whether the image is in focus.

 Using an accessory such as Remote Controller RS-80N3 which can lock the shutter button is recommended.

## **P.Fn-17 Disables automatic AF point selection**

- When you select beyond the peripheral AF point, the selection stops there. It makes selecting a peripheral AF point faster.



-  ● If C.Fn-11-2 has been set, you can switch to automatic AF point selection by pressing the <  > button during autofocus. For more details, refer to “Selecting the AF Point” in the camera’s Instruction Manual provided with the camera.
- If automatic AF point selection has been preset at [AF frame registration] setting, the preset setting remains valid. For more details, refer to “Registering and Switching the AF Point” in the camera’s Instruction Manual provided with the camera.

## **P.Fn-18 Enables automatic AF point selection when C.Fn-11-2 has been set**

- Enables the standard horizontal AF point selection together with automatic AF point selection with C.Fn-11-2.
- Convenient when you want to use automatic AF point selection while C.Fn-11-2 has been set.

- ⚠ ● If P.Fn-17 [Disables automatic AF point selection] has also been set, P.Fn-17 will override P.Fn-18 to disable automatic AF point selection.

## **P.Fn-19 Sets the continuous shooting speed**

- From the list box, select the speed of continuous shots.
- By reducing the maximum continuous shooting speed, AI Servo AF continuous shooting can be more stable.
- With the   , only [Continuous Shooting] is displayed.

- ⚠ ● In AI Servo AF, it may not be possible to complete the selected speed of continuous shots.

Introduction

Contents at a Glance

Downloading Images

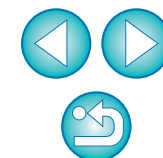
Camera Settings

Remote Shooting

4 Preferences

Reference

Index




## P.Fn-20 Limits the number of shots during continuous shooting

- This enables you to enter the maximum number of shots to be exposed during continuous shooting while the shutter button is pressed fully.
- Convenient when you do not want to shoot an unwanted scene that follows.

## P.Fn-21 Enables quiet operation when the shutter button is OFF after picture-taking

- When single shooting is selected, this function selects quiet camera operation when you release the shutter button from the fully pressed position to the half way position.
- This is useful when the camera operation noise would be disturbing after you take the picture.


 If you select continuous shooting, the camera operates normally.




**C.Fn** Setting mirror lockup with C.Fn-12 will further reduce the shooting noise.

## P.Fn-23 Changes the timer's time length

- After you press and release a button, the respective function remains active for a specific number of seconds. You can change this number of seconds as necessary.
- The function's activation time can be set from 0 to 3600 sec. (1 hour).
- If the standard activation time is too short or too long, you can adjust it.


<b>6 sec. timer</b>	<ul style="list-style-type: none"> <li>• AE lock time after you press the shutter button halfway or the &lt; * &gt; button.</li> </ul>
<b>16 sec. timer</b>	<ul style="list-style-type: none"> <li>• FE lock time after you press the &lt; FE L &gt; button.</li> </ul>
<b>Post-shutter release timer (2 sec. timer)</b>	<ul style="list-style-type: none"> <li>• Exposure setting retaining time after the picture is taken. Setting this to a longer time can make it easier to shoot in the same exposure with AE lock.</li> <li>• LCD panel illumination time after the picture is taken.</li> </ul>

 Note that if you set a longer activation time, the battery become exhausted more quickly and the number of possible shots will be reduced.

 To turn off the function's activation time midway, press the < MODE > button, < AF > button or <   > button.

## P.Fn-24 Illuminates the LCD panel during bulb exposures

- After the bulb exposure starts, press the < LCD panel illumination > button to illuminate the LCD panel until the bulb exposure ends.
- Convenient when you want to monitor the elapsed bulb exposure time.

 Note that if you take bulb shots for long periods, the battery becomes exhausted more quickly and the number of possible shots will be reduced.


## P.Fn-25 Sets the default settings when the < CLEAR > button is ON

- You can use this function to select the default settings when you press the < CLEAR > button.
- Convenient when you want to instantly switch to frequently-used settings.

## P.Fn-26 Shortened release time lag

 **1D Mk II N** **1Ds Mk II** **1D Mk II**

- Normally, the shutter-release time lag is controlled for stability. This Personal Function eliminates this control. As a result, the shutter-release time lag can be reduced by as much as about 20 percent when the aperture needs to be stopped down by no more than 3 stops.
- This is effective when a shorter shutter-release time lag is more important than a stable shutter-release time lag.

 Since the difference is in 10-millisecond increments, the time lag may not feel any shorter.

Introduction

Contents at a Glance

Downloading Images

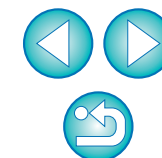
Camera Settings

Remote Shooting

Preferences

Reference


Index





### P.Fn-27 Enables the electronic dial's function to be used in the reverse direction

- The electronic dial's rotational function can be reversed for selecting the AF point and setting the shutter speed and aperture.
- By matching the dial's rotation direction to the particular operation, the operation can feel more intuitive.

 When the Main Dial's rotational function is reversed, the horizontal AF point selection direction does not change.

### P.Fn-28 Prevents exposure compensation with the Quick Control Dial

- The Quick Control Dial cannot be used to set exposure compensation.
- This prevents exposure compensation from being set accidentally while the AF point is being selected.

### P.Fn-30 Enables Quick Control Dial switch to turn on/off Main Dial, too




- Setting the Quick Control Dial switch to < OFF > disables the Main and Quick Control Dials.

### P.Fn-30 Enlargement mode





- Select which part of an image is enlarged.
- If you take the shot on the camera with this function [ON], you can enlarge an image.
- For more information on using this function on the camera, refer to "P.Fn-30 Enlarging the image" in the camera's Instruction Manual.

 If you wish to enlarge an image, set P.Fn-30 to [ON] during shooting and playback. The image shot on the camera without setting P.Fn-30 to [ON] cannot be enlarged.

### P.Fn-31 Add original decision data



- The data that shows whether or not the image is the original one can be added to the image. When selecting the display format of Shooting information (INFO), the [  ] icon showing the captured image with original image verification data is displayed. For more details, refer to "Shooting Information Display" in the camera's Instruction Manual.
- To verify whether the image is the original, you will need the one of the following EOS accessories: Original Data Security Kit OSK-E3 (sold separately), Data Verification Kit DVK-E2 (sold separately), or DVK-E1 (sold separately).

 For a JPEG or TIFF image converted from a RAW image and saved using Digital Photo Professional or ZoomBrowser EX/RAW Image Task, the original decision data is not added.

Introduction

Contents at a Glance

Downloading Images

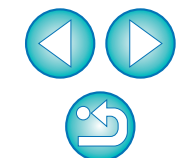
Camera Settings

Remote Shooting

4 Preferences

Reference

Index

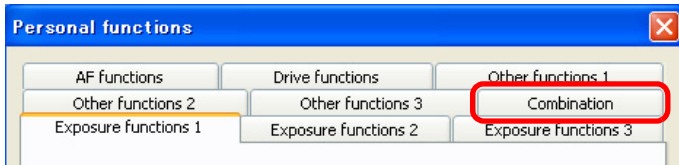


## Checking Settings and Application to Camera

You can check the content of the specified Personal Functions and whether they have been applied to the camera.

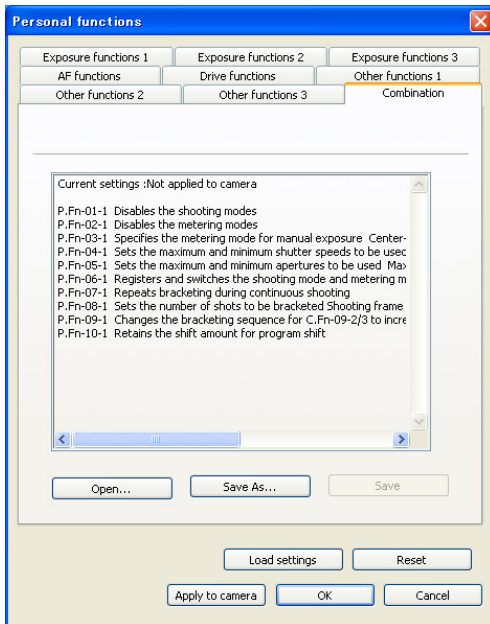
1 Specify the Personal Functions (p.32 to p.38).

2 Select the [Combination] tab.



→ The [Combination] tab sheet appears.

3 Check the settings.



## Saving and Loading Settings

You can save specified Personal Functions to your computer as a Personal Function settings file, as well as load and apply them to the camera.

If you save in advance multiple Personal Function settings files according to use, you can immediately apply a setting to the camera for the required use.

### Saving Settings to Your Computer

1 Click the [Save As] button.

→ The [Save As] dialog box appears.

2 Select a save destination, enter a file name and click the [Save] button.

→ The content of the specified Personal Function is saved to your computer as a Personal Function settings file.

⚠ The Personal Function settings file is not compatible with a camera other than the one the function was set on.

- If you have loaded or changed a Personal Function settings file which you have saved to your computer, click the [Save] button and update the loaded file.
- A Personal Function settings file saved to your computer is compatible with both Windows and Macintosh.

Introduction

Contents at a Glance

Downloading Images

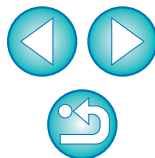
Camera Settings

Remote Shooting

4 Preferences

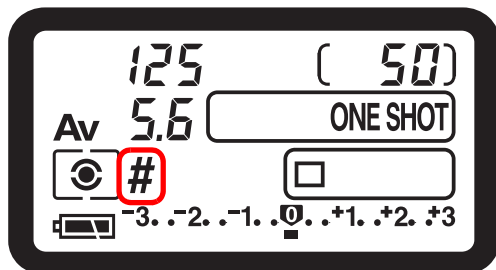
Reference

Index



## Loading Settings and Applying to the Camera

- 1 Click the [Open] button.**
  - The [Open] dialog box appears.
- 2 Open the folder where the settings are saved, select a file and click the [Open] button.**
  - The saved Personal Function settings file is loaded.
- 3 Click the [OK] button.**
  - The loaded settings are applied to the camera, the [Personal functions] dialog box closes, and the display returns to the basic settings window.
  - When a Personal Function is applied to the camera, < # > appears on the LCD panel.



Introduction

Contents at a Glance

Downloading Images

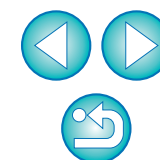
Camera Settings

Remote Shooting

Preferences

Reference

Index



# 3 Remote Shooting by Controlling the Camera from Your Computer



You can change the camera settings and shoot photos by remotely controlling the camera from EU. You can also shoot by directly operating your camera even during remote shooting, or preset a time allowing the camera to shoot automatically with timer shooting.

---

Remote Shooting by Controlling the Camera from Your Computer .....	42
Displays and Settings by Camera Model.....	43
Shooting by Operating the Camera .....	44
Timer-controlled Shooting .....	44
Interval Timer Shooting .....	44
Timer Shooting .....	44

Introduction

Contents at a Glance

Downloading Images

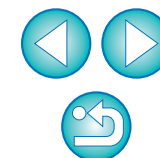
Camera Settings

Remote Shooting

Preferences

Reference

Index

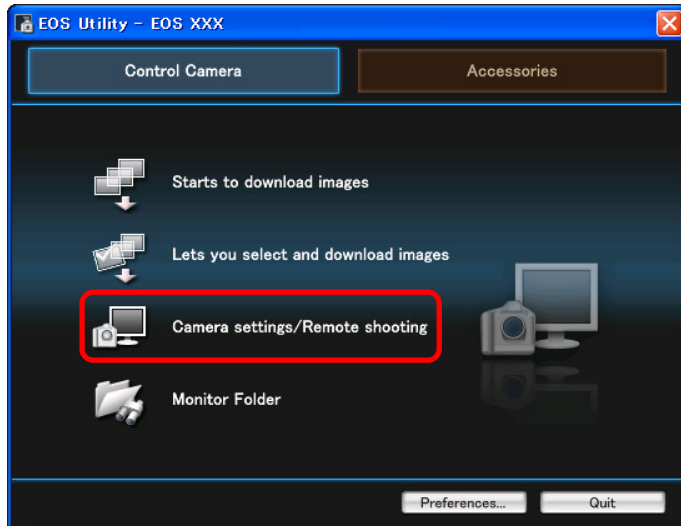


# Remote Shooting by Controlling the Camera from Your Computer

You can remote control your camera and shoot from your computer. Shot images are saved to your computer, and you can check them immediately in the Digital Photo Professional (hereinafter DPP), which is linked to start up automatically.

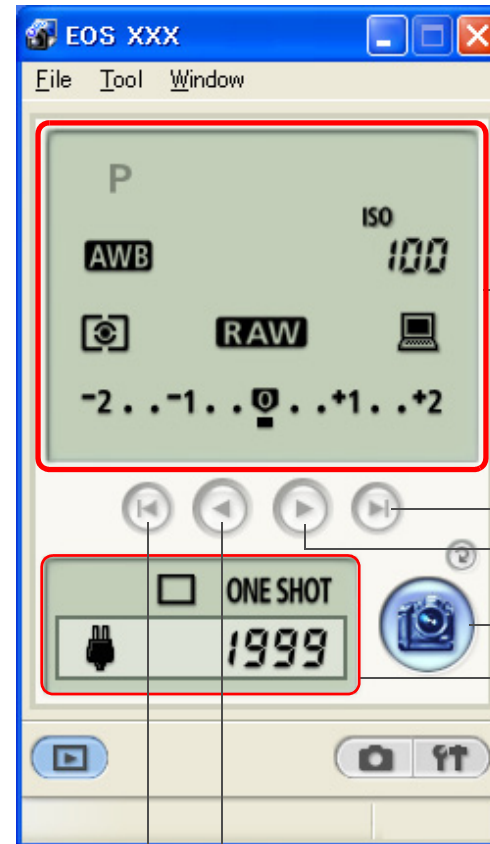
This is an effective function when shooting in large quantities using fixed framing such as for studio shooting.

## 1 Click [Camera settings/Remote shooting].



→ The camera settings/remote shooting window appears.

## 2 Set the camera.



Select the icon for the desired setting (p.58)

Sets the maximum value  
Sets one larger value

Shoot button

Displays the camera's settings (p.58)

Set one smaller value  
Sets minimum value

- Click the icons for the desired settings, and click any of the buttons [◀], [⏪], [▶] or [⏩] to set.
- You can also use the functions of the shot settings window (p.19).
- For functions that cannot be set from the camera settings/remote shooting window (Drive mode, AF mode, etc.), set these from the camera.
- Items displayed in the camera settings/remote shooting window and items that can be settable differ depending on the connected camera. For more details, refer to the "Displays and Settings by Camera Model" (p.43).

Introduction

Contents at a Glance

Downloading Images

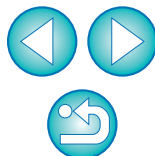
Camera Settings

Remote Shooting

Preferences

Reference

Index





### 3 Click the [ ] button and take a shot.


- The shot images are transferred to the computer, DPP starts up automatically, and the shot images are displayed.
- To switch to the main window, select the [Window] menu ► [Main Window].
- To exit EU, select the [File] menu ► [Exit].

- If the camera is not ready for shooting (the lens is not attached, etc.), you cannot perform the operation as explained.
- If you are using auto focus, you cannot take shots if the camera cannot focus. In this case, focus manually.
- Bulb exposure is not available.

- You can also press the space bar key to take a shot.
- You can change the software which displays remotely shot images from DPP to ZoomBrowser EX or other software (p.48).
- You can save shot images on both your computer and the memory card (p.48).
- For a list of camera settings/remote shooting functions, refer to p.58.




## Displays and Settings by Camera Model

Display/ Setting	1D Mk II N		1Ds Mk II		5D		30D		1D		D60	
	1D Mk II	1Ds	REBELXTi	400D	REBELXT	350D	REBEL	300D	D30			
	Display	Setting	Display	Setting	Display	Setting	Display	Setting	Display	Setting	Display	Setting
Shooting mode	<input type="radio"/>	<input type="radio"/>	<input type="radio"/>	–	<input type="radio"/>	–			<input type="radio"/>	–		
Shutter speed	<input type="radio"/>	<input type="radio"/>	<input type="radio"/>	<input type="radio"/>	<input type="radio"/>	<input type="radio"/>			<input type="radio"/>	<input type="radio"/>		–
Aperture	<input type="radio"/>	<input type="radio"/>	<input type="radio"/>	<input type="radio"/>	<input type="radio"/>	<input type="radio"/>			<input type="radio"/>	<input type="radio"/>		–
White balance	<input type="radio"/>	<input type="radio"/>	<input type="radio"/>	<input type="radio"/>	<input type="radio"/>	<input type="radio"/>			<input type="radio"/>	<input type="radio"/>		–
ISO speed	<input type="radio"/>	<input type="radio"/>	<input type="radio"/>	<input type="radio"/>	<input type="radio"/>	<input type="radio"/>	<input type="radio"/>	<input type="radio"/>	<input type="radio"/>	<input type="radio"/>		–
Metering mode	<input type="radio"/>	<input type="radio"/>	<input type="radio"/>	<input type="radio"/>	<input type="radio"/>	<input type="radio"/>	<input type="radio"/>	<input type="radio"/>	<input type="radio"/>	<input type="radio"/>		–
Image recording quality	<input type="radio"/>	<input type="radio"/>	<input type="radio"/>	<input type="radio"/>	<input type="radio"/>	<input type="radio"/>	<input type="radio"/>	<input type="radio"/>	<input type="radio"/>	<input type="radio"/>		–
Save destination of shot images	<input type="radio"/>	<input type="radio"/>	<input type="radio"/>	<input type="radio"/>	<input type="radio"/>	<input type="radio"/>	<input type="radio"/>	<input type="radio"/>	<input type="radio"/>	<input type="radio"/>	<input type="radio"/>	<input type="radio"/>
Exposure compensation	<input type="radio"/>	<input type="radio"/>	<input type="radio"/>	<input type="radio"/>	<input type="radio"/>	<input type="radio"/>	<input type="radio"/>	<input type="radio"/>	<input type="radio"/>	<input type="radio"/>		–
		<b>Display</b>		<b>Display</b>		<b>Display</b>		<b>Display</b>		<b>Display</b>		<b>Display</b>
Bracket shots		<input type="radio"/>	<input type="radio"/>	<input type="radio"/>	<input type="radio"/>	<input type="radio"/>	<input type="radio"/>	<input type="radio"/>	<input type="radio"/>	<input type="radio"/>		–
Drive mode		<input type="radio"/>		<input type="radio"/>		<input type="radio"/>		<input type="radio"/>		<input type="radio"/>		<input type="radio"/>
AF mode		<input type="radio"/>		<input type="radio"/>		<input type="radio"/>		<input type="radio"/>		<input type="radio"/>		<input type="radio"/>
Battery status		<input type="radio"/>		<input type="radio"/>		<input type="radio"/>		<input type="radio"/>		<input type="radio"/>		<input type="radio"/>
Warning display		<input type="radio"/>		<input type="radio"/>		<input type="radio"/>		<input type="radio"/>		<input type="radio"/>		<input type="radio"/>
Shots to Go		<input type="radio"/>		<input type="radio"/>		<input type="radio"/>		<input type="radio"/>		<input type="radio"/>		<input type="radio"/>

\*1: Cannot be set with the .

\*2: Cannot be set with the   .

\*3: Does not display with the .

\*4: Does not display with the   .

Introduction

Contents at a Glance

Downloading Images

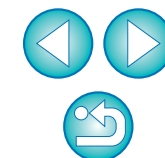
Camera Settings

Remote Shooting

Preferences

Reference

Index



# Shooting by Operating the Camera

Even when remote shooting is set, you can still operate the camera and shoot – as when shooting with only the camera. Also, since the shot images are saved to your computer's hard disk, you can shoot large quantities without having to worry about the capacity of the memory card.

You can check the shot images immediately in Digital Photo Professional (hereinafter DPP), which is linked to start up automatically.

- 1 Display the camera settings/remote shooting window (p.42).**
- 2 Set the camera.**
  - Specify the necessary settings for shooting by operating the camera.
  - The display of EU's camera settings/remote shooting window changes according to the settings.
- 3 Press the camera's shutter button and take a shot.**
  - The shot images are transferred to the computer, DPP starts up automatically, and the shot images are displayed.


# Timer-controlled Shooting

Two types of timer shooting are available where the camera automatically takes shots at a specified time or a specified number.

## Interval Timer Shooting

You can automatically take shots by setting the interval between shots and the number of shots to be taken.

- 1 Select the [Tool] menu ► [Timer shooting].**
  - The [Timer shooting settings] dialog box appears.
- 2 Checkmark [Interval timer shooting].**
- 3 Enter the shooting interval and the number of shots.**
  - Enter a value between 5 seconds and 99 minutes and 59 seconds in one-second increments.
  - The minimum number of interval-timed shots is two. The number of shots you can take at timed intervals depends on the available space on your computer's hard disk.
- 4 Click the [Start] button.**
  - The shots are taken at the specified intervals and for the specified number of shots.

 On some types of computer, if you set a short interval between shots and there is insufficient time to transfer and save the images, it may not be possible to take shots at the specified interval. In this case, set a longer interval between shots and take the shots again.

## Timer Shooting

You can automatically take a shot when the specified time elapses.

- 1 Select the [Tool] menu ► [Timer shooting].**
  - The [Timer shooting settings] dialog box appears.
- 2 Enter a delay time and click the [Start] button.**
  - Enter a value between 0 seconds and 99 minutes and 59 seconds in one-second increments.
  - The shot is taken when the specified time elapses.

Introduction

Contents at a Glance

Downloading Images

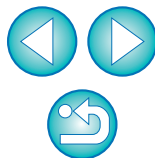
Camera Settings

Remote Shooting

Preferences

Reference

Index



# 4 Preferences



You can change each of the EU functions in the preferences window to make them easier to use.

---

Preferences .....	46
Basic Settings.....	46
Destination Folder .....	47
File Names .....	47
Download Images.....	48
Remote Shooting.....	48
Linked Software.....	48

Introduction

Contents at a Glance

Downloading Images

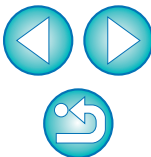
Camera Settings

Remote Shooting

**4**  
Preferences


Reference

Index



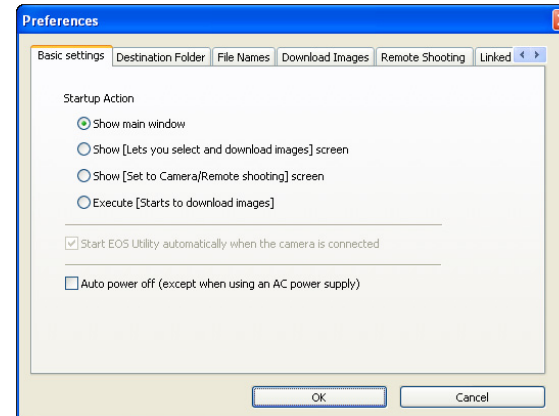
# Preferences

- 1 Connect the camera and your computer.
- 2 On the main window, click the [Preferences] button, or in another window, select the [File] menu ► [Preferences].
  - The [Preferences] dialog box appears.
- 3 Specify the required settings and click the [OK] button.
  - The settings are applied to EU.

 Specify [Preferences] when your camera and computer are connected. Settings will not be applied if they are specified when they are not connected.

## Basic Settings

You can specify the operation when EU starts up and whether the Auto power off function is enabled or disabled.



- When [Show [Lets you select and download images] screen] is set for [Startup Action], the viewer window (p.13) appears.
- When [Show [Set to Camera/Remote shooting] screen] is set for [Startup Action], the camera settings/remote shooting window (p.17) appears.
- When [Execute [Starts to download images]] is set for [Startup Action], the [Save File] dialog box (p.12) appears, and downloading to your computer begins. When all images have been downloaded, DPP starts up automatically, and the downloaded images are displayed in DPP's main window.
- If you checkmark [Auto power off], the camera's Auto power off function is enabled. If you do not checkmark it, the Auto power off function remains disabled, even if you set the Auto power off function on the camera.

Introduction

Contents at a Glance

Downloading Images

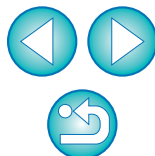
Camera Settings

Remote Shooting

Preferences

Reference

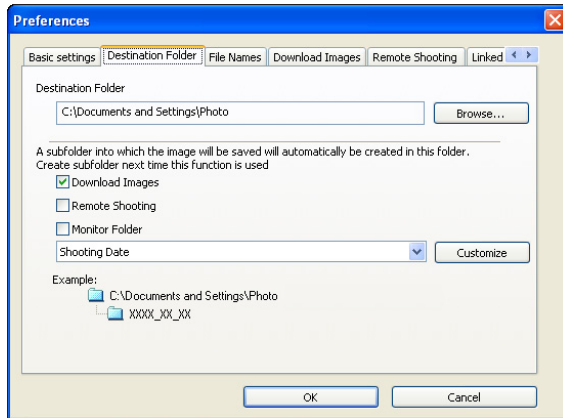
Index





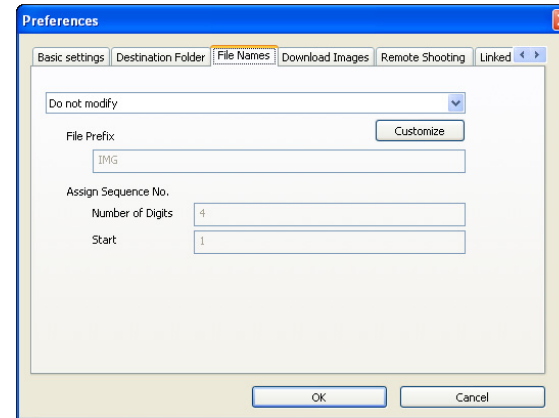
## Destination Folder

You can specify the save destination folder of images downloaded from your camera or of images shot remotely.



## File Names

You can specify the file name of images downloaded from your camera or of images shot remotely.



- To specify a save destination folder, click the [Browse] button. After you click the [Browse] button and specify a save destination folder, a subfolder is created automatically below the save destination folder you specified.
- After you checkmark any of [Download Images], [Remote Shooting], or [Monitor Folder], a subfolder is generated when the checkmarked function is used.
- You can select the naming rule for a generated subfolder from the list box.
- You can customize the naming rule for subfolders by clicking the [Customize] button.



- When specifying an image's file name, select a naming rule for the file from the list box. If [Do not modify] is selected, downloaded images are saved without the file name being changed from the one set in the camera.
- You can customize the naming rule for files by clicking the [Customize] button.
- You can set prefix characters, number of digits for serial numbers, and the start number individually for file names.

Introduction

Contents at a Glance

Downloading Images

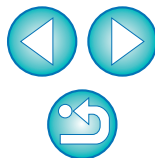
Camera Settings

Remote Shooting

Preferences

Reference

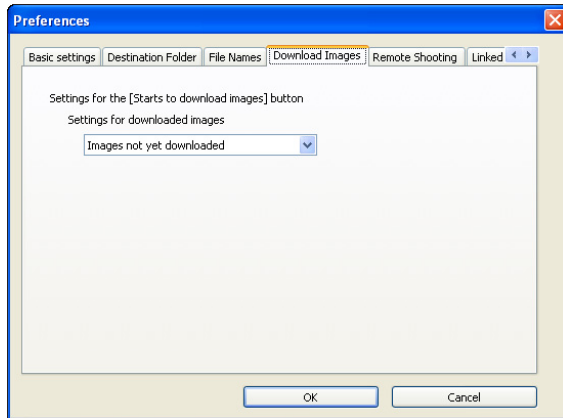
Index





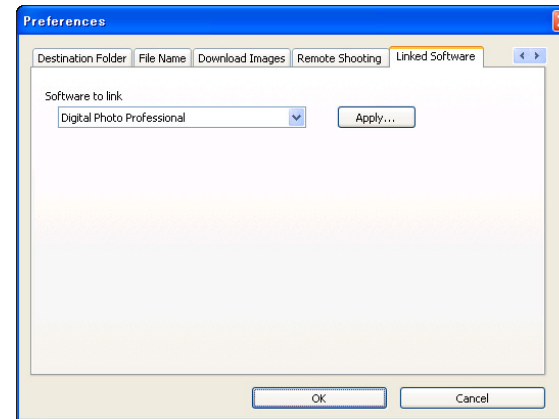
## Download Images

You can set the images from the list box that are downloaded when [Starts to download images] in the main window is clicked.



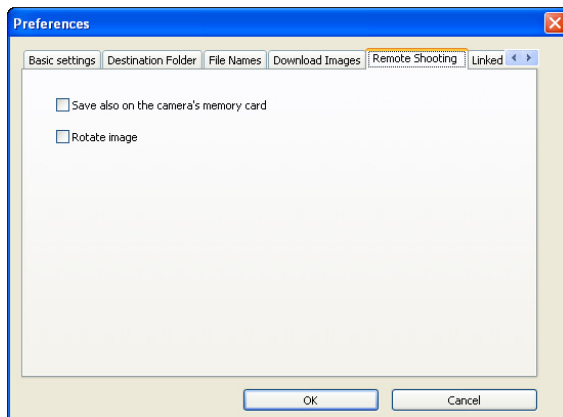
## Linked Software

You can select the linked software that starts up when images are downloaded from the camera or when images are shot remotely. Also, you can register third-party software as linked software by clicking the [Apply] button.



## Remote Shooting

You can also save remotely shot images to the memory card inside the camera, and regardless of the camera's position at the time the shot is taken, activate the function that rotates the shot image. Set the rotation angle in the camera settings/remote shooting window (p.58).



- When you have selected ZoomBrowser EX, you can specify the operation for after images are downloaded.
- In the window displayed when you click the [Apply] button, you can specify the type of images to be downloaded when linked third-party software is started up.

Introduction

Contents at a Glance

Downloading Images

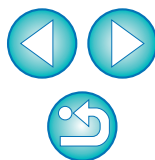
Camera Settings

Remote Shooting

Preferences

Reference

Index





This reference section has been provided to enhance your experience using EU.

It contains various troubleshooting solutions, how to delete EU from your computer and explanations of the various windows.

An index is provided at the end of the chapter for you to easily find information you are looking for.

---

Troubleshooting .....	50
Monitor Folder Function (Function for Use with the WFT-E1/E1A) .....	52
Function for Use with the Accessories .....	53
Folder Structure and File Names in the Memory Card ...	54
Uninstalling the Software .....	55
Deleting the Driver .....	55
List of Main Window Functions .....	56
List of Viewer Window Functions .....	57
List of Camera Settings/Remote Shooting Window Functions .....	58
Index .....	59
About This Instruction Manual .....	60
Trademark Acknowledgments .....	60

Introduction

Contents at a Glance

Downloading Images

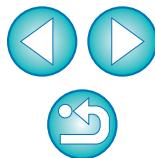
Camera Settings

Remote Shooting

Preferences

Reference

Index



# Troubleshooting

If EU is not operating correctly, refer to the items below.

## Installation could not be completed correctly

- You cannot install the software if a user setting other than [Computer administrator] privilege or [Administrator] privilege is selected. Select the [Computer administrator] privilege user setting in Windows XP or the [Administrator] privilege user setting in Windows 2000. For detailed information on selecting the user setting, refer to your computer User's Manual.

## I connected the camera to the computer before installing the software

- If you have connected the camera and your computer with the interface cable but did not set the camera's power switch to < ON >, proceed as follows:
  - 1 Disconnect the interface cable from the camera and computer.
  - 2 Install the software on your computer.
  - 3 Connect the camera and your computer.
- If you have connected the camera and your computer with the interface cable and have set the camera's power switch to < ON >, proceed as follows:
  - 1 If [Found New Hardware Wizard] or any other dialog box appears, click the [Cancel] button and cancel all the dialog boxes.
  - 2 Set the camera's power switch to < OFF >.
  - 3 Disconnect the interface cable from the camera and the computer.
  - 4 Install the software on your computer.
  - 5 Connect the camera and your computer.

## EU does not start up

- If EU does not start up even when you have set the camera's power switch to < ON >, either double-click the [EOS Utility] icon on the desktop or click the [Start] button, select [All Programs] ([Programs] in Windows 2000) ► [Canon Utilities] ► [EOS Utility] ► [EOS Utility] to start up EU.

## EU and the camera are not communicating

- EU does not operate correctly on a computer if its system requirements does not meet. Use EU on a computer with compatible system requirements (p.2).
- Push the plug of the interface cable all the way into the socket. Loose connections can cause faults and malfunctions (p.5 to p.9).
- Check that the camera's power switch is < ON > (p.10, p.11).
- EU and the camera may not communicate normally with a cable other than the EOS DIGITAL camera-dedicated Canon interface cable (p.5 to p.9).
- Connect your camera and computer directly with the interface cable provided with your camera. Do not connect the camera via a hub; doing so may prevent EU and your camera from communicating normally.
- If you connect multiple USB devices (not including the mouse or keyboard) or IEEE1394 devices to your computer, the camera may not communicate normally. If the camera cannot communicate normally, disconnect USB devices other than the mouse or keyboard or IEEE1394 devices from your computer.
- Do not connect more than one camera to the same computer. Two or more cameras may not operate normally.

Introduction

Contents at a Glance

Downloading Images

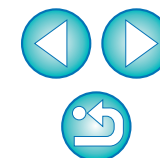
Camera Settings

Remote Shooting

Preferences

Reference

Index



- If there is insufficient charge left in the camera battery, the camera cannot communicate with EU. Either replace with a fully charged battery or use the DC coupler kit provided with the 1D series, **D60** **D30** or an AC adaptor kit (sold separately) for other camera models. Your computer does not supply power to the camera through the interface cable.

- For camera models other than the **30D** **REBELXTi** **400D**, turn off the LCD monitor. You cannot communicate with the camera when you are displaying images through the camera's LCD monitor. Always connect the camera and your computer after turning off the display in the LCD monitor.

## Communication between EU and the camera disconnected

- Operation of the Auto power off function will automatically switch the camera off, disabling communication with EU, if you turn the Auto power off function to [ON]. Remove the checkmark from [Auto power off] in the [Basic settings] tab sheet of the preferences or set the Auto power off function in the camera to [OFF].
- If you do not perform any operation while the camera and computer are connected, depending on the computer system, a confirmation message may appear on the screen asking whether you wish to continue communicating with the camera. If you do not perform any operation after this message appears, communication with the camera is terminated. To re-establish communication, press the shutter button down halfway or set the camera's power switch to < OFF > and then back to < ON >.
- Do not put your computer to sleep while it is connected to the camera. If your computer goes into sleep mode, never disconnect the interface cable while your computer is still in sleep mode. Always wake your computer up while it is still connected to the camera. Depending on the type of computer, disconnecting the interface cable while your computer is in sleep mode could prevent the computer from waking up correctly. Refer to the computer User's Manual for more information on sleep mode.

## Remotely shot images using EU do not display in DPP

- In Digital Photo Professional, select the [Tools] menu ► [Sync folder with EOS Utility].

Introduction

Contents at a Glance

Downloading Images

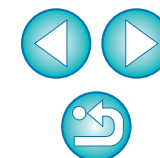
Camera Settings

Remote Shooting

Preferences

Reference

Index



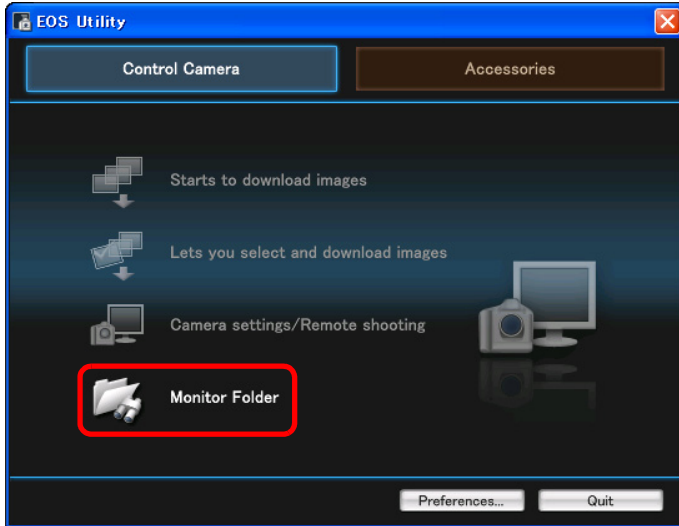


# Monitor Folder Function (Function for Use with the WFT-E1/E1A)

This is a function for checking your images with Digital Photo Professional (hereinafter DPP) in real time using the Wireless File Transmitter WFT-E1/E1A (sold separately).

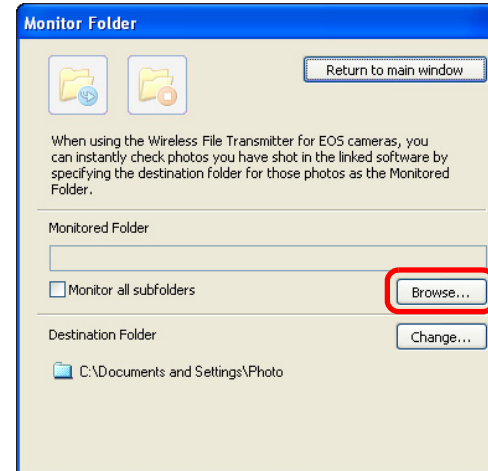
For setting the WFT-E1/E1A, refer to the Instruction Manual provided with the WFT-E1/E1A.

## 1 Click [Monitor Folder].



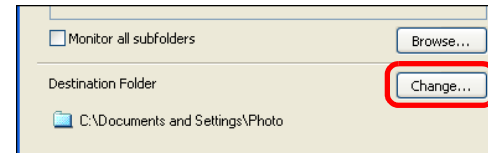
→ The [Monitor Folder] dialog box appears.

## 2 Click the [Browse] button and specify the save destination folder for shot images.



• The save destination folder for the shot images set in the WFT-E1/E1A is specified.

## 3 Click the [Change] button and specify the transfer destination folder.



## 4 Click the [ ] button.

→ Image transfer preparation is complete.

## 5 Take a shot.

→ If images are saved in the folder specified in step 2, they are transferred/saved in the folder specified in step 3.

→ DPP starts up and the images saved in the folder specified in step 3 are displayed.

! You cannot specify the same folders in step 2 and step 3.

📄 You can change the software that starts up in step 5, from DPP to ZoomBrowser EX or other software (p.48).

Introduction

Contents at a Glance

Downloading Images

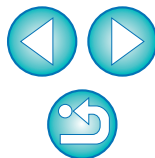
Camera Settings

Remote Shooting

4 Preferences

Reference

Index





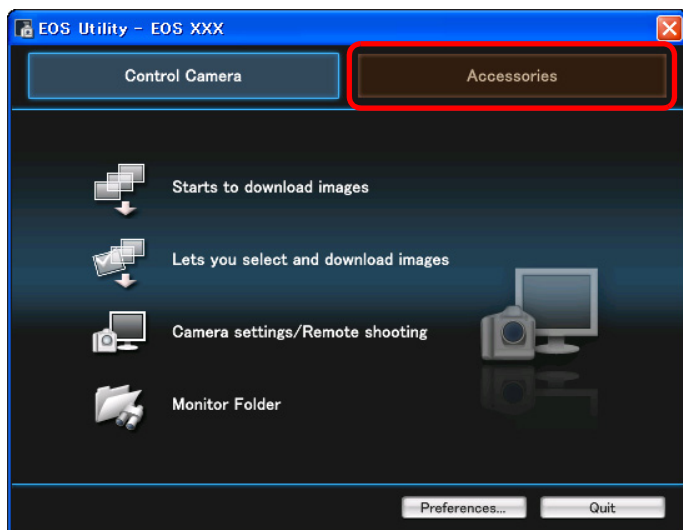
# Function for Use with the Accessories

If you have the Wireless File Transmitter WFT-E1/E1A (sold separately) or the Original Data Security Kit OSK-E3 (sold separately), you can start up the previously mentioned accessory software from EU. And you can also start up the Picture Style Editor (Picture Style file creating software).

For details on using the software for each accessory, refer to the instruction manual for the software. For Picture Style files, refer to [p.24](#).

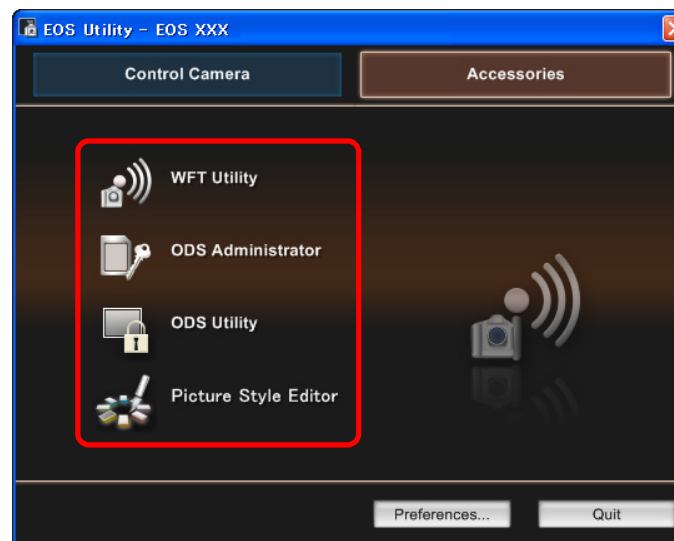
**1** Connect your camera and computer, and then start up EU ([p.5](#), [p.9](#)).

**2** Click the [Accessories] tab.



→ The [Accessories] tab sheet appears.

**3** Click the software you want to start up.



→ The clicked software starts up.

Introduction

Contents at a Glance

Downloading Images

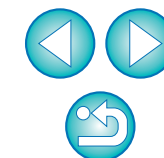
Camera Settings

Remote Shooting

Preferences

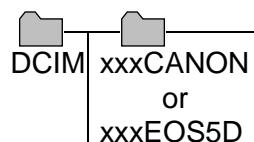
Reference

Index



# Folder Structure and File Names in the Memory Card

Images shot with the camera are saved in the memory card's [DCIM] folder with the following folder structure and file names. Refer to the following when copying images to your computer using a card reader.



## Cameras other than the 1D series

File name	Image type/Camera used
IMG_YYYY.JPG	JPEG image
IMG_YYYY.CR2	RAW image 5D 30D 20D REBELXTi 400D REBELXT 350D
IMG_YYYY.CRW	RAW image 10D REBEL 300D D60 D30
CRW_YYYY.THM	Camera index display image

- The "YYYY" in the file names represents a number between 0001 and 9999.

## 1D series cameras



File name	Image type/Camera used
****YYYY.JPG	JPEG image
****YYYY.CR2	RAW image 1D Mk II N 1Ds Mk II 1D Mk II
****YYYY.TIF	1Ds 1D
****YYYY.WAV	Audio file

- The camera specific character string set at the time of factory shipment appears in "\*\*\*\*" of the file name.
- The camera specific character string set at the time of factory shipment or set in the camera appears in "\*\*\*\*" of the images shot with the 1D Mk II N.
- The "YYYY" in the file names represents a number between 0001 and 9999.

CANONMSC Contains a file allowing the camera to manage the images in the [DCIM] folder.

- The "xxx" in the folder names represents a number between 100 and 999.
- The folder structure for the 1D Mk II N 1Ds Mk II 1D Mk II CF card and the SD card is the same.
- When you perform DPOF settings on the camera, a [MISC] folder is created. The files that manage the DPOF settings are saved in the [MISC] folder.

When Adobe RGB is specified, the file names of images shot with the 1D Mk II N 1Ds Mk II 1D Mk II 5D 30D 20D REBELXT 350D have an underscore "\_" as the first character.

Introduction

Contents at a Glance

Downloading Images

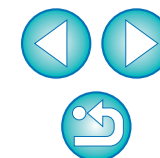
Camera Settings

Remote Shooting

Preferences

Reference

Index



# Uninstalling the Software

- Before starting the software uninstallation, exit all programs you are using.
- Log in under the Computer administrator/Administrator privileges when uninstalling the software.
- To prevent computer malfunctions, always restart your computer after you have uninstalled the software. Also, reinstalling the software without first restarting your computer is likely to result in computer malfunctions.

**1** Click the [Start] button, select [All Programs] ([Programs] in Windows 2000) ► [Canon Utilities] ► [EOS Utility] ► [EOS Utility Uninstall].

**2** Proceed with the uninstallation as directed by the on-screen messages.

→ The software is uninstalled.

## Deleting the Driver

This section explains how to delete the driver for the **1D Mk II N** **1Ds Mk II** **5D** **30D** **20D** **REBELXTi** **400D** **REBELXT** **350D** .

If you are using the **30D** or **REBELXTi** **400D** in Windows XP, it is not necessary to delete the driver as explained on this page because the OS driver is used.

For deleting the driver for the **10D** **REBEL** **300D** **D60** or **D30** , refer to the Software Instruction Manual provided with the camera.

- Log in under the Computer administrator/Administrator privileges when deleting the driver.
- Before starting the driver deletion, exit all programs you are using and disconnect the dedicated cable from your computer.

**1** Delete [EOS XXX WIA Driver] or [EOS XXX TWAIN Driver].

- Your camera model is displayed in EOS XXX.
- For Windows XP, click the [Start] button ► select [All Programs] ► [Canon Utilities] ► [EOS XXX WIA Driver] ► [WIA Driver Uninstall].
- For Windows 2000, click the [Start] button ► select [Programs] ► [Canon Utilities] ► [EOS XXX TWAIN Driver] ► [TWAIN Driver Uninstall].

**2** Proceed with the deletion as directed by the on-screen messages.

→ The driver is deleted.

**3** Restart the computer.

- When the restart dialog box is displayed on your computer, select [Yes, I want to restart my computer now] and click the [Finish] button.
- When the computer is restarted, deletion of the driver is completed.

Introduction

Contents at a Glance

Downloading Images

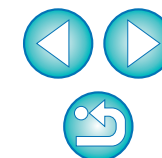
Camera Settings

Remote Shooting

Preferences

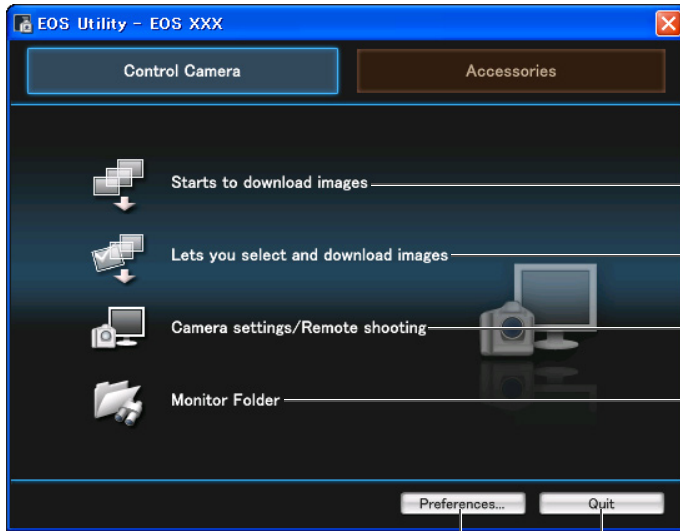
Reference

Index



# List of Main Window Functions

## Control camera tab sheet



(p.12)

(p.13, p.57)

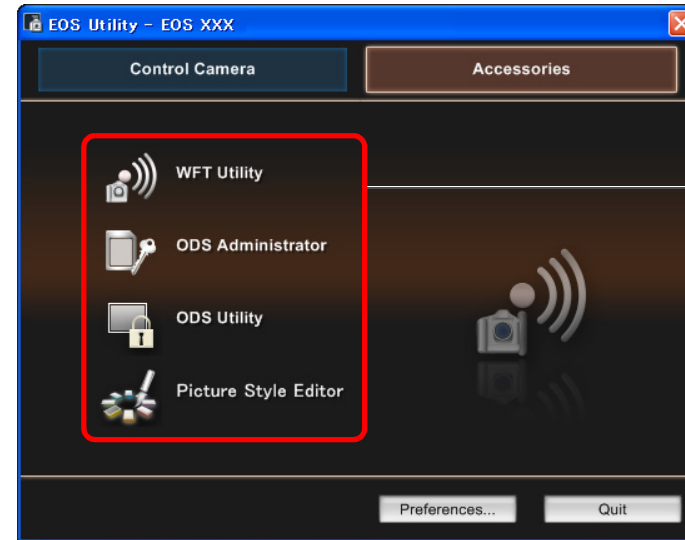
(p.42, p.58)

(p.52)

(p.46)

Exits EU (p.15)

## Accessories tab sheet



(p.53)

Introduction

Contents at a Glance

Downloading Images

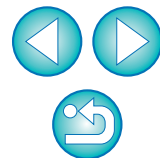
Camera Settings

Remote Shooting

Preferences

Reference

Index



# List of Viewer Window Functions

The screenshot shows the EOS Utility software interface with the following labeled functions:

- Downloads the images to the computer**: Points to the 'Download Images' button in the top toolbar.
- Selects the folder of the image displayed in the window**: Points to the folder selection dropdown menu.
- Selects the condition of the image displayed**: Points to the 'All' and 'Medium' image condition dropdown menus.
- Image display size**: Points to the image size selection dropdown menu.
- Shows/hides the image frame**: Points to the frame toggle icon.
- Shows/hides the image information display area**: Points to the information display area toggle icon.
- Starts up the linked software**: Points to the software launch icon.
- Deletes the image**: Points to the delete icon.
- Switches between the camera settings/remote shooting window**: Points to the camera settings/remote shooting toggle icon.
- [Bright.] (Brightness) histogram display**: Points to the 'Bright.' tab in the histogram panel.
- [RGB] histogram display**: Points to the 'RGB' tab in the histogram panel.
- Histogram (brightness distribution) display**: Points to the histogram graph.
- Basic image information display**: Points to the summary information section (e.g., IMG\_0005.CR2, 75.0 mm, 640 F7.1).
- Image information display area**: Points to the entire information panel.
- Detailed shooting information display**: Points to the 'Detailed Image Information' section (e.g., File Name, Camera Model, Shooting Date/Time).
- Images already transferred to computer icon**: Points to the downward arrow icon on the first row of thumbnails.
- RAW image icon**: Points to the 'RAW' icon on the second row of thumbnails.
- RAW + JPEG image icon**: Points to the 'RAW JPEG' icon on the third row of thumbnails.
- Protect icon**: Points to the lock icon on the bottom right thumbnail.
- Bracketing icon**: Points to the bracketing icon on the bottom left of the thumbnail grid.
- Audio recording icon**: Points to the audio recording icon on the bottom right of the thumbnail grid.

Introduction

Contents at a Glance

Downloading Images

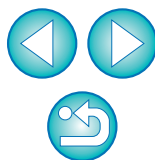
Camera Settings

Remote Shooting

Preferences

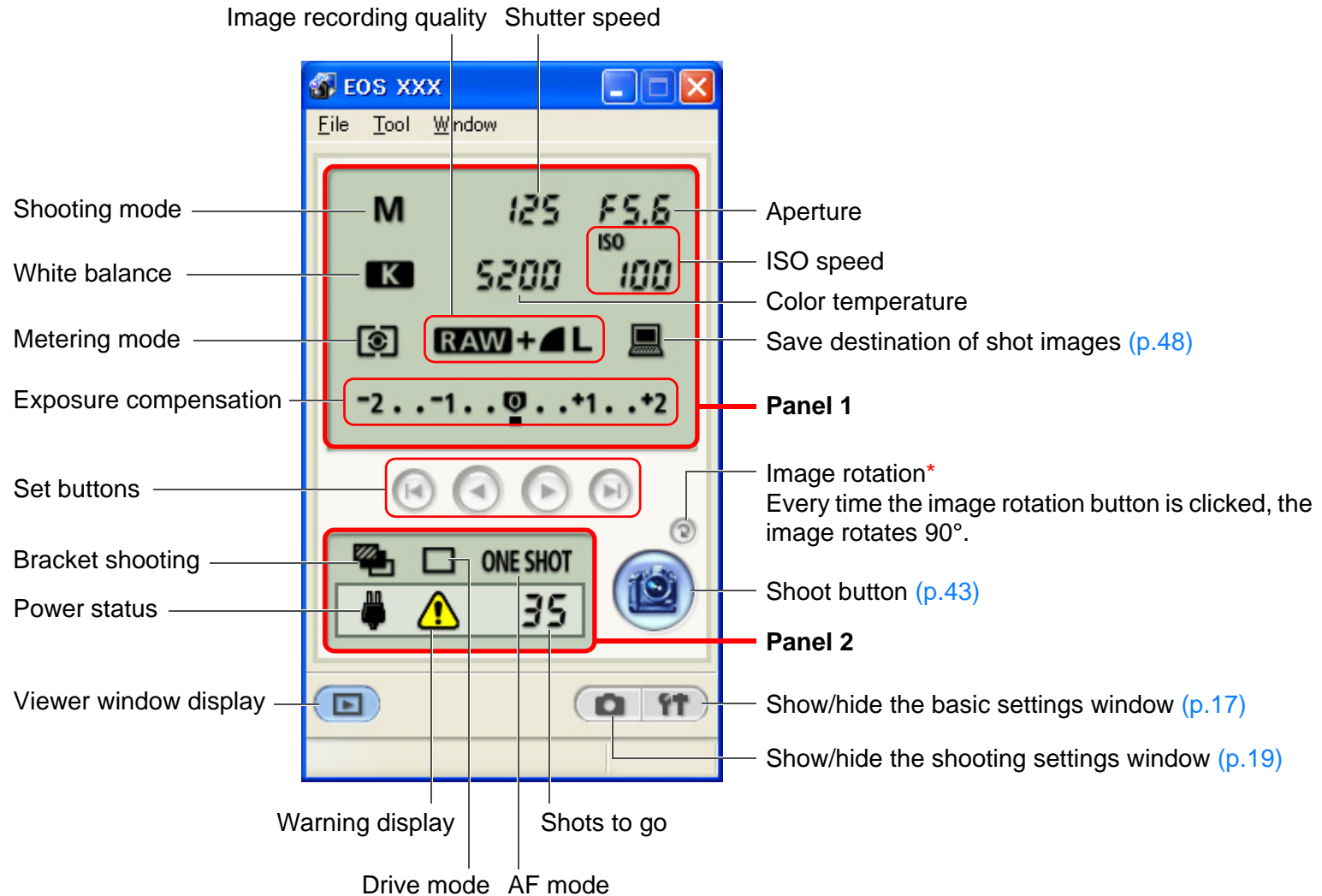
Reference

Index





# List of Camera Settings/Remote Shooting Window Functions



Panel 1: Camera setting can be checked and changed

Panel 2: Camera settings can be checked

\*To enable this function, checkmark [Rotate image] in the [Remote Shooting] tab sheet (p.48) of the preferences.

Introduction

Contents at a Glance

Downloading Images

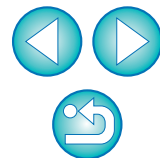
Camera Settings

Remote Shooting

Preferences

Reference

Index



# Index

## A

Adjusting the White Balance .....	27
Applying Picture Style Files .....	24

## B

Basic Settings (Preferences) .....	46
------------------------------------	----

## C

[Communication] Settings for Cameras .....	6
Connecting the Camera to Your Computer.....	5
Customizing Personal Functions .....	32

## D

Destination Folder Settings (Preferences).....	47
Download Images Settings (Preferences) .....	48
Downloading All the Images in a Single Operation.....	12
Downloading Images with a Card Reader .....	14
Downloading Selected Images .....	13

## E

Exiting the EOS Utility.....	15
------------------------------	----

## F

File Names Settings (Preferences).....	47
Folder Structure and File Names .....	54
Folder Structure and File Names in the Memory Card .....	54
Function for Use with Original Data Security Kit OSK-E3.....	53
Function for Use with OSK-E3.....	53
Function for Use with WFT-E1/E1A .....	52
Function for use with Wireless File Transmitter WFT-E1/E1A.....	52

## I

Interval Timer Shooting.....	44
------------------------------	----

## L

Linked Software Settings (Preferences) .....	48
----------------------------------------------	----

## R

Registering Personal White Balance .....	25
Remote Shooting .....	42

Remote Shooting Settings (Preferences) .....	48
----------------------------------------------	----

## S

Setting a Color Matrix .....	29
Setting JPEG Quality .....	26
Setting Parameters .....	28
Setting Picture Styles .....	21
Setting the Camera Owner's Name.....	17
Setting the Camera's Date and Time .....	17
Shooting by Operating the Camera .....	44
Specifying Preferences.....	46
Basic Settings .....	46
Destination Folder Settings.....	47
Download Images Settings .....	48
File Names Settings.....	47
Linked Software Settings .....	48
Remote Shooting Settings .....	48
Starting up EOS Utility.....	9
Supported Cameras .....	2
Supported Images .....	2
System Requirements .....	2

## T

Timer Shooting .....	44
----------------------	----

## U

Uninstalling the Driver .....	55
Uninstalling the Software.....	55

Introduction

Contents at a Glance

Downloading Images

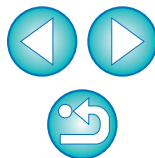
Camera Settings

Remote Shooting

Preferences

Reference

Index



## About This Instruction Manual

- It is prohibited to reproduce, in whole or part, the contents of this Instruction Manual without permission.
- Canon may change without notice the software specifications and contents of this Instruction Manual.
- The software screens and displays printed in this Instruction Manual may differ slightly from the actual software.
- The content of this Instruction Manual has been reviewed thoroughly. However, if you should notice any errors or omissions, please contact a Canon Service Center.
- Please note that irrespective of the above-mentioned, Canon does not take responsibility for the outcome of the operation of the software.

## Trademark Acknowledgments

- Microsoft and Windows are registered trademarks or trademarks of Microsoft Corporation in the United States and/or other countries.
- Other names and products not mentioned above may be registered trademarks or trademarks of their respective companies.

Introduction

Contents at a Glance

Downloading Images

Camera Settings

Remote Shooting

Preferences

Reference

Index

