



Online-Handbuch

Handbuch zu Direct Print Plus

Deutsch (German)

Inhalt

In diesem Dokument verwendete Symbole.	3
Benutzer von Touchscreen-Geräten (Windows).	4
Marken und Lizenzen.	5
Marken.	6
Lizenzen.	7
Handbuch zu Direct Print Plus.	
Hinweise für die Verwendung (Direct Print Plus).	28
Funktionen von Direct Print Plus.	30
Starten von Direct Print Plus.	31
Grundfunktionen (Startbildschirm).	32
Drucken von Dateien.	33
Erstellen von Direktaufdrucksymbolen.	34
Aufrufen von Favoriten und Drucken.	35
Drucken aus Druckverlauf.	37
Dateien im Cloud-Speicher drucken.	38
Überprüfung des Druckverlaufs.	40
Drucken in umgekehrter Reihenfolge.	41
Eingabe des PIN-Codes und Drucken.	42
Effiziente Ausrichtung auf Papier und Drucken (Schachtelung).	43
Accounting einrichten.	44
Archivordner einrichten.	46
Einschränkungen beim Drucken von PDF-Dateien.	49
Andere (Einstellungen).	50
Fehlersuche.	51

In diesem Dokument verwendete Symbole

Warnung

Anweisungen, die bei Nichtbeachtung zu tödlichen oder anderen schweren Verletzungen oder zu Sachschäden durch unsachgemäße Handhabung des Geräts führen können. Diese müssen aus Sicherheitsgründen befolgt werden.

Vorsicht

Anweisungen, die bei Nichtbeachtung zu Verletzungen oder Sachschäden durch unsachgemäße Handhabung des Geräts führen können. Diese müssen aus Sicherheitsgründen befolgt werden.

Wichtig

Anweisungen, einschließlich wichtiger Informationen, die beachtet werden müssen, um Beschädigungen und Verletzungen oder eine unsachgemäße Verwendung des Produkts zu vermeiden. Lesen Sie diese Anweisungen unbedingt.

Hinweis

Anleitungen einschließlich Hinweisen zum Betrieb oder zusätzlicher Erklärungen.

Grundlagen

Anleitungen zu den Standardfunktionen des Produkts.

Hinweis

- Die Symbole können je nach Produkt unterschiedlich aussehen.

Benutzer von Touchscreen-Geräten (Windows)

Für Touchscreen-Aktionen müssen Sie die Anweisung "klicken Sie mit der rechten Maustaste" in diesem Dokument durch die vom Betriebssystem festgelegte Aktion ersetzen. Beispiel: Wenn die Aktion "drücken und halten" in Ihrem Betriebssystem festgelegt ist, ersetzen Sie "klicken Sie mit der rechten Maustaste" mit "drücken und halten".

Marken und Lizenzen

- **Marken**
- **Lizenzen**

Marken

- Microsoft ist eine eingetragene Marke der Microsoft Corporation.
- Windows ist eine Marke oder eine eingetragene Marke der Microsoft Corporation in den USA und/oder anderen Ländern.
- Windows Vista ist eine Marke oder eine eingetragene Marke der Microsoft Corporation in den USA und/oder anderen Ländern.
- Microsoft Edge und Microsoft Excel sind Marken oder eingetragene Marken der Microsoft Corporation in den USA und/oder anderen Ländern.
- Internet Explorer ist eine Marke oder eine eingetragene Marke der Microsoft Corporation in den USA und/oder anderen Ländern.
- Mac, Mac OS, macOS, OS X, AirPort, App Store, AirPrint, das AirPrint-Logo, Safari, Bonjour, iPad, iPad Air, iPad mini, iPadOS, iPhone und iPod touch sind Marken von Apple Inc. in den USA und anderen Ländern.
- IOS ist eine Marke oder eine eingetragene Marke von Cisco in den USA und/oder anderen Ländern, die unter Lizenz verwendet wird.
- Google Cloud Print, Google Chrome, Chrome OS, Chromebook, Android, Google Drive, Google Apps und Google Analytics sind Marken oder eingetragene Marken von Google Inc. Google Play und das Google Play-Logo sind Marken von Google LLC.
- Adobe, Acrobat, Flash, Photoshop, Illustrator, Adobe RGB und Adobe RGB (1998) sind eingetragene Marken oder Marken von Adobe Systems Incorporated in den USA und/oder anderen Ländern.
- Adobe, Acrobat, Flash, Photoshop, Photoshop Elements, Lightroom, Adobe RGB und Adobe RGB (1998) sind eingetragene Marken oder Marken von Adobe Systems Incorporated in den USA und/oder anderen Ländern.
- Google, Google Home und Android sind Marken von Google LLC.
- LINE Clova ist eine eingetragene Marke der LINE Corporation.
- App Store ist eine eingetragene Marke von Apple Inc. in den USA und anderen Ländern.
- Bluetooth ist eine Marke von Bluetooth SIG, Inc., USA, und Canon Inc. verfügt über eine Lizenz.
- Autodesk und AutoCAD sind Marken oder eingetragene Marken von Autodesk, Inc. und/oder dessen Tochterunternehmen und/oder Partnern in den USA und/oder anderen Ländern.
- QR Code ist eine eingetragene Marke von DENSO WAVE INCORPORATED in Japan und anderen Ländern.
- Die Wortmarke Mopria® und das Mopria®-Logo sind eingetragene und/oder nicht eingetragene Marken von Mopria Alliance, Inc. in den USA und anderen Ländern. Die nicht autorisierte Nutzung ist streng verboten.
- HP-GL und HP-GL/2 sind eingetragene Marken oder Marken von HP Inc. in den USA und/oder anderen Ländern.
- Alle anderen in diesem Handbuch erwähnten Namen von Unternehmen oder Produkten können eingetragene Marken oder Marken der jeweiligen Unternehmen sein.

»» Hinweis

- Der offizielle Name für Windows Vista lautet Betriebssystem Microsoft Windows Vista.

Lizenzen

Copyright (c) 2003-2015 Apple Inc. All rights reserved.

Redistribution and use in source and binary forms, with or without modification, are permitted provided that the following conditions are met:

1. Redistributions of source code must retain the above copyright notice, this list of conditions and the following disclaimer.
2. Redistributions in binary form must reproduce the above copyright notice, this list of conditions and the following disclaimer in the documentation and/or other materials provided with the distribution.
3. Neither the name of Apple Inc. ("Apple") nor the names of its contributors may be used to endorse or promote products derived from this software without specific prior written permission.

THIS SOFTWARE IS PROVIDED BY APPLE AND ITS CONTRIBUTORS "AS IS" AND ANY EXPRESS OR IMPLIED WARRANTIES, INCLUDING, BUT NOT LIMITED TO, THE IMPLIED WARRANTIES OF MERCHANTABILITY AND FITNESS FOR A PARTICULAR PURPOSE ARE DISCLAIMED. IN NO EVENT SHALL APPLE OR ITS CONTRIBUTORS BE LIABLE FOR ANY DIRECT, INDIRECT, INCIDENTAL, SPECIAL, EXEMPLARY, OR CONSEQUENTIAL DAMAGES (INCLUDING, BUT NOT LIMITED TO, PROCUREMENT OF SUBSTITUTE GOODS OR SERVICES; LOSS OF USE, DATA, OR PROFITS; OR BUSINESS INTERRUPTION) HOWEVER CAUSED AND ON ANY THEORY OF LIABILITY, WHETHER IN CONTRACT, STRICT LIABILITY, OR TORT (INCLUDING NEGLIGENCE OR OTHERWISE) ARISING IN ANY WAY OUT OF THE USE OF THIS SOFTWARE, EVEN IF ADVISED OF THE POSSIBILITY OF SUCH DAMAGE.

Apache License

Version 2.0, January 2004

<http://www.apache.org/licenses/>

TERMS AND CONDITIONS FOR USE, REPRODUCTION, AND DISTRIBUTION

1. Definitions.

"License" shall mean the terms and conditions for use, reproduction, and distribution as defined by Sections 1 through 9 of this document.

"Licensor" shall mean the copyright owner or entity authorized by the copyright owner that is granting the License.

"Legal Entity" shall mean the union of the acting entity and all other entities that control, are controlled by, or are under common control with that entity. For the purposes of this definition, "control" means (i) the power, direct or indirect, to cause the direction or management of such entity, whether by contract or otherwise, or (ii) ownership of fifty percent (50%) or more of the outstanding shares, or (iii) beneficial ownership of such entity.

"You" (or "Your") shall mean an individual or Legal Entity exercising permissions granted by this License.

"Source" form shall mean the preferred form for making modifications, including but not limited to software source code, documentation source, and configuration files.

"Object" form shall mean any form resulting from mechanical transformation or translation of a Source form, including but not limited to compiled object code, generated documentation, and conversions to other media types.

"Work" shall mean the work of authorship, whether in Source or Object form, made available under the License, as indicated by a copyright notice that is included in or attached to the work (an example is provided in the Appendix below).

"Derivative Works" shall mean any work, whether in Source or Object form, that is based on (or derived from) the Work and for which the editorial revisions, annotations, elaborations, or other modifications represent, as a whole, an original work of authorship. For the purposes of this License, Derivative Works shall not include works that remain separable from, or merely link (or bind by name) to the interfaces of, the Work and Derivative Works thereof.

"Contribution" shall mean any work of authorship, including the original version of the Work and any modifications or additions to that Work or Derivative Works thereof, that is intentionally submitted to Licensor for inclusion in the Work by the copyright owner or by an individual or Legal Entity authorized to submit on behalf of the copyright owner. For the purposes of this definition, "submitted" means any form of electronic, verbal, or written communication sent to the Licensor or its representatives, including but not limited to communication on electronic mailing lists, source code control systems, and issue tracking systems that are managed by, or on behalf of, the Licensor for the purpose of discussing and improving the Work, but excluding communication that is conspicuously marked or otherwise designated in writing by the copyright owner as "Not a Contribution."

"Contributor" shall mean Licensor and any individual or Legal Entity on behalf of whom a Contribution has been received by Licensor and subsequently incorporated within the Work.

2. Grant of Copyright License. Subject to the terms and conditions of this License, each Contributor hereby grants to You a perpetual, worldwide, non-exclusive, no-charge, royalty-free, irrevocable copyright license to reproduce, prepare Derivative Works of, publicly display, publicly perform, sublicense, and distribute the Work and such Derivative Works in Source or Object form.
3. Grant of Patent License. Subject to the terms and conditions of this License, each Contributor hereby grants to You a perpetual, worldwide, non-exclusive, no-charge, royalty-free, irrevocable (except as stated in this section) patent license to make, have made, use, offer to sell, sell, import, and otherwise transfer the Work, where such license applies only to those patent claims licensable by such Contributor that are necessarily infringed by their Contribution(s) alone or by combination of their Contribution(s) with the Work to which such Contribution(s) was submitted. If You institute patent litigation against any entity (including a cross-claim or counterclaim in a lawsuit) alleging that the Work or a Contribution incorporated within the Work constitutes direct or contributory patent infringement, then any patent licenses granted to You under this License for that Work shall terminate as of the date such litigation is filed.
4. Redistribution. You may reproduce and distribute copies of the Work or Derivative Works thereof in any medium, with or without modifications, and in Source or Object form, provided that You meet the following conditions:
 1. You must give any other recipients of the Work or Derivative Works a copy of this License; and
 2. You must cause any modified files to carry prominent notices stating that You changed the files; and

3. You must retain, in the Source form of any Derivative Works that You distribute, all copyright, patent, trademark, and attribution notices from the Source form of the Work, excluding those notices that do not pertain to any part of the Derivative Works; and
4. If the Work includes a "NOTICE" text file as part of its distribution, then any Derivative Works that You distribute must include a readable copy of the attribution notices contained within such NOTICE file, excluding those notices that do not pertain to any part of the Derivative Works, in at least one of the following places: within a NOTICE text file distributed as part of the Derivative Works; within the Source form or documentation, if provided along with the Derivative Works; or, within a display generated by the Derivative Works, if and wherever such third-party notices normally appear. The contents of the NOTICE file are for informational purposes only and do not modify the License. You may add Your own attribution notices within Derivative Works that You distribute, alongside or as an addendum to the NOTICE text from the Work, provided that such additional attribution notices cannot be construed as modifying the License.

You may add Your own copyright statement to Your modifications and may provide additional or different license terms and conditions for use, reproduction, or distribution of Your modifications, or for any such Derivative Works as a whole, provided Your use, reproduction, and distribution of the Work otherwise complies with the conditions stated in this License.

5. Submission of Contributions. Unless You explicitly state otherwise, any Contribution intentionally submitted for inclusion in the Work by You to the Licensor shall be under the terms and conditions of this License, without any additional terms or conditions. Notwithstanding the above, nothing herein shall supersede or modify the terms of any separate license agreement you may have executed with Licensor regarding such Contributions.
6. Trademarks. This License does not grant permission to use the trade names, trademarks, service marks, or product names of the Licensor, except as required for reasonable and customary use in describing the origin of the Work and reproducing the content of the NOTICE file.
7. Disclaimer of Warranty. Unless required by applicable law or agreed to in writing, Licensor provides the Work (and each Contributor provides its Contributions) on an "AS IS" BASIS, WITHOUT WARRANTIES OR CONDITIONS OF ANY KIND, either express or implied, including, without limitation, any warranties or conditions of TITLE, NON-INFRINGEMENT, MERCHANTABILITY, or FITNESS FOR A PARTICULAR PURPOSE. You are solely responsible for determining the appropriateness of using or redistributing the Work and assume any risks associated with Your exercise of permissions under this License.
8. Limitation of Liability. In no event and under no legal theory, whether in tort (including negligence), contract, or otherwise, unless required by applicable law (such as deliberate and grossly negligent acts) or agreed to in writing, shall any Contributor be liable to You for damages, including any direct, indirect, special, incidental, or consequential damages of any character arising as a result of this License or out of the use or inability to use the Work (including but not limited to damages for loss of goodwill, work stoppage, computer failure or malfunction, or any and all other commercial damages or losses), even if such Contributor has been advised of the possibility of such damages.
9. Accepting Warranty or Additional Liability. While redistributing the Work or Derivative Works thereof, You may choose to offer, and charge a fee for, acceptance of support, warranty, indemnity, or other liability obligations and/or rights consistent with this License. However, in accepting such obligations, You may act only on Your own behalf and on Your sole responsibility, not on behalf of any other Contributor, and only if You agree to indemnify, defend, and hold each Contributor harmless for any liability incurred by, or claims asserted against, such Contributor by reason of your accepting any

such warranty or additional liability.
END OF TERMS AND CONDITIONS

---- Part 1: CMU/UCD copyright notice: (BSD like) ----

Copyright 1989, 1991, 1992 by Carnegie Mellon University

Derivative Work - 1996, 1998-2000

Copyright 1996, 1998-2000 The Regents of the University of California

All Rights Reserved

Permission to use, copy, modify and distribute this software and its documentation for any purpose and without fee is hereby granted, provided that the above copyright notice appears in all copies and that both that copyright notice and this permission notice appear in supporting documentation, and that the name of CMU and The Regents of the University of California not be used in advertising or publicity pertaining to distribution of the software without specific written permission.

CMU AND THE REGENTS OF THE UNIVERSITY OF CALIFORNIA DISCLAIM ALL WARRANTIES WITH REGARD TO THIS SOFTWARE, INCLUDING ALL IMPLIED WARRANTIES OF MERCHANTABILITY AND FITNESS. IN NO EVENT SHALL CMU OR THE REGENTS OF THE UNIVERSITY OF CALIFORNIA BE LIABLE FOR ANY SPECIAL, INDIRECT OR CONSEQUENTIAL DAMAGES OR ANY DAMAGES WHATSOEVER RESULTING FROM THE LOSS OF USE, DATA OR PROFITS, WHETHER IN AN ACTION OF CONTRACT, NEGLIGENCE OR OTHER TORTIOUS ACTION, ARISING OUT OF OR IN CONNECTION WITH THE USE OR PERFORMANCE OF THIS SOFTWARE.

---- Part 2: Networks Associates Technology, Inc copyright notice (BSD) ----

Copyright (c) 2001-2003, Networks Associates Technology, Inc

All rights reserved.

Redistribution and use in source and binary forms, with or without modification, are permitted provided that the following conditions are met:

- * Redistributions of source code must retain the above copyright notice, this list of conditions and the following disclaimer.
- * Redistributions in binary form must reproduce the above copyright notice, this list of conditions and the following disclaimer in the documentation and/or other materials provided with the distribution.
- * Neither the name of the Networks Associates Technology, Inc nor the names of its contributors may be used to endorse or promote products derived from this software without specific prior written permission.

THIS SOFTWARE IS PROVIDED BY THE COPYRIGHT HOLDERS AND CONTRIBUTORS "AS IS" AND ANY EXPRESS OR IMPLIED WARRANTIES, INCLUDING, BUT NOT LIMITED TO, THE IMPLIED WARRANTIES OF MERCHANTABILITY AND FITNESS FOR A PARTICULAR PURPOSE ARE DISCLAIMED. IN NO EVENT SHALL THE COPYRIGHT HOLDERS OR CONTRIBUTORS BE LIABLE FOR ANY DIRECT, INDIRECT, INCIDENTAL, SPECIAL, EXEMPLARY, OR CONSEQUENTIAL DAMAGES (INCLUDING, BUT NOT LIMITED TO, PROCUREMENT OF SUBSTITUTE GOODS OR SERVICES; LOSS OF USE, DATA, OR PROFITS; OR BUSINESS INTERRUPTION) HOWEVER CAUSED AND ON ANY THEORY OF LIABILITY, WHETHER IN CONTRACT, STRICT LIABILITY, OR TORT (INCLUDING NEGLIGENCE OR OTHERWISE) ARISING IN ANY WAY OUT OF THE USE OF THIS SOFTWARE, EVEN IF ADVISED OF THE POSSIBILITY OF SUCH DAMAGE.

---- Part 3: Cambridge Broadband Ltd. copyright notice (BSD) -----

Portions of this code are copyright (c) 2001-2003, Cambridge Broadband Ltd.

All rights reserved.

Redistribution and use in source and binary forms, with or without modification, are permitted provided that the following conditions are met:

- * Redistributions of source code must retain the above copyright notice, this list of conditions and the following disclaimer.
- * Redistributions in binary form must reproduce the above copyright notice, this list of conditions and the following disclaimer in the documentation and/or other materials provided with the distribution.
- * The name of Cambridge Broadband Ltd. may not be used to endorse or promote products derived from this software without specific prior written permission.

THIS SOFTWARE IS PROVIDED BY THE COPYRIGHT HOLDER ``AS IS" AND ANY EXPRESS OR IMPLIED WARRANTIES, INCLUDING, BUT NOT LIMITED TO, THE IMPLIED WARRANTIES OF MERCHANTABILITY AND FITNESS FOR A PARTICULAR PURPOSE ARE DISCLAIMED. IN NO EVENT SHALL THE COPYRIGHT HOLDER BE LIABLE FOR ANY DIRECT, INDIRECT, INCIDENTAL, SPECIAL, EXEMPLARY, OR CONSEQUENTIAL DAMAGES (INCLUDING, BUT NOT LIMITED TO, PROCUREMENT OF SUBSTITUTE GOODS OR SERVICES; LOSS OF USE, DATA, OR PROFITS; OR BUSINESS INTERRUPTION) HOWEVER CAUSED AND ON ANY THEORY OF LIABILITY, WHETHER IN CONTRACT, STRICT LIABILITY, OR TORT (INCLUDING NEGLIGENCE OR OTHERWISE) ARISING IN ANY WAY OUT OF THE USE OF THIS SOFTWARE, EVEN IF ADVISED OF THE POSSIBILITY OF SUCH DAMAGE.

---- Part 4: Sun Microsystems, Inc. copyright notice (BSD) -----

Copyright c 2003 Sun Microsystems, Inc., 4150 Network Circle, Santa Clara, California 95054, U.S.A. All rights reserved.

Use is subject to license terms below.

This distribution may include materials developed by third parties.

Sun, Sun Microsystems, the Sun logo and Solaris are trademarks or registered trademarks of Sun Microsystems, Inc. in the U.S. and other countries.

Redistribution and use in source and binary forms, with or without modification, are permitted provided that the following conditions are met:

- * Redistributions of source code must retain the above copyright notice, this list of conditions and the following disclaimer.
- * Redistributions in binary form must reproduce the above copyright notice, this list of conditions and the following disclaimer in the documentation and/or other materials provided with the distribution.
- * Neither the name of the Sun Microsystems, Inc. nor the names of its contributors may be used to endorse or promote products derived from this software without specific prior written permission.

THIS SOFTWARE IS PROVIDED BY THE COPYRIGHT HOLDERS AND CONTRIBUTORS ``AS IS" AND ANY EXPRESS OR IMPLIED WARRANTIES, INCLUDING, BUT NOT LIMITED TO, THE IMPLIED WARRANTIES OF MERCHANTABILITY AND FITNESS FOR A PARTICULAR PURPOSE ARE DISCLAIMED. IN NO EVENT SHALL THE COPYRIGHT HOLDERS OR CONTRIBUTORS BE LIABLE FOR ANY DIRECT, INDIRECT, INCIDENTAL, SPECIAL, EXEMPLARY, OR CONSEQUENTIAL DAMAGES (INCLUDING, BUT NOT LIMITED TO, PROCUREMENT OF SUBSTITUTE GOODS OR

SERVICES; LOSS OF USE, DATA, OR PROFITS; OR BUSINESS INTERRUPTION) HOWEVER CAUSED AND ON ANY THEORY OF LIABILITY, WHETHER IN CONTRACT, STRICT LIABILITY, OR TORT (INCLUDING NEGLIGENCE OR OTHERWISE) ARISING IN ANY WAY OUT OF THE USE OF THIS SOFTWARE, EVEN IF ADVISED OF THE POSSIBILITY OF SUCH DAMAGE.

---- Part 5: Sparta, Inc copyright notice (BSD) ----

Copyright (c) 2003-2012, Sparta, Inc

All rights reserved.

Redistribution and use in source and binary forms, with or without modification, are permitted provided that the following conditions are met:

- * Redistributions of source code must retain the above copyright notice, this list of conditions and the following disclaimer.
- * Redistributions in binary form must reproduce the above copyright notice, this list of conditions and the following disclaimer in the documentation and/or other materials provided with the distribution.
- * Neither the name of Sparta, Inc nor the names of its contributors may be used to endorse or promote products derived from this software without specific prior written permission.

THIS SOFTWARE IS PROVIDED BY THE COPYRIGHT HOLDERS AND CONTRIBUTORS ``AS IS'' AND ANY EXPRESS OR IMPLIED WARRANTIES, INCLUDING, BUT NOT LIMITED TO, THE IMPLIED WARRANTIES OF MERCHANTABILITY AND FITNESS FOR A PARTICULAR PURPOSE ARE DISCLAIMED. IN NO EVENT SHALL THE COPYRIGHT HOLDERS OR CONTRIBUTORS BE LIABLE FOR ANY DIRECT, INDIRECT, INCIDENTAL, SPECIAL, EXEMPLARY, OR CONSEQUENTIAL DAMAGES (INCLUDING, BUT NOT LIMITED TO, PROCUREMENT OF SUBSTITUTE GOODS OR SERVICES; LOSS OF USE, DATA, OR PROFITS; OR BUSINESS INTERRUPTION) HOWEVER CAUSED AND ON ANY THEORY OF LIABILITY, WHETHER IN CONTRACT, STRICT LIABILITY, OR TORT (INCLUDING NEGLIGENCE OR OTHERWISE) ARISING IN ANY WAY OUT OF THE USE OF THIS SOFTWARE, EVEN IF ADVISED OF THE POSSIBILITY OF SUCH DAMAGE.

---- Part 6: Cisco/BUPTNIC copyright notice (BSD) ----

Copyright (c) 2004, Cisco, Inc and Information Network Center of Beijing University of Posts and Telecommunications.

All rights reserved.

Redistribution and use in source and binary forms, with or without modification, are permitted provided that the following conditions are met:

- * Redistributions of source code must retain the above copyright notice, this list of conditions and the following disclaimer.
- * Redistributions in binary form must reproduce the above copyright notice, this list of conditions and the following disclaimer in the documentation and/or other materials provided with the distribution.
- * Neither the name of Cisco, Inc, Beijing University of Posts and Telecommunications, nor the names of their contributors may be used to endorse or promote products derived from this software without specific prior written permission.

THIS SOFTWARE IS PROVIDED BY THE COPYRIGHT HOLDERS AND CONTRIBUTORS ``AS IS'' AND ANY EXPRESS OR IMPLIED WARRANTIES, INCLUDING, BUT NOT LIMITED TO, THE IMPLIED WARRANTIES OF MERCHANTABILITY AND FITNESS FOR A PARTICULAR PURPOSE

ARE DISCLAIMED. IN NO EVENT SHALL THE COPYRIGHT HOLDERS OR CONTRIBUTORS BE LIABLE FOR ANY DIRECT, INDIRECT, INCIDENTAL, SPECIAL, EXEMPLARY, OR CONSEQUENTIAL DAMAGES (INCLUDING, BUT NOT LIMITED TO, PROCUREMENT OF SUBSTITUTE GOODS OR SERVICES; LOSS OF USE, DATA, OR PROFITS; OR BUSINESS INTERRUPTION) HOWEVER CAUSED AND ON ANY THEORY OF LIABILITY, WHETHER IN CONTRACT, STRICT LIABILITY, OR TORT (INCLUDING NEGLIGENCE OR OTHERWISE) ARISING IN ANY WAY OUT OF THE USE OF THIS SOFTWARE, EVEN IF ADVISED OF THE POSSIBILITY OF SUCH DAMAGE.

---- Part 7: Fabasoft R&D Software GmbH & Co KG copyright notice (BSD) ----

Copyright (c) Fabasoft R&D Software GmbH & Co KG, 2003 oss@fabasoft.com

Author: Bernhard Penz <bernhard.penz@fabasoft.com>

Redistribution and use in source and binary forms, with or without modification, are permitted provided that the following conditions are met:

- * Redistributions of source code must retain the above copyright notice, this list of conditions and the following disclaimer.
- * Redistributions in binary form must reproduce the above copyright notice, this list of conditions and the following disclaimer in the documentation and/or other materials provided with the distribution.
- * The name of Fabasoft R&D Software GmbH & Co KG or any of its subsidiaries, brand or product names may not be used to endorse or promote products derived from this software without specific prior written permission.

THIS SOFTWARE IS PROVIDED BY THE COPYRIGHT HOLDER "AS IS" AND ANY EXPRESS OR IMPLIED WARRANTIES, INCLUDING, BUT NOT LIMITED TO, THE IMPLIED WARRANTIES OF MERCHANTABILITY AND FITNESS FOR A PARTICULAR PURPOSE ARE DISCLAIMED. IN NO EVENT SHALL THE COPYRIGHT HOLDER BE LIABLE FOR ANY DIRECT, INDIRECT, INCIDENTAL, SPECIAL, EXEMPLARY, OR CONSEQUENTIAL DAMAGES (INCLUDING, BUT NOT LIMITED TO, PROCUREMENT OF SUBSTITUTE GOODS OR SERVICES; LOSS OF USE, DATA, OR PROFITS; OR BUSINESS INTERRUPTION) HOWEVER CAUSED AND ON ANY THEORY OF LIABILITY, WHETHER IN CONTRACT, STRICT LIABILITY, OR TORT (INCLUDING NEGLIGENCE OR OTHERWISE) ARISING IN ANY WAY OUT OF THE USE OF THIS SOFTWARE, EVEN IF ADVISED OF THE POSSIBILITY OF SUCH DAMAGE.

---- Part 8: Apple Inc. copyright notice (BSD) ----

Copyright (c) 2007 Apple Inc. All rights reserved.

Redistribution and use in source and binary forms, with or without modification, are permitted provided that the following conditions are met:

1. Redistributions of source code must retain the above copyright notice, this list of conditions and the following disclaimer.
2. Redistributions in binary form must reproduce the above copyright notice, this list of conditions and the following disclaimer in the documentation and/or other materials provided with the distribution.
3. Neither the name of Apple Inc. ("Apple") nor the names of its contributors may be used to endorse or promote products derived from this software without specific prior written permission.

THIS SOFTWARE IS PROVIDED BY APPLE AND ITS CONTRIBUTORS "AS IS" AND ANY EXPRESS OR IMPLIED WARRANTIES, INCLUDING, BUT NOT LIMITED TO, THE IMPLIED WARRANTIES

OF MERCHANTABILITY AND FITNESS FOR A PARTICULAR PURPOSE ARE DISCLAIMED. IN NO EVENT SHALL APPLE OR ITS CONTRIBUTORS BE LIABLE FOR ANY DIRECT, INDIRECT, INCIDENTAL, SPECIAL, EXEMPLARY, OR CONSEQUENTIAL DAMAGES (INCLUDING, BUT NOT LIMITED TO, PROCUREMENT OF SUBSTITUTE GOODS OR SERVICES; LOSS OF USE, DATA, OR PROFITS; OR BUSINESS INTERRUPTION) HOWEVER CAUSED AND ON ANY THEORY OF LIABILITY, WHETHER IN CONTRACT, STRICT LIABILITY, OR TORT (INCLUDING NEGLIGENCE OR OTHERWISE) ARISING IN ANY WAY OUT OF THE USE OF THIS SOFTWARE, EVEN IF ADVISED OF THE POSSIBILITY OF SUCH DAMAGE.

---- Part 9: ScienceLogic, LLC copyright notice (BSD) -----

Copyright (c) 2009, ScienceLogic, LLC

All rights reserved.

Redistribution and use in source and binary forms, with or without modification, are permitted provided that the following conditions are met:

- * Redistributions of source code must retain the above copyright notice, this list of conditions and the following disclaimer.
- * Redistributions in binary form must reproduce the above copyright notice, this list of conditions and the following disclaimer in the documentation and/or other materials provided with the distribution.
- * Neither the name of ScienceLogic, LLC nor the names of its contributors may be used to endorse or promote products derived from this software without specific prior written permission.

THIS SOFTWARE IS PROVIDED BY THE COPYRIGHT HOLDERS AND CONTRIBUTORS "AS IS" AND ANY EXPRESS OR IMPLIED WARRANTIES, INCLUDING, BUT NOT LIMITED TO, THE IMPLIED WARRANTIES OF MERCHANTABILITY AND FITNESS FOR A PARTICULAR PURPOSE ARE DISCLAIMED. IN NO EVENT SHALL THE COPYRIGHT HOLDERS OR CONTRIBUTORS BE LIABLE FOR ANY DIRECT, INDIRECT, INCIDENTAL, SPECIAL, EXEMPLARY, OR CONSEQUENTIAL DAMAGES (INCLUDING, BUT NOT LIMITED TO, PROCUREMENT OF SUBSTITUTE GOODS OR SERVICES; LOSS OF USE, DATA, OR PROFITS; OR BUSINESS INTERRUPTION) HOWEVER CAUSED AND ON ANY THEORY OF LIABILITY, WHETHER IN CONTRACT, STRICT LIABILITY, OR TORT (INCLUDING NEGLIGENCE OR OTHERWISE) ARISING IN ANY WAY OUT OF THE USE OF THIS SOFTWARE, EVEN IF ADVISED OF THE POSSIBILITY OF SUCH DAMAGE.

MIT License

Copyright (c) 1998, 1999, 2000 Thai Open Source Software Center Ltd

Permission is hereby granted, free of charge, to any person obtaining a copy of this software and associated documentation files (the "Software"), to deal in the Software without restriction, including without limitation the rights to use, copy, modify, merge, publish, distribute, sublicense, and/or sell copies of the Software, and to permit persons to whom the Software is furnished to do so, subject to the following conditions:

The above copyright notice and this permission notice shall be included in all copies or substantial portions of the Software.

THE SOFTWARE IS PROVIDED "AS IS", WITHOUT WARRANTY OF ANY KIND, EXPRESS OR IMPLIED, INCLUDING BUT NOT LIMITED TO THE WARRANTIES OF MERCHANTABILITY, FITNESS FOR A PARTICULAR PURPOSE AND NONINFRINGEMENT. IN NO EVENT SHALL THE AUTHORS

OR COPYRIGHT HOLDERS BE LIABLE FOR ANY CLAIM, DAMAGES OR OTHER LIABILITY, WHETHER IN AN ACTION OF CONTRACT, TORT OR OTHERWISE, ARISING FROM, OUT OF OR IN CONNECTION WITH THE SOFTWARE OR THE USE OR OTHER DEALINGS IN THE SOFTWARE.

Copyright 2000 Computing Research Labs, New Mexico State University

Copyright 2001-2015 Francesco Zappa Nardelli

Permission is hereby granted, free of charge, to any person obtaining a copy of this software and associated documentation files (the "Software"), to deal in the Software without restriction, including without limitation the rights to use, copy, modify, merge, publish, distribute, sublicense, and/or sell copies of the Software, and to permit persons to whom the Software is furnished to do so, subject to the following conditions:

The above copyright notice and this permission notice shall be included in all copies or substantial portions of the Software.

THE SOFTWARE IS PROVIDED "AS IS", WITHOUT WARRANTY OF ANY KIND, EXPRESS OR IMPLIED, INCLUDING BUT NOT LIMITED TO THE WARRANTIES OF MERCHANTABILITY, FITNESS FOR A PARTICULAR PURPOSE AND NONINFRINGEMENT. IN NO EVENT SHALL THE COMPUTING RESEARCH LAB OR NEW MEXICO STATE UNIVERSITY BE LIABLE FOR ANY CLAIM, DAMAGES OR OTHER LIABILITY, WHETHER IN AN ACTION OF CONTRACT, TORT OR OTHERWISE, ARISING FROM, OUT OF OR IN CONNECTION WITH THE SOFTWARE OR THE USE OR OTHER DEALINGS IN THE SOFTWARE.

Written by Joel Sherrill <joel@OARcorp.com>.

COPYRIGHT (c) 1989-2000.

On-Line Applications Research Corporation (OAR).

Permission to use, copy, modify, and distribute this software for any purpose without fee is hereby granted, provided that this entire notice is included in all copies of any software which is or includes a copy or modification of this software.

THIS SOFTWARE IS BEING PROVIDED "AS IS", WITHOUT ANY EXPRESS OR IMPLIED WARRANTY. IN PARTICULAR, THE AUTHOR MAKES NO REPRESENTATION OR WARRANTY OF ANY KIND CONCERNING THE MERCHANTABILITY OF THIS SOFTWARE OR ITS FITNESS FOR ANY PARTICULAR PURPOSE.

(1) Red Hat Incorporated

Copyright (c) 1994-2009 Red Hat, Inc. All rights reserved.

This copyrighted material is made available to anyone wishing to use, modify, copy, or redistribute it subject to the terms and conditions of the BSD License. This program is distributed in the hope that it will be useful, but WITHOUT ANY WARRANTY expressed or implied, including the implied warranties of MERCHANTABILITY or FITNESS FOR A PARTICULAR PURPOSE. A copy of this license is available at <http://www.opensource.org/licenses>. Any Red Hat trademarks that are incorporated in the source code or documentation are not subject to the BSD License and may only be used or replicated with the express permission of Red Hat, Inc.

(2) University of California, Berkeley

Copyright (c) 1981-2000 The Regents of the University of California.

All rights reserved.

Redistribution and use in source and binary forms, with or without modification, are permitted provided that the following conditions are met:

- * Redistributions of source code must retain the above copyright notice, this list of conditions and the following disclaimer.
- * Redistributions in binary form must reproduce the above copyright notice, this list of conditions and the following disclaimer in the documentation and/or other materials provided with the distribution.
- * Neither the name of the University nor the names of its contributors may be used to endorse or promote products derived from this software without specific prior written permission.

THIS SOFTWARE IS PROVIDED BY THE COPYRIGHT HOLDERS AND CONTRIBUTORS "AS IS" AND ANY EXPRESS OR IMPLIED WARRANTIES, INCLUDING, BUT NOT LIMITED TO, THE IMPLIED WARRANTIES OF MERCHANTABILITY AND FITNESS FOR A PARTICULAR PURPOSE ARE DISCLAIMED. IN NO EVENT SHALL THE COPYRIGHT OWNER OR CONTRIBUTORS BE LIABLE FOR ANY DIRECT, INDIRECT, INCIDENTAL, SPECIAL, EXEMPLARY, OR CONSEQUENTIAL DAMAGES (INCLUDING, BUT NOT LIMITED TO, PROCUREMENT OF SUBSTITUTE GOODS OR SERVICES; LOSS OF USE, DATA, OR PROFITS; OR BUSINESS INTERRUPTION) HOWEVER CAUSED AND ON ANY THEORY OF LIABILITY, WHETHER IN CONTRACT, STRICT LIABILITY, OR TORT (INCLUDING NEGLIGENCE OR OTHERWISE) ARISING IN ANY WAY OUT OF THE USE OF THIS SOFTWARE, EVEN IF ADVISED OF THE POSSIBILITY OF SUCH DAMAGE.

The FreeType Project LICENSE

2006-Jan-27

Copyright 1996-2002, 2006 by

David Turner, Robert Wilhelm, and Werner Lemberg

Introduction

=====

The FreeType Project is distributed in several archive packages; some of them may contain, in addition to the FreeType font engine, various tools and contributions which rely on, or relate to, the FreeType Project.

This license applies to all files found in such packages, and which do not fall under their own explicit license. The license affects thus the FreeType font engine, the test programs, documentation and makefiles, at the very least.

This license was inspired by the BSD, Artistic, and IJG (Independent JPEG Group) licenses, which all encourage inclusion and use of free software in commercial and freeware products alike. As a consequence, its main points are that:

- o We don't promise that this software works. However, we will be interested in any kind of bug reports. (``as is'` distribution)
- o You can use this software for whatever you want, in parts or full form, without having to pay us. (``royalty-free'` usage)
- o You may not pretend that you wrote this software. If you use it, or only parts of it, in a program, you must acknowledge somewhere in your documentation that you have used the FreeType code. (``credits'`)

We specifically permit and encourage the inclusion of this software, with or without modifications, in commercial products.

We disclaim all warranties covering The FreeType Project and assume no liability related to The FreeType Project.

Finally, many people asked us for a preferred form for a credit/disclaimer to use in compliance with this license. We thus encourage you to use the following text:

""

Portions of this software are copyright © <year> The FreeType Project (www.freetype.org). All rights reserved.

""

Please replace <year> with the value from the FreeType version you actually use.

Legal Terms

=====

0. Definitions

Throughout this license, the terms `package`, `FreeType Project`, and `FreeType archive` refer to the set of files originally distributed by the authors (David Turner, Robert Wilhelm, and Werner Lemberg) as the `FreeType Project`, be they named as alpha, beta or final release.

`You' refers to the licensee, or person using the project, where `using' is a generic term including compiling the project's source code as well as linking it to form a `program' or `executable'.

This program is referred to as `a program using the FreeType engine'.

This license applies to all files distributed in the original FreeType Project, including all source code, binaries and documentation, unless otherwise stated in the file in its original, unmodified form as distributed in the original archive.

If you are unsure whether or not a particular file is covered by this license, you must contact us to verify this.

The FreeType Project is copyright (C) 1996-2000 by David Turner, Robert Wilhelm, and Werner Lemberg. All rights reserved except as specified below.

1. No Warranty

THE FREETYPE PROJECT IS PROVIDED `AS IS' WITHOUT WARRANTY OF ANY KIND, EITHER EXPRESS OR IMPLIED, INCLUDING, BUT NOT LIMITED TO, WARRANTIES OF MERCHANTABILITY AND FITNESS FOR A PARTICULAR PURPOSE. IN NO EVENT WILL ANY OF THE AUTHORS OR COPYRIGHT HOLDERS BE LIABLE FOR ANY DAMAGES CAUSED BY THE USE OR THE INABILITY TO USE, OF THE FREETYPE PROJECT.

2. Redistribution

This license grants a worldwide, royalty-free, perpetual and irrevocable right and license to use, execute, perform, compile, display, copy, create derivative works of, distribute and sublicense the FreeType Project

(in both source and object code forms) and derivative works thereof for any purpose; and to authorize others to exercise some or all of the rights granted herein, subject to the following conditions:

- o Redistribution of source code must retain this license file ('FTL.TXT') unaltered; any additions, deletions or changes to the original files must be clearly indicated in accompanying documentation. The copyright notices of the unaltered, original files must be preserved in all copies of source files.

- o Redistribution in binary form must provide a disclaimer that states that the software is based in part of the work of the FreeType Team, in the distribution documentation. We also encourage you to put an URL to the FreeType web page in your documentation, though this isn't mandatory.

These conditions apply to any software derived from or based on the FreeType Project, not just the unmodified files. If you use our work, you must acknowledge us. However, no fee need be paid to us.

3. Advertising

Neither the FreeType authors and contributors nor you shall use the name of the other for commercial, advertising, or promotional purposes without specific prior written permission.

We suggest, but do not require, that you use one or more of the following phrases to refer to this software in your documentation or advertising materials: 'FreeType Project', 'FreeType Engine', 'FreeType library', or 'FreeType Distribution'.

As you have not signed this license, you are not required to accept it. However, as the FreeType Project is copyrighted material, only this license, or another one contracted with the authors, grants you the right to use, distribute, and modify it.

Therefore, by using, distributing, or modifying the FreeType Project, you indicate that you understand and accept all the terms of this license.

4. Contacts

There are two mailing lists related to FreeType:

- o freetype@nongnu.org

Discusses general use and applications of FreeType, as well as future and wanted additions to the library and distribution.

If you are looking for support, start in this list if you haven't found anything to help you in the documentation.

- o freetype-devel@nongnu.org

Discusses bugs, as well as engine internals, design issues, specific licenses, porting, etc.

Our home page can be found at

<http://www.freetype.org>

--- end of FTL.TXT ---

The TWAIN Toolkit is distributed as is. The developer and distributors of the TWAIN Toolkit expressly disclaim all implied, express or statutory warranties including, without limitation, the implied warranties of merchantability, noninfringement of third party rights and fitness for a particular purpose. Neither the

developers nor the distributors will be liable for damages, whether direct, indirect, special, incidental, or consequential, as a result of the reproduction, modification, distribution or other use of the TWAIN Toolkit.

JSON for Modern C++

Copyright (c) 2013-2017 Niels Lohmann

Permission is hereby granted, free of charge, to any person obtaining a copy of this software and associated documentation files (the "Software"), to deal in the Software without restriction, including without limitation the rights to use, copy, modify, merge, publish, distribute, sublicense, and/or sell copies of the Software, and to permit persons to whom the Software is furnished to do so, subject to the following conditions:

The above copyright notice and this permission notice shall be included in all copies or substantial portions of the Software.

THE SOFTWARE IS PROVIDED "AS IS", WITHOUT WARRANTY OF ANY KIND, EXPRESS OR IMPLIED, INCLUDING BUT NOT LIMITED TO THE WARRANTIES OF MERCHANTABILITY, FITNESS FOR A PARTICULAR PURPOSE AND NONINFRINGEMENT. IN NO EVENT SHALL THE AUTHORS OR COPYRIGHT HOLDERS BE LIABLE FOR ANY CLAIM, DAMAGES OR OTHER LIABILITY, WHETHER IN AN ACTION OF CONTRACT, TORT OR OTHERWISE, ARISING FROM, OUT OF OR IN CONNECTION WITH THE SOFTWARE OR THE USE OR OTHER DEALINGS IN THE SOFTWARE.

Copyright (c) 2011 - 2015 ARM LIMITED

All rights reserved.

Redistribution and use in source and binary forms, with or without modification, are permitted provided that the following conditions are met:

- Redistributions of source code must retain the above copyright notice, this list of conditions and the following disclaimer.
- Redistributions in binary form must reproduce the above copyright notice, this list of conditions and the following disclaimer in the documentation and/or other materials provided with the distribution.
- Neither the name of ARM nor the names of its contributors may be used to endorse or promote products derived from this software without specific prior written permission.

THIS SOFTWARE IS PROVIDED BY THE COPYRIGHT HOLDERS AND CONTRIBUTORS "AS IS" AND ANY EXPRESS OR IMPLIED WARRANTIES, INCLUDING, BUT NOT LIMITED TO, THE IMPLIED WARRANTIES OF MERCHANTABILITY AND FITNESS FOR A PARTICULAR PURPOSE ARE DISCLAIMED. IN NO EVENT SHALL COPYRIGHT HOLDERS AND CONTRIBUTORS BE LIABLE FOR ANY DIRECT, INDIRECT, INCIDENTAL, SPECIAL, EXEMPLARY, OR CONSEQUENTIAL DAMAGES (INCLUDING, BUT NOT LIMITED TO, PROCUREMENT OF SUBSTITUTE GOODS OR SERVICES; LOSS OF USE, DATA, OR PROFITS; OR BUSINESS INTERRUPTION) HOWEVER CAUSED AND ON ANY THEORY OF LIABILITY, WHETHER IN CONTRACT, STRICT LIABILITY, OR TORT (INCLUDING NEGLIGENCE OR OTHERWISE) ARISING IN ANY WAY OUT OF THE USE OF THIS SOFTWARE, EVEN IF ADVISED OF THE POSSIBILITY OF SUCH DAMAGE.

Copyright (c) 2014, Kenneth MacKay

All rights reserved.

Redistribution and use in source and binary forms, with or without modification, are permitted provided that the following conditions are met:

- * Redistributions of source code must retain the above copyright notice, this list of conditions and the following disclaimer.

- * Redistributions in binary form must reproduce the above copyright notice, this list of conditions and the following disclaimer in the documentation and/or other materials provided with the distribution.

THIS SOFTWARE IS PROVIDED BY THE COPYRIGHT HOLDERS AND CONTRIBUTORS "AS IS" AND ANY EXPRESS OR IMPLIED WARRANTIES, INCLUDING, BUT NOT LIMITED TO, THE IMPLIED WARRANTIES OF MERCHANTABILITY AND FITNESS FOR A PARTICULAR PURPOSE ARE DISCLAIMED. IN NO EVENT SHALL THE COPYRIGHT HOLDER OR CONTRIBUTORS BE LIABLE FOR ANY DIRECT, INDIRECT, INCIDENTAL, SPECIAL, EXEMPLARY, OR CONSEQUENTIAL DAMAGES (INCLUDING, BUT NOT LIMITED TO, PROCUREMENT OF SUBSTITUTE GOODS OR SERVICES; LOSS OF USE, DATA, OR PROFITS; OR BUSINESS INTERRUPTION) HOWEVER CAUSED AND ON ANY THEORY OF LIABILITY, WHETHER IN CONTRACT, STRICT LIABILITY, OR TORT (INCLUDING NEGLIGENCE OR OTHERWISE) ARISING IN ANY WAY OUT OF THE USE OF THIS SOFTWARE, EVEN IF ADVISED OF THE POSSIBILITY OF SUCH DAMAGE.

Copyright (c) 2006, CRYPTOGRAMS by <appro@openssl.org> All rights reserved.

Redistribution and use in source and binary forms, with or without modification, are permitted provided that the following conditions are met:

- * Redistributions of source code must retain copyright notices, this list of conditions and the following disclaimer.

- * Redistributions in binary form must reproduce the above copyright notice, this list of conditions and the following disclaimer in the documentation and/or other materials provided with the distribution.

- * Neither the name of the CRYPTOGRAMS nor the names of its copyright holder and contributors may be used to endorse or promote products derived from this software without specific prior written permission.

ALTERNATIVELY, provided that this notice is retained in full, this product may be distributed under the terms of the GNU General Public License (GPL), in which case the provisions of the GPL apply INSTEAD OF those given above.

THIS SOFTWARE IS PROVIDED BY THE COPYRIGHT HOLDER AND CONTRIBUTORS "AS IS" AND ANY EXPRESS OR IMPLIED WARRANTIES, INCLUDING, BUT NOT LIMITED TO, THE IMPLIED WARRANTIES OF MERCHANTABILITY AND FITNESS FOR A PARTICULAR PURPOSE ARE DISCLAIMED. IN NO EVENT SHALL THE COPYRIGHT OWNER OR CONTRIBUTORS BE LIABLE FOR ANY DIRECT, INDIRECT, INCIDENTAL, SPECIAL, EXEMPLARY, OR CONSEQUENTIAL DAMAGES (INCLUDING, BUT NOT LIMITED TO, PROCUREMENT OF SUBSTITUTE GOODS OR SERVICES; LOSS OF USE, DATA, OR PROFITS; OR BUSINESS INTERRUPTION) HOWEVER CAUSED AND ON ANY THEORY OF LIABILITY, WHETHER IN CONTRACT, STRICT LIABILITY, OR TORT (INCLUDING NEGLIGENCE OR OTHERWISE) ARISING IN ANY WAY OUT OF THE USE OF THIS SOFTWARE, EVEN IF ADVISED OF THE POSSIBILITY OF SUCH DAMAGE.

ISC License

Copyright (c) 2013-2017

Frank Denis <j at pureftpd dot org>

Permission to use, copy, modify, and/or distribute this software for any purpose with or without fee is hereby granted, provided that the above copyright notice and this permission notice appear in all copies.

THE SOFTWARE IS PROVIDED "AS IS" AND THE AUTHOR DISCLAIMS ALL WARRANTIES WITH REGARD TO THIS SOFTWARE INCLUDING ALL IMPLIED WARRANTIES OF MERCHANTABILITY AND FITNESS. IN NO EVENT SHALL THE AUTHOR BE LIABLE FOR ANY SPECIAL, DIRECT, INDIRECT, OR CONSEQUENTIAL DAMAGES OR ANY DAMAGES WHATSOEVER RESULTING FROM LOSS OF USE, DATA OR PROFITS, WHETHER IN AN ACTION OF CONTRACT, NEGLIGENCE OR OTHER TORTIOUS ACTION, ARISING OUT OF OR IN CONNECTION WITH THE USE OR PERFORMANCE OF THIS SOFTWARE.

Copyright (c) 2008 The NetBSD Foundation, Inc.

All rights reserved.

This code is derived from software contributed to The NetBSD Foundation by Lennart Augustsson (lennart@augustsson.net) at Carlstedt Research & Technology.

Redistribution and use in source and binary forms, with or without modification, are permitted provided that the following conditions are met:

1. Redistributions of source code must retain the above copyright notice, this list of conditions and the following disclaimer.
2. Redistributions in binary form must reproduce the above copyright notice, this list of conditions and the following disclaimer in the documentation and/or other materials provided with the distribution.

THIS SOFTWARE IS PROVIDED BY THE NETBSD FOUNDATION, INC. AND CONTRIBUTORS "AS IS" AND ANY EXPRESS OR IMPLIED WARRANTIES, INCLUDING, BUT NOT LIMITED TO, THE IMPLIED WARRANTIES OF MERCHANTABILITY AND FITNESS FOR A PARTICULAR PURPOSE ARE DISCLAIMED. IN NO EVENT SHALL THE FOUNDATION OR CONTRIBUTORS BE LIABLE FOR ANY DIRECT, INDIRECT, INCIDENTAL, SPECIAL, EXEMPLARY, OR CONSEQUENTIAL DAMAGES (INCLUDING, BUT NOT LIMITED TO, PROCUREMENT OF SUBSTITUTE GOODS OR SERVICES; LOSS OF USE, DATA, OR PROFITS; OR BUSINESS INTERRUPTION) HOWEVER CAUSED AND ON ANY THEORY OF LIABILITY, WHETHER IN CONTRACT, STRICT LIABILITY, OR TORT (INCLUDING NEGLIGENCE OR OTHERWISE) ARISING IN ANY WAY OUT OF THE USE OF THIS SOFTWARE, EVEN IF ADVISED OF THE POSSIBILITY OF SUCH DAMAGE.

Copyright (c) 2000 Intel Corporation

All rights reserved.

Redistribution and use in source and binary forms, with or without modification, are permitted provided that the following conditions are met:

* Redistributions of source code must retain the above copyright notice, this list of conditions and the following disclaimer.

* Redistributions in binary form must reproduce the above copyright notice, this list of conditions and the following disclaimer in the documentation and/or other materials provided with the distribution.

* Neither name of Intel Corporation nor the names of its contributors may be used to endorse or promote products derived from this software without specific prior written permission.

THIS SOFTWARE IS PROVIDED BY THE COPYRIGHT HOLDERS AND CONTRIBUTORS "AS IS" AND ANY EXPRESS OR IMPLIED WARRANTIES, INCLUDING, BUT NOT LIMITED TO, THE IMPLIED WARRANTIES OF MERCHANTABILITY AND FITNESS FOR A PARTICULAR PURPOSE ARE DISCLAIMED. IN NO EVENT SHALL INTEL OR CONTRIBUTORS BE LIABLE FOR ANY DIRECT, INDIRECT, INCIDENTAL, SPECIAL, EXEMPLARY, OR CONSEQUENTIAL DAMAGES (INCLUDING, BUT NOT LIMITED TO, PROCUREMENT OF SUBSTITUTE GOODS OR SERVICES; LOSS OF USE, DATA, OR PROFITS; OR BUSINESS INTERRUPTION) HOWEVER CAUSED AND ON ANY THEORY OF LIABILITY, WHETHER IN CONTRACT, STRICT LIABILITY, OR TORT (INCLUDING NEGLIGENCE OR OTHERWISE) ARISING IN ANY WAY OUT OF THE USE OF THIS SOFTWARE, EVEN IF ADVISED OF THE POSSIBILITY OF SUCH DAMAGE.

Lua

Copyright © 1994–2014 Lua.org, PUC-Rio.

Permission is hereby granted, free of charge, to any person obtaining a copy of this software and associated

documentation files (the "Software"), to deal in the Software without restriction, including without limitation the

rights to use, copy, modify, merge, publish, distribute, sublicense, and/or sell copies of the Software, and to

permit persons to whom the Software is furnished to do so, subject to the following conditions:

The above copyright notice and this permission notice shall be included in all copies or substantial portions of the Software.

THE SOFTWARE IS PROVIDED "AS IS", WITHOUT WARRANTY OF ANY KIND, EXPRESS OR IMPLIED,

INCLUDING BUT NOT LIMITED TO THE WARRANTIES OF MERCHANTABILITY, FITNESS FOR A PARTICULAR PURPOSE AND NONINFRINGEMENT. IN NO EVENT SHALL THE AUTHORS OR COPYRIGHT HOLDERS BE LIABLE FOR ANY CLAIM, DAMAGES OR OTHER LIABILITY, WHETHER IN AN

ACTION OF CONTRACT, TORT OR OTHERWISE, ARISING FROM, OUT OF OR IN CONNECTION WITH

THE SOFTWARE OR THE USE OR OTHER DEALINGS IN THE SOFTWARE.

LuaSocket

LuaSocket 2.0.2 license

Copyright © 2004-2007 Diego Nehab

Permission is hereby granted, free of charge, to any person obtaining a copy of this software and associated documentation files (the "Software"), to deal in the Software without restriction, including without limitation the rights to use, copy, modify, merge, publish, distribute, sublicense, and/or sell copies of the Software, and to permit persons to whom the Software is furnished to do so, subject to the following conditions:

The above copyright notice and this permission notice shall be included in all copies or substantial portions of the Software.

THE SOFTWARE IS PROVIDED "AS IS", WITHOUT WARRANTY OF ANY KIND, EXPRESS OR IMPLIED, INCLUDING BUT NOT LIMITED TO THE WARRANTIES OF MERCHANTABILITY, FITNESS FOR A PARTICULAR PURPOSE AND NONINFRINGEMENT. IN NO EVENT SHALL THE AUTHORS OR COPYRIGHT HOLDERS BE LIABLE FOR ANY CLAIM, DAMAGES OR OTHER LIABILITY, WHETHER IN AN ACTION OF CONTRACT, TORT OR OTHERWISE, ARISING FROM, OUT OF OR IN CONNECTION WITH THE SOFTWARE OR THE USE OR OTHER DEALINGS IN THE SOFTWARE.

LuneScript

Copyright (c) 2018 ifritJP

Permission is hereby granted, free of charge, to any person obtaining a copy of this software and associated documentation files (the "Software"), to deal in the Software without restriction, including without limitation the rights to use, copy, modify, merge, publish, distribute, sublicense, and/or sell copies of the Software, and to permit persons to whom the Software is furnished to do so, subject to the following conditions:

The above copyright notice and this permission notice shall be included in all copies or substantial portions of the Software.

THE SOFTWARE IS PROVIDED "AS IS", WITHOUT WARRANTY OF ANY KIND, EXPRESS OR IMPLIED, INCLUDING BUT NOT LIMITED TO THE WARRANTIES OF MERCHANTABILITY, FITNESS FOR A PARTICULAR PURPOSE AND NONINFRINGEMENT. IN NO EVENT SHALL THE AUTHORS OR COPYRIGHT HOLDERS BE LIABLE FOR ANY CLAIM, DAMAGES OR OTHER LIABILITY, WHETHER IN AN ACTION OF CONTRACT, TORT OR OTHERWISE, ARISING FROM, OUT OF OR IN CONNECTION WITH THE SOFTWARE OR THE USE OR OTHER DEALINGS IN THE SOFTWARE.

Copyright (c) 2002-2019, Jouni Malinen <j@w1.fi> and contributors
All Rights Reserved.

This software may be distributed, used, and modified under the terms of BSD license:

Redistribution and use in source and binary forms, with or without modification, are permitted provided that the following conditions are met:

1. Redistributions of source code must retain the above copyright notice, this list of conditions and the following disclaimer.
2. Redistributions in binary form must reproduce the above copyright notice, this list of conditions and the following disclaimer in the documentation and/or other materials provided with the distribution.
3. Neither the name(s) of the above-listed copyright holder(s) nor the names of its contributors may be used to endorse or promote products derived from this software without specific prior written permission.

THIS SOFTWARE IS PROVIDED BY THE COPYRIGHT HOLDERS AND CONTRIBUTORS "AS IS" AND ANY EXPRESS OR IMPLIED WARRANTIES, INCLUDING, BUT NOT LIMITED TO, THE IMPLIED WARRANTIES OF MERCHANTABILITY AND FITNESS FOR A PARTICULAR PURPOSE ARE DISCLAIMED. IN NO EVENT SHALL THE COPYRIGHT OWNER OR CONTRIBUTORS BE LIABLE FOR ANY DIRECT, INDIRECT, INCIDENTAL, SPECIAL, EXEMPLARY, OR CONSEQUENTIAL DAMAGES (INCLUDING, BUT NOT LIMITED TO, PROCUREMENT OF SUBSTITUTE GOODS OR SERVICES; LOSS OF USE, DATA, OR PROFITS; OR BUSINESS INTERRUPTION) HOWEVER CAUSED AND ON ANY THEORY OF LIABILITY, WHETHER IN CONTRACT, STRICT LIABILITY, OR TORT (INCLUDING NEGLIGENCE OR OTHERWISE) ARISING IN ANY WAY OUT OF THE USE OF THIS SOFTWARE, EVEN IF ADVISED OF THE POSSIBILITY OF SUCH DAMAGE.

Copyright (C) 2019, Broadcom Corporation. All Rights Reserved.

Permission to use, copy, modify, and/or distribute this software for any purpose with or without fee is hereby granted, provided that the above copyright notice and this permission notice appear in all copies.

THE SOFTWARE IS PROVIDED "AS IS" AND THE AUTHOR DISCLAIMS ALL WARRANTIES WITH REGARD TO THIS SOFTWARE INCLUDING ALL IMPLIED WARRANTIES OF MERCHANTABILITY AND FITNESS. IN NO EVENT SHALL THE AUTHOR BE LIABLE FOR ANY SPECIAL, DIRECT, INDIRECT, OR CONSEQUENTIAL DAMAGES OR ANY DAMAGES WHATSOEVER RESULTING FROM LOSS OF USE, DATA OR PROFITS, WHETHER IN AN ACTION OF CONTRACT, NEGLIGENCE OR OTHER TORTIOUS ACTION, ARISING OUT OF OR IN CONNECTION WITH THE USE OR PERFORMANCE OF THIS SOFTWARE.

Das Folgende gilt nur für Produkte, die Wi-Fi unterstützen.

(c) 2009-2013 by Jeff Mott. All rights reserved.

Redistribution and use in source and binary forms, with or without modification, are permitted provided that the following conditions are met:

- * Redistributions of source code must retain the above copyright notice, this list of conditions, and the following disclaimer.
- * Redistributions in binary form must reproduce the above copyright notice, this list of conditions, and the following disclaimer in the documentation or other materials provided with the distribution.

* Neither the name CryptoJS nor the names of its contributors may be used to endorse or promote products derived from this software without specific prior written permission.

THIS SOFTWARE IS PROVIDED BY THE COPYRIGHT HOLDERS AND CONTRIBUTORS "AS IS," AND ANY EXPRESS OR IMPLIED WARRANTIES, INCLUDING, BUT NOT LIMITED TO, THE IMPLIED WARRANTIES OF MERCHANTABILITY AND FITNESS FOR A PARTICULAR PURPOSE, ARE DISCLAIMED. IN NO EVENT SHALL THE COPYRIGHT HOLDER OR CONTRIBUTORS BE LIABLE FOR ANY DIRECT, INDIRECT, INCIDENTAL, SPECIAL, EXEMPLARY, OR CONSEQUENTIAL DAMAGES (INCLUDING, BUT NOT LIMITED TO, PROCUREMENT OF SUBSTITUTE GOODS OR SERVICES; LOSS OF USE, DATA, OR PROFITS; OR BUSINESS INTERRUPTION) HOWEVER CAUSED AND ON ANY THEORY OF LIABILITY, WHETHER IN CONTRACT, STRICT LIABILITY, OR TORT (INCLUDING NEGLIGENCE OR OTHERWISE) ARISING IN ANY WAY OUT OF THE USE OF THIS SOFTWARE, EVEN IF ADVISED OF THE POSSIBILITY OF SUCH DAMAGE.

Das Folgende gilt nur für Produkte, die PIXUS Cloud Link, PIXMA Cloud Link oder MAXIFY Cloud Link unterstützen.

THE BASIC LIBRARY FUNCTIONS

Written by: Philip Hazel
Email local part: ph10
Email domain: cam.ac.uk
University of Cambridge Computing Service, Cambridge, England.
Copyright (c) 1997-2012 University of Cambridge
All rights reserved.

PCRE JUST-IN-TIME COMPILATION SUPPORT

Written by: Zoltan Herczeg
Email local part: hzmester
Email domain: freemail.hu
Copyright(c) 2010-2012 Zoltan Herczeg
All rights reserved.

STACK-LESS JUST-IN-TIME COMPILER

Written by: Zoltan Herczeg
Email local part: hzmester
Email domain: freemail.hu
Copyright(c) 2009-2012 Zoltan Herczeg
All rights reserved.

THE C++ WRAPPER FUNCTIONS

Contributed by: Google Inc.
Copyright (c) 2007-2012, Google Inc.
All rights reserved.

THE "BSD" LICENCE

-----Redistribution and use in source and binary forms, with or without modification, are permitted provided that the following conditions are met:

* Redistributions of source code must retain the above copyright notice, this list of conditions and the following disclaimer.

* Redistributions in binary form must reproduce the above copyright notice, this list of conditions and the following disclaimer in the documentation and/or other materials provided with the distribution.

* Neither the name of the University of Cambridge nor the name of Google Inc. nor the names of their contributors may be used to endorse or promote products derived from this software without specific prior written permission.

THIS SOFTWARE IS PROVIDED BY THE COPYRIGHT HOLDERS AND CONTRIBUTORS "AS IS" AND ANY EXPRESS OR IMPLIED WARRANTIES, INCLUDING, BUT NOT LIMITED TO, THE IMPLIED WARRANTIES OF MERCHANTABILITY AND FITNESS FOR A PARTICULAR PURPOSE ARE DISCLAIMED. IN NO EVENT SHALL THE COPYRIGHT OWNER OR CONTRIBUTORS BE LIABLE FOR ANY DIRECT, INDIRECT, INCIDENTAL, SPECIAL, EXEMPLARY, OR CONSEQUENTIAL DAMAGES (INCLUDING, BUT NOT LIMITED TO, PROCUREMENT OF SUBSTITUTE GOODS OR SERVICES; LOSS OF USE, DATA, OR PROFITS; OR BUSINESS INTERRUPTION) HOWEVER CAUSED AND ON ANY THEORY OF LIABILITY, WHETHER IN CONTRACT, STRICT LIABILITY, OR TORT (INCLUDING NEGLIGENCE OR OTHERWISE) ARISING IN ANY WAY OUT OF THE USE OF THIS SOFTWARE, EVEN IF ADVISED OF THE POSSIBILITY OF SUCH DAMAGE.

This software is based in part on the work of the Independent JPEG Group.

Was ist Direct Print Plus?

- » [Funktionen von Direct Print Plus](#)
- » [Starten von Direct Print Plus](#)
- » [Grundfunktionen \(Startbildschirm\)](#)

Drucken von Dateien

- » [Erstellen von Direktaufdrucksymbolen](#)
- » [Aufrufen von Favoriten und Drucken](#)
- » [Drucken aus Druckverlauf](#)
- » [Dateien im Cloud-Speicher drucken](#)
- » [Überprüfung des Druckverlaufs](#)
- » [Drucken in umgekehrter Reihenfolge](#)
- » [Eingabe des PIN-Codes und Drucken](#)
- » [Effiziente Ausrichtung auf Papier und Drucken \(Schachtelung\)](#)
- » [Accounting einrichten](#)
- » [Einschränkungen beim Drucken von PDF-Dateien](#)

Weitere nützliche Funktionen

- » [Archivordner einrichten](#)
- » [Andere \(Einstellungen\)](#)
- » [Fehlersuche](#)

Hinweise für die Verwendung (Direct Print Plus)

Bei der Verwendung von Direct Print Plus gibt es folgende Einschränkungen. Sie sollten diese Hinweise in jedem Fall im Voraus lesen.

- Die folgenden Treiber müssen installiert sein.
 - Canon imagePROGRAF series: Canon imagePROGRAF Printer Driver V5.00 oder höher
 - PlotWave, ColorWave series: Driver Select for Microsoft Windows oder Océ Wide Format Printer Driver 2 for Microsoft Windows (WPD2)
- Die folgende Version von .NET Framework muss installiert sein.
 - Erforderlich: 4.6.2 oder höher
 - Empfohlen: 4.7 oder höher (Verwenden Sie diese Version, um die Software schneller auszuführen.)
- Dieses Handbuch bezieht sich in erster Linie auf Schnittstellen im Windows 10 operating system (nachstehend Windows 10).

Hinweise zur Installation

- Für die Installation sind Administratorrechte erforderlich.
- Schließen Sie vor der Installation sämtliche Anwendungen und Software.
- Wenn ein Dokument gedruckt wird, beenden Sie den Druckvorgang oder warten Sie, bis er abgeschlossen ist.

Hinweise zur Verwendung

- Die druckbaren Dateiformate sind:
 - V1.7-konforme PDF
 - * Allerdings werden Kennwortschutz, Überdrucken und bestimmte Transparenzfunktionen nicht unterstützt.
 - Rev. 6-konforme TIFF
 - JFIF 1,02-konform JPEG
 - HP-GL/2
 - * Sie können keine zu druckenden Seiten angeben.
 - * Unter **Ausgabeformat (Output size)** können Sie nur die Option **Tatsächliche Größe (Actual size)** auswählen.
 - Die bedruckbare Dokumentgröße ist dieselbe wie die Dokumentgröße, die mit dem Druckertreiber verwendet werden kann.
 - * Die Dokumentgrößen für Rasterbilder (tiff oder jpeg) werden wie folgt berechnet:
 - "Seitengröße (Zoll)" = "Pixelgröße (Pixel)" / "Auflösung (dpi)"
- Rasterbilder ohne Informationen zur Auflösung werden mit einer Auflösung von 300 dpi berechnet.

- Wenn Sie über den Druckserver drucken, setzen Sie in den **Sondereinstellungen (Special Settings)** unter **Voreinstellungen (Preferences)** die Option **Drucken im Offlinemodus zulassen (Allow printing when offline)** auf **Ein (On)**.
- Wenn Daten Bilder enthalten, die die Dokumentgrößengrenze erreichen und Sie auf dem Hauptbildschirm in **Tatsächliche Größe (Actual size)** die Option **Ausgabeformat (Output size)** auswählen, werden alle vier Seiten des Bildes, die sich außerhalb des druckbaren Bereichs befinden, nicht gedruckt.

Bezüglich Diensten von Drittanbietern

Wenn Sie Dienste von Drittanbietern bei Verwendung dieses Produkts nutzen, gelten die folgenden Bedingungen.

Wenn Sie bei Verwendung "dieses Produkts" auf Inhalte von Drittanbietern zugreifen und/oder solche abrufen (einschließlich, aber nicht beschränkt auf, Text, Bilder, Videos, Audiodaten und Software), sind die folgenden Aktionen verboten, sofern sie nicht ausdrücklich vom Eigentümer der jeweiligen Inhalte oder durch geltende Gesetze erlaubt werden:

- Extrahieren von Daten, Erstellung permanenter Kopien der genannten Daten durch Erstellung von Datenbanken oder andere Methoden oder Aufbewahrung von zwischengespeicherten Kopien für einen Zeitraum, der länger ist als durch den Cache-Control-Header erlaubt
- Kopieren, Übersetzen, Ändern, Erstellen von Derivaten, Verkaufen, Leasen, Ausleihen, Übertragen, Verteilen, öffentliches Darstellen oder Unterlizenzieren an Dritte
- Falsche Darstellung der Quelle oder des Eigentümers
- Entfernen, Verbergen oder Ändern von Copyright-Hinweisen sowie Hinweisen auf Marken oder andere Eigentumsrechte oder Fälschen oder Entfernen der Angabe des Autors, rechtlicher Hinweise oder der Ursprünge oder Quellen anderer Materialien

Funktionen von Direct Print Plus

- Sie können PDF-Dokumente und Zeichnungen, JPEG- und TIFF-Bilder sowie HP-GL/2-Zeichnungen ohne Öffnen der entsprechenden Anwendungen drucken.
- Sie können eine Vorschau des Druckbilds anzeigen und vor Fehlern gewarnt werden, indem Sie Informationen vom angeschlossenen Drucker abrufen.
- Sie können Dateien ohne Anzeige des Direct Print Plus-Bildschirms drucken, indem Sie ein Direktaufdrucksymbol erstellen und eine Datei auf dem Symbol ablegen.
- Sie können mehrere Dateien gleichzeitig drucken, damit Sie effizient große Volumen von Zeichnungen und Bildern drucken können.
- Sie können häufig verwendete Druckeinstellungen speichern. Sie können auch mit gespeicherten Einstellungen drucken.
- Der Druckverlauf wird für einen bestimmten Zeitraum gespeichert. Außerdem können Sie Aufträge zum Drucken aus dem gespeicherten Druckverlauf auswählen.

»» Wichtig

- Die folgenden Dateiformate können in der Vorschau angesehen und gedruckt werden: JPEG, TIFF, PDF (außer kennwortgeschützte PDFs) und HP-GL/2.
- Bei einer HP-GL/2-Vorschau wird der Bereich, in dem die Daten vorhanden sind, mit Rahmen und diagonalen Linien dargestellt.

Starten von Direct Print Plus


Führen Sie die folgende Aktion zum Starten von Direct Print Plus aus. Der folgende Screenshot ist von Windows 11.

Wählen Sie in der Taskleiste  (Start-Taste) **Alle Apps (All apps) > Canon Utilities > Direct Print Plus** aus

Direct Print Plus wird gestartet.

Hinweis

- **Windows 10:**

Wählen Sie in der Taskleiste  (Start-Taste) **Canon Utilities > Direct Print Plus** aus.

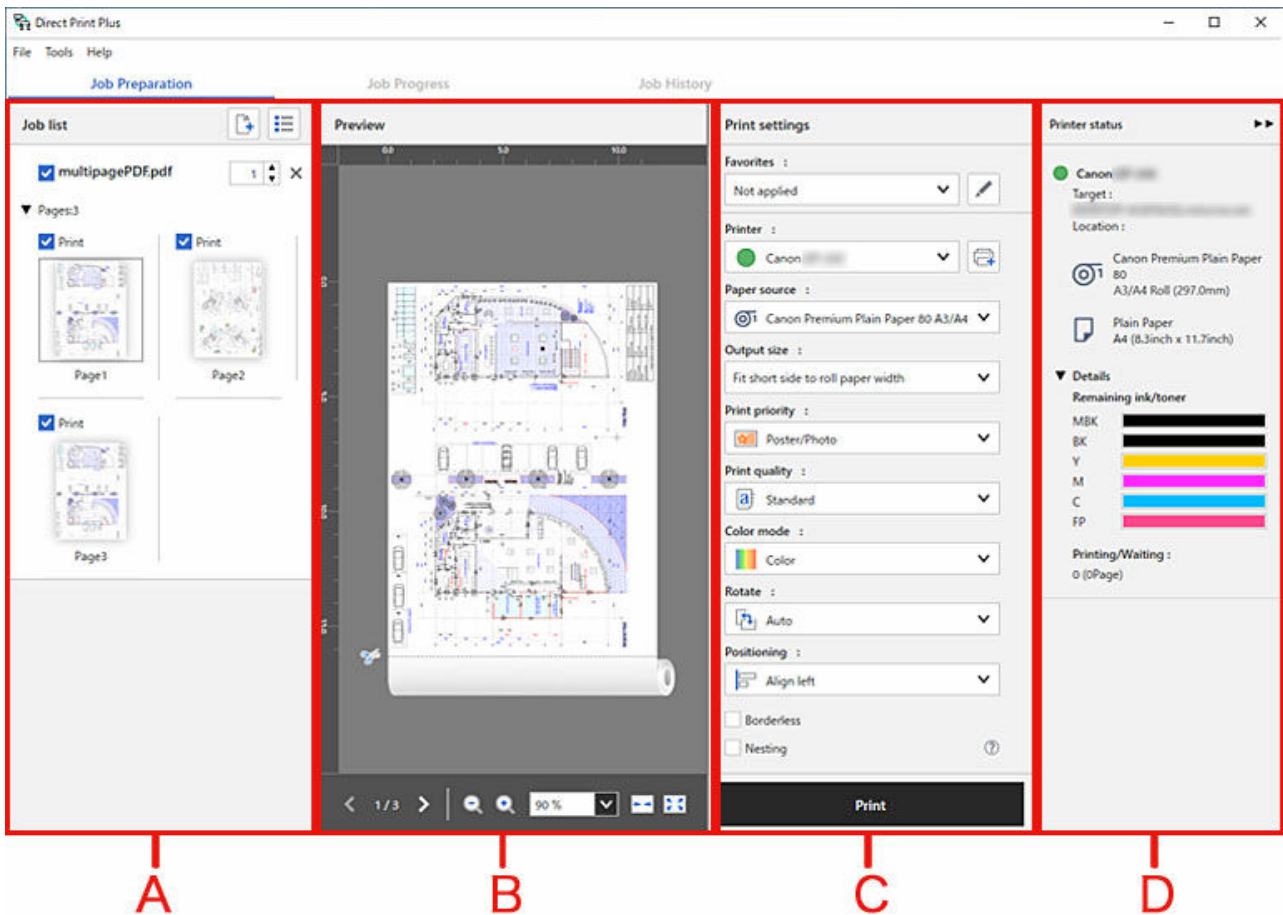
- **Windows 8.1:**

Wählen Sie im Startbildschirm **Direct Print Plus** aus.

Falls **Direct Print Plus** nicht im Startbildschirm angezeigt wird, wählen Sie den Charm **Suchen (Search)** und suchen Sie nach "**Direct Print Plus**".

Grundfunktionen (Startbildschirm)

Der Startbildschirm von Direct Print Plus kann gemäß des Ablaufs von links nach rechts bedient werden und ermöglicht Ihnen, zu drucken und gleichzeitig das Layout zu überprüfen. Sie können die Funktionen, die Sie für den Betrieb benötigen, auch über die Menüleiste auswählen.



A: Wenn Sie die Dateien, die Sie drucken möchten, per Drag & Drop in diesen Bereich ziehen, werden Miniaturansichten angezeigt.

B: Überprüfen Sie die Druckvorschau der ausgewählten Dateien.

C: Legen Sie den Medientyp und die Bildqualität fest.

D: Prüfen Sie den Druckerstatus.

Drucken von Dateien

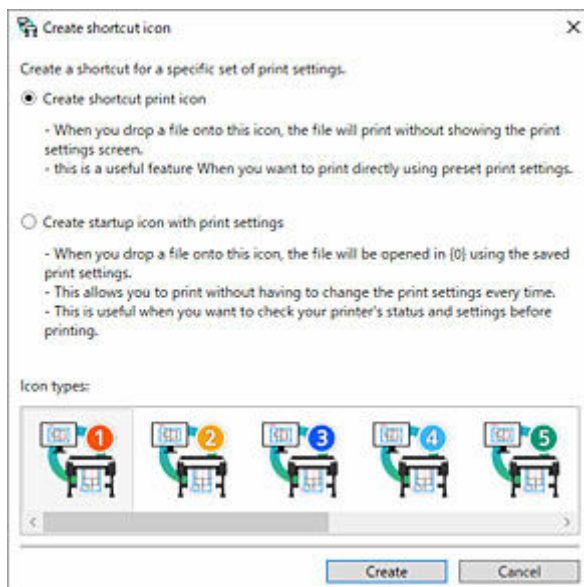
- **Erstellen von Direktaufdrucksymbolen**
- **Aufrufen von Favoriten und Drucken**
- **Drucken aus Druckverlauf**
- **Dateien im Cloud-Speicher drucken**
- **Überprüfung des Druckverlaufs**
- **Drucken in umgekehrter Reihenfolge**
- **Eingabe des PIN-Codes und Drucken**
- **Effiziente Ausrichtung auf Papier und Drucken (Schachtelung)**
- **Accounting einrichten**
- **Einschränkungen beim Drucken von PDF-Dateien**

Erstellen von Direktaufdruckssymbolen

Wenn Sie Druckdaten ablegen, können Sie Symbole zum Drucken erstellen.

Gehen Sie wie folgt vor, um Direktaufdruckssymbole zu erstellen.

1. Rufen Sie den Startbildschirm auf
2. Wählen Sie den gewünschten Drucker aus dem Pulldown-Menü **Drucker (Printer)** aus, um die Datei zu drucken
3. Konfigurieren Sie die erforderlichen Einstellungen im Bereich Druckeinstellungen
4. Wählen Sie die Option **Direktaufrufsymbol erstellen (Create shortcut icon)** über **Extras (Tools)** in der Menüleiste aus



Das Dialogfeld **Direktaufrufsymbol erstellen (Create shortcut icon)** wird geöffnet.

5. Wählen Sie den Symboltyp aus, den Sie erstellen möchten, und klicken Sie dann auf **Erstellen (Create)**

Das erstellte Symbol wird dem Ordner hinzugefügt, der im Dialogfeld **Speichern unter (Save as)** angegeben wurde.

Der Symbolname sieht zu Beginn wie folgt aus:

- "Anzeigename"_"Blatttyp"_"Druckqualität"

Bei einem HP-GL/2-Dateiformat steht bei "Blatttyp" "GL2" anstelle des Blatttyps.

»»» Wichtig

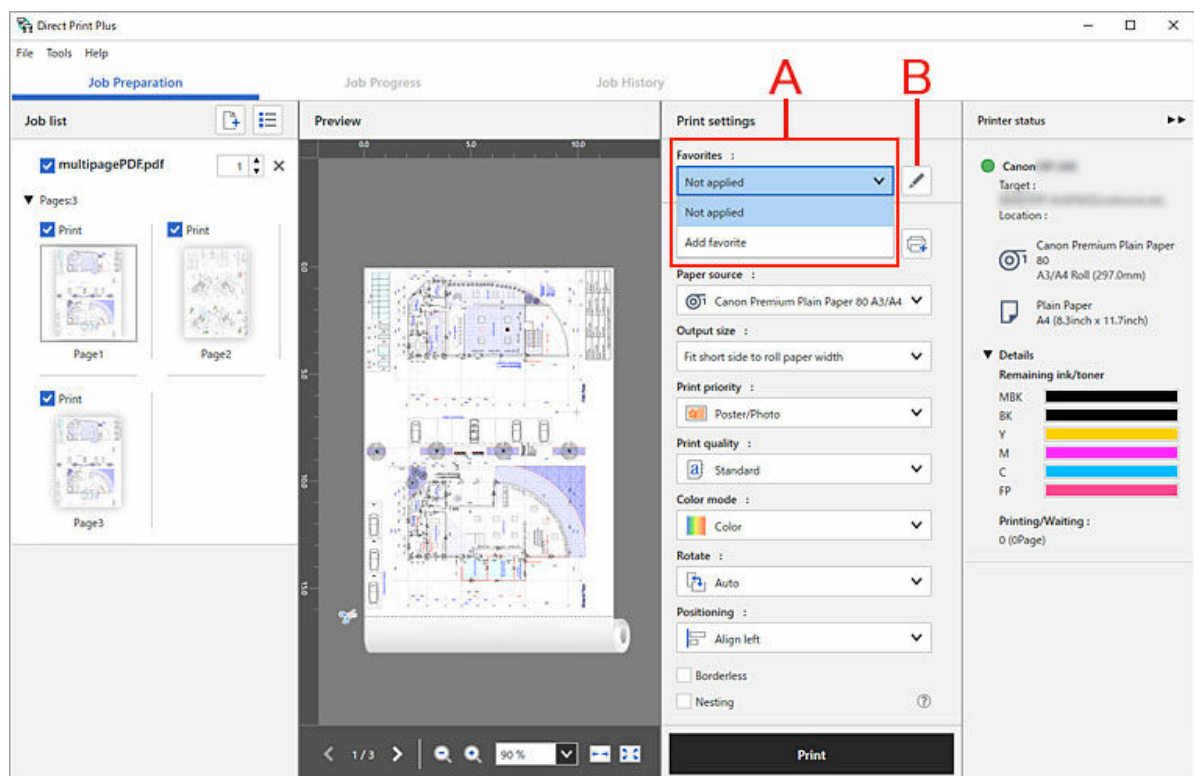
- Ändern Sie nicht den Anzeigenamen des für den Direktaufdruck verwendeten Druckers.

Aufrufen von Favoriten und Drucken

Sie können die aktuellen Einstellungen von Direct Print Plus speichern oder gespeicherte Einstellungen für die aktuellen Einstellungen replizieren.

Häufig verwendete Einstellungen in Favoriten speichern

1. Konfigurieren Sie die erforderlichen Einstellungen in **Druckeinstellungen (Print settings)** auf dem Startbildschirm
2. Wählen Sie im Bereich (A) die Option **Favorit hinzufügen (Add favorite)** aus



Das Dialogfeld **Fav. hinzuf./bearb. (Add/edit favorites)** wird angezeigt.

3. Geben Sie den Namen für die Einstellungen ein, die Sie speichern möchten in **Bevorzugter Name (Favorite name)** ein
4. Klicken auf **OK**

Die aktuellen Einstellungen werden unter dem angegebenen Namen gespeichert.

Bearbeiten Sie die **Favoriten (Favorites)** im Bereich (B).

»» Hinweis

- Die Einstellungselemente, die gespeichert werden können, sind: **Drucker (Printer) / Druckeinstellungen (Print settings) / Papiereinstellungen** .
- Bei Dateien im TIFF-/JPEG-/PDF-Format und HP-GL/2-Dateien unterscheiden sich die gespeicherten Elemente für häufig verwendete Einstellungen. Aus diesem Grund können Sie häufig verwendete

Einstellungen nicht replizieren, wenn Sie in einem Dateiformat drucken, das sich vom Dateiformat bei der Speicherung unterscheidet.

- Je nach verwendetem Drucker unterscheidet sich das Element im Vergleich zum Zeitpunkt der Speicherung, sodass der Einstellungsinhalt nicht repliziert werden kann.

Aufrufen von Favoriten und Drucken

- 1. Wählen Sie im Bereich (A) die Einstellungen aus, die Sie aufrufen möchten**

Die angegebenen Einstellungen werden auf dem Startbildschirm repliziert.

- 2. Klicken auf **Drucken (Print)****

Der Druckvorgang wird gestartet.

Drucken aus Druckverlauf

Sie können Ihren Druckverlauf durchsuchen und eine Datei mit den gleichen Einstellungen erneut drucken.

1. Auswählen von **Auftragsverlauf (Job History)**
2. Klicken Sie mit der rechten Maustaste auf das Verlaufelement, das Sie drucken möchten, und wählen Sie **Erneut drucken (Reprint)** aus dem Menü aus.

Der Druckvorgang wird mit den Einstellungen im Verlaufelement gestartet. Öffnen Sie per Rechtsklick die **Job-Eigenschaften (Job properties)**, um die Druckeinstellungen zu überprüfen, z. B. die Anzahl der Druckseiten usw.

»» Hinweis

- In dem Menü, das durch Rechtsklick angezeigt wird, können Sie Elemente zu den **Favoriten (Favorites)** hinzufügen und Elemente löschen. Wenn Sie **Zur Auftragsliste hinzufügen (Add to the job list)** auswählen, können Sie Elemente aus Ihrem Druckverlauf zur Auftragsliste hinzufügen.

Dateien im Cloud-Speicher drucken

Sie können Dateien drucken, die im Cloud-Speicher gespeichert sind.

1. Wählen Sie im Startbildschirm  aus

Wenn Sie sich beim Cloudservice anmelden, müssen Sie die Nutzungsbedingungen und Datenschutzbestimmungen jedes Dienstes bestätigen und diesen zustimmen.

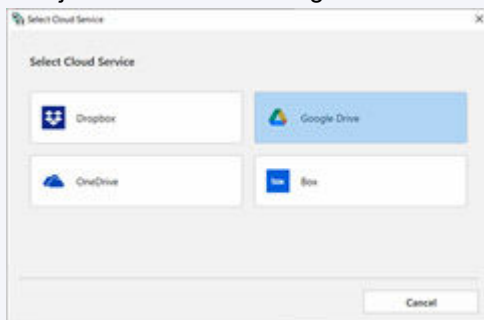
2. Wählen Sie den Cloudservice aus, den Sie verwenden möchten

Microsoft Edge startet.

Geben Sie Ihre Benutzer-ID und Ihr Kennwort ein und befolgen Sie die Anweisungen auf dem Bildschirm.

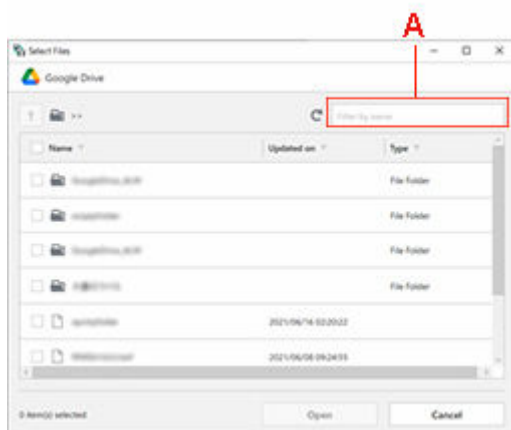
»» Hinweis

- Diese Bildschirmanzeige dient zu Beispielzwecken. Der angezeigte Webservice unterscheidet sich je nach Land oder Region.



3. Wählen Sie die Dateien aus, die Sie ausdrucken möchten

Wählen Sie den Ordner oder die Datei aus, die Sie ausdrucken möchten, und klicken Sie anschließend auf **Öffnen (Open)**, um sie der **Auftragsliste (Job list)** hinzuzufügen.



»» Hinweis

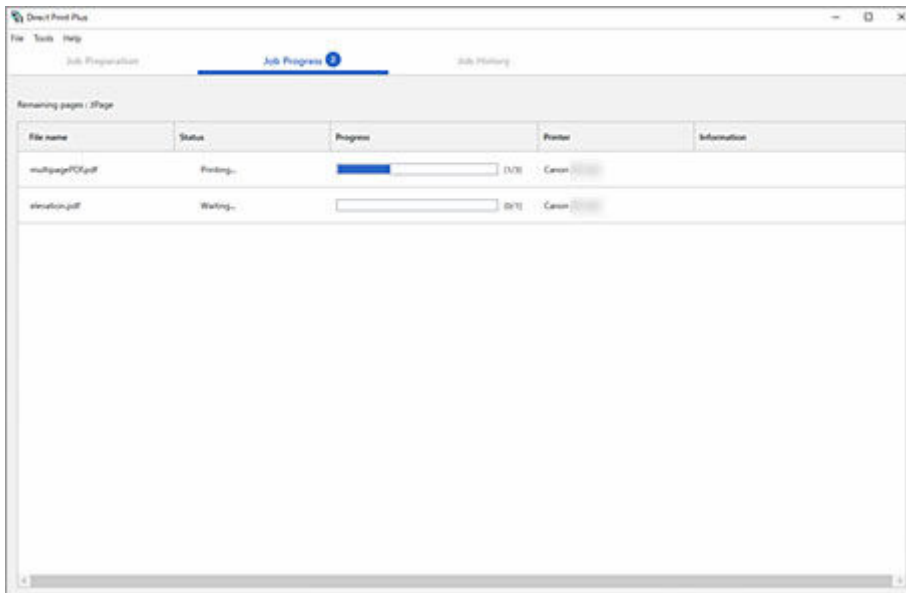
- Sie können Text eingeben, um nach Ordner- oder Dateinamen zu suchen. Wenn Sie im Abschnitt (A) Text eingeben, werden Ordner und Dateien angezeigt, die diesen Text enthalten.

Überprüfung des Druckverlaufs

Wenn Ihnen das Papier ausgeht oder andere Probleme auftreten, können Sie dies per Fernzugriff überprüfen.

1. Auswählen von **Auftragsfortschritt (Job Progress)**

Der Fortschritt wird für jeden Druckauftrag angezeigt.



Wenn Fehler oder Warnungen angezeigt werden, ergreifen Sie die gemäß den angezeigten Meldungen erforderlichen Maßnahmen.

»» Hinweis

- Sie können **Abbrechen (Cancel)** aus dem Menü wählen, das durch Rechtsklick angezeigt wird, um den Druckvorgang zu beenden.

Drucken in umgekehrter Reihenfolge

Wenn Sie die Papierausgabeposition mit der bedruckten Seite nach oben festlegen, wird die erste Seite ganz unten angeordnet und die Reihenfolge der Seiten wird umgekehrt. Wenn Sie die Option **Umgekehrte Reihenfolge (Reverse order)** auswählen, ist das Sortieren der Seiten nicht notwendig.

1. Wählen Sie die Option **Voreinstellungen (Preferences)** unter **Extras (Tools)** in der Menüleiste aus

Das Dialogfeld **Voreinstellungen (Preferences)** wird geöffnet.

2. Setzen Sie ein Häkchen bei **Umgekehrte Reihenfolge (Reverse order)**

3. Klicken auf **OK**

Eingabe des PIN-Codes und Drucken

Drucken Sie nach Eingabe des PIN-Codes auf dem Bedienfeld des Druckers. Dadurch können Verwechslungen von bedruckten Materialien vermieden werden.

1. Wählen Sie die Option **Voreinstellungen (Preferences)** unter **Extras (Tools)** in der Menüleiste aus

Das Dialogfeld **Voreinstellungen (Preferences)** wird geöffnet.

2. Setzen Sie ein Häkchen bei **PIN-Code zum Drucken eingeben (Enter PIN code to print)**

3. Klicken auf **OK**

4. Wählen Sie im Startbildschirm **Drucken (Print)** aus

Ein Bildschirm zur Eingabe des PIN-Codes wird angezeigt. Sie können bis zu 7 Ziffern festlegen.

5. Geben Sie den PIN-Code ein und wählen Sie dann **Fortsetzen (Continue)** aus

Der Druckvorgang wird nach Eingabe des konfigurierten PIN-Codes auf dem Bedienfeld des Druckers gestartet.

Effiziente Ausrichtung auf Papier und Drucken (Schachtelung)

Drucken Sie mehrere Tabellen und andere Daten, indem Sie sie effizient ausrichten.



1. Setzen Sie in den **Druckeinstellungen (Print settings)** auf dem Startbildschirm ein Häkchen bei **Schachtelung (Nesting)** (Siehe "[Grundfunktionen \(Startbildschirm\)](#)")
Die ausgewählten Dateien werden automatisch dem Layoutvorgang unterzogen.
2. Konfigurieren Sie die Einstellungen und starten Sie den Druckvorgang

»» Hinweis

- Die Schachtelung kann durchgeführt werden, wenn mehrere Seiten in einer einzigen Datei vorhanden sind.
- Um Einstellungen zwischen Dateien zu konfigurieren, geben Sie eine Zahl für den **Abstand zwischen Seiten bei Schachtelung (Spacing between pages when nesting)** in den **Voreinstellungen (Preferences)** ein.
- Wenn Sie bei der Schachtelung Seitenränder hinzufügen möchten, aktivieren Sie das Kontrollkästchen **Seitenrahmen bei Schachtelung aktivieren (Enable page frames when nesting)** in den **Voreinstellungen (Preferences)**.

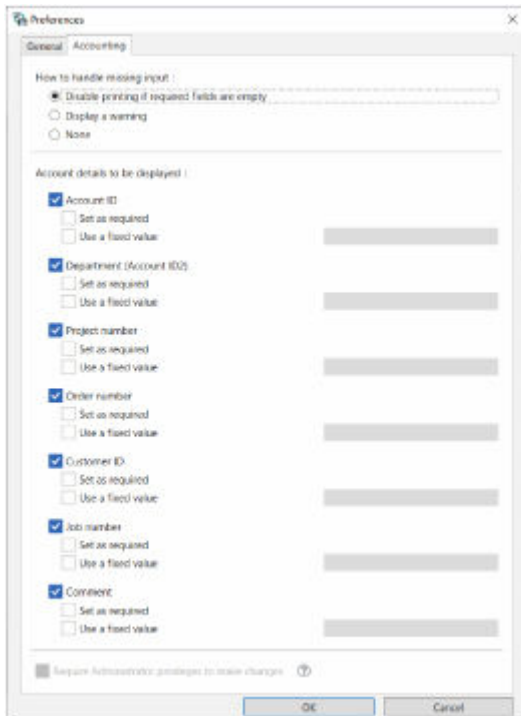
Accounting einrichten

Indem Sie Accounting für Druckaufträge einrichten, können Sie Druckaufträge für jedes Projekt oder jede Organisation verbinden und so einfacher verwalten.

1. Wählen Sie in der Menüleiste **Voreinstellungen (Preferences)** aus

2. Wählen Sie die Registerkarte **Accounting** aus

Es wird der Accounting-Einrichtungsbildschirm angezeigt.



3. Richten Sie **Bei fehlenden Eingaben (How to handle missing input)** ein

Wenn Sie das Kontrollkästchen **[Erforderlich] ([Required])** unter **Als erforderlich festlegen (Set as required)** am Ende aktiviert haben, wird die Einstellung Direct Print Plus dort eingerichtet, wo in den Druckeinstellungen des Startbildschirms nichts ausgewählt wurde.

- **Drucken bei leeren Pflichtfeldern deaktivieren (Disable printing if required fields are empty)**
Der Druckvorgang wird nicht fortgesetzt.
- **Warnung anzeigen (Display a warning)**
Es werden Warnmeldungen angezeigt.
- **Keines (None)**
Drucken, auch wenn einige Felder nicht ausgefüllt sind.

4. Stellen Sie für jedes Element **Anzuzeigende Kontodetails (Account details to be displayed)** ein

»» Hinweis

- Wenn Sie ein Kontrollkästchen für **Administratorrechte für Änderungen verlangen (Require Administrator privileges to make changes)** setzen, können Benutzer ohne Administratorrechte die Kontoeinstellungen nicht ändern. So können Einstellungen einfacher zentral verwaltet werden. Starten Sie Direct Print Plus indem Sie **Als Administrator ausführen (Run as Administrator)** auswählen, um diese Funktion zu aktivieren.
- Wenn Sie einen Wert eingeben, während **Festen Wert verwenden (Use a fixed value)** ausgewählt ist, wird dieser Wert beim Drucken eingestellt und kann am Bildschirm der Druckeinstellungen nicht geändert werden. Wurde der Wert im Druckertreiber festgelegt, wird dieser priorisiert.

Archivordner einrichten

Diese Funktion überwacht spezielle Ordner in Windows (sog. Archivordner oder Hot Folders) auf lokalen Computern und im Netzwerk. Wenn Bilddaten oder Dokumente hinzugefügt werden, beginnt **Direct Print Plus** mit dem Druck. Wenn Sie einen Ordner auf einem Netzwerk-Computer zum Archivordner erklären, können Sie auch auf Computern ohne **Direct Print Plus** drucken, indem Sie einfach Dateien zu diesem Ordner hinzufügen. Diese Anleitung beschreibt, wie Archivordner hinzugefügt und verwaltet werden.

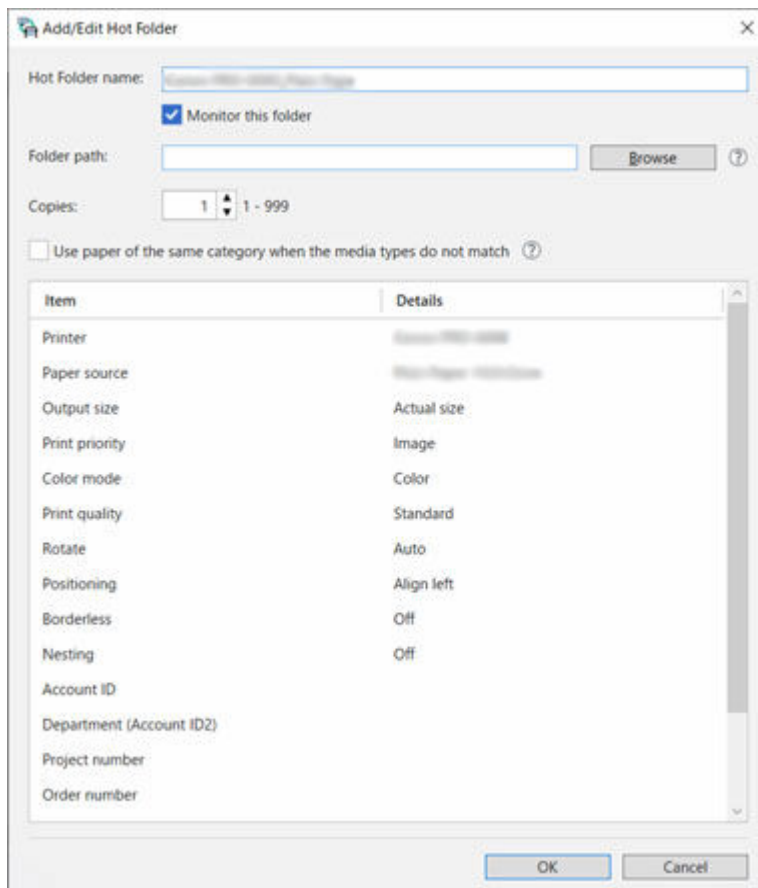
Archivordner hinzufügen/bearbeiten

So können Sie Archivordner hinzufügen oder bearbeiten.

1. Rufen Sie den Startbildschirm auf
2. Wählen Sie den gewünschten Drucker aus dem Pulldown-Menü **Drucker (Printer)** aus, um die Datei zu drucken
3. Konfigurieren Sie die erforderlichen Einstellungen im Bereich Druckeinstellungen
4. Wählen Sie die Option **Archivordner hinzufügen/bearbeiten (Add/Edit Hot Folder)** über **Extras (Tools)** in der Menüleiste aus.

Das Dialogfeld **Archivordner hinzufügen/bearbeiten (Add/Edit Hot Folder)** wird geöffnet. Nehmen Sie die entsprechenden Einstellungen vor.

Der ausgewählte Ordner wird jetzt zu einem Archivordner.



Archivordner verwalten

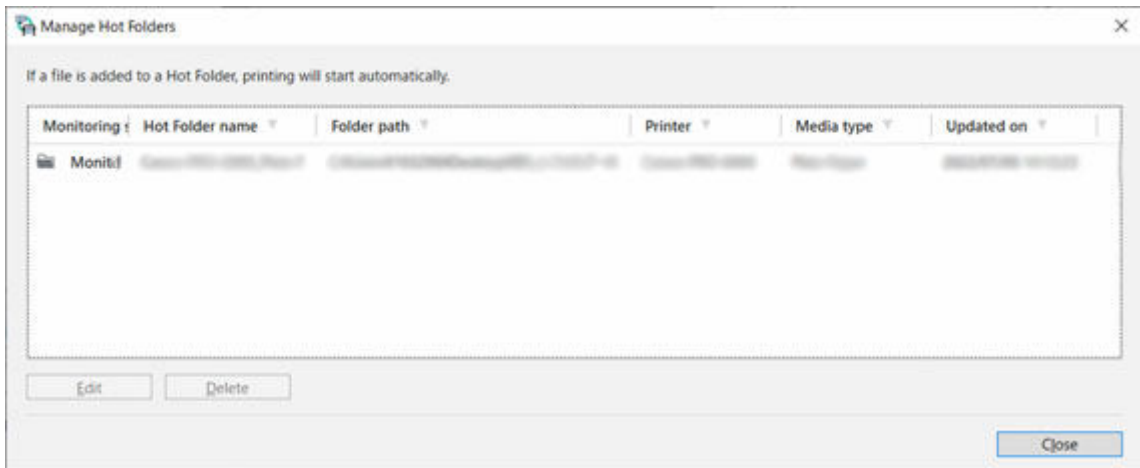
So können Sie Ihre Archivordner verwalten.

1. Wählen Sie die Option **Archivordner verwalten (Manage Hot Folders)** über **Extras (Tools)** in der Menüleiste aus.

Das Dialogfeld **Archivordner verwalten (Manage Hot Folders)** wird geöffnet.

Sobald eine Datei zu einem Ordner hinzugefügt wird, bei dem der **Überwachungsstatus (Monitoring status)** auf **Überwachung (Monitoring)** gestellt ist, wird die Datei automatisch ausgedruckt. Ist der Ordner hingegen auf **Pause (Paused)** eingestellt, wird die Datei nicht gedruckt.

Um die Ordnerinformationen zu ändern, öffnen Sie das Menü mit einem Klick und wählen Sie **_Bearbeiten (_Edit)** aus. Sie können hier ebenfalls den Überwachungsstatus ändern.



Einschränkungen beim Drucken von PDF-Dateien

Diese Beschränkungen gelten bei der Verwendung von Direct Print Plus zum Drucken von PDF-Dateien, die die nachfolgende Bildverarbeitung enthalten.

Bei der Verwendung von Direct Print Plus zum Drucken von PDF-Dateien, die mit Adobe Illustrator oder anderen Anwendungen für grafische Zwecke erstellt wurden, ist Vorsicht geboten.

- **Transparenzverarbeitung**

In manchen Fällen wird die Transparenz möglicherweise nicht wie beabsichtigt verarbeitet.

- **Schatten**

In manchen Fällen werden die Schatteneffekte (auf Text, Formen usw. angewendete Schatteneffekte), die auf Objekte angewendet werden, welche in Rechtecken mit Transparenzverarbeitung platziert sind, möglicherweise nicht ordnungsgemäß verarbeitet.

- **Überdrucken**

Die überlagernden Teile von Bildern werden nicht wie beabsichtigt gedruckt.

- **PDF mit Sicherheitseinstellungen**

Kann nicht gedruckt werden.

- **16-Bit-Daten oder JPEG 2000-Bilddaten mit Transparenzeinstellungen**

Bilder können nicht gedruckt werden.

- **PostScript-Daten**

Bilder können nicht gedruckt werden.

- **Halbtöne**

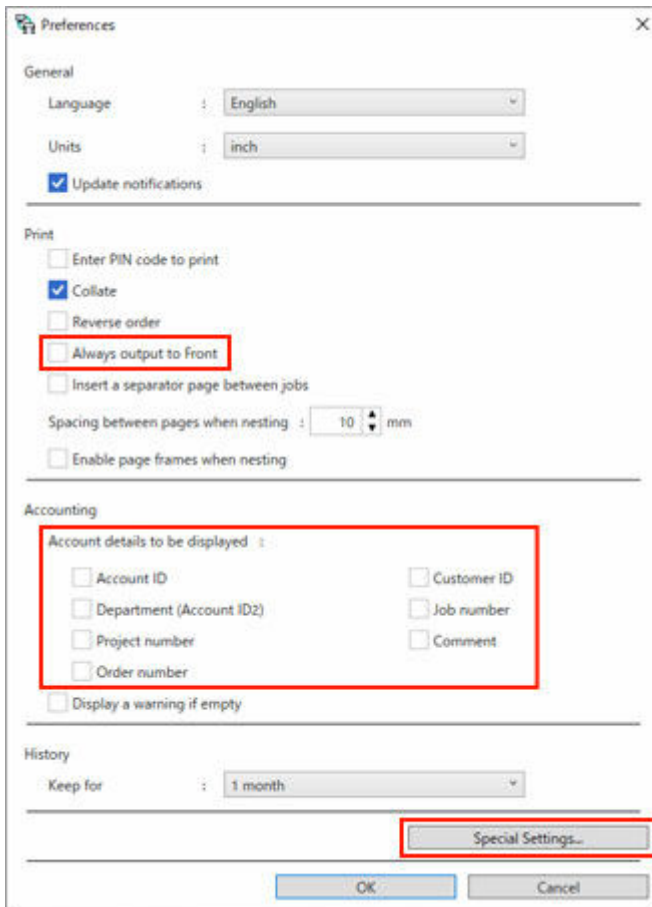
Kann nicht gedruckt werden.

- **Daten mit hinzugefügten Kommentaren**

Bilder können nicht gedruckt werden, wenn es keine Daten zum Anzeigen von Kommentaren gibt.

Andere (Einstellungen)

Hier werden nützliche Funktionen erläutert.



Immer nach vorne ausgeben (Always output to Front)

Wenn Sie dieses Element aktivieren, können Canon-Drucker mit mehreren Papierausgabepositionen so eingestellt werden, dass die Ausgabe immer vorne am Drucker erfolgt.

Sondereinstellungen (Special Settings)

Wenn Sie die Option **MediaBox-Bereich als PDF-Seitengröße verwenden (Use MediaBox area as PDF page size)** auf **Ein (On)** setzen, werden PDF-Dateien mit den zugeschnittenen Bereichen gedruckt.

Fehlersuche

Falsche Reihenfolge beim Drucken von Direktaufdrucken

Betriebssystemspezifikationen können dazu führen, dass Ihre Dateien nicht in der ausgewählten Reihenfolge ausgedruckt werden.

Wenn Sie Dateien in einer bestimmten Reihenfolge ausdrucken möchten, legen Sie die Dateien nacheinander ab und drucken Sie sie.

Ich möchte auch nach dem Kauf eines neuen Druckers das Direktaufdrucksymbol weiter verwenden

Falls es sich bei dem neu gekauften Drucker um dasselbe Modell handelt, können Sie das Direktaufdrucksymbol weiterhin verwenden, solange Sie den verwendeten Anzeigenamen nicht ändern.

Ich möchte die Ergebnisse von Direktaufdrucken prüfen

Die Direktaufdruckergebnisse werden in Berichtsdateien exportiert.

Berichtsdateien werden unter "\Canon\imagePROGRAF Direct Print Plus\Shortcut Print\Reports" in **Dokumente (Documents)** oder **Eigene Dokumente (My Documents)** erstellt.

Der Name der Berichtsdatei lautet "{Datum und Uhrzeit der Berichtsausgabe (yyyymmddhhmmss)}-{Millisekunden}_{Dateiname des Druckdokuments.Erweiterung}.log".

Der obere, untere, linke und rechte Rand der Bilder wird nicht gedruckt

Im Startbildschirm ist die **Ausgabeformat (Output size)** auf **Tatsächliche Größe (Actual size)**, **Halbe Größe (Half size)**, oder **25% – 250%** eingestellt. Ändern Sie sie in eine andere Einstellung.