



LEGRIA HFR56 LEGRIA HFR57 LEGRIA HFR506

Package Contents

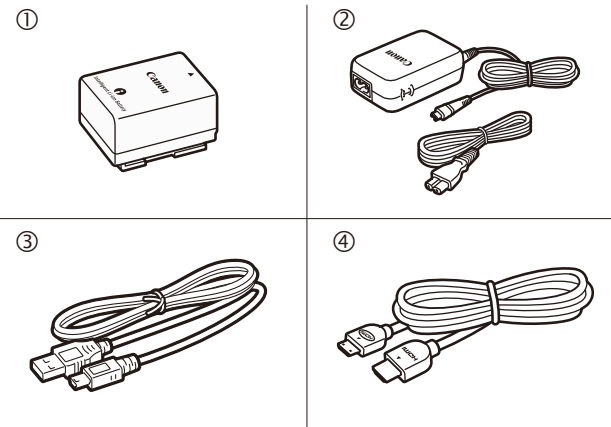
- HD Camcorder
LEGRIA HF R56 / LEGRIA HF R57 / LEGRIA HF R506
- BP-718 Battery Pack [①]
- CA-110E Compact Power Adapter
(including power cord) [②]
- IFC-300PCU/S USB Cable [③]
- HTC-100/S High Speed HDMI Cable [④]
- Transfer Utility LE Startup Guide

1 Installing the Camcorder's Instruction Manual (PDF File)

This guide only introduces the most basic functions of the camcorder to get you started. To learn more about your camcorder, to read important handling precautions and to consult the troubleshooting section if an error message is displayed, be sure to read the full-version Instruction Manual (PDF file*). Access the following Web site. Click on your country/region and follow the onscreen instructions to download the PDF file.

* Adobe® Reader® 6 or later is required to view the PDF file.

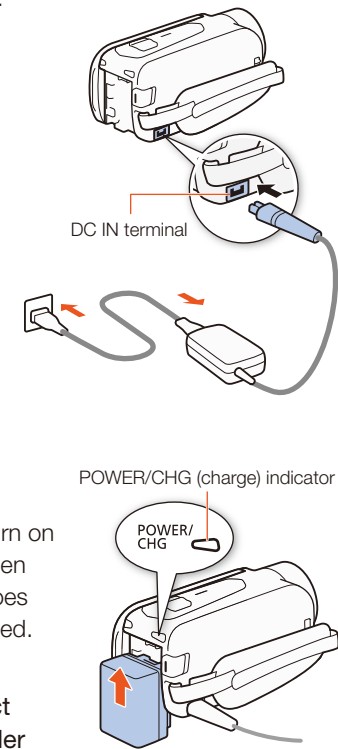
<http://www.canon.com/icpd/>



2 Charging the Battery Pack

Charge the supplied battery pack in advance. Fully charging the supplied battery pack will take about 5 hours 35 minutes.

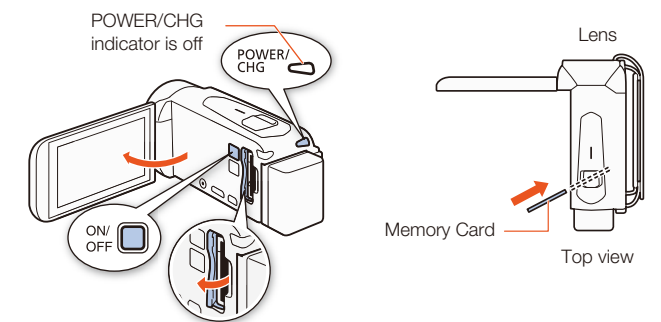
1. Plug the compact power adapter into a power outlet and connect it to the camcorder's DC IN terminal.
 - Connect the power cord to the compact power adapter before plugging the power cord into the power outlet.
2. Attach the battery pack to the camcorder.
 - Press the battery pack softly into the battery attachment unit and slide it up until it clicks in place.
3. Charging will start when the camcorder is turned off.
 - The POWER/CHG indicator will turn on in red (battery pack charging). When the red POWER/CHG indicator goes out, the battery pack is fully charged.
4. When the battery pack is fully charged, disconnect the compact power adapter from the camcorder and then from the power outlet.



3 Inserting a Memory Card

You can use commercially available SD, SDHC and SDXC cards with this camcorder. We recommend using memory cards rated SD Speed Class 4, 6 or 10. Initialize a memory card before using it with the camcorder for the first time (PDF) [Initializing the Memory](#).

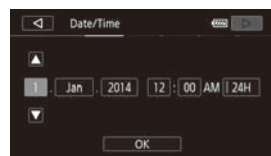
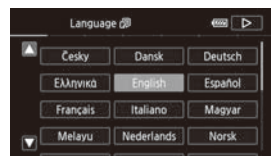
1. Open the LCD panel.
 - The camcorder will turn on and the first screen of the initial setup will appear.
2. Press **[ON/OFF]** to turn off the camcorder.
 - Make sure the POWER/CHG indicator is off.
3. Open the memory card slot cover and insert the memory card.
 - Insert the memory card at a slight angle, with the label facing toward the lens.
4. Close the memory card slot cover.



4 Basic Setup

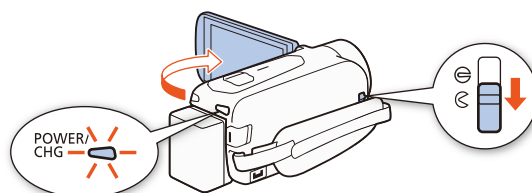
The first time you turn on the camcorder, you will be guided by the camcorder's basic setup screens to select the camcorder's initial settings, such as the language, date and time, movie format, etc.

1. Turn on the camcorder.
 - Open the LCD panel or press **[ON/OFF]**.
2. Touch the desired language for onscreen displays and then touch **[>]**.
3. Touch the desired date/time format and then touch **[>]**.
4. Set the date and time.
 - Touch a field you want to change and touch **[▲]** or **[▼]** to change. Repeat as necessary.
 - Touch **[24H]** to use 24-hour clock or leave untouched to use AM/PM.
- 5 Touch **[OK]** and then touch **[>]**.
- 6 Touch **[AVCHD]** or **[MP4]** to select the movie format and then touch **[>]**.
 - **HFR56/R57** After you select the movie format, you need to select the memory to be used for recording movies (step 7) and photos (step 8).
 - **HFR506** No further settings are necessary. Skip to step 9.
- 7 Touch **[]** (built-in memory) or **[SD]** (memory card) and then touch **[>]**.
- 8 Touch **[]** (built-in memory) or **[SD]** (memory card) and then touch **[>]**.
9. Touch **[OK]** to complete the basic setup and close the setup screen.

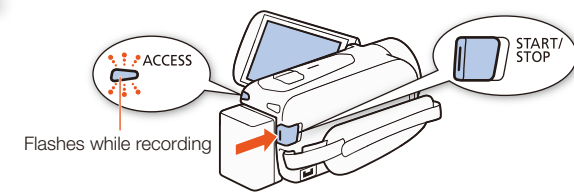


5 Shooting Video and Taking Photos

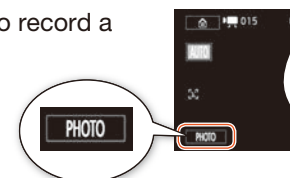
1. Turn on the camcorder and open the lens cover.
 - Open the LCD panel or press **[ON/OFF]** and then slide down the lens cover switch.



2. Video: Press **[START/STOP]** to start recording video. Press again to stop recording.



Photos: Touch **[PHOTO]** to record a photo.



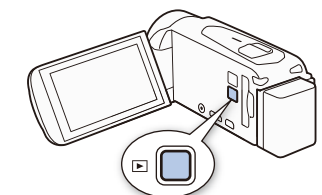
3. When you finish recording, close the lens cover and turn off the camcorder.

6 Playing Back Video and Viewing Photos

1. Press the **[▶]** button.
 - The **[*]** index screen will open. To play back different content, change the index screen.
 - []** ▶ **[]** Photo Playback for the **[]** (photos) index screen.
 - []** ▶ **[]** Baby Album for the **[]** index screen (only scenes recorded in Baby mode).
 - []** ▶ **[]** Video Snapshot for the **[]** index screen (only AVCHD video snapshot scenes).



Index screen button



2. Touch the thumbnail of the scene or photo you want to play back.
 - During playback, touch the screen to display the playback controls.

To change the memory* or video format From the index screen:

1. Touch the index screen button (next to the **[]** (Home) button).
2. Select the memory* (**[]** or **[SD]**) and/or movie format (**[AVCHD]** or **[MP4]**) of the recordings you wish to play back and then touch **[OK]**.

* **HFR56/R57** only.

To delete recordings From the index screen:

1. Touch **[Edit]** ▶ **[Delete]**.
2. Select whether to delete all the scenes/photos in the same folder, selected scenes/photos, or all scenes/photos.
 - To select individual recordings: touch all the scenes/photos you wish to delete to mark them with a **[]**, then touch **[OK]**.
3. Touch **[Yes]** ▶ **[OK]**.

HF R56/R57 Wi-Fi Functions

The camcorder features a number of convenient Wi-Fi functions that will allow you to use it in combination with Wi-Fi enabled smartphones and tablets. For example, you can use a smartphone or tablet to control the camcorder remotely while recording, or to upload recordings to the Web.



1. If necessary, install the required app on the smartphone or tablet.
2. Select the desired Wi-Fi function on the camcorder.
3. Wirelessly connect the device to the camcorder.

Note: The necessary procedure may differ according to the Wi-Fi function you wish to use. For details, be sure to refer to the PDF Instruction Manual ([PDF](#) [Wi-Fi Functions](#)).

Optional Accessories

Canon offers a wide range of optional accessories for your camcorder. For details, be sure to refer to the PDF Instruction Manual ([PDF](#) [Optional Accessories](#)).

Use of genuine Canon accessories is recommended.

This product is designed to achieve excellent performance when used with genuine Canon accessories. Canon shall not be liable for any damage to this product and/or accidents such as fire, etc., caused by the malfunction of non-genuine Canon accessories (e.g., a leakage and/or explosion of a battery pack). Please note that this warranty does not apply to repairs arising out of the malfunction of non-genuine Canon accessories, although you may request such repairs on a chargeable basis.

This mark identifies genuine Canon video accessories. When you use Canon video equipment, we recommend Canon-brand accessories or products bearing the same mark.

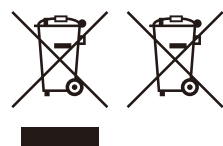


Important Usage Instructions

COPYRIGHT WARNING:

Unauthorized recording of copyrighted materials may infringe on the rights of copyright owners and be contrary to copyright laws.

Only for European Union and EEA (Norway, Iceland and Liechtenstein)



These symbols indicate that this product is not to be disposed of with your household waste, according to the WEEE Directive (2012/19/EU), the Battery Directive (2006/66/EC) and/or national legislation implementing those Directives.

If a chemical symbol is printed beneath the symbol shown above, in accordance with the Battery Directive, this indicates that a heavy metal (Hg = Mercury, Cd = Cadmium, Pb = Lead) is present in this battery or accumulator at a concentration above an applicable threshold specified in the Battery Directive.

This product should be handed over to a designated collection point, e.g., on an authorized one-for-one basis when you buy a new similar product or to an authorized collection site for recycling waste electrical and electronic equipment (EEE) and batteries and accumulators. Improper handling of this type of waste could have a possible impact on the environment and human health due to potentially hazardous substances that are generally associated with EEE. Your cooperation in the correct disposal of this product will contribute to the effective usage of natural resources.

For more information about the recycling of this product, please contact your local city office, waste authority, approved scheme or your household waste disposal service or visit www.canon-europe.com/weee, or www.canon-europe.com/battery.

Complies with
IDA Standards
DB007671

This product is installed with the WLAN Module which is certified to standards set by IDA Singapore.

Precautions About the Battery Pack

DANGER!

Treat the battery pack with care.

- Keep it away from fire (or it might explode).
- Do not expose the battery pack to temperature higher than 60 °C. Do not leave it near a heater or inside a car in hot weather.
- Do not try to disassemble or modify it.
- Do not drop it or subject it to shocks.
- Do not get it wet.

Important Note About the Memory Card

- Observe the following precautions while the ACCESS indicator is on or flashing. Failing to do so may result in permanent data loss or damage to the memory card.
 - Do not open the memory card slot cover.
 - Do not disconnect the camcorder's power source or turn off the camcorder.
 - Do not change the camcorder's operating mode.

IMPORTANT SAFETY INSTRUCTIONS

To reduce the risk of electric shock, do not expose this product to dripping or splashing.

The Mains plug is used as the disconnect device. The Mains plug shall remain readily operable to disconnect the plug in case of an accident.

While using the compact power adapter, do not wrap it or cover it with a piece of cloth, and do not place it in confined narrow spaces.

CA-110E identification plate is located on the bottom.

REGIONS OF USE

The LEGRIA HF R56 and HF R57 are in compliance (as of November 2013) with the radio signal regulations of the regions listed below. For details on other regions where it can be used, make inquiries with the contacts listed inside the blue frame at the bottom of this page.

REGIONS

Australia, Austria, Belgium, Bulgaria, Cyprus, Czech Republic, Denmark, Estonia, Finland, France, Germany, Greece, Hong Kong S.A.R., Hungary, Iceland, Ireland, Italy, Latvia, Liechtenstein, Lithuania, Luxembourg, Malta, Netherlands, New Zealand, Norway, Poland, Portugal, Romania, Russia, Singapore, Slovakia, Slovenia, Spain, Sweden, Switzerland, United Kingdom

Statement on EC directive



Hereby, Canon Inc., declares that this WM217 is in compliance with the essential requirements and other relevant provisions of Directive 1999/5/EC.

Please contact the following address for the original Declaration of Conformity:
CANON EUROPA N.V.
Bovenkerkerweg 59, 1185 XB Amstelveen, The Netherlands
CANON INC.
30-2, Shimomaruko 3-chome, Ohta-ku, Tokyo 146-8501, Japan

Model

ID0020: LEGRIA HF R56 / LEGRIA HF R57

Trademark Acknowledgements

- SD, SDHC and SDXC Logos are trademarks of SD-3C, LLC.
- HDMI, the HDMI logo and High-Definition Multimedia Interface are trademarks or registered trademarks of HDMI Licensing LLC in the United States and other countries.
- Manufactured under license from Dolby Laboratories. "Dolby" and the double-D symbol are trademarks of Dolby Laboratories.



- Wi-Fi is a registered trademark of the Wi-Fi Alliance.
- Wi-Fi Certified, WPA, WPA2, and the Wi-Fi Certified logo are trademarks of the Wi-Fi Alliance.
- Other names and products not mentioned above may be trademarks or registered trademarks of their respective companies.
- This device incorporates exFAT technology licensed from Microsoft.
- "Full HD 1080" refers to Canon camcorders compliant with high-definition video composed of 1,080 vertical pixels (scanning lines).
- This product is licensed under AT&T patents for the MPEG-4 standard and may be used for encoding MPEG-4 compliant video and/or decoding MPEG-4 compliant video that was encoded only (1) for a personal and non-commercial purpose or (2) by a video provider licensed under the AT&T patents to provide MPEG-4 compliant video. No license is granted or implied for any other use for MPEG-4 standard.



Canon Inc. 30-2, Shimomaruko 3-chome, Ohta-ku, Tokyo 146-8501, Japan

Canon Europa N.V.

Bovenkerkerweg 59, 1185 XB Amstelveen, The Netherlands
www.canon-europe.com

Canon UK Ltd

CCI Service Centre, Unit 130
Centennial Park, Borehamwood, Hertfordshire, WD6 3SE, United Kingdom
Telephone 0844-369-0100

Canon Australia Pty Ltd

Tel: 13-13-83 (within Australia only)
(61) 02-9805-2555
www.canon.com.au

Canon New Zealand Ltd

Tel: 0800-222-666 (within New Zealand only)
(64) 09-489-0300
www.canon.co.nz

Canon Singapore Pte. Ltd

1 HarbourFront Avenue, #04-01 Keppel Bay Tower, Singapore 098632
Tel: (65) 6799 8888
Fax: (65) 6799 8882

Canon Hongkong Company Ltd

19/F, The Metropolis Tower, 10 Metropolis Drive,
Hung Hom, Kowloon, Hong Kong
Tel: +852 3191 2333, Fax: +852 2428 3963

Canon Latin America, Inc.

Sales & Enquiries:
One Canon Park, Melville, NY 11747 USA