

Canon

PIXMA TS5100 series

Getting Started

入門指南

입문 가이드

คำแนะนำเริ่มต้น

Mari Memulai

Hướng dẫn bắt đầu

Read **Safety and Important Information** (addendum) first.

請首先閱讀「**安全與重要資訊**」(附錄)。

먼저 **안전 및 중요 정보**(부록)를 읽으십시오.

โปรดอ่าน **ข้อมูลความปลอดภัยและสำคัญ** (ในภาคผนวก) ก่อน

Baca **Keamanan dan Informasi Penting** (lampiran) terlebih dahulu.

Trước tiên đọc **Thông tin an toàn và quan trọng** (phụ lục).



QT62052V01

1



Installing the Printer..... page 1
 安裝印表機..... 第1頁
 프린터 설치하기 1페이지
 การติดตั้งเครื่องพิมพ์..... หน้า 1
 Memasang Pencetak..... halaman 1
 Lắp đặt Máy in trang 1

2



Connecting with Computer and Smartphone/Tablet..... page 4
 與電腦和智慧型手機/平板連接..... 第4頁
 컴퓨터 및 스마트폰/태블릿과 연결하기 4페이지
 การเชื่อมต่อกับคอมพิวเตอร์และสมาร์ทโฟน/แท็บเล็ต หน้า 4
 Menghubungkan dengan Komputer dan Ponsel Pintar/Tablet halaman 4
 Kết nối với máy tính và smartphone/máy tính bảng trang 4

How to Hold Printer

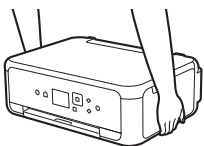
如何握持印表機

프린터를 드는 방법

วิธีการยกเครื่องพิมพ์

Cara Memegang Pencetak

Cách giữ Máy in



Explanatory Movies

說明性短片

설명 동영상

ภาพยนตร์การอธิบาย

Video Penjelasan

Đoạn phim giải thích




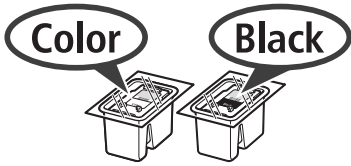

<http://ij.start.canon>



3.XXXXXXXXXXXXXXX



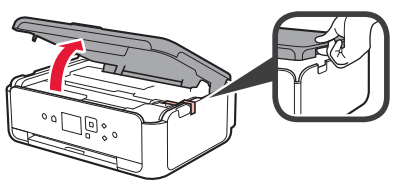
1. Checking Included Items

-  □ Power cord
-  □ FINE cartridge
-  □ Setup CD-ROM for Windows PC
- Safety and Important Information
- Getting Started (this manual)

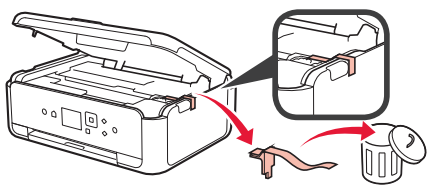
2. Removing Packing Materials / Turning on Printer



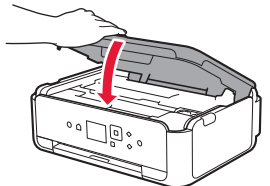
- 1 Remove the packing materials (such as orange tape and protective film on the LCD) from outside the printer.
- 2 Hook the hollows on the both sides of the printer with your fingers and open the scanning unit / cover.



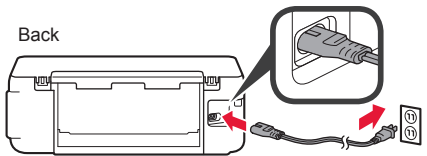
- 3 Remove the orange tape and the protective material and discard them.



- 4 Close the scanning unit / cover.

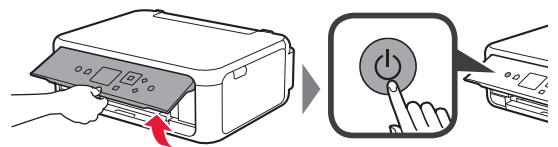


- 5 Connect the power cord diagonally from the back.

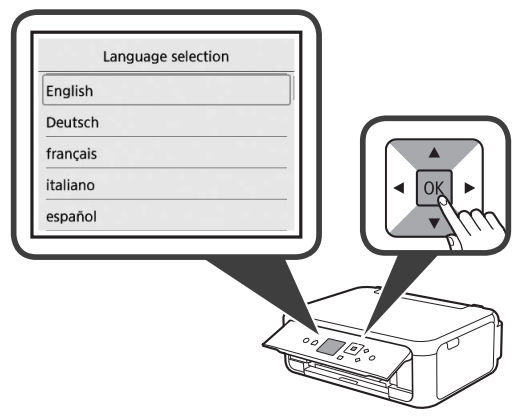


Do not connect any cables except the power cord yet.

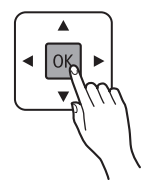
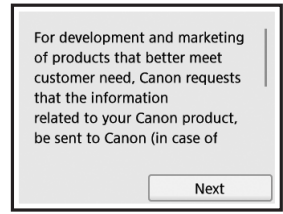
- 6 Lift the operation panel and press the **ON** button.



- 7 Use the ▲ or ▼ button to select a language, and then press the **OK** button.

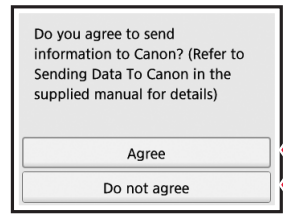


- 8 Press the **OK** button.

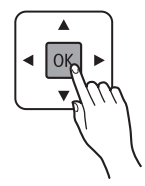
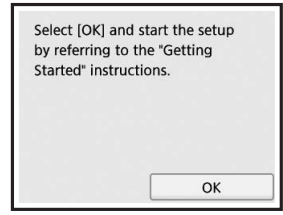


For details about information that is sent to Canon, refer to "Sending Data To Canon" in **Safety and Important Information**.

- 9 Use the ▲ or ▼ button to select **Agree** or **Do not agree**, and then press the **OK** button.



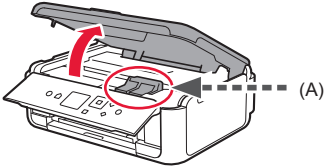
- 10 Read the messages and press the **OK** button.



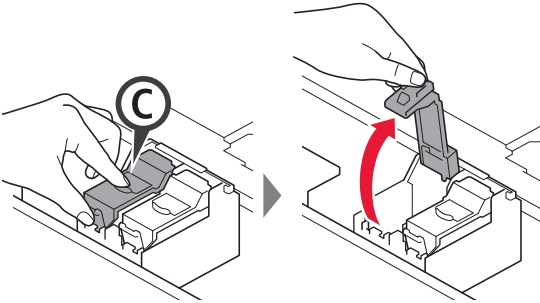
3. Installing FINE Cartridge



- 1 Open the scanning unit / cover.
⊘ Do not touch the FINE cartridge holder (A) until it stops.

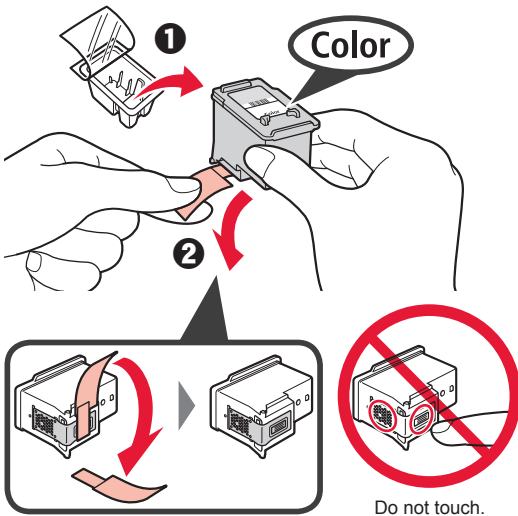


- 2 Pinch and open the ink cartridge locking cover on the left side ©.



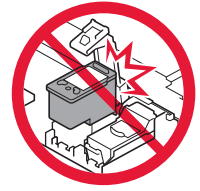
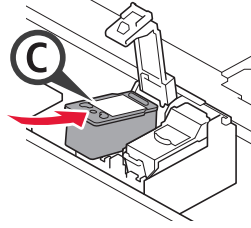
Install the Color FINE cartridge © on the left side and the Black FINE cartridge (B) on the right side.

- 3
 - 1 Take out the Color FINE cartridge from the package.
 - 2 Remove the protective tape.



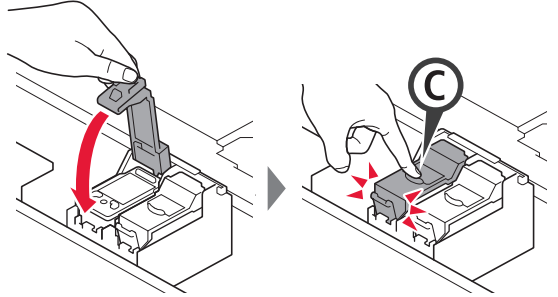
Be careful of ink on the protective tape.

- 4 Set the Color FINE cartridge on the FINE cartridge holder on the left side ©.

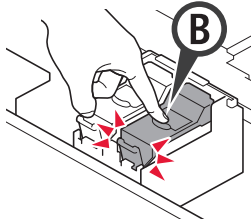


Do not bump it against the surrounding parts.

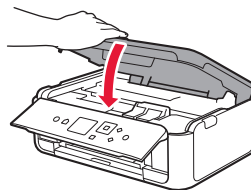
- 5 Push down © in the ink cartridge locking cover firmly until it snaps into place to close it completely.



- 6 Repeat steps 2 to 5 and install the Black FINE cartridge as well, on the right.



- 7 Close the scanning unit / cover.

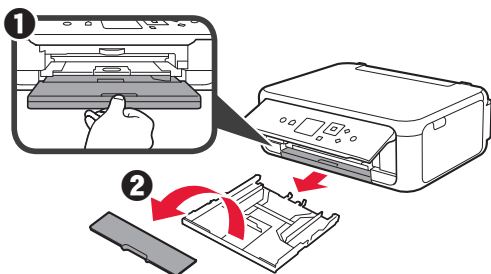


If an error message appears on the screen, make sure the FINE Cartridges are installed correctly.

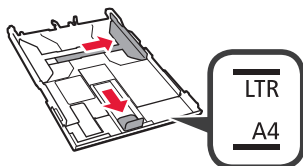
4. Loading Paper



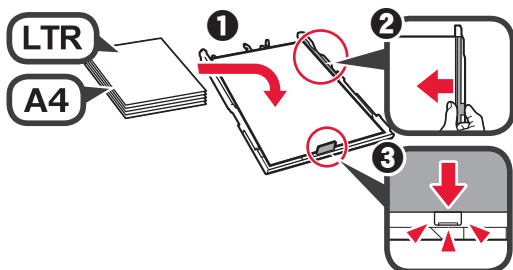
- 1 **1** Pull out the cassette.
2 Remove the cassette cover.



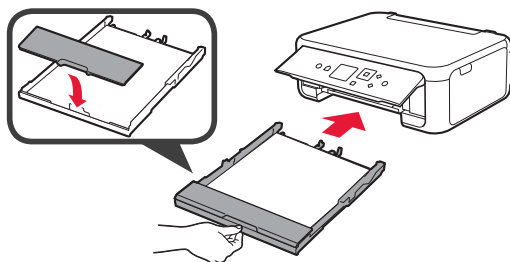
- 2 Open the paper guides, and then align the guide in front with the mark of LTR or A4.



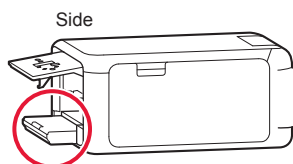
- 3 **1** Load plain LTR or A4 size paper with the print side facing down.
2 Slide the right paper guide to align it with the side of the paper stack.
3 Align the paper stack with the paper guide in front.



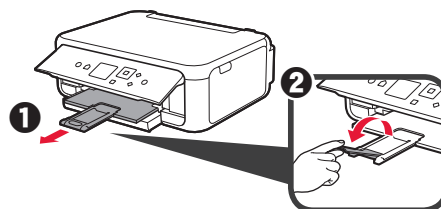
- 4 Attach the cassette cover and insert the cassette.



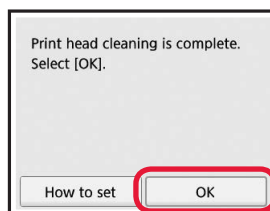
The following figure shows the state after the cassette is inserted.



- 5 **1** Pull out the paper output tray.
2 Open the output tray extension.



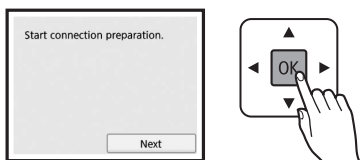
- 6 If the following screen appears, select **OK** with the ◀ or ▶ button, and then press the **OK** button.



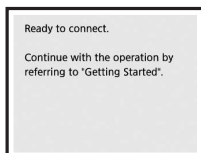
5. Preparing for Connection

In the following description, smartphones and tablet devices are collectively described as smartphone.

1 Press the **OK** button.



2 Make sure that the following screen appears.

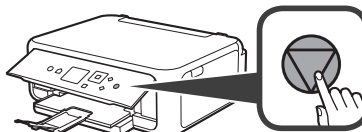


From here on, proceed to a step according to how you use the printer.

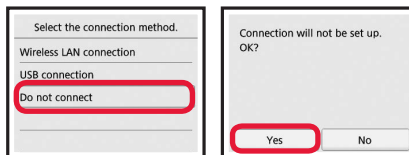
- To use the printer by connecting only to a computer or both to a computer and smartphone
➔ "6-A. Connecting to Computer"
- To use the printer by connecting only to a smartphone
➔ "6-B. Connecting to Smartphone" on page 6
- To use the printer without connecting to a computer or smartphone
➔ "Use Only Printer"

Use Only Printer

1 Press the **Stop** button on the printer.



2 Select **Do not connect** > **Yes** in this order with the ▲, ▼, ◀, or ▶ button, and then press the **OK** button.



The setup is now complete.

6-A. Connecting to Computer



You need a connection setup for each computer. Proceed with the setup from step 1 for each computer.

1 Start the setup file for either method **A** or method **B**.

A Downloading from the Internet

1 Open a web browser (e.g., etc.) on your computer.

2 Input the following URL and access the Canon website.

<http://ij.start.canon>



3 Select **Set Up**.



4 Input the model name of your printer and click **OK**.



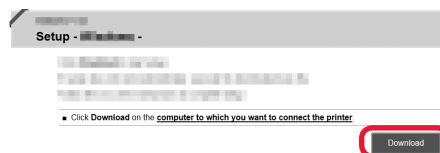
You can select a model name from the list.

5 Click **Setup**.



The procedures for Windows and Mac OS are shown below. If you are using a computer with an OS other than Windows or Mac OS, such as a Chrome OS, do the setup according to the on-screen instructions.

6 Click **Download** and download the setup file.



7 Execute the downloaded file.

Proceed to step 2 on the next page to continue.

B Using Setup CD-ROM (Windows Only)

1 Load the Setup CD-ROM in your computer.

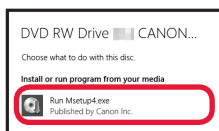


■ When using Windows 10 or Windows 8.1:

2 When the following message appears on the right side of your computer screen, click it.



3 If the following screen appears, click **Run Msetup4.exe**.



4 If the **User Account Control** dialog box appears, click **Yes**.

When This Message Does Not Appear (or Has Disappeared)

1. Click **File Explorer** on the taskbar.



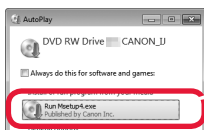
2. Click **This PC** on the left side of the opened window.

3. Double-click the **CD-ROM** icon on the right side of the window. If the contents of the CD-ROM appear, double-click **Msetup4.exe**.

4. Proceed to step 4.

■ When using Windows 7:

2 When the **AutoPlay** screen appears, click **Run Msetup4.exe**.



When **AutoPlay** Screen Does Not Appear

1. Click **Computer** from the start menu.

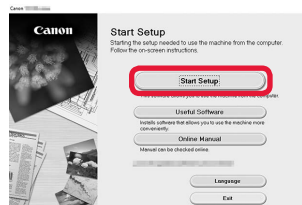
2. Double-click the **CD-ROM** icon on the right side of the opened window. If the contents of the CD-ROM appear, double-click **Msetup4.exe**.

3 If the **User Account Control** dialog box appears, click **Continue**.

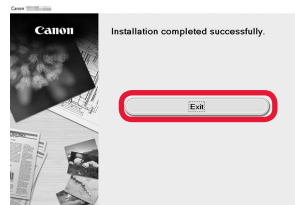
Proceed to step 2 to continue.

2 Click **Start Setup**.

If the following screen appears, click **Exit**.



Follow the on-screen instructions to proceed with the setup.



The connection with your computer is now complete. You can print from your computer.

6-B. Connecting to Smartphone



You need a connection setup for each smartphone. Proceed with the setup from step 1 for each smartphone.

Preparation

- Turn on Wi-Fi on your smartphone.
- If you have a wireless router, connect your smartphone to the wireless router you want to connect to the printer.
- * For operations, refer to manuals of your smartphone and the wireless router or contact those manufacturers.

1 Install the application software Canon PRINT Inkjet/SELPHY in your smartphone.



iOS : Search "Canon PRINT" in App Store.

Android : Search "Canon PRINT" in Google Play.

Or access the Canon website by scanning the QR code.

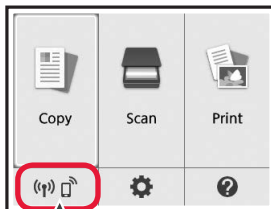


- * You may not connect your smartphone to the Internet wirelessly during connecting the printer to the smartphone directly. In that case, you may be charged depending on the contract with your service provider.
- * Up to 5 devices can be connected to the printer via wireless LAN connection directly.

2 Check the display on the printer.

The screen turns off when no operation is made for about 10 minutes. Press one of the buttons on the operation panel (except for the **ON** button) to display the screen.

- If the following screen appears:
Check the icon on the lower left, and then proceed to **A** or **B**.

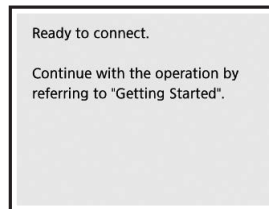


The following icon appears.
(The printer is connected to a network.)



YES

- If the following screen appears:
Proceed to **B**.



No (Proceed to **B**.)

If appears, the printer cannot communicate by wireless LAN connection. For details, access "<http://ij.start.canon>" to see **Frequently Asked Questions**.

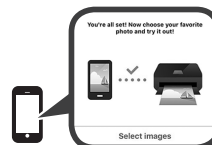
A **iOS** **Android**

- 1 Tap the installed application software.



- 2 Follow the on-screen instructions to register the printer.

- 3 Make sure that the following screen appears.



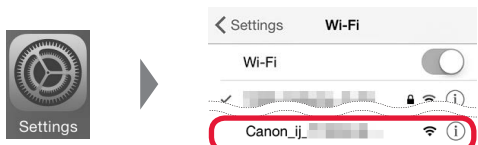
The connection with your smartphone is now complete. You can print from your smartphone.

To print photos, load photo paper. Proceed to "Loading Photo Paper" on page 8.

- B** Procedures below vary depending on iOS or Android. Select your operating system and proceed to its procedure.

iOS

- 1** Tap **Settings** on your smartphone's home screen, and tap **Canon_ij_XXXX** in the Wi-Fi settings.



If **Canon_ij_XXXX** does not appear on the list, see "Preparation for Printer" below to operate the printer, and then repeat step **1**.

- 2** Tap the installed application software.

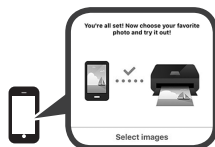


- 3** Follow the on-screen instructions to register the printer.

Follow the on-screen instructions to proceed with the setup.

If you select **Auto Select Conn. Method (recommended)** on the connection method selecting screen, the appropriate connection method is selected automatically depending on your environment.

- 4** Make sure that the right screen appears.



Android

- 1** Tap the installed application software.



- 2** Follow the on-screen instructions to register the printer.

If a message saying "**Printer is not registered. Perform printer setup?**" does not appear, see "Preparation for Printer" below to operate the printer, and then wait for a while until the message appears.

Follow the on-screen instructions to proceed with the setup.

- The appropriate connection method is selected depending on your environment.
- If two printer names appear on the **Register Printer** screen as shown below, select A.
 - A) TS5100 series (xxx.xxx.xxx.xxx)
 - B) Direct-xxxx-TS5100series

- 3** Make sure that the right screen appears.

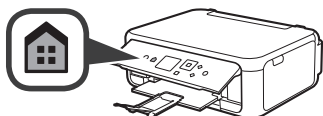


The connection with your smartphone is now complete. You can print from your smartphone.

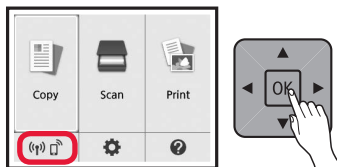
To print photos, load photo paper. Proceed to "Loading Photo Paper" on page 8.

Preparation for Printer

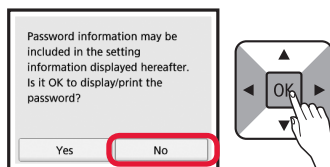
- 1** Press the **HOME** button on the printer.



- 2** Use the **▲**, **▼**, **◀**, or **▶** button to select the icon on the lower left of the Home screen, and then press the **OK** button.



- 3** If the following screen appears, select **No** with the **◀** or **▶** button, and then press the **OK** button.

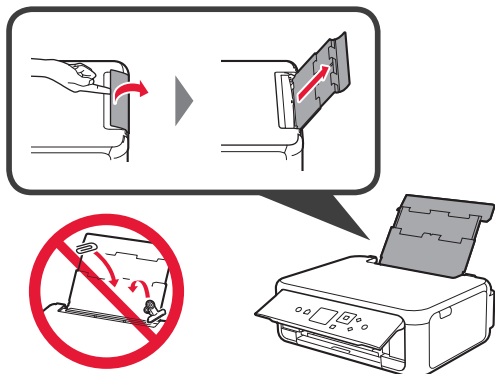


- 4** Use the **▲**, **▼**, **◀**, or **▶** button to select **LAN settings > Wireless LAN > Wireless LAN setup > Easy wireless connect** in order, and then press the **OK** button.
- 5** Use the **◀** or **▶** button to select **Yes**, and then press the **OK** button.
- 6** Return to the operation of your smartphone.

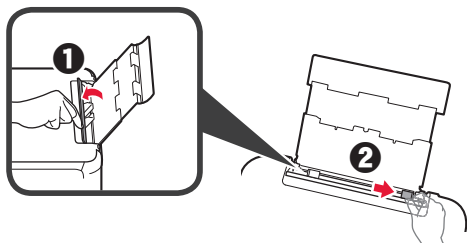
Loading Photo Paper

Load photo paper in the rear tray.

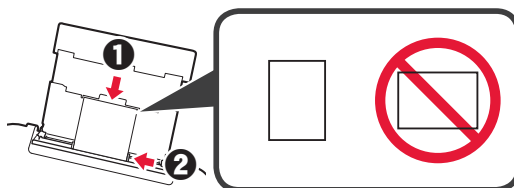
- 1 Open the rear tray cover and pull out the paper support.



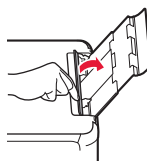
- 2
 - 1 Open the feed slot cover.
 - 2 Slide the right paper guide to the end.



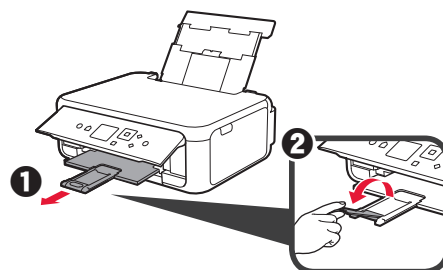
- 3
 - 1 Load several sheets of photo paper with the print side facing up.
 - 2 Slide the right paper guide to align it with the side of the paper stack.



- 4 Close the feed slot cover.
Read the message on the printer's screen and register the information of the loaded paper.



- 5
 - 1 Pull out the paper output tray.
 - 2 Open the output tray extension.



Copying Photos

You can scan the printed photo and print it. You can also scan several photos and print them at once.

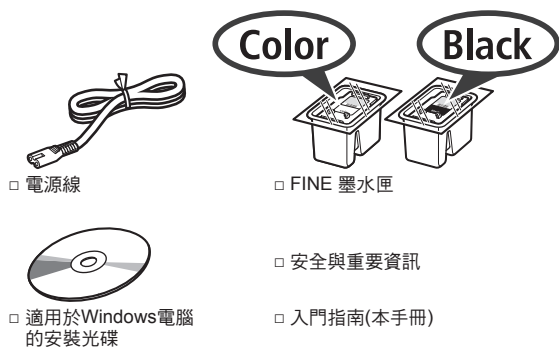
- 1 Make sure the printer is turned on.
- 2 Load several sheets of photo paper.
- 3 Use the ▲, ▼, ◀, or ▶ button to select **Copy** on the Home screen, and then press the **OK** button.
- 4 Use the ▲ or ▼ button to select **Photo copy**, and then press the **OK** button.
- 5 Read the messages and then press the **OK** button.
- 6 Follow the on-screen instructions to load the printed photo on the platen glass, and then press the **OK** button.

- 7 Specify the print settings as necessary.



- 8 Press the **Color** button for color copying. Press the **Black** button for black & white copying.
The printer starts printing.

1. 檢查隨附的物品

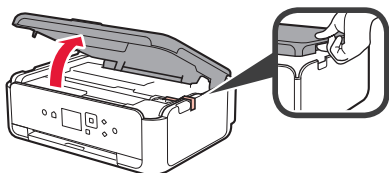


2. 移除包裝材料/開啟印表機

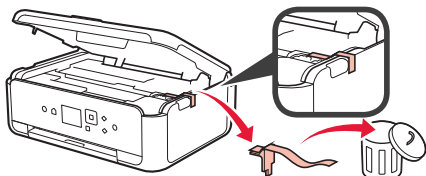


1 移除印表機外部的包裝材料(如橙色膠帶和LCD螢幕上的保護膜)。

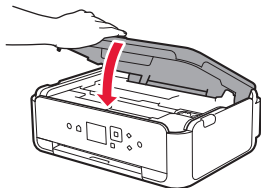
2 用手指勾住印表機兩側的凹處，然後開啟掃描單元/機蓋。



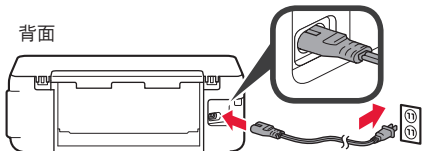
3 移除並捨棄橙色膠帶和保護材料。



4 關閉掃描單元/機蓋。

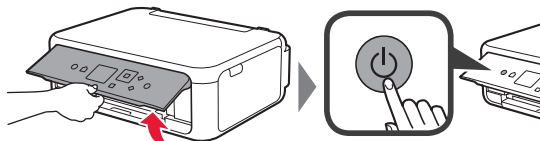


5 從背面斜向連接電源線。

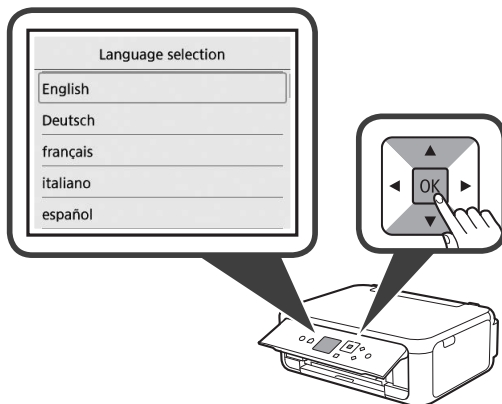


除電源線外，請勿預先連接其他任何電纜線。

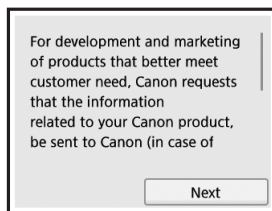
6 抬起操作面板，按**電源**按鈕。



7 使用▲或▼按鈕可選擇語言，然後按**OK**按鈕。

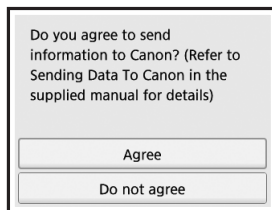


8 按**OK**按鈕。

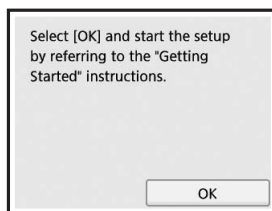


關於傳送至Canon的資訊的詳細資訊，請參閱「安全與重要資訊」中的「將資料傳送至Canon」。

9 使用▲或▼按鈕選擇**同意(Agree)**或**不同意(Do not agree)**，然後按**OK**按鈕。



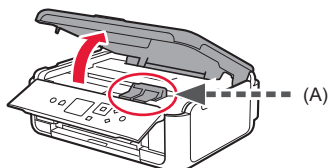
10 閱讀訊息並按**OK**按鈕。



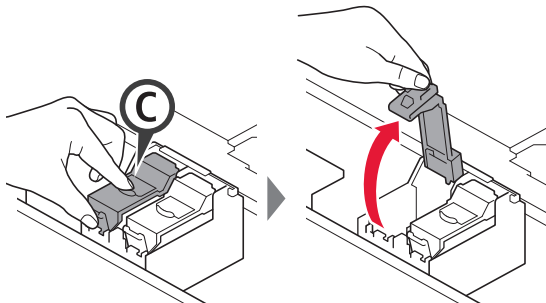
3. 安裝FINE 墨水匣



- 1 開啟掃描單元/機蓋。
⊘ FINE 墨水匣固定座(A)停止前請勿觸摸。

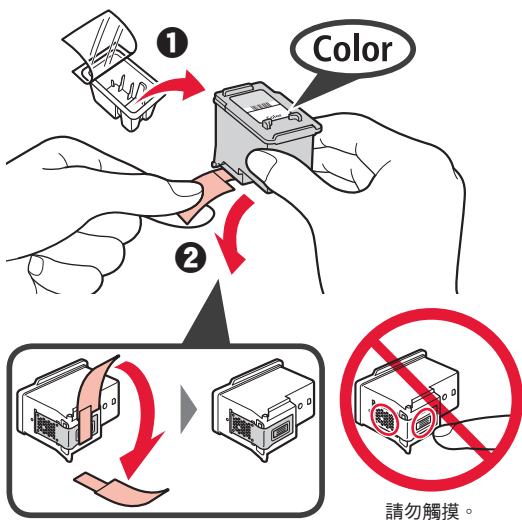


- 2 捏合並開啟左側的墨水匣鎖定蓋ⓐ。



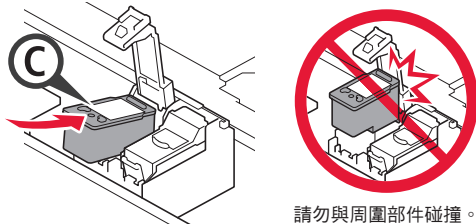
將彩色FINE 墨水匣ⓐ安裝到左側，將黑色FINE 墨水匣ⓑ安裝到右側。

- 3
 - 1 從包裝中取出彩色FINE 墨水匣。
 - 2 移除保護膠帶。

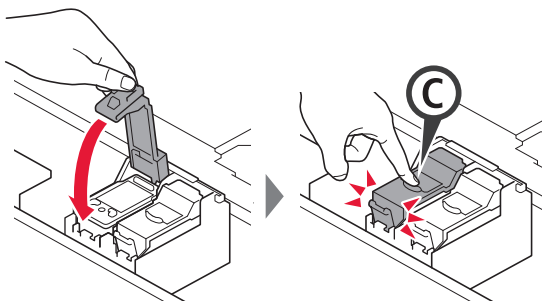


當心保護膠帶上的墨水。

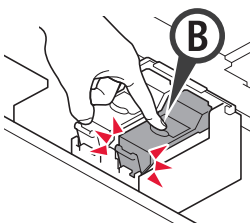
- 4 將彩色FINE 墨水匣安裝到左側的FINE 墨水匣固定座ⓐ中。



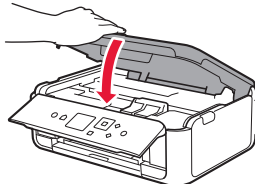
- 5 適當地用力向下推墨水匣鎖定蓋中的ⓐ直至其卡入到位，以將其完全關閉。



- 6 重複步驟2到5，以同樣方式將黑色FINE 墨水匣安裝到右側。



- 7 關閉掃描單元/機蓋。

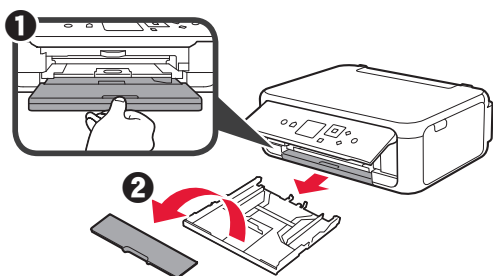


如果螢幕上出現錯誤訊息，請確保FINE 墨水匣安裝正確。

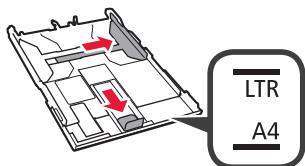
4. 載入紙張



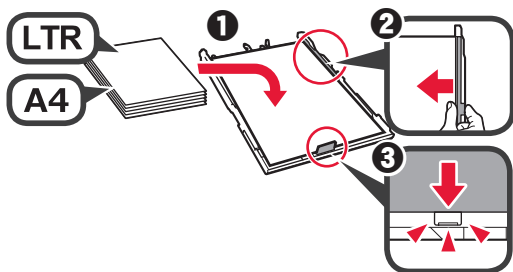
- 1 拉出紙匣。
- 2 移除紙匣蓋。



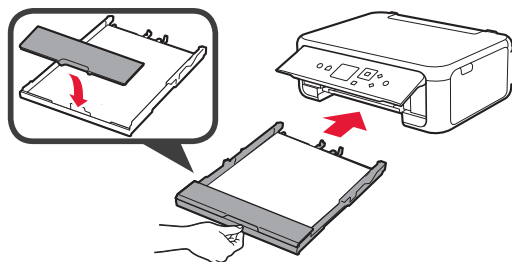
- 2 開啟紙張導引器，然後將前端的導引器與LTR或A4標記對齊。



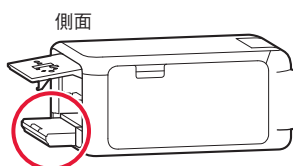
- 3 將列印面向下載入LTR或A4大小的一般紙張。
- 2 移動右紙張導引器使其與紙疊邊緣對齊。
- 3 將紙疊與前端的紙張導引器對齊。



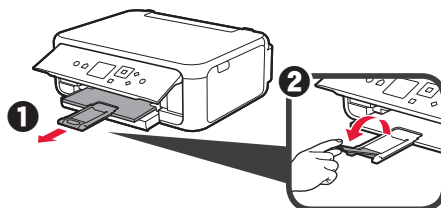
- 4 安裝紙匣蓋並插入紙匣。



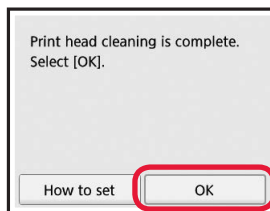
下圖顯示插入紙匣後的狀態。



- 5 拉出出紙托盤。
- 2 開啟出紙托盤擴展架。



- 6 如果顯示以下螢幕，使用◀或▶按鈕選擇OK，然後按OK按鈕。



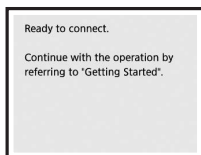
5. 連接準備

在以下說明中，將智慧型手機或平板裝置統一描述為智慧型手機。

1 按OK按鈕。



2 請確保顯示以下螢幕。

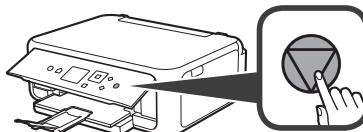


從這裡開始，根據印表機的使用方式執行步驟。

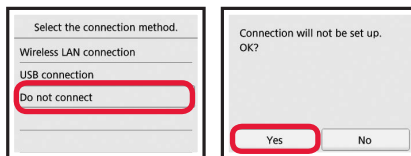
- 若要透過僅連接至電腦或同時連接至電腦和智慧型手機來使用印表機
➡ 「6-A. 連接到電腦」
- 若要透過僅連接到智慧型手機來使用印表機
➡ 「6-B. 連接到智慧型手機」第6頁
- 若要在未連接電腦或智慧型手機的情況下使用印表機
➡ 「僅使用印表機」

僅使用印表機

1 按印表機上的停止按鈕。



2 使用▲、▼、◀或▶按鈕按順序選擇不連接(Do not connect) > 是(Yes)，然後按OK按鈕。



設定現已完成。

6-A. 連接到電腦



需要為每台電腦執行連接設定。從步驟1開始繼續設定每台電腦。

1 透過方法A或方法B啟動安裝程式檔案。

A 從網際網路下載

- 1 在電腦上開啟網頁瀏覽器(等)。
- 2 輸入以下URL並存取Canon網站。

<http://ij.start.canon>



3 選擇設定。



4 輸入印表機的型號名稱並按一下確定。



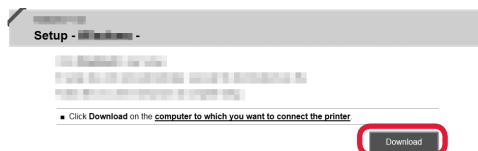
可以從清單中選擇型號名稱。

5 按一下設定。



適用於Windows和Mac OS的步驟如下所示。如果正在使用的電腦作業系統為Windows或Mac OS以外的作業系統(例如Chrome OS)，請按照螢幕上的說明進行設定。

6 按一下下載，下載安裝程式檔案。



7 執行下載的檔案。

繼續執行下一頁上的步驟2。

B 使用安裝光碟(僅Windows)

- 1 將安裝光碟載入電腦。

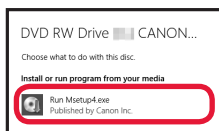


- 使用Windows 10或Windows 8.1時：

- 2 電腦螢幕右側顯示以下訊息時，按一下該訊息。



- 3 如果顯示以下螢幕，請按一下執行 Msetup4.exe(Run Msetup4.exe)。



未顯示此訊息(或訊息消失)時

1. 按一下工作列上的檔案總管(File Explorer)。



2. 在開啟的視窗之左側按一下本機(This PC)。
3. 按兩下視窗右側的光碟圖示。
如果顯示光碟內容，則按兩下 Msetup4.exe。
4. 繼續執行步驟 1。

- 4 如果顯示使用者帳戶控制(User Account Control)對話方塊，請按一下是(Yes)。

- 使用Windows 7時：

- 2 顯示自動播放(AutoPlay)螢幕時，按一下執行 Msetup4.exe(Run Msetup4.exe)。



未顯示自動播放(AutoPlay)螢幕時

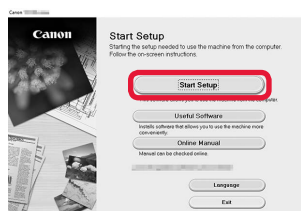
1. 從開始功能表按一下電腦(Computer)。
2. 按兩下已開啟視窗之右側的光碟圖示。
如果顯示光碟內容，則按兩下 Msetup4.exe。

- 3 如果顯示使用者帳戶控制(User Account Control)對話方塊，請按一下繼續(Continue)。

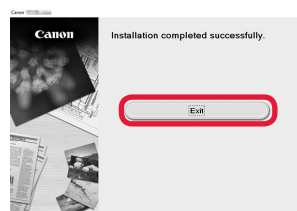
繼續進行步驟 2。

- 2 按一下開始設定(Start Setup)。

如果顯示以下螢幕，請按一下結束(Exit)。



按照螢幕上的說明繼續進行設定。



與電腦的連接現已完成。可以從電腦列印。

6-B. 連接到智慧型手機



需要為每部智慧型手機執行連接設定。從步驟1開始繼續設定每部智慧型手機。

準備工作

- 請開啟智慧型手機上的Wi-Fi。
- 如果有無線路由器，則將智慧型手機連接至要連接印表機的無線路由器。
- * 關於操作的詳細資訊，請參閱所用智慧型手機和無線路由器的手冊，或與其製造商聯絡。

1 將應用程式軟體Canon PRINT Inkjet/SELPHY安裝到智慧型手機中。



iOS：在App Store中搜尋「Canon PRINT」。

Android：在Google Play中搜尋「Canon PRINT」。

或者透過掃描QR代碼存取Canon網站。

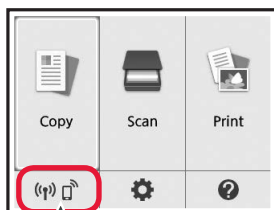


- * 將印表機直接連接至智慧型手機時，可能無法以無線方式將智慧型手機連接至網際網路。在這種情況下，根據與服務提供者的合約，您可能需要支付費用。
- * 透過無線LAN連接最多可以將5個裝置直接連接至印表機。

2 查看印表機上的顯示。

約10分鐘內未進行操作時，螢幕會關閉。按操作面板上的任一按鈕(電源按鈕除外)可顯示螢幕。

- 如果顯示以下螢幕：
查看左下方的圖示，然後繼續執行**A**或**B**。

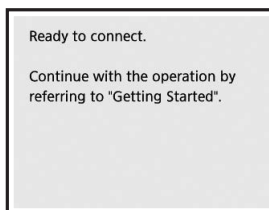


顯示以下圖示。
(印表機已連接至網路。)



是

- 如果顯示以下螢幕：
繼續執行**B**。



否(繼續執行**B**。)

如果顯示 (P)，則印表機無法透過無線LAN連接通訊。關於詳細資訊，請存取「<http://ij.start.canon>」以查看常見問題。

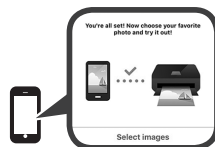
A **iOS** **Android**

- 1 點選已安裝的應用程式軟體。



- 2 按照螢幕上的說明註冊印表機。

- 3 請確保顯示以下螢幕。



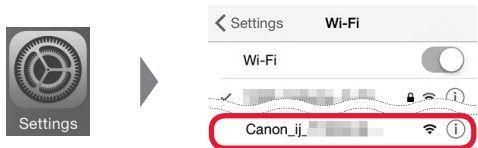
與智慧型手機的連接現已完成。可以從智慧型手機列印。

要列印相片，請載入相片紙。繼續執行第8頁的「載入相片紙」。

B 以下步驟視iOS或Android而有所不同。選擇所用作業系統，然後繼續執行相應步驟。

iOS

- 1 點選智慧型手機主頁螢幕上的**設定(Settings)**，然後點選Wi-Fi設定中的**Canon_ij_XXXX**。



如果**Canon_ij_XXXX**未顯示在清單上，請參見下方的「印表機準備工作」來操作印表機，然後重複步驟**1**。

- 2 點選已安裝的應用程式軟體。

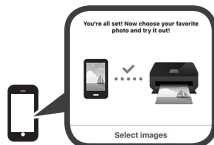


- 3 按照螢幕上的說明註冊印表機。

按照螢幕上的說明繼續進行設定。

如果在選擇連接方法的螢幕上選擇**自動選擇連接方法(推薦)(Auto Select Conn. Method (recommended))**，則會根據使用環境自動選擇適當的連接方法。

- 4 請確保顯示右側的螢幕。



Android

- 1 點選已安裝的應用程式軟體。



- 2 按照螢幕上的說明註冊印表機。

如果不顯示訊息「**印表機未註冊。是否執行印表機設定？(Printer is not registered. Perform printer setup?)**」，請參見下方的「印表機準備工作」來操作印表機，訊息顯示前，請稍候片刻。

按照螢幕上的說明繼續進行設定。

- 根據使用環境選擇適當的連接方法。
- 如果**註冊印表機(Register Printer)**螢幕上出現兩個印表機名稱(如下所示)，請選擇A。
A) TS5100 series (xxx.xxx.xxx.xxx)
B) Direct-xxxx-TS5100series

- 3 請確保顯示右側的螢幕。

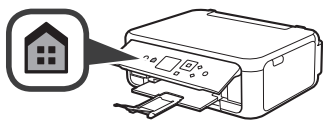


與智慧型手機的連接現已完成。可以從智慧型手機列印。

要列印相片，請載入相片紙。繼續執行第8頁的「載入相片紙」。

印表機準備工作

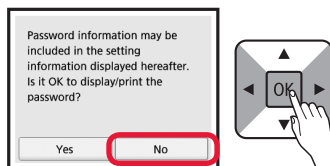
- 1 按印表機上的主頁按鈕。



- 2 使用▲、▼、◀或▶按鈕選擇主頁螢幕左下方的圖示，然後按OK按鈕。



- 3 如果顯示以下螢幕，使用◀或▶按鈕選擇否(No)，然後按OK按鈕。



- 4 使用▲、▼、◀或▶按鈕按順序選擇**LAN設定(LAN settings) > 無線LAN(Wireless LAN) > 無線LAN設定(Wireless LAN setup) > 簡易無線連接(Easy wireless connect)**，然後按OK按鈕。

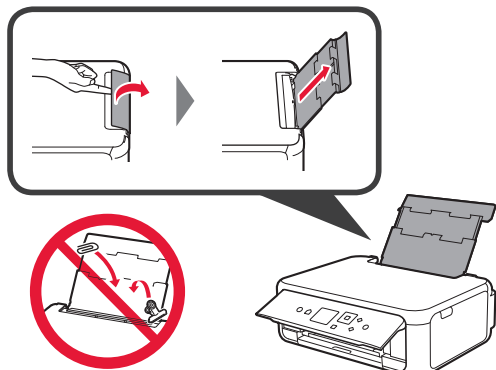
- 5 使用◀或▶按鈕選擇是(Yes)，然後按OK按鈕。

- 6 返回智慧型手機的操作。

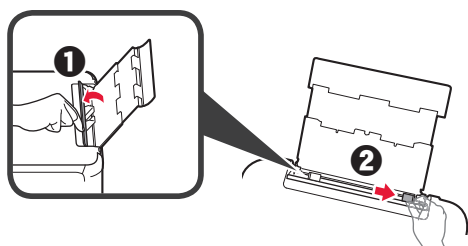
載入相片紙

在後端托盤中載入相片紙。

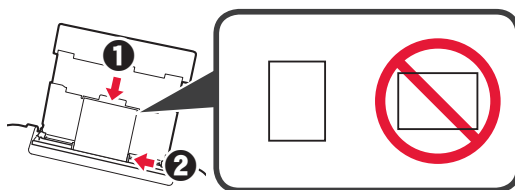
- 1 開啟後端托盤蓋並拉出托紙架。



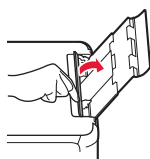
- 2 1 開啟送紙槽蓋板。
2 移動右紙張導引器至最右端。



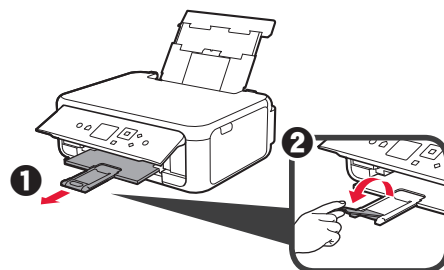
- 3 1 將列印面向上載入多張相片紙。
2 移動右紙張導引器使其與紙疊邊緣對齊。



- 4 關閉送紙槽蓋板。
閱讀印表機螢幕上的訊息並註冊載入紙張的資訊。



- 5 1 拉出出紙托盤。
2 開啟出紙托盤擴展架。



影印相片

可以掃描列印的相片，然後進行列印。可以一次掃描並列印多張相片。

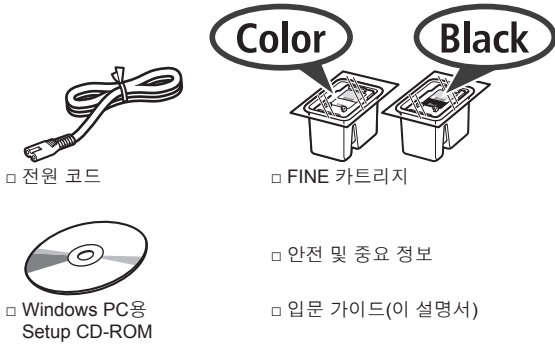
- 1 請確保印表機已開啟。
- 2 請載入多張相片紙。
- 3 使用▲、▼、◀或▶按鈕選擇主頁螢幕上的**影印(Copy)**，然後按**OK**按鈕。
- 4 使用▲或▼按鈕選擇**相片影印(Photo copy)**，然後按**OK**按鈕。
- 5 閱讀訊息並按**OK**按鈕。
- 6 按照螢幕上的說明將列印的相片放置在原稿玻璃上，然後按**OK**按鈕。

- 7 根據需要指定列印設定。



- 8 按**彩色**按鈕進行彩色影印。
按**黑白**按鈕進行黑白影印。
印表機開始列印。

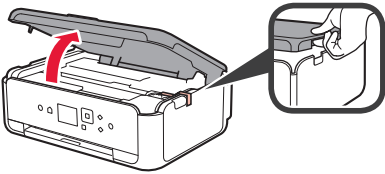
1. 동봉품 확인하기



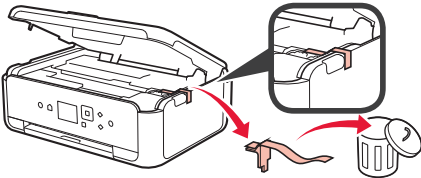
2. 포장 재료 제거하기/프린터 켜기



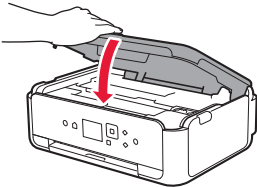
- 1 프린터 외부에서 포장 재료(오렌지색 테이프 및 LCD의 보호 필름 등)를 제거합니다.
- 2 프린터 양쪽의 오목한 홈에 손가락을 걸고 스캔 유닛/커버를 엽니다.



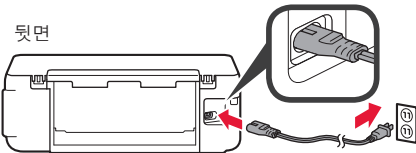
- 3 오렌지색 테이프 및 보호 재료를 제거하여 버립니다.



- 4 스캔 유닛/커버를 닫습니다.

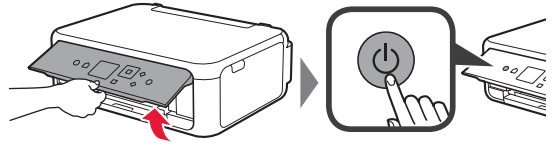


- 5 전원 코드를 뒷면에서 사선 방향으로 연결합니다.

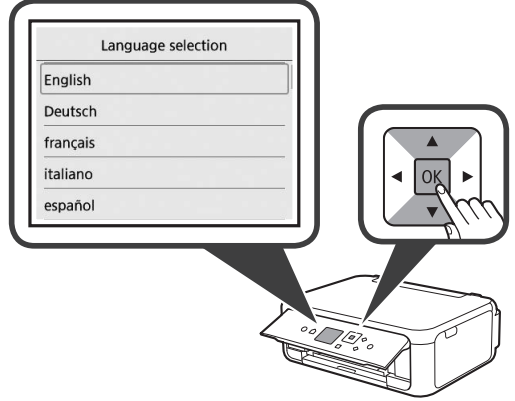


전원 코드를 제외한 다른 케이블은 아직 연결하지 마십시오.

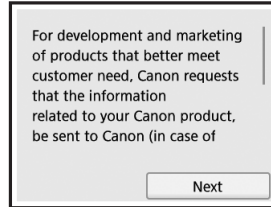
- 6 조작판을 올리고 전원(ON) 버튼을 누릅니다.



- 7 ▲ 또는 ▼ 버튼을 사용하여 언어를 선택한 다음 OK 버튼을 누릅니다.

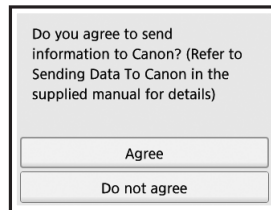


- 8 OK 버튼을 누릅니다.

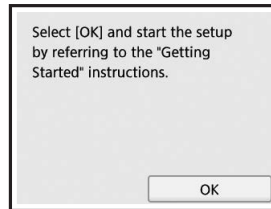


Canon에 전송되는 정보에 대한 자세한 내용은 안전 및 중요 정보의 "Canon에 데이터 전송하기"를 참조하십시오.

- 9 ▲ 또는 ▼ 버튼을 사용하여 동의함(Agree) 또는 동의 안 함(Do not agree)을 선택한 다음 OK 버튼을 누릅니다.



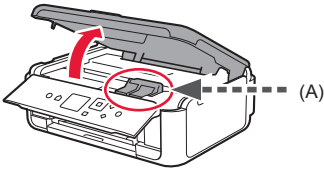
- 10 메시지를 읽은 다음 OK 버튼을 누릅니다.



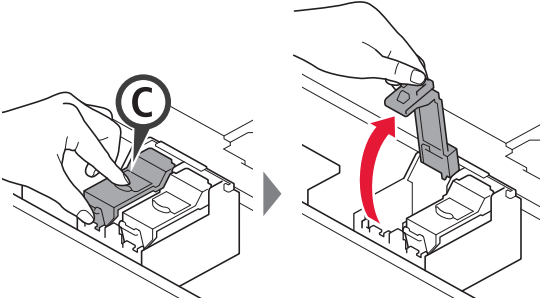
3. FINE 카트리지 설치하기



- 스캔 유닛/커버를 엽니다.
 ⚠ FINE 카트리지 홀더(A)가 멈출 때까지 만지지 마십시오.

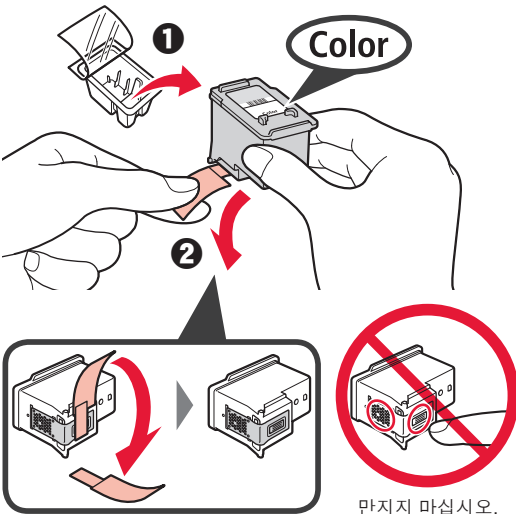


- 왼쪽 ㉔의 잉크 카트리지 잠금 커버를 집어 엽니다.



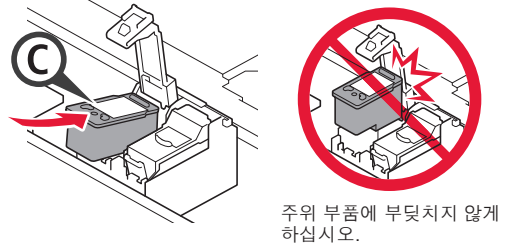
컬러 FINE 카트리지 ㉔를 왼쪽에 설치하고 블랙 FINE 카트리지 ㉔를 오른쪽에 설치합니다.

- 포장에서 컬러 FINE 카트리지를 꺼냅니다.
- 보호 테이프를 제거합니다.

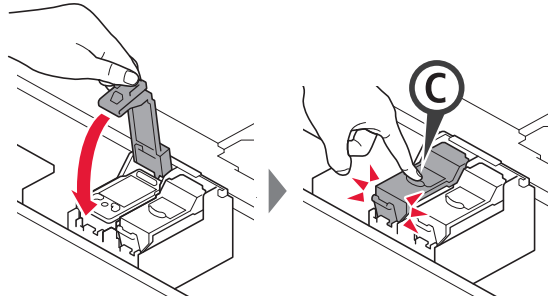


보호 테이프에 있는 잉크를 조심하십시오.

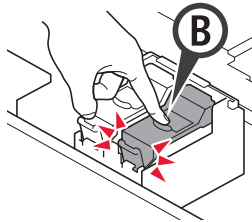
- 왼쪽 ㉔의 FINE 카트리지 홀더에 컬러 FINE 카트리지를 설치합니다.



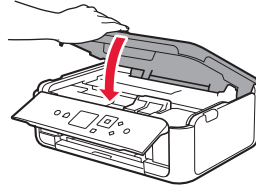
- 잉크 카트리지 잠금 커버의 ㉔를 딸깍 소리를 내며 제자리에 끼워질 때까지 아래로 확실하게 눌러 완전히 닫습니다.



- 2~5단계를 반복하여 블랙 FINE 카트리지를 오른쪽에 설치합니다.



- 스캔 유닛/커버를 닫습니다.

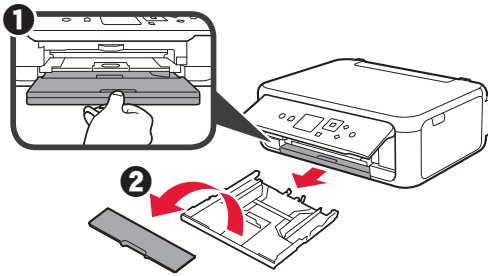


화면에 오류 메시지가 나타나면 FINE 카트리지가 올바르게 설치되었는지 확인하십시오.

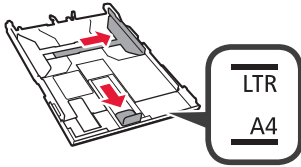
4. 용지 로드하기



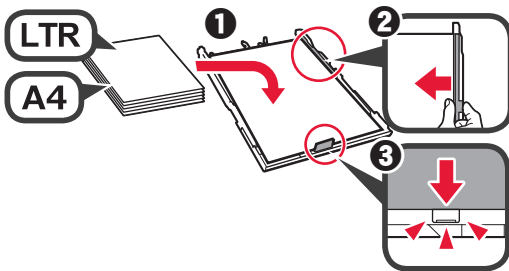
- 1 ❶ 카세트를 빼냅니다.
- 2 ❷ 카세트 커버를 제거합니다.



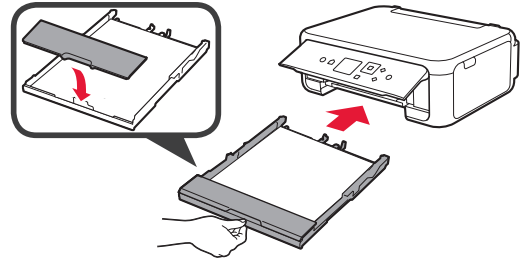
- 2 용지 가이드를 연 다음 앞쪽의 가이드를 LTR 또는 A4 표시에 맞춥니다.



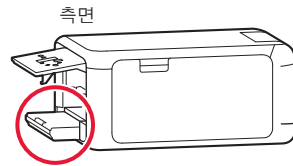
- 3 ❶ LTR 또는 A4 크기의 보통 용지를 인쇄면이 아래로 향하게 하여 로드합니다.
- 2 ❷ 오른쪽 용지 가이드를 용지 더미의 측면에 맞게 밀니다.
- 3 ❸ 용지 더미를 앞쪽의 용지 가이드에 맞춥니다.



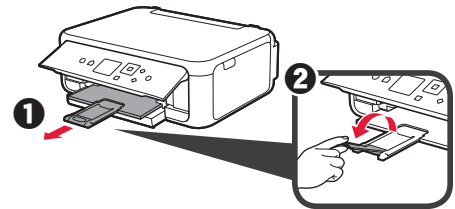
- 4 카세트 커버를 부착하고 카세트를 삽입합니다.



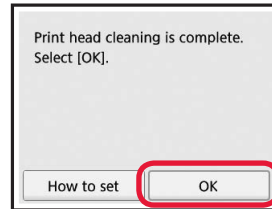
다음 그림은 카세트가 삽입된 후의 상태입니다.



- 5 ❶ 용지 출력 트레이를 빼냅니다.
- 2 ❷ 연장 출력 트레이를 엽니다.



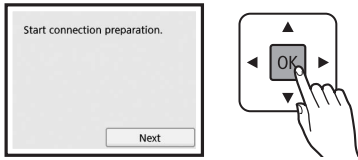
- 6 다음 화면이 나타나면 ◀ 또는 ▶ 버튼으로 OK를 선택한 다음 OK 버튼을 누릅니다.



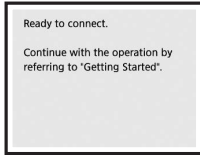
5. 연결 준비하기

다음 설명에서는 스마트폰과 태블릿 장치를 스마트폰으로 총칭하여 설명합니다.

1 OK 버튼을 누릅니다.



2 다음 화면이 나타나는지 확인합니다.

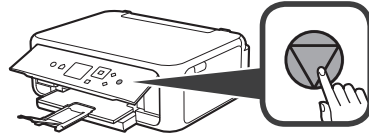


여기서부터는 프린터의 사용 방식에 따라 해당 단계로 이동하십시오.

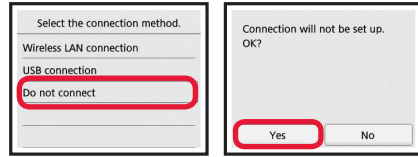
- 프린터를 컴퓨터에만 연결하거나 컴퓨터 및 스마트폰 모두에 연결하여 사용하려면
➡ "6-A. 컴퓨터에 연결하기"
- 프린터를 스마트폰에만 연결하여 사용하려면
➡ 6페이지의 "6-B. 스마트폰에 연결하기"
- 프린터를 컴퓨터 또는 스마트폰에 연결하지 않고 사용하려면
➡ "프린터만 사용하는 경우"

프린터만 사용하는 경우

1 프린터의 중지(Stop) 버튼을 누릅니다.



2 ▲, ▼, ◀ 또는 ▶ 버튼으로 **연결 안 함(Do not connect) > 예(Yes)**를 차례로 선택한 다음 OK 버튼을 누릅니다.



이제 설정이 완료되었습니다.

6-A. 컴퓨터에 연결하기



컴퓨터마다 연결 설정이 필요합니다. 각 컴퓨터에서 1단계부터 설정을 진행하십시오.

1 A 방법 또는 B 방법으로 설치 파일을 시작합니다.

A 인터넷에서 다운로드하기

- 1 컴퓨터에서 웹 브라우저(☺ 등)를 엽니다.
- 2 다음 URL을 입력하고 Canon 웹 사이트에 액세스합니다.
<http://ij.start.canon>
- 3 설정을 선택합니다.
- 4 프린터의 모델 이름을 입력하고 확인을 클릭합니다.



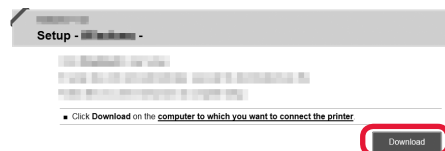
목록에서 모델 이름을 선택할 수 있습니다.

5 설정을 클릭합니다.



Windows 및 Mac OS에서의 절차는 아래와 같습니다. 사용하는 컴퓨터의 OS가 Windows 또는 Mac OS 이외의 OS(Chrome OS 등)인 경우, 화면의 설명에 따라 설정하십시오.

6 다운로드를 클릭하여 설치 파일을 다운로드합니다.



7 다운로드한 파일을 실행합니다.

다음 페이지의 2단계로 이동하여 계속하십시오.

B Setup CD-ROM 사용하기(Windows만 해당)

1 컴퓨터에 Setup CD-ROM을 로드합니다.

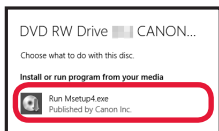


■ Windows 10 또는 Windows 8.1을 사용하는 경우:

2 컴퓨터 화면의 오른쪽에 다음 메시지가 나타나면 메시지를 클릭합니다.



3 다음 화면이 나타나면 **Msetup4.exe 실행(Run Msetup4.exe)**을 클릭합니다.



4 사용자 계정 컨트롤(User Account Control) 대화 상자가 나타나면 **예(Yes)**를 클릭합니다.

이 메시지가 나타나지 않는 경우(또는 사라진 경우)

1. 작업 표시줄에서 **파일 탐색기(File Explorer)**를 클릭합니다.



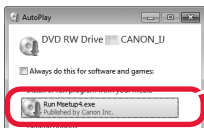
2. 열린 창의 왼쪽에서 **내 PC(This PC)**를 클릭합니다.

3. 창 오른쪽에서 **CD-ROM** 아이콘을 더블 클릭합니다. CD-ROM 내용이 나타나면 **Msetup4.exe**를 더블 클릭합니다.

4. 4단계로 이동합니다.

■ Windows 7을 사용하는 경우:

2 자동 실행(AutoPlay) 화면이 나타나는 경우 **Msetup4.exe 실행(Run Msetup4.exe)**을 클릭합니다.



자동 실행(AutoPlay) 화면이 나타나지 않는 경우

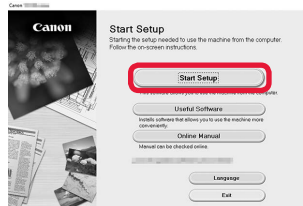
1. 시작 메뉴에서 **컴퓨터(Computer)**를 클릭합니다.

2. 열린 창의 오른쪽에서 **CD-ROM** 아이콘을 더블 클릭합니다. CD-ROM 내용이 나타나면 **Msetup4.exe**를 더블 클릭합니다.

3 사용자 계정 컨트롤(User Account Control) 대화 상자가 나타나면 **계속(Continue)**을 클릭합니다.

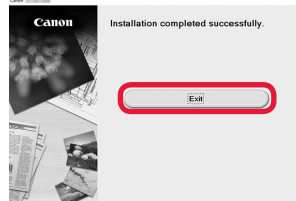
2단계로 이동하여 계속하십시오.

2 설정 시작(Start Setup)을 클릭합니다.



화면의 설명에 따라 설정을 계속하십시오.

다음 화면이 나타나면 **끝내기(Exit)**를 클릭합니다.



이제 컴퓨터와의 연결이 완료되었습니다. 컴퓨터에서 인쇄할 수 있습니다.

6-B. 스마트폰에 연결하기



스마트폰마다 연결 설정이 필요합니다. 각 스마트폰에서 1단계부터 설정을 진행하십시오.

준비

- 스마트폰에서 Wi-Fi를 켜십시오.
- 무선 라우터가 있다면 프린터와 연결할 무선 라우터에 스마트폰을 연결하십시오.
- * 조작에 대한 내용은 스마트폰 및 무선 라우터의 설명서를 참조하거나 그 제조업체에 문의하십시오.

1 스마트폰에 Canon PRINT Inkjet/SELPHY(어플리케이션 소프트웨어)를 설치합니다.



iOS : App Store에서 "Canon PRINT"를 검색합니다.

Android : Google Play에서 "Canon PRINT"를 검색합니다.

또는 QR 코드를 스캔하여 Canon 웹 사이트에 액세스하십시오.

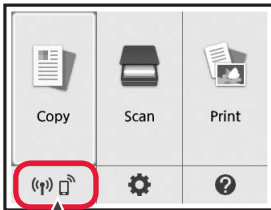


- * 프린터를 스마트폰에 직접 연결하는 중에는 스마트폰을 무선으로 인터넷에 연결하지 못할 수 있습니다. 이런 경우에는 서비스 공급자와의 계약에 따라 요금이 청구될 수 있습니다.
- * 무선 LAN 연결을 통해 최대 5대의 장치를 프린터에 직접 연결할 수 있습니다.

2 프린터 화면을 확인합니다.

약 10분 동안 조작하지 않으면 화면이 꺼집니다. 화면을 표시하려면 조작판 버튼 중 하나(전원(ON) 버튼 제외)를 누르십시오.

- 다음 화면이 나타나는 경우:
왼쪽 아래의 아이콘을 확인한 다음 **A** 또는 **B**로 이동하십시오.

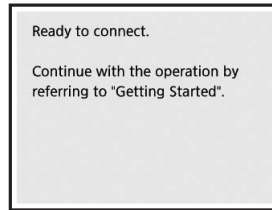


다음 아이콘이 나타납니다.
(프린터가 네트워크에 연결되었습니다.)



예

- 다음 화면이 나타나는 경우:
B로 이동하십시오.



아니요(**B**로 이동하십시오.)

(Wi-Fi) 이 나타나면 프린터는 무선 LAN 연결을 통해 통신할 수 없습니다. 자세한 내용은 "http://ij.start.canon"에 액세스하여 자주 묻는 질문을 참조하십시오.

A iOS Android

1 설치한 어플리케이션 소프트웨어를 누릅니다.



2 화면의 설명에 따라 프린터를 등록합니다.

3 다음 화면이 나타나는지 확인합니다.



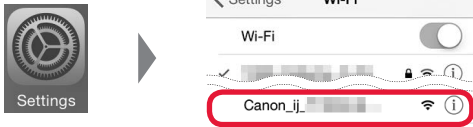
이제 스마트폰과의 연결이 완료되었습니다.
스마트폰에서 인쇄할 수 있습니다.

사진을 인쇄하려면 포토 용지를 로드하십시오.
8페이지의 "포토 용지 로드하기"로 이동하십시오.

B iOS 또는 Android에 따라 아래 절차가 다릅니다. 사용 중인 운영 체제를 선택하고 해당 절차로 이동하십시오.

iOS

- 스마트폰의 홈 화면에서 **설정(Settings)**을 누른 다음 Wi-Fi 설정에서 **Canon_ij_XXXX**를 누릅니다.



목록에 **Canon_ij_XXXX**가 나타나지 않으면 아래의 "프린터 준비"를 참조하여 프린터를 조작한 다음 ① 단계를 반복하십시오.

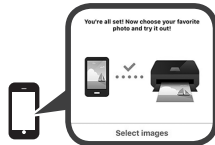
- 설치한 어플리케이션 소프트웨어를 누릅니다.



- 화면의 설명에 따라 프린터를 등록합니다.

화면의 설명에 따라 설정을 계속하십시오.
연결 방법 선택 화면에서 **연결 방법 자동 선택(권장)(Auto Select Conn. Method (recommended))**을 선택한 경우 사용하는 환경에 따라 적합한 연결 방법이 자동으로 선택됩니다.

- 오른쪽 화면이 나타나는지 확인합니다.



Android

- 설치한 어플리케이션 소프트웨어를 누릅니다.



- 화면의 설명에 따라 프린터를 등록합니다.

"프린터가 등록되어 있지 않습니다. 프린터 설정을 수행하시겠습니까?(Printer is not registered. Perform printer setup?)"라는 메시지가 나타나지 않으면 아래의 "프린터 준비"를 참조하여 프린터를 조작한 다음 메시지가 나타날 때까지 잠시 기다리십시오.

화면의 설명에 따라 설정을 계속하십시오.

- 사용하는 환경에 따라 적합한 연결 방법이 선택됩니다.
- 아래와 같이 **프린터 등록(Register Printer)** 화면에 프린터 이름이 두 개 나타날 경우 A를 선택하십시오.
A) TS5100 series (xxx.xxx.xxx.xxx)
B) Direct-xxxx-TS5100series

- 오른쪽 화면이 나타나는지 확인합니다.

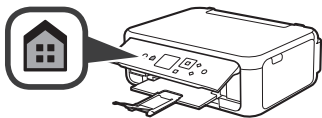


이제 스마트폰과의 연결이 완료되었습니다. 스마트폰에서 인쇄할 수 있습니다.

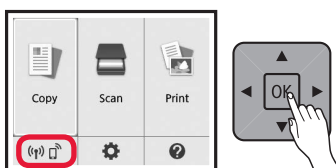
사진을 인쇄하려면 포토 용지를 로드하십시오. 8페이지의 "포토 용지 로드하기"로 이동하십시오.

프린터 준비

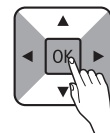
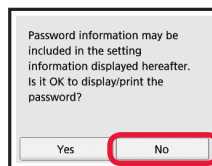
- 프린터의 **홈(HOME)** 버튼을 누릅니다.



- ▲, ▼, ◀ 또는 ▶ 버튼을 사용하여 홈 화면의 왼쪽 아래에 있는 아이콘을 선택한 다음 **OK** 버튼을 누릅니다.



- 다음 화면이 나타나면 ◀ 또는 ▶ 버튼으로 **아니오(No)**를 선택한 다음 **OK** 버튼을 누릅니다.



- ▲, ▼, ◀ 또는 ▶ 버튼을 사용하여 **LAN 설정(LAN settings) > 무선 LAN(Wireless LAN) > 무선 LAN 설정(Wireless LAN setup) > 간단한 무선 연결(Easy wireless connect)**을 차례로 선택한 다음 **OK** 버튼을 누릅니다.

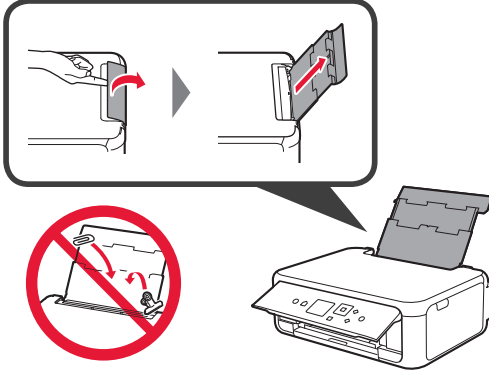
- ◀ 또는 ▶ 버튼을 사용하여 **예(Yes)**를 선택한 다음 **OK** 버튼을 누릅니다.

- 스마트폰의 조작으로 돌아갑니다.

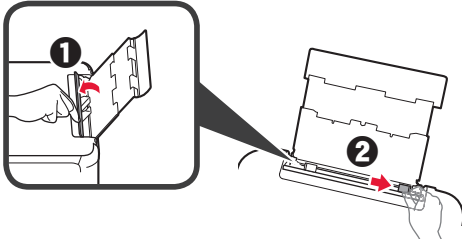
포토 용지 로드하기

뒷면 트레이에 포토 용지를 로드합니다.

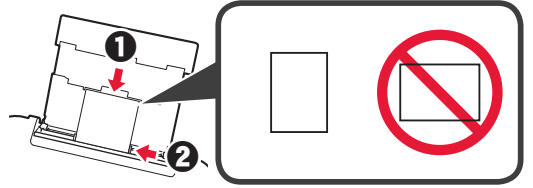
- 1 뒷면 트레이 커버를 열고 용지 받침대를 빼냅니다.



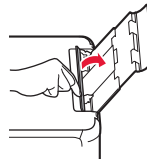
- 2
 - 1 용지 공급 슬롯 커버를 엽니다.
 - 2 오른쪽 용지 가이드를 끝까지 밀어 넣습니다.



- 3
 - 1 여러 장의 포토 용지를 인쇄면이 위로 향하게 하여 로드합니다.
 - 2 오른쪽 용지 가이드를 용지 더미의 측면에 맞게 밀어 넣습니다.



- 4 용지 공급 슬롯 커버를 닫습니다. 프린터 화면의 메시지를 읽은 다음 로드한 용지의 정보를 등록합니다.



- 5
 - 1 용지 출력 트레이를 빼냅니다.
 - 2 연장 출력 트레이를 엽니다.

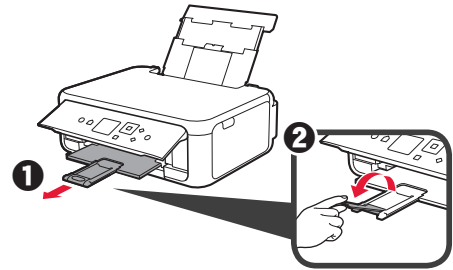


사진 복사하기

인쇄한 사진을 스캔하여 인쇄할 수 있습니다. 여러 장의 사진을 스캔하여 한 번에 인쇄할 수도 있습니다.





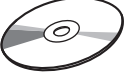


- 1 프린터가 켜져 있는지 확인합니다.
- 2 여러 장의 포토 용지를 로드합니다.
- 3 ▲, ▼, ◀ 또는 ▶ 버튼을 사용하여 홈 화면에서 **복사(Copy)**를 선택한 다음 **OK** 버튼을 누릅니다.
- 4 ▲ 또는 ▼ 버튼을 사용하여 **사진 복사(Photo copy)**를 선택한 다음 **OK** 버튼을 누릅니다.
- 5 메시지를 읽은 다음 **OK** 버튼을 누릅니다.
- 6 화면의 설명에 따라 평판 유리 위에 인쇄한 사진을 로드한 다음 **OK** 버튼을 누릅니다.

- 7 필요에 따라 인쇄 설정을 지정합니다.



- 8 컬러 복사를 하려면 **컬러(Color)** 버튼을 누릅니다. 흑백 복사를 하려면 **흑백(Black)** 버튼을 누릅니다. 프린터가 인쇄를 시작합니다.

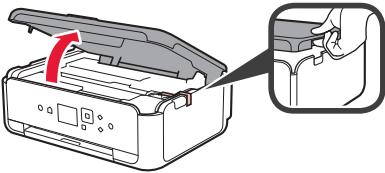
1. ตรวจสอบสิ่งที่บรรจุในกล่อง

-  สายไฟ
-  Color
-  Black
-  คาร์ทริด FINE
-  Setup CD-ROM สำหรับ Windows ที่ใช้งานกับเครื่องพีซี
-  ข้อมูลความปลอดภัยและสำคัญ
-  คำแนะนำเริ่มต้น (คู่มือ)

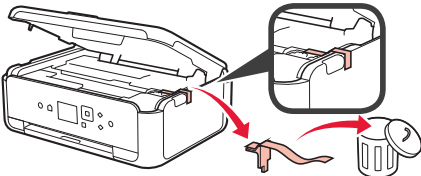
2. การเอาวัสดุห่อหุ้มออก/การเปิดเครื่องพิมพ์



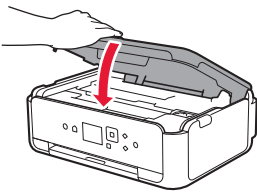
- 1 เอาวัสดุห่อหุ้ม (เช่น เทปสีส้มและฟิล์มป้องกันบน LCD) ด้านนอกเครื่องพิมพ์ออก
- 2 ใช้นิ้วเกี่ยวรอยเว้าทั้งสองด้านของเครื่องพิมพ์ และเปิดหน่วยการสแกน/ฝาครอบ



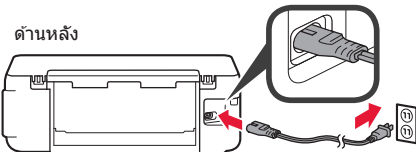
- 3 เอาเทปสีส้มและวัสดุป้องกันออกและทิ้งไป



- 4 ปิดหน่วยการสแกน/ฝาครอบ

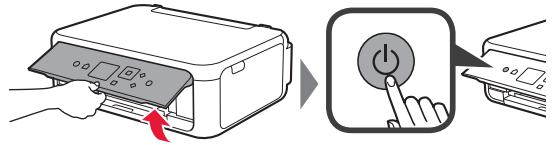


- 5 เชื่อมต่อสายไฟจากมุมเฉียงทางด้านหลัง

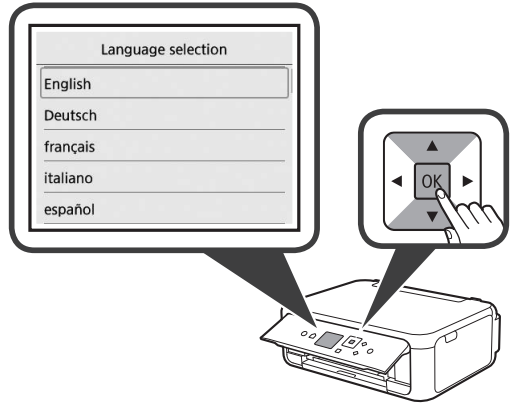


ห้ามเชื่อมต่อสายเคเบิลอื่นๆ นอกจากสายไฟ

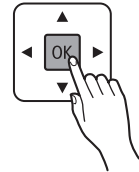
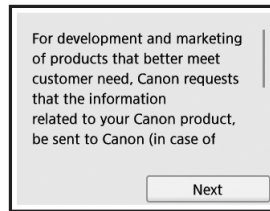
- 6 ยกแผงการทำงาน และกดปุ่ม พลังงาน



- 7 ใช้นปุ่ม ▲ หรือ ▼ เพื่อเลือกภาษา จากนั้นกดปุ่ม OK

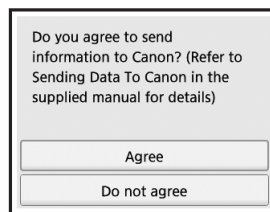


- 8 กดปุ่ม OK

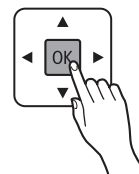
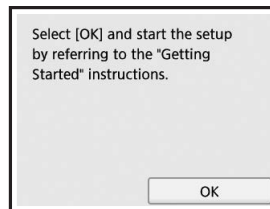


สำหรับรายละเอียดเกี่ยวกับข้อมูลที่จะส่งไปยัง Canon โปรดดู "การส่งข้อมูลไปยัง Canon" ใน ข้อมูลความปลอดภัยและสำคัญ

- 9 ใช้นปุ่ม ▲ หรือ ▼ เพื่อเลือก ยอมรับ(Agree) หรือ ไม่ยอมรับ(Do not agree) จากนั้นกดปุ่ม OK



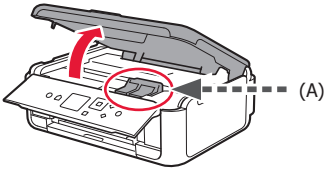
- 10 อ่านข้อความ และกดปุ่ม OK



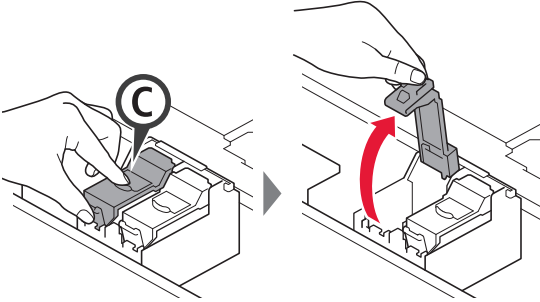
3. การติดตั้งคาร์ทริด FINE



- 1 เปิดหน่วยการสแกน/ฝาครอบ
⊘ อย่าสัมผัสตัวยัดคาร์ทริด FINE (A) จนกระทั่งหยุด

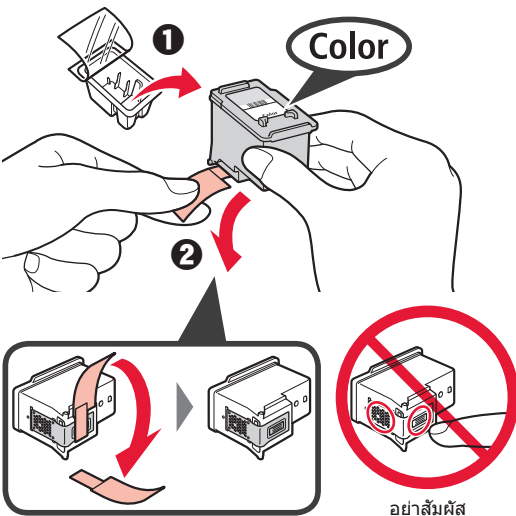


- 2 บีบและเปิดฝาครอบล็อกคาร์ทริดหมึกทางด้านซ้าย ©



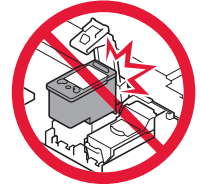
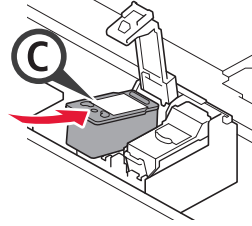
ติดตั้งคาร์ทริด FINE สี © ที่ทางด้านซ้าย และคาร์ทริด FINE สีดำ ๒ ที่ทางด้านขวา

- 3 1 นำคาร์ทริด FINE สีออกจากแพคเกจ
2 เอาเทปป้องกันออก



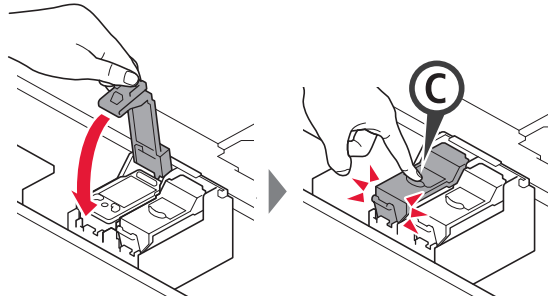
โปรดระวังหมึกบนเทปป้องกัน

- 4 ติดตั้งคาร์ทริด FINE สีสันตัวยัดคาร์ทริด FINE ทางด้านซ้าย ©

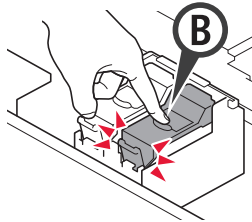


อย่าให้กระทบแท่งกับบริเวณโดยรอบ

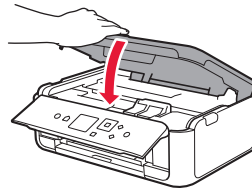
- 5 กดลง © ในฝาครอบล็อกคาร์ทริดหมึกให้แน่นจนกระทั่งล็อกเข้าที่เพื่อปิดอย่างสมบูรณ์



- 6 ทำซ้ำในขั้นตอนที่ 2 ถึง 5 และติดตั้งคาร์ทริด FINE สีดำ เช่นเดียวกันในด้านขวา



- 7 ปิดหน่วยการสแกน/ฝาครอบ

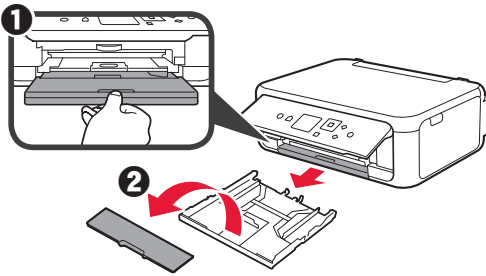


หากข้อความระบุข้อผิดพลาดปรากฏขึ้นบนหน้าจอ โปรดแน่ใจว่าคาร์ทริด FINE ได้รับการติดตั้งอย่างถูกต้อง

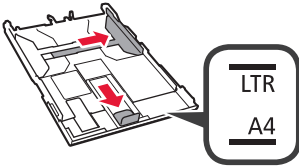
4. การป้อนกระดาษ



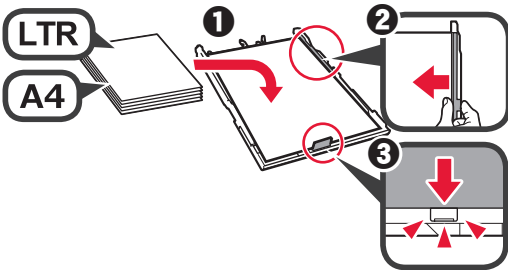
- 1 1 ดึงกลั๊กกระดาษออกมา
- 2 เอาฝาครอบกลั๊กกระดาษออก



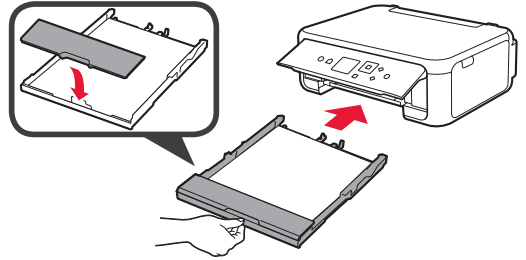
- 2 เปิดแถบกำหนดแนวกระดาษ จากนั้นจัดแถบกำหนดแนวด้านหน้าให้ตรงกับเครื่องหมาย LTR หรือ A4



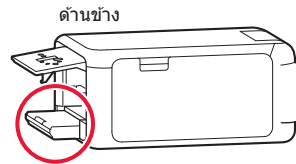
- 3 1 ป้อนกระดาษธรรมดาขนาด LTR หรือ A4 โดยให้ด้านที่จะพิมพ์คว่ำลง
- 2 เลื่อนแถบกำหนดแนวกระดาษด้านขวาเพื่อจัดขอบของกองกระดาษให้ตรงกัน
- 3 จัดกองกระดาษด้วยแถบกำหนดแนวกระดาษด้านหน้า



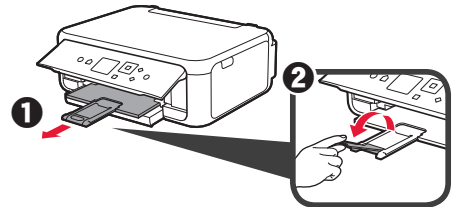
- 4 แบนฝาครอบกลั๊กกระดาษ และใส่กลั๊กกระดาษ



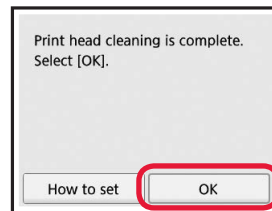
ภาพต่อไปนี้จะแสดงถึงสภาพหลังจากได้ใส่กลั๊กกระดาษเข้าไปแล้ว



- 5 1 ดึงเทรย์ออกกระดาษออกมา
- 2 เปิดส่วนขยายของเทรย์ออกกระดาษ



- 6 หากหน้าจอตั้งต่อไปนี้ปรากฏขึ้น ให้เลือก OK ด้วยปุ่ม ◀ หรือ ▶ จากนั้นให้กดปุ่ม OK



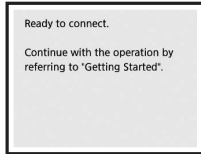
5. การจัดเตรียมสำหรับการเชื่อมต่อ

ในคำอธิบายต่อไปนี้ อุปกรณ์สมาร์ทโฟนและแท็บเล็ตตามที่บรรยายไว้รวมอยู่ในสมาร์ทโฟน

1 กดปุ่ม OK



2 ตรวจสอบให้แน่ใจว่าหน้าจอต่อไปนี้ปรากฏขึ้น

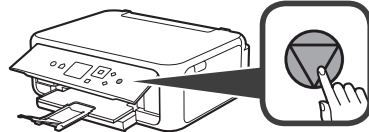


จากนี้ต่อไป ดำเนินขั้นตอนตามวิธีการใช้งานเครื่องพิมพ์

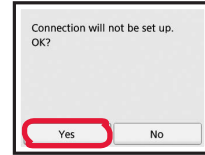
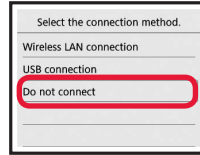
- ใช้เครื่องพิมพ์โดยการเชื่อมต่อกับคอมพิวเตอร์เท่านั้นหรือเชื่อมต่อกับทั้งคอมพิวเตอร์และสมาร์ทโฟน
 - ➔ "6-A. การเชื่อมต่อกับคอมพิวเตอร์"
- ใช้เครื่องพิมพ์โดยการเชื่อมต่อกับสมาร์ทโฟนเท่านั้น
 - ➔ "6-B. การเชื่อมต่อกับสมาร์ทโฟน" ในหน้า 6
- ใช้เครื่องพิมพ์โดยไม่เชื่อมต่อกับคอมพิวเตอร์หรือสมาร์ทโฟน
 - ➔ "ใช้เครื่องพิมพ์เท่านั้น"

ใช้เครื่องพิมพ์เท่านั้น

1 กดปุ่ม Stop บนเครื่องพิมพ์



2 เลือก **อย่าเชื่อมต่อ (Do not connect)** > **ใช่ (Yes)** ตามลำดับนี้ด้วยปุ่ม ▲, ▼, ◀ หรือ ▶ จากนั้นกดปุ่ม OK



การตั้งค่าเสร็จสมบูรณ์ในตอนนี้

6-A. การเชื่อมต่อกับคอมพิวเตอร์



คุณจะต้องตั้งค่าการเชื่อมต่อสำหรับคอมพิวเตอร์แต่ละเครื่อง ดำเนินการตั้งค่าตั้งแต่ขั้นตอนที่ 1 สำหรับคอมพิวเตอร์แต่ละเครื่อง

1 เริ่มต้นไฟล์การติดตั้งด้วยวิธีการ **A** หรือวิธีการ **B**

A การดาวน์โหลดจากอินเทอร์เน็ต

1 เปิดเว็บเบราว์เซอร์ (e ฯลฯ) บนเครื่องคอมพิวเตอร์ของคุณ

2 กรอก URL ต่อไปนี้ เพื่อเข้าสู่เว็บไซต์ Canon

<http://ij.start.canon>



3 เลือก **ตั้งค่า**



4 ใส่ชื่อรุ่นเครื่องพิมพ์ของคุณ และคลิก **ตกลง**



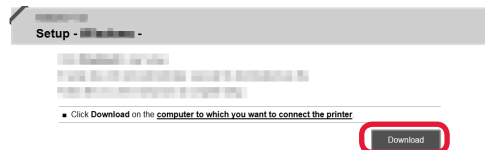
คุณสามารถเลือกชื่อรุ่นเครื่องพิมพ์ได้จากรายการนี้

5 คลิก **ตั้งค่า**



การดำเนินการสำหรับ Windows และ Mac OS แสดงไว้ด้านล่าง หากคุณใช้งานคอมพิวเตอร์ด้วยระบบปฏิบัติการอื่นๆ นอกเหนือจาก Windows หรือ Mac OS เช่น Chrome OS ให้ทำการตั้งค่าตามคำแนะนำบนหน้าจอ

6 คลิก **ดาวน์โหลด** และดาวน์โหลดไฟล์การติดตั้ง



7 เรียกใช้ไฟล์ที่ดาวน์โหลด

ดำเนินการต่อตามขั้นตอนที่ 2 ในหน้าถัดไป

B ไข Setup CD-ROM (Windows เท่านั้น)

1 โหลด Setup CD-ROM ในคอมพิวเตอร์ของคุณ

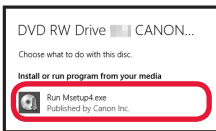


■ เมื่อใช้งาน Windows 10 หรือ Windows 8.1:

2 เมื่อมีข้อความต่อไปนี้ปรากฏขึ้นทางด้านขวาของคอมพิวเตอร์ของคุณ ให้คลิกที่ข้อความนั้น



3 หากหน้าจอต่อไปนี้ปรากฏขึ้น ให้คลิก **เรียกใช้ Msetup4.exe (Run Msetup4.exe)**



4 หากกล่องข้อความ การควบคุมบัญชีผู้ใช้ (User Account Control) ปรากฏขึ้น ให้คลิก **ใช่ (Yes)**

เมื่อข้อความนี้ไม่ปรากฏ (หรือหายไป)

1. คลิก **File Explorer** บนแถบงาน



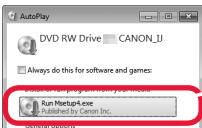
2. คลิก **พีซีเครื่องนี้ (This PC)** ทางด้านซ้ายของหน้าต่างที่เปิดอยู่

3. ดับเบิลคลิกไอคอน **CD-ROM** ทางด้านขวาของหน้าต่าง หากเนื้อหาของ CD-ROM ปรากฏขึ้น ให้ดับเบิลคลิก **Msetup4.exe**

4. ปฏิบัติตามขั้นตอน 4

■ เมื่อใช้งาน Windows 7:

2 เมื่อหน้าจอ **เล่นอัตโนมัติ (AutoPlay)** ปรากฏขึ้น ให้คลิก **เรียกใช้ Msetup4.exe (Run Msetup4.exe)**



3 หากกล่องข้อความ การควบคุมบัญชีผู้ใช้ (User Account Control) ปรากฏขึ้น ให้คลิก **ดำเนินการต่อ (Continue)**

เมื่อหน้าจอ **เล่นอัตโนมัติ (AutoPlay)** ไม่ได้ปรากฏขึ้น

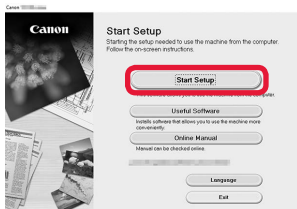
1. คลิก **คอมพิวเตอร์ (Computer)** จากเมนูเริ่มต้น

2. ดับเบิลคลิกไอคอน **CD-ROM** ทางด้านขวาของหน้าต่างที่เปิดอยู่

หากเนื้อหาของ CD-ROM ปรากฏขึ้น ให้ดับเบิลคลิก **Msetup4.exe**

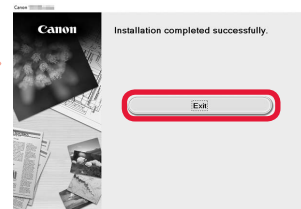
ปฏิบัติตามขั้นตอนที่ 2 เพื่อดำเนินการต่อ

2 คลิก **เริ่มต้นการตั้งค่า (Start Setup)**



ปฏิบัติตามคำแนะนำบนหน้าจอ เพื่อดำเนินการตั้งค่า

หากหน้าจอต่อไปนี้ปรากฏขึ้น คลิก **จบการทำงาน (Exit)**



การเชื่อมต่อกับคอมพิวเตอร์เสร็จสมบูรณ์ในตอนนี้ คุณสามารถพิมพ์จากคอมพิวเตอร์ของคุณ

6-B. การเชื่อมต่อกับสมาร์ทโฟน



คุณจะต้องตั้งค่าการเชื่อมต่อสำหรับสมาร์ทโฟนแต่ละเครื่อง ดำเนินการตั้งค่าตั้งแต่ขั้นตอนที่ 1 สำหรับสมาร์ทโฟนในแต่ละเครื่อง

การเตรียม

- เปิด Wi-Fi บนสมาร์ทโฟนของคุณ
- หากคุณมีเราเตอร์แบบไร้สาย เชื่อมต่อสมาร์ทโฟนเข้ากับเราเตอร์แบบไร้สายที่คุณต้องการเชื่อมต่อกับเครื่องพิมพ์
- * สำหรับการดำเนินการ โปรดดูคู่มือของสมาร์ทโฟนและเราเตอร์แบบไร้สาย หรือติดต่อผู้ผลิต

1 ติดตั้งแอปพลิเคชันซอฟต์แวร์ Canon PRINT Inkjet/SELPHY ในสมาร์ทโฟนของคุณ



iOS : ค้นหา "Canon PRINT" ใน App Store

Android : ค้นหา "Canon PRINT" ใน Google Play

หรือเข้าถึงเว็บไซต์ของ Canon โดยการสแกนรหัส QR



* คุณอาจไม่สามารถเชื่อมต่อสมาร์ทโฟนของคุณกับอินเทอร์เน็ตแบบไร้สาย ในขณะที่กำลังเชื่อมต่อเครื่องพิมพ์กับสมาร์ทโฟนโดยตรง ในกรณีนั้น คุณอาจเสียค่าใช้จ่ายขึ้นอยู่กับสัญญากับผู้ให้บริการของคุณ

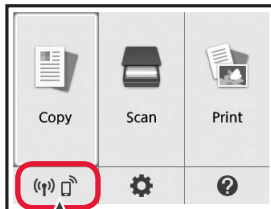
* สูงสุด 5 อุปกรณ์สามารถเชื่อมต่อกับเครื่องพิมพ์ผ่านการเชื่อมต่อ LAN แบบไร้สายโดยตรง

2 ตรวจสอบจอแสดงผลบนเครื่องพิมพ์

หน้าจอจะปิดลงเมื่อไม่มีการดำเนินการประมาณ 10 นาที กดปุ่มใดปุ่มหนึ่งบนแผงการทำงาน (ยกเว้นปุ่ม พลังงาน) เพื่อแสดงหน้าจอ

- หากหน้าจอต่อไปนี้ปรากฏขึ้น: ตรวจสอบไอคอนทางด้านล่างซ้าย จากนั้นดำเนินการตาม

A หรือ **B**



ไอคอนต่อไปนี้ปรากฏขึ้น (เครื่องพิมพ์ได้เชื่อมต่อไปยังเครือข่าย)

(Wi-Fi)

ใช่

- หากหน้าจอต่อไปนี้ปรากฏขึ้น: ดำเนินการตาม **B**

Ready to connect.
Continue with the operation by referring to "Getting Started".

ไม่ใช่ (ดำเนินการตาม **B**)

หาก (Wi-Fi) ปรากฏขึ้น เครื่องพิมพ์ไม่สามารถสื่อสารโดยการเชื่อมต่อ LAN แบบไร้สายได้ สำหรับรายละเอียด โปรดเข้าถึง "http://ij.start.canon" ดู คำถามที่ถามบ่อย

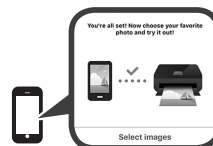
A **iOS** **Android**

1 แตะแอปพลิเคชันซอฟต์แวร์ที่ติดตั้ง



2 ปฏิบัติตามคำแนะนำบนหน้าจอเพื่อลงทะเบียนเครื่องพิมพ์

3 ตรวจสอบให้แน่ใจว่าหน้าจอต่อไปนี้ปรากฏขึ้น



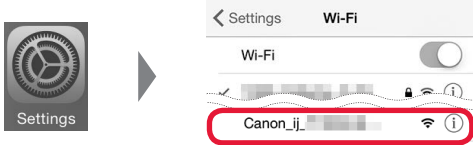
การเชื่อมต่อกับสมาร์ทโฟนของคุณเสร็จสมบูรณ์ในตอนนี้ คุณสามารถพิมพ์จากสมาร์ทโฟนของคุณ

เพื่อพิมพ์ภาพถ่าย ให้ป้อนกระดาษภาพถ่าย ดำเนินการตาม "การป้อนกระดาษภาพถ่าย" ในหน้า 8

B ขั้นตอนด้านล่างนี้แตกต่างกันไปขึ้นอยู่กับ iOS หรือ Android เลือกระบบปฏิบัติการของคุณและดำเนินการตามขั้นตอน

iOS

- 1 แตะ การตั้งค่า(Settings) บนหน้าจอหลักของสมาร์ตโฟนของคุณ จากนั้นแตะ **Canon_ij_XXXX** ในการตั้งค่า Wi-Fi



หาก **Canon_ij_XXXX** ไม่ได้ปรากฏในรายการ โปรดดู "การเตรียมความพร้อมของเครื่องพิมพ์" ด้านล่างเพื่อใช้งานเครื่องพิมพ์ จากนั้นทำซ้ำขั้นตอน 1

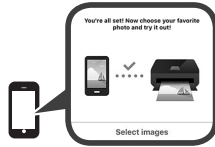
- 2 แตะแอปพลิเคชันซอฟต์แวร์ที่ติดตั้ง



- 3 ปฏิบัติตามคำแนะนำบนหน้าจอเพื่อลงทะเบียนเครื่องพิมพ์

ปฏิบัติตามคำแนะนำบนหน้าจอเพื่อดำเนินการตั้งค่า หากคุณเลือก **เลือกวิธีการเชื่อมต่ออัตโนมัติ (แนะนำ) (Auto Select Conn. Method (recommended))** บนหน้าจอการเลือกวิธีการเชื่อมต่อ จะเลือกวิธีการเชื่อมต่อที่เหมาะสมโดยอัตโนมัติตามสภาพแวดล้อมของคุณ

- 4 ตรวจสอบให้แน่ใจว่าหน้าจอทางด้านขวาปรากฏขึ้น



Android

- 1 แตะแอปพลิเคชันซอฟต์แวร์ที่ติดตั้ง



- 2 ปฏิบัติตามคำแนะนำบนหน้าจอเพื่อลงทะเบียนเครื่องพิมพ์

หากข้อความที่ว่า "ไม่ได้ลงทะเบียนเครื่องพิมพ์ทำการตั้งค่าเครื่องพิมพ์หรือไม่(Printer is not registered. Perform printer setup?)" ไม่ได้ปรากฏขึ้น โปรดดู "การเตรียมความพร้อมของเครื่องพิมพ์" ด้านล่างเพื่อใช้งานเครื่องพิมพ์ จากนั้นโปรดรอสักครู่จนกระทั่งข้อความปรากฏขึ้น

ปฏิบัติตามคำแนะนำบนหน้าจอเพื่อดำเนินการตั้งค่า

- เลือกวิธีการเชื่อมต่อที่เหมาะสมตามสภาพแวดล้อมของคุณ
- หากมีชื่อเครื่องพิมพ์สองชื่อปรากฏขึ้นบนหน้าจอ **ลงทะเบียนเครื่องพิมพ์(Register Printer)** ตามที่แสดงด้านล่าง ให้เลือก A) TS5100 series (xxx.xxx.xxx.xxx) B) Direct-xxxx-TS5100series

- 3 ตรวจสอบให้แน่ใจว่าหน้าจอทางด้านขวาปรากฏขึ้น

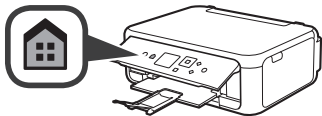


การเชื่อมต่อกับสมาร์ตโฟนของคุณเสร็จสมบูรณ์ในตอนนี้ คุณสามารถพิมพ์จากสมาร์ตโฟนของคุณ

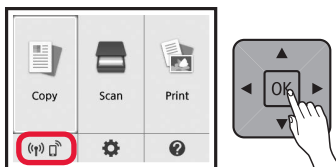
เพื่อพิมพ์ภาพถ่าย ให้ป้อนกระดาษภาพถ่าย ดำเนินการตาม "การป้อนกระดาษภาพถ่าย" ในหน้า 8

การเตรียมความพร้อมของเครื่องพิมพ์

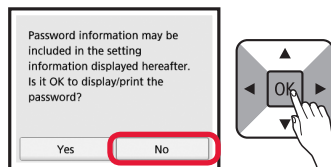
- 1 กดปุ่ม หน้าแรก บนเครื่องพิมพ์



- 2 ใช้ปุ่ม ▲, ▼, ◀ หรือ ▶ เพื่อเลือกไอคอนทางด้านซ้ายของหน้าจอหน้าแรก จากนั้นกดปุ่ม **OK**



- 3 หากหน้าจอต่อไปนี้ปรากฏขึ้น ให้เลือก **ไม่ใช่(No)** ด้วยปุ่ม ◀ หรือ ▶ จากนั้นให้กดปุ่ม **OK**



- 4 ใช้ปุ่ม ▲, ▼, ◀ หรือ ▶ เพื่อเลือก **ตั้งค่า LAN(LAN settings) > LAN แบบไร้สาย(Wireless LAN) > ตั้งค่า LAN แบบไร้สาย(Wireless LAN setup) > เชื่อมต่อไร้สายแบบง่าย(Easy wireless connect)** ตามลำดับ จากนั้นกดปุ่ม **OK**

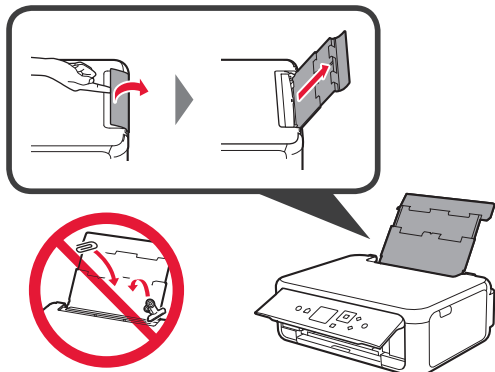
- 5 ใช้ปุ่ม ◀ หรือ ▶ เพื่อเลือก **ใช่(Yes)** จากนั้นกดปุ่ม **OK**

- 6 กลับไปยังการดำเนินการของสมาร์ตโฟนของคุณ

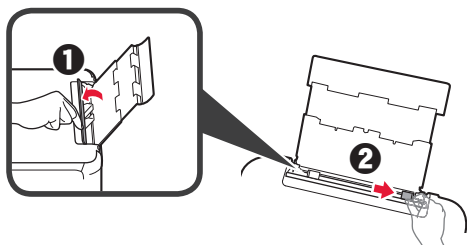
การป้อนกระดาษภาพถ่าย

วางกระดาษพิมพ์ภาพถ่ายลงในเทรย์ด้านหลัง

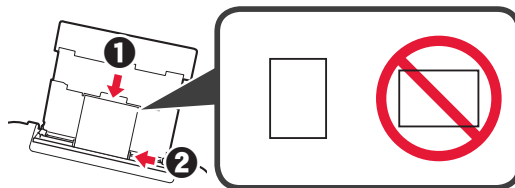
- 1 เปิดฝาครอบเทรย์ด้านหลัง และดึงฐานรองกระดาษออกมา



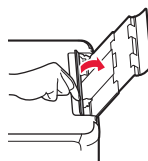
- 2 1 เปิดฝาครอบช่องป้อนกระดาษ
2 เลื่อนแถบกำหนดแนวกระดาษด้านขวาไปจนสุด



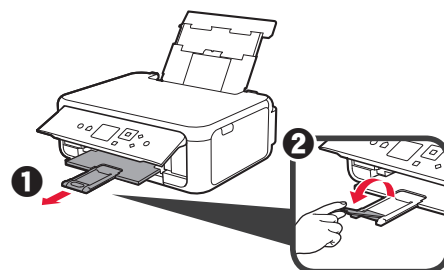
- 3 1 ป้อนกระดาษภาพถ่ายหลายแผ่นโดยให้หงายด้านที่จะพิมพ์ขึ้น
2 เลื่อนแถบกำหนดแนวกระดาษด้านขวาเพื่อจัดขอบของกองกระดาษให้ตรงกัน



- 4 ปิดฝาครอบช่องป้อนกระดาษ อ่านข้อความบนหน้าจอของเครื่องพิมพ์ และลงทะเบียนข้อมูลของกระดาษที่ป้อน



- 5 1 ดึงเทรย์ออกกระดาษออกมา
2 เปิดส่วนขยายของเทรย์ออกกระดาษ



การทำสำเนาภาพถ่าย

คุณสามารถสแกนภาพถ่ายที่พิมพ์ และพิมพ์ออกมา คุณยังสามารถสแกนภาพถ่ายหลายภาพ และพิมพ์ออกมาในครั้งเดียว

- 1 ตรวจสอบว่าเครื่องพิมพ์เปิดอยู่
- 2 ป้อนกระดาษภาพถ่ายหลายแผ่น
- 3 ใช้ปุ่ม ▲, ▼, ◀ หรือ ▶ เพื่อเลือก ทำสำเนา (Copy) บนหน้าจอหน้าแรก จากนั้นกดปุ่ม OK
- 4 ใช้ปุ่ม ▲ หรือ ▼ เพื่อเลือก ทำสำเนาภาพ(Photo copy) จากนั้นกดปุ่ม OK
- 5 อ่านข้อความ จากนั้นกดปุ่ม OK
- 6 ปฏิบัติตามคำแนะนำบนหน้าจอเพื่อวางภาพถ่ายที่พิมพ์บนกระจกแทนวาง จากนั้นกดปุ่ม OK

- 7 ระบุการตั้งค่าการพิมพ์ตามความจำเป็น

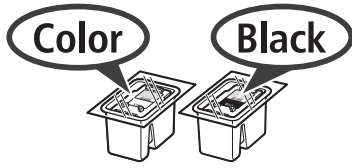


- 8 กดปุ่ม สี สำหรับการทำสำเนาสี
กดปุ่ม สีดำ สำหรับการทำสำเนาขาวดำ
เครื่องพิมพ์เริ่มการพิมพ์

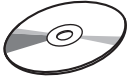
1. Memeriksa Item yang Tersedia



□ Kabel listrik



□ Kartrij FINE



□ Setup CD-ROM untuk PC Windows

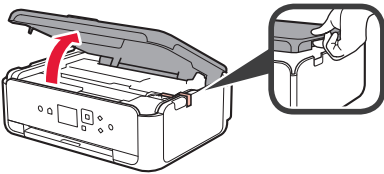
□ Keamanan dan Informasi Penting

□ Mari Memulai (petunjuk ini)

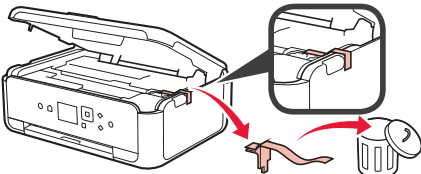
2. Melepaskan Material Kemasan / Menyalakan Pencetak



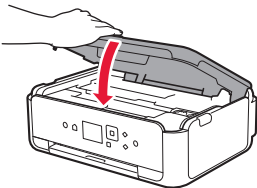
- 1 Lepaskan material kemasan (misalnya pita oranye dan lapisan pelindung pada LCD) dari bagian luar pencetak.
- 2 Kait bagian berongga pada kedua sisi pencetak dengan jari Anda dan buka unit pemindaian / penutup.



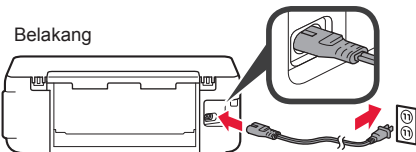
- 3 Lepaskan pita oranye dan material pelindung kemudian buang.



- 4 Tutup unit pemindaian / penutup.

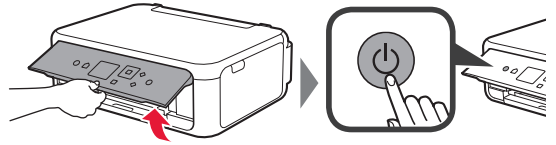


- 5 Hubungkan kabel listrik secara diagonal dari belakang.

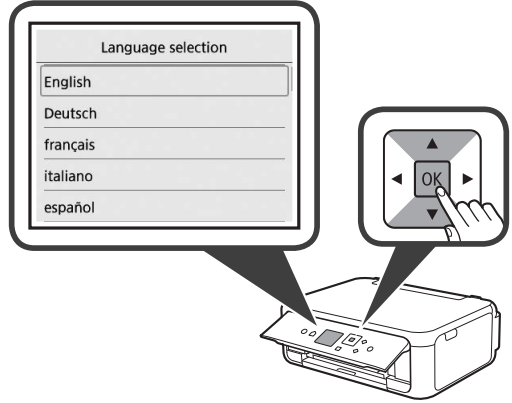


Jangan hubungkan kabel apa pun selain kabel listrik terlebih dahulu.

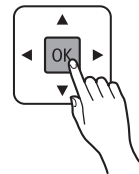
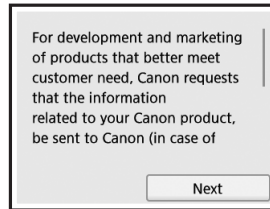
- 6 Angkat panel operasi dan tekan tombol **DAYA**.



- 7 Gunakan tombol ▲ atau ▼ untuk memilih bahasa, kemudian tekan tombol **OK**.

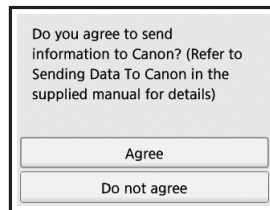


- 8 Tekan tombol **OK**.

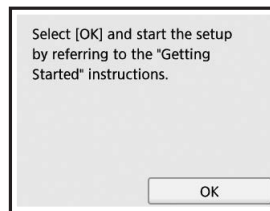


Untuk detail tentang informasi yang dikirim ke Canon, rujuk ke "Mengirim Data Ke Canon" dalam **Keamanan dan Informasi Penting**.

- 9 Gunakan tombol ▲ atau ▼ untuk memilih **Setuju (Agree)** atau **Tidak setuju (Do not agree)**, kemudian tekan tombol **OK**.



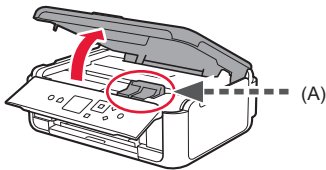
- 10 Baca pesan dan tekan tombol **OK**.



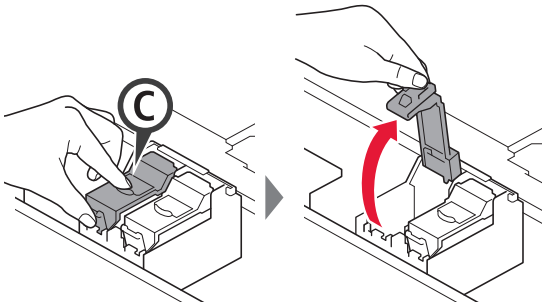
3. Memasang Kartrij FINE



- 1 Buka unit pemindaian / penutup.
⊘ Jangan menyentuh penahan kartrij FINE (A) sebelum berhenti.

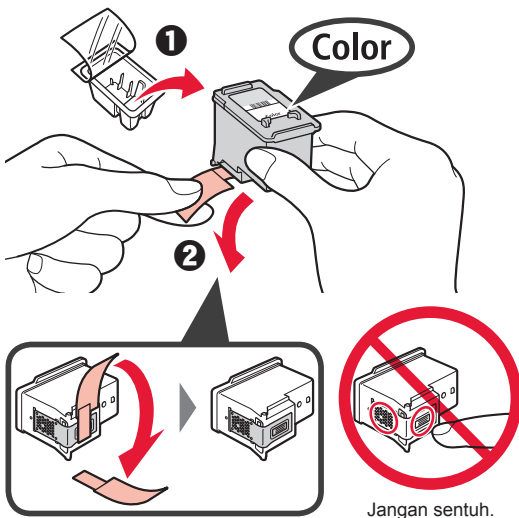


- 2 Jepit dan buka penutup pengunci kartrij tinta pada sebelah kiri ©.



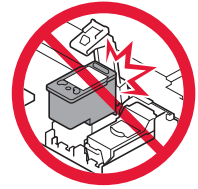
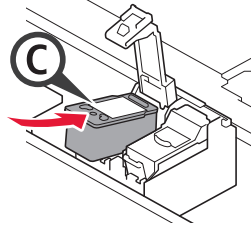
Pasang Kartrij FINE Warna © di sebelah kiri dan Kartrij FINE Hitam © di sebelah kanan.

- 3 ① Keluarkan Kartrij FINE Warna dari dalam kemasan.
② Lepaskan pita pelindung.



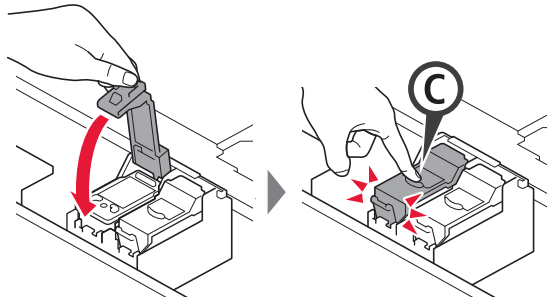
Hati-hati dengan tinta pada pita pelindung.

- 4 Pasang Kartrij FINE Warna pada penahan kartrij FINE di sebelah kiri ©.

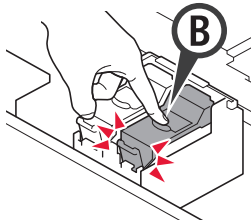


Jangan benturkan dengan bagian sekelilingnya.

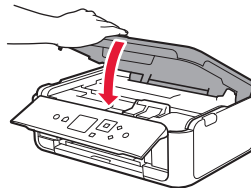
- 5 Tekan © pada penutup pengunci kartrij tinta dengan mantap sampai pas ke tempatnya untuk menutup sepenuhnya.



- 6 Ulangi langkah 2 sampai 5 dan pasang juga Kartrij FINE Hitam di sebelah kanan.



- 7 Tutup unit pemindaian / penutup.

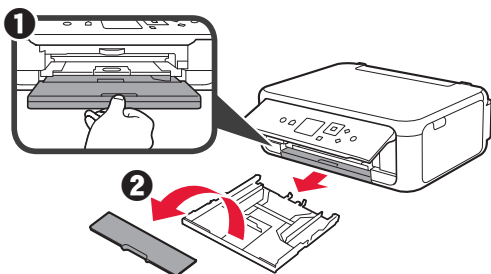


Jika pesan kesalahan muncul pada layar, pastikan Kartrij FINE telah dipasang dengan benar.

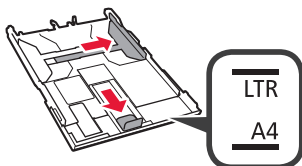
4. Memuatkan Kertas



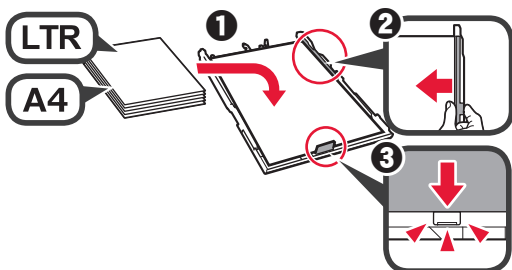
- 1 **1** Tarik keluar kotak kertas.
- 2 **2** Lepaskan penutup kotak kertas.



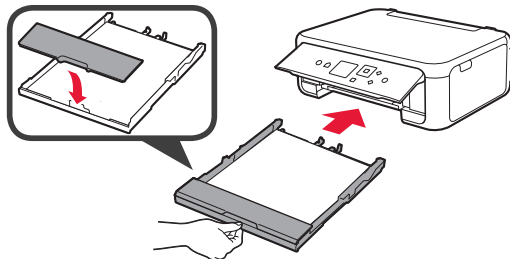
- 2 **Buka pemandu kertas, kemudian jajarkan bagian depan pemandu dengan tanda LTR atau A4.**



- 3 **1** Muatkan kertas biasa ukuran LTR atau A4 dengan sisi cetak menghadap ke bawah.
- 2 **2** Geser pemandu kertas sebelah kanan untuk mengepaskannya dengan sisi tumpukan kertas.
- 3 **3** Jajarkan tumpukan kertas dengan pemandu kertas di bagian depannya.

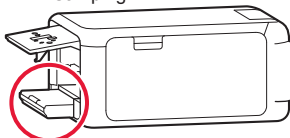


- 4 **Pasang penutup kotak kertas dan masukkan kotak kertas.**

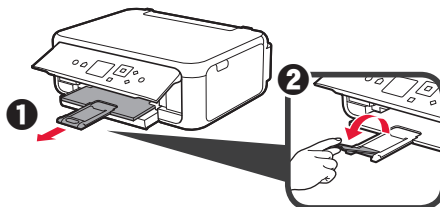


Gambar berikut ini menunjukkan kondisi setelah kotak kertas dimasukkan.

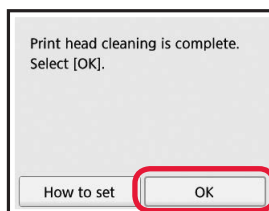
Samping



- 5 **1** Tarik keluar tatakan keluaran kertas.
- 2 **2** Buka perpanjangan tatakan keluaran.



- 6 **Jika layar berikut ini muncul, pilih OK dengan tombol ◀ atau ▶, kemudian tekan tombol OK.**



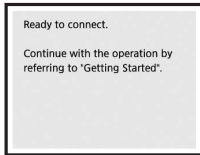
5. Menyiapkan untuk Koneksi

Dalam penjelasan berikut ini, perangkat ponsel pintar dan tablet secara kolektif disebut sebagai ponsel pintar.

1 Tekan tombol OK.



2 Pastikan bahwa layar berikut ini muncul.

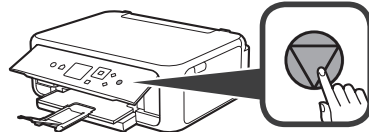


Mulai dari sini, lanjutkan ke langkah yang sesuai dengan cara Anda menggunakan pencetak.

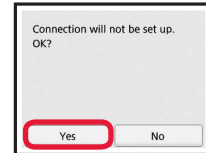
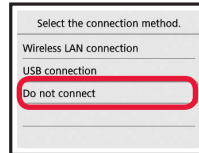
- Untuk menggunakan pencetak dengan menghubungkannya ke komputer saja atau ke komputer dan ponsel pintar ➔ "6-A. Menghubungkan ke Komputer"
- Untuk menggunakan pencetak dengan menghubungkannya ke ponsel pintar saja ➔ "6-B. Menghubungkan ke Ponsel Pintar" pada halaman 6
- Untuk menggunakan pencetak tanpa menghubungkannya ke komputer atau ponsel pintar ➔ "Menggunakan Pencetak Saja"

Menggunakan Pencetak Saja

1 Tekan tombol Stop pada pencetak.



2 Pilih Jangan sambungkan (Do not connect) > Ya (Yes) dalam urutan ini dengan tombol ▲, ▼, ◀, ▶, kemudian tekan tombol OK.



Pengesetan telah selesai.

6-A. Menghubungkan ke Komputer



Anda perlu melakukan pengesetan koneksi untuk setiap komputer. Lanjutkan dengan pengesetan dari langkah 1 untuk setiap komputer.

1 Jalankan berkas pengesetan baik untuk metode **A** maupun metode **B**.

A Mengunduh dari Internet

1 Buka browser web (e dll.) pada komputer Anda.

2 Masukkan URL berikut ini dan akses situs web Canon.

<http://ij.start.canon>



3 Pilih Mengeset.



4 Masukkan nama model pencetak Anda dan klik OK.



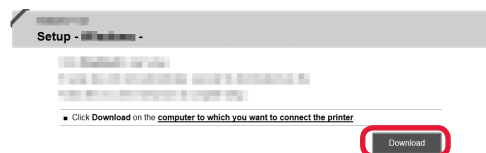
Anda dapat memilih nama model dari daftar.

5 Klik Pengesetan.



Prosedur untuk Windows dan Mac OS ditunjukkan di bawah ini. Jika Anda menggunakan komputer dengan OS selain Windows atau Mac OS, misalnya Chrome OS, lakukan pengesetan berdasarkan instruksi pada layar.

6 Klik Unduh dan unduh berkas pengesetan.



7 Jalankan berkas yang diunduh.

Lanjutkan ke langkah 2 pada halaman berikutnya untuk meneruskan.

B Menggunakan Setup CD-ROM (Hanya Windows)

1 Masukkan Setup CD-ROM ke komputer Anda.

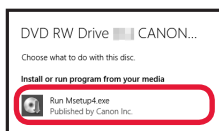


■ Ketika menggunakan Windows 10 atau Windows 8.1:

2 Ketika pesan berikut ini muncul pada sisi kanan layar komputer Anda, klik pesan tersebut.



3 Jika layar berikut ini muncul, klik **Jalankan Msetup4.exe(Run Msetup4.exe)**.



4 Jika kotak dialog **Kontrol Akun Pengguna(User Account Control)** muncul, klik **Ya(Yes)**.

Ketika Pesan Ini Tidak Muncul (atau Telah Menghilang)

1. Klik **File Explorer** pada taskbar.



2. Klik **PC ini(This PC)** pada sisi kiri jendela yang terbuka.

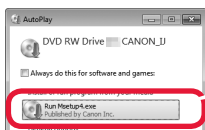
3. Klik dua kali ikon **CD-ROM** pada sisi kanan jendela.

Jika isi CD-ROM muncul, klik dua kali **Msetup4.exe**.

4. Lanjutkan ke langkah 4.

■ Ketika menggunakan Windows 7:

2 Ketika layar **AutoMain(AutoPlay)** muncul, klik **Jalankan Msetup4.exe(Run Msetup4.exe)**.



Ketika Layar **AutoMain(AutoPlay)** Tidak Muncul

1. Klik **Komputer(Computer)** dari menu mulai.

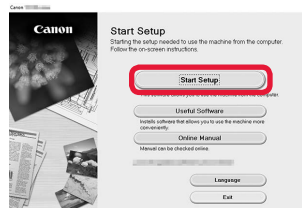
2. Klik dua kali ikon **CD-ROM** pada sisi kanan jendela yang terbuka.

Jika isi CD-ROM muncul, klik dua kali **Msetup4.exe**.

3 Jika kotak dialog **Kontrol Akun Pengguna (User Account Control)** muncul, klik **Lanjutkan(Continue)**.

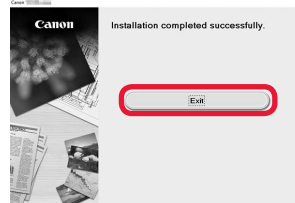
Lanjutkan ke langkah 2 untuk meneruskan.

2 Klik **Mulai Pengesetan(Start Setup)**.



Ikuti instruksi pada layar untuk melanjutkan pengesetan.

Jika layar berikut ini muncul, klik **Keluar(Exit)**.



Koneksi dengan komputer Anda telah selesai. Anda dapat mencetak dari komputer.

6-B. Menghubungkan ke Ponsel Pintar



Anda perlu melakukan pengesetan koneksi untuk setiap ponsel pintar. Lanjutkan dengan pengesetan dari langkah 1 untuk setiap ponsel pintar.

Persiapan

- Nyalakan Wi-Fi pada ponsel pintar Anda.
- Jika Anda memiliki perute nirkabel, hubungkan ponsel pintar Anda ke perute nirkabel yang ingin Anda hubungkan ke pencetak.
- * Untuk pengoperasian, rujuk ke petunjuk ponsel pintar dan perute nirkabel Anda atau hubungi produsennya.

1 Instal perangkat lunak aplikasi Canon PRINT Inkjet/SELPHY pada ponsel pintar Anda.



iOS : Cari "Canon PRINT" di App Store.

Android : Cari "Canon PRINT" di Google Play.

Atau akses situs web Canon dengan memindai kode QR.

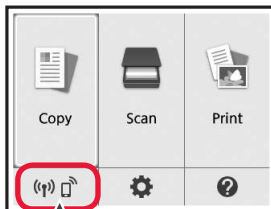


- * Anda tidak dapat menghubungkan ponsel pintar Anda ke Internet secara nirkabel selama menghubungkan pencetak ke ponsel pintar secara langsung. Dalam kasus tersebut, Anda mungkin dikenakan biaya tergantung pada kontrak Anda dengan penyedia layanan.
- * Maksimal 5 perangkat dapat dihubungkan ke pencetak melalui koneksi LAN nirkabel secara langsung.

2 Periksa tampilan pada pencetak.

Layar akan mati jika tidak dioperasikan selama sekitar 10 menit. Tekan salah satu tombol pada panel operasi (kecuali tombol **DAYA**) untuk menampilkan layar.

- Jika layar berikut ini muncul:
Periksa ikon pada bagian kiri bawah, kemudian lanjutkan ke **A** atau **B**.

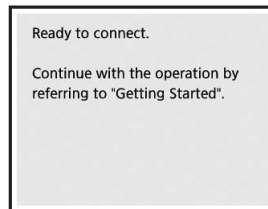


Ikon berikut ini muncul.
(Pencetak terhubung ke jaringan.)



YA

- Jika layar berikut ini muncul:
Lanjutkan ke **B**.



Tidak (Lanjutkan ke **B**.)

Jika (B) muncul, pencetak tidak dapat berkomunikasi dengan koneksi LAN nirkabel. Untuk detail, akses "<http://ij.start.canon>" untuk melihat **Pertanyaan yang Sering Diajukan**.

A **iOS** **Android**

1 Ketuk perangkat lunak aplikasi yang telah diinstal.



2 Ikuti instruksi pada layar untuk mendaftarkan pencetak.

3 Pastikan bahwa layar berikut ini muncul.



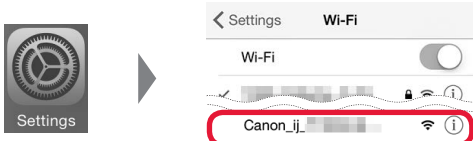
Koneksi dengan ponsel pintar Anda telah selesai. Anda dapat mencetak dari ponsel pintar.

Untuk mencetak foto, muatkan kertas foto. Lanjutkan ke "Memuatkan Kertas Foto" pada halaman 8.

- B** Prosedur di bawah ini berbeda tergantung pada iOS atau Android. Pilih sistem operasi Anda dan lanjutkan sesuai prosedurnya.

iOS

- 1 Ketuk **Pengaturan(Settings)** pada layar utama ponsel pintar Anda, dan ketuk **Canon_ij_XXXX** dalam setelan Wi-Fi.



Jika **Canon_ij_XXXX** tidak muncul pada daftar, lihat "Persiapan untuk Pencetak" di bawah ini untuk mengoperasikan pencetak, kemudian ulangi langkah 1.

- 2 Ketuk perangkat lunak aplikasi yang telah diinstal.

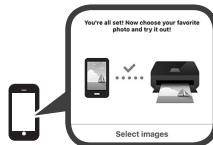


- 3 Ikuti instruksi pada layar untuk mendaftarkan pencetak.

Ikuti instruksi pada layar untuk melanjutkan pengesetan.

Jika Anda memilih **Pilih Metode Koneksi Scr Auto (dianjurkan)(Auto Select Conn. Method (recommended))** pada layar pemilihan metode koneksi, metode koneksi yang sesuai dipilih secara otomatis tergantung pada lingkungan Anda.

- 4 Pastikan bahwa layar di sebelah kanan muncul.



Android

- 1 Ketuk perangkat lunak aplikasi yang telah diinstal.



- 2 Ikuti instruksi pada layar untuk mendaftarkan pencetak.

Jika pesan yang mengatakan "**Pencetak tidak terdaftar. Laksanakan pengesetan pencetak? (Printer is not registered. Perform printer setup?)**" tidak muncul, lihat "Persiapan untuk Pencetak" di bawah ini untuk mengoperasikan pencetak, kemudian tunggu sebentar hingga pesan muncul.

Ikuti instruksi pada layar untuk melanjutkan pengesetan.

- Metode koneksi yang sesuai dipilih tergantung pada lingkungan Anda.
- Jika dua nama pencetak muncul pada layar **Daftarkan pencetak(Register Printer)** seperti yang ditunjukkan di bawah ini, pilih A.
A) TS5100 series (xxx.xxx.xxx.xxx)
B) Direct-xxxx-TS5100series

- 3 Pastikan bahwa layar di sebelah kanan muncul.

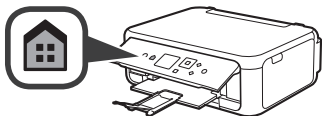


Koneksi dengan ponsel pintar Anda telah selesai. Anda dapat mencetak dari ponsel pintar.

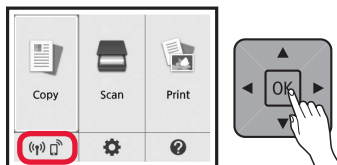
Untuk mencetak foto, muatkan kertas foto. Lanjutkan ke "Memuatkan Kertas Foto" pada halaman 8.

Persiapan untuk Pencetak

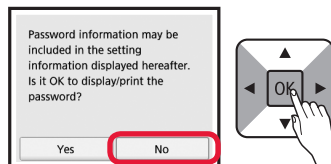
- 1 Tekan tombol **BERANDA** pada pencetak.



- 2 Gunakan tombol ▲, ▼, ◀, atau ▶ untuk memilih ikon pada bagian kiri bawah layar Beranda, kemudian tekan tombol **OK**.



- 3 Jika layar berikut ini muncul, pilih **Tidak(No)** dengan tombol ◀ atau ▶, kemudian tekan tombol **OK**.

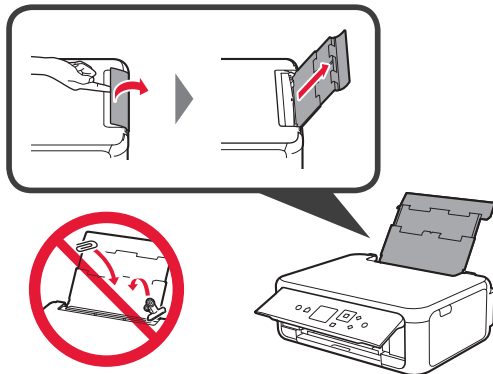


- 4 Gunakan tombol ▲, ▼, ◀, atau ▶ untuk memilih **Setelan LAN (LAN settings) > LAN Nirkabel (Wireless LAN) > Pengesetan LAN nirkabel (Wireless LAN setup) > Koneksi nirkabel mudah(Easy wireless connect)** secara berurutan, kemudian tekan tombol **OK**.
- 5 Gunakan tombol ◀ atau ▶ untuk memilih **Ya(Yes)**, kemudian tekan tombol **OK**.
- 6 Kembali ke pengoperasian ponsel pintar Anda.

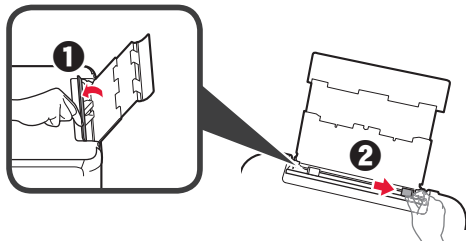
Memuatkan Kertas Foto

Muatkan kertas foto dalam tatakan belakang.

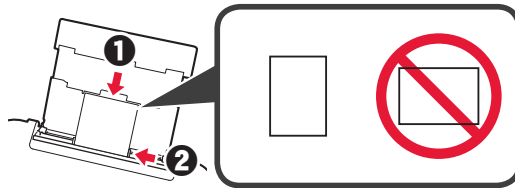
- 1 Buka penutup tatakan belakang dan tarik keluar pendukung kertas.



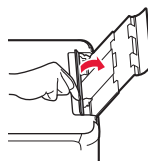
- 2
 - 1 Buka penutup slot penyaluran.
 - 2 Geser pemandu kertas sebelah kanan sampai ke ujung.



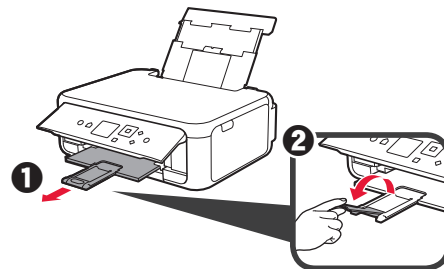
- 3
 - 1 Muatkan beberapa lembar kertas foto dengan sisi cetak menghadap ke atas.
 - 2 Geser pemandu kertas sebelah kanan untuk mengepaskannya dengan sisi tumpukan kertas.



- 4 Tutup penutup slot penyaluran. Baca pesan pada layar pencetak dan daftarkan informasi kertas yang dimuatkan.



- 5
 - 1 Tarik keluar tatakan keluaran kertas.
 - 2 Buka perpanjangan tatakan keluaran.



Menyalin Foto

Anda dapat memindai foto yang telah dicetak dan mencetaknya lagi. Anda juga dapat memindai beberapa foto dan mencetaknya sekaligus.

- 1 Pastikan pencetak telah dinyalakan.
- 2 Muatkan beberapa lembar kertas foto.
- 3 Gunakan tombol ▲, ▼, ◀, atau ▶ untuk memilih **Salin(Copy)** pada layar Beranda, kemudian tekan tombol **OK**.
- 4 Gunakan tombol ▲ atau ▼ untuk memilih **Salin foto(Photo copy)**, kemudian tekan tombol **OK**.
- 5 Baca pesan dan tekan tombol **OK**.
- 6 Ikuti instruksi pada layar untuk memuatkan foto yang telah dicetak pada kaca platen, kemudian tekan tombol **OK**.

- 7 Tentukan setelan cetak sesuai keperluan.

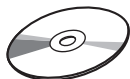


- 8 Tekan tombol **Warna** untuk penyalinan berwarna. Tekan tombol **Hitam** untuk penyalinan hitam putih. Pencetak mulai mencetak.

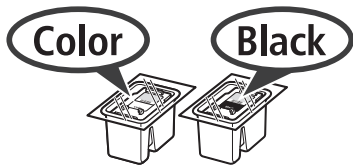
1. Kiểm tra các vật dụng kèm theo máy



□ Dây nguồn



□ CD-ROM cài đặt cho Windows PC



□ Hộp mực FINE

□ Thông tin an toàn và quan trọng

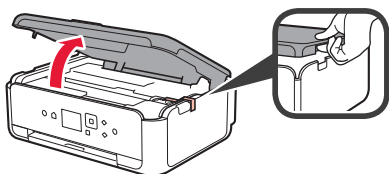
□ Hướng dẫn bắt đầu (sách hướng dẫn sử dụng này)

2. Tháo vật liệu đóng gói / Bật Máy in

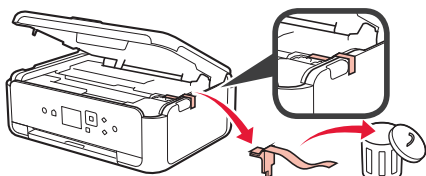


1 Tháo vật liệu đóng gói (như băng dính màu cam và phim bảo vệ trên màn hình LCD) ra khỏi phần bên ngoài của máy in.

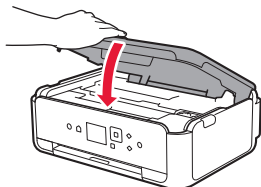
2 Dùng ngón tay móc vào hốc ở hai bên máy in và mở bộ quét / nắp.



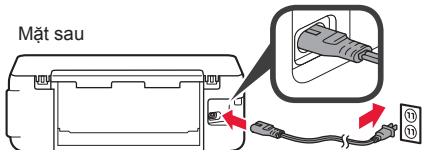
3 Tháo băng dính màu cam và vật liệu bảo vệ ra và bỏ đi.



4 Đóng bộ quét / nắp.

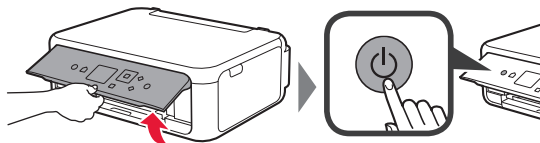


5 Kết nối nghiêng dây nguồn từ phía sau.

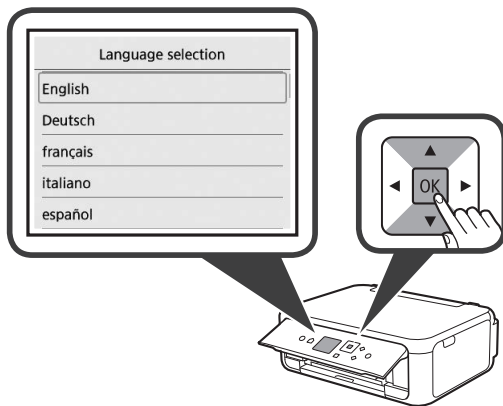


Không kết nối bất kỳ cáp nào ngoại trừ dây nguồn.

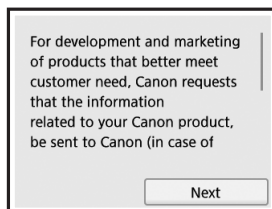
6 Nâng bảng thao tác lên và nhấn nút **BẬT**.



7 Sử dụng nút ▲ hoặc ▼ để chọn ngôn ngữ, rồi nhấn nút **OK**.

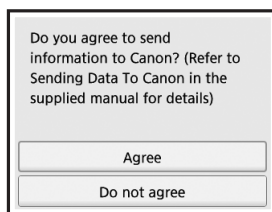


8 Nhấn nút **OK**.

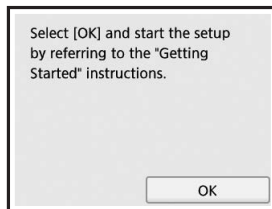


Để tìm hiểu chi tiết về thông tin đã gửi đến Canon, tham khảo "Gửi dữ liệu đến Canon" ở phần **Thông tin an toàn và quan trọng**.

9 Sử dụng nút ▲ hoặc ▼ để chọn **Đồng ý (Agree)** hoặc **Không đồng ý (Do not agree)**, rồi nhấn nút **OK**.



10 Đọc các thông báo và nhấn nút **OK**.

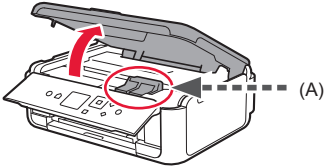


3. Lắp Hộp mực FINE

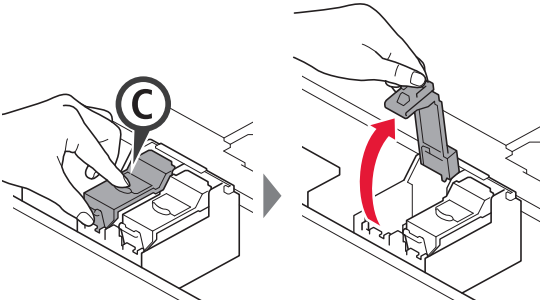


1 Mở bộ quét / nắp.

- ⊘ Không chạm vào khay chứa hộp mực FINE (A) cho tới khi khay dừng lại.

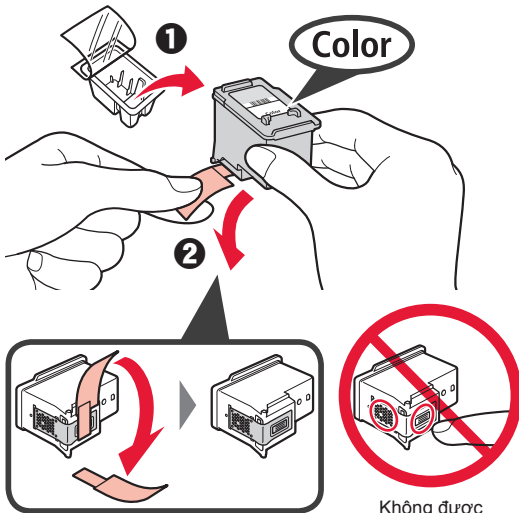


2 Kẹp và mở nắp khóa hộp mực ở phía bên trái ©.



Lắp hộp mực FINE Màu © ở phía bên trái và hộp mực FINE Đen © ở phía bên phải.

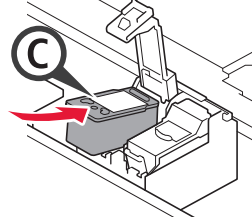
- #### 3
- 1 Lấy hộp mực FINE Màu ra khỏi gói.
 - 2 Gỡ băng bảo vệ ra.



Không được chạm vào.

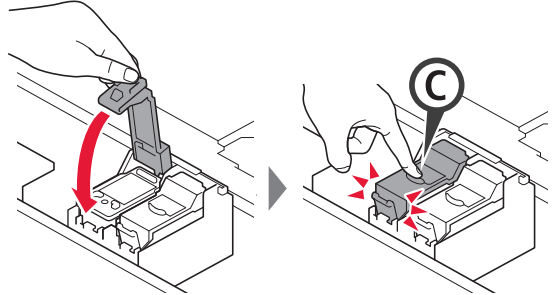
Cẩn thận mực trên băng bảo vệ.

4 Lắp hộp mực FINE Màu vào khay chứa hộp mực FINE ở phía bên trái ©.

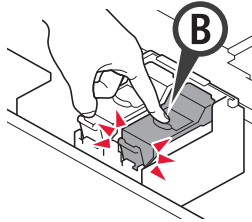


Không va mạnh hộp mực vào các bộ phận xung quanh.

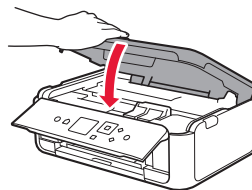
5 Ấn © ở trên nắp khóa hộp mực xuống cho đến khi đóng tách vào vị trí để đóng hoàn toàn nắp lại.



6 Lặp lại các bước từ 2 đến 5 và lắp hộp mực FINE Đen ở bên phải.



7 Đóng bộ quét / nắp.

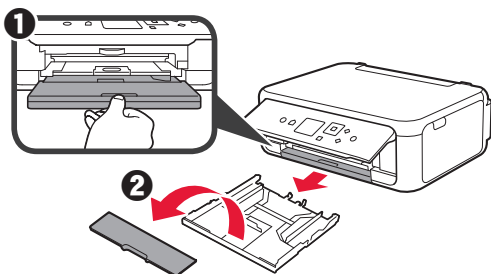


Nếu xuất hiện thông báo lỗi trên màn hình, đảm bảo rằng Hộp mực FINE được lắp chính xác.

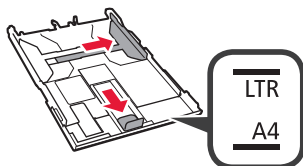
4. Nạp Giấy



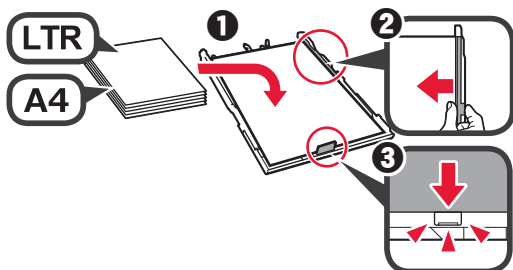
- 1 **1** Kéo cát-xét ra.
- 2 **2** Tháo nắp cát-xét.



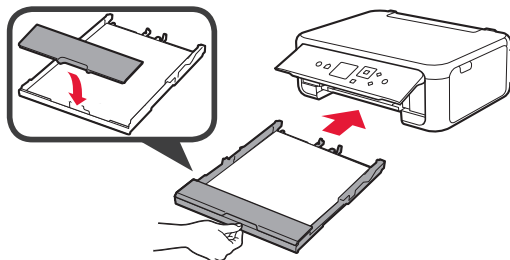
- 2 **1** Mở thanh dẫn giấy, rồi căn chỉnh thanh dẫn ở phía trước với dấu của A4 hoặc LTR.



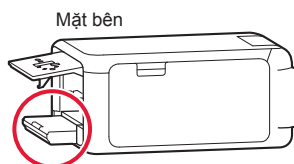
- 3 **1** Nạp giấy thường cỡ A4 hoặc LTR với mặt cần in úp xuống.
- 2 **2** Trượt thanh dẫn giấy bên phải để căn chỉnh thẳng với cạnh của chồng giấy.
- 3 **3** Căn chỉnh chồng giấy thẳng với thanh dẫn giấy ở phía trước.



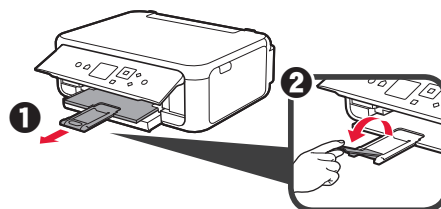
- 4 **1** Lắp nắp cát-xét và lắp cát-xét.



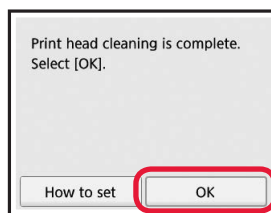
Hình dưới đây cho biết trạng thái sau khi đã lắp cát-xét.



- 5 **1** Kéo khay giấy ra ra.
- 2 **2** Mở phần mở rộng khay giấy ra.



- 6 **1** Nếu màn hình sau đây xuất hiện, chọn **OK** bằng nút ◀ hoặc ▶, rồi nhấn nút **OK**.



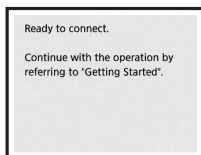
5. Chuẩn bị cho kết nối

Trong mô tả sau đây, các thiết bị smartphone và máy tính bằng được gọi chung là smartphone.

1 Nhấn nút **OK**.

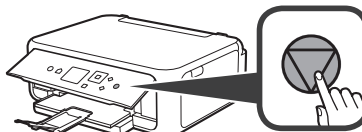


2 Đảm bảo màn hình sau đây xuất hiện.

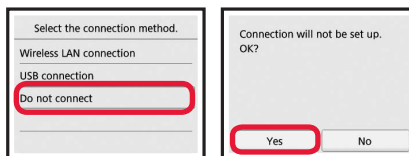


Chỉ sử dụng máy in

1 Nhấn nút **Dừng** trên máy in.



2 Chọn theo thứ tự **Không thể kết nối(Do not connect)** > **Có(Yes)** bằng nút **▲**, **▼**, **◀** hoặc **▶**, rồi nhấn nút **OK**.



Thiết lập đã hoàn tất.

Từ đây, tiếp tục thực hiện bước tùy theo cách bạn sử dụng máy in.

- **Sử dụng máy in bằng cách chỉ kết nối với máy tính hoặc kết nối với cả máy tính và smartphone**
➔ "6-A. Kết nối với máy tính"
- **Sử dụng máy in bằng cách chỉ kết nối với smartphone**
➔ "6-B. Kết nối với smartphone" ở trang 6
- **Sử dụng máy in mà không cần kết nối với máy tính hoặc smartphone**
➔ "Chỉ sử dụng máy in"

6-A. Kết nối với máy tính



Bạn cần thiết lập kết nối cho từng máy tính. Chuyển sang thiết lập từ bước 1 cho từng máy tính.

1 Thực hiện theo phương thức **A** hoặc **B** để chạy dữ liệu cài đặt.

A Tải xuống từ Internet

- 1 Mở trình duyệt web (e.v.v.) trên máy tính.
- 2 Nhập URL sau đây và truy cập trang web của Canon.

<http://ij.start.canon>



3 Chọn **Thiết lập**.



4 Nhập tên model của máy in và nhấn **OK**.



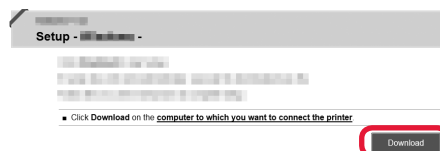
Bạn có thể chọn tên model từ danh sách.

5 Nhấp **Thiết lập**.



Quy trình dành cho Windows và Mac OS được hiển thị bên dưới. Nếu bạn đang sử dụng máy tính với OS ngoài Windows hoặc Mac OS, ví dụ như Chrome OS, thực hiện thiết lập theo hướng dẫn trên màn hình.

6 Nhấp **Tải xuống** và tải xuống dữ liệu cài đặt.



7 Chạy dữ liệu đã tải xuống.

Chuyển sang bước 2 ở trang tiếp theo để tiếp tục.

B Sử dụng CD-ROM cài đặt (Chỉ dành cho Windows)

❶ Chèn CD-ROM cài đặt vào máy tính.

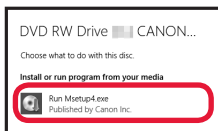


■ Khi sử dụng Windows 10 hoặc Windows 8.1:

❷ Khi thông báo sau đây xuất hiện ở bên phải của màn hình máy tính, nhấp vào thông báo.



❸ Nếu màn hình sau đây xuất hiện, nhấp **Chạy Msetup4.exe** (Run Msetup4.exe).



❹ Nếu hộp thoại **Điều khiển Trạng thái Người dùng** (User Account Control) xuất hiện, nhấp **Có** (Yes).

Khi thông báo này không xuất hiện (hoặc đã biến mất)

1. Nhấp **File Explorer** trên thanh tác vụ.



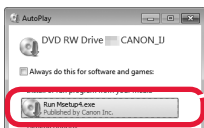
2. Nhấp **PC này** (This PC) ở phía bên trái của cửa sổ đã mở.

3. Nhấp đúp vào biểu tượng CD-ROM ở phía bên phải của cửa sổ. Nếu nội dung của CD-ROM xuất hiện, nhấp đúp vào **Msetup4.exe**.

4. Chuyển sang bước ❷.

■ Khi sử dụng Windows 7:

❷ Khi màn hình **Phát Tự động** (AutoPlay) xuất hiện, nhấp **Chạy Msetup4.exe** (Run Msetup4.exe).



Khi màn hình **Phát Tự động** (AutoPlay) không xuất hiện

1. Nhấp **Máy tính** (Computer) từ menu khởi động.

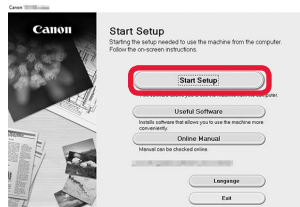
2. Nhấp đúp vào biểu tượng CD-ROM ở phía bên phải của cửa sổ đã mở.

Nếu nội dung của CD-ROM xuất hiện, nhấp đúp vào **Msetup4.exe**.

❸ Nếu hộp thoại **Điều khiển Trạng thái Người dùng** (User Account Control) xuất hiện, nhấp **Tiếp tục** (Continue).

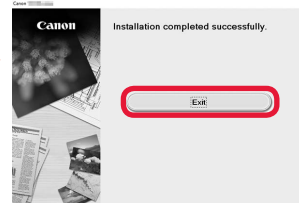
Chuyển sang bước 2 để tiếp tục.

2 Nhấp **Bắt đầu thiết lập** (Start Setup).



Thực hiện theo hướng dẫn trên màn hình để tiếp tục việc thiết lập.

Nếu màn hình sau đây xuất hiện, nhấp **Thoát** (Exit).



Kết nối với máy tính đã hoàn tất. Bạn có thể in từ máy tính.

6-B. Kết nối với smartphone



Bạn cần thiết lập kết nối cho từng smartphone. Chuyển sang thiết lập từ bước 1 cho từng smartphone.

Chuẩn bị

- Bật Wi-Fi trên smartphone.
- Nếu bạn có bộ định tuyến không dây, hãy kết nối smartphone với bộ định tuyến không dây bạn muốn kết nối với máy in.
- * Để thao tác, tham khảo hướng dẫn sử dụng của smartphone và bộ định tuyến không dây hoặc liên hệ với nhà sản xuất.

1 Cài đặt phần mềm ứng dụng Canon PRINT Inkjet/SELPHY trên smartphone của bạn.



iOS : Tìm kiếm "Canon PRINT" trong App Store.

Android : Tìm kiếm "Canon PRINT" trong Google Play.

Hoặc truy cập trang web Canon bằng cách quét mã QR.

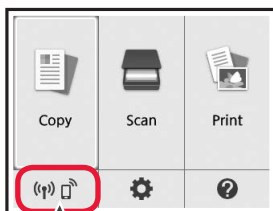


- * Bạn không thể kết nối không dây smartphone với Internet trong khi đang kết nối trực tiếp máy in với smartphone. Trong trường hợp đó, bạn có thể phải trả phí tùy theo hợp đồng với nhà cung cấp dịch vụ.
- * Có thể kết nối trực tiếp tối đa 5 thiết bị với máy in qua kết nối mạng LAN không dây.

2 Kiểm tra hiển thị trên máy in.

Màn hình tắt khi không thực hiện thao tác trong khoảng 10 phút. Nhấn một trong các nút trên bảng thao tác (ngoại trừ nút **BẬT**) để hiển thị màn hình.

- Nếu màn hình sau đây xuất hiện:
Kiểm tra biểu tượng phía dưới bên trái, rồi chuyển sang **A** hoặc **B**.

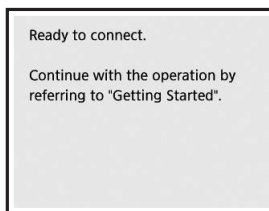


Biểu tượng sau đây xuất hiện.
(Máy in được kết nối tới mạng.)



CÓ

- Nếu màn hình sau đây xuất hiện:
Chuyển sang **B**.



Không (Chuyển sang **B**.)

Nếu xuất hiện, máy in không thể giao tiếp bằng kết nối mạng LAN không dây. Để biết thêm chi tiết, truy cập "<http://ij.start.canon>" để xem **Những câu hỏi thường gặp**.

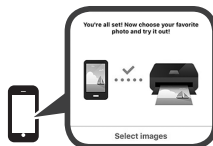
A **iOS** **Android**

1 Gỡ nhệ vào phần mềm ứng dụng đã cài đặt.



2 Thực hiện theo hướng dẫn trên màn hình để đăng ký máy in.

3 Đảm bảo màn hình sau đây xuất hiện.



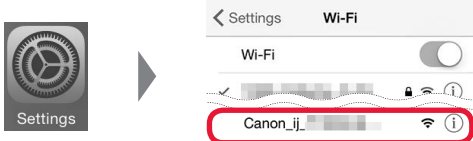
Kết nối với smartphone đã hoàn tất. Bạn có thể in từ smartphone.

Đề in ảnh, nạp giấy ảnh. Chuyển sang phần "Nạp Giấy ảnh" ở trang 8.

B Quy trình bên dưới khác nhau tùy thuộc vào iOS hoặc Android. Chọn hệ điều hành và chuyển tới quy trình tương ứng.

iOS

1 Gõ nhẹ vào **Cài đặt(Settings)** trên màn hình trang chủ của smartphone, và gõ nhẹ vào **Canon_ij_XXXX** trong cài đặt Wi-Fi.



Nếu **Canon_ij_XXXX** không xuất hiện trong danh sách, xem phần "Chuẩn bị cho Máy in" bên dưới để thao tác máy in, rồi lặp lại bước 1.

2 Gõ nhẹ vào phần mềm ứng dụng đã cài đặt.

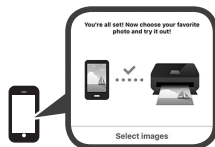


3 Thực hiện theo hướng dẫn trên màn hình để đăng ký máy in.

Thực hiện theo hướng dẫn trên màn hình để tiếp tục việc thiết lập.

Nếu bạn chọn **Auto Select Conn. Method (recommended)** trên màn hình lựa chọn phương thức kết nối, phương thức kết nối thích hợp sẽ được tự động chọn tùy thuộc vào môi trường của bạn.

4 Đảm bảo màn hình bên phải xuất hiện.



Android

1 Gõ nhẹ vào phần mềm ứng dụng đã cài đặt.



2 Thực hiện theo hướng dẫn trên màn hình để đăng ký máy in.

Nếu thông báo "**Printer is not registered. Perform printer setup?**" không xuất hiện, xem phần "Chuẩn bị cho Máy in" bên dưới để thao tác máy in, rồi đợi đến khi thông báo xuất hiện.

Thực hiện theo hướng dẫn trên màn hình để tiếp tục việc thiết lập.

- Chọn phương thức kết nối thích hợp tùy thuộc vào môi trường của bạn.
- Nếu hai tên máy in xuất hiện trên màn hình **Register Printer** như hiển thị bên dưới, chọn A.
A) TS5100 series (xxx.xxx.xxx.xxx)
B) Direct-xxxx-TS5100series

3 Đảm bảo màn hình bên phải xuất hiện.

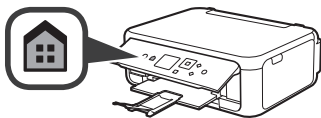


Kết nối với smartphone đã hoàn tất. Bạn có thể in từ smartphone.

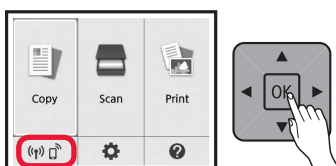
Đổi in ảnh, nạp giấy ảnh. Chuyển sang phần "Nạp Giấy ảnh" ở trang 8.

Chuẩn bị cho Máy in

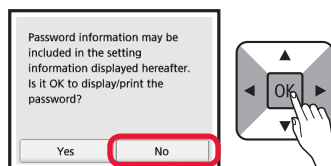
1 Nhấn nút **TRANG CHỦ** trên máy in.



2 Sử dụng nút ▲, ▼, ◀ hoặc ▶ để chọn biểu tượng ở phía dưới bên trái màn hình Trang chủ, rồi nhấn nút **OK**.



3 Nếu màn hình sau đây xuất hiện, chọn **Không(No)** bằng nút ◀ hoặc ▶, rồi nhấn nút **OK**.



4 Sử dụng nút ▲, ▼, ◀ hoặc ▶ để chọn theo thứ tự **Cài đặt mạng LAN(LAN settings) > Mạng LAN không dây(Wireless LAN) > Thiết lập LAN không dây(Wireless LAN setup) > Kết nối ko dây dễ dàng(Easy wireless connect)**, rồi nhấn nút **OK**.

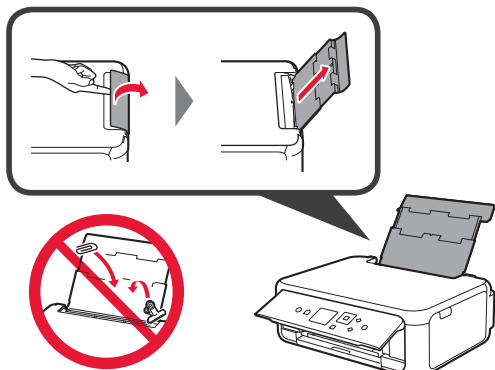
5 Sử dụng nút ◀ hoặc ▶ để chọn **Có(Yes)**, rồi nhấn nút **OK**.

6 Quay lại thao tác của smartphone.

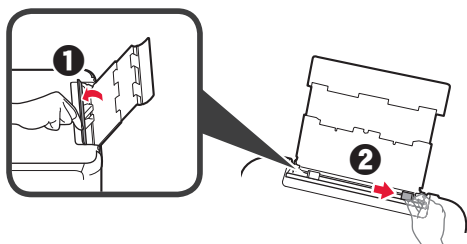
Nạp Giấy ảnh

Nạp giấy ảnh vào khay sau.

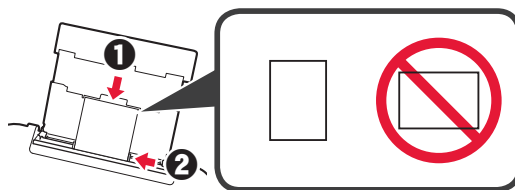
- 1 Mở nắp khay sau và kéo giá đỡ giấy ra.



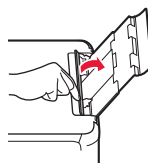
- 2
 - 1 Mở nắp khe nạp.
 - 2 Trượt thanh dẫn giấy bên phải hết về cuối.



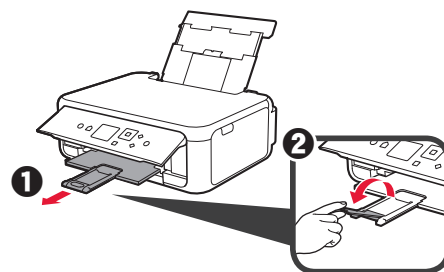
- 3
 - 1 Nạp một số tờ giấy ảnh với mặt cần in hướng lên trên.
 - 2 Trượt thanh dẫn giấy bên phải để căn chỉnh thẳng với cạnh của chõng giấy.



- 4 Đóng nắp khe nạp.
Đọc thông báo trên màn hình máy in và đăng ký thông tin giấy đã nạp.



- 5
 - 1 Kéo khay giấy ra ra.
 - 2 Mở phần mở rộng khay giấy ra.

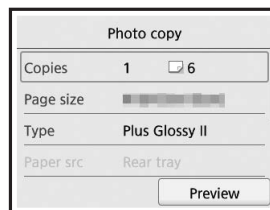


Sao Ảnh

Bạn có thể quét ảnh đã in và in ảnh đó. Bạn cũng có thể quét một số ảnh và in tất cả ảnh đó cùng một lúc.

- 1 Đảm bảo đã bật máy in.
- 2 Nạp một số tờ giấy ảnh.
- 3 Sử dụng nút ▲, ▼, ◀ hoặc ▶ để chọn **Sao(Copy)** trên màn hình Trang chủ, rồi nhấn nút **OK**.
- 4 Sử dụng nút ▲ hoặc ▼ để chọn **Sao ảnh(Photo copy)**, rồi nhấn nút **OK**.
- 5 Đọc các thông báo rồi nhấn nút **OK**.
- 6 Thực hiện theo hướng dẫn trên màn hình để đặt ảnh đã in lên màn quét, rồi nhấn nút **OK**.

- 7 Chỉ định cài đặt in nếu cần thiết.



- 8 Nhấn nút **Màu** để sao màu.
Nhấn nút **Đen** để sao đen trắng.
Máy in bắt đầu in.



Access Online Manual

온라인 설명서에 액세스

Akses Petunjuk Daring

存取線上手冊

เข้าถึง คู่มือออนไลน์

Truy nhập Hướng dẫn sử dụng trực tuyến

From Web site

從網站

웹 사이트에서

จากเว็บไซต์

Dari Situs Web

Từ trang Web



<http://ij.start.canon>



From desktop shortcut

從桌面上的捷徑圖示

바탕 화면 바로 가기에서

จากทางลัดบนเดสก์ท็อป

Dari pintasan desktop

Từ lối tắt trên màn hình nền

