

User Manual

This manual describes the setup and operating procedures for the NA10 Network Adapter for the Canon imageFORMULA DR series. To use this device, read this manual together with the instructions for the scanner to be connected.

Procedures and Example Screens

This manual describes operations using Windows 7 as examples.

Table of Contents

About This Device	4
Setup	5
Connecting to the Wired Network	7
Scanning with the CaptureOnTouch Job Tool from a Smart Device	9
Scanning from a Computer with the CaptureOnTouch Job Tool	16
Using the Web Menu	21
Troubleshooting	27
Specifications	28

Trademarks

- Canon and the Canon logo are registered trademarks of Canon Inc. in the United States and may also be trademarks or registered trademarks in other countries.
- imageFORMULA is a trademark of CANON ELECTRONICS INC.
- Microsoft and Windows are registered trademarks of Microsoft Corporation in the United States and other countries.

Copyright

Copyright 2018 by CANON ELECTRONICS INC. All rights reserved. No part of this publication may be reproduced or transmitted in any form or by any means, electronic or mechanical, including photocopying and recording, or by any information storage or retrieval system without the prior written permission of CANON ELECTRONICS INC.

Disclaimers

The information in this document is subject to change without notice.

CANON ELECTRONICS INC. MAKES NO WARRANTY OF ANY KIND WITH REGARD TO THIS MATERIAL, EITHER EXPRESS OR IMPLIED, EXPECT AS PROVIDED HEREIN, INCLUDING WITHOUT LIMITATION, THEREOF, WARRANTIES AS TO MARKETABILITY, MERCHANTABILITY, FITNESS FOR A PARTICULAR PURPOSE OF USE OR NON-INFRINGEMENT. CANON ELECTRONICS INC. SHALL NOT BE LIABLE FOR ANY DIRECT, INCIDENTAL, OR CONSEQUENTIAL DAMAGES OF ANY NATURE, OR LOSSES OR EXPENSES RESULTING FROM THE USE OF THIS MATERIAL.

CANON ELECTRONICS INC. IS NOT LIABLE FOR THE STORAGE AND HANDLING OF DOCUMENTS SCANNED WITH THIS PRODUCT, OR THE STORAGE AND HANDLING OF RESULTING SCANNED IMAGE DATA.

IF YOU INTEND TO DISCARD THE ORIGINALS OF SCANNED DOCUMENTS, YOU THE CUSTOMER ARE RESPONSIBLE FOR INSPECTING THE SCANNED IMAGES AND VERIFYING THAT DATA IS INTACT.

THE MAXIMUM LIABILITY OF CANON ELECTRONICS INC. UNDER THIS WARRANTY IS LIMITED TO THE PURCHASE PRICE OF THE PRODUCT COVERED BY THE WARRANTY.

FCC REGULATIONS (For North America)

Network Adapter, Model 6830030, 6830050

This device complies with Part 15 of FCC Rules and Industry Canada licence-exempt RSS standard(s). Operation is subject to the following two conditions: (1) this device may not cause interference, and (2) this device must accept any interference, including interference that may cause undesired operation of this device.

Le présent appareil est conforme aux la partie 15 des règles de la FCC et CNR d'Industrie Canada applicables aux appareils radio exempts de licence. L'exploitation est autorisée aux deux conditions suivantes : (1) l'appareil ne doit pas produire de brouillage, et (2) l'utilisateur de l'appareil doit accepter tout brouillage radioélectrique subi, même si le brouillage est susceptible d'en compromettre le fonctionnement.

This equipment complies with FCC/IC radiation exposure limits set forth for an uncontrolled environment and meets the FCC radio frequency (RF) Exposure Guidelines in Supplement C to OET65 and RSS-102 of the IC radio frequency (RF) Exposure rules. This equipment has very low levels of RF energy that it deemed to comply without maximum permissive exposure evaluation (MPE). But it is desirable that it should be installed and operated keeping the radiator at least 20cm or more away from person's body (excluding extremities: hands, wrists, feet and ankles).

Cet équipement est conforme aux limites d'exposition aux rayonnements énoncées pour un environnement non contrôlé et respecte les règles les radioélectriques (RF) de la FCC lignes directrices d'exposition dans le Supplément C à OET65 et d'exposition aux fréquences radioélectriques (RF) CNR-102 de l'IC. Cet équipement émet une énergie RF très faible qui est considérée conforme sans évaluation de l'exposition maximale autorisée. Cependant, cet équipement doit être installé et utilisé en gardant une distance de 20 cm ou plus entre le dispositif rayonnant et le corps (à l'exception des extrémités : mains, poignets, pieds et chevilles).

FCC CAUTION

Changes or modifications not expressly approved by the party responsible for compliance could void the user's authority to operate the equipment.

Note: This equipment has been tested and found to comply with the limits for a Class B digital device, pursuant to Part 15 of the FCC Rules. These limits are designed to provide reasonable protection against harmful interference in a residential installation. This equipment generates, uses, and can radiate radio frequency energy and, if not installed and used in accordance with the instructions, may cause harmful interference to radio communications. However, there is no guarantee that interference will not occur in a particular installation. If this equipment does cause harmful interference to radio or television reception, which can be determined by turning the equipment OFF and ON, the user is encouraged to try to correct the interference by one or more of the following measures:

- Reorient or relocate the receiving antenna.
- Increase the separation between the equipment and receiver.
- Connect the equipment into an outlet on a circuit different from that to which the receiver is connected.
- Consult the dealer or an experienced radio/TV technician for help.

Use of shielded cable is required to comply with Class B limits in Subpart B of Part 15 of FCC Rules.

Do not make any changes or modifications to the equipment unless otherwise specified in the manual. If such changes or modifications should be made, you could be required to stop operation of the equipment.

Canon U.S.A. Inc.

One Canon Park, Melville, NY 11747, U.S.A.

Tel. No. 1-800-OK-CANON (1-800-652-2666)

This transmitter must not be co-located or operated in conjunction with any other antenna or transmitter.



AVERTISSEMENT

Ce produit émet un flux magnétique de faible niveau. Si vous utilisez un stimulateur cardiaque ou pacemaker et éprouvez une sensation inhabituelle, éloignez-vous de la machine et consultez votre médecin.

RADIO INTERFERENCE REGULATIONS (For 120 V models)

This digital apparatus does not exceed the Class B limits for radio noise emissions from digital apparatus as set out in the interference-

causing equipment standard entitled "Digital Apparatus", ICES-003 of the Industry Canada.

RÈGLEMENT SUR LE BROUILLAGE RADIOÉLECTRIQUE (For 120 V models)

Cet appareil numérique respecte les limites de bruits radioélectriques applicables aux appareils numériques de Classe B prescrites dans la norme sur le matériel brouilleur: "Appareils Numériques", NMB-003 édictée par l'Industrie Canada.

Für EMVG

Dieses Produkt ist zum Gebrauch im Wohnbereich, Geschäfts-und Gewerbebereich sowie in Kleinbetrieben vorgesehen.

Model Names

The following names may be provided for the safety regulations in each sales region of the Network Adapter.

NA10: Model 6830030, 6830050

European Union (and EEA) only.

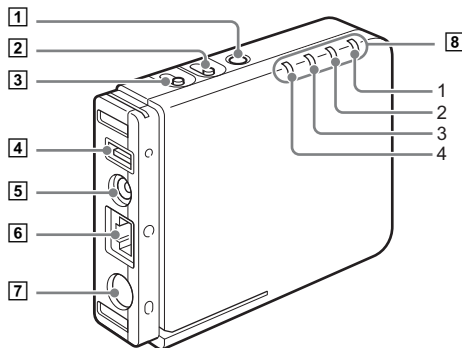


This symbol indicates that this product is not to be disposed of with your household waste, according to the WEEE Directive (2002/96/EC) and your national law. This product should be handed over to a designated collection point, e.g., on an authorized one-for-one basis when you buy a new similar product or to an authorized collection site for recycling waste electrical and electronic equipment (EEE). Improper handling of this type of waste could have a possible negative impact on the environment and human health due to potentially hazardous substances that are generally associated with EEE. At the same time, your cooperation in the correct disposal of this product will contribute to the effective usage of natural resources. For more information about where you can drop off your waste equipment for recycling, please contact your local city office, waste authority, approved WEEE scheme or your household waste disposal service. For more information regarding return and recycling of WEEE products, please visit www.canon-europe.com/environment. (EEA: Norway, Iceland and Liechtenstein)

About This Device

This device allows you to connect LAN-compatible computers to a scanner via a network. By connecting a scanner to the device with a USB cable, you can perform scanning operations from a computer via the network.

Names of Parts



1 Power button

Turns on this device. The power lamp lights blue when the device turns on.

When the device's power is on, press and hold this button to turn it (and the power lamp) off.



Hint

When a scanner is connected, the device's power will be linked to the scanner and will turn on/off when the scanner turns on/off.

2 Reset button

Hold this button while turning the device on, and keep holding until it starts up, to return the device to its factory default state.

Holding the button while the device is turned on resets only the device's settings to their initial values.

3 DHCP On/Off button

Determines whether the device's IP address is obtained automatically via DHCP or whether a static address is used.

When DHCP is enabled, holding this button while turning on the device turns off the DHCP lamp and disables DHCP.

When DHCP is disabled, holding this button while turning on the device lights the DHCP lamp and enables DHCP.

Depending on the connection environment, it may take up to 2 minutes for the device to start up. Be sure to hold the button until startup is complete.

4 USB connector

Connect this device to the scanner using the USB cable.

5 Power output connector

Use the supplied power relay cable to connect this to the scanner's power connector.

6 LAN port


Connect a network cable that supports RJ-45 (10Base-T, 100Base-TX, 1000Base-T) here.

7 Power input connector

Connect the AC adapter supplied with the scanner here.

8 Lamps

The following lamps indicate the device state.

Lamps		Meaning	
1	 (Power Lamp)	Lit (blue)	Power on
		Unlit	Power off
2	DHCP	Lit (green)	DHCP ON
		Unlit	DHCP OFF
3	Connection	Lit (green)	LAN connection established
		Lit (red)	Initializing setup
		Unlit	LAN stopping
4	Status	Lit (green)	Network connection stable

Setup

(1) Installing the Scanner Driver

To use the device, the driver of the scanner to be used in conjunction with the device must be updated to its latest version.

The scanner driver is available on the downloads page of the Canon website. For details on acquiring and installing the driver, visit the Canon support website.

<http://www.canon-elec.co.jp/products/ims/softwareDownload/index.html>

Supported scanners

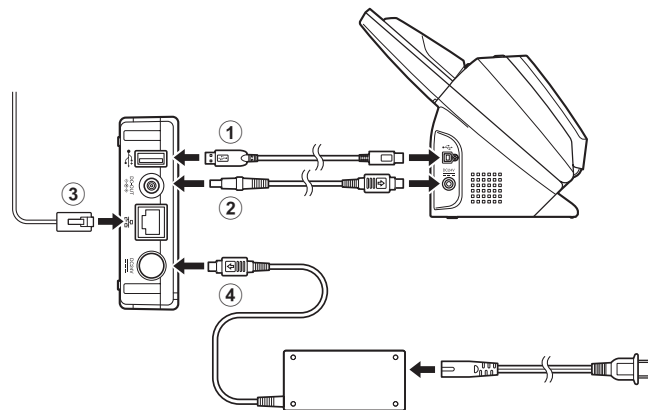
This unit supports the following scanners.

Scanner	Driver version
DR-C230	1.0.11705.08001 SP2
DR-C240	1.1.11508.3001 SP4
DR-M140	1.2.11407.1001 SP7
DR-M160II	1.2.11402.06001 SP7
DR-M260	1.0.11705.30001 SP4
DR-M1060	1.0.11402.20001 SP6

An update is required for scanner driver versions indicated above and earlier. For details on how to acquire the latest scanner driver and the latest information on supported models, visit the Canon support website.

(2) Connecting to the Scanner

- ① Connect the supplied USB cable to the USB ports on the device and the scanner.
When connecting the device to a scanner that supports USB 3.0/3.1, use the USB cable supplied with the scanner.
- ② Connect the supplied power relay cable to the power output connector on the device and the power connector on the scanner.
- ③ Plug the network cable's connector (RJ-45) into the LAN port.
- ④ Connect the AC adapter supplied with the scanner to the device, and connect the power plug to a power outlet.

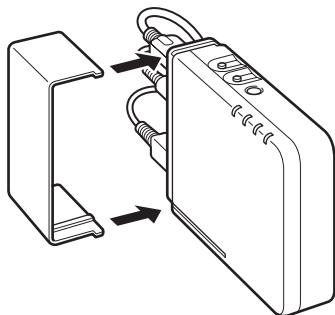


⚠ CAUTION

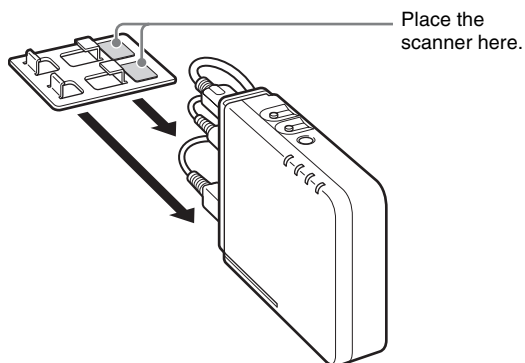
Connect and disconnect the AC adapter or power relay cables by holding their plugs. Connecting and disconnecting by the cable may result in damage to the cable.

Cord Cover and Stand

You can attach the supplied cord cover to protect the connected cable's connector.



You can attach the stand to set the device upright. In addition, placing the scanner on the stand will stabilize the device.



⚠ CAUTION

- When connecting the device to a scanner equipped with a fan, maintain a space of at least 10 mm between the device and the scanner so as not to obstruct the vents. If you attached the device to the stand and are placing the scanner on the stand, be sure to position the device so that it does not obstruct the scanner's vents.
- When the stand is attached to the device, attach the cord cover as well to prevent disconnection of the stand.

Connecting to the Wired Network

Under factory default conditions, the device will acquire its IP address automatically from a DHCP server. If the network to which the device will connect includes a DHCP server, the device will be usable simply by connecting to that network.

You can check whether the device is connected to the network properly and ready for use by performing the following and starting the Driver Setting Tool.

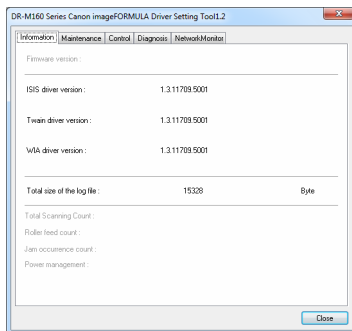


Hint

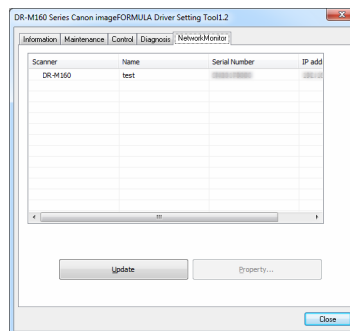
This section describes operations for when the DR-M160II is being used. When using a different model, replace any instance of the model name with that of the model you are using.

1 Click [All Programs] — [Canon <scanner name>] — [Driver Setting Tool] in the start menu.

Driver Setting Tool starts.

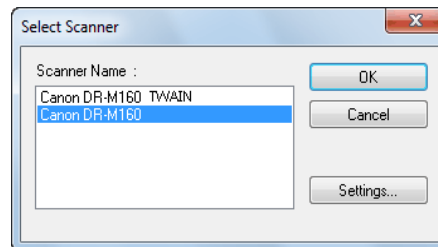


2 Click the [NetworkMonitor] tab.



3 Check that the scanner appears in the list.

4 Select the scanner in your application.



Specifying a Static IP Address for the Device

Perform the following when specification of a static IP address for the device is necessary, such as when the network does not include a DHCP server.

1 Turn on the device while holding the DHCP On/Off button.

The power lamp will light. (The other lamps will also light momentarily and then turn off.) Hold the DHCP On/Off button until the Connection lamp lights.

CAUTION

If the Connection lamp does not light even after holding the power button for 3 minutes or more, check the network cable connection.

2 Temporarily change the network address of the computer to which the device will be connected to “192.168.0.100”.

Connect this device to your computer by peer-to-peer connection, and set a static IP address.

3 Start the web browser, and access the “http://192.168.0.10/” URL.

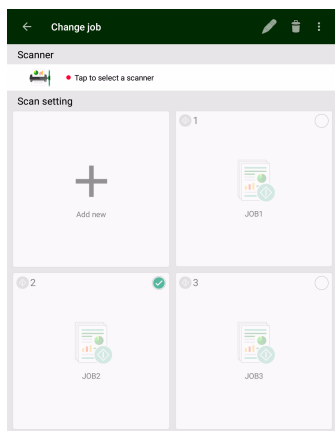
The device’s web page opens, and the login screen is displayed.

4 Specify the IP address for the device in the [Network Setting] screen of the web menu.

For details, see “Using the Web Menu” (p. 21).

Scanning with the CaptureOnTouch Job Tool from a Smart Device

The CaptureOnTouch Job Tool is an application for smart devices (such as smart phones and tablet devices) for controlling scan operations via this device (NA10).



The CaptureOnTouch Job Tool for smart devices provides the following scanning methods.

Job Scanning from the App

Tap a job icon in the CaptureOnTouch Job Tool to scan according to registered scan job settings.

Scanning with Scanner Start Button

You can copy a job registered in the CaptureOnTouch Job Tool to the scanner, then run that job by pressing the scanner's start button.

Job Scanning from a PC

When there is one or more computer on the same network, you can use the CaptureOnTouch Job Tool to select and execute jobs registered by CaptureOnTouch on each computer.

CAUTION

CaptureOnTouch Job Tool compatibility requires CaptureOnTouch version 4.2 or later.

Preparation Before Scanning

Install the CaptureOnTouch Job Tool on your smart device, connect the NA10 to a computer, and connect your smart device to the network.

- 1 Install the CaptureOnTouch Job Tool application on your smart device.**
 - For iOS devices, download the CaptureOnTouch Job Tool from the App Store and install it.
 - For Android devices, download the CaptureOnTouch Job Tool from Google Play and install it.
- 2 Connect the NA10 to a wired network.**

For details, see “Connecting to the Wired Network” (p. 7).
- 3 Connect your smart device to the same network as this device and the computer.**

Granting Access Permission

When saving scanned data in a specific location, a screen asking for permission to access the smart device is displayed. You can save scanned data if you grant access permission. If you do not grant access permission, you cannot save the scanned data. You can change granting/denial of access permission by the following procedure.

CAUTION

The operating procedure may differ depending on OS version and terminal type.

Android devices

- 1 Tap [Settings].
The [Settings] screen appears.
- 2 Tap [Apps].
The [Apps] screen appears.
- 3 Tap [COTJT].
The [App info] screen appears.
- 4 Tap [Permissions].

iOS devices

- 1 Tap [Settings].
The [Settings] screen appears.
- 2 Tap [COTJT].
The access permission setting screen is displayed.
- 3 Tap [Photos], and select [Add Photos Only] or [Never].

Job Scanning from the App


You can register a job in the CaptureOnTouch Job Tool and execute scanning according to the job's scan settings. Scanned data is saved in a shared folder on the specified computer or smart device.

1 Start the CaptureOnTouch Job Tool.


The [Scan from app job] screen appears.

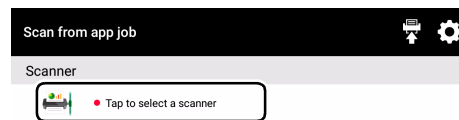


Hint

You can change the screen displayed at startup by tapping [>] and selecting [Initial screen setting].

2 Select the scanner.

- ① Tap [].

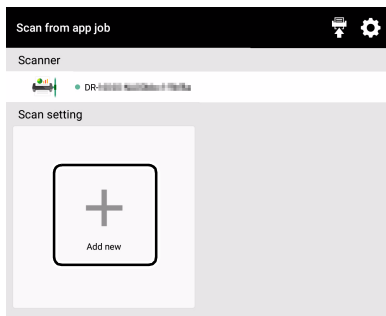


- ② Select the scanner on the [Select Scanner] screen.

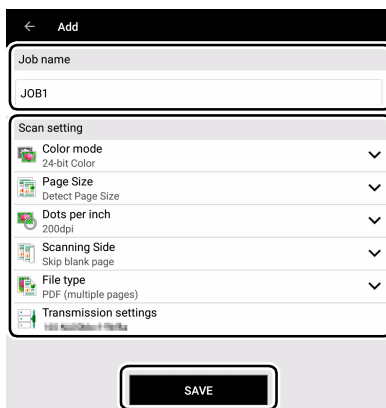


3 Register the job.

① Tap [Add new].



② On the [Add] screen, set the [Job name] and [Scan setting], then tap [SAVE].



⚠ CAUTION

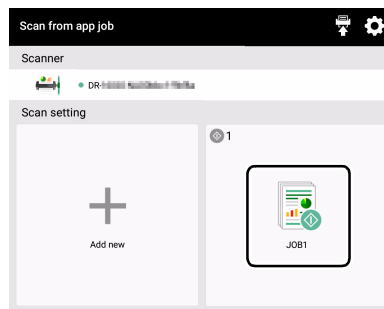
- In [Transmission settings] under [Scan setting], select either [Shared Folder] or [In (name of smart device)] as the destination for the scanned data. When [Shared Folder] is selected, be sure to specify the shared folder in which the scanned data is to be saved.
- To scan A3-size documents on the DR-M1060, set [Page Size] to [Detect Page Size].

💡 Hint

You can register multiple jobs. Up to 99 jobs can be registered.

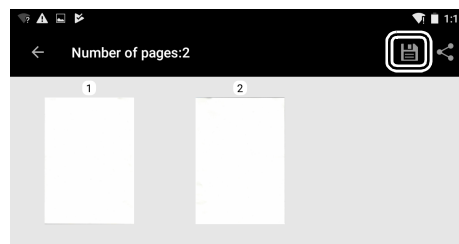
4 Tap the registered job's icon.

Scanning is executed and the scanned data is saved in the shared folder of the specified computer.



5 Tap [📄] to save the scanned data in the smart device.

Scanned data is saved in the smart device.



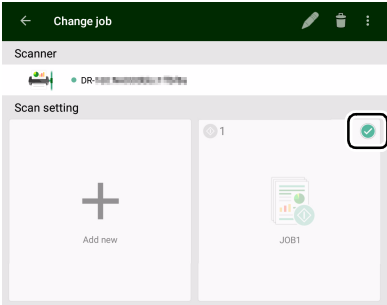
💡 Hint

By clicking [📄], you can send scanned data as an e-mail attachment or save it to another app.

Editing job settings

You can edit the settings of registered jobs.

- 1 Press and hold the icon of the job you want to edit.
[✔] appears to indicate the job is editable.



Hint

To cancel editing, tap the job icon again or tap [H] – [Deselect].

- 2 Tap [Edit].
The [Edit] screen appears.

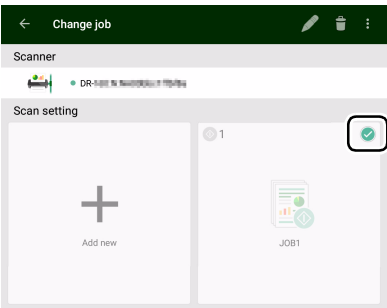
- 3 Change the settings in [Job name] and [Scan setting], and tap [SAVE].
The settings are saved.



Deleting jobs

You can delete registered jobs.

- 1 Press and hold the icon of a job you want to delete.
[✔] appears to indicate it is ready to be deleted.



Hint

- To cancel the selected state, tap the selected job icon.

- By tapping [H] – [Select all] or [Deselect], you can select all jobs or cancel the selected state.

2 Tap [H].

A confirmation message appears.

3 Tap [OK].

The selected job(s) is deleted.

Scanning with Scanner Start Button

You can copy a job registered in the CaptureOnTouch Job Tool to the scanner, then scan according to those scan job settings by pressing the scanner's start button.

In this scanning method, since the NA10 controls the scanner, the smart device is not needed to execute scanning.

1 Start the CaptureOnTouch Job Tool.

The [Scan from app job] screen appears.

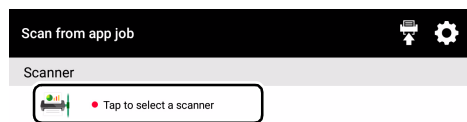


Hint

You can change the screen displayed at startup by tapping [⚙] and selecting [Initial screen setting].

2 Select the scanner.

① Tap [🖨].



② Select the scanner on the [Select Scanner] screen.



3 Tap [🖨], or tap [⚙] — [Copy job registration settings].



4 Enter the administrator password.

Enter the same password as for the Web menu. For details, see "Displaying the Web Menu of This Device" (p. 21).

5 Tap [OK].

All registered jobs are registered in the scanner at once.

⚠ CAUTION

The number of jobs that can be copied depends on the scanner.

6 Select the job number on the scanner and press the start button.

Scanning executes according to the scan settings of the selected job number.

During scanning, the power light of the device blinks blue. It lights steadily blue when scanning and data transmission are completed.

⚠ CAUTION

- If the scanner does not detect the document (there is no document in the feeder) when scanning starts, the Connection lamp lights orange.
- If data cannot be sent, such as because of an invalid destination, a transmission error occurs and the Connection lamp lights red.
- If you copy jobs registered in the CaptureOnTouch Job Tool to the scanner, you cannot use the favorite settings assigned by CaptureOnTouch to the job buttons on the scanner itself. If you want to use CaptureOnTouch favorite settings, first delete from the scanner all jobs copied from the CaptureOnTouch Job Tool.

To Delete Jobs Copied to the Scanner

Jobs copied to the scanner can be deleted.

1 Delete the job(s) from the CaptureOnTouch Job Tool.

For details, see “Deleting jobs” (p. 12).

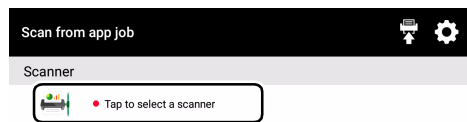


Hint

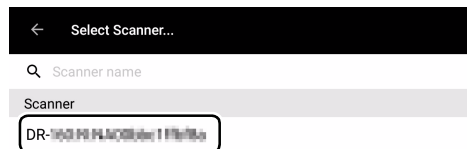
To delete all jobs copied to the scanner, delete all jobs from the CaptureOnTouch Job Tool.

2 Select the scanner.

① Tap [🖨️].



② Select the scanner on the [Select Scanner] screen.



3 Tap [🖨️], or tap [⚙️] — [Copy job registration settings].



4 Enter the administrator password.

Enter the same password as for the Web menu. For details, see “Displaying the Web Menu of This Device” (p. 21).

5 Tap [OK].

Jobs deleted from the CaptureOnTouch Job Tool are deleted from the scanner.

Job Scanning from a PC

When there is one or more computer on the same network, you can use the CaptureOnTouch Job Tool to select and execute jobs registered by CaptureOnTouch on each computer.



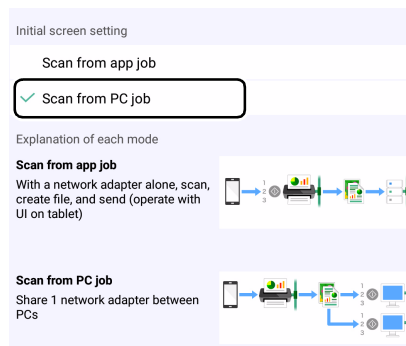
CAUTION

Scanning cannot be executed with this operation if a job registered in CaptureOnTouch Job Tool has been copied to the scanner. All jobs from the CaptureOnTouch Job Tool registered in the scanner must first be deleted. For details, see “To Delete Jobs Copied to the Scanner” (p. 14).

1 Start the CaptureOnTouch Job Tool.

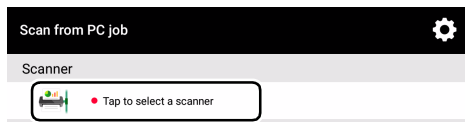
The [Scan from app job] screen appears.

2 Tap [Scan from PC job] in [⚙️] – [Initial screen setting].



3 Select the scanner.

① Tap [🖨️].

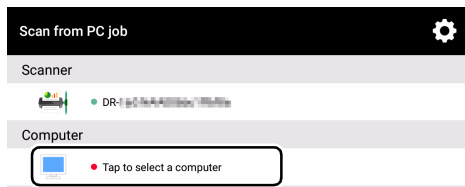


② Select the scanner on the [Select Scanner] screen.

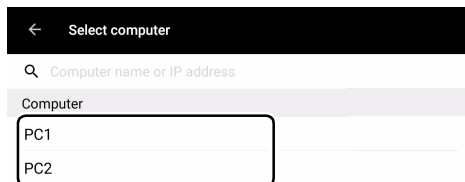


4 Select a computer.

① Tap [💻].



② On the [Select computer] screen, select a computer.

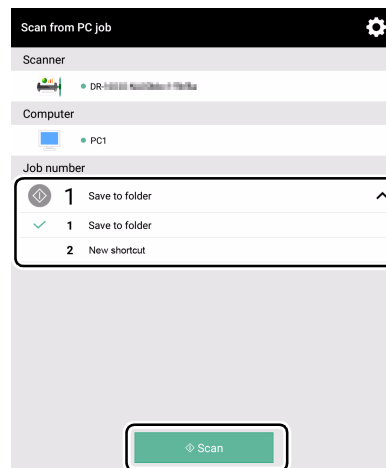


⚠ CAUTION

Start CaptureOnTouch on the computer.
The computer cannot be selected unless CaptureOnTouch is running.

5 Tap the job number to execute, and tap [Scan].

Scanning executes according to the scan settings of the selected job number.



💡 Hint

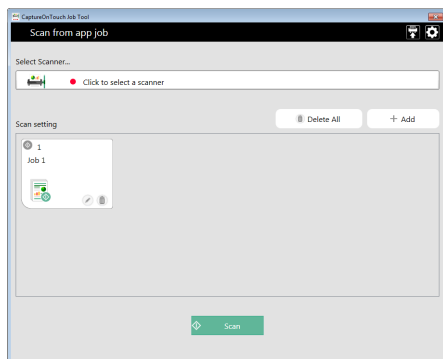
- Using the CaptureOnTouch favorite on the computer selected in the above figure, the job is registered as shown below.



- Only the favorites that are registered to the scanner's job buttons using CaptureOnTouch can be operated from CaptureOnTouch Job Tool.

Scanning from a Computer with the CaptureOnTouch Job Tool

CaptureOnTouch Job Tool for Windows is an application to control scanning via the NA10 by computer operation.



The CaptureOnTouch Job Tool for Windows provides the following scanning methods.

Job Scanning with the App

Select a job icon in the CaptureOnTouch Job Tool and click [Scan] to scan according to the scan settings of the registered job.

Scanning with Scanner Start Button

By copying a job registered in the CaptureOnTouch Job Tool to the scanner, you can then execute the job by pressing the scanner's start button.

CAUTION

The CaptureOnTouch Job Tool for Windows requires that .NET Framework 4.5.2 or higher be installed.

Preparation Before Scanning

Install the CaptureOnTouch Job Tool on the computer, and connect it and the NA10 to the network.

- 1 **Install the CaptureOnTouch Job Tool application on the computer.**

- 2 **Connect the NA10 to a wired network.**
For details, see "Connecting to the Wired Network" (p. 7).

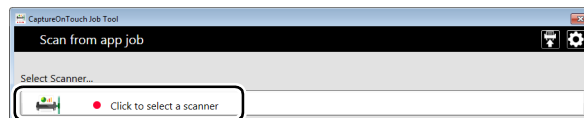
Job Scanning with the App

You can register a job in the CaptureOnTouch Job Tool and execute scanning according to the job's scan settings. Scanned data is saved in a shared folder on the specified computer.

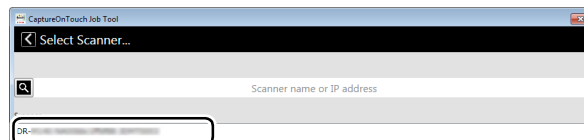
- 1 **Start the CaptureOnTouch Job Tool.**
The [Scan from app job] screen appears.

- 2 **Select the scanner.**

① Click [Select Scanner].

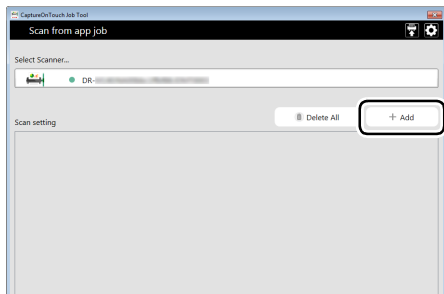


② Select the scanner on the [Select Scanner] screen.

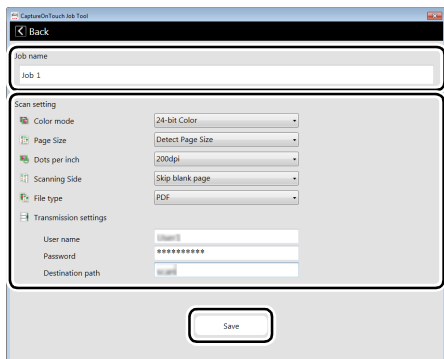


3 Register the job.

① Click [Add].



② On the Add screen, set the [Job name] and [Scan setting], then click [Save].



CAUTION

- In [Transmission settings] under [Scan setting], be sure to specify the shared folder in which to save the scanned data.
- To scan A3-size documents on the DR-M1060, set [Page Size] to [Detect Page Size].

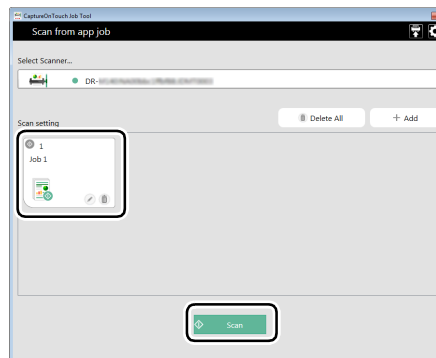


Hint

You can register multiple jobs. Up to 99 jobs can be registered.

4 Click the registered job's icon, then click [Scan].

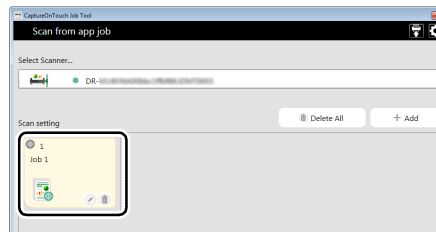
Scanning is executed and the scanned data is saved in the shared folder of the specified computer.



Editing job settings

You can edit the settings of registered jobs.

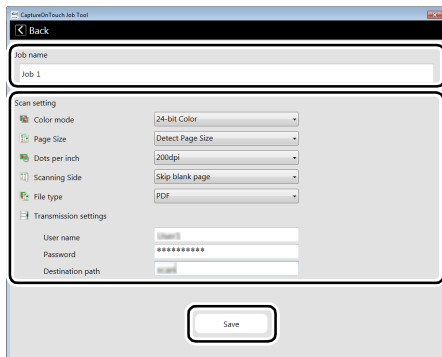
1 Click the icon of the job you want to edit.



2 Click [Edit].

The [Edit] screen appears.

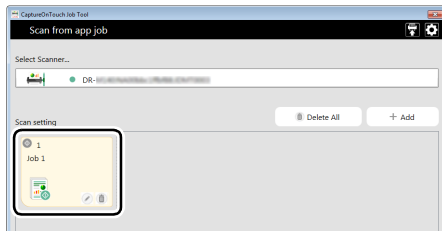
-
- 3 Change the settings in [Job name] and [Scan setting], and click [Save].**
The settings are saved.



Deleting jobs

You can delete registered jobs.

-
- 1 Click the icon of the job you want to delete.**

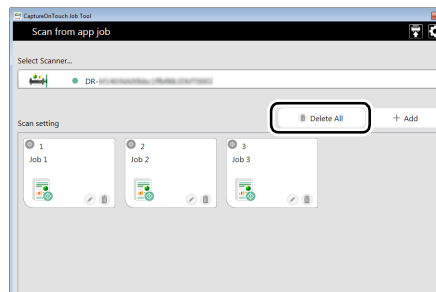


-
- 2 Click [🗑️].**
The selected job(s) is deleted.

Deleting all jobs

You can delete all registered jobs at once.

-
- 1 Click [Delete All].**
A confirmation message appears.



-
- 2 Click [OK].**
All jobs are deleted.

Scanning with Scanner Start Button

You can copy a job registered in the CaptureOnTouch Job Tool to the scanner, then scan according to those scan job settings by pressing the scanner's start button.

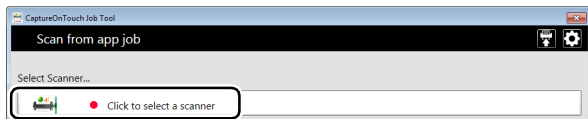
In this scanning method, since the NA10 controls the scanner, the computer is not needed to execute scanning.

1 Start the CaptureOnTouch Job Tool.

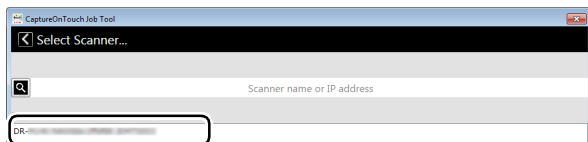
The [Scan from app job] screen appears.

2 Select the scanner.

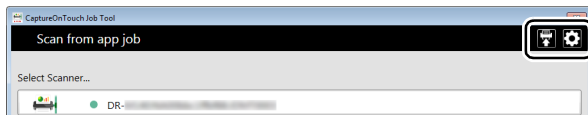
① Click [].



② Select the scanner on the [Select Scanner] screen.



3 Click [], or click [] — [Copy job registration settings].



4 Enter the administrator password.

Enter the same password as for the Web menu. For details, see “Displaying the Web Menu of This Device” (p. 21).

5 Tap [OK].

All registered jobs are registered in the scanner at once.

⚠ CAUTION

The number of jobs that can be copied depends on the scanner.

6 Select the job number on the scanner and press the start button.

Scanning executes according to the scan settings of the selected job number.

During scanning, the power light of the device blinks blue. It lights steadily blue when scanning and data transmission are completed.

⚠ CAUTION

- If the scanner does not detect the document (there is no document in the feeder) when scanning starts, the Connection lamp lights orange.
- If data cannot be sent, such as because of an invalid destination, a transmission error occurs and the Connection lamp lights red.
- If you copy a job registered in the CaptureOnTouch Job Tool to the scanner, you cannot use the favorite settings assigned to the job buttons on the scanner with CaptureOnTouch. To use the CaptureOnTouch favorite settings, first delete any jobs copied to the scanner with the CaptureOnTouch Job Tool.

To Delete Jobs Copied to the Scanner

Jobs copied to the scanner can be deleted.

1 Delete the job(s) from the CaptureOnTouch Job Tool.

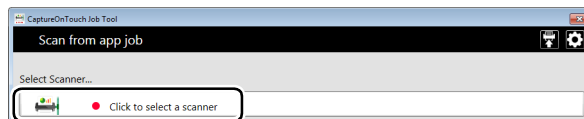
For details, see “Deleting jobs” (p. 12), “Deleting all jobs” (p. 18).

Hint

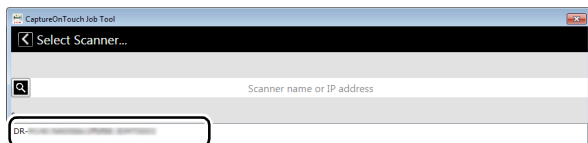
To delete all jobs copied to the scanner, delete all jobs from the CaptureOnTouch Job Tool.



2 Select the scanner.

① Click [].



② Select the scanner on the [Select Scanner] screen.



3 Click , or click  — [Copy job registration settings].



4 Enter the administrator password.

Enter the same password as for the Web menu. For details, see “Displaying the Web Menu of This Device” (p. 21).

5 Click [OK].

Jobs deleted from the CaptureOnTouch Job Tool are deleted from the scanner.

Using the Web Menu

Displaying the Web Menu of This Device

Since this device has the HTTP protocol, advanced settings can be configured or changed via a web browser.

! IMPORTANT

- We recommend the following web browsers:

Windows	Microsoft Internet Explorer 11 or higher
	Microsoft Edge 38 or higher
	Firefox 3.0.0 or higher
	Chrome 11.0 or higher

- In the following instructions, Internet Explorer 11 and Windows 7 are used as example. Display may vary depending on the web browser.

💡 Hint

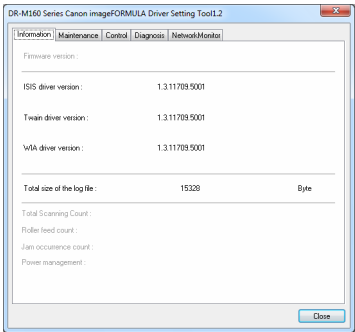
- The web configuration page complies with HTTP 1.0 (RFC1945) / HTML 3.0.
- The operating status of the connected scanner is automatically refreshed every 30 sec.

Displaying the Web Menu of This Device

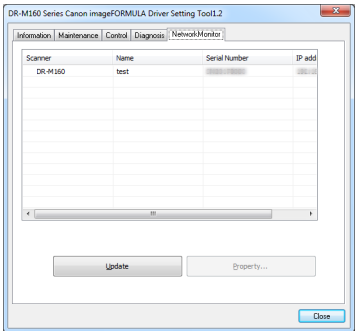
💡 Hint

This section describes operations for when the DR-M160II is being used. When using a different model, replace any instance of the model name with that of the model you are using.

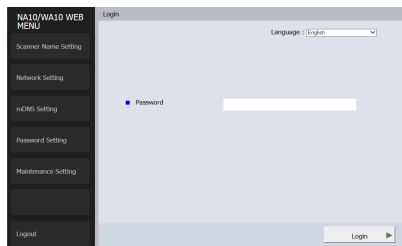
- 1 Click [All Programs] — [Canon <scanner name>] — [Driver Setting Tool] in the start menu. Driver Setting Tool starts.



- 2 Click the [NetworkMonitor] tab.



- 3 Select the scanner from the list, and click [Property].**
The device's web page opens, and the login screen is displayed.



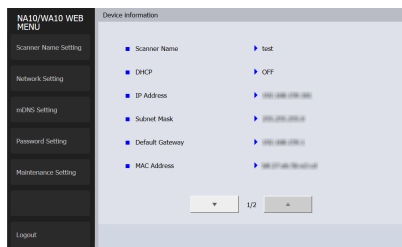
- 4 Select a display language for the web page in the [Language] list box.**

- 5 Enter the administrator password in [Password].**
When opening the web menu for the first time, you will proceed to the next step without password entry, as an administrator password is not configured under the device's factory default settings. If you changed the administrator password previously via the web menu, enter that new password.

⚠ CAUTION

To ensure security, we recommend changing the administrator password from its factory default setting. You can change the password on the [Password Setting] screen of the web menu (p. 25).

- 6 Click [Login].**
The [Device information] screen appears.



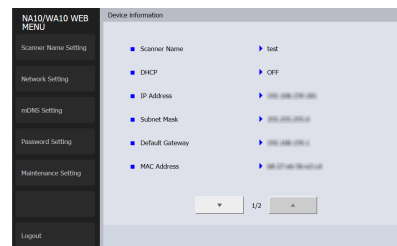
Specifying the Device's IP Address to Display the Web Menu

Enter the device's IP address in the address bar of the web browser, and press the Enter key.

Example: Enter 192.168.0.10 (displayed as "http://192.168.0.10/")

The device's web page opens, and the login screen is displayed.

The [Device information] screen appears immediately after you log into the web menu, allowing you to view the current settings.



Pages of the Web Menu

When you click the items on the left menu, the following pages are displayed.

Scanner Name Setting	Displays the scanner name.
Network Setting	Configures the network settings.
mDNS Setting	Configures the mDNS settings.
Password Setting	Configures the administrator password used to log into the web menu.
Maintenance Setting	Restores the factory default settings and updates the firmware.



Hint

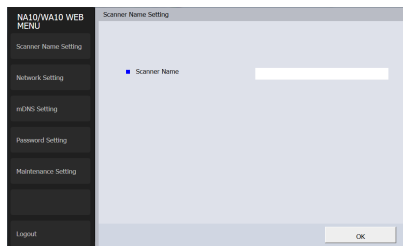
To return to the [Device information] screen from one of its setting screens, click the model name of the device that appears at the top of the left menu.

Web Menu Settings

This section describes the setting items on each of the pages of the web menu.

Scanner Name Setting

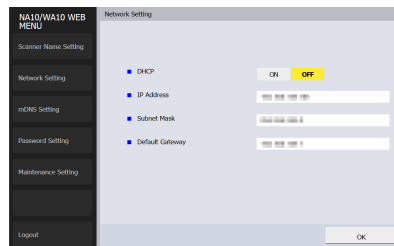
If you click [Scanner Name Setting] on the left menu, the page below is displayed.



Item	Description
Scanner Name	Displays the device name of the connected scanner.

Network Setting

If you click [Network Setting] on the left menu, the page below is displayed.

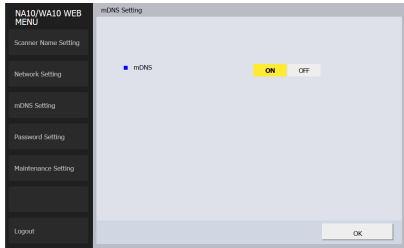


Item	Description	Default Value
DHCP	Enable ([ON]) / disable ([OFF]) the DHCP protocol. To assign an IP address using DHCP, the DHCP server must be running in your subnetwork.	ON
IP Address	Set the IP address of the device. If DHCP is enabled, the IP address obtained from it will be applied. The value must be four decimal numbers separated by dots and expressed in the [xxx.xxx.xxx.xxx] format.	192.168.0.10
Subnet Mask	Set the subnet mask of the device. If DHCP is enabled, the subnet mask obtained from it will be applied. The value must be four decimal numbers separated by dots and expressed in the [xxx.xxx.xxx.xxx] format.	255.255.255.0

Item	Description	Default Value
Default Gateway	<p>Set the gateway IP address of the device.</p> <p>If DHCP is enabled, the default gateway obtained from it will be applied.</p> <p>The value must be four decimal numbers separated by dots and expressed in the [xxx.xxx.xxx.xxx] format.</p> <p>Also, the gateway needs to be running in the same subnetwork as the device.</p>	192.168.0.1

mDNS Setting

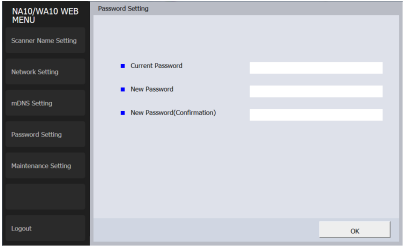
If you click [mDNS Setting] on the left menu, the page below is displayed.



Item	Description	Default Value
mDNS	<p>Enable/disable multicast DNS.</p> <p>This setting allows scanning applications to search for and automatically connect to this device and its connected scanner.</p> <p>Enable the setting under normal circumstances.</p> <p>When the setting is disabled, you must manually specify the scanner using the device's IP address to scan from a scanning application.</p>	ON

Password Setting

If you click [Password Setting] on the left menu, the page below is displayed.

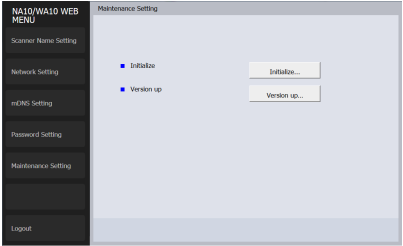


Item	Description	Default Value
Current Password	Enter the current password.	None
New Password	Set the administrator password (up to 32 characters). This password is used for authentication when configuring settings in a web browser.	None
New Password (Confirmation)	Used to confirm the password.	None

Maintenance Setting

If you click [Maintenance Setting] on the left menu, the page below is displayed.

In this page, you can restore the device's factory default settings and update the firmware.



Item	Description
Initialize	Restore the device's factory default settings. If you click [Initialize] and then [Yes] in the screen that appears, the device's factory default settings are restored, and the device restarts.
Version up	Update the device's firmware. Click [Version up], and then specify the firmware file in the screen that appears.

Visit the Canon support page for instructions on out to obtain the firmware.

<http://www.canon-elec.co.jp/products/ims/softwareDownload/index.html>

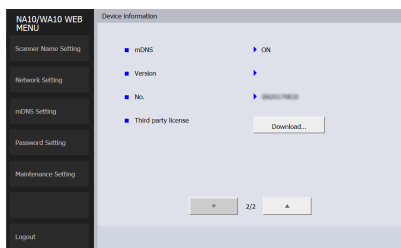
Software License

The device includes software that is licensed under GNU GENERAL PUBLIC LICENSE (GPL), GNU LESSER GENERAL PUBLIC LICENSE (LGPL), or proprietary licenses. You can view the original text of a software license via the device's web menu.

1 Follow the steps in “Displaying the Web Menu of This Device” (p. 21), and display the [Device information] screen.

2 Click [▼] to display the next page of the [Device information] screen.

3 Click [Download] for [Third party license].



Troubleshooting

Problem 1 Scanning is not possible.

- Solutions
- Confirm that the scanner and the device are turned on.
 - Confirm that the scanner is compatible with the device.
 - Confirm that the device and scanner are connected via USB cable.
 - Confirm that the network cable is connected properly.
 - Confirm that the IP address is configured properly.

Problem 2 I cannot get a working connection.

- Solutions
- If a DHCP server does not exist on the network, you need to use a static IP address. For details, see “Specifying a Static IP Address for the Device” (p. 8).
 - You cannot connect if the connected segment is different. Please set it to the same segment as your computer. For details, please contact your network administrator.
 - Connection may not be possible due to security software settings. For details, please contact your network administrator.
 - You cannot connect if the same device exists on multiple networks and you specify a device with a different IP address. Please double check the IP address of the device to be used.
 - Confirm that the version of the installed scanner driver is compatible with this device

Problem 3 Automatic connection to the network is not possible.

- Solutions
- If your network environment supports DHCP, consult your network administrator. If your network environment does not support DHCP, configure the IP address manually.

Problem 4 The network disconnects during use.

- Solutions
- Check the condition of the cable connection.
 - Check the status of network traffic. When a heavy load is placed on the network, processing takes time and timeouts may occur. Wait for awhile and then reconnect. If the situation does not improve, please contact your network administrator.

Problem 5 The scanner automatically turns itself off, making the connection unavailable.

- Solution
- When the scanner has its Auto Power Off function enabled, it automatically turns itself off after a certain period of inactivity, regardless of the connection. Turn the scanner back on, and as necessary, disable the Auto Power Off function as described in the scanner’s manual.

Problem 6 I want to reset the device’s settings to their initial values.

- Solutions
- Press and hold the Reset button while the device is turned on to reset the device’s settings to their initial values. During initialization, the Connection lamp lights red. When the Connection lamp lights green, initialization is finished.
- Holding the Reset button while turning on the device, and continuing to hold it until the Connection lamp on this device lights red, resets it to the factory default state.

Specifications

Main Unit

Type	Network Adapter
Scanner connection interface	USB 2.0 Hi-Speed (Type A)
Network interface	IEEE802.3 10Base-T/100Base-TX/ 1000Base-T
Dimensions	116 mm x 93.6 mm x 28.8 mm (4.57" x 3.69" x 1.13") (W x D x H; without cord cover)
Mass	Approx. 179 g (0.4 lb) (main body only)
Power supply	AC adapter (use the adapter supplied with the scanner)
Power consumption	Max. during operation: 5.6 W; During standby: 4.2 W; During power off: 0.1 W or less
Operating environment	Temperature: 10 to 35 degrees C (50 to 95 degrees F) Humidity: 20 to 85% (RH)
* Varies according to environmental conditions.	

Safety-related markings on the machine
Marquages de sécurité sur la machine
Marcature di sicurezza sulla macchina
Sicherheitshinweise auf der Maschine
Marcas de la máquina relacionadas con la seguridad
Veiligheidsmarkeringen op de machine
Makine üzerindeki güvenlik işaretleri



[English]	Switch (On)
[Français]	Commutateur (Marche)
[Italiano]	Interruttore (On)
[Deutsch]	Schalter (Ein)
[Español]	Interruptor (encendido)
[Nederlands]	Schakelaar (On)
[Türkçe]	Anahtar (Açık)

Power on
Sous tension
Alimentazione presente
Eingeschaltet
Máquina encendida
Aan
Güç açık



[English]	Switch (Off)
[Français]	Commutateur (Arrêt)
[Italiano]	Interruttore (Off)
[Deutsch]	Schalter (Aus)
[Español]	Interruptor (apagado)
[Nederlands]	Schakelaar (Off)
[Türkçe]	Anahtar (Kapalı)

Power off (no standby current)
Hors tension (pas de courant de veille)
Alimentazione assente (nessuna corrente di standby)
Ausgeschaltet (ohne Ruhestromaufnahme)
Máquina apagada (sin corriente en espera)
Uit (geen stand-byverbruik)
Güç kapalı (bekleme akımı yok)



[English]	Switch (Standby)
[Français]	Commutateur (Veille)
[Italiano]	Interruttore (Standby)
[Deutsch]	Schalter (Standby)
[Español]	Interruptor (en espera)
[Nederlands]	Schakelaar (Standby)
[Türkçe]	Anahtar (Bekleme)

Power on/off (standby current on)
Sous/hors tension (courant de veille activé)
Alimentazione on/off (corrente di standby presente)
Ein- und Ausschalten (mit Ruhestromaufnahme)
Máquina apagada/encendida (con corriente en espera)
Aan-uit (stand-byverbruik aan)
Güç açık/kapalı (bekleme akımı açık)



[English]	Switch (Push-On/Push-Off)	Power on/off (no standby current)
[Français]	Commutateur (Appuyer pour mettre en marche/Appuyer pour arrêter)	Sous/hors tension (pas de courant de veille)
[Italiano]	Interruttore a pulsante bistabile (On/Off)	Alimentazione on/off (nessuna corrente di standby)
[Deutsch]	Schalter (Ein- und Ausschalten durch Drücken)	Ein- und Ausschalten (ohne Ruhestromaufnahme)
[Español]	Interruptor (pulsado para encendido/apagado)	Encendido/apagado (sin corriente en espera)
[Nederlands]	Schakelaar (Push-On/Push-Off)	Aan-uit (geen stand-byverbruik)
[Türkçe]	Anahtar (Bas-Aç/Bas-Kapa)	Güç açık/kapalı (bekleme akımı yok)



[English]	Heat hazard	Heat hazard
[Français]	Danger de chaleur	Danger de chaleur
[Italiano]	Pericolo: temperature elevate	Pericolo: temperature elevate
[Deutsch]	Überhitzungsgefahr	Überhitzungsgefahr
[Español]	Peligro de calentamiento	Peligro de calentamiento
[Nederlands]	Verbrandingsgevaar	Verbrandingsgevaar
[Türkçe]	Isı tehlikesi	Isı tehlikesi



[English]	Class II equipment	Indicates this is Class II equipment
[Français]	Équipement de classe II	Indique qu'il s'agit d'un équipement de classe II
[Italiano]	Apparecchio classe II	Indica che questo è un apparecchio di classe II
[Deutsch]	Gerät der Schutzklasse II	Gibt an, dass das Gerät der Schutzklasse II entspricht
[Español]	Equipo de clase II	Indica que se trata de un equipo de clase II
[Nederlands]	Klassell-apparatuur	Geeft aan dat deze apparatuur in Klasse II hoort
[Türkçe]	Sınıf II ekipman	Bunun Sınıf II ekipman olduğunu gösterir



[English]	DC symbol	Indicates direct current
[Français]	Symbole CC	Indique qu'il s'agit de courant continu
[Italiano]	Simbolo corrente continua (C.C.)	Indica la corrente continua
[Deutsch]	Gleichstrom-Symbol	Kennzeichnet Gleichstrom
[Español]	Símbolo CC	Indica corriente continua
[Nederlands]	DC-pictogram	Geeft gelijkstroom aan
[Türkçe]	DC sembolü	Düz akımı gösterir



[English]	DC polarity	Indicates the power plug polarity
[Français]	Polarité CC	Indique la polarité de la fiche d'alimentation
[Italiano]	Polarità C.C.	Indica la polarità dello spinotto di alimentazione
[Deutsch]	Gleichstrompolarität	Gibt die Polarität des Netzsteckers an
[Español]	Polaridad de CC	Indica la polaridad del conector de alimentación
[Nederlands]	DC-polariteit	Geeft de polariteit van de stekker aan
[Türkçe]	DC polaritesi	Fiş polaritesini gösterir



[English]	Electrostatic precaution	Avoid applying static electricity to the machine
[Français]	Précaution électrostatique	Évitez de soumettre cette machine à de l'électricité statique
[Italiano]	Protezione dalle cariche elettrostatiche	Evitare di applicare cariche elettrostatiche alla macchina
[Deutsch]	Warnung vor elektrostatischer Aufladung	Elektrostatische Aufladung der Maschine vermeiden
[Español]	Precaución electroestática	No aplique electricidad electroestática
[Nederlands]	Elektrostatische voorzorgen	Voorkom statische elektriciteit op de machine
[Türkçe]	Elektrostatik önlemi	Makineye statik elektrik vermeyin



CANON ELECTRONICS INC.

3-5-10 SHIBAKOEN, MINATO-KU, TOKYO 105-0011, JAPAN

CANON U.S.A. INC.

ONE CANON PARK, MELVILLE, NY 11747, U.S.A.

CANON CANADA INC.

8000 MISSISSAUGA ROAD, BRAMPTON, ONTARIO L6Y 5Z7, CANADA

CANON EUROPA N.V.

BOVENKERKERWEG 59, 1185 XB AMSTELVEEN, THE NETHERLANDS

CANON AUSTRALIA PTY. LTD.

BUILDING A, THE PARK ESTATE, 5 TALAVERA ROAD, MACQUARIE PARK, NSW 2113, AUSTRALIA

CANON SINGAPORE PTE. LTD.

1 FUSIONOPOLIS PLACE, #15-10, GALAXIS, SINGAPORE 138522

CANON INDIA PVT. LTD

7TH FLOOR, TOWER B DLF CYBER TERRACES DLF PHASE III GURGAON-122002 HARYANA, INDIA