



**macOS**

**UFR II/UFRII LT/LIPSLX/PS Printer Driver**

# **User's Guide**

# Contents

<b>Introduction</b> .....	2
<b>How to Use the Manual</b> .....	3
Notations Used in the Manual .....	4
<b>Disclaimers</b> .....	5
<b>Copyright</b> .....	6
<b>Trademarks</b> .....	7
<b>Before Use</b> .....	9
<b>Installing the Driver</b> .....	11
<b>Preparations for Using the Driver</b> .....	12
<b>Pre-installation Check</b> .....	13
System Requirements .....	14
About the Readme File .....	15
<b>Installing the Driver</b> .....	16
<b>Registering a Printer</b> .....	17
Registering a Printer Connected by TCP/IP .....	18
Registering a Printer Connected by USB .....	21
Registering a Printer Connected by Bonjour .....	24
<b>Setting the Options of the Device</b> .....	27
Enabling Automatic Setting of the Options of the Device .....	28
Manually Setting the Options of the Device .....	31
<b>Uninstalling a Driver</b> .....	33
<b>Printing</b> .....	36
<b>Printing from an Application</b> .....	37
<b>Arranging Multiple Pages on One Sheet of Paper</b> .....	38
<b>Overlapping Forms</b> .....	39
<b>Holding a Print Job</b> .....	41
<b>Attaching a PIN to Print Data</b> .....	42
<b>Setting the Authentication Function</b> .....	43
<b>Saving Print Data in a Box in the Device</b> .....	45
<b>Suspend Currently Printing Jobs to Prioritize a Print Job</b> .....	46
<b>Prioritizing a Print Job Over Other Print Jobs</b> .....	47
<b>Registering Presets</b> .....	48
<b>Setting User Information from a Printer Utility</b> .....	49
<b>Creating a Booklet</b> .....	51
<b>Booklet Printing</b> .....	52
<b>Correcting Booklet Printing Displacement</b> .....	53

Saddle Stitched Booklet Printing .....	54
Trimming Pages When Creating Saddle Stitched Booklets .....	55
Saddle Press Processing When Creating Saddle Stitched Booklets .....	56
Perfect Binding Booklet Printing .....	57

## Using Various Types of Paper ..... 59

Registering Custom Paper Sizes .....	60
Inserting Sheets .....	61
Inserting Sheets Between Transparencies .....	62
Print on the Tab of Tab Paper .....	63

## Settings List ..... 65

[Paper Source] Panel .....	66
[Finishing] Panel .....	68
[Quality] Panel .....	73
[Special Features] Panel .....	78
[Basic] Panel .....	80
[Authenticate and Print] Panel .....	81
[Advanced] Panel .....	82
Printer Utility Settings .....	83

## Troubleshooting ..... 87

Cannot Register a Device Connected by Bonjour .....	88
Printing is Slow .....	89

# Introduction

<b>Introduction</b> .....	2
<b>How to Use the Manual</b> .....	3
Notations Used in the Manual .....	4
<b>Disclaimers</b> .....	5
<b>Copyright</b> .....	6
<b>Trademarks</b> .....	7

# Introduction

---

- ▶ **How to Use the Manual(P. 3)**
- ▶ **Disclaimers(P. 5)**
- ▶ **Copyright(P. 6)**
- ▶ **Trademarks(P. 7)**

## How to Use the Manual

---

This explains things that you need to know in order to use this manual.

▶ **Notations Used in the Manual(P. 4)**

# Notations Used in the Manual

---

This explains symbols and settings used in this manual.

## Symbols Used in This Manual

In this manual, explanations of items and operations that must be followed while using the driver are set forth the symbols that indicate the following.

 **IMPORTANT**

- Indicates operational requirements and restrictions. Be sure to read these items carefully to operate the product correctly, and avoid damage to the product.

 **NOTE**

- Indicates a clarification of an operation, or contains additional explanations for a procedure. Reading these notes is highly recommended.

## About Settings

In this manual, setting names displayed on the computer screen are represented as shown in the following examples.

Example:

[Print]

[OK]

## Disclaimers

---

The information in this document is subject to change without notice.

CANON INC. MAKES NO WARRANTY OF ANY KIND WITH REGARD TO THIS MATERIAL, EITHER EXPRESS OR IMPLIED, EXCEPT AS PROVIDED HEREIN, INCLUDING WITHOUT LIMITATION, THEREOF, WARRANTIES AS TO MARKETABILITY, MERCHANTABILITY, FITNESS FOR A PARTICULAR PURPOSE OF USE OR NON-INFRINGEMENT. CANON INC. SHALL NOT BE LIABLE FOR ANY DIRECT, INCIDENTAL, OR CONSEQUENTIAL DAMAGES OF ANY NATURE, OR LOSSES OR EXPENSES RESULTING FROM THE USE OF THIS MATERIAL.



## Copyright

---

Copyright CANON INC. 2018

No part of this publication may be reproduced, transmitted, transcribed, stored in a retrieval system, or translated into any language or computer language in any form or by any means, electronic, mechanical, magnetic, optical, chemical, manual, or otherwise, without the prior written permission of Canon Inc.

## Trademarks

---

Microsoft and Windows are either registered trademarks or trademarks of Microsoft Corporation in the United States and/or other countries.

Apple, Mac, macOS, OS X, and Macintosh are trademarks of Apple Inc.

Other product and company names herein may be the trademarks of their respective owners.

# Before Use

**Before Use** ..... 9

## Before Use

---

- The newest driver versions are released on the Canon website. You can download them as necessary after checking your operating environment.  
Canon website: <http://www.canon.com/>
- The functions that you can use may vary according to the following conditions.
  - The device you are using and its configuration
  - The device firmware version
  - The option structure of the device
  - The driver you are using
  - The driver version
  - The environment of the computer you are using
  - The application you are using
- There may be instances where the illustrations of displays and content of procedures in this manual differ from what is actually displayed.
- The descriptions in this manual use examples from macOS 10.12 (Sierra).

# Installing the Driver

<b>Installing the Driver</b> .....	11
<b>Preparations for Using the Driver</b> .....	12
<b>Pre-installation Check</b> .....	13
System Requirements .....	14
About the Readme File .....	15
<b>Installing the Driver</b> .....	16
<b>Registering a Printer</b> .....	17
Registering a Printer Connected by TCP/IP .....	18
Registering a Printer Connected by USB .....	21
Registering a Printer Connected by Bonjour .....	24
<b>Setting the Options of the Device</b> .....	27
Enabling Automatic Setting of the Options of the Device .....	28
Manually Setting the Options of the Device .....	31
<b>Uninstalling a Driver</b> .....	33

## Installing the Driver

---

This section explains driver installation and device preparation.

- ▶ **Preparations for Using the Driver(P. 12)**
- ▶ **Pre-installation Check(P. 13)**
- ▶ **Installing the Driver(P. 16)**
- ▶ **Registering a Printer(P. 17)**
- ▶ **Setting the Options of the Device(P. 27)**
- ▶ **Uninstalling a Driver(P. 33)**

## Preparations for Using the Driver

---

Before using the driver and printing, there are preparations that need to be done beforehand.

Carry out preparations and settings in the following order.

1. Obtain an installer by one of the following methods.
  - Download it from the Canon website (<http://www.canon.com/>)
  - Supplied CD-ROM
2. Install the driver to the operating system.
3. Register the printer you want to use to the operating system.
4. Set the device options as necessary.



### NOTE

- You can check the version of the installed driver in the [Special Features] or [Basic] panel.

## Related Topics

---

- ▶ **Installing the Driver(P. 16)**
- ▶ **Registering a Printer Connected by TCP/IP(P. 18)**
- ▶ **Registering a Printer Connected by USB(P. 21)**
- ▶ **Registering a Printer Connected by Bonjour(P. 24)**
- ▶ **Enabling Automatic Setting of the Options of the Device(P. 28)**
- ▶ **Manually Setting the Options of the Device(P. 31)**

## Pre-installation Check

---

This describes the items to be checked beforehand in order to install the driver correctly.

- ▶ **System Requirements(P. 14)**
- ▶ **About the Readme File(P. 15)**



## System Requirements

---

Use one of the following system environments with this driver.

### Operating Systems

Mac OS X 10.9.5 or later

### Hardware

A computer guaranteed to operate using the above operating system.

## About the Readme File

---

The following content is contained in the Readme file.

- Limitations, restrictions, and cautions when installing or using the driver
- Devices that support the driver

Refer to README-ENG.html in the accompanying CD-ROM or the downloaded driver folder.

# Installing the Driver

---

This section explains the procedure for installing the driver to the operating system.

Install the driver and register the printer to use.

## Prerequisites

---

- Obtain the driver installer.
- **System Requirements(P. 14)**
- Close all running applications.
- If the computer and device are connected by USB, turn off the main power of the device.

## Procedures

---

### 1 Open the driver installer folder → select one of the following.

- [UFRII\_LT\_LIPS\_LX\_Installer.pkg]
- [Canon\_PS\_Installer.pkg]
- [Canon\_Driver.pkg]

### 2 Read the Software License Agreement → click [Continue].

If a dialog box asking you to confirm that you agree to the Software License Agreement is displayed, click [Agree].

### 3 Click [Install].

If a dialog box for entering a user name and/or password is displayed, enter the name and password of a computer administrator and continue according to the instructions in the dialog box.

### 4 Click [Close].

Register the printer.

## Related Topics

---

- ▶ **Preparations for Using the Driver(P. 12)**
- ▶ **Registering a Printer Connected by TCP/IP(P. 18)**
- ▶ **Registering a Printer Connected by USB(P. 21)**
- ▶ **Registering a Printer Connected by Bonjour(P. 24)**

## Registering a Printer

---

Register the printer you are going to use.

Select a registration method according to the method by which the computer and printer are connected.

- ▶ **Registering a Printer Connected by TCP/IP(P. 18)**
- ▶ **Registering a Printer Connected by USB(P. 21)**
- ▶ **Registering a Printer Connected by Bonjour(P. 24)**

## Registering a Printer Connected by TCP/IP

---

You can register a printer connected by LPD (Line Printer Daemon) in the operating system.

### Prerequisites

---

- **System Requirements(P. 14)**
- **Installing the Driver(P. 16)**
- Confirmation of driver names corresponding to the printer  
For driver names corresponding to printers, refer to the Readme file.
- Confirmation of specified IP address  
If you do not know the IP address, check with the network administrator or check the network settings. For details, refer to the manual of the device.

### Procedures

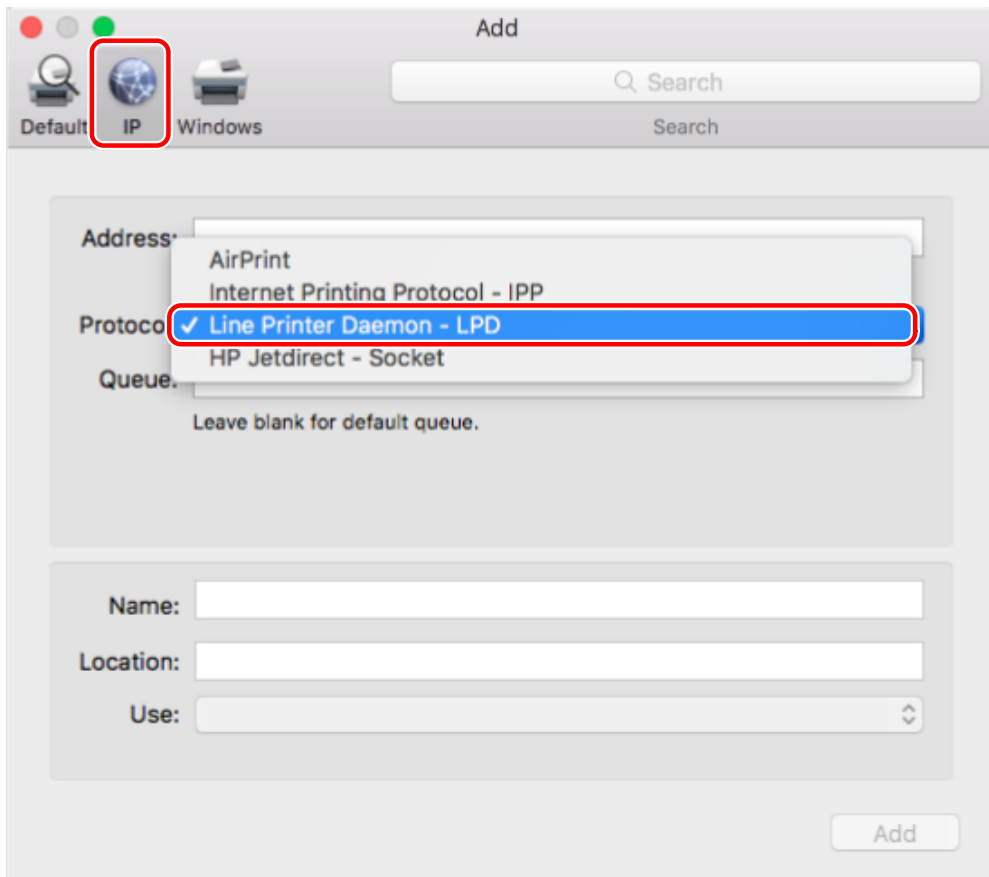
---

- 1 Display the [System Preferences] dialog box of the operating system → click [Printers & Scanners].**
- 2 Click [+] at the bottom of the displayed dialog box.**

If a pull-down menu is displayed after you click [+], select [Add Printer or Scanner].

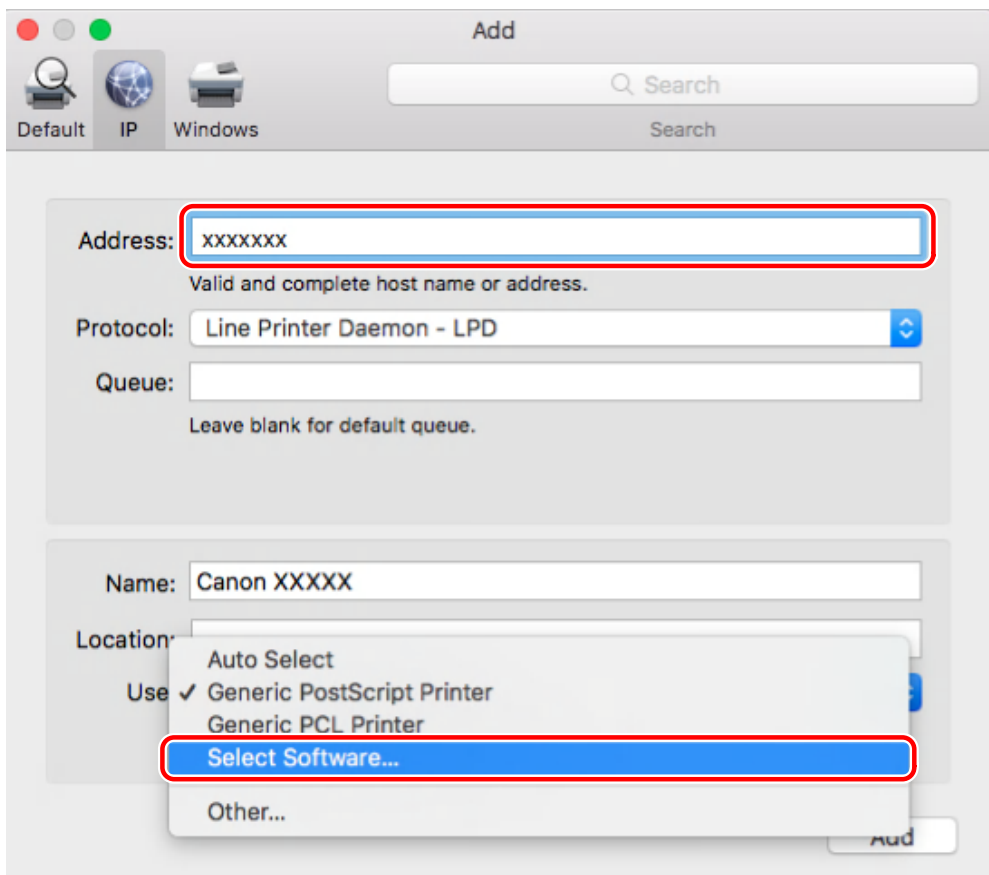


- 3 Select [IP] in the toolbar → select [Line Printer Daemon - LPD] from [Protocol].**



**4** Enter the printer's IP address in [Address] → select [Select Software] from [Use].

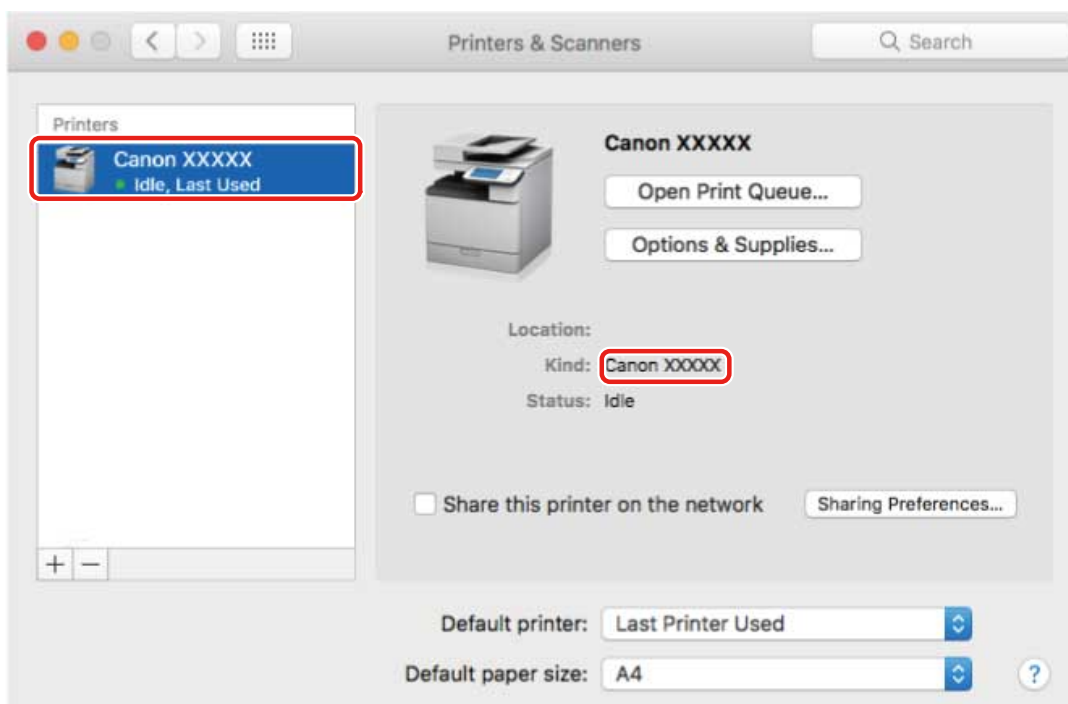
If the driver corresponding to the printer is displayed in [Use], proceed to step 6.(P. 20) .



 **NOTE**

- A message indicating that the IP address is incorrect may be displayed even if the correct IP address has been entered.

- 5** Select the driver corresponding to the printer from the list in the [Printer Software] dialog box → click [OK].
- 6** Change [Name] for the printer as necessary → click [Add].
- 7** Check that the registered printer and model are displayed in the dialog box.



Set the device options as necessary.

## Related Topics

---

- ▶ Preparations for Using the Driver(P. 12)
- ▶ About the Readme File(P. 15)
- ▶ Enabling Automatic Setting of the Options of the Device(P. 28)
- ▶ Manually Setting the Options of the Device(P. 31)

## Registering a Printer Connected by USB

---

You can register a printer connected by USB in the operating system.

### Prerequisites

---

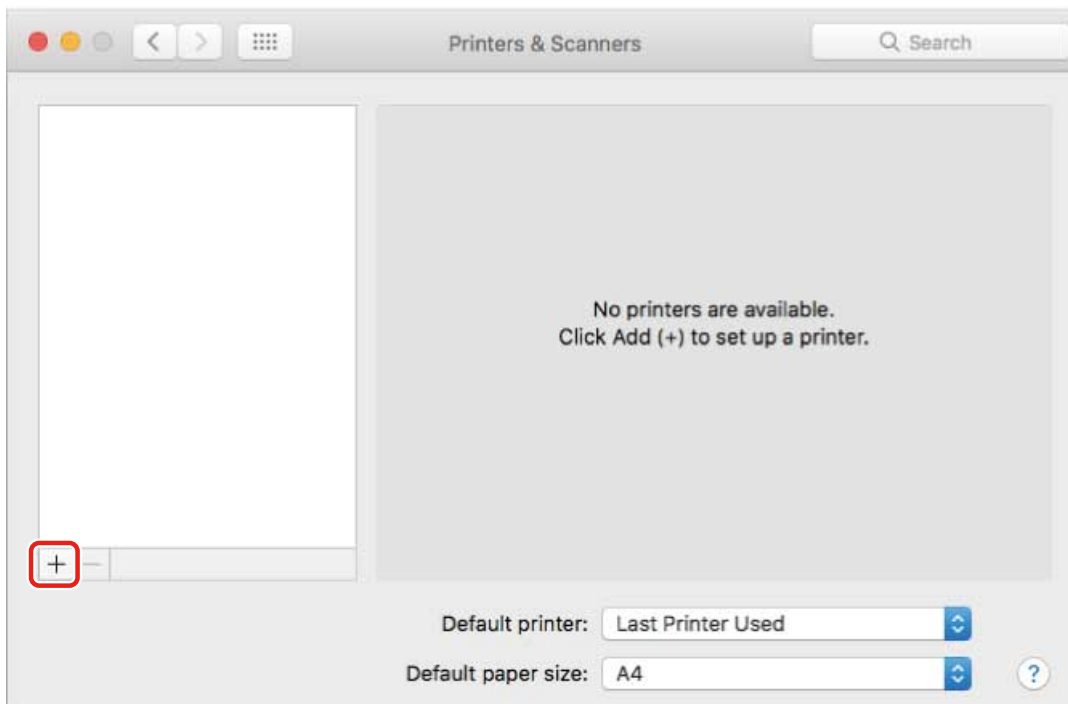
- **System Requirements(P. 14)**
- **Installing the Driver(P. 16)**
- Confirmation of driver names corresponding to the printer  
For driver names corresponding to printers, refer to the Readme file.
- Installation of the optional USB interface board (if required with the printer you are using)

### Procedures

---

- 1 Display the [System Preferences] dialog box of the operating system → click [Printers & Scanners].**
- 2 Turn the printer on → connect the printer and the computer by USB cable.**
- 3 Click [+] at the bottom of the displayed dialog box.**

If a pull-down menu is displayed after you click [+], select [Add Printer or Scanner].

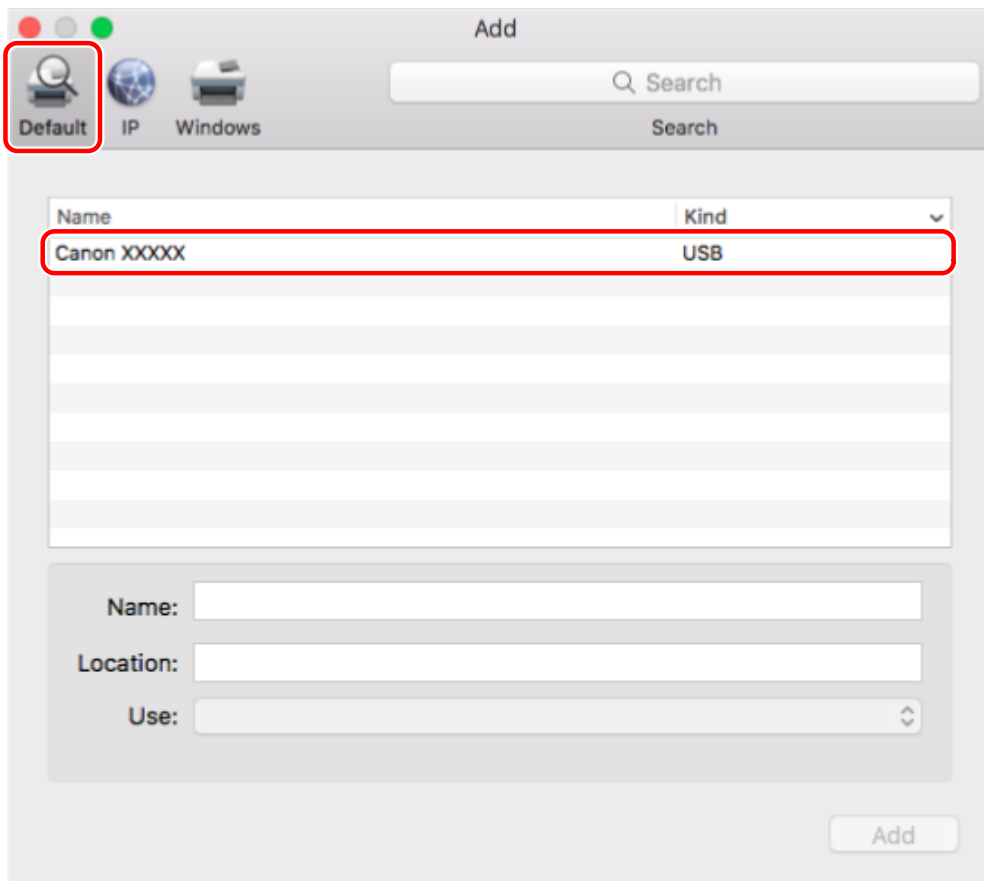


- 4 Select [Default] in the toolbar → select a printer from the list.**

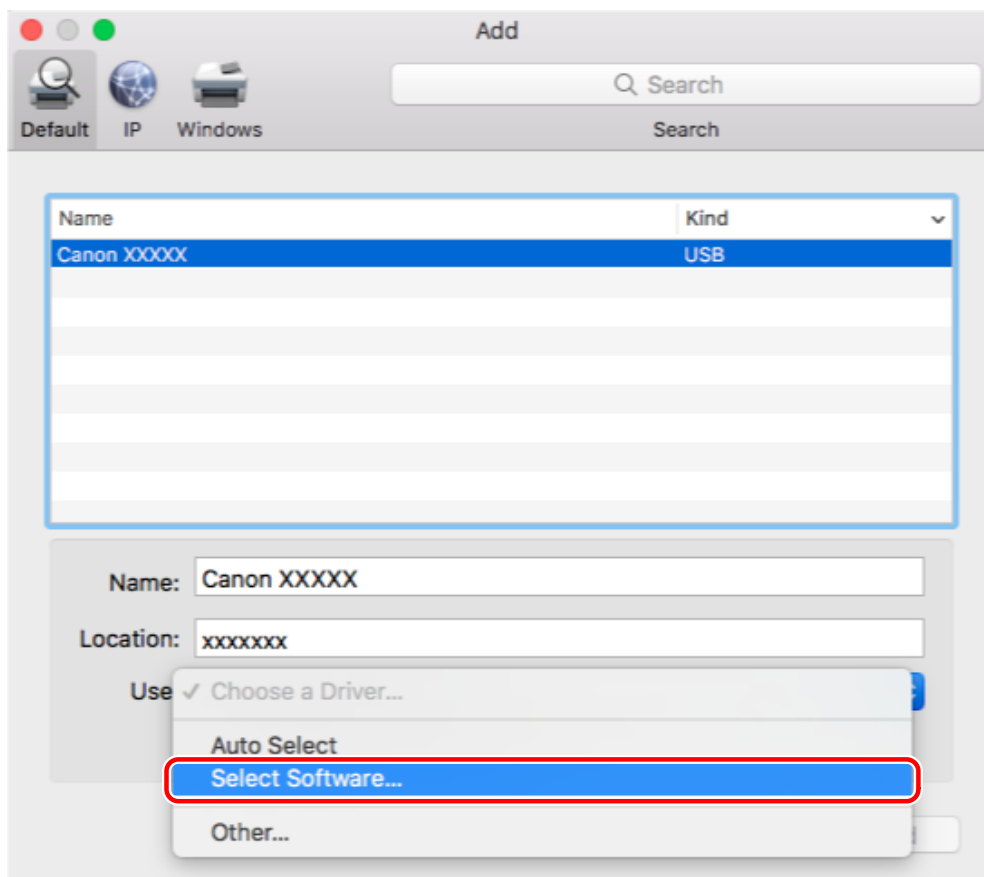


## Installing the Driver

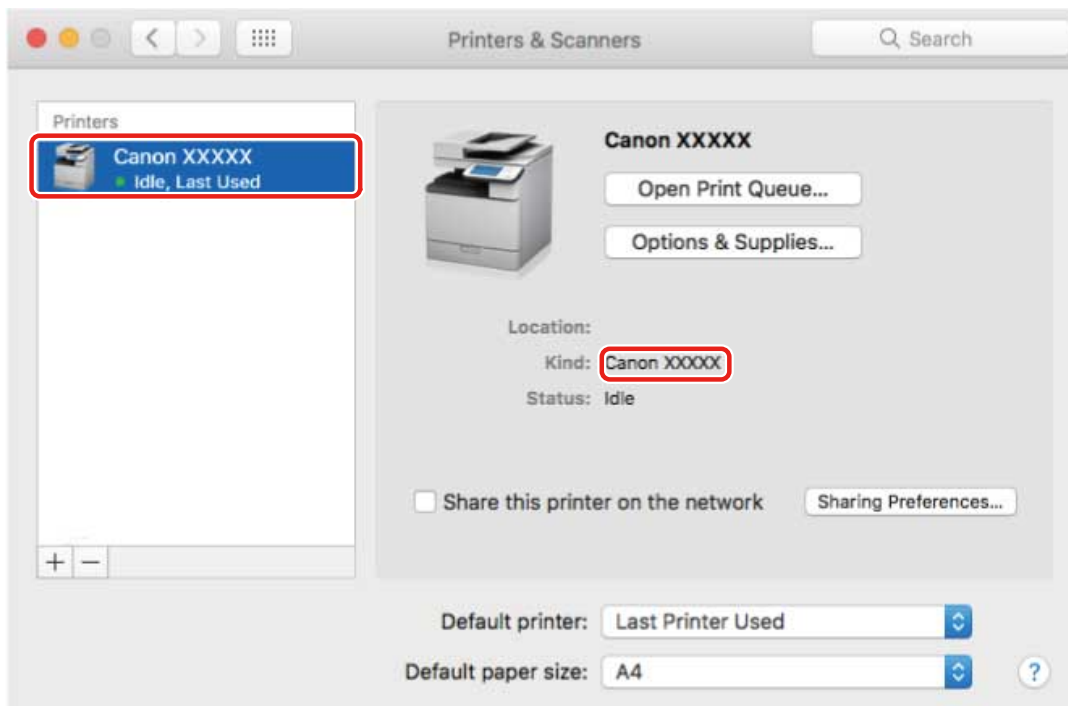
Select a printer displayed as "USB" in [Kind].



### 5 Select [Select Software] from [Use].



- 6** Select the driver corresponding to the printer from the list in the [Printer Software] dialog box → click [OK].
- 7** Change [Name] for the printer as necessary → click [Add].
- 8** Check that the registered printer and model are displayed in the dialog box.



Set the device options as necessary.

## Related Topics

---

- ▶ Preparations for Using the Driver(P. 12)
- ▶ About the Readme File(P. 15)
- ▶ Enabling Automatic Setting of the Options of the Device(P. 28)
- ▶ Manually Setting the Options of the Device(P. 31)

## Registering a Printer Connected by Bonjour

---

You can register a printer connected by Bonjour to the operating system.

### Prerequisites

---

- **System Requirements(P. 14)**
- **Installing the Driver(P. 16)**
- Confirmation of driver names corresponding to the printer  
For driver names corresponding to printers, refer to the Readme file.

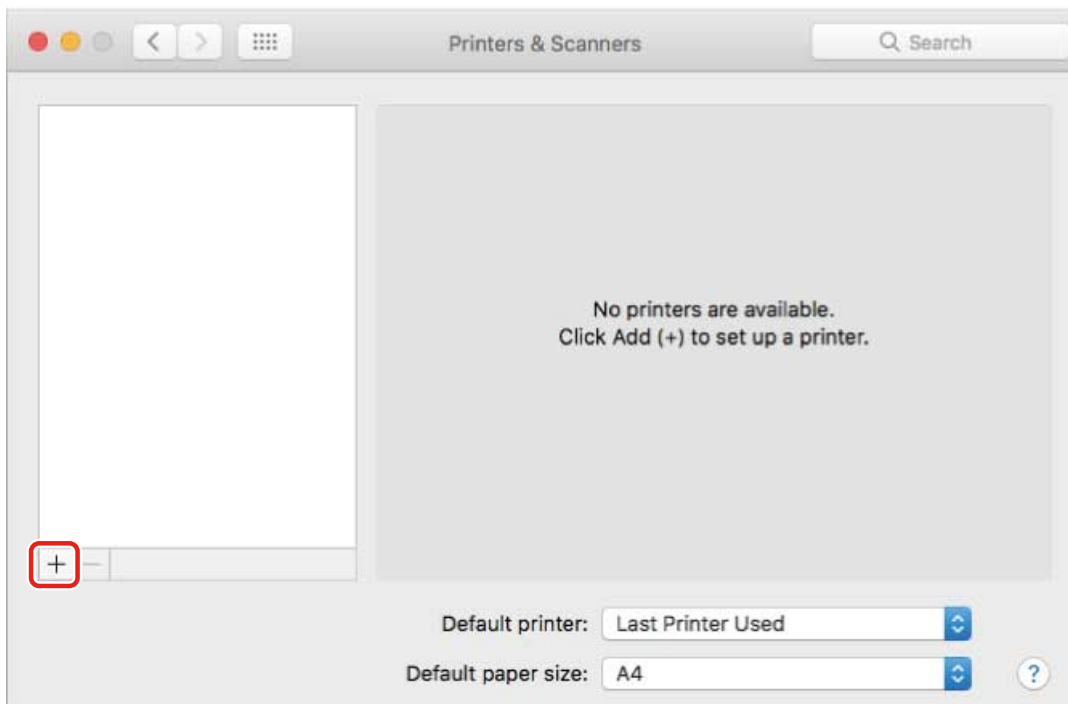
### Procedures

---

**1** Display the [System Preferences] dialog box of the operating system → click [Printers & Scanners].

**2** Click [+] at the bottom of the displayed dialog box.

If a pull-down menu is displayed after you click [+], select [Add Printer or Scanner].

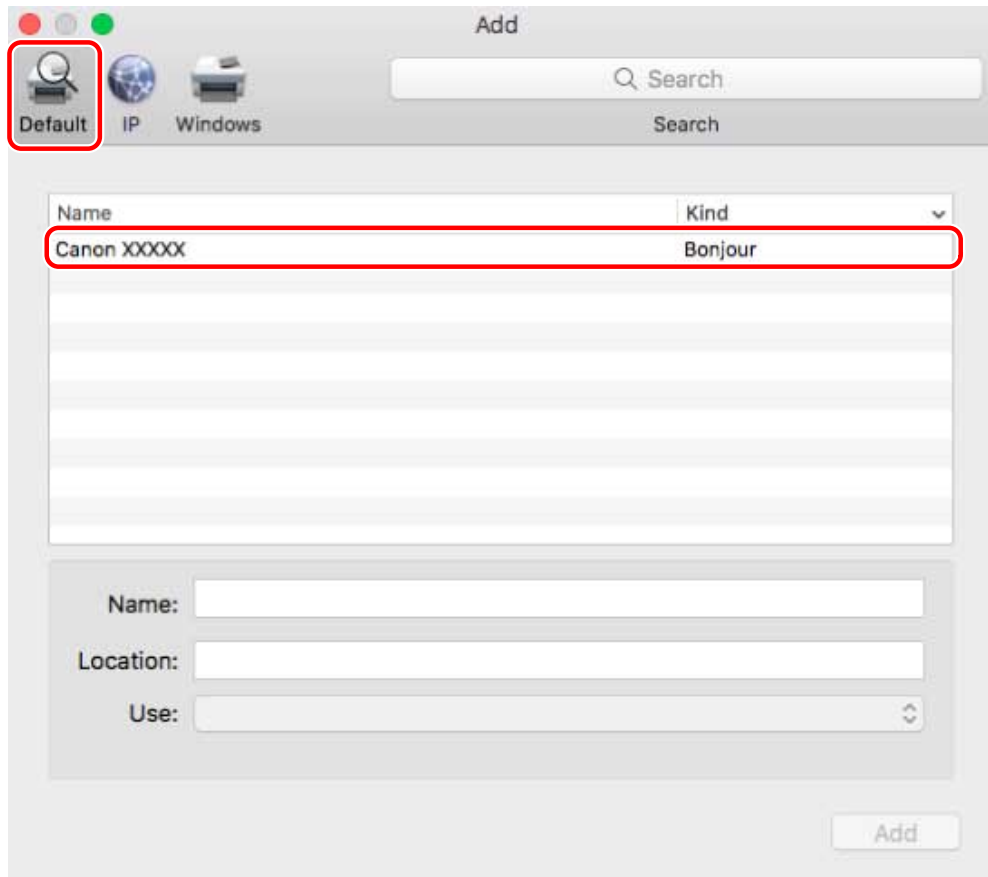


**3** Select [Default] in the toolbar → select a printer from the list.

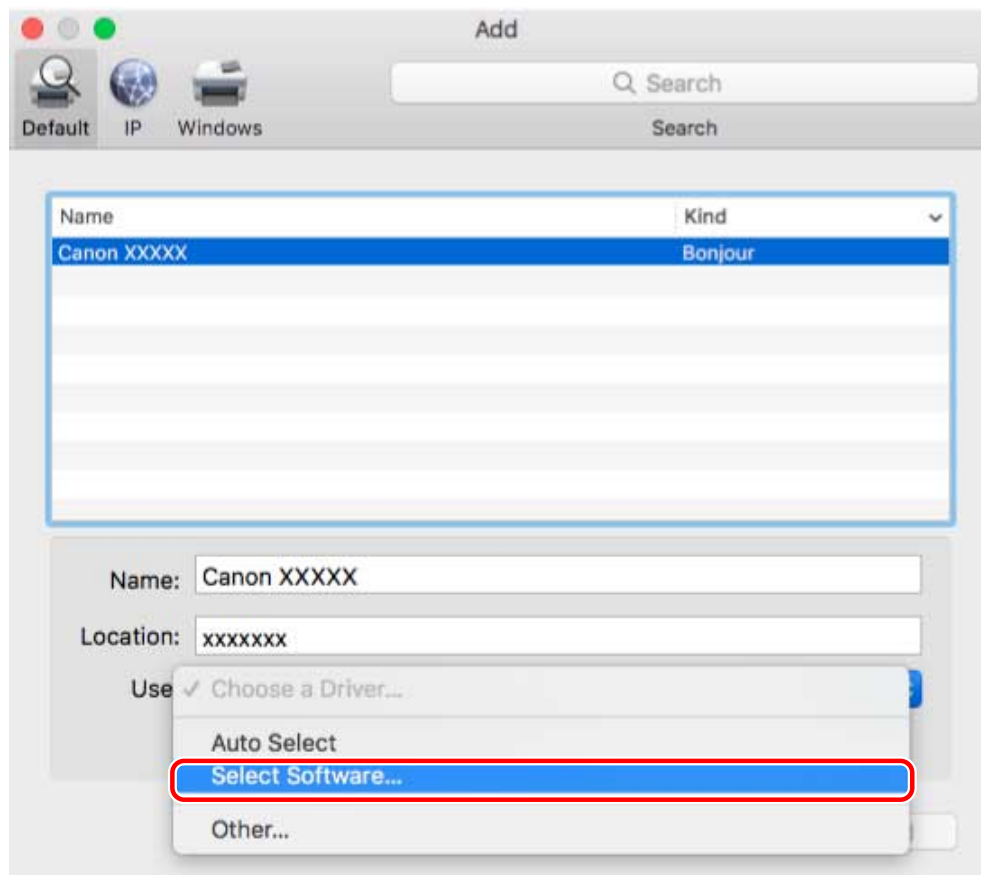
Select a printer displayed as "Bonjour" in [Kind].

If the corresponding driver is already registered in [Use] in the displayed dialog box, proceed to step 7. (P. 26) .

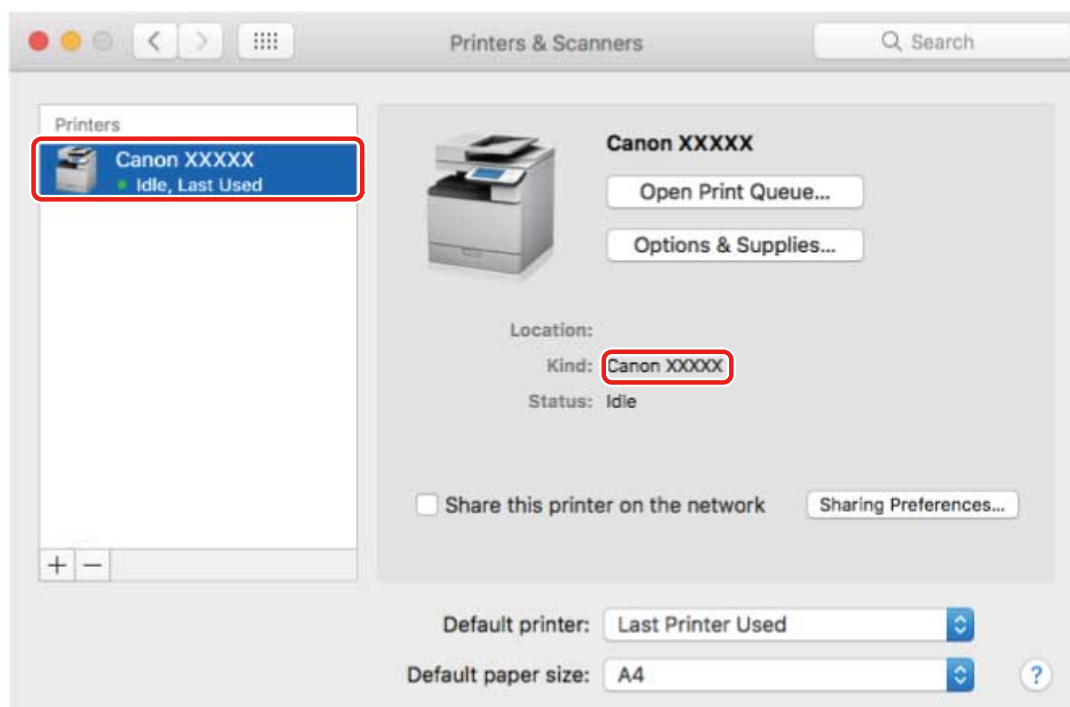
## Installing the Driver



### 4 Select [Select Software] from [Use].



- 5** Select the driver corresponding to the printer from the list in the [Printer Software] dialog box → click [OK].
- 6** Change [Name] for the printer as necessary → click [Add].
- 7** Check that the registered printer and model are displayed in the dialog box.



Set the device options as necessary.

## Related Topics

---

- ▶ Preparations for Using the Driver(P. 12)
- ▶ About the Readme File(P. 15)
- ▶ Enabling Automatic Setting of the Options of the Device(P. 28)
- ▶ Manually Setting the Options of the Device(P. 31)

## Setting the Options of the Device

---

You can register, in the driver, the options (such as paper drawers and finishers) installed in the device, and set the functions related to the options so that they can be used by the driver.

When using the device for the first time or adding options to the device, the option information must be registered in the driver.

- ▶ **Enabling Automatic Setting of the Options of the Device(P. 28)**
- ▶ **Manually Setting the Options of the Device(P. 31)**

# Enabling Automatic Setting of the Options of the Device

---

When using a device that supports bi-directional communication, you can set the computer to automatically retrieve the option information of the device using the Office Printer Utility or CUPS PS Printer Utility.

## Prerequisites

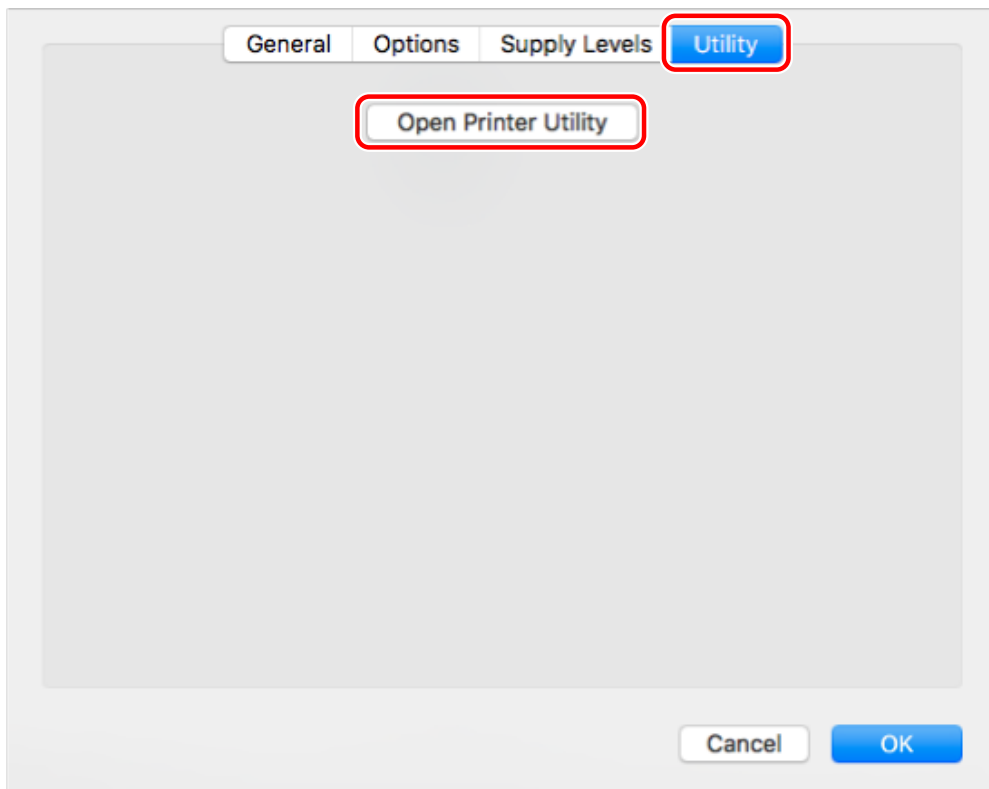
---

- **Installing the Driver(P. 16)**
- **Registering a Printer(P. 17)**
- Confirmation that the device you are using is set to perform duplex communication  
For information on the setting method, refer to the manual of the device.
- Confirmation of driver names corresponding to the device  
For driver names corresponding to devices, refer to the Readme file.

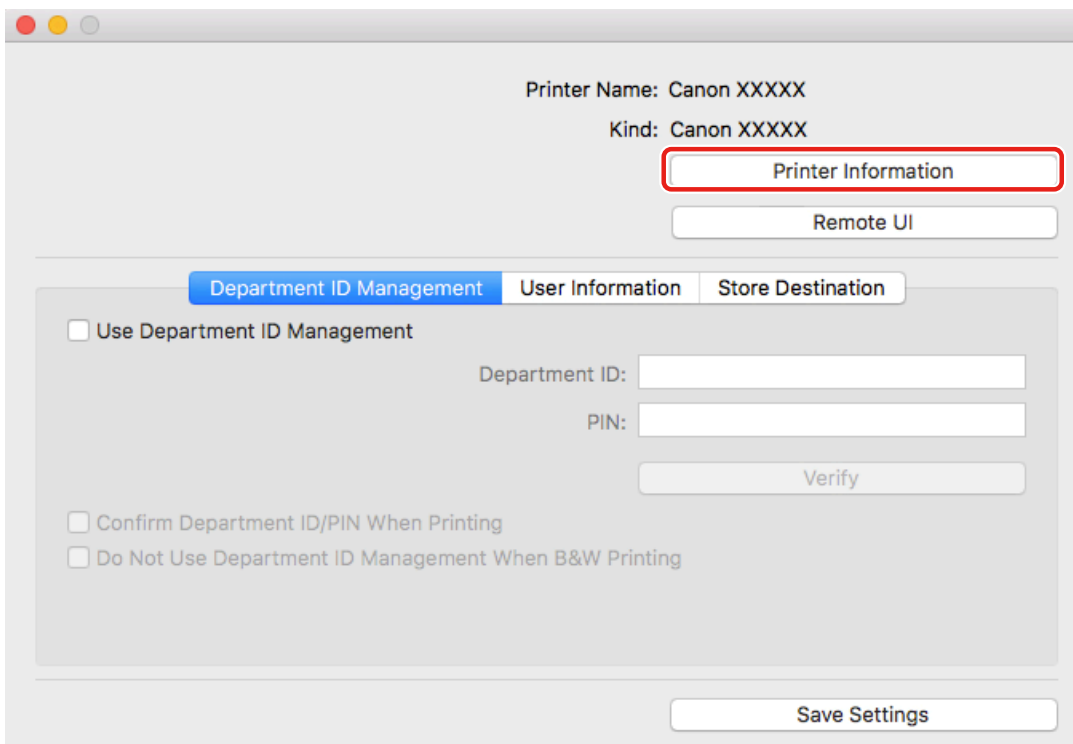
## Procedures

---

- 1 Display the [System Preferences] dialog box of the operating system → click [Printers & Scanners].**
- 2 Select the device → click [Options & Supplies].**
- 3 Select [Utility] from [Options & Supplies] → click [Open Printer Utility].**

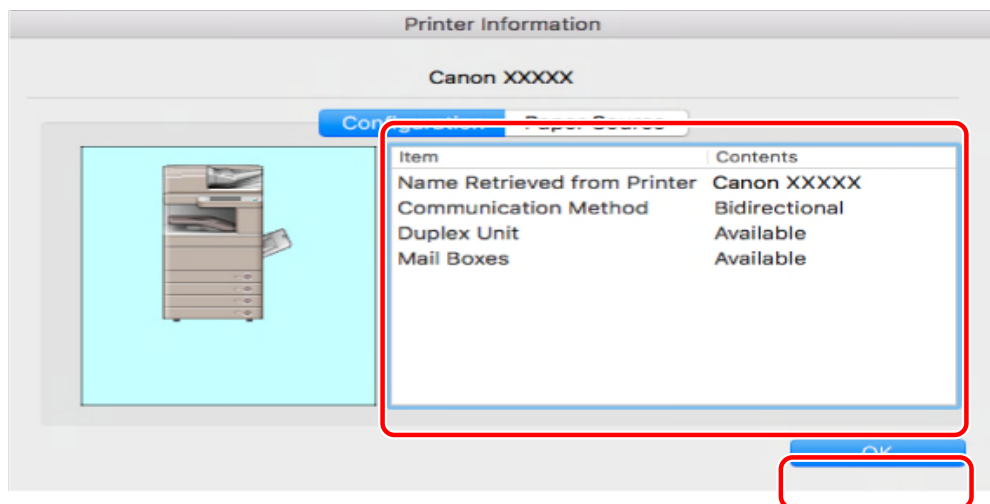


- 4** Click [Printer Information] in the displayed Office Printer Utility or CUPS PS Printer Utility dialog box.



- 5** In the [Printer Information] dialog box, check the device information → click [OK].



**NOTE**

- If the driver name displayed at the top of the [Printer Information] dialog box and the name displayed in [Configuration] > [Name Retrieved from Printer] do not match, you may not be able to use the functions of the device. If this happens, delete the device from the [System Preferences] of the operating system and register the device again.

## Related Topics

---

- ▶ Preparations for Using the Driver(P. 12)
- ▶ About the Readme File(P. 15)
- ▶ Registering a Printer Connected by TCP/IP(P. 18)
- ▶ Registering a Printer Connected by USB(P. 21)
- ▶ Registering a Printer Connected by Bonjour(P. 24)
- ▶ Manually Setting the Options of the Device(P. 31)

## Manually Setting the Options of the Device

---

If the device is connected by uni-directional communication, the options of the device must be set manually.

### Prerequisites

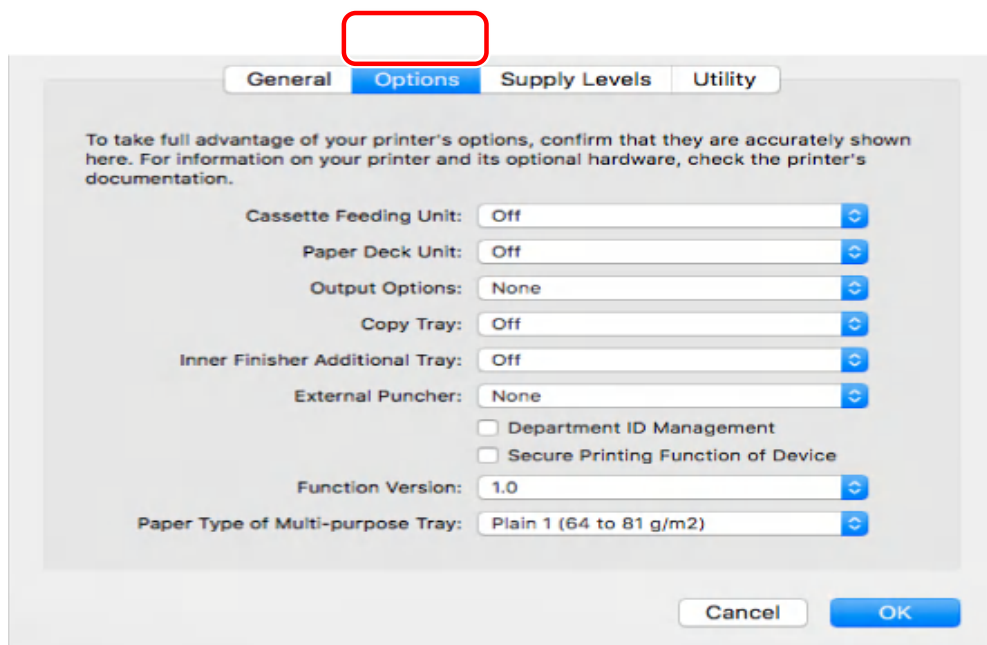
---

- **Installing the Driver(P. 16)**
- **Registering a Printer(P. 17)**
- Confirmation of driver names corresponding to the device  
For driver names corresponding to devices, refer to the Readme file.

### Procedures

---

- 1** Display the [System Preferences] dialog box of the operating system → click [Printers & Scanners].
- 2** Select the device → click [Options & Supplies].
- 3** Click [Options].



- 4** In the displayed dialog box, check the options of the device → click [OK].



NOTE

- Select only the options that are actually installed in the device.
- Set [Function Version] to the version displayed on the configuration page printed from the control panel of the device.
- Select the version of the platform installed in the device in [Platform Version]. If [Platform Version] is not set correctly, some print settings may not be able to be used.  
Confirm [Platform Version] in the control panel of the device.
- For information on operating the device, check the manual of the device.

### Related Topics

---

- ▶ **Preparations for Using the Driver(P. 12)**
- ▶ **About the Readme File(P. 15)**
- ▶ **Registering a Printer Connected by TCP/IP(P. 18)**
- ▶ **Registering a Printer Connected by USB(P. 21)**
- ▶ **Registering a Printer Connected by Bonjour(P. 24)**
- ▶ **Enabling Automatic Setting of the Options of the Device(P. 28)**

## Uninstalling a Driver

This explains the procedure for uninstalling a driver that is no longer needed.

### Prerequisites

- When connected by USB, removal of the USB cable connecting the device and the computer
- Confirmation of the device name to be deleted

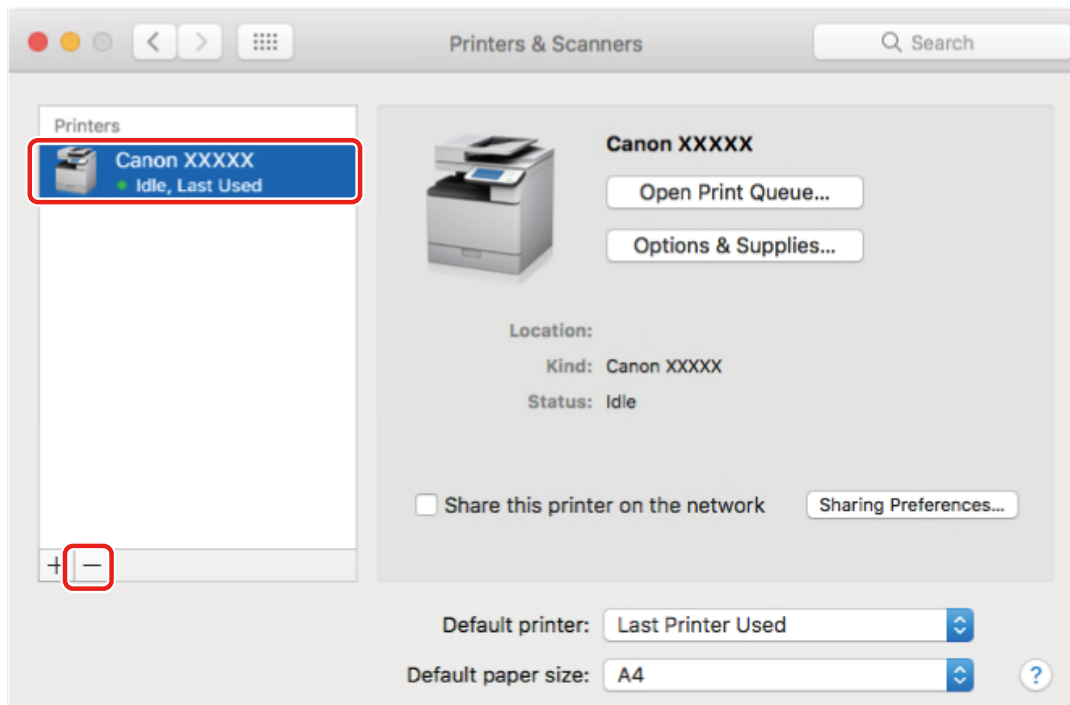


#### NOTE

- The driver can be upgraded. It is not necessary to uninstall the old driver.

### Procedures

- 1 Display the [System Preferences] dialog box of the operating system → click [Printers & Scanners].
- 2 Select the device to be uninstalled → click [-] displayed at the bottom of the dialog box.



- 3 Delete the files of the driver to be uninstalled in the following folders of the operating system.

If a confirmation dialog box is displayed, enter an administrator name and password and click [OK].

The name represented by "\*\*\*\*" varies according to the device.

**For the UFR II/UFRII LT/LIPSLX Printer Driver**

## Installing the Driver

- Library/Printers/Canon/CUPS\_Printer
- Library/Printers/PPDs/Contents/Resources/CNPZU\*\*\*\*ZU.ppd.gz
- usr/libexec/cups/backend/canonoipnetzu

### **For the PS Printer Driver**

- Library/Printers/Canon/CUPSPS2
- Library/Printers/PPDs/Contents/Resources/CNMC\*\*\*\*S2.ppd.gz
- usr/libexec/cups/backend/canonoipnets2

## **4 Restart the operating system.**

# Printing

<b>Printing</b> .....	36
<b>Printing from an Application</b> .....	37
<b>Arranging Multiple Pages on One Sheet of Paper</b> .....	38
<b>Overlapping Forms</b> .....	39
<b>Holding a Print Job</b> .....	41
<b>Attaching a PIN to Print Data</b> .....	42
<b>Setting the Authentication Function</b> .....	43
<b>Saving Print Data in a Box in the Device</b> .....	45
<b>Suspend Currently Printing Jobs to Prioritize a Print Job</b> .....	46
<b>Prioritizing a Print Job Over Other Print Jobs</b> .....	47
<b>Registering Presets</b> .....	48
<b>Setting User Information from a Printer Utility</b> .....	49

# Printing

---

- ▶ **Printing from an Application(P. 37)**
- ▶ **Arranging Multiple Pages on One Sheet of Paper(P. 38)**
- ▶ **Overlapping Forms(P. 39)**
- ▶ **Holding a Print Job(P. 41)**
- ▶ **Attaching a PIN to Print Data(P. 42)**
- ▶ **Setting the Authentication Function(P. 43)**
- ▶ **Saving Print Data in a Box in the Device(P. 45)**
- ▶ **Suspend Currently Printing Jobs to Prioritize a Print Job(P. 46)**
- ▶ **Prioritizing a Print Job Over Other Print Jobs(P. 47)**
- ▶ **Registering Presets(P. 48)**
- ▶ **Setting User Information from a Printer Utility(P. 49)**

# Printing from an Application

This explains the basic procedure for displaying the print dialog box of the driver and printing from an application.

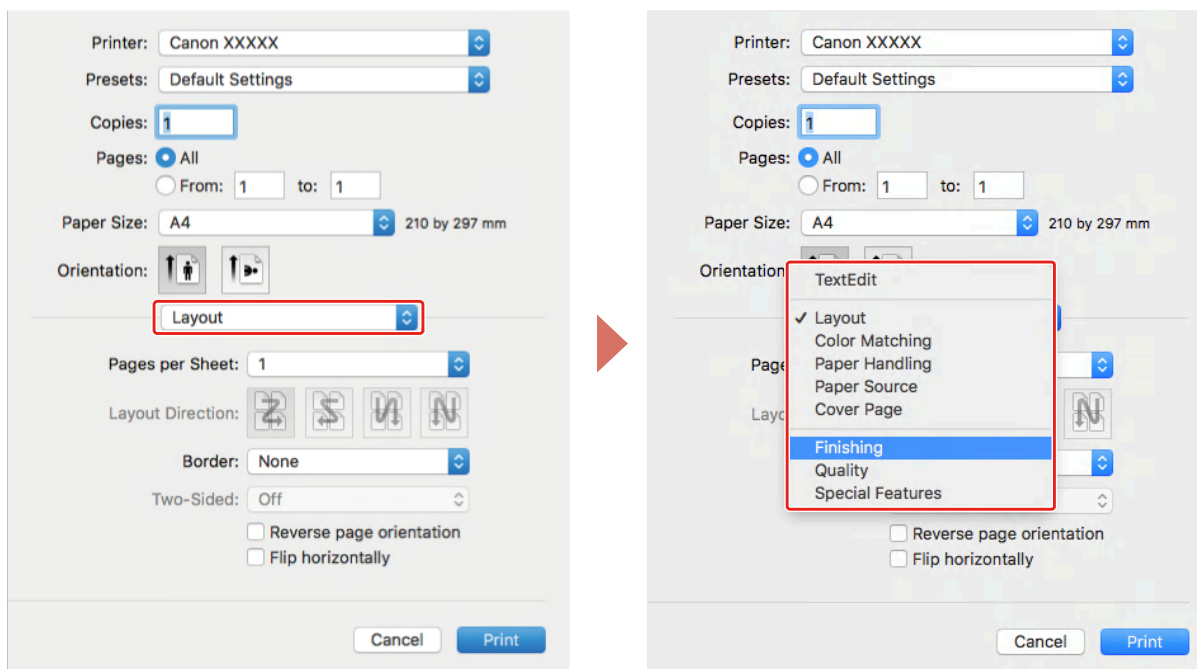
 **NOTE**

- [Printer Features] may be displayed in the popup menu, depending on the application you are using. In this case, switch [Feature Sets] on the [Printer Features] panel to display the items to set.

**1** Select [Print] from the application's [File] menu.

**2** Select a device from [Printer] → select the panel from the pop-up menu and set the necessary items.

If no print options are displayed, click [Show Details] at the bottom of the dialog box.



 **NOTE**

- If the functions you want to use are not displayed in the print options, enable the device options etc., then configure the print settings.

**3** Click [Print].

## Related Topics

-  Preparations for Using the Driver(P. 12)



## Arranging Multiple Pages on One Sheet of Paper

---

This section explains the procedure for printing multiple pages on a single sheet of paper.

Select the direction you want to arrange the pages in on the paper and print borders around the arranged pages.

**1** Select **[Layout]** from the pop-up menu.

**2** Select the number of pages to be arranged on each sheet of paper from **[Pages per Sheet]**.

For detailed settings such as the direction in which the pages are arranged, printing borders around each page, etc., perform the following procedure.

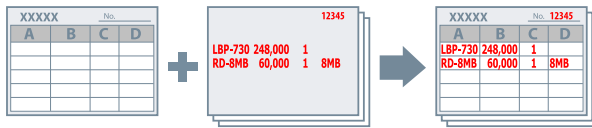
**3** Select what direction the pages are to be arranged in from **[Layout Direction]**.

**4** Select the type of border from **[Border]**.

**5** Select the binding location when performing two-sided printing from **[Two-Sided]**.

## Overlapping Forms

The function for printing data overlapping a fixed form stored in the device is known as overlay printing.



Fixed form information saved to the device in advance can be recalled in the operating system and printed in combination with overlapping print data.

Perform overlay printing in the following order.

1. **To Save a Fixed Form in the Device(P. 39)**
2. **To Retrieve the Saved Form File Information(P. 39)**
3. **To Perform Overlay Printing(P. 40)**

### To Save a Fixed Form in the Device

After creating a fixed form beforehand, you can carry out the following procedure and at the end click [Print] in the print dialog box to save the fixed form in the device.

- 1 Select [Special Features] from the pop-up menu.**
- 2 Click [Page Options].**
- 3 Select [Create Form File] from [Processing Method] → enter the name of the form in [File Name].**
- 4 Click [OK].**
- 5 Click [Print].**

### To Retrieve the Saved Form File Information

To perform overlay printing, it is necessary to import the form information stored in the device using Office Printer Utility or CUPS PS Printer Utility.

- 1 Display the [System Preferences] dialog box of the operating system → click [Printers & Scanners].**
- 2 Select the device → click [Options & Supplies].**

- 3** Select the [Utility] tab → click [Open Printer Utility].
- 4** In the displayed Office Printer Utility or CUPS PS Printer Utility dialog box, click [Printer Information].
- 5** Click [OK].

## To Perform Overlay Printing

After importing the form information, you can combine it with the print data to be overlaid, and print.

- 1** Select [Special Features] from the pop-up menu.
- 2** Click [Page Options].
- 3** Select [Overlay Printing] from [Processing Method] → select the form to be used from [File List].  
When performing two-sided printing, select the page (front or back) on which the form is to be overlaid from [Application].
- 4** Click [OK].
- 5** Click [Print] in the print dialog box.

## Related Topics

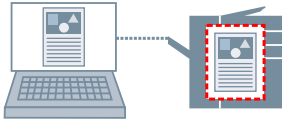
---

- ▶ [Special Features] Panel(P. 78)

## Holding a Print Job

---

You can temporarily save a print job in a hold queue in the device. You can change the print order or settings of stored jobs from the control panel of the device or the Remote UI.



- 1** Select **[Special Features]** from the pop-up menu.
- 2** Select **[Hold]** from **[Job Processing]** → click **[Print]**.
- 3** In the **[Name Settings]** dialog box, enter **[Name of Data to Hold]** → click **[OK]**.

### Related Topics

---

- ▶ **[Special Features] Panel(P. 78)**

## Attaching a PIN to Print Data

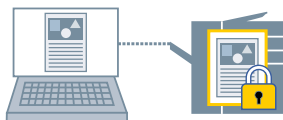
---

You can attach a PIN to print data and save it in the device. This is useful when printing confidential documents etc.



### NOTE

- To use this function, it may be necessary to enable secure printing in the device options in advance, depending on the device model.



**1** Select **[Special Features]** or **[Authenticate and Print]** from the pop-up menu.

**2** Enable **[Secured Print]**.

If **[Job Processing]** is displayed, display the pop-up menu → select **[Secured Print]** → click **[Print]**.

**3** Enter **[Document Name]**, **[User Name]**, and **[PIN]** → click **[OK]**.



### NOTE

- **[Document Name]**, **[User Name]**, and **[PIN]** may not be able to be entered, depending on the application you are using. In this case, enter **[User Name]** and **[PIN]** with the Office Printer Utility or CUPS PS Printer Utility. **[Document Name]** is used as the document name in the print data.

## Related Topics

---

- ▶ **Enabling Automatic Setting of the Options of the Device(P. 28)**
- ▶ **Manually Setting the Options of the Device(P. 31)**
- ▶ **Setting User Information from a Printer Utility(P. 49)**
- ▶ **[Special Features] Panel(P. 78)**
- ▶ **[Authenticate and Print] Panel(P. 81)**
- ▶ **Printer Utility Settings(P. 83)**

## Setting the Authentication Function

You can perform print management by means of the department ID management function or the user authentication function.



### NOTE

- To use this function, enable the authentication function in the device options in advance.
- [Department ID], [PIN], [User Name], and [Password] may not be able to be entered, depending on the application you are using. In this case, set the required items in the Office Printer Utility or CUPS PS Printer Utility.



### Department ID Management

You can perform print management for groups using department IDs and PINs.

- 1 Select [Special Features] or [Authenticate and Print] from the pop-up menu.**
- 2 Enable Department ID Management → enter [Department ID] and [PIN].**

If [User Management] is displayed, display the pop-up menu and select [Department ID Management].

If [Settings] is displayed, click [Settings] → set [Department ID] and [PIN] → click [OK].

### User Authentication Management

You can perform user authentication management using user names and passwords.

- 1 Select [Special Features] from the pop-up menu.**
- 2 Select [User Authentication] from [User Management] → click [Settings].**
- 3 Enter [User Name] and [Password].**

### Related Topics

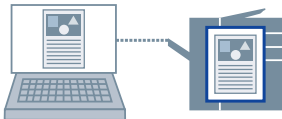
- ▶ [Enabling Automatic Setting of the Options of the Device\(P. 28\)](#)
- ▶ [Manually Setting the Options of the Device\(P. 31\)](#)
- ▶ [Setting User Information from a Printer Utility\(P. 49\)](#)
- ▶ [\[Special Features\] Panel\(P. 78\)](#)

- ▶ **[Authenticate and Print] Panel(P. 81)**
- ▶ **Printer Utility Settings(P. 83)**

## Saving Print Data in a Box in the Device

---

You can save print data in a box in the device. You can change the settings of or combine stored data from the control panel of the device or the Remote UI.



- 1** Select [Special Features] from the pop-up menu.
- 2** Select [Store] from [Job Processing] → click [Print].
- 3** In the [Store Destination] dialog box, enter [Document Name] → select the save destination from [Box].



### NOTE

- [Document Name] and the [Box] to save the data may not be able to be set, depending on the application you are using. In this case, set the [Box] to save the data in the Office Printer Utility or CUPS PS Printer Utility. [Document Name] is used as the document name of the data sent to the box.

- 4** Click [OK].

### Related Topics

---

- ▶ [Setting User Information from a Printer Utility\(P. 49\)](#)
- ▶ [\[Special Features\] Panel\(P. 78\)](#)
- ▶ [Printer Utility Settings\(P. 83\)](#)



## Suspend Currently Printing Jobs to Prioritize a Print Job

---

You can suspend the printing currently being processed by the device and prints the specified job.

This enables you to prioritize another print job when the current printing is taking too long.

The suspended print job is automatically restarted after the inserted job is finished.

- 1** Select **[Special Features]** from the pop-up menu.
- 2** Select **[Interrupt Print]** from **[Job Processing]**.
- 3** Click **[Print]**.

### Related Topics

---

- ▶ [\[Special Features\] Panel\(P. 78\)](#)
- ▶ [Prioritizing a Print Job Over Other Print Jobs\(P. 47\)](#)

## Prioritizing a Print Job Over Other Print Jobs

---

You can prioritize a print job over other print jobs in a state where they are waiting on the device.

If you execute prioritized printing, print jobs being processed on the device are started immediately after the prioritized job is complete.

- 1** Select **[Special Features]** from the pop-up menu.
- 2** Select **[Promote Print]** from **[Job Processing]**.
- 3** Click **[Print]**.

### Related Topics

---

- ▶ **[Special Features] Panel(P. 78)**
- ▶ **Suspend Currently Printing Jobs to Prioritize a Print Job(P. 46)**

## Registering Presets

---

You can register frequently used print settings in [Presets] and recall the settings when printing.

- 1** Select a panel in the pop-up menu and set the functions to register as a preset.
- 2** Select [Save Current Settings as Preset] from [Presets].
- 3** Enter [Preset Name] → select [Preset Available For] → click [OK].

## Setting User Information from a Printer Utility

---

You can set default settings relating to user information (PINs for department ID management and secured printing, and the box number to save the data to, etc.) using the Office Printer Utility or CUPS PS Printer Utility.

- 1** Display the [System Preferences] dialog box of the operating system → click [Printers & Scanners].
- 2** Select the device → click [Options & Supplies].
- 3** Select the [Utility] from [Options & Supplies] → click [Open Printer Utility].
- 4** In the displayed Office Printer Utility or CUPS PS Printer Utility dialog box, set the required items.
- 5** Click [Save Settings].

### Related Topics

---

- ▶ [Printer Utility Settings\(P. 83\)](#)

# Creating a Booklet

<b>Creating a Booklet</b> .....	51
<b>Booklet Printing</b> .....	52
<b>Correcting Booklet Printing Displacement</b> .....	53
<b>Saddle Stitched Booklet Printing</b> .....	54
<b>Trimming Pages When Creating Saddle Stitched Booklets</b> .....	55
<b>Saddle Press Processing When Creating Saddle Stitched Booklets</b> .....	56
<b>Perfect Binding Booklet Printing</b> .....	57

## Creating a Booklet

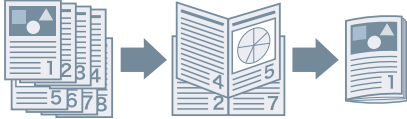
---

- ▶ **Booklet Printing(P. 52)**
- ▶ **Correcting Booklet Printing Displacement(P. 53)**
- ▶ **Saddle Stitched Booklet Printing(P. 54)**
- ▶ **Trimming Pages When Creating Saddle Stitched Booklets(P. 55)**
- ▶ **Saddle Press Processing When Creating Saddle Stitched Booklets(P. 56)**
- ▶ **Perfect Binding Booklet Printing(P. 57)**

# Booklet Printing

---

When folding pages in half, you can automatically arrange and print the pages of a document to create a booklet.



**1** Select [Finishing] from the pop-up menu.

**2** Select "Booklet Printing" from [Print Style].

If [Detailed Settings for Booklet] is displayed, perform the following procedure.

**3** Click [Detailed Settings for Booklet] → select the opening direction when creating the booklet from [Book Opening].

**4** Click [OK].

## Related Topics

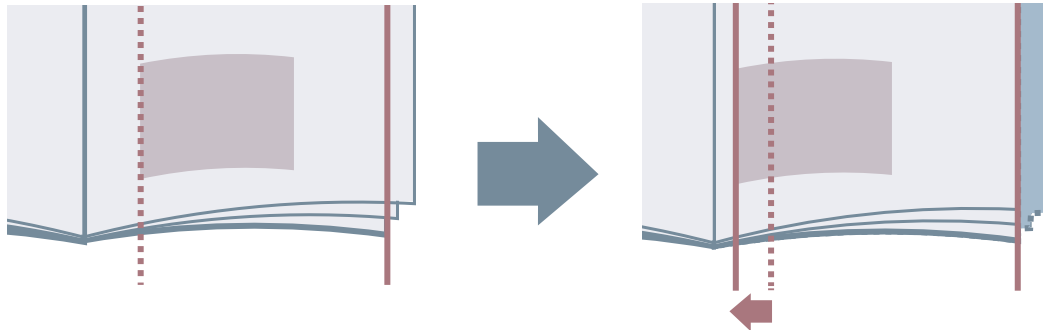
---

- ▶ [Finishing] Panel(P. 68)
- ▶ Correcting Booklet Printing Displacement(P. 53)
- ▶ Saddle Stitched Booklet Printing(P. 54)

## Correcting Booklet Printing Displacement

---

You can create and print booklets while correcting displacement between outer and inner pages that occurs during booklet printing. When trimming the edges of pages, you can adjust the margins of the gutter widths so that the position of the print data does not diverge between pages.



- 1** Select **[Finishing]** from the pop-up menu.
- 2** Select **"Booklet Printing"** from **[Print Style]**.
- 3** Click **[Detailed Settings for Booklet]**.
- 4** Select **[Use Creep (Displacement) Correction]**.
- 5** Select a correction method in **[Displacement Correction Method]**.  
If correcting manually, specify **[Correction Width]**.
- 6** Click **[OK]**.

### Related Topics

---

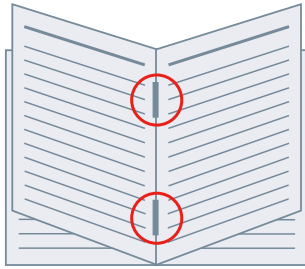
- ▶ **[Finishing] Panel(P. 68)**
- ▶ **Booklet Printing(P. 52)**



## Saddle Stitched Booklet Printing

---

When creating and printing booklets, you can output pages stapled in the center. When folding the pages in half, each set is output saddle stitched in the center.



- 1** Select [Finishing] from the pop-up menu.
- 2** Select "Booklet Printing" from [Print Style].
- 3** Select a saddle stitching method from [Saddle Stitch Settings].

### Related Topics

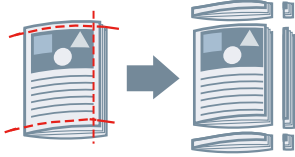
---

- ▶ [Paper Source] Panel(P. 66)
- ▶ [Finishing] Panel(P. 68)
- ▶ Booklet Printing(P. 52)
- ▶ Saddle Press Processing When Creating Saddle Stitched Booklets(P. 56)
- ▶ Trimming Pages When Creating Saddle Stitched Booklets(P. 55)

# Trimming Pages When Creating Saddle Stitched Booklets

---

When stapling in the middle to form a booklet, you can trim and align the edges of the pages.



- 1** Select [Finishing] from the pop-up menu.
- 2** Select "Booklet Printing" from [Print Style].
- 3** Select a setting that includes "Trim" from [Saddle Stitch Settings].
- 4** Select a trimming method from [Trim Settings].
- 5** Specify the trim width.

## Related Topics

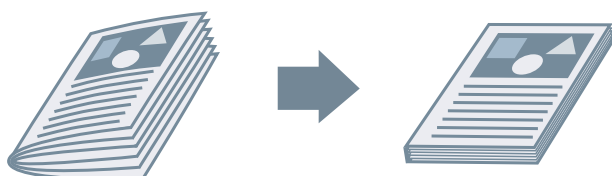
---

- ◂ [Finishing] Panel(P. 68)
- ◂ Saddle Stitched Booklet Printing(P. 54)

## Saddle Press Processing When Creating Saddle Stitched Booklets

---

When creating and printing saddle stitched booklets, you can compress the stapled sections so that they are flat.



- 1** Select [Finishing] from the pop-up menu.
- 2** Select "Booklet Printing" from [Print Style].
- 3** Select a saddle stitching method from [Saddle Stitch Settings].
- 4** Click [Detailed Settings for Booklet].
- 5** Select [Saddle Press] → specify a saddle press processing strength in [Saddle Press Adjustment].
- 6** Click [OK].

### Related Topics

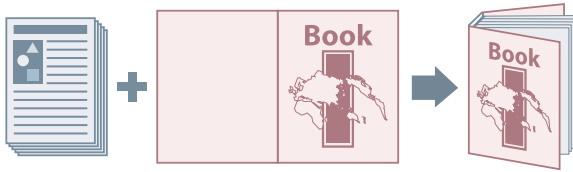
---

- ▶ [Finishing] Panel(P. 68)
- ▶ Saddle Stitched Booklet Printing(P. 54)

## Perfect Binding Booklet Printing

---

You can apply glue to the gutter side of the contents and enclose them in a cover to create a booklet.



- 1** Select [Finishing] from the pop-up menu.
- 2** Select the type of perfect binding from [Print Style].
- 3** Click [Perfect Binding Settings].
- 4** In the [Perfect Binding Settings] dialog box, set the required items.
- 5** Click [OK].

### Related Topics

---

- 🔍 [Finishing] Panel(P. 68)

# Using Various Types of Paper

<b>Using Various Types of Paper</b> .....	59
<b>Registering Custom Paper Sizes</b> .....	60
<b>Inserting Sheets</b> .....	61
<b>Inserting Sheets Between Transparencies</b> .....	62
<b>Print on the Tab of Tab Paper</b> .....	63

## Using Various Types of Paper

---

- ▶ **Registering Custom Paper Sizes(P. 60)**
- ▶ **Inserting Sheets(P. 61)**
- ▶ **Inserting Sheets Between Transparencies(P. 62)**
- ▶ **Print on the Tab of Tab Paper(P. 63)**

## Registering Custom Paper Sizes

---

You can register a desired paper size and use it for printing.

A registered custom paper size can also be used when printing from another device.

- 1** Select **[Manage Custom Sizes]** from **[Paper Size]** in the print dialog box.
- 2** Click **[+]** at the bottom of the displayed dialog box.
- 3** Configure detailed settings such as the name, dimensions, etc. of the custom paper size → click **[OK]**.

## Inserting Sheets

---

You can insert chapter pages, tab paper, etc. between specified pages.



- 1** Select [Paper Source] from the pop-up menu.
- 2** Select [Insert Sheets] → click [Insert Sheets Settings].
- 3** Select the paper type to use from [Sheets to Insert].
- 4** Set [Paper Source], [Print on] and [Insert].
- 5** Click [OK].

### Related Topics

---

- ▶ [Paper Source] Panel(P. 66)



## Inserting Sheets Between Transparencies

---

You can print while inserting sheets of paper between transparencies.

- 1** Select **[Paper Source]** from the pop-up menu.
- 2** Select **[Paper Type]** from **[Select by]** → click **[Settings]**.
- 3** In **[Paper Type]**, select **transparencies** → click **[OK]**.
- 4** Select **[Insert Cover Sheets]** → click **[Settings]**.
- 5** In **[Paper Type]** in the **[Paper Type Settings]** dialog box, select the type of paper to be inserted → click **[OK]**.

### Related Topics

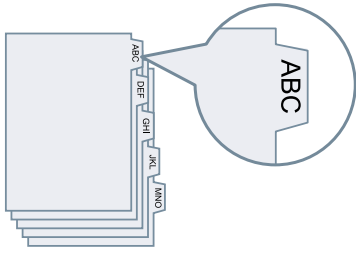
---

- ◉ **[Paper Source] Panel(P. 66)**

## Print on the Tab of Tab Paper

---

You can print on the tab part of tab paper.



- 1** Select [Paper Source] from the pop-up menu.
- 2** Select [Paper Type] from [Select by] → click [Settings].
- 3** Select tab paper in [Paper Type] → click [OK].

If it is necessary to adjust the tab width, perform the following procedure.

- 4** Click [Tab Details].
- 5** Select [Offset Printing Position] → specify [Offset Width].

When print data is created with one of the following paper types, do not select [Offset Printing Position]. The tab part of the paper is included in the paper width.

- A4 tab paper: 223 x 297 mm (8.77 x 11.69 inches)
- Letter tab paper: 228.6 x 279.4 mm (9.00 x 11.00 inches)

- 6** Click [OK].

### Related Topics

---

- ▶ [Paper Source] Panel(P. 66)

# Settings List

<b>Settings List</b> .....	65
<b>[Paper Source] Panel</b> .....	66
<b>[Finishing] Panel</b> .....	68
<b>[Quality] Panel</b> .....	73
<b>[Special Features] Panel</b> .....	78
<b>[Basic] Panel</b> .....	80
<b>[Authenticate and Print] Panel</b> .....	81
<b>[Advanced] Panel</b> .....	82
<b>Printer Utility Settings</b> .....	83

## Settings List

---

- ▶ [Paper Source] Panel(P. 66)
- ▶ [Finishing] Panel(P. 68)
- ▶ [Quality] Panel(P. 73)
- ▶ [Special Features] Panel(P. 78)
- ▶ [Basic] Panel(P. 80)
- ▶ [Authenticate and Print] Panel(P. 81)
- ▶ [Advanced] Panel(P. 82)
- ▶ Printer Utility Settings(P. 83)

## [Paper Source] Panel

---

You can set the paper type and paper source.

### [Select by]

Specifies whether to set the paper to print on from a paper source or by paper type.

### [Paper Source]

Select this to specify the paper to print on from a paper source. If you select [Auto], a paper source is automatically selected according to the specified output paper size.

### [Paper Type]

Select this to specify the paper to print on by paper type. If [Settings] is displayed, display the dialog box for selecting the paper type, and set the paper type.

### [Settings]

Specifies the paper type.

### [Insert Sheets]

Sets whether to insert sheets, chapter pages, or tab paper between specified pages.

### [Insert Sheets Settings]

Sets the type of paper to be inserted, the insertion location, etc.

 [Insert Sheets Settings] Dialog

#### [Sheets to Insert]

Sets the paper to be inserted.

#### [Paper Source]

Specifies the paper source of the paper to be inserted.

#### [Print on]

Sets whether to print on the paper to be inserted. If the paper is to be printed on, select which side to print.

#### [Insert]

Specifies the page number where the paper is to be inserted. The paper is inserted before the specified pages.

#### [Tab Paper]

Sets the type of tab paper and specifies a shift width to offset print data to the tab portion of the tab paper.

### [Print on Transparencies]

Prints on transparencies.

### [Insert Cover Sheets]

Inserts paper between transparencies. Select whether to specify the paper by paper source or paper type in [Select by]. If you select [Paper Type], click [Details] to select the paper type.

### [Print on Cover Sheets]

Prints on the paper to be inserted.

### [Front/Back Cover Settings]

Sets a front or back cover. Also specifies which side of the set paper to print on and the paper source of the paper.

### [Tab Position]/[Tab Details]

Specifies [Offset Width] and offsets the print data so that it is printed on the tab portion of the paper.

### [Print on the Other Side]

When manually performing two-sided printing, select this to print on the back side.


### [Carbon Copy Settings]

Prints one copy each from multiple specified paper sources.

This function is convenient for printing the same data to different paper, such as printing a document for submission on high quality paper and printing a copy for storage purposes on recycled paper.

This function can be used when something other than [Auto] is set in [Paper Source].

If this function is enabled, one copy is printed from each specified paper source, regardless of the number of print copies that is set.

 [Carbon Copy Settings] Dialog

### [Carbon Copy]

Select this to use the Carbon Copy function.

### [Primary Paper Source]

Displays the paper source set in [Paper Source] on the [Paper Source] panel.

### [Secondary Paper Sources]

Selects the paper source for the Carbon Copy function. If you selected multiple paper sources, one copy is printed from each paper source.

## Related Topics

---

- ▶ **Inserting Sheets(P. 61)**
- ▶ **Inserting Sheets Between Transparencies(P. 62)**
- ▶ **Print on the Tab of Tab Paper(P. 63)**

## [Finishing] Panel

---

You can set finishing options such as two-sided printing, stapling, booklet printing, etc.

### [Print Style]

Specifies printing methods such as two-sided printing, booklet printing, etc.

#### [1-sided Printing]

Prints on one side of the paper.

#### [2-sided Printing]

Prints on both sides of the paper.

#### [Booklet Printing]

Prints with the pages of a document arranged so that it can be folded in half to create a booklet.

#### [Perfect Binding]

Applies glue to the gutter side of the contents and encloses them in a cover to create a booklet.

### [Binding Location]

Specifies the binding location.

#### [Gutter]

Sets the gutter width.

When gutters are set, the printable region of the page is reduced only by the amount equivalent to the set width. In such cases, part of the data that cannot fit within the printable region may not be printed.

### [Saddle Stitch Settings]

Sets saddle stitching and trimming methods when creating booklets.

### [Trim Settings]

Sets a width when setting a finished width and/or height and trimming the edges of the paper.

#### [Fore]

Sets the trim width of the opening edge (fore) of a booklet.

#### [Top/Bottom]

Sets the trim width of the upper edge (top) and lower edge (bottom) of a booklet.

### [Booklet]

Sets details required for booklet printing such as opening direction, gutter width, etc.

 [Booklet] Dialog

#### [Book Opening]

Enables you to select whether a document opens to the right or left when creating a booklet.

### **[Use Creep (Displacement) Correction]**

Corrects the offsetting that occurs between outer and inner pages during booklet printing. Select a correction method from [Displacement Correction Method]. If you want to correct offsetting manually, specify the amount of correction in [Correction Width].

### **[Saddle Press]**

Performs saddle press processing when creating a saddle stitched booklet. You can specify the pressing force in [Saddle Press Adjustment].

## **[Perfect Binding Settings]**

Applies glue to the gutter side of the contents and encloses them in a cover to create a booklet.

 [Perfect Binding Settings] Dialog

### **[Book Opening]**

Enables you to select whether a document opens to the right or left when creating a booklet.

### **[Perfect Bound Cover Settings]**

Sets the size of a cover and the paper source to be used for the cover.

### **[Content Page Size]**

Sets the paper size to be used for the contents.

### **[Specify Finishing by]**

Selects a method for specifying the finished size of a booklet.

### **[Finishing Size]**

Sets the finished size when creating a booklet.

## **[Staple]**

Staples the pages together.

### **[Position]**

Specifies stapling locations.

The available staple locations vary depending on the output paper size, paper feed direction, and paper source method.

## **[Misc. Finishing Modes]**

Offsets stacks output pages, punches holes in printed pages, etc.

 [Misc. Finishing Modes] Dialog

### **[Offset]**

Offsets each stack of output pages.

### **[Number of Copies for Offset]**

Offsets each specified number of output pages.

### **[Rotate]**

Rotates and outputs each print job at 90 degrees.

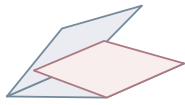
### **[Hole Punch]**

Outputs printed pages with holes for binding. This function can only be used when enabled at the device.

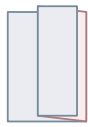


**[Fold Type]**

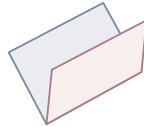
Enable this when outputting pages folded into one of a variety of forms, and specify the type of fold.



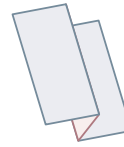
C-fold



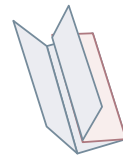
Z-fold



Saddle Fold



Accordion Z-fold



Double Parallel Fold

**[Fold Details]**

When selecting [C-fold], [Half Fold], [Saddle Fold], [Accordion Z-fold], or [Double Parallel Fold] for the fold type, specify the fold pattern.

**NOTE**

- If Z-fold and stapling are specified together, the fold direction of the Z-fold changes depending on the stapling location.

**[Paper Output]**

Selects an output destination for printed paper.

**[Finishing Details]**

Specifies whether pages are output face up or face down, rotates the printing orientation, etc. You can also set watermark printing, copy set numbering, etc.

 [Finishing Details] Dialog

**[Rotate Print Data 180 Degrees]**

Rotates the orientation of the paper when printing paper that must be supplied in a specific direction, such as tab paper, envelopes, etc.

**[Calibrate]**

Sets color adjustment. Set this if documents are not printed in the specified colors etc.

**[Job Note]**

Displays a comment regarding the print data. You can check the comment information that has been input in each set of data from the control panel of the device or the Remote UI.

**[Glossy Plain Paper Processing]**

When printing on normal paper, sets to output it with a glossy appearance.

**[Face Up/Face Down]**

Specifies whether the printed side is output face up or face down.

**[Transparency Printing]**

Prints using the method appropriate to the type of transparency that has been set.

**[Postcard Printing]**

Sets the print method when printing postcards.

**[Use Secure Watermark Function of Device]/[Use Secure Printing Function of Device]**

Embeds restriction and tracking information into the print data as a dot pattern. This is useful when printing confidential documents etc.

**[Copy Set Numbering]**

Prints serial numbers when printing multiple sets. This is a useful function when printing confidential documents etc.

**[Advanced Settings]**

Sets special print adjustment, the position to start printing, etc.

**[Image Special Process]**

Set this when printing dark letters or when the central parts of lines are not printed.

[Level 2] performs special processing of images at a higher level than [Level 1].

**[Fixing Mode]**

Improves the fixing state of toner. Try the settings in order, starting with [Mode 1].

**[Blurry Image Correction]/[Special Print Adjustment]/[Special Print Adjustment A]**

Thins out the dots when printing. Try the settings in order, starting with [Mode 1].

**[Special Print Adjustment B]**

Prints with high toner fixing. Try the settings in order, starting with [Mode 1].

**[Quiet Mode]/[Special Print Adjustment C]**

Slows down the printing speed to improve printing conditions.

**[Special Print Mode (Plain Paper)]/[Special Print Adjustment V]**

Corrects paper curling when using plain paper.

**[Special Smoothing Mode]**

Corrects the contours of characters and lines, and smoothes gradations.

[Printer Default]: Follows the device setting.

[Mode 1]: Smoothes the contours of dark letters and lines.

[Mode 2]: Smoothes the contours of dark letters and halftones within lines.

[Mode 3]: Smoothes dark letters and lines over halftone backgrounds.

[Mode 4]: Smoothes the contours of various letters and lines.

[Mode 5]: Corrects non-uniformity in photographic images and halftone objects.

[Mode 6]: Smoothes print data as a whole.

**[Small-size Curl Adjustment]**

Adjusts the fixing temperature so that paper of smaller sizes does not curl due to heat.

**[Curl Adjustment]**

Corrects curling of paper due to the pressure applied during toner fixing.

**[Wrinkle Adjustment]**

Improves printing so that the paper does not wrinkle. Try [Mode 1] first. Depending on the printer model, [Mode 1] corrects wrinkles when printing with envelopes, and [Mode 2] when printing with paper whose edges are moist.

**[Print Mixed Color/B&W Documents at High Speed]**

Automatically switches between color and black-and-white when printing data containing a mixture of color and black-and-white pages.

**[Increase Print Speed for Forms]**

Improves the print result on long narrow pages such as report forms etc.

**[Prevent Postcard Fogging]**

If the printed image is entirely or partially fogged when printing to postcards, select [Mode 1]. If this does not solve the problem, you can select [Mode 2], but this may affect the printed image itself.

**[Print Last Page in 1-sided in 2-sided Printing]**

Prints faster than normal two-sided printing if the last page during two-sided printing is one-sided.

However, when performing two-sided printing on hole-punched paper, the orientation of the last page may be different to that of the other pages. If this is the case, cancel this setting.

**[Print on Back with Special Mode in 2-sided Printing]**

Processes the paper so that the other side of the paper does not wrinkle and the print result does not become pale in places when performing two-sided printing.

**[Special Fine Line Processing]**

Corrects thinly lined sections to thicken them during printing.

**[Barcode Adjustment Mode]**

Adjusts the line thickness when printing barcodes so that they are not blurred or broken.

**[Offset the Position to Start Printing]**

Prints with the start position for printing offset in the up and down or left and right directions. This is useful when the widths of the up, down, left and right margins are printed out of alignment or when using the booklet printing function.

## Related Topics

---

- ▶ **Booklet Printing(P. 52)**
- ▶ **Correcting Booklet Printing Displacement(P. 53)**
- ▶ **Saddle Stitched Booklet Printing(P. 54)**
- ▶ **Trimming Pages When Creating Saddle Stitched Booklets(P. 55)**
- ▶ **Saddle Press Processing When Creating Saddle Stitched Booklets(P. 56)**
- ▶ **Perfect Binding Booklet Printing(P. 57)**

## [Quality] Panel

---

You can set the print resolution, color mode, etc.

### [Quality]

Selects the print resolution.

### [Quality Settings]

Sets print quality details such as gradation, toner amount, etc.

 [Quality Settings] Dialog

### [Graphics Mode]

Selects a processing method for print data.

#### [Vector Mode]

Processes print data with the LIPS control command and sends it to the device.

#### [Raster Mode]

Converts print data to image data (.bmp) and sends it to the device.

### [Gradation]

Specifies the gradation method.

[High 2] uses a finer gradation than [High 1] to express smoothness.

### [Halftones]/[Color Halftones]/[B & W Halftones]

Specifies dither patterns for representing halftones (intermediate areas between dark and light areas).

### [Prioritize for Processing When in Raster Mode]

Sets the items to prioritize when the print data conversion method is set to the raster mode. You can select images, graphics, or text.

The raster mode is set as the conversion method when [Raster Mode] is set in the [Quality Settings] dialog > [Graphics Mode] on the [Quality] panel.

### [Toner Save]

Saves toner by printing the print data with less toner.

### [Ink Saving]

Thins out the print data to save ink.

### [Line Refinement]

Thickens and corrects thin lines. set this when you want to clearly print small characters etc.

### [Toner Density Adjustment]/[Toner Density]

Adjusts the toner density. If [Settings] is displayed, adjust the toner density for each color.

### [Advanced Smoothing]

Corrects the contours of characters and lines, and smoothes gradations.

[Smooth 2] performs stronger smoothing processing than [Smooth 1].

### [Toner Volume Correction]

Adjusts the amount of toner to match the content of the print data.

**[Line Control]**

Improves reproduction of text and lines.

**[Sharpness]**

Strengthens and weakens the contours of text and images.

**[Sharpness (Photo)]**

Strengthens and blurs the contours of images.

**[Use Image Refinement]**

Corrects the smoothness of the contours of text and diagrams.

**[Gradation Smoothing]**

Smoothly prints the amount of color change of gradations.

[Smooth 2] performs stronger smoothing processing than [Smooth 1].

**[Image Compression]**

Adjusts the print data compression ratio when sending print data to the printer, and prints with priority given to either image quality or print speed.

**[Image Compression Optimization]**

Sets an image compression method. Select whether to compress by optimizing each section within the image or whether to compress uniformly.

**[Density Fine Adjustment]**

When correcting blurriness, adjusts the density of small characters and fine lines.

**[Grayscale Conversion]**

Selects a method for converting color data to grayscale.

**[Width Adjustment]**

Adjusts the thickness of specific objects such as text and lines.

**[Trapping]**

Prevents overlapping at the border line between text or graphics and the background color as well as unprinted sections along the outlines of text. If [Details] is displayed, adjust the trapping content.

**[Trapping Width]**

Specifies the width of trapping.

**[Trapping Density]**

Specifies the density of trapping.

**[Adjust Toner Volume Used for Color Printing]**

Suppresses an over-supply of toner by adjusting the toner amount during color printing.

**[Sharpen Text]**

Prints white text and lines on a black background clearly.

**[Increase Line Density]**

Makes pale-colored thin lines and text easier to see.

Set this when gray lines are interrupted.

**[Advanced Settings]**

Sets print quality options.

**[Gray Compensation]**

Reliably prints black and gray data as black and gray.

**[Prioritize Printing of Colored Lines and Text]**

Processes color lines and text so that they do not blur.

**[Composite Overprint]**

Recreates overprint attributes specified by the application as they are.

**[Spot Color Matching]**

Recreates special colors specified by the application.

**[Dot Gain Adjustment]**

Adjusts the surface area covered by dots and adjusts the density of fill.

As the numerical value increases, the density of fill increases.

**[Color Mode]**

Switches between printing in color or in black-and-white.

**[Output at Color Printing Speed]**

To increase the printing speed, prints mixed color and black-and-white page data at color print speed.

**[Number of Colors Settings]**

Switches between full color printing and two color printing. If you select [Two Colors], select [Color to Use with Black].

**[Color Settings]**

Adjusts color, brightness, contrast, or color matching.

 [Color Settings] Dialog

**[Color Adjustment]**

Sets brightness and contrast.

**[Preview]**

Displays the image after color adjustment as a sample image.

**[Original]**

Displays the image before color adjustment as a sample image.

**[Adjusted Position]**

Displays what stage of adjustment color highlighting is at, with the color tone of the image prior to adjustment as "X = 0, Y = 0".

The strength of colors is adjusted using the icons indicating each color or by dragging the image over the coordinates.

**[Brightness]**

Adjust the brightness by moving the slider.

**[Contrast]**

Adjust the contrast by moving the slider.

**[Matching]**

Sets a matching method for color adjustment.

**[Matching Mode]**

Select whether to embed and use the monitor profile or use the driver profile.

Alternatively, you can select whether to implement color matching at the device end or the driver end.

**[Matching Method]**

Specifies what elements to prioritize when matching, such as matching the colors on the monitor, photographs, etc.

**[Monitor Profile]**

Sets an input profile suitable for the monitor or scanner you are using.

**[Gamma Adjustment]**

Prints with gamma correction.

**[Restore]**

Restores the settings at the time the dialog box was opened.

**[Combine Color Separations]**

Integrates four-color-separated CMYK data to print a single document.

**[Profile Settings]**

Performs detailed profile settings.

 [Profile Settings] Dialog

**[Pure Black Text]**

Prints black text with black toner only.

**[Black Overprint]**

With data in which black text overlaps a color background, prints without leaving the background behind the black text white. By not leaving the background of the black text white, you can print without the text being outlined in white.

**[RGB]**

Set this when inputting RGB.

**[Matching Mode]**

Sets RGB input color matching. If [Device Link Profile] has been selected, configure the settings in [Input (Light + Color Space)].

**[Source Profile]**

Select an RGB profile suitable for the monitor you are using.

**[Matching Method]**

Sets a printing method when converting an RGB input profile to CMYK.

**[Pure Black Process]**

Prints gray data created in RGB with black toner only.

**[Input (Light + Color Space)]**

Sets the color temperature of ambient light and the color space of the monitor applied by [Device Link Profile] in [Matching Mode].

**[CMYK]**

Set this when inputting CMYK.

**[Matching Mode]**

Sets the CMYK input color matching mode. If [Device Link Profile] has been selected, configure the appropriate settings in [Input (Light + Color Space)].

**[Simulation Profile]**

Sets a simulation target when printing CMYK data.

**[Pure Black Process]**

Prints gray data with black toner only.

**[Input (Light + Color Space)]**

Sets the color temperature of ambient light and the color space of the monitor applied by [Device Link Profile] in [Matching Mode].

**[Grayscale]**

Displays documents created in color as monochromatic data formed by multiple gradations.

**[Use Grayscale Profile]**

Converts color images to grayscale using a grayscale profile.

**[Output Profile]**

Sets a profile for defining the color attributes of the device you are using.

**[Prioritize Printing of Lines and Text]**

Prints with the appropriate toner density for printing fine lines and text.

**[Brightness]**

Adjust the brightness by moving the slider.



## [Special Features] Panel

---

You can configure settings and department management relating to print data processing.

### [Job Processing]

Sets the method for outputting print data. You can save the data to the device, move a print job in the print queue ahead of other jobs and print it, etc.

#### [Print]

Performs normal printing.

#### [Hold]

Saves print data in a hold queue (temporary storage area) in the device. You can change the print order or settings of the stored data from the control panel of the device or the Remote UI.

#### [Secured Print]

Sets a PIN for print data and saves it in the device. This function is useful when printing confidential documents etc. If the encrypted secure print function is enabled, you can encrypt and print data and increase the effectiveness of your security.

The saved data can be printed by entering the PIN at the control panel of the device.

#### [Store]

Saves the print data to a box in the device. You can change the settings of or combine the stored data from the control panel of the device or the Remote UI.

#### [Interrupt Print]

Suspends the print job currently being processed by the device and prints the specified job.

#### [Promote Print]

Prints with priority over other print jobs that are waiting to be printed by the device.

#### [Scheduled Print]

Starts printing at the specified time.

### [Use Department ID Management]

Manages printing status by department. If [Settings] is displayed, set the department ID, PIN, etc.

### [User Management]

Manages printing by means of the department ID management function or the user authentication function.

### [Copy Current Setting Values]

Copies the current settings of each panel to the clipboard.

### [Page Options]

Set options such as overlay printing etc.

 [Page Options] Dialog

### **[Processing Method]**

Sets overlay printing, clear coating on entire page, etc. You can also create a new form file.

#### **[Overlay Printing]**

Overlaps and prints print data on a form created beforehand.

#### **[Clear Coating on Entire Page]**

Decorates the document so that desired text or a desired pattern seems to float above the document.

#### **[Clear Coating on Form Composition]**

Creates a form for the region you want to clear coat so that desired text or a desired pattern seems to float above the document.

#### **[Create Form File]**

Creates a new form file.

### **[File List]**

Displays a list of form files stored in the device. When performing overlay printing and clear coating on form composition, select a form file to be used from the list.

If you cannot acquire information from the device, the list is not displayed.

### **[Application]**

When [Overlay Printing] is selected, selects which side to print on for two-sided printing. When [Clear Coating on Form Composition] is selected, specifies the area to which clear coating is applied.

### **[File Name]**

Specifies a name for the newly created form file.

### **[Version]**

Displays information about the driver version.

## **Related Topics**

---

- ▶ **Holding a Print Job(P. 41)**
- ▶ **Attaching a PIN to Print Data(P. 42)**
- ▶ **Setting the Authentication Function(P. 43)**
- ▶ **Saving Print Data in a Box in the Device(P. 45)**
- ▶ **Suspend Currently Printing Jobs to Prioritize a Print Job(P. 46)**
- ▶ **Prioritizing a Print Job Over Other Print Jobs(P. 47)**

## **[Basic] Panel**

---

You can set the binding location when performing two-sided printing, toner saving, etc.

### **[Print Style]**

Selects whether to print on one side or both sides.

### **[Binding Location]**

Selects the binding location.

### **[Toner Save]**

Saves toner by reducing its density when printing.

### **[Version]**

Displays information about the driver version.

## [Authenticate and Print] Panel

---

You can manage the print status by department, and encrypt and print the print data, etc.

### [Use Secured Print]

Sets a PIN in the print data and saves it to the device.

The saved data can be printed by entering the PIN at the control panel of the device.

### [Use Department ID Management]

Manages the print status of each department.

You can print by entering the department ID and PIN registered in the device.

## Related Topics

---

- ▶ [Attaching a PIN to Print Data\(P. 42\)](#)
- ▶ [Setting the Authentication Function\(P. 43\)](#)

## **[Advanced] Panel**

---

When printing text or images, you can improve the print results when contours are hazy or blurred.

### **[Smooth Outline of Characters and Figures]**

Corrects the smoothness of the contours of text and diagrams by means of a smoothing process.

## Printer Utility Settings

---

You can use the Office Printer Utility or CUPS PS Printer Utility to set the authentication function and initial settings to use when printing, etc. You can also check the information of the device you are using.

### Common Items

This section describes the common items displayed in each dialog box.

#### [Printer Name]

Displays the name of the target printer.

If the utility was started from [Printers & Scanners], the printer name of the selected device is displayed.

If the utility was started from Finder, a list of the printer names of the devices registered in the operating system is displayed.

#### [Kind]

Displays the type of driver that is set.

If the utility was started from [Printers & Scanners], the driver name of the selected device is displayed.

If the utility was started from Finder, a list of the driver names of the devices registered in the operating system is displayed.

#### [Printer Information]

Displays a list of information for the options installed in the device.

 [Printer Information] Dialog

#### [Configuration]

Displays the settings of the options installed in the device.

When duplex communication is used and device information can be retrieved, the option settings are displayed.

When simplex communication is used or information cannot be retrieved from the device, the option settings manually specified in advanced are displayed.

#### [Paper Source]

When duplex communication is used and device information can be retrieved, information regarding the paper size and paper type set in the paper sources of the device is displayed.

#### [Remote UI]

Displays the Remote UI page of the selected device.

#### [Save Settings]

Saves the changed settings.

## [Department ID Management] Panel

Specifies settings regarding printing using the Department ID Management function.

### [Use Department ID Management]

Set this to perform Department ID Management.

Enter the numbers set on the device in [Department ID] and [PIN]. If you select [Verify], you can check whether the values you entered match the device settings.

### [Confirm Department ID/PIN When Printing]

Displays a dialog box for checking the authentication information each time printing is performed.

### [Do Not Use Department ID Management When B&W Printing]

If [Allow Black & White Printer Jobs] has been enabled on the device side, black-and-white printing is performed regardless of Department ID Management.

## [Authentication Function] Panel

Specifies settings regarding printing using the user management function.

### [User Management]

Set this when using [Department ID Management] or [User Authentication].

Enter the values set on the device in [Department ID] and [PIN] or [User Name] and [Password]. If you select [Verify], you can check whether the values you entered match the device settings.

### [Confirm Department ID/PIN When Printing]

Displays a dialog box for checking the authentication information each time printing is performed.

### [Do Not Use Department ID Management When B&W Printing]

If [Allow Black & White Printer Jobs] has been enabled on the device side, black-and-white printing is performed regardless of Department ID Management.

## [User Information] Panel

Sets the user name to use for the print data and secure printing.

### [Name to Set for User Name]

Sets the name to use as the user name. If you selected [Enter Name], enter an arbitrary name. The user name you set is displayed on the control panel of the device and used for printing.

### [PIN for Secured Print]

Enter the PIN to use for secure printing.

## [Store Destination] Panel

Sets the device box for saving the print data.

### [Box]

Specify the box number for saving the print data. You can also change the box number when saving the data.

## Related Topics

---

- ▶ [Enabling Automatic Setting of the Options of the Device\(P. 28\)](#)
- ▶ [Manually Setting the Options of the Device\(P. 31\)](#)
- ▶ [Attaching a PIN to Print Data\(P. 42\)](#)
- ▶ [Setting the Authentication Function\(P. 43\)](#)
- ▶ [Saving Print Data in a Box in the Device\(P. 45\)](#)
- ▶ [Setting User Information from a Printer Utility\(P. 49\)](#)



# Troubleshooting

<b>Troubleshooting</b> .....	87
<b>Cannot Register a Device Connected by Bonjour</b> .....	88
<b>Printing is Slow</b> .....	89

# Troubleshooting

---

This explains solutions to common problems.

Limitations and precautions are also included in the Readme file.

- ▶ **Cannot Register a Device Connected by Bonjour(P. 88)**
- ▶ **Printing is Slow(P. 89)**

# Cannot Register a Device Connected by Bonjour

---

When registering a device connected by Bonjour in the operating system, the corresponding device may not be displayed in the [Add] dialog box.

If this happens, it could be due to a number of causes. Change settings as necessary by referring to each "Remedy."

## Cause 1.

**The settings of the device are incorrect**

### Remedy

Confirm that the Bonjour settings in the control panel of the device are enabled. For details, refer to the manual of the device.

## Cause 2.

**The network settings of the operating system are incorrect**

### Remedy

Check whether the necessary settings have been configured in the network settings of the operating system. If they have not been set, change the settings according to the following procedure.

- (1) Display the [System Preferences] dialog box of the operating system → click [Network].
- (2) Enable the network settings you are using in the [Network] panel.
- (3) Click the [Finder] icon → click [Finder] > [Preferences] in the menu bar.
- (4) Click the [General] tab in the [Finder Preferences] dialog box → enable [Connected servers].

## Cause 3.

**The driver has not been installed correctly**

### Remedy

Reinstall the driver and register the device again.

## Related Topics

---

- ▶ Installing the Driver(P. 16)

## Printing is Slow

---

If transmission takes a long time when sending data to the device, it could be caused by the following. Follow the instructions described in "Remedy."

### Cause

**The amount of data being sent to the device is large, such as a document containing color photographs or large images**

#### Remedy 1.

- If the resolution of the image is higher than needed, set the resolution to an appropriate value in the [Quality] panel > [Quality].

#### Remedy 2.

- When using the UFR II/UFRII LT/LIPSLX Printer Driver, transmission may be improved by converting the print data to image data (.bmp) and sending it according to the following procedure.

(1) Click the [Quality] panel > [Quality Settings].

(2) Select [Raster Mode] from [Graphics Mode] in the [Quality Settings] dialog.

### Related Topics

---

- ▶ [\[Quality\] Panel\(P. 73\)](#)

This Font Software is licensed under the SIL Open Font License, Version 1.1.

This license is copied below, and is also available with a FAQ at: <http://scripts.sil.org/OFL>

-----  
SIL OPEN FONT LICENSE Version 1.1 - 26 February 2007  
-----

#### PREAMBLE

The goals of the Open Font License (OFL) are to stimulate worldwide development of collaborative font projects, to support the font creation efforts of academic and linguistic communities, and to provide a free and open framework in which fonts may be shared and improved in partnership with others.

The OFL allows the licensed fonts to be used, studied, modified and redistributed freely as long as they are not sold by themselves. The fonts, including any derivative works, can be bundled, embedded, redistributed and/or sold with any software provided that any reserved names are not used by derivative works. The fonts and derivatives, however, cannot be released under any other type of license. The requirement for fonts to remain under this license does not apply to any document created using the fonts or their derivatives.

#### DEFINITIONS

"Font Software" refers to the set of files released by the Copyright Holder(s) under this license and clearly marked as such. This may include source files, build scripts and documentation.

"Reserved Font Name" refers to any names specified as such after the copyright statement(s).

"Original Version" refers to the collection of Font Software components as distributed by the Copyright Holder(s).

"Modified Version" refers to any derivative made by adding to, deleting, or substituting -- in part or in whole -- any of the components of the Original Version, by changing formats or by porting the Font Software to a new environment.

"Author" refers to any designer, engineer, programmer, technical writer or other person who contributed to the Font Software.

#### PERMISSION & CONDITIONS

Permission is hereby granted, free of charge, to any person obtaining a copy of the Font Software, to use, study, copy, merge, embed, modify, redistribute, and sell modified and unmodified copies of the Font Software, subject to the following conditions:

- 1) Neither the Font Software nor any of its individual components, in Original or Modified Versions, may be sold by itself.
- 2) Original or Modified Versions of the Font Software may be bundled, redistributed and/or sold with any software, provided that each copy contains the above copyright notice and this license. These can be included either as stand-alone text files, human-readable headers or in the appropriate machine-readable metadata fields within text or binary files as long as those fields can be easily viewed by the user.
- 3) No Modified Version of the Font Software may use the Reserved Font Name(s) unless explicit written permission is granted by the corresponding Copyright Holder. This restriction only applies to the primary font name as presented to the users.
- 4) The name(s) of the Copyright Holder(s) or the Author(s) of the Font Software shall not be used to promote, endorse or advertise any Modified Version, except to acknowledge the contribution(s) of the Copyright Holder(s) and the Author(s) or with their explicit written permission.
- 5) The Font Software, modified or unmodified, in part or in whole, must be distributed entirely under this license, and must not be distributed under any other license. The requirement for fonts to remain under this license does not apply to any document created using the Font Software.

#### TERMINATION

This license becomes null and void if any of the above conditions are not met.

#### DISCLAIMER

THE FONT SOFTWARE IS PROVIDED "AS IS", WITHOUT WARRANTY OF ANY KIND, EXPRESS OR IMPLIED, INCLUDING BUT NOT LIMITED TO ANY WARRANTIES OF MERCHANTABILITY, FITNESS FOR A PARTICULAR PURPOSE AND NONINFRINGEMENT OF COPYRIGHT, PATENT, TRADEMARK, OR OTHER RIGHT. IN NO EVENT SHALL THE COPYRIGHT HOLDER BE LIABLE FOR ANY CLAIM, DAMAGES OR OTHER LIABILITY, INCLUDING ANY GENERAL, SPECIAL, INDIRECT, INCIDENTAL, OR CONSEQUENTIAL DAMAGES, WHETHER IN AN ACTION OF CONTRACT, TORT OR OTHERWISE, ARISING FROM, OUT OF THE USE OR INABILITY TO USE THE FONT SOFTWARE OR FROM OTHER DEALINGS IN THE FONT SOFTWARE.