



Online Manual

Free Layout plus Guide

Contents

Symbols Used in This Document.	4
Touch-enabled Device Users (Windows).	5
Trademarks and Licenses.	6
Free Layout plus Guide.	21
General Notes (Free Layout plus).	23
The Features of Free Layout plus.	25
Starting Free Layout plus and Inputting Data.	27
Starting from a Regular Application.	28
Starting from an Application Supporting Plug-in.	30
Starting from PosterArtist.	35
Starting from the Start Menu.	36
Free Layout plus Screen Explanations.	37
Free Layout plus Home Screen.	38
Fixed Layout Mode.	42
Free Layout Mode.	50
Tiling Mode.	59
Folded Duplex Mode.	67
Favorites.	75
Options Dialog.	79
Canon Free Layout plus Ribbon (Office Plug-in).	80
Various Free Layout plus Features.	82
Inputting Multiple-file Documents into Free Layout plus.	83
Inputting Documents Created Using Multiple Applications into Free Layout plus.	85
Correctly Laying Out and Printing Objects.	87
Laying Out and Printing Objects as You Like.	89
Selecting an Object.	92
Changing the Object Size.	93
Moving an Object.	94
Rotating an Object.	95
Laying out Objects Automatically.	96
Aligning Objects.	97
Changing the Object Overlapping Order.	100
Pasting a Copied or Cut Object.	102

Dividing and Printing Objects. 103

Printing as Folded Duplex. 106

Printing Curtains/Banners. 110

Symbols Used in This Document

Warning

Instructions that, if ignored, could result in death, serious personal injury, or property damage caused by incorrect operation of the equipment. These must be observed for safe operation.

Caution

Instructions that, if ignored, could result in personal injury or property damage caused by incorrect operation of the equipment. These must be observed for safe operation.

Important

Instructions including important information that must be observed to avoid damage and injury or improper use of the product. Be sure to read these instructions.

Note

Instructions including notes for operation and additional explanations.

Basics

Instructions explaining basic operations of your product.

Note

- Icons may vary depending on your product.

Touch-enabled Device Users (Windows)

For touch actions, you need to replace "right-click" in this document with the action set on the operating system. For example, if the action is set to "press and hold" on your operating system, replace "right-click" with "press and hold."

Trademarks and Licenses

- Microsoft is a registered trademark of Microsoft Corporation.
- Windows is a trademark or registered trademark of Microsoft Corporation in the U.S. and/or other countries.
- Windows Vista is a trademark or registered trademark of Microsoft Corporation in the U.S. and/or other countries.
- Internet Explorer is a trademark or registered trademark of Microsoft Corporation in the U.S. and/or other countries.
- Mac, Mac OS, macOS, OS X, AirPort, App Store, AirPrint, the AirPrint logo, Safari, Bonjour, iPad, iPhone and iPod touch are trademarks of Apple Inc., registered in the U.S. and other countries.
- IOS is a trademark or registered trademark of Cisco in the U.S. and other countries and is used under license.
- Google Cloud Print, Google Chrome, Chrome OS, Chromebook, Android, Google Drive, Google Apps and Google Analytics are either registered trademarks or trademarks of Google Inc. Google Play and Google Play Logo are trademarks of Google LLC.
- Adobe, Acrobat, Flash, Photoshop, Photoshop Elements, Lightroom, Adobe RGB and Adobe RGB (1998) are either registered trademarks or trademarks of Adobe Systems Incorporated in the United States and/or other countries.
- Bluetooth is a trademark of Bluetooth SIG, Inc., U.S.A. and licensed to Canon Inc.
- Autodesk and AutoCAD are registered trademarks or trademarks of Autodesk, Inc., and/or its subsidiaries and/or affiliates in the USA and/or other countries.
- USB Type-C™ is a trademark of USB Implementers Forum.

»» Note

- The formal name of Windows Vista is Microsoft Windows Vista operating system.

Copyright (c) 2003-2015 Apple Inc. All rights reserved.

Redistribution and use in source and binary forms, with or without modification, are permitted provided that the following conditions are met:

1. Redistributions of source code must retain the above copyright notice, this list of conditions and the following disclaimer.
2. Redistributions in binary form must reproduce the above copyright notice, this list of conditions and the following disclaimer in the documentation and/or other materials provided with the distribution.
3. Neither the name of Apple Inc. ("Apple") nor the names of its contributors may be used to endorse or promote products derived from this software without specific prior written permission.

THIS SOFTWARE IS PROVIDED BY APPLE AND ITS CONTRIBUTORS "AS IS" AND ANY EXPRESS OR IMPLIED WARRANTIES, INCLUDING, BUT NOT LIMITED TO, THE IMPLIED WARRANTIES OF MERCHANTABILITY AND FITNESS FOR A PARTICULAR PURPOSE ARE DISCLAIMED. IN NO EVENT SHALL APPLE OR ITS CONTRIBUTORS BE LIABLE FOR ANY DIRECT, INDIRECT, INCIDENTAL, SPECIAL, EXEMPLARY, OR CONSEQUENTIAL DAMAGES (INCLUDING, BUT NOT LIMITED TO, PROCUREMENT OF SUBSTITUTE GOODS OR SERVICES; LOSS OF USE, DATA, OR PROFITS; OR BUSINESS INTERRUPTION) HOWEVER CAUSED AND ON ANY THEORY OF LIABILITY, WHETHER IN CONTRACT, STRICT LIABILITY, OR TORT (INCLUDING NEGLIGENCE OR OTHERWISE) ARISING IN ANY WAY OUT OF THE USE OF THIS SOFTWARE, EVEN IF ADVISED OF THE POSSIBILITY OF SUCH DAMAGE.

TERMS AND CONDITIONS FOR USE, REPRODUCTION, AND DISTRIBUTION

1. Definitions.

"License" shall mean the terms and conditions for use, reproduction, and distribution as defined by Sections 1 through 9 of this document.

"Licensor" shall mean the copyright owner or entity authorized by the copyright owner that is granting the License.

"Legal Entity" shall mean the union of the acting entity and all other entities that control, are controlled by, or are under common control with that entity. For the purposes of this definition, "control" means (i) the power, direct or indirect, to cause the direction or management of such entity, whether by contract or otherwise, or (ii) ownership of fifty percent (50%) or more of the outstanding shares, or (iii) beneficial ownership of such entity.

"You" (or "Your") shall mean an individual or Legal Entity exercising permissions granted by this License.

"Source" form shall mean the preferred form for making modifications, including but not limited to software source code, documentation source, and configuration files.

"Object" form shall mean any form resulting from mechanical transformation or translation of a Source form, including but not limited to compiled object code, generated documentation, and conversions to other media types.

"Work" shall mean the work of authorship, whether in Source or Object form, made available under the License, as indicated by a copyright notice that is included in or attached to the work (an example is provided in the Appendix below).

"Derivative Works" shall mean any work, whether in Source or Object form, that is based on (or derived from) the Work and for which the editorial revisions, annotations, elaborations, or other modifications represent, as a whole, an original work of authorship. For the purposes of this License, Derivative Works shall not include works that remain separable from, or merely link (or bind by name) to the interfaces of, the Work and Derivative Works thereof.

"Contribution" shall mean any work of authorship, including the original version of the Work and any modifications or additions to that Work or Derivative Works thereof, that is intentionally submitted to Licensor for inclusion in the Work by the copyright owner or by an individual or Legal Entity authorized to submit on behalf of the copyright owner. For the purposes of this definition, "submitted" means any form of electronic, verbal, or written communication sent to the Licensor or its representatives, including but not limited to communication on electronic mailing lists, source code control systems, and issue tracking systems that are managed by, or on behalf of, the Licensor for the purpose of discussing and improving the Work, but excluding communication that is conspicuously marked or otherwise designated in writing by the copyright owner as "Not a Contribution."

"Contributor" shall mean Licensor and any individual or Legal Entity on behalf of whom a Contribution has been received by Licensor and subsequently incorporated within the Work.

2. Grant of Copyright License. Subject to the terms and conditions of this License, each Contributor hereby grants to You a perpetual, worldwide, non-exclusive, no-charge, royalty-free, irrevocable copyright license to reproduce, prepare Derivative Works of, publicly display, publicly perform, sublicense, and distribute the Work and such Derivative Works in Source or Object form.
3. Grant of Patent License. Subject to the terms and conditions of this License, each Contributor hereby grants to You a perpetual, worldwide, non-exclusive, no-charge, royalty-free, irrevocable (except as stated in this section) patent license to make, have made, use, offer to sell, sell, import, and otherwise transfer the Work, where such license applies only to those patent claims licensable by such Contributor that are necessarily infringed by their Contribution(s) alone or by combination of their Contribution(s) with the Work to which such Contribution(s) was submitted. If You institute patent litigation against any entity (including a cross-claim or counterclaim in a lawsuit) alleging that the Work or a Contribution incorporated within the Work constitutes direct or contributory patent infringement, then any patent licenses granted to You under this License for that Work shall terminate as of the date such litigation is filed.
4. Redistribution. You may reproduce and distribute copies of the Work or Derivative Works thereof in any medium, with or without modifications, and in Source or Object form, provided that You meet the following conditions:
 1. You must give any other recipients of the Work or Derivative Works a copy of this License; and
 2. You must cause any modified files to carry prominent notices stating that You changed the files; and
 3. You must retain, in the Source form of any Derivative Works that You distribute, all copyright, patent, trademark, and attribution notices from the Source form of the Work, excluding those notices that do not pertain to any part of the Derivative Works; and
 4. If the Work includes a "NOTICE" text file as part of its distribution, then any Derivative Works that You distribute must include a readable copy of the attribution notices contained within such NOTICE file, excluding those notices that do not pertain to any part of the Derivative Works, in at least one of the following places: within a NOTICE text file distributed as part of the Derivative Works; within the Source form or documentation, if provided along with the Derivative Works; or, within a display generated by the Derivative Works, if and wherever such third-party notices normally appear. The contents of the NOTICE file are for informational purposes only and do not modify the License. You may add Your own attribution notices within Derivative Works that You distribute, alongside or as an addendum to the NOTICE text from the Work, provided that such additional attribution notices cannot be construed as modifying the License.

You may add Your own copyright statement to Your modifications and may provide additional or different license terms and conditions for use, reproduction, or distribution of Your modifications, or for any such Derivative Works as a whole, provided Your use, reproduction, and distribution of the Work otherwise complies with the conditions stated in this License.
5. Submission of Contributions. Unless You explicitly state otherwise, any Contribution intentionally submitted for inclusion in the Work by You to the Licensor shall be under the terms and conditions of this License, without any additional terms or conditions. Notwithstanding the above, nothing herein shall supersede or modify the terms of any separate license agreement you may have executed with Licensor regarding such Contributions.
6. Trademarks. This License does not grant permission to use the trade names, trademarks, service marks, or product names of the Licensor, except as required for reasonable and customary use in describing the origin of the Work and reproducing the content of the NOTICE file.

7. Disclaimer of Warranty. Unless required by applicable law or agreed to in writing, Licensor provides the Work (and each Contributor provides its Contributions) on an "AS IS" BASIS, WITHOUT WARRANTIES OR CONDITIONS OF ANY KIND, either express or implied, including, without limitation, any warranties or conditions of TITLE, NON-INFRINGEMENT, MERCHANTABILITY, or FITNESS FOR A PARTICULAR PURPOSE. You are solely responsible for determining the appropriateness of using or redistributing the Work and assume any risks associated with Your exercise of permissions under this License.
8. Limitation of Liability. In no event and under no legal theory, whether in tort (including negligence), contract, or otherwise, unless required by applicable law (such as deliberate and grossly negligent acts) or agreed to in writing, shall any Contributor be liable to You for damages, including any direct, indirect, special, incidental, or consequential damages of any character arising as a result of this License or out of the use or inability to use the Work (including but not limited to damages for loss of goodwill, work stoppage, computer failure or malfunction, or any and all other commercial damages or losses), even if such Contributor has been advised of the possibility of such damages.
9. Accepting Warranty or Additional Liability. While redistributing the Work or Derivative Works thereof, You may choose to offer, and charge a fee for, acceptance of support, warranty, indemnity, or other liability obligations and/or rights consistent with this License. However, in accepting such obligations, You may act only on Your own behalf and on Your sole responsibility, not on behalf of any other Contributor, and only if You agree to indemnify, defend, and hold each Contributor harmless for any liability incurred by, or claims asserted against, such Contributor by reason of your accepting any such warranty or additional liability.

END OF TERMS AND CONDITIONS

---- Part 1: CMU/UCD copyright notice: (BSD like) ----

Copyright 1989, 1991, 1992 by Carnegie Mellon University

Derivative Work - 1996, 1998-2000

Copyright 1996, 1998-2000 The Regents of the University of California

All Rights Reserved

Permission to use, copy, modify and distribute this software and its documentation for any purpose and without fee is hereby granted, provided that the above copyright notice appears in all copies and that both that copyright notice and this permission notice appear in supporting documentation, and that the name of CMU and The Regents of the University of California not be used in advertising or publicity pertaining to distribution of the software without specific written permission.

CMU AND THE REGENTS OF THE UNIVERSITY OF CALIFORNIA DISCLAIM ALL WARRANTIES WITH REGARD TO THIS SOFTWARE, INCLUDING ALL IMPLIED WARRANTIES OF MERCHANTABILITY AND FITNESS. IN NO EVENT SHALL CMU OR THE REGENTS OF THE UNIVERSITY OF CALIFORNIA BE LIABLE FOR ANY SPECIAL, INDIRECT OR CONSEQUENTIAL DAMAGES OR ANY DAMAGES WHATSOEVER RESULTING FROM THE LOSS OF USE, DATA OR PROFITS, WHETHER IN AN ACTION OF CONTRACT, NEGLIGENCE OR OTHER TORTIOUS ACTION, ARISING OUT OF OR IN CONNECTION WITH THE USE OR PERFORMANCE OF THIS SOFTWARE.

---- Part 2: Networks Associates Technology, Inc copyright notice (BSD) ----

Copyright (c) 2001-2003, Networks Associates Technology, Inc

All rights reserved.

Redistribution and use in source and binary forms, with or without modification, are permitted provided that the following conditions are met:

- * Redistributions of source code must retain the above copyright notice, this list of conditions and the following disclaimer.
- * Redistributions in binary form must reproduce the above copyright notice, this list of conditions and the following disclaimer in the documentation and/or other materials provided with the distribution.
- * Neither the name of the Networks Associates Technology, Inc nor the names of its contributors may be used to endorse or promote products derived from this software without specific prior written permission.

THIS SOFTWARE IS PROVIDED BY THE COPYRIGHT HOLDERS AND CONTRIBUTORS ``AS IS" AND ANY EXPRESS OR IMPLIED WARRANTIES, INCLUDING, BUT NOT LIMITED TO, THE IMPLIED WARRANTIES OF MERCHANTABILITY AND FITNESS FOR A PARTICULAR PURPOSE ARE DISCLAIMED. IN NO EVENT SHALL THE COPYRIGHT HOLDERS OR CONTRIBUTORS BE LIABLE FOR ANY DIRECT, INDIRECT, INCIDENTAL, SPECIAL, EXEMPLARY, OR CONSEQUENTIAL DAMAGES (INCLUDING, BUT NOT LIMITED TO, PROCUREMENT OF SUBSTITUTE GOODS OR SERVICES; LOSS OF USE, DATA, OR PROFITS; OR BUSINESS INTERRUPTION) HOWEVER CAUSED AND ON ANY THEORY OF LIABILITY, WHETHER IN CONTRACT, STRICT LIABILITY, OR TORT (INCLUDING NEGLIGENCE OR OTHERWISE) ARISING IN ANY WAY OUT OF THE USE OF THIS SOFTWARE, EVEN IF ADVISED OF THE POSSIBILITY OF SUCH DAMAGE.

---- Part 3: Cambridge Broadband Ltd. copyright notice (BSD) ----

Portions of this code are copyright (c) 2001-2003, Cambridge Broadband Ltd.

All rights reserved.

Redistribution and use in source and binary forms, with or without modification, are permitted provided that the following conditions are met:

- * Redistributions of source code must retain the above copyright notice, this list of conditions and the following disclaimer.
- * Redistributions in binary form must reproduce the above copyright notice, this list of conditions and the following disclaimer in the documentation and/or other materials provided with the distribution.
- * The name of Cambridge Broadband Ltd. may not be used to endorse or promote products derived from this software without specific prior written permission.

THIS SOFTWARE IS PROVIDED BY THE COPYRIGHT HOLDER ``AS IS" AND ANY EXPRESS OR IMPLIED WARRANTIES, INCLUDING, BUT NOT LIMITED TO, THE IMPLIED WARRANTIES OF MERCHANTABILITY AND FITNESS FOR A PARTICULAR PURPOSE ARE DISCLAIMED. IN NO EVENT SHALL THE COPYRIGHT HOLDER BE LIABLE FOR ANY DIRECT, INDIRECT, INCIDENTAL, SPECIAL, EXEMPLARY, OR CONSEQUENTIAL DAMAGES (INCLUDING, BUT NOT LIMITED TO, PROCUREMENT OF SUBSTITUTE GOODS OR SERVICES; LOSS OF USE, DATA, OR PROFITS; OR BUSINESS INTERRUPTION) HOWEVER CAUSED AND ON ANY THEORY OF LIABILITY, WHETHER IN CONTRACT, STRICT LIABILITY, OR TORT (INCLUDING NEGLIGENCE OR OTHERWISE) ARISING IN ANY WAY OUT OF THE USE OF THIS SOFTWARE, EVEN IF ADVISED OF THE POSSIBILITY OF SUCH DAMAGE.

---- Part 4: Sun Microsystems, Inc. copyright notice (BSD) ----

Copyright c 2003 Sun Microsystems, Inc., 4150 Network Circle, Santa Clara, California 95054, U.S.A. All rights reserved.

Use is subject to license terms below.

This distribution may include materials developed by third parties.

Sun, Sun Microsystems, the Sun logo and Solaris are trademarks or registered trademarks of Sun Microsystems, Inc. in the U.S. and other countries.

Redistribution and use in source and binary forms, with or without modification, are permitted provided that the following conditions are met:

- * Redistributions of source code must retain the above copyright notice, this list of conditions and the following disclaimer.
- * Redistributions in binary form must reproduce the above copyright notice, this list of conditions and the following disclaimer in the documentation and/or other materials provided with the distribution.
- * Neither the name of the Sun Microsystems, Inc. nor the names of its contributors may be used to endorse or promote products derived from this software without specific prior written permission.

THIS SOFTWARE IS PROVIDED BY THE COPYRIGHT HOLDERS AND CONTRIBUTORS ``AS IS" AND ANY EXPRESS OR IMPLIED WARRANTIES, INCLUDING, BUT NOT LIMITED TO, THE IMPLIED WARRANTIES OF MERCHANTABILITY AND FITNESS FOR A PARTICULAR PURPOSE ARE DISCLAIMED. IN NO EVENT SHALL THE COPYRIGHT HOLDERS OR CONTRIBUTORS BE LIABLE FOR ANY DIRECT, INDIRECT, INCIDENTAL, SPECIAL, EXEMPLARY, OR CONSEQUENTIAL DAMAGES (INCLUDING, BUT NOT LIMITED TO, PROCUREMENT OF SUBSTITUTE GOODS OR SERVICES; LOSS OF USE, DATA, OR PROFITS; OR BUSINESS INTERRUPTION) HOWEVER CAUSED AND ON ANY THEORY OF LIABILITY, WHETHER IN CONTRACT, STRICT LIABILITY, OR TORT (INCLUDING NEGLIGENCE OR OTHERWISE) ARISING IN ANY WAY OUT OF THE USE OF THIS SOFTWARE, EVEN IF ADVISED OF THE POSSIBILITY OF SUCH DAMAGE.

---- Part 5: Sparta, Inc copyright notice (BSD) ----

Copyright (c) 2003-2012, Sparta, Inc

All rights reserved.

Redistribution and use in source and binary forms, with or without modification, are permitted provided that the following conditions are met:

- * Redistributions of source code must retain the above copyright notice, this list of conditions and the following disclaimer.
- * Redistributions in binary form must reproduce the above copyright notice, this list of conditions and the following disclaimer in the documentation and/or other materials provided with the distribution.
- * Neither the name of Sparta, Inc nor the names of its contributors may be used to endorse or promote products derived from this software without specific prior written permission.

THIS SOFTWARE IS PROVIDED BY THE COPYRIGHT HOLDERS AND CONTRIBUTORS ``AS IS" AND ANY EXPRESS OR IMPLIED WARRANTIES, INCLUDING, BUT NOT LIMITED TO, THE IMPLIED WARRANTIES OF MERCHANTABILITY AND FITNESS FOR A PARTICULAR PURPOSE ARE DISCLAIMED. IN NO EVENT SHALL THE COPYRIGHT HOLDERS OR CONTRIBUTORS BE LIABLE FOR ANY DIRECT, INDIRECT, INCIDENTAL, SPECIAL, EXEMPLARY, OR CONSEQUENTIAL DAMAGES (INCLUDING, BUT NOT LIMITED TO, PROCUREMENT OF SUBSTITUTE GOODS OR SERVICES; LOSS OF USE, DATA, OR PROFITS; OR BUSINESS INTERRUPTION) HOWEVER CAUSED AND ON ANY THEORY OF LIABILITY, WHETHER IN CONTRACT, STRICT LIABILITY, OR

TORT (INCLUDING NEGLIGENCE OR OTHERWISE) ARISING IN ANY WAY OUT OF THE USE OF THIS SOFTWARE, EVEN IF ADVISED OF THE POSSIBILITY OF SUCH DAMAGE.

---- Part 6: Cisco/BUPTNIC copyright notice (BSD) ----

Copyright (c) 2004, Cisco, Inc and Information Network Center of Beijing University of Posts and Telecommunications.

All rights reserved.

Redistribution and use in source and binary forms, with or without modification, are permitted provided that the following conditions are met:

- * Redistributions of source code must retain the above copyright notice, this list of conditions and the following disclaimer.
- * Redistributions in binary form must reproduce the above copyright notice, this list of conditions and the following disclaimer in the documentation and/or other materials provided with the distribution.
- * Neither the name of Cisco, Inc, Beijing University of Posts and Telecommunications, nor the names of their contributors may be used to endorse or promote products derived from this software without specific prior written permission.

THIS SOFTWARE IS PROVIDED BY THE COPYRIGHT HOLDERS AND CONTRIBUTORS ``AS IS" AND ANY EXPRESS OR IMPLIED WARRANTIES, INCLUDING, BUT NOT LIMITED TO, THE IMPLIED WARRANTIES OF MERCHANTABILITY AND FITNESS FOR A PARTICULAR PURPOSE ARE DISCLAIMED. IN NO EVENT SHALL THE COPYRIGHT HOLDERS OR CONTRIBUTORS BE LIABLE FOR ANY DIRECT, INDIRECT, INCIDENTAL, SPECIAL, EXEMPLARY, OR CONSEQUENTIAL DAMAGES (INCLUDING, BUT NOT LIMITED TO, PROCUREMENT OF SUBSTITUTE GOODS OR SERVICES; LOSS OF USE, DATA, OR PROFITS; OR BUSINESS INTERRUPTION) HOWEVER CAUSED AND ON ANY THEORY OF LIABILITY, WHETHER IN CONTRACT, STRICT LIABILITY, OR TORT (INCLUDING NEGLIGENCE OR OTHERWISE) ARISING IN ANY WAY OUT OF THE USE OF THIS SOFTWARE, EVEN IF ADVISED OF THE POSSIBILITY OF SUCH DAMAGE.

---- Part 7: Fabasoft R&D Software GmbH & Co KG copyright notice (BSD) ----

Copyright (c) Fabasoft R&D Software GmbH & Co KG, 2003 oss@fabasoft.com

Author: Bernhard Penz <bernhard.penz@fabasoft.com>

Redistribution and use in source and binary forms, with or without modification, are permitted provided that the following conditions are met:

- * Redistributions of source code must retain the above copyright notice, this list of conditions and the following disclaimer.
- * Redistributions in binary form must reproduce the above copyright notice, this list of conditions and the following disclaimer in the documentation and/or other materials provided with the distribution.
- * The name of Fabasoft R&D Software GmbH & Co KG or any of its subsidiaries, brand or product names may not be used to endorse or promote products derived from this software without specific prior written permission.

THIS SOFTWARE IS PROVIDED BY THE COPYRIGHT HOLDER ``AS IS" AND ANY EXPRESS OR IMPLIED WARRANTIES, INCLUDING, BUT NOT LIMITED TO, THE IMPLIED WARRANTIES OF MERCHANTABILITY AND FITNESS FOR A PARTICULAR PURPOSE ARE DISCLAIMED. IN NO EVENT SHALL THE COPYRIGHT HOLDER BE LIABLE FOR ANY DIRECT, INDIRECT, INCIDENTAL,

SPECIAL, EXEMPLARY, OR CONSEQUENTIAL DAMAGES (INCLUDING, BUT NOT LIMITED TO, PROCUREMENT OF SUBSTITUTE GOODS OR SERVICES; LOSS OF USE, DATA, OR PROFITS; OR BUSINESS INTERRUPTION) HOWEVER CAUSED AND ON ANY THEORY OF LIABILITY, WHETHER IN CONTRACT, STRICT LIABILITY, OR TORT (INCLUDING NEGLIGENCE OR OTHERWISE) ARISING IN ANY WAY OUT OF THE USE OF THIS SOFTWARE, EVEN IF ADVISED OF THE POSSIBILITY OF SUCH DAMAGE.

---- Part 8: Apple Inc. copyright notice (BSD) ----

Copyright (c) 2007 Apple Inc. All rights reserved.

Redistribution and use in source and binary forms, with or without modification, are permitted provided that the following conditions are met:

1. Redistributions of source code must retain the above copyright notice, this list of conditions and the following disclaimer.
2. Redistributions in binary form must reproduce the above copyright notice, this list of conditions and the following disclaimer in the documentation and/or other materials provided with the distribution.
3. Neither the name of Apple Inc. ("Apple") nor the names of its contributors may be used to endorse or promote products derived from this software without specific prior written permission.

THIS SOFTWARE IS PROVIDED BY APPLE AND ITS CONTRIBUTORS "AS IS" AND ANY EXPRESS OR IMPLIED WARRANTIES, INCLUDING, BUT NOT LIMITED TO, THE IMPLIED WARRANTIES OF MERCHANTABILITY AND FITNESS FOR A PARTICULAR PURPOSE ARE DISCLAIMED. IN NO EVENT SHALL APPLE OR ITS CONTRIBUTORS BE LIABLE FOR ANY DIRECT, INDIRECT, INCIDENTAL, SPECIAL, EXEMPLARY, OR CONSEQUENTIAL DAMAGES (INCLUDING, BUT NOT LIMITED TO, PROCUREMENT OF SUBSTITUTE GOODS OR SERVICES; LOSS OF USE, DATA, OR PROFITS; OR BUSINESS INTERRUPTION) HOWEVER CAUSED AND ON ANY THEORY OF LIABILITY, WHETHER IN CONTRACT, STRICT LIABILITY, OR TORT (INCLUDING NEGLIGENCE OR OTHERWISE) ARISING IN ANY WAY OUT OF THE USE OF THIS SOFTWARE, EVEN IF ADVISED OF THE POSSIBILITY OF SUCH DAMAGE.

---- Part 9: ScienceLogic, LLC copyright notice (BSD) ----

Copyright (c) 2009, ScienceLogic, LLC

All rights reserved.

Redistribution and use in source and binary forms, with or without modification, are permitted provided that the following conditions are met:

- * Redistributions of source code must retain the above copyright notice, this list of conditions and the following disclaimer.
- * Redistributions in binary form must reproduce the above copyright notice, this list of conditions and the following disclaimer in the documentation and/or other materials provided with the distribution.
- * Neither the name of ScienceLogic, LLC nor the names of its contributors may be used to endorse or promote products derived from this software without specific prior written permission.

THIS SOFTWARE IS PROVIDED BY THE COPYRIGHT HOLDERS AND CONTRIBUTORS "AS IS" AND ANY EXPRESS OR IMPLIED WARRANTIES, INCLUDING, BUT NOT LIMITED TO, THE IMPLIED WARRANTIES OF MERCHANTABILITY AND FITNESS FOR A PARTICULAR PURPOSE ARE DISCLAIMED. IN NO EVENT SHALL THE COPYRIGHT HOLDERS OR CONTRIBUTORS BE LIABLE

FOR ANY DIRECT, INDIRECT, INCIDENTAL, SPECIAL, EXEMPLARY, OR CONSEQUENTIAL DAMAGES (INCLUDING, BUT NOT LIMITED TO, PROCUREMENT OF SUBSTITUTE GOODS OR SERVICES; LOSS OF USE, DATA, OR PROFITS; OR BUSINESS INTERRUPTION) HOWEVER CAUSED AND ON ANY THEORY OF LIABILITY, WHETHER IN CONTRACT, STRICT LIABILITY, OR TORT (INCLUDING NEGLIGENCE OR OTHERWISE) ARISING IN ANY WAY OUT OF THE USE OF THIS SOFTWARE, EVEN IF ADVISED OF THE POSSIBILITY OF SUCH DAMAGE.

LEADTOOLS

Copyright (C) 1991-2009 LEAD Technologies, Inc.

CMap Resources

Copyright 1990-2009 Adobe Systems Incorporated.

All rights reserved.

Copyright 1990-2010 Adobe Systems Incorporated.

All rights reserved.

Redistribution and use in source and binary forms, with or without modification, are permitted provided that the following conditions are met:

Redistributions of source code must retain the above copyright notice, this list of conditions and the following disclaimer.

Redistributions in binary form must reproduce the above copyright notice, this list of conditions and the following disclaimer in the documentation and/or other materials provided with the distribution.

Neither the name of Adobe Systems Incorporated nor the names of its contributors may be used to endorse or promote products derived from this software without specific prior written permission.

THIS SOFTWARE IS PROVIDED BY THE COPYRIGHT HOLDERS AND CONTRIBUTORS "AS IS" AND ANY EXPRESS OR IMPLIED WARRANTIES, INCLUDING, BUT NOT LIMITED TO, THE IMPLIED WARRANTIES OF MERCHANTABILITY AND FITNESS FOR A PARTICULAR PURPOSE ARE DISCLAIMED. IN NO EVENT SHALL THE COPYRIGHT HOLDER OR CONTRIBUTORS BE LIABLE FOR ANY DIRECT, INDIRECT, INCIDENTAL, SPECIAL, EXEMPLARY, OR CONSEQUENTIAL DAMAGES (INCLUDING, BUT NOT LIMITED TO, PROCUREMENT OF SUBSTITUTE GOODS OR SERVICES; LOSS OF USE, DATA, OR PROFITS; OR BUSINESS INTERRUPTION) HOWEVER CAUSED AND ON ANY THEORY OF LIABILITY, WHETHER IN CONTRACT, STRICT LIABILITY, OR TORT (INCLUDING NEGLIGENCE OR OTHERWISE) ARISING IN ANY WAY OUT OF THE USE OF THIS SOFTWARE, EVEN IF ADVISED OF THE POSSIBILITY OF SUCH DAMAGE.

MIT License

Copyright (c) 1998, 1999, 2000 Thai Open Source Software Center Ltd

Permission is hereby granted, free of charge, to any person obtaining a copy of this software and associated documentation files (the "Software"), to deal in the Software without restriction, including without limitation the rights to use, copy, modify, merge, publish, distribute, sublicense, and/or sell copies of the Software, and to permit persons to whom the Software is furnished to do so, subject to the following conditions:

The above copyright notice and this permission notice shall be included in all copies or substantial portions of the Software.

THE SOFTWARE IS PROVIDED "AS IS", WITHOUT WARRANTY OF ANY KIND, EXPRESS OR IMPLIED, INCLUDING BUT NOT LIMITED TO THE WARRANTIES OF MERCHANTABILITY, FITNESS FOR A PARTICULAR PURPOSE AND NONINFRINGEMENT. IN NO EVENT SHALL THE AUTHORS OR COPYRIGHT HOLDERS BE LIABLE FOR ANY CLAIM, DAMAGES OR OTHER LIABILITY, WHETHER IN AN ACTION OF CONTRACT, TORT OR OTHERWISE, ARISING FROM, OUT OF OR IN CONNECTION WITH THE SOFTWARE OR THE USE OR OTHER DEALINGS IN THE SOFTWARE.

Copyright 2000 Computing Research Labs, New Mexico State University

Copyright 2001-2015 Francesco Zappa Nardelli

Permission is hereby granted, free of charge, to any person obtaining a copy of this software and associated documentation files (the "Software"), to deal in the Software without restriction, including without limitation the rights to use, copy, modify, merge, publish, distribute, sublicense, and/or sell copies of the Software, and to permit persons to whom the Software is furnished to do so, subject to the following conditions:

The above copyright notice and this permission notice shall be included in all copies or substantial portions of the Software.

THE SOFTWARE IS PROVIDED "AS IS", WITHOUT WARRANTY OF ANY KIND, EXPRESS OR IMPLIED, INCLUDING BUT NOT LIMITED TO THE WARRANTIES OF MERCHANTABILITY, FITNESS FOR A PARTICULAR PURPOSE AND NONINFRINGEMENT. IN NO EVENT SHALL THE COMPUTING RESEARCH LAB OR NEW MEXICO STATE UNIVERSITY BE LIABLE FOR ANY CLAIM, DAMAGES OR OTHER LIABILITY, WHETHER IN AN ACTION OF CONTRACT, TORT OR OTHERWISE, ARISING FROM, OUT OF OR IN CONNECTION WITH THE SOFTWARE OR THE USE OR OTHER DEALINGS IN THE SOFTWARE.

Written by Joel Sherrill <joel@OARcorp.com>.

COPYRIGHT (c) 1989-2000.

On-Line Applications Research Corporation (OAR).

Permission to use, copy, modify, and distribute this software for any purpose without fee is hereby granted, provided that this entire notice is included in all copies of any software which is or includes a copy or modification of this software.

THIS SOFTWARE IS BEING PROVIDED "AS IS", WITHOUT ANY EXPRESS OR IMPLIED WARRANTY. IN PARTICULAR, THE AUTHOR MAKES NO REPRESENTATION OR WARRANTY OF ANY KIND

CONCERNING THE MERCHANTABILITY OF THIS SOFTWARE OR ITS FITNESS FOR ANY PARTICULAR PURPOSE.

(1) Red Hat Incorporated

Copyright (c) 1994-2009 Red Hat, Inc. All rights reserved.

This copyrighted material is made available to anyone wishing to use, modify, copy, or redistribute it subject to the terms and conditions of the BSD License. This program is distributed in the hope that it will be useful, but WITHOUT ANY WARRANTY expressed or implied, including the implied warranties of MERCHANTABILITY or FITNESS FOR A PARTICULAR PURPOSE. A copy of this license is available at <http://www.opensource.org/licenses>. Any Red Hat trademarks that are incorporated in the source code or documentation are not subject to the BSD License and may only be used or replicated with the express permission of Red Hat, Inc.

(2) University of California, Berkeley

Copyright (c) 1981-2000 The Regents of the University of California.

All rights reserved.

Redistribution and use in source and binary forms, with or without modification, are permitted provided that the following conditions are met:

- * Redistributions of source code must retain the above copyright notice, this list of conditions and the following disclaimer.
- * Redistributions in binary form must reproduce the above copyright notice, this list of conditions and the following disclaimer in the documentation and/or other materials provided with the distribution.
- * Neither the name of the University nor the names of its contributors may be used to endorse or promote products derived from this software without specific prior written permission.

THIS SOFTWARE IS PROVIDED BY THE COPYRIGHT HOLDERS AND CONTRIBUTORS "AS IS" AND ANY EXPRESS OR IMPLIED WARRANTIES, INCLUDING, BUT NOT LIMITED TO, THE IMPLIED WARRANTIES OF MERCHANTABILITY AND FITNESS FOR A PARTICULAR PURPOSE ARE DISCLAIMED. IN NO EVENT SHALL THE COPYRIGHT OWNER OR CONTRIBUTORS BE LIABLE FOR ANY DIRECT, INDIRECT, INCIDENTAL, SPECIAL, EXEMPLARY, OR CONSEQUENTIAL DAMAGES (INCLUDING, BUT NOT LIMITED TO, PROCUREMENT OF SUBSTITUTE GOODS OR SERVICES; LOSS OF USE, DATA, OR PROFITS; OR BUSINESS INTERRUPTION) HOWEVER CAUSED AND ON ANY THEORY OF LIABILITY, WHETHER IN CONTRACT, STRICT LIABILITY, OR TORT (INCLUDING NEGLIGENCE OR OTHERWISE) ARISING IN ANY WAY OUT OF THE USE OF THIS SOFTWARE, EVEN IF ADVISED OF THE POSSIBILITY OF SUCH DAMAGE.

The FreeType Project LICENSE

2006-Jan-27

Copyright 1996-2002, 2006 by

David Turner, Robert Wilhelm, and Werner Lemberg

Introduction

=====

The FreeType Project is distributed in several archive packages; some of them may contain, in addition to the FreeType font engine, various tools and contributions which rely on, or relate to, the FreeType Project.

This license applies to all files found in such packages, and which do not fall under their own explicit license. The license affects thus the FreeType font engine, the test programs, documentation and makefiles, at the very least.

This license was inspired by the BSD, Artistic, and IJG (Independent JPEG Group) licenses, which all encourage inclusion and use of free software in commercial and freeware products alike. As a consequence, its main points are that:

- o We don't promise that this software works. However, we will be interested in any kind of bug reports. ('as is' distribution)
- o You can use this software for whatever you want, in parts or full form, without having to pay us. ('royalty-free' usage)
- o You may not pretend that you wrote this software. If you use it, or only parts of it, in a program, you must acknowledge somewhere in your documentation that you have used the FreeType code. ('credits')

We specifically permit and encourage the inclusion of this software, with or without modifications, in commercial products.

We disclaim all warranties covering The FreeType Project and assume no liability related to The FreeType Project.

Finally, many people asked us for a preferred form for a credit/disclaimer to use in compliance with this license. We thus encourage you to use the following text:

""

Portions of this software are copyright © <year> The FreeType Project (www.freetype.org). All rights reserved.

""

Please replace <year> with the value from the FreeType version you actually use.

Legal Terms

=====

0. Definitions

Throughout this license, the terms 'package', 'FreeType Project', and 'FreeType archive' refer to the set of files originally distributed by the authors (David Turner, Robert Wilhelm, and Werner Lemberg) as the 'FreeType Project', be they named as alpha, beta or final release.

'You' refers to the licensee, or person using the project, where 'using' is a generic term including compiling the project's source code as well as linking it to form a 'program' or 'executable'.

This program is referred to as 'a program using the FreeType engine'.

This license applies to all files distributed in the original FreeType Project, including all source code, binaries and documentation, unless otherwise stated in the file in its original, unmodified form as distributed in the original archive.

If you are unsure whether or not a particular file is covered by this license, you must contact us to verify this.

The FreeType Project is copyright (C) 1996-2000 by David Turner, Robert Wilhelm, and Werner Lemberg.
All rights reserved except as specified below.

1. No Warranty

THE FREETYPE PROJECT IS PROVIDED 'AS IS' WITHOUT WARRANTY OF ANY KIND, EITHER EXPRESS OR IMPLIED, INCLUDING, BUT NOT LIMITED TO, WARRANTIES OF MERCHANTABILITY AND FITNESS FOR A PARTICULAR PURPOSE. IN NO EVENT WILL ANY OF THE AUTHORS OR COPYRIGHT HOLDERS BE LIABLE FOR ANY DAMAGES CAUSED BY THE USE OR THE INABILITY TO USE, OF THE FREETYPE PROJECT.

2. Redistribution

This license grants a worldwide, royalty-free, perpetual and irrevocable right and license to use, execute, perform, compile, display, copy, create derivative works of, distribute and sublicense the FreeType Project (in both source and object code forms) and derivative works thereof for any purpose; and to authorize others to exercise some or all of the rights granted herein, subject to the following conditions:

- o Redistribution of source code must retain this license file ('FTL.TXT') unaltered; any additions, deletions or changes to the original files must be clearly indicated in accompanying documentation. The copyright notices of the unaltered, original files must be preserved in all copies of source files.

- o Redistribution in binary form must provide a disclaimer that states that the software is based in part of the work of the FreeType Team, in the distribution documentation. We also encourage you to put an URL to the FreeType web page in your documentation, though this isn't mandatory.

These conditions apply to any software derived from or based on the FreeType Project, not just the unmodified files. If you use our work, you must acknowledge us. However, no fee need be paid to us.

3. Advertising

Neither the FreeType authors and contributors nor you shall use the name of the other for commercial, advertising, or promotional purposes without specific prior written permission.

We suggest, but do not require, that you use one or more of the following phrases to refer to this software in your documentation or advertising materials: 'FreeType Project', 'FreeType Engine', 'FreeType library', or 'FreeType Distribution'.

As you have not signed this license, you are not required to accept it. However, as the FreeType Project is copyrighted material, only this license, or another one contracted with the authors, grants you the right to use, distribute, and modify it.

Therefore, by using, distributing, or modifying the FreeType Project, you indicate that you understand and accept all the terms of this license.

4. Contacts

There are two mailing lists related to FreeType:

- o freetype@nongnu.org

Discusses general use and applications of FreeType, as well as future and wanted additions to the library and distribution.

If you are looking for support, start in this list if you haven't found anything to help you in the documentation.

o freetype-devel@nongnu.org

Discusses bugs, as well as engine internals, design issues, specific licenses, porting, etc.

Our home page can be found at

<http://www.freetype.org>

--- end of FTL.TXT ---

The TWAIN Toolkit is distributed as is. The developer and distributors of the TWAIN Toolkit expressly disclaim all implied, express or statutory warranties including, without limitation, the implied warranties of merchantability, noninfringement of third party rights and fitness for a particular purpose. Neither the developers nor the distributors will be liable for damages, whether direct, indirect, special, incidental, or consequential, as a result of the reproduction, modification, distribution or other use of the TWAIN Toolkit.

JSON for Modern C++

Copyright (c) 2013-2017 Niels Lohmann

Permission is hereby granted, free of charge, to any person obtaining a copy of this software and associated documentation files (the "Software"), to deal in the Software without restriction, including without limitation the rights to use, copy, modify, merge, publish, distribute, sublicense, and/or sell copies of the Software, and to permit persons to whom the Software is furnished to do so, subject to the following conditions:

The above copyright notice and this permission notice shall be included in all copies or substantial portions of the Software.

THE SOFTWARE IS PROVIDED "AS IS", WITHOUT WARRANTY OF ANY KIND, EXPRESS OR IMPLIED, INCLUDING BUT NOT LIMITED TO THE WARRANTIES OF MERCHANTABILITY, FITNESS FOR A PARTICULAR PURPOSE AND NONINFRINGEMENT. IN NO EVENT SHALL THE AUTHORS OR COPYRIGHT HOLDERS BE LIABLE FOR ANY CLAIM, DAMAGES OR OTHER LIABILITY, WHETHER IN AN ACTION OF CONTRACT, TORT OR OTHERWISE, ARISING FROM, OUT OF OR IN CONNECTION WITH THE SOFTWARE OR THE USE OR OTHER DEALINGS IN THE SOFTWARE.

Copyright (c) 2011 - 2015 ARM LIMITED

All rights reserved.

Redistribution and use in source and binary forms, with or without modification, are permitted provided that the following conditions are met:

- Redistributions of source code must retain the above copyright notice, this list of conditions and the following disclaimer.
- Redistributions in binary form must reproduce the above copyright notice, this list of conditions and the following disclaimer in the documentation and/or other materials provided with the distribution.
- Neither the name of ARM nor the names of its contributors may be used to endorse or promote products derived from this software without specific prior written permission.

THIS SOFTWARE IS PROVIDED BY THE COPYRIGHT HOLDERS AND CONTRIBUTORS "AS IS" AND ANY EXPRESS OR IMPLIED WARRANTIES, INCLUDING, BUT NOT LIMITED TO, THE IMPLIED WARRANTIES OF MERCHANTABILITY AND FITNESS FOR A PARTICULAR PURPOSE ARE DISCLAIMED. IN NO EVENT SHALL COPYRIGHT HOLDERS AND CONTRIBUTORS BE LIABLE FOR ANY DIRECT, INDIRECT, INCIDENTAL, SPECIAL, EXEMPLARY, OR CONSEQUENTIAL DAMAGES (INCLUDING, BUT NOT LIMITED TO, PROCUREMENT OF SUBSTITUTE GOODS OR SERVICES; LOSS OF USE, DATA, OR PROFITS; OR BUSINESS INTERRUPTION) HOWEVER CAUSED AND ON ANY THEORY OF LIABILITY, WHETHER IN CONTRACT, STRICT LIABILITY, OR TORT (INCLUDING NEGLIGENCE OR OTHERWISE) ARISING IN ANY WAY OUT OF THE USE OF THIS SOFTWARE, EVEN IF ADVISED OF THE POSSIBILITY OF SUCH DAMAGE.

The following applies only to products supporting Wi-Fi.

(c) 2009-2013 by Jeff Mott. All rights reserved.

Redistribution and use in source and binary forms, with or without modification, are permitted provided that the following conditions are met:

- * Redistributions of source code must retain the above copyright notice, this list of conditions, and the following disclaimer.
- * Redistributions in binary form must reproduce the above copyright notice, this list of conditions, and the following disclaimer in the documentation or other materials provided with the distribution.
- * Neither the name CryptoJS nor the names of its contributors may be used to endorse or promote products derived from this software without specific prior written permission.

THIS SOFTWARE IS PROVIDED BY THE COPYRIGHT HOLDERS AND CONTRIBUTORS "AS IS," AND ANY EXPRESS OR IMPLIED WARRANTIES, INCLUDING, BUT NOT LIMITED TO, THE IMPLIED WARRANTIES OF MERCHANTABILITY AND FITNESS FOR A PARTICULAR PURPOSE, ARE DISCLAIMED. IN NO EVENT SHALL THE COPYRIGHT HOLDER OR CONTRIBUTORS BE LIABLE FOR ANY DIRECT, INDIRECT, INCIDENTAL, SPECIAL, EXEMPLARY, OR CONSEQUENTIAL DAMAGES (INCLUDING, BUT NOT LIMITED TO, PROCUREMENT OF SUBSTITUTE GOODS OR SERVICES; LOSS OF USE, DATA, OR PROFITS; OR BUSINESS INTERRUPTION) HOWEVER CAUSED AND ON ANY THEORY OF LIABILITY, WHETHER IN CONTRACT, STRICT LIABILITY, OR TORT (INCLUDING NEGLIGENCE OR OTHERWISE) ARISING IN ANY WAY OUT OF THE USE OF THIS SOFTWARE, EVEN IF ADVISED OF THE POSSIBILITY OF SUCH DAMAGE.

Free Layout plus Guide

➤ General Notes (Free Layout plus)

➤ The Features of Free Layout plus

➤ Starting Free Layout plus and Inputting Data

- Starting from a Regular Application
- Starting from an Application Supporting Plug-in
- Starting from PosterArtist
- Starting from Start Menu

➤ Free Layout plus Screen Explanations

- Free Layout plus Home Screen
- Fixed Layout Mode
- Free Layout Mode
- Tiling Mode
- Folded Duplex Mode
- Favorites
- Options Dialog
- Canon Free Layout plus Ribbon (Office Plug-in)

➤ Various Free Layout plus Features

- Inputting Multiple-file Documents into Free Layout plus
- Inputting Documents Created Using Multiple Applications into Free Layout plus
- Correctly Laying Out and Printing Objects
- Laying Out and Printing Objects as You Like
 - Selecting an Object
 - Changing the Object Size
 - Moving an Object
 - Rotating an Object
 - Laying out Objects Automatically

- Aligning Objects
- Changing the Object Overlapping Order
- Pasting a Copied or Cut Object
- Dividing and Printing Objects
- Printing as Folded Duplex
- Printing Curtains/Banners

General Notes (Free Layout plus)

When using **Canon Free Layout plus** (hereafter **Free Layout plus**), the following restrictions apply. Please familiarize yourself with them before using it.

- **Free Layout plus** supports imagePROGRAF Printer Driver Ver. 5.00 or later for Windows.
- This guide primarily provides explanations using the screens that are displayed when you use the Windows 10 operating system (hereafter, Windows 10).
- Apply the latest Windows Update.
- If a print job has a large amount of data or multiple pages, the application may not start or the print job may fail to be sent from the application. Also, the images may be grainy or defective when they are printed. In such cases, try the following methods. If you cannot resolve the situation, print directly from the printer driver, without using **Free Layout plus**.
 - Add expanded memory to your PC, or enlarge the virtual memory.
 - If you are using Adobe Illustrator, switch the on/off setting of the Bitmap print item in the print dialog box.
 - Change the print quality.
 - Open the **Print Options** dialog from the Print Settings screen of the printer driver for **Canon Free Layout plus** to change the settings for the **Reduce resolution to prevent loss of print data** check box.
 - If the OS is the 32 bit version, try the 64 bit version of the OS.
- Sometimes the print preview display may differ from the actual print position. If this occurs, make a slight adjustment in the position of the object.
- The hues of the print preview and the image displayed in the software application (Adobe Photoshop, etc.) may be slightly different.
- The appearance of text and fine lines in the print preview may be different from what you see in the print result.
- Sometimes a print job can be lost if **Free Layout plus** is shut down during the print job.
- When **Borderless Printing** is set to **On**, the display in the view includes parts that are trimmed.
- When you install this software, the virtual printer **Canon Free Layout plus** is installed. If you want to use this software, do not uninstall the virtual printer **Canon Free Layout plus**.
- Printing is not possible from shared printers or redirected printers.
- Plug-in functions for Microsoft Office are compatible with the following versions of the application software.
 - Microsoft Word (2010/2013/2016/2019)
 - Microsoft PowerPoint (2010/2013/2016/2019)
 - Microsoft Excel (2010/2013/2016/2019)
- The **Canon Free Layout plus** ribbon might not be displayed in Microsoft Office after installing **Free Layout plus**. For details, refer to "[Canon Free Layout plus Ribbon Is Not Displayed](#)" in "Starting from an Application Supporting Plug-in".

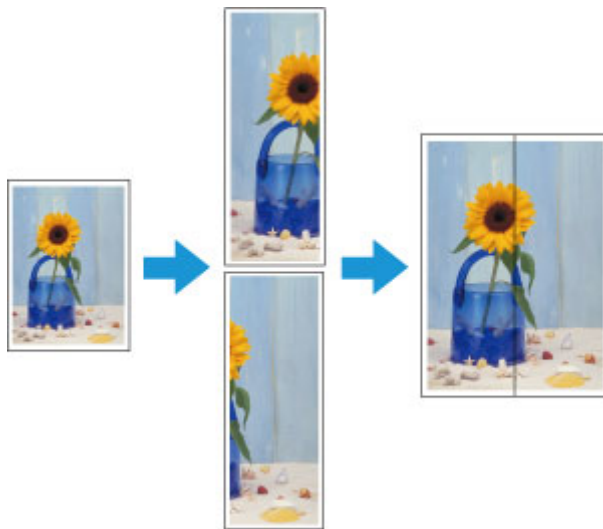
- When you open an Office document from a web browser, the plug-in does not run correctly.
- If you are editing an embedded object or link object, the plug-in will not run correctly.
- If you added the **Canon Free Layout plus** ribbon to the Microsoft Office Quick Access toolbar, the plug-in will not run correctly.
- When using the plug-in, an error dialog may appear for some data because the information required for printing or data analysis cannot be acquired. If this occurs, print from the **Canon Free Layout plus** virtual printer driver.
- When using the plug-in, the layout may collapse if you execute **Large-format settings** using existing data. If that is the case, modify the data again.
- When using the plug-in, if the range selected in Microsoft Excel is too large, it will not be possible to analyze the data. Select a smaller range and then run the analysis.
- The initial startup and printout may take some time, depending on the environment.
- Operation may be abnormal if the number of paper sizes registered in the OS exceeds a certain number.
- In Startup, If you disable **Canon Free Layout plus Service**, it will not run correctly.

The Features of Free Layout plus

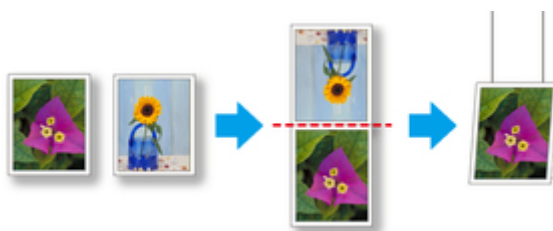
The main features of **Free Layout plus** are as follows.

Able to Arrange in Various Layouts

- Allows you to lay out at will and print a document created with application software.
You can save paper by laying out efficiently.
- You can not only lay out multiple pages on one page but also lay out and print a multiple-file document on one page, or lay out and print a document created with multiple application programs on one page.
- Allows you to print an image from one page onto multiple sheets of paper. You can align the printouts and glue them together to create a larger printed image.



- Any two pages can be arranged and printed in a layout that becomes duplex on folding.
This can be used such as for advertising posters that are suspended from the ceiling.



Output Easily from Microsoft Office

- **Free Layout plus** takes over the Print Plug-In for Office function and you can output from the Microsoft Office applications supporting the plugin to **Free Layout plus**.
- Custom sizes in large-format printing can also be set in a wizard interface from Microsoft Word and Microsoft PowerPoint.
- Custom size can be set automatically from Microsoft Excel.

Print Preview with Improved User-friendliness

- You can check the layout on the preview screen.

You can change the layout while checking the actual output image, so you can make the output workflow efficient.

Starting Free Layout plus and Inputting Data

- **Starting from a Regular Application**
- **Starting from an Application Supporting Plug-in**
- **Starting from PosterArtist**
- **Starting from Start Menu**

Starting from a Regular Application

Use the following procedure to start **Free Layout plus** and load data to print from a regular application software using **Free Layout plus**.

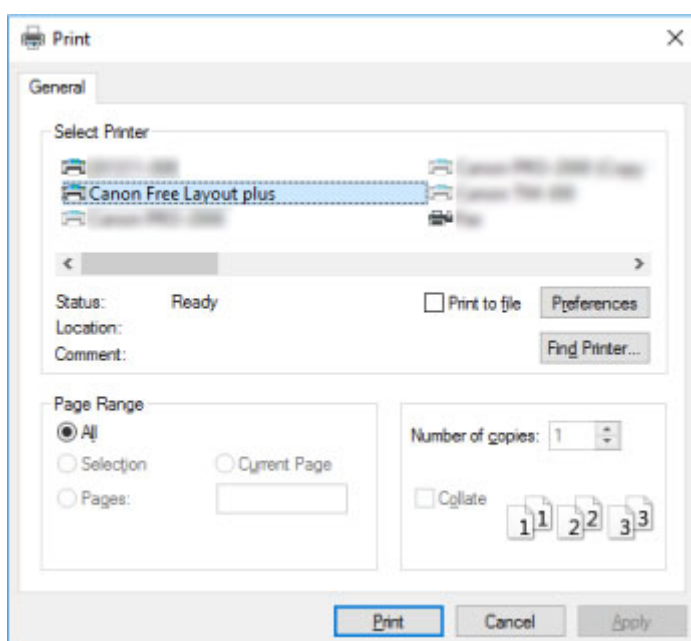
1. Open the Print dialog box.

To open the Print dialog box, select the print menu in the application software in which the print data is opened.

►►► Note

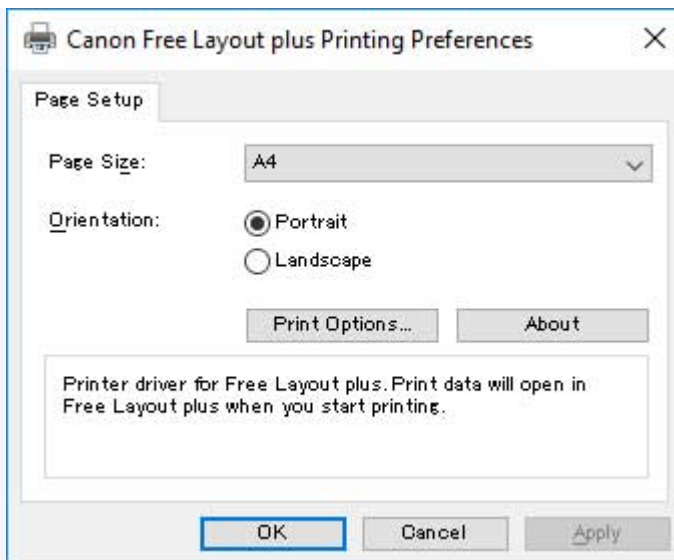
- Normally, select Print from the File menu.

2. Select **Canon Free Layout plus** from the printers you can use.



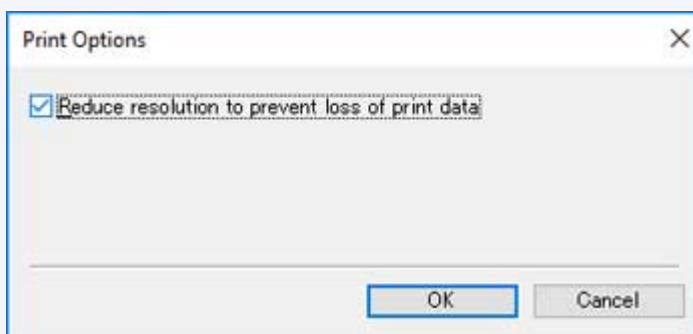
►►► Note

- If you cannot set the paper size and orientation of the printout in the screen for selecting a printer, click Preferences or Printer properties, and do the settings from the **Printing Preferences** dialog. The way to open the **Printing Preferences** dialog varies depending on the application.



- You may be able to improve print results by using the check box for **Reduce resolution to prevent loss of print data** in **Print Options**.

If the images printed are grainy, clear the check box, and the fine lines printed are thick, select the check box. However, depending on the data, a print job may occasionally fail.



3. Execute printing.

Free Layout plus starts.

The data you edited in the application software appears in the **Input Data List** on the home screen. (See "[Free Layout plus Home Screen](#).")

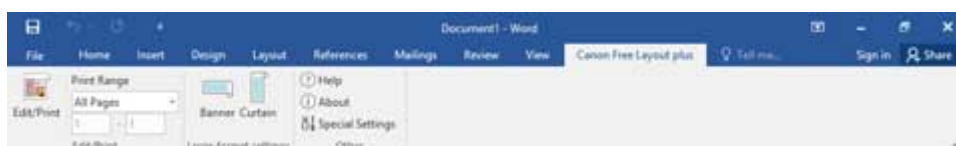
Starting from an Application Supporting Plug-in

To print data of Microsoft Office application software supporting the plug-in by using **Free Layout plus**, use the following procedure to start **Free Layout plus** and input data.

▶▶▶ Note

- The following explanation uses the screens that are displayed when you use Microsoft Word.

1. Start Microsoft Word.
2. Confirm that the **Canon Free Layout plus** ribbon is displayed.



▶▶▶ Important

- If the **Canon Free Layout plus** ribbon is not displayed, refer to "[Canon Free Layout plus Ribbon Is Not Displayed](#)".

3. Click **Edit/Print**.

Free Layout plus starts.

The data you edited in the Office application appears in the **Input Data List** on the home screen. (See "[Free Layout plus Home Screen](#)".)

Canon Free Layout plus Ribbon Is Not Displayed

The **Canon Free Layout plus** ribbon may not appear in Word, PowerPoint or Excel Office applications, and the **Free Layout plus** functions may not be available.

In this event, re-install **Free Layout plus**.

You can also enable add-ins to display **Canon Free Layout plus**.

See below for the procedure for re-installing the plug-in or enabling add-ins.

Re-installing Free Layout plus

If a problem occurs, such as the system or an application terminating abnormally, the Office application disables add-ins as a safety precaution.

In this event, you will need to re-install **Canon Free Layout plus** to display the **Free Layout plus** ribbon.

▶▶▶ Note

- You cannot re-install **Free Layout plus** once an Office application is running. When the message appears, select **Cancel** and close the active Office application.

Re-install **Free Layout plus** as follows:

1. Close Office application if it is open.

2. Install **Free Layout plus**.

Enable Free Layout plus from the Options in the Office Application

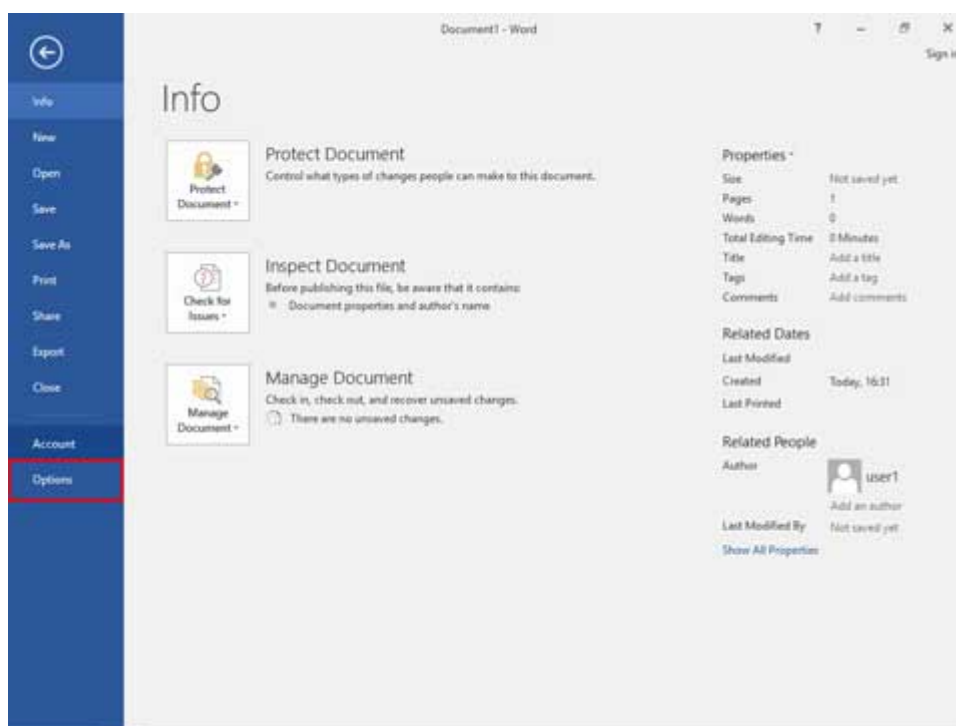
If a problem occurs, such as the system or an application terminating abnormally, the Office application disables add-ins as a safety precaution.

In this event, you will need to restore the disabled add-ins in order to display the **Canon Free Layout plus** ribbon.

Use the procedure below to restore the add-ins disabled by Office application.

1. Select **Options** from the **File** menu.

Select **Options** from the **File** menu on the Office application.



2. From the list on the left side of the <application name> options dialog box, select **Add-ins**.

4. Close all the dialog boxes and restart the Office application.

Starting from PosterArtist

Use the following procedure to start **Free Layout plus** and load data to print from PosterArtist using **Free Layout plus**.

▶▶▶ Note

- See the manual for PosterArtist regarding the basic operations for PosterArtist.

1. Start PosterArtist.
2. Select a template.
3. Set the items in the Paper Options screen, and then check **Edit layout with Free Layout plus**.

▶▶▶ Note

- If you check **Edit layout with Free Layout plus**, then you cannot set the following items.
 - Printer
 - Media Source
 - Media Type
 - Roll Paper Width
 - Borderless Printing
 - Enlarged/Reduced Printing
- If a message appears related to **Free Layout plus** after you check **Edit layout with Free Layout plus**, click OK.

4. Edit the print data.
5. In the Print screen, click **Print (Start Free Layout plus)**.

Free Layout plus starts.

The data you edited in PosterArtist appears in the **Input Data List** on the home screen. (See "[Free Layout plus Home Screen](#).")

Starting from the Start Menu

Start **Free Layout plus** from the **Start** menu.

Starting Free Layout plus

Open **All programs** > Canon Utilities (> **Free Layout plus**) from the **Start** menu, and then click **Free Layout plus**.

Adding Data

Add data to **Free Layout plus**.

1. Click **Open** from the **File** menu.

The screen to add data appears.

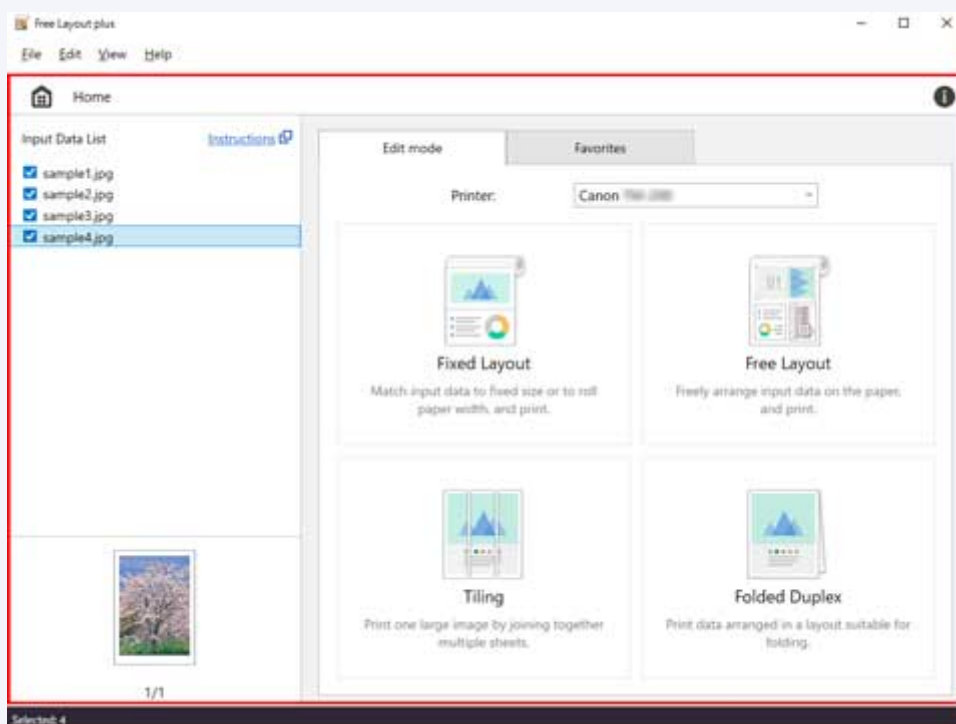
2. Select the data to input, and then click **Open**.

To add more data, repeat steps 1 and 2.

►► Note

- You can also add data by directly dragging and dropping it onto the **Home** screen.

For details, refer to "[Free Layout plus Home Screen](#)".



- Supported data types are image data (JPEG/PNG/BMP/TIFF/GIF), and Office data (Word/Excel/PowerPoint).
- Data can be input only from the **Free Layout plus Home** screen.

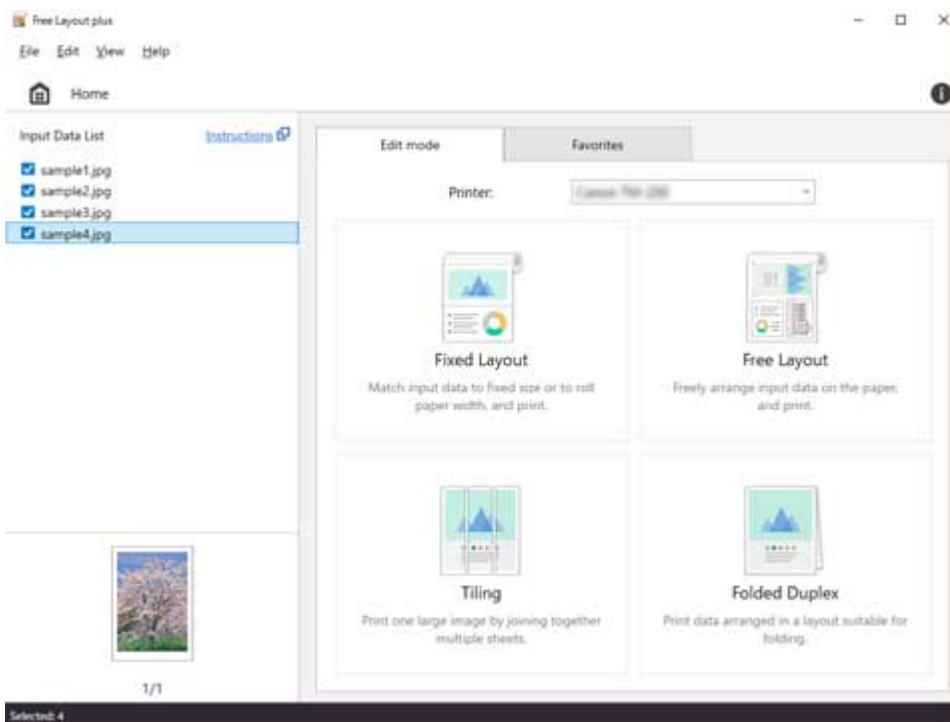
Free Layout plus Screen Explanations

- **Free Layout plus Home Screen**
- **Fixed Layout Mode**
- **Free Layout Mode**
- **Tiling Mode**
- **Folded Duplex Mode**
- **Favorites**
- **Options Dialog**
- **Canon Free Layout plus Ribbon (Office Plug-in)**

Free Layout plus Home Screen

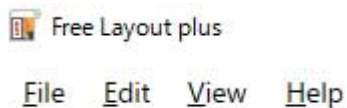
When you start **Free Layout plus**, the home screen appears.

In the home screen, you can select a printer to use and edit modes that suit your objectives.



Menu Bar

This allows you to select menus required for operations.



Input Data List

Displays a list of input data and thumbnails.

Data displayed in this list that has a check mark can be edited after Edit mode is selected. Click a check box to switch it.

You can also input data from **Open** in the **File** menu, or by dragging and dropping it onto the **Home** screen.

You can switch the order by dragging the data in the **Input Data List**.

Input Data List

[Instructions](#) 

- ☒ sample1.jpg
- ☒ sample2.jpg
- ☒ sample3.jpg
- ☒ sample4.jpg



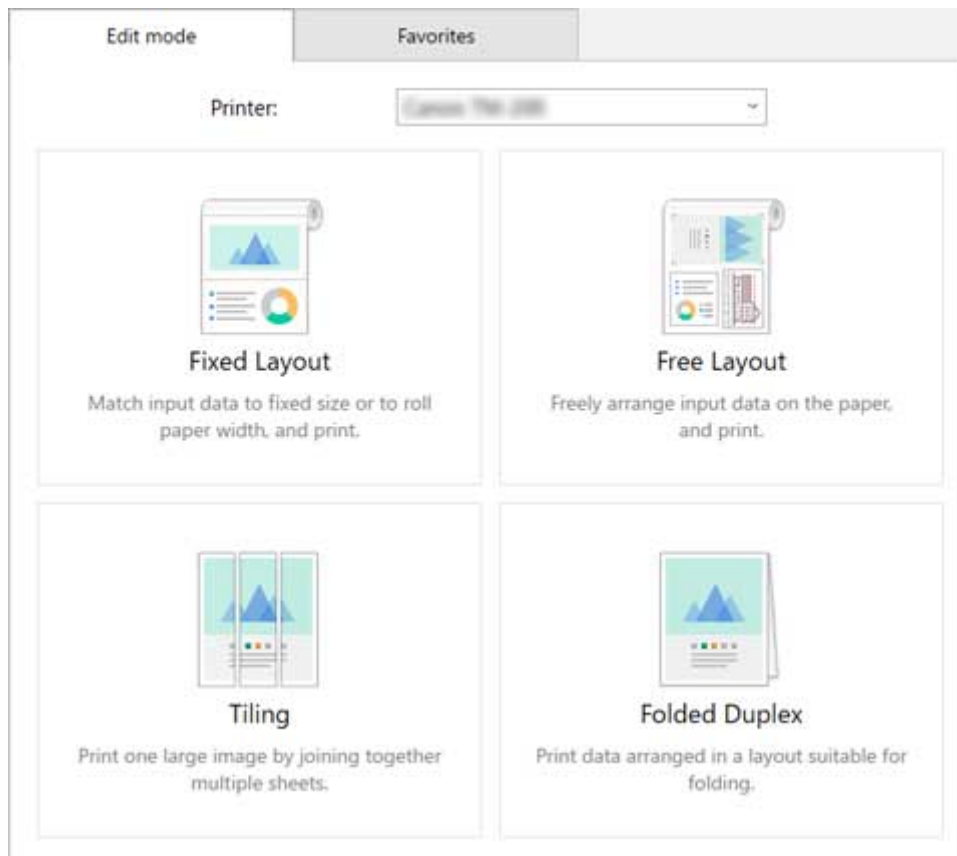
1/1

»» Note

- Right-clicking on a file name in **Input Data List** and selecting **Delete** allows you to delete that data from the list.
- File input using dragging and dropping is possible only on the home screen.

Edit mode Sheet

From the **Edit mode** sheet, you can select a printer to use and an edit mode from four edit modes.



There are the following four edit modes.

Fixed Layout

Lay out multiple pages to the width of roll paper or on standard size paper, and then print them.

Free Layout

Lay out multiple pages as you like on roll paper, and then print them.

Tiling

Divide a single page, and then print it.

You can align the printouts and glue them together to create a larger printed image.

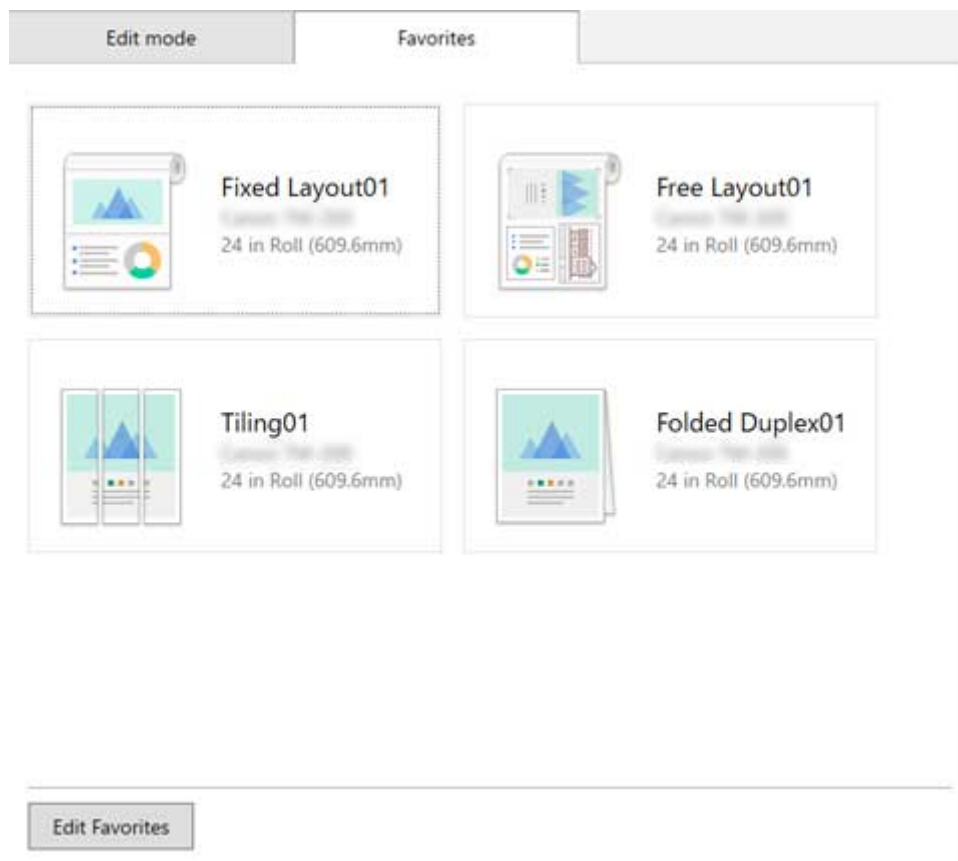
Folded Duplex

Lay out two pages and print them so you can fold them to create a two-sided printout.

Favorites Sheet

Displayed when you click the **Favorites** tab. You can select a combination of a printer, an edit mode, and edit/print settings that have been registered in advance.

See "[Favorites](#)" regarding the method to register settings to the **Favorites** sheet.



Status Bar

Displays information, such as the number of data that are selected and the paper size.

Selected: 4

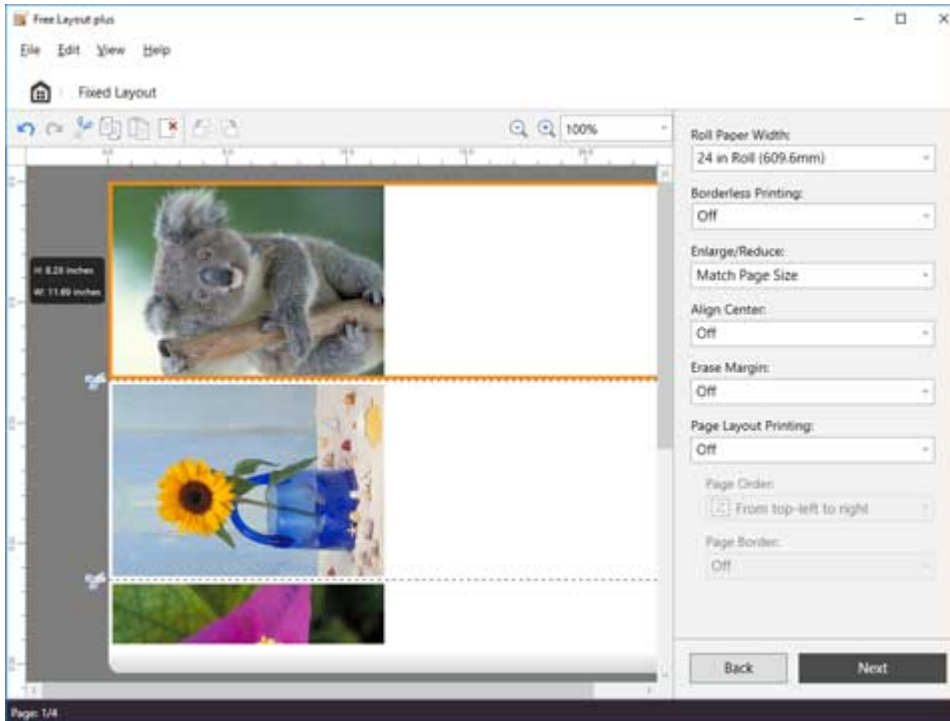
►►► Note

- You can use the **View** menu to show or hide the status bar.

Fixed Layout Mode

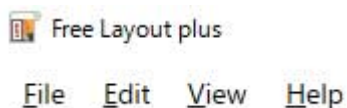
Clicking **Fixed Layout** on the home screen opens the Fixed Layout mode.

In Fixed Layout mode, you can position data uniformly over the width of roll paper or standard size paper, and print it.



Menu Bar


This allows you to select menus required for operations.



Main Area

In this area, you can position images and make print settings.

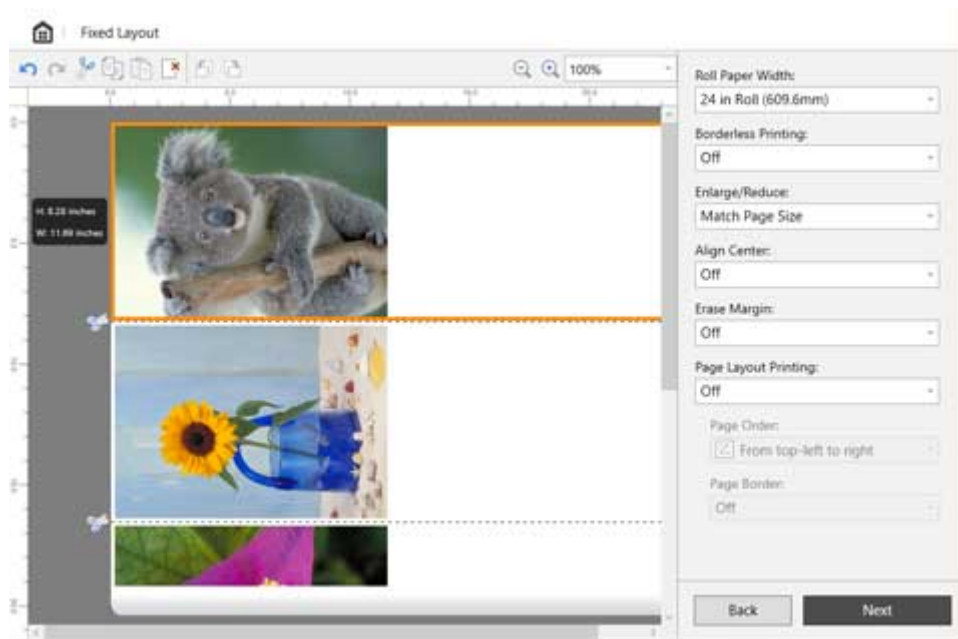
➤➤➤ Note

- Click  in the main area to return to the home screen.

Edit Screen

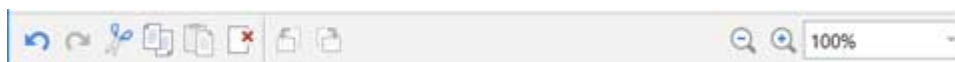
Set the layout and roll paper width as you check a preview of the print results.

Clicking **Next** closes editing and moves you to the print settings screen.



Tool Bar

This allows you to select tool buttons required for major operations.



Undo

Reverses the last edit.

You can also perform **Undo** from the **Edit** menu.



Redo

Restores the last edit.

You can also perform **Redo** from the **Edit** menu.



Cut

Cuts the selected object.

You can also perform **Cut** from the **Edit** menu.



Copy

Copies the selected object.

You can also perform **Copy** from the **Edit** menu.



Paste

Pastes the cut or copied object.

You can also perform **Paste** from the **Edit** menu.



Delete

Deletes the selected object.

You can also perform **Delete** from the **Edit** menu.



Rotate Left 90 Degrees

Rotates the selected object 90 degrees to the left.

Enabled when **Page Layout Printing** is set.



Rotate Right 90 Degrees

Rotates the selected object 90 degrees to the right.

Enabled when **Page Layout Printing** is set.



98%

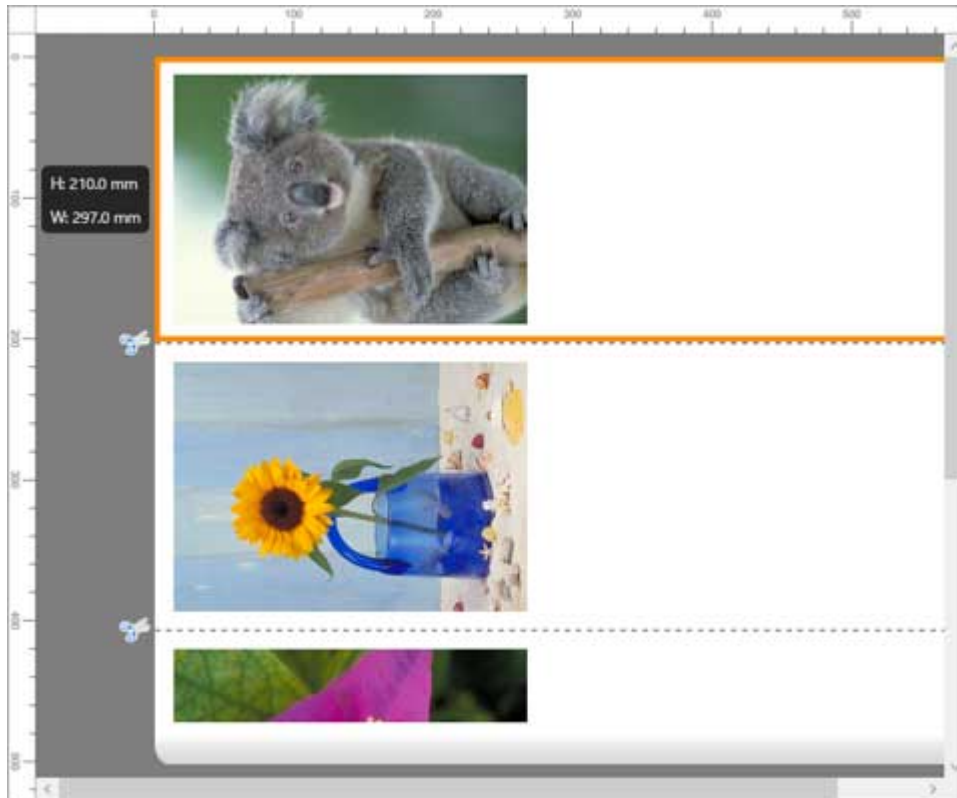
(Enlarge/Reduce View)

Allows you to change the scaling ratio in the preview screen.

Preview Area

Shows a preview of the print results at the current settings.

You can change the order of the objects by dragging them.



Edit Settings Area

Set the roll paper width and the layout of the page.

Roll Paper Width:
24 in Roll (609.6mm) ▾

Borderless Printing:
Off ▾

Enlarge/Reduce:
Match Page Size ▾

Align Center:
Off ▾

Erase Margin:
Off ▾

Page Layout Printing:
Off ▾

Page Order:
☒ From top-left to right ▾

Page Border:
Off ▾

Back Next

Roll Paper Width

Set the width of the roll paper.

Borderless Printing

Set whether to use borderless printing.

Setting this to **On** expands the print area to both edges and to the leading edge of the paper.

Enlarge/Reduce

Select the size setting for all objects.

You can match the long or short sides to the width of the roll paper by selecting **Fit Short Side to Roll Paper Width** or **Fit Long Side to Roll Paper Width**.

Align Center

Set the layout of all objects to be aligned centered horizontally on the roll paper.

Erase Margin

Set whether to automatically erase the white area around all objects and fit them to the width of the page.

Page Layout Printing

You can conserve paper by printing multiple pages together on one piece of paper.

Select from **2-on-1 Printing** / **4-on-1 Printing** / **6-on-1 Printing** / **9-on-1 Printing** / **16-on-1 Printing** for the page layout.

Enabled when **Borderless Printing** is **Off**.

Page Order

Specify the page order for when doing **Page Layout Printing**.

Setting item	Details
From top-left to right	Objects are positioned from top-left to right.
From top-left to bottom	Objects are positioned from top-left to bottom.
From top-right to left	Objects are positioned from top-right to left.
From top-right to bottom	Objects are positioned from top-right to bottom.
From lower-left to right	Objects are positioned from lower-left to right.
From lower-left to top	Objects are positioned from lower-left to top.
From lower-right to left	Objects are positioned from lower-right to left.
From lower-right to top	Objects are positioned from lower-right to top.

- When doing **2-on-1 Printing**, there are 8 page orders that can be set in **Page Layout Printing**; however, in actuality, the page orders are top to bottom / bottom to top or left to right / right to left.
- Optimal positioning is automatically done for the page order and the direction of each page according to the objects and various settings. If you want to change the default positioning, change the settings for page order or rotate the objects.

Page Border

A page border can appear around the allocated pages.

On

A page border appears around the area of the allocated pages.

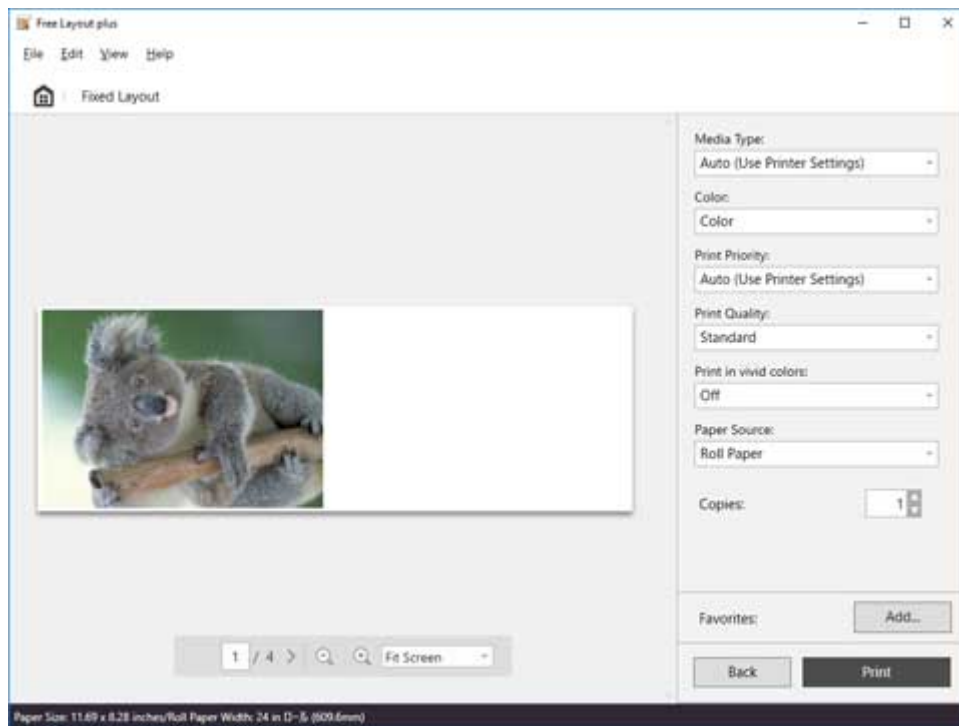
Off

A page border does not appear.

Print Settings Screen

Click **Next** in the edit screen, and then make the print settings.

After setting the various items, click **Print** to start printing.



Preview Area

Shows a preview of the print results for each page.



Print Settings Area

Make the settings related to printing, such as the type of paper.

Media Type:
Auto (Use Printer Settings) ▾

Color:
Color ▾

Print Priority:
Auto (Use Printer Settings) ▾

Print Quality:
Standard ▾

Print in vivid colors:
Off ▾

Paper Source:
Roll Paper ▾

Copies: 1 ▴ ▾

Favorites: Add

Back Print

Media Type

Set the type of paper to print on.

Color

Set either **Color** or **Monochrome** for the color to print.

Print Priority

Set the elements to specifically emphasize in the print results.

Print Quality

Select the print quality that suits your objectives.

Print in vivid colors

Set whether to print in vivid colors.

Paper Source

Set the source from which paper is supplied.

Copies


Set the number of copies to print.

Favorites

You can register the settings that are currently set in the edit screen and the print settings screen to **Favorites** by clicking **Add**. You can easily call up the settings that are registered in **Favorites** from the **Favorites** sheet on the home screen.

Status Bar

Displays information, such as the number of data that are selected and the paper size.



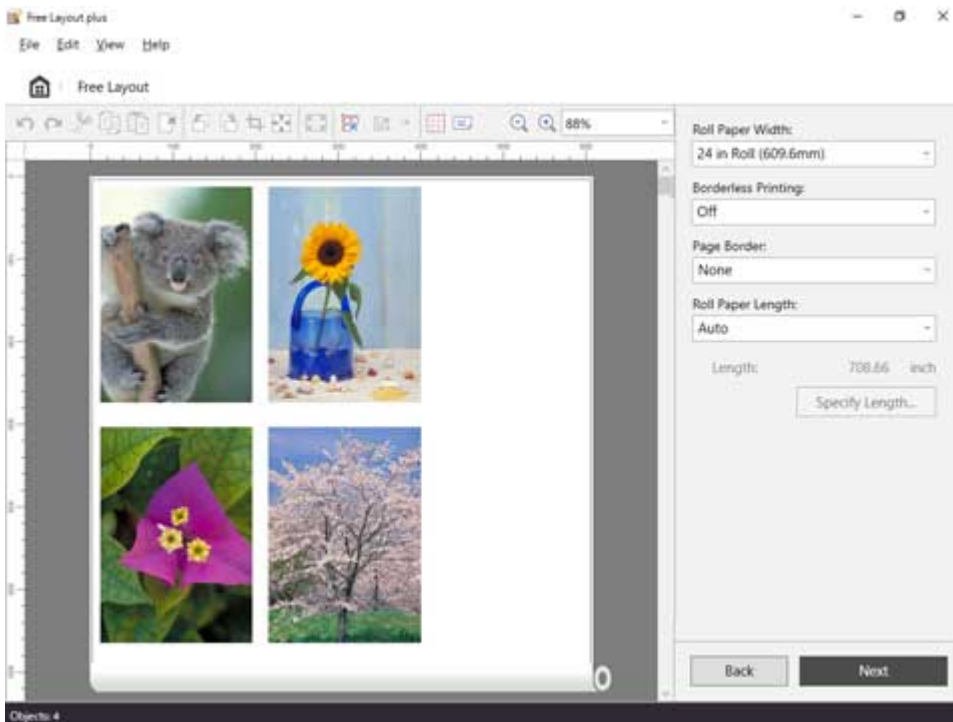
Note

- You can use the **View** menu to show or hide the tool and status bar.

Free Layout Mode

Clicking **Free Layout** on the home screen opens the Free Layout mode.

In the Free Layout mode, lay out data to be printed as you like on roll paper, and then print it.

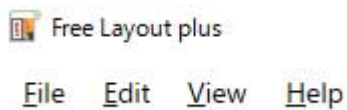


»» Note

- See "[Laying Out and Printing Objects as You Like](#)" regarding how to lay out data to print in the Free Layout mode.

Menu Bar


This allows you to select menus required for operations.



Main Area

In this area, you can lay out images and do print settings.

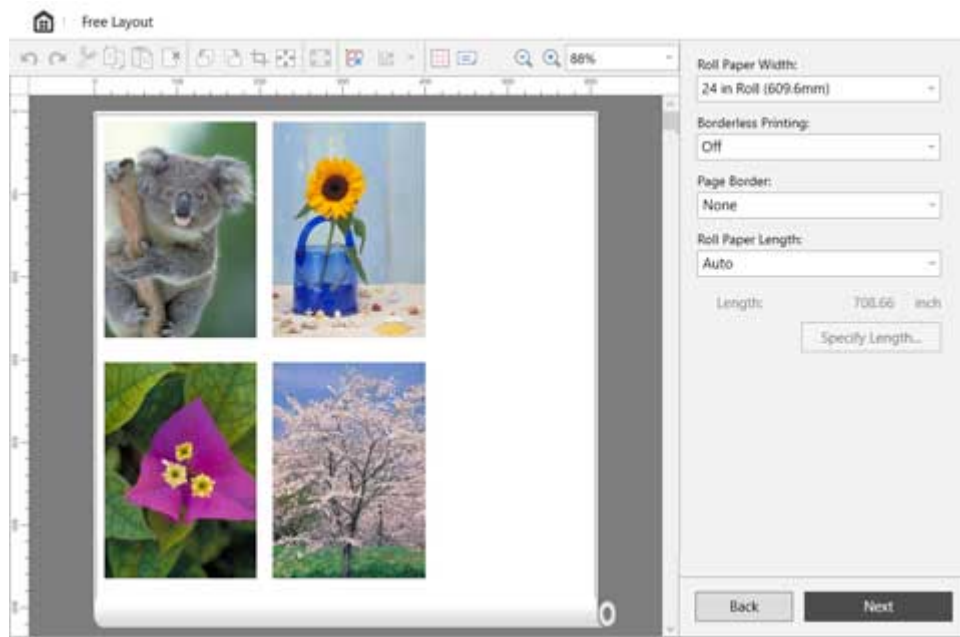
»» Note

- Click  in the main area to return to the home screen.

Edit Screen

Set the layout and roll paper width as you check a preview of the print results.

Clicking **Next** closes editing and moves you to the print settings screen.



Tool Bar

This allows you to select tool buttons required for major operations.



Undo

Reverses the last edit.

You can also execute **Undo** from the **Edit** menu.



Redo

Restores the last edit.

You can also execute **Redo** from the **Edit** menu.



Cut

Cuts the selected object.

You can also execute **Cut** from the **Edit** menu.



Copy

Copies the selected object.

You can also execute **Copy** from the **Edit** menu.



Paste

Pastes the cut or copied object.

You can also execute **Paste** from the **Edit** menu.



Delete

Deletes the selected object.

You can also execute **Delete** from the **Edit** menu.



Rotate Left 90 Degrees

Rotates the selected object 90 degrees to the left.

**Rotate Right 90 Degrees**

Rotates the selected object 90 degrees to the right.

**Crop**

Cuts the selected object within any range.

You cannot do other editing operations while cropping.

**Erase Margin**

Erases the margin of the selected object.

**Fit**

Enlarges or reduces the selected object to fit the width of the roll paper.

**Auto Arrange Object**

Lays out all the objects automatically.

You can change the spacing and order of the objects in the **Options** dialog.

**Align**

Lays out the selected objects in the specified way.

You can select the way to lay out objects by clicking ▼.

**Align Top****Center Vertically****Align Bottom****Align Left****Center Horizontally****Align Right****Grid**

Shows gridlines in the preview.

**Rotate View**

Rotates the preview 90 degrees to the left. Click it again to go back.

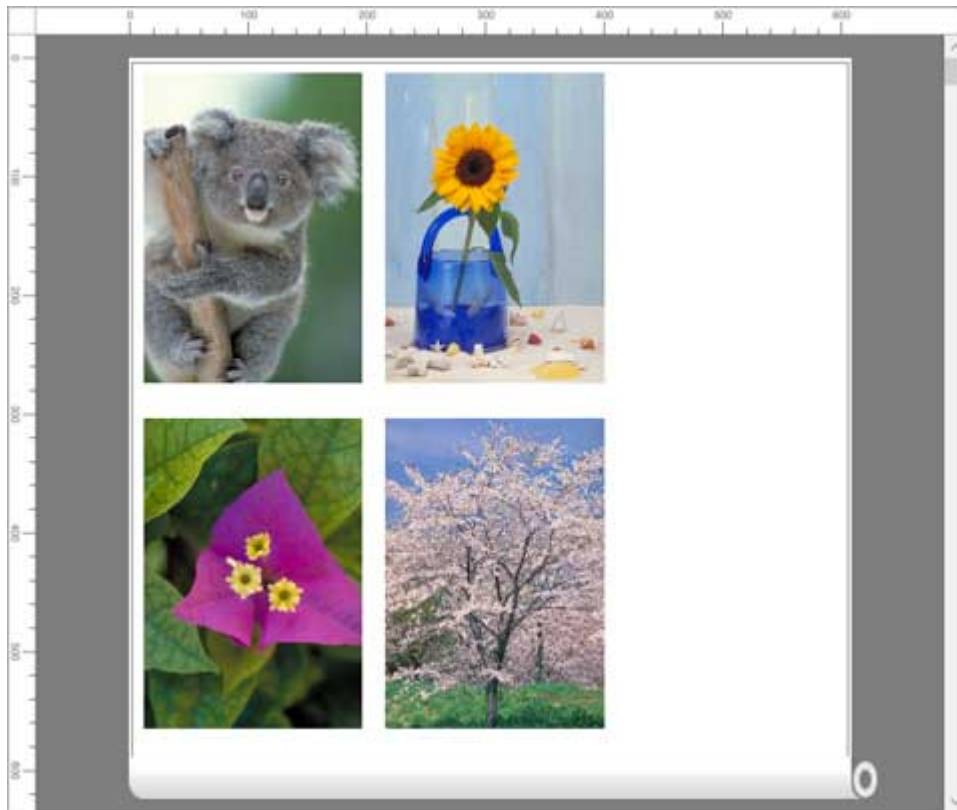
**(Enlarge/Reduce View)**

Allows you to change the scaling ratio in the preview screen.

Preview Area

Shows a preview of the print results at the current settings.

In addition, you can change the layout of objects as you like by dragging them.



Edit Settings Area

Do the settings related to roll paper width and page layout.

Roll Paper Width:
24 in Roll (609.6mm)

Borderless Printing:
Off

Page Border:
None

Roll Paper Length:
Auto

Length: 708.66 inch

Specify Length...

Back Next

Roll Paper Width

Set the width of the roll paper.

Borderless Printing

Set whether to do borderless printing.

Setting this to **On** expands the print area to both edges and to the leading edge of the paper.

Page Border

Set the border of objects to print.

Select from **None**, **Full Width (Solid)**, or **Full Width (Dotted)**.

Roll Paper Length

Specify the roll paper length to use for printing. Select either **Auto** or **Custom**.

If **Auto** is selected, the length at which all objects fit is calculated and considered to be the length of the print paper.

If **Custom** is selected, the value set in **Specify Length** is the length of the print paper.

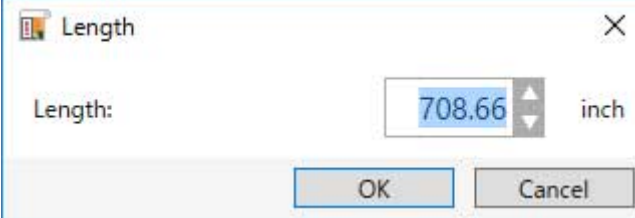
Length

Shows the set **Roll Paper Length**.

Specify Length

Click to show the dialog for specifying the **Length**.

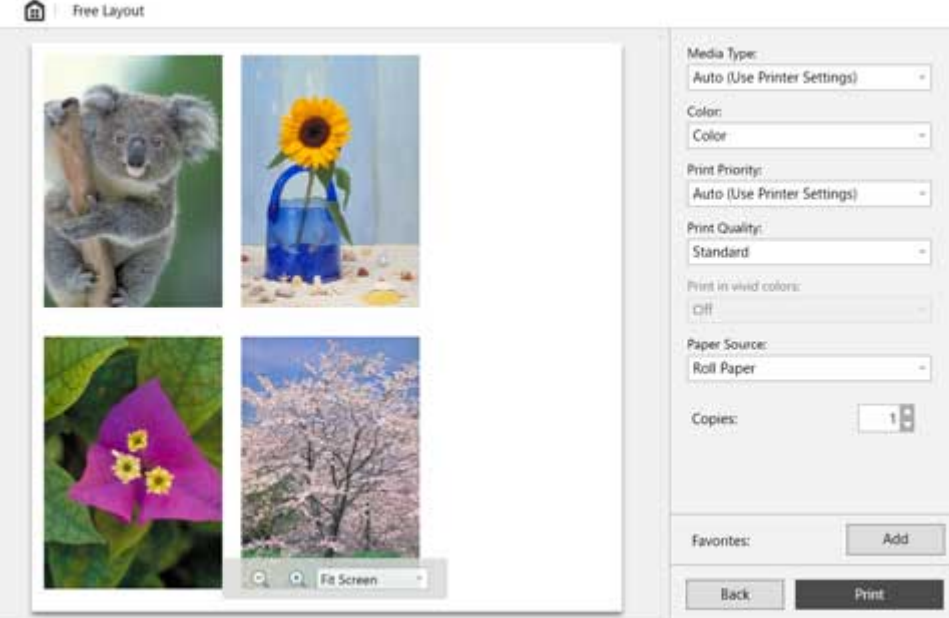
Enabled when **Custom** in **Roll Paper Length** is selected.

A dialog box titled "Length" with a close button (X) in the top right corner. It contains a label "Length:" followed by a text input field containing the value "708.66" and a unit label "inch" to its right. Below the input field are two buttons: "OK" and "Cancel".

Print Settings Screen

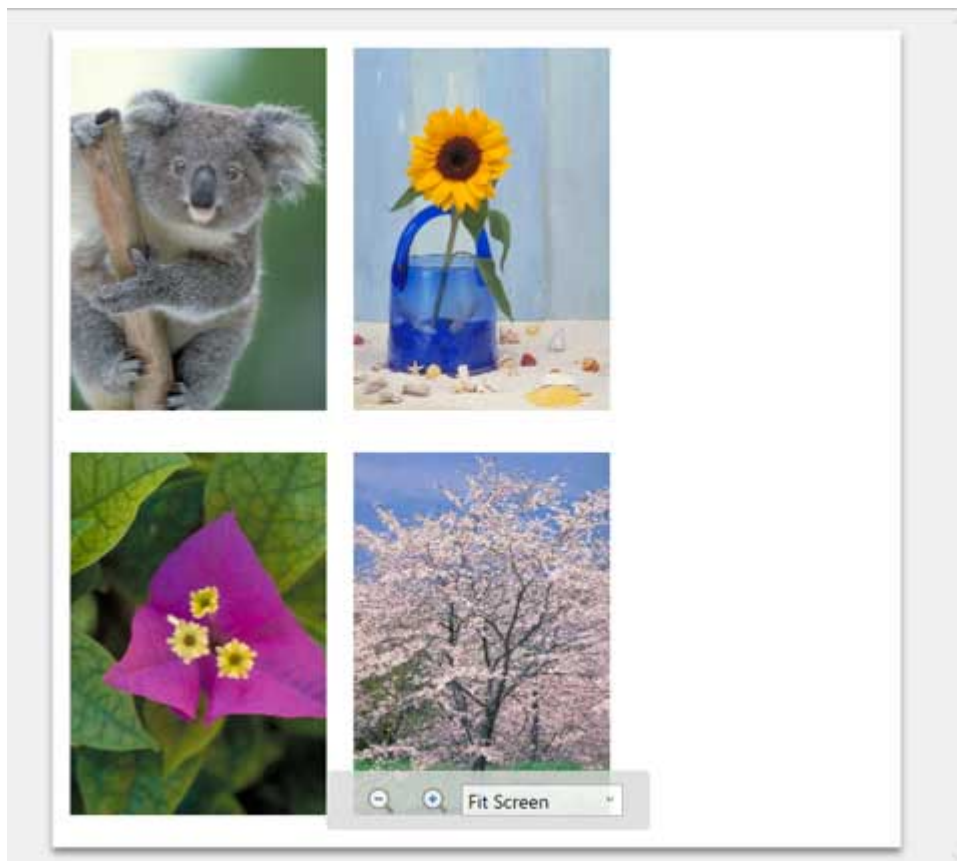
Click **Next** in the edit screen, and then do the print settings.

After setting the various items, click **Print** to start printing.

The Print Settings Screen is divided into two main sections. The left section, titled "Free Layout", displays a 2x2 grid of image thumbnails: a koala, a sunflower in a blue vase, a purple flower, and a cherry blossom tree. Below the thumbnails is a "Fit Screen" button. The right section contains various settings: "Media Type" (Auto (Use Printer Settings)), "Color" (Color), "Print Priority" (Auto (Use Printer Settings)), "Print Quality" (Standard), "Print in vivid colors" (Off), "Paper Source" (Roll Paper), and "Copies" (1). At the bottom, there is a "Favorites" section with an "Add" button, and two large buttons: "Back" and "Print".

Preview Area

Shows a preview of the print results.



Print Settings Area

Do the settings related to printing, such as the type of paper.

Media Type:
Auto (Use Printer Settings) ▾

Color:
Color ▾

Print Priority:
Auto (Use Printer Settings) ▾

Print Quality:
Standard ▾

Print in vivid colors:
Off ▾

Paper Source:
Roll Paper ▾

Copies: 1 ▴ ▾

Favorites: Add

Back Print

Media Type

Set the type of paper to print on.

Color

Set either **Color** or **Monochrome** for the color to print.

Print Priority

Set the elements to specifically emphasize in the print results.

Print Quality

Select the print quality that suits your objectives.

Print in vivid colors

Set whether to print in vivid colors.

Paper Source

Set how the paper is fed.

Copies

Set the number of copies to print.

Favorites

You can register the settings that are currently set in the edit screen and the print settings screen to **Favorites** by clicking **Add**. You can easily call up the settings that are registered in **Favorites** from the **Favorites** sheet on the home screen.

Status Bar

Displays information, such as the number of data that are selected and the paper size.



Paper Size: 609.6 x 507.8 mm

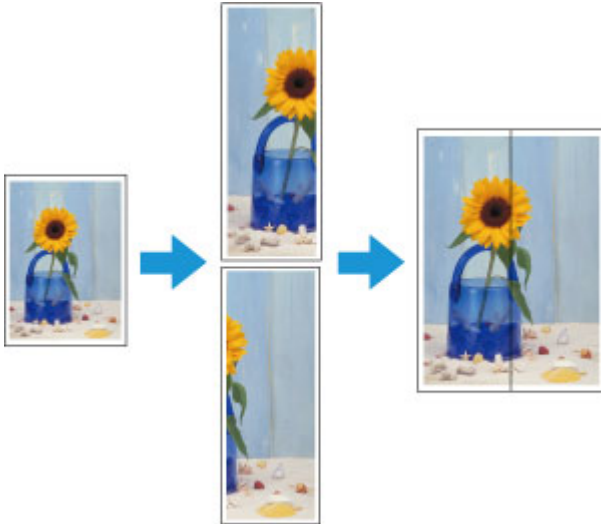
Note

- You can use the **View** menu to show or hide the tool and status bar.

Tiling Mode


Clicking **Tiling** on the home screen opens the Tiling mode.

In the Tiling mode, divide a single page of input data, and then print it. You can align the printouts and glue them together to create a larger printed image.



Menu Bar

This allows you to select menus required for operations.


 Free Layout plus

File Edit View Help

Main Area

In this area, you can select and divide images, and make other print settings.

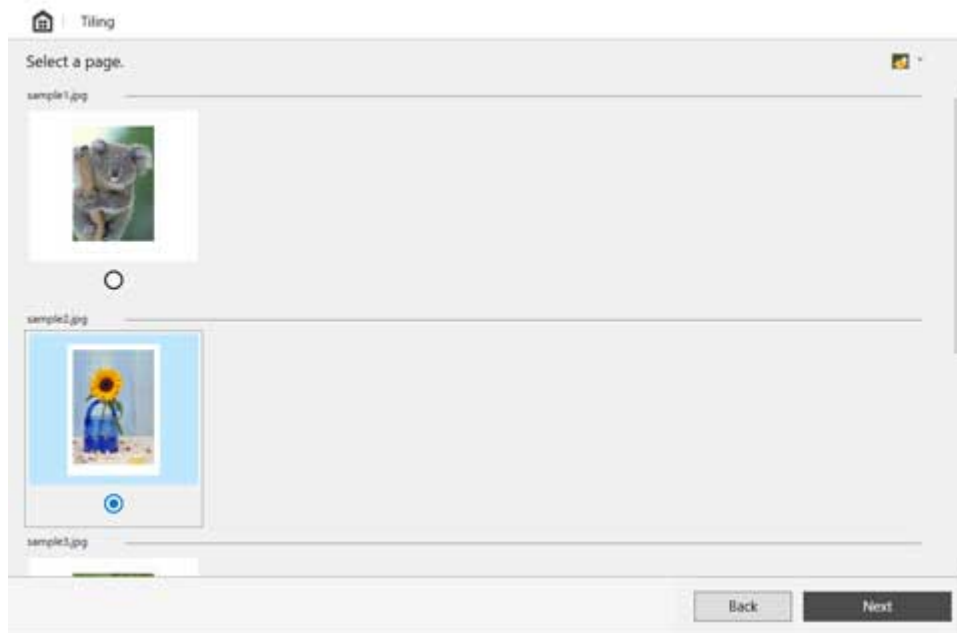
➤➤➤ Note

- Click  in the main area to return to the home screen.

Page Selection Screen

Select the pages to print.

Clicking **Next** closes the selection process and moves you to the edit screen.

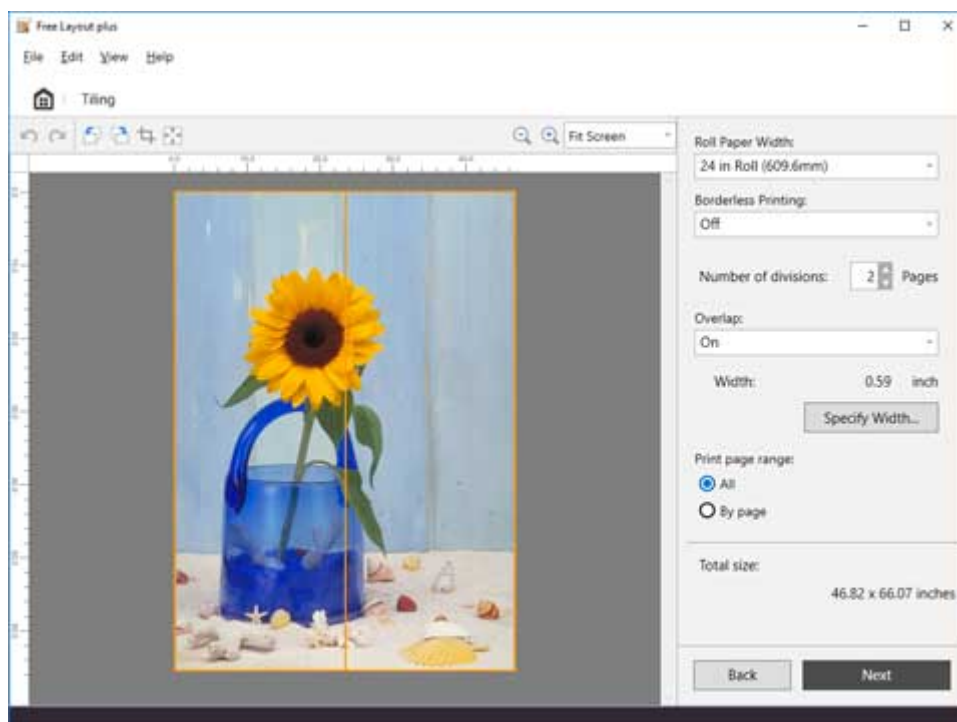


➤➤ Note

- You can change the size of the thumbnails by clicking / / .

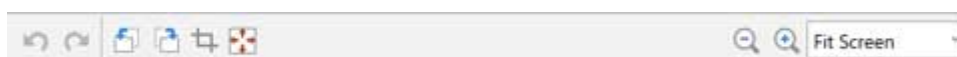
Edit Screen

Set the number of divisions and roll paper width as you check a preview of the print results. Clicking **Next** closes editing and moves you to the print settings screen.



Tool Bar

This allows you to select tool buttons required for major operations.





Undo

Reverses the last edit.

You can also perform **Undo** from the **Edit** menu.



Redo

Restores the last edit.

You can also perform **Redo** from the **Edit** menu.



Rotate Left 90 Degrees

Rotates the selected object 90 degrees to the left.



Rotate Right 90 Degrees

Rotates the selected object 90 degrees to the right.



Crop

Cuts the selected object within any range.

You cannot do other editing operations while cropping.



Erase Margin

Erases the margin of the selected object.



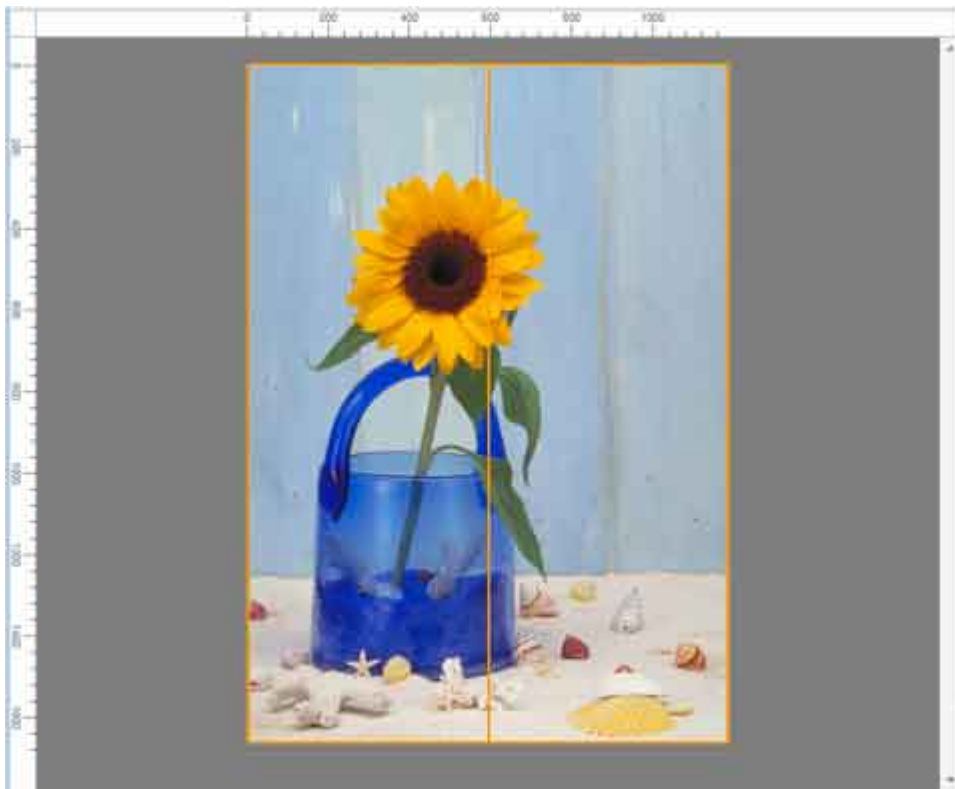
98%

(Enlarge/Reduce View)

Allows you to change the scaling ratio in the preview screen.

Preview Area

Shows an image of the print results pasted together using the current settings.



Edit Settings Area

Set the number of divisions and roll paper width, etc.

Roll Paper Width:
24 in Roll (609.6mm) ▾

Borderless Printing:
Off ▾

Number of divisions: 2 ▴ ▾ Pages

Overlap:
On ▾

Width: 0.59 inch
Specify Width...

Print page range:
☒ All
☐ By page

Total size:
46.82 x 66.07 inches

Back Next

Roll Paper Width

Set the width of the roll paper.

Borderless Printing

Set whether to use borderless printing.

Setting this to **On** expands the print area to both edges and to the leading edge of the paper.

▶▶▶ Note

- By setting **Borderless Printing** to **On**, the overlap is made only on the right side of each page, and the page on the very right side is printed on the full width of the roll paper.
- By selecting **On** in **Borderless Printing**, the image is printed so a white margin does not appear on all four edges of the paper after the printouts are pasted together.

Number of divisions

Set the number of divisions for the objects.

Overlap

Set the overlap for pasting together the images that were divided and printed.

On

Prints using a margin with the width specified in **Specify Width**.

Off

Prints using no margin for the overlap.

Width

Shows the width of the overlap that is set.

Specify Width

Click to show the dialog for specifying the width.

Set the width of the overlap for pasting together the images that were divided and printed.

»»» Note

- If you set a wide **Overlap**, the printed area will be that much smaller, so the size of the printed image after it is pasted together will be smaller.
- A value smaller than 15.00 mm/0.59 inches cannot be set.

Print page range

Select the pages to use for printing.

All

All divided pages are intended for printing.

By page

Divided pages that were clicked on the preview screen are intended for printing.

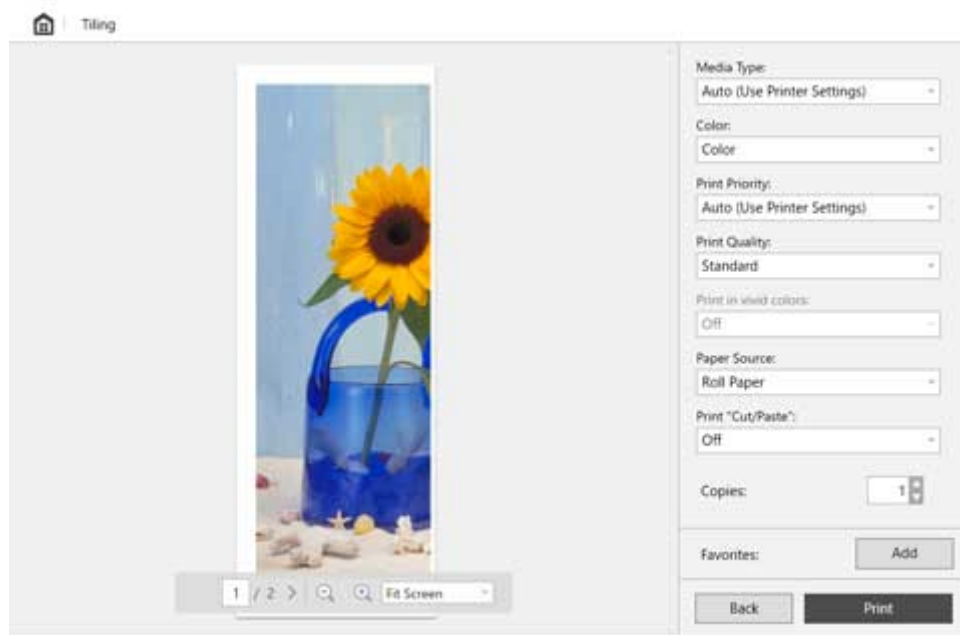
Total size

Shows an approximation of the size after pasting together the images that were divided and printed.

Print Settings Screen

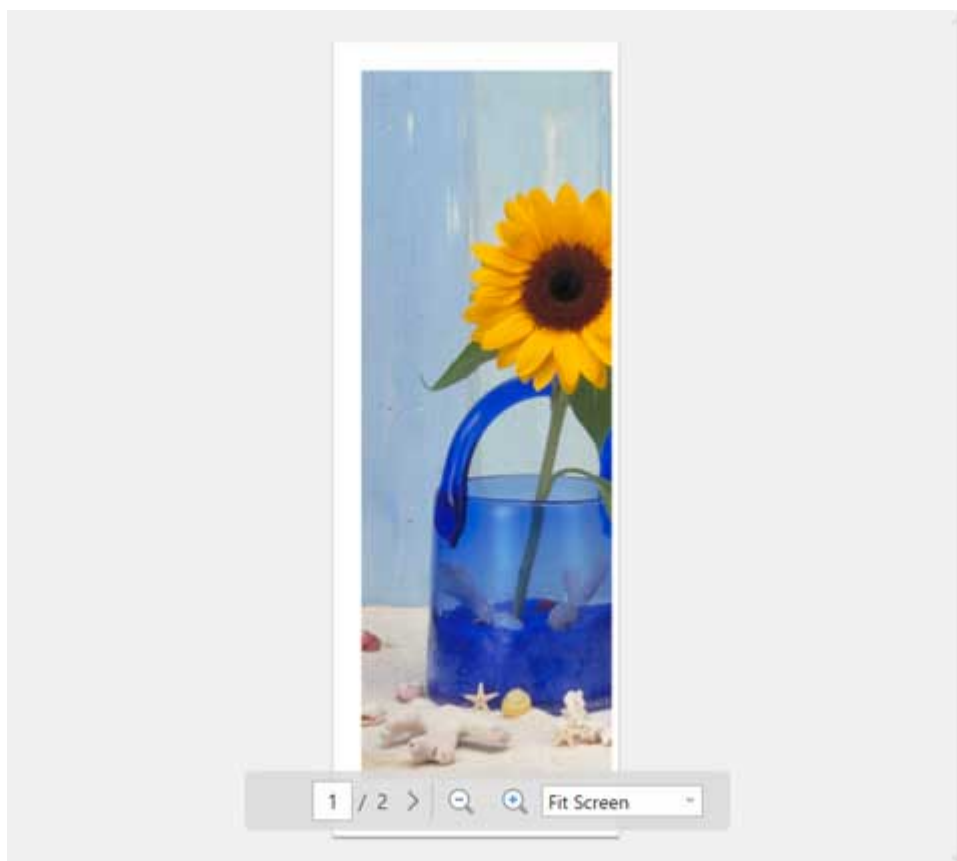
Click **Next** in the edit screen, and then make the print settings.

After setting the required items, click **Print** to start printing.



Preview Area

Shows a preview of the print results for each page.



Print Settings Area

Make the settings related to printing, such as the type of paper.

Media Type:
Auto (Use Printer Settings) ▾

Color:
Color ▾

Print Priority:
Auto (Use Printer Settings) ▾

Print Quality:
Standard ▾

Print in vivid colors:
Off ▾

Paper Source:
Roll Paper ▾

Print "Cut/Paste":
Off ▾

Copies: 1 ▴ ▾

Favorites: Add

Back Print

Media Type

Set the type of paper to print on.

Color

Set either **Color** or **Monochrome** for the color to print.

Print Priority

Set the elements to specifically emphasize in the print results.

Print Quality

Select the print quality that suits your objectives.

Print in vivid colors

Set whether to print in vivid colors.

Paper Source

Set how the paper is fed.

Print "Cut/Paste"

Set whether to print text and guidelines in the cut area and the overlap area.

Copies


Set the number of copies to print.

Favorites

You can register the settings that are currently set in the edit screen and the print settings screen to Favorites by clicking Add. You can easily call up the settings that are registered in Favorites from the Favorites sheet on the home screen.

Status Bar

Displays information, such as the number of data that are selected and the paper size.

A dark horizontal bar with white text on the left side that reads "Paper Size: 609.6 x 1094.3 mm".

Note

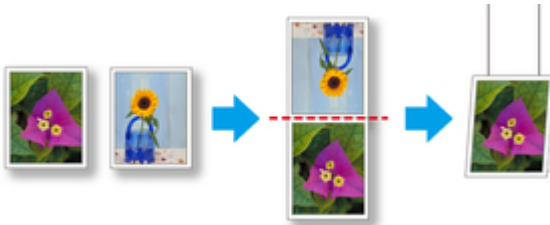
- You can use the **View** menu to show or hide the tool and status bar.

Folded Duplex Mode

Clicking **Folded Duplex** on the home screen opens the Folded Duplex mode.

In the Folded Duplex mode, two pages are printed consecutively. You can create a kind of two-sided printout by folding it down the middle.

This can be used such as for advertising posters that are suspended from the ceiling.



Menu Bar

This allows you to select menus required for operations.


Free Layout plus

File Edit View Help

Main Area

In this area, you can select images and do other print settings.

Note

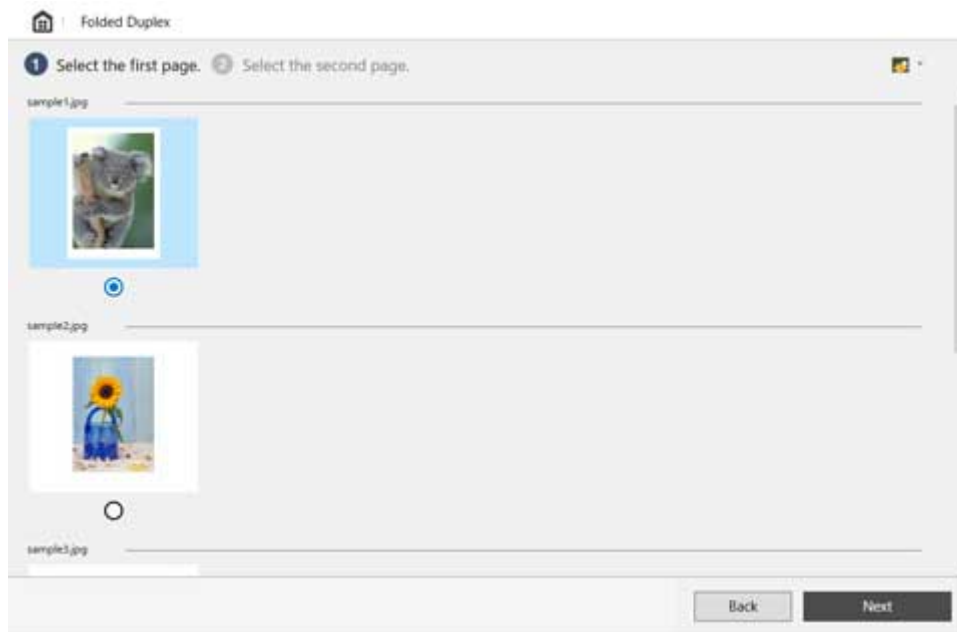
- Click  in the main area to return to the home screen.

Page Selection Screen




Select two pages to print in order, front and then back.

Selecting the page to use as the front, and then clicking **Next**, opens the screen for selecting the page to use for the back.

Selecting the page to use as the back, and then clicking **Next**, opens the edit screen.

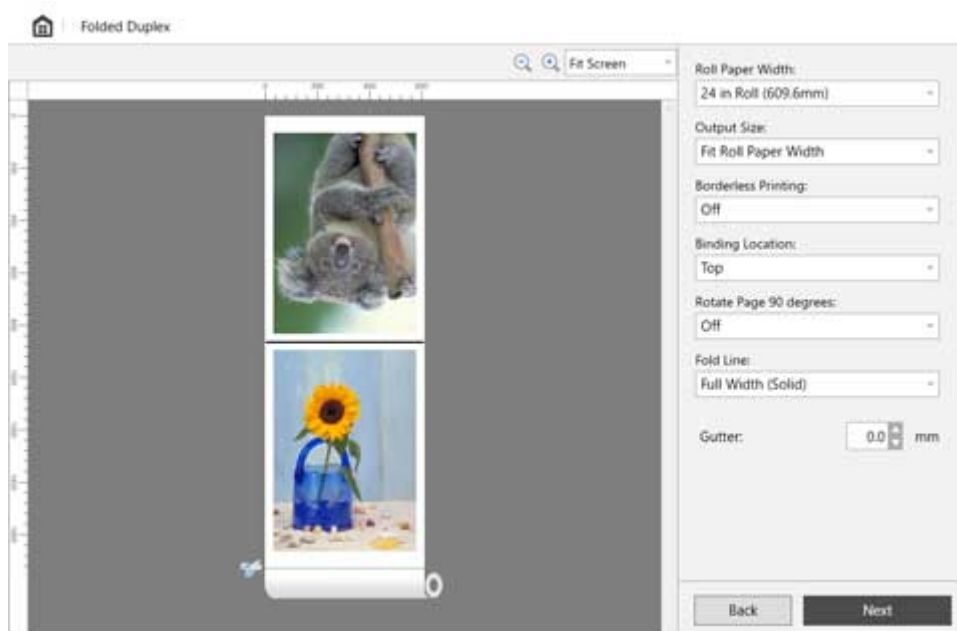


►►► Note

- You can change the size of the thumbnails by clicking  /  / .
- If only one page of input data has been selected on the home screen, then the edit screen opens, not the page selection screen, with the same image selected for both front and back.

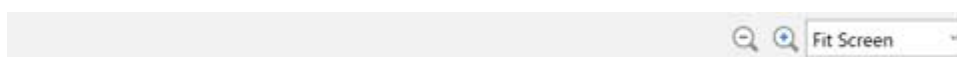
Edit Screen

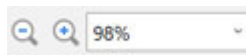
Do settings, such as the roll paper width and output size, as you check a preview of the print results. Clicking **Next** closes editing and moves you to the print settings screen.



Tool Bar

This allows you to select tool buttons required for major operations.



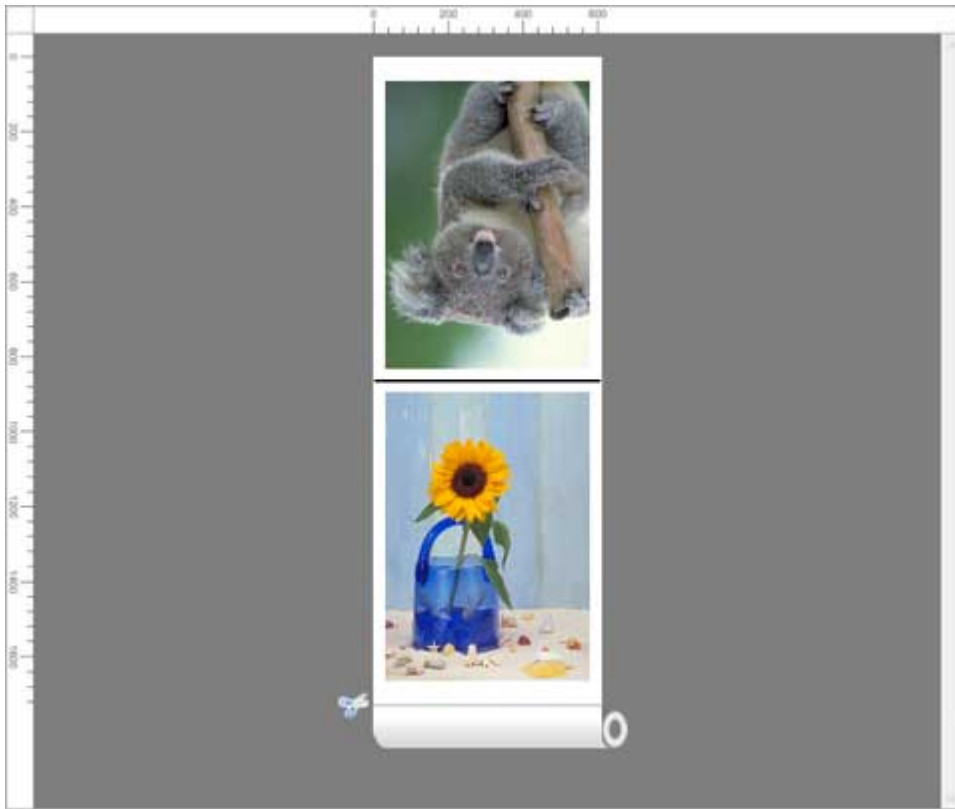


(Enlarge/Reduce View)

Allows you to change the scaling ratio in the preview screen.

Preview Area

Shows a preview of the print results at the current settings.



Edit Settings Area

Set the roll paper width, output size, etc.

Roll Paper Width:
24 in Roll (609.6mm) ▾

Output Size:
Fit Roll Paper Width ▾

Borderless Printing:
Off ▾

Binding Location:
Top ▾

Rotate Page 90 degrees:
Off ▾

Fold Line:
Full Width (Solid) ▾

Gutter: 0.0 mm

Back Next

Roll Paper Width

Set the width of the roll paper.

Output Size

Set the output size.

Borderless Printing

Set whether to do borderless printing.

Setting this to **On** expands the print area to both edges and to the leading edge of the paper.

Binding Location

Set the binding location when the paper is folded.

Rotate Page 90 degrees

Set whether to rotate pages created in portrait orientation 90 degrees and print them in landscape orientation.

Fold Line

Set the type of line to show where to fold the page.

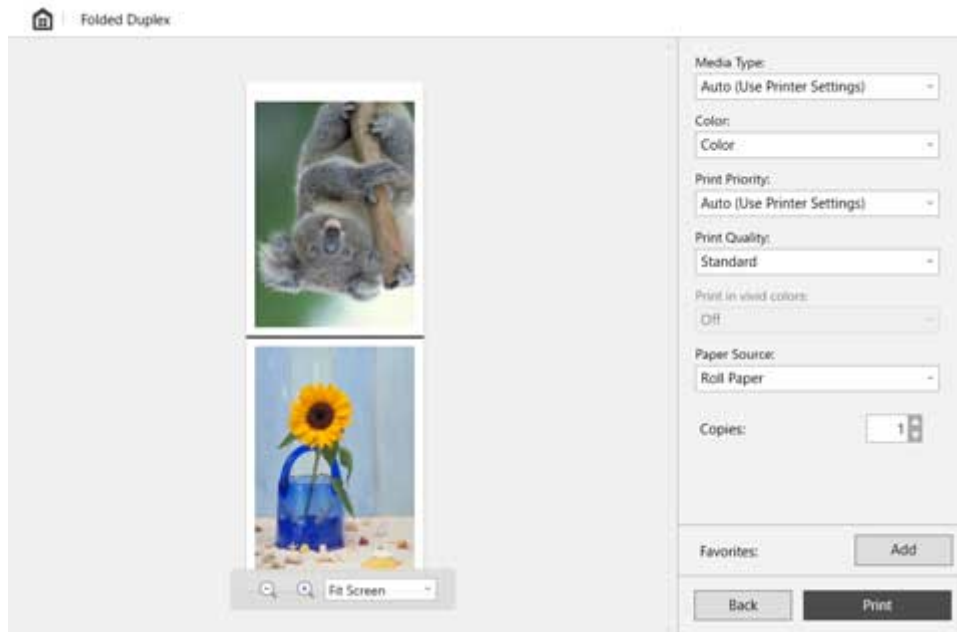
Gutter

Set the margin for the gutter.

Print Settings Screen

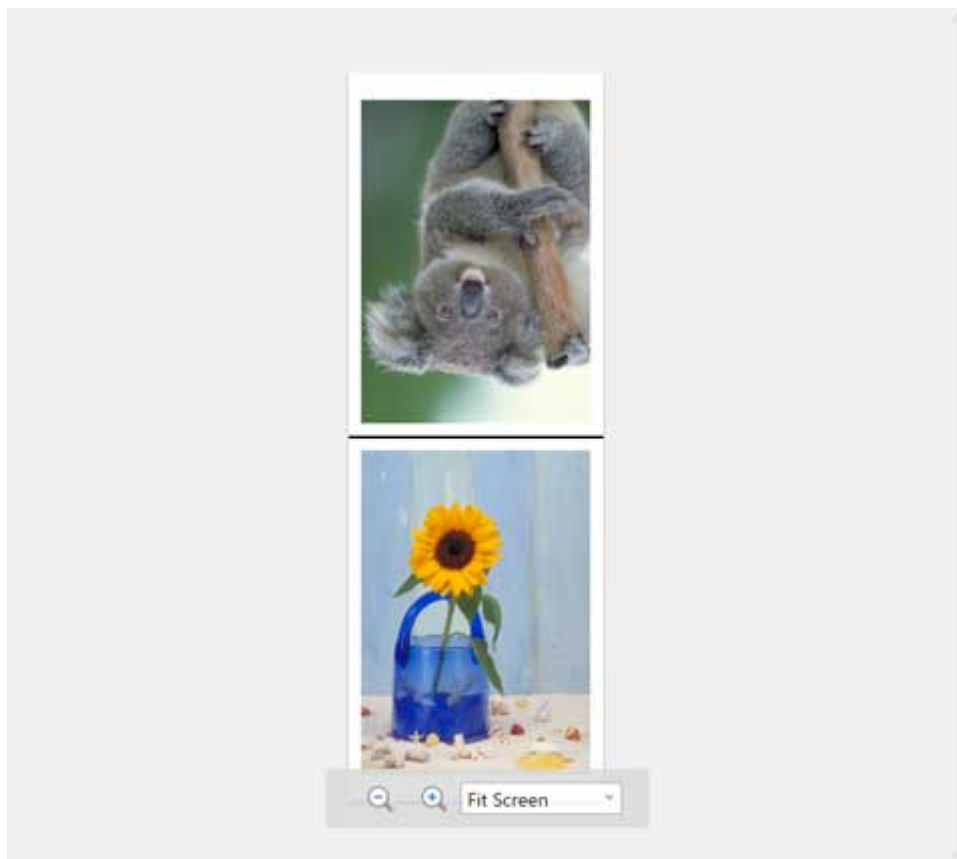
Click **Next** in the edit screen, and then do the print settings.

After setting the various items, click **Print** to start printing.



Preview Area

Shows a preview of the print results.



Print Settings Area

Do the settings related to printing, such as the type of paper.

Media Type:
Auto (Use Printer Settings) ▾

Color:
Color ▾

Print Priority:
Auto (Use Printer Settings) ▾

Print Quality:
Standard ▾

Print in vivid colors:
Off ▾

Paper Source:
Roll Paper ▾

Copies: 1 ▴ ▾

Favorites: Add

Back Print

Media Type

Set the type of paper to print on.

Color

Set either **Color** or **Monochrome** for the color to print.

Print Priority

Set the elements to specifically emphasize in the print results.

Print Quality

Select the print quality that suits your objectives.

Print in vivid colors

Set whether to print in vivid colors.

Paper Source

Set how the paper is fed.

Copies

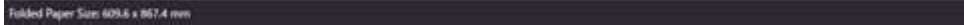
Set the number of copies to print.

Favorites

You can register the settings that are currently set in the edit screen and the print settings screen to Favorites by clicking Add. You can easily call up the settings that are registered in Favorites from the Favorites sheet on the home screen.

Status Bar

Displays information, such as the number of data that are selected and the paper size.

A dark gray horizontal bar with the text "Folded Paper Size: 609.6 x 967.4 mm" in white.

Note

- You can use the **View** menu to show or hide the tool and status bar.

Favorites

You can register a combination of a printer to use, an edit mode, and settings in the edit mode, and save it to **Favorites**.

By registering combinations that you frequently use, you can eliminate the task of having to set them each time.

Add to Favorites Dialog

To open the **Add to Favorites** dialog, click **Add in Favorites** on the print settings screen for any of the edit modes.

Click **OK** to register the settings that are displayed to favorites.

Add to Favorites

Name: Fixed Layout01

Printer: Canon F60-200

Edit mode: Fixed Layout

Page Settings

Roll Paper Width: 24 in Roll (609.6mm) Erase Margin: Off

Borderless Printing: Off

Enlarge/Reduce: Match Page Size

Align Center: Off

Print Settings

Media Type: Auto (Use Printer Settings) Print in vivid colors: Off

Color: Color Paper Source: Roll Paper

Print Priority: Auto (Use Printer Settings)

Print Quality: Standard

OK Cancel

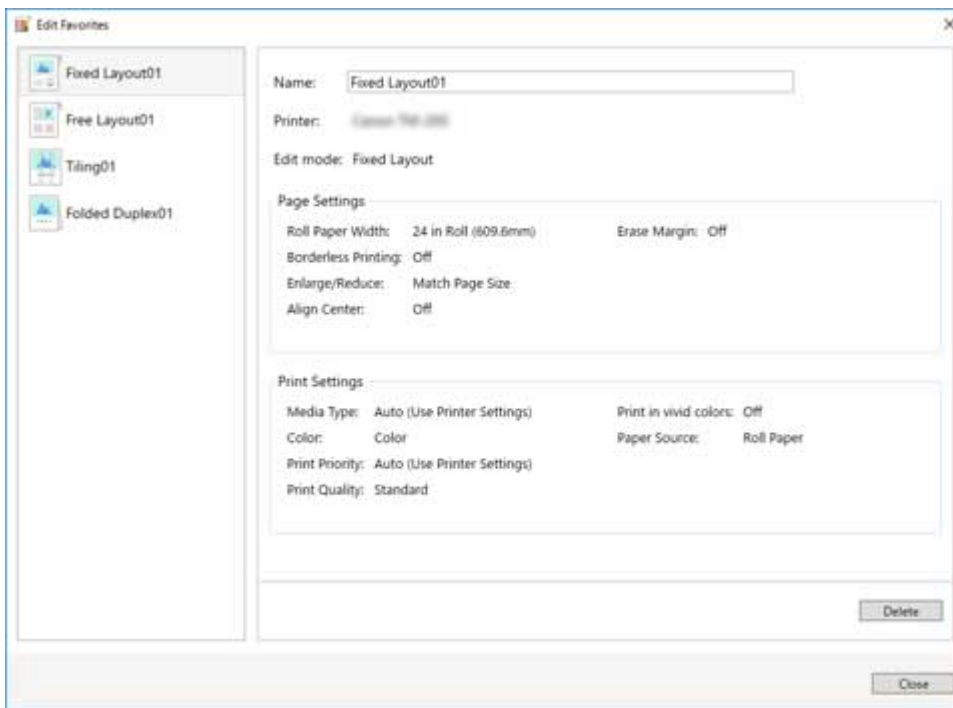
Note

- In the **Add to Favorites** dialog, you can only edit the **Name**. If you want to change the registered settings, click **Cancel** to return to the edit mode. After you change the settings in the edit screen and the print settings screen, open the **Add to Favorites** dialog again.

Edit Favorites Dialog

To open the **Edit Favorites** dialog, click **Edit Favorites** on the **Favorites** sheet on the home screen.

In the **Edit Favorites** dialog, you can confirm settings in **Favorites** that have been registered, change the **Name**, and delete **Favorites**.



Favorites List

The favorite names registered in **Name** appear in the list.



Settings display area

Shows the settings for the favorite that is selected in the list of favorites.

You can also edit the content of **Name**.

Name:

Printer:

Edit mode: Fixed Layout

Page Settings

Roll Paper Width:	24 in Roll (609.6mm)	Erase Margin:	Off
Borderless Printing:	Off		
Enlarge/Reduce:	Match Page Size		
Align Center:	Off		

Print Settings

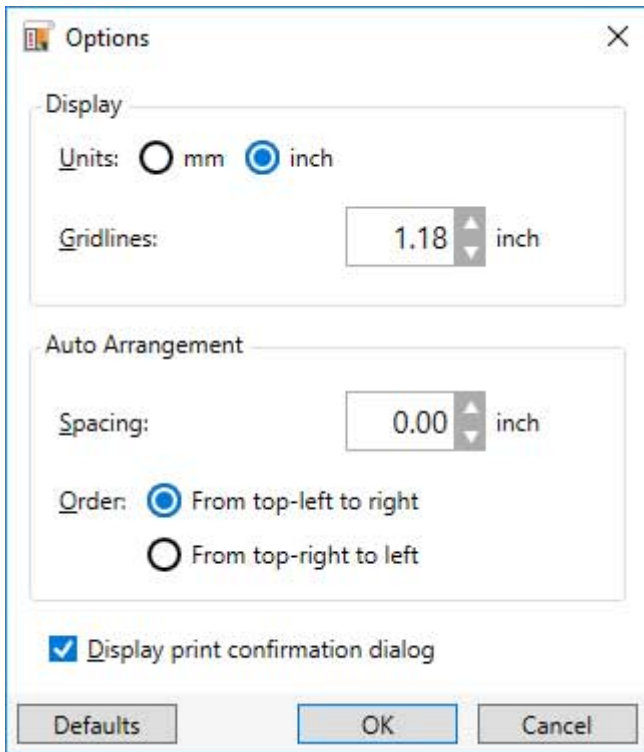
Media Type:	Auto (Use Printer Settings)	Print in vivid colors:	Off
Color:	Color	Paper Source:	Roll Paper
Print Priority:	Auto (Use Printer Settings)		
Print Quality:	Standard		

Delete

Clicking this deletes the favorite that is selected in the list of favorites.

Options Dialog

To open the **Options** dialog, click **Options** from the **File** menu on the menu bar.



Display

Set the items related to the **Free Layout plus** display.

Units

Set the unit for length that you use.

Gridlines

Set the distance between lines in the grid.

You can set a distance from 10.0 mm/0.39 inches to 200.0 mm/7.87 inches.

Auto Arrangement

Set the items related to auto arrangement.

Spacing

Set the spacing between objects when objects are automatically arranged.

You can set a distance from 0.0 mm/0.00 inches to 100.0 mm/3.94 inches.

Order

Set the direction for auto arrangement.

Display print confirmation dialog

Select this to display a print confirmation dialog when **Print** is clicked in the print settings screen.

Defaults

Returns the settings in the **Options** dialog to their default values.

Canon Free Layout plus Ribbon (Office Plug-in)

The **Canon Free Layout plus** ribbon can be used by starting an application that supports Microsoft Office plugins on a computer in which **Free Layout plus** is installed.

Important

- If the **Canon Free Layout plus** ribbon is not displayed, refer to "[Canon Free Layout plus Ribbon Is Not Displayed](#)".

Note

- The following explanation uses the screens that are displayed when you use Microsoft Word.



Edit/Print

Edit/Print

Free Layout plus starts.

The data you edited in the Office application appears in the **Input Data List** on the home screen.

(See "[Free Layout plus Home Screen](#).")

Print Range

Set the range of data that is input to **Free Layout plus** when **Edit/Print** is clicked.

Large-format settings

Banner

Set paper sizes that are suitable for long documents, such as banners. (See "[Printing Curtains/Banners](#).")

Curtain

Set paper sizes that are suitable for long documents, such as curtains. (See "[Printing Curtains/Banners](#).")

Note

- **Large-format settings** does not appear in Microsoft Excel.

Other

Help

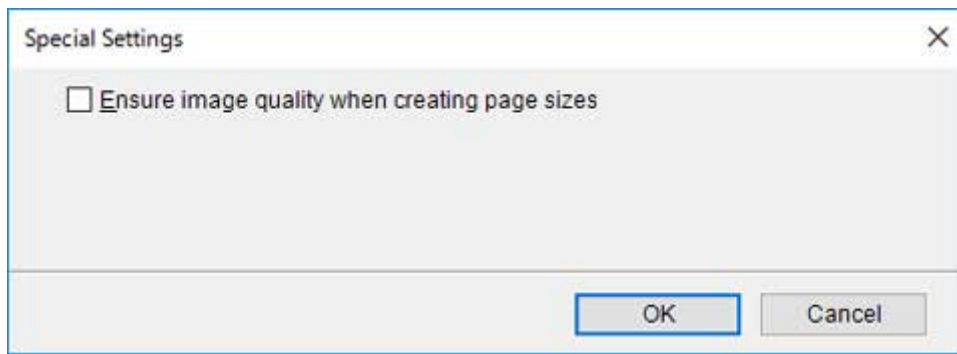
Opens Help.

About

Displays the version of **Free Layout plus**.

Special Settings

Displays the **Special Settings** dialog.



Ensure image quality when creating page sizes

Select this to create documents at the maximum size. When printing, the scale ratio is low so the degradation in quality of images, such as photos, is minimized.

Various Free Layout plus Features

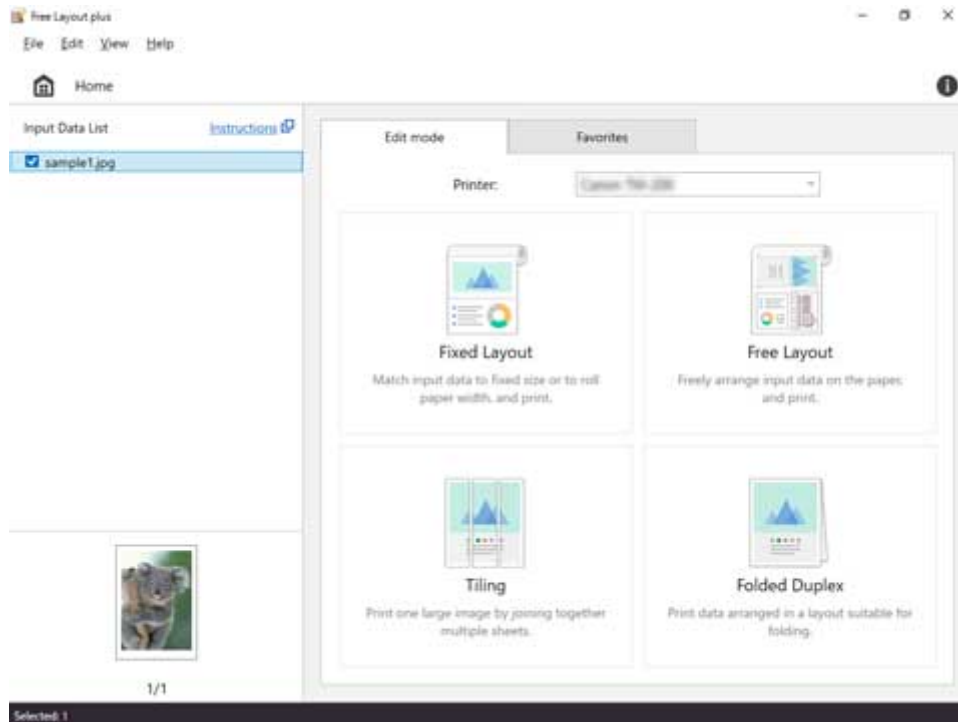
- **Inputting Multiple-file Documents into Free Layout plus**
- **Inputting Documents Created Using Multiple Applications into Free Layout plus**
- **Correctly Laying Out and Printing Objects**
- **Laying Out and Printing Objects as You Like**
 - Selecting an Object
 - Changing the Object Size
 - Moving an Object
 - Rotating an Object
 - Laying out Objects Automatically
 - Aligning Objects
 - Changing the Object Overlapping Order
 - Pasting a Copied or Cut Object
- **Dividing and Printing Objects**
- **Printing as Folded Duplex**
- **Printing Curtains/Banners**

Inputting Multiple-file Documents into Free Layout plus

Input multiple-file documents and then manipulate them in **Free Layout plus**.

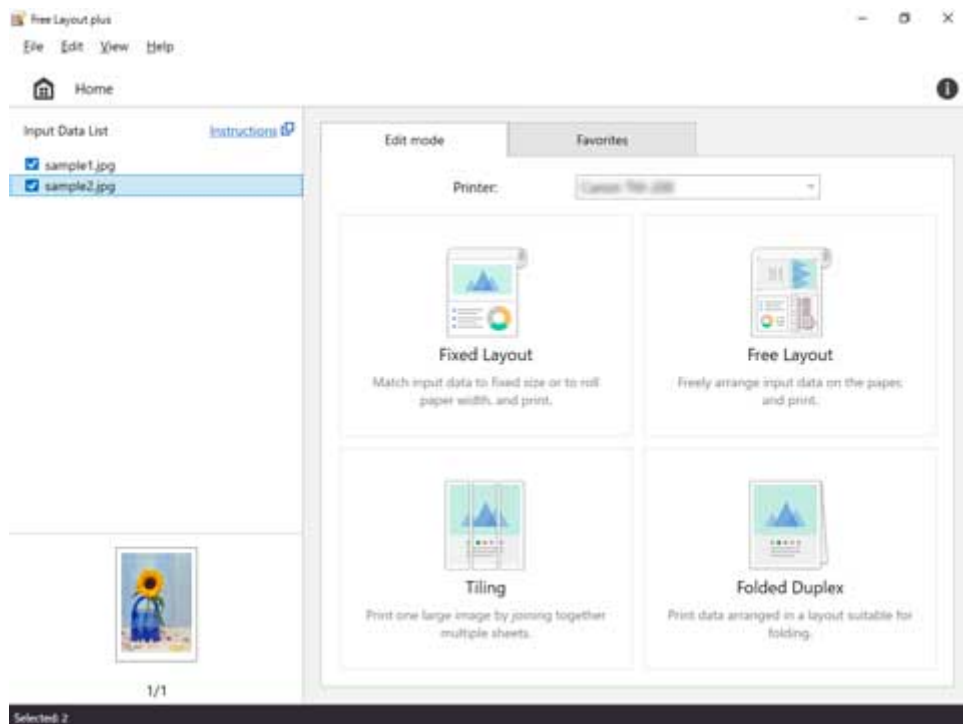
1. Open the file you want to print, and then start **Free Layout plus** by using one of the procedures in "[Starting Free Layout plus and Inputting Data.](#)"

Free Layout plus starts and the file that is opened is displayed in **Input Data List**.



2. While **Free Layout plus** is running, open a separate file that you want to print, and then execute one of the procedures in "[Starting Free Layout plus and Inputting Data.](#)"

The data opened in step 2 is added to the **Input Data List** in **Free Layout plus**.



3. Repeat step 2 until all the data you want to print appears in **Input Data List**.

4. Lay out and print data using various **Free Layout plus** features.

For details, see the following.

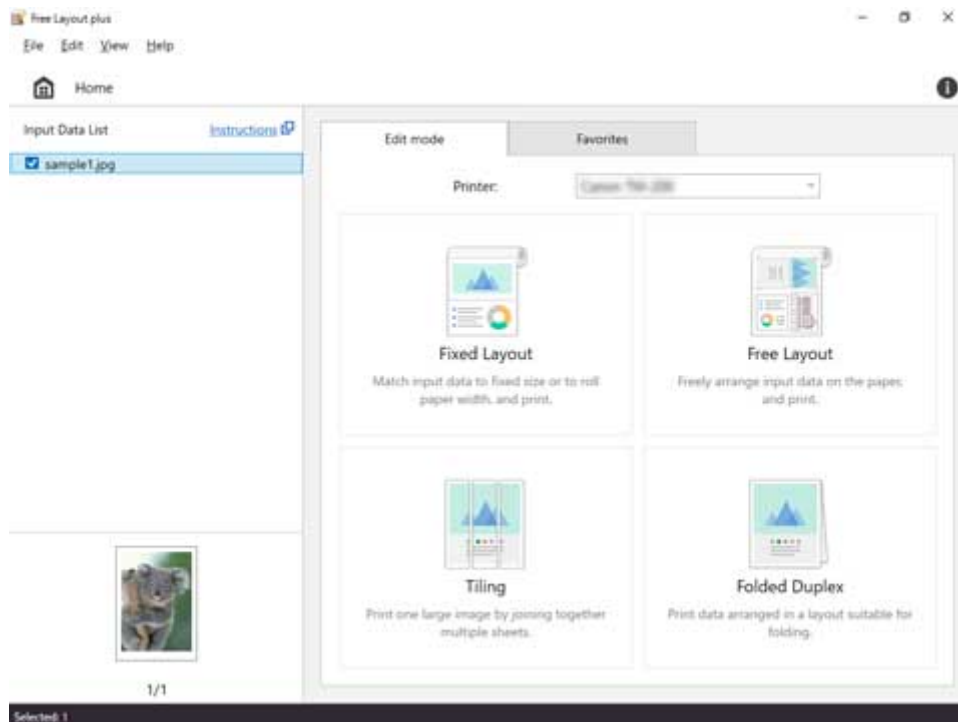
- ➡ [Correctly Laying Out and Printing Objects](#)
- ➡ [Laying Out and Printing Objects as You Like](#)
- ➡ [Dividing and Printing Objects](#)
- ➡ [Printing as Folded Duplex](#)
- ➡ [Printing Curtains/Banners](#)

Inputting Documents Created Using Multiple Applications into Free Layout plus

Input documents created using multiple applications into **Free Layout plus**, and then manipulate them.

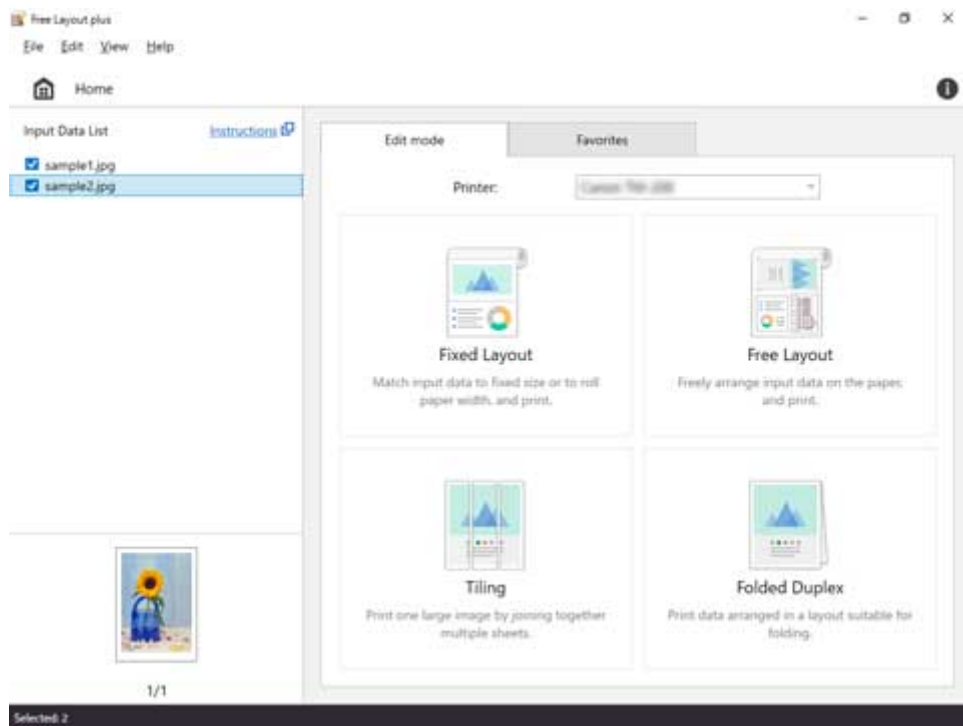
1. Open the file you want to print, and then start **Free Layout plus** by using one of the procedures in "[Starting Free Layout plus and Inputting Data.](#)"

Free Layout plus starts and the file that is opened is displayed in **Input Data List**.



2. While **Free Layout plus** is running, open a file from a separate application that you want to print, and then execute one of the procedures in "[Starting Free Layout plus and Inputting Data.](#)"

The data opened in step 2 is added to the **Input Data List** in **Free Layout plus**.



3. Repeat step 2 until all the data you want to print appears in **Input Data List**.

4. Lay out and print data using various **Free Layout plus** features.

For details, see the following.

- ➡ [Correctly Laying Out and Printing Objects](#)
- ➡ [Laying Out and Printing Objects as You Like](#)
- ➡ [Dividing and Printing Objects](#)
- ➡ [Printing as Folded Duplex](#)
- ➡ [Printing Curtains/Banners](#)

Correctly Laying Out and Printing Objects

Lay out multiple pages in order, and then print them.

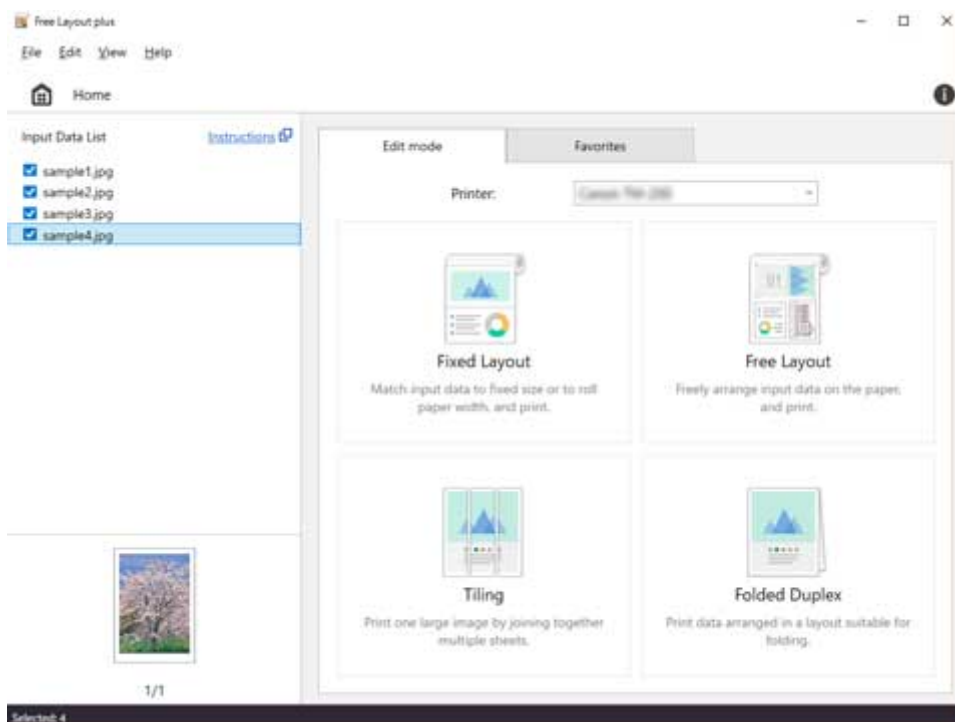
1. Open the file you want to print, and then start **Free Layout plus**.

For details about starting procedures, see "[Starting Free Layout plus and Inputting Data.](#)"

►► Note

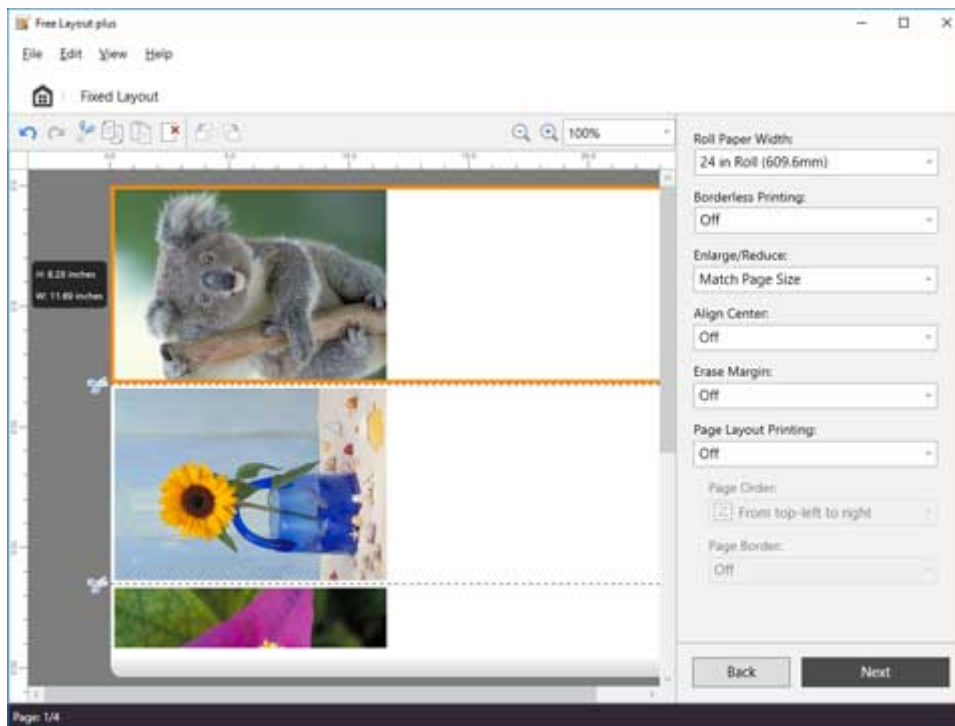
- If you want to layout multiple images in different files, while **Free Layout plus** is running, open the data you want to add, and repeat the operation in step 1.

2. Click **Fixed Layout**.



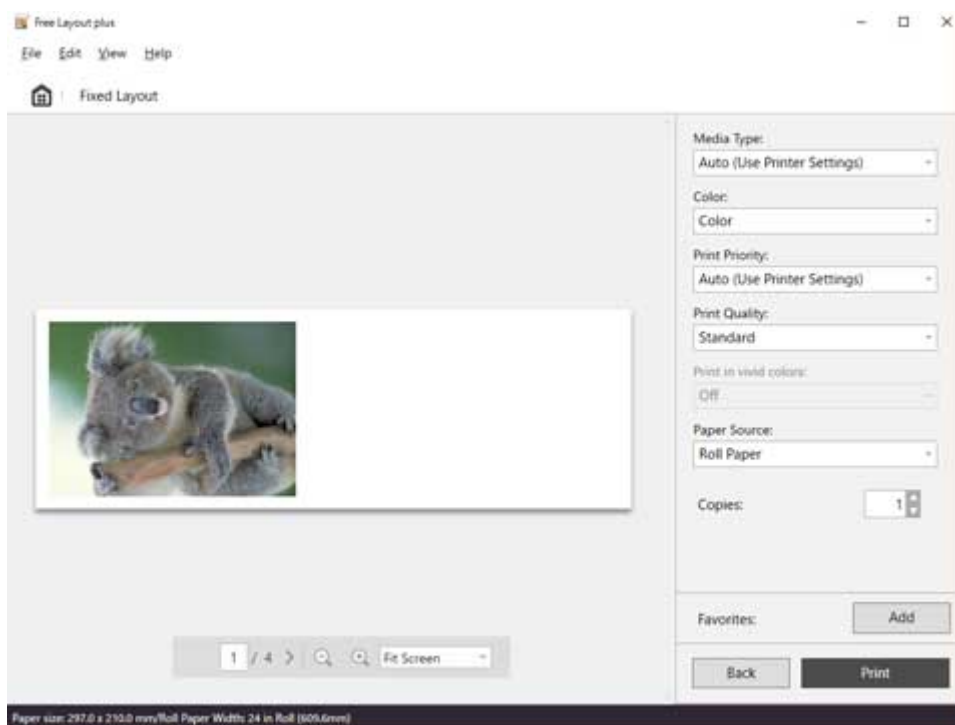
The edit screen in the Fixed Layout mode is displayed.

3. Set the order of the images to print, **Roll Paper Width**, and other settings, and then click **Next**.



For details about how to do settings in the edit screen, see "[Edit Screen](#)" in "Fixed Layout Mode."
The print settings screen in the Fixed Layout mode is displayed.

4. After setting the items related to printing, click **Print.**



For details about how to do settings in the print settings screen, see "[Print Settings Screen](#)" in "Fixed Layout Mode."

Printing starts.

Laying Out and Printing Objects as You Like

Lay out multiple pages as you like, and then print them.

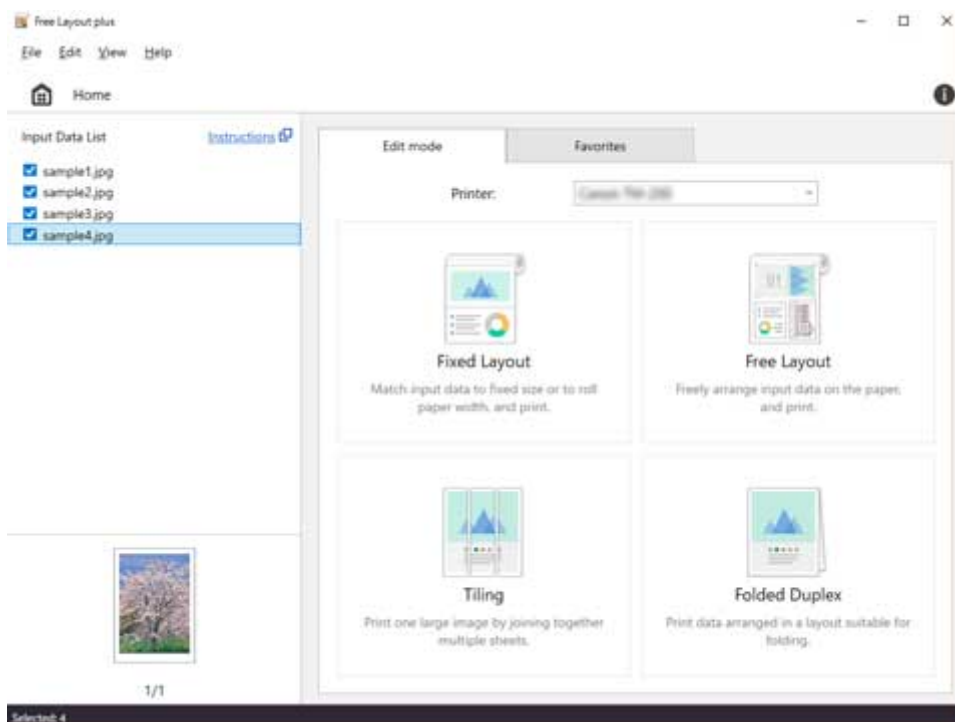
1. Open the file you want to print, and then start **Free Layout plus**.

For details about starting procedures, see "[Starting Free Layout plus and Inputting Data.](#)"

▶▶▶ Note

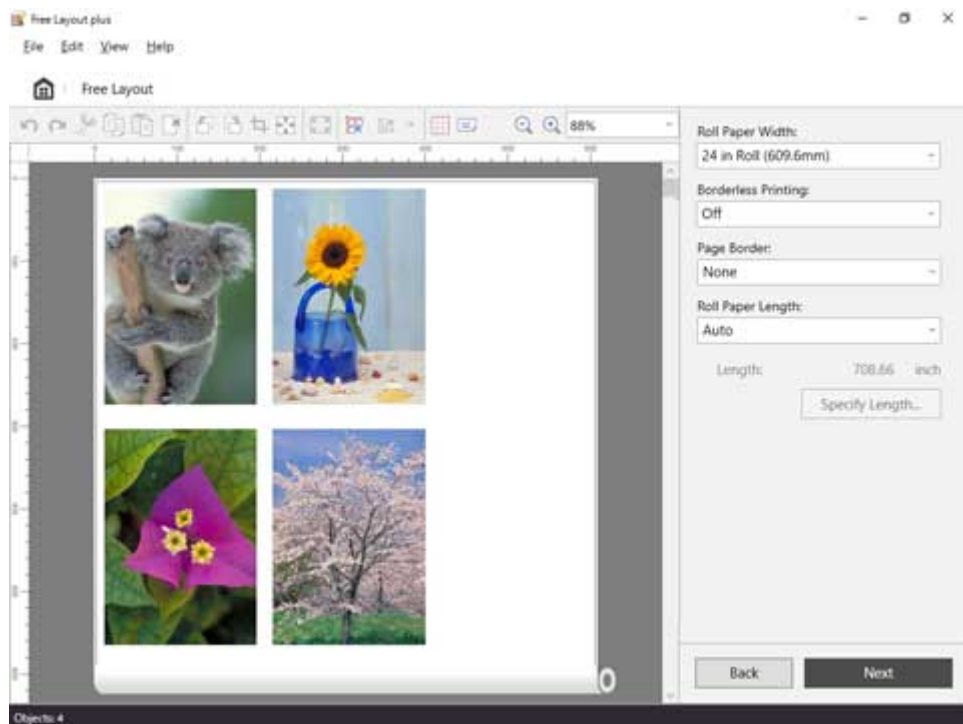
- If you want to layout multiple images in different files, while **Free Layout plus** is running, open the data you want to add, and repeat the operation in step 1.

2. Click **Free Layout**.



The edit screen in the Free Layout mode is displayed.

3. Set the layout of the images to print, **Roll Paper Width**, and other settings, and then click **Next**.

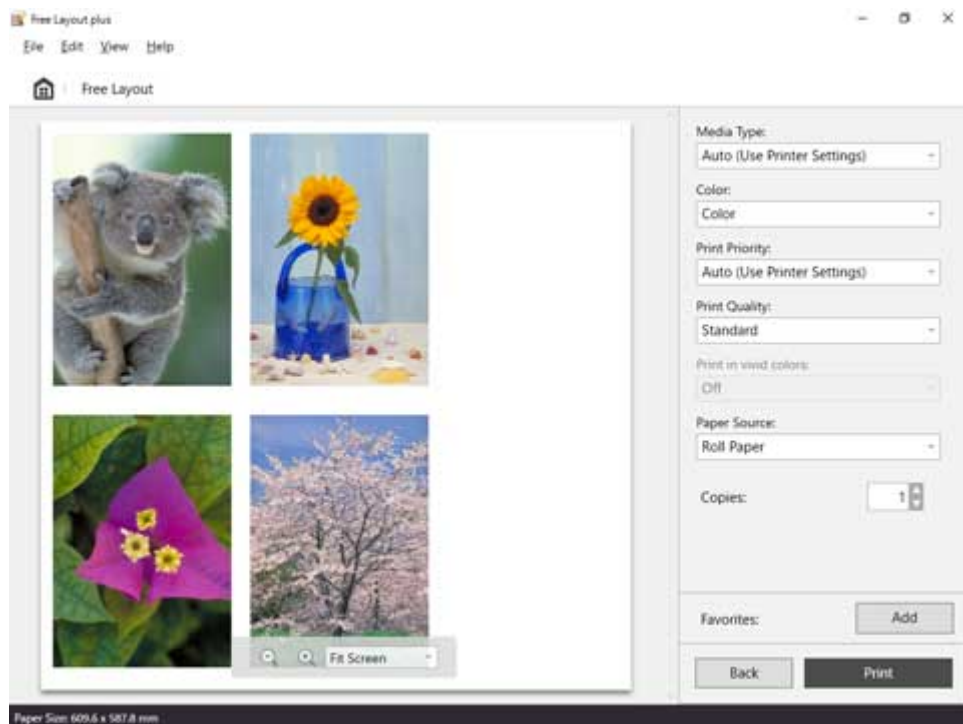


For details about how to do settings in the edit screen, see "[Edit Screen](#)" in "Free Layout Mode."
 For details about operations for objects in the preview, see the following.

- ➡ [Selecting an Object](#)
- ➡ [Changing the Object Size](#)
- ➡ [Moving an Object](#)
- ➡ [Rotating an Object](#)
- ➡ [Laying out Objects Automatically](#)
- ➡ [Aligning Objects](#)
- ➡ [Changing the Object Overlapping Order](#)
- ➡ [Pasting a Copied or Cut Object](#)

The print settings screen in the Free Layout mode is displayed.

4. After setting the items related to printing, click **Print**.



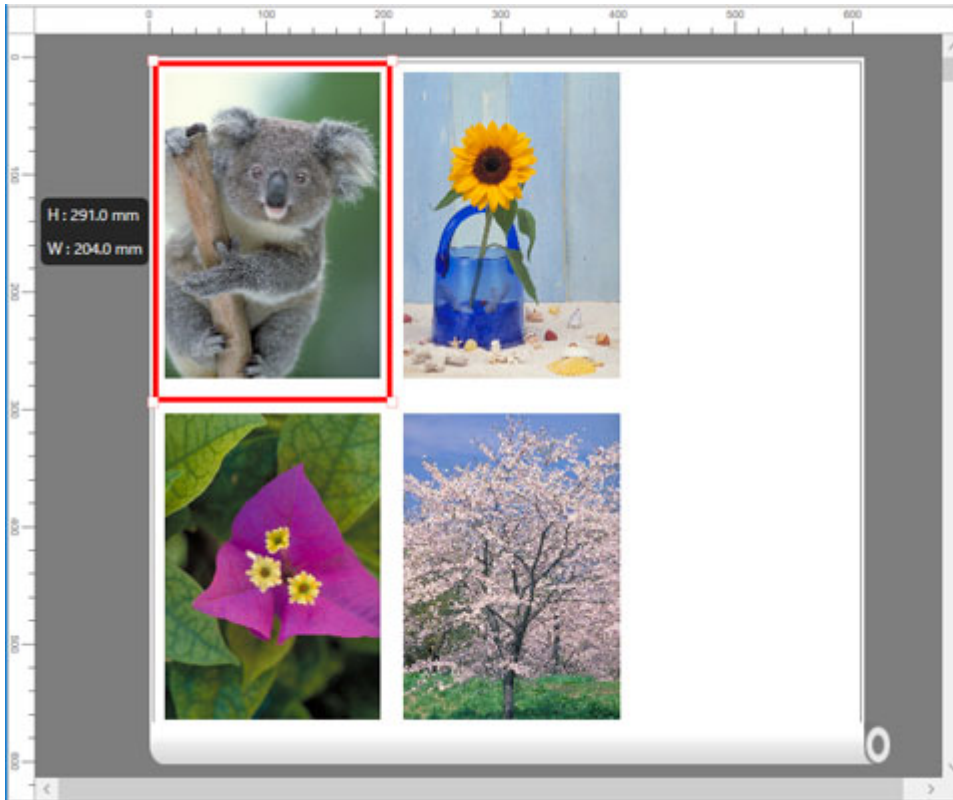
For details about how to do settings in the print settings screen, see "[Print Settings Screen](#)" in "Free Layout Mode."

Printing starts.

Selecting an Object

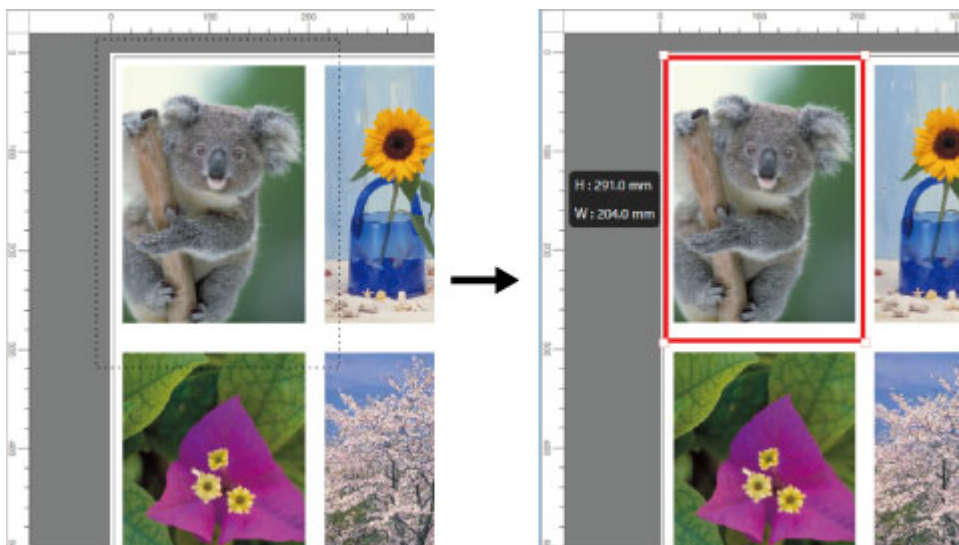
To select an object, click that object.

When an object is selected, a select box (red border) appears around the object, and the height and width of the object are shown on the left side.



To select multiple objects, perform the following.

- To select multiple successive objects, click them while holding down the Shift key.
- To select multiple arbitrary objects, click them while holding down the Ctrl key.
- To select all objects, select **Select All** from the **Edit** menu.
- When you specify the area with dragging the mouse, the object in the area is selected.



Changing the Object Size

You can change the size of the selected object.

►►► Note

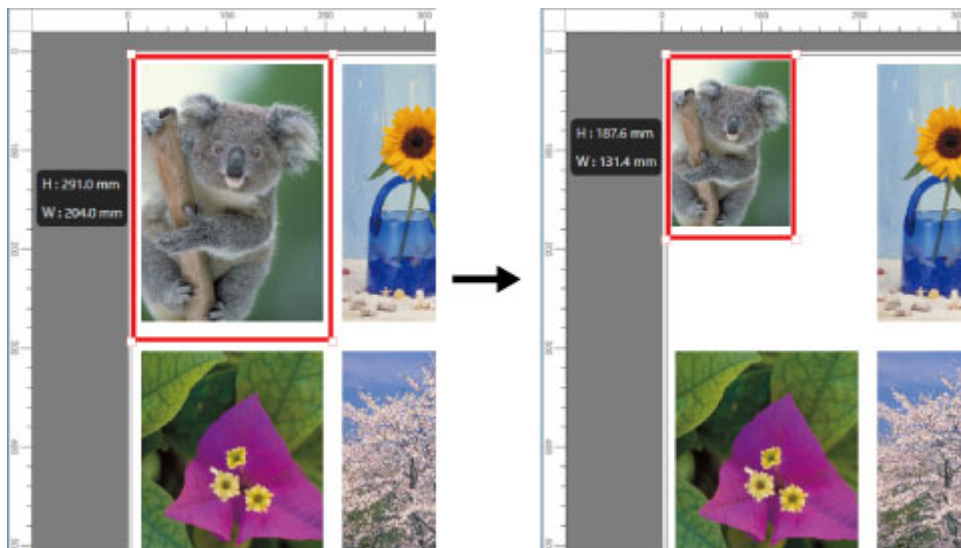
- The vertical-to-horizontal ratio remains unchanged when the object is enlarged or reduced.

1. Select an object.


(See "[Selecting an Object.](#)")

2. Change object size.

Place the pointer at a corner of the selection box around the object to show the arrow handle, and drag this handle to change the object size.



►►► Note

- You can also fit the size of the object to the width of the roll paper by clicking  **Fit** on the tool bar.

Moving an Object

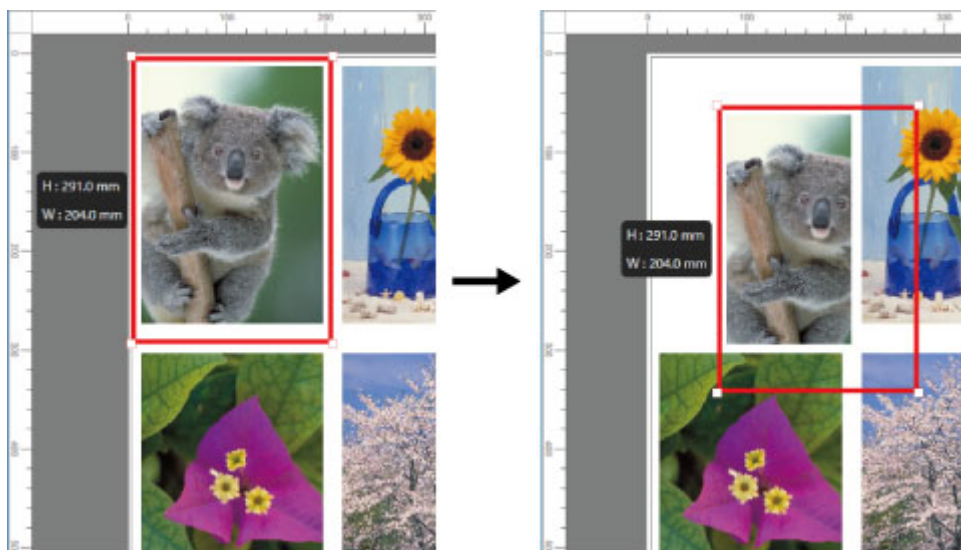
You can move the position of the selected object.

1. Select an object.

(See "[Selecting an Object.](#)")

2. Moving an Object.

Place the pointer inside the selection box of the object to show the crosshair handle, and drag it to move the object.



Rotating an Object

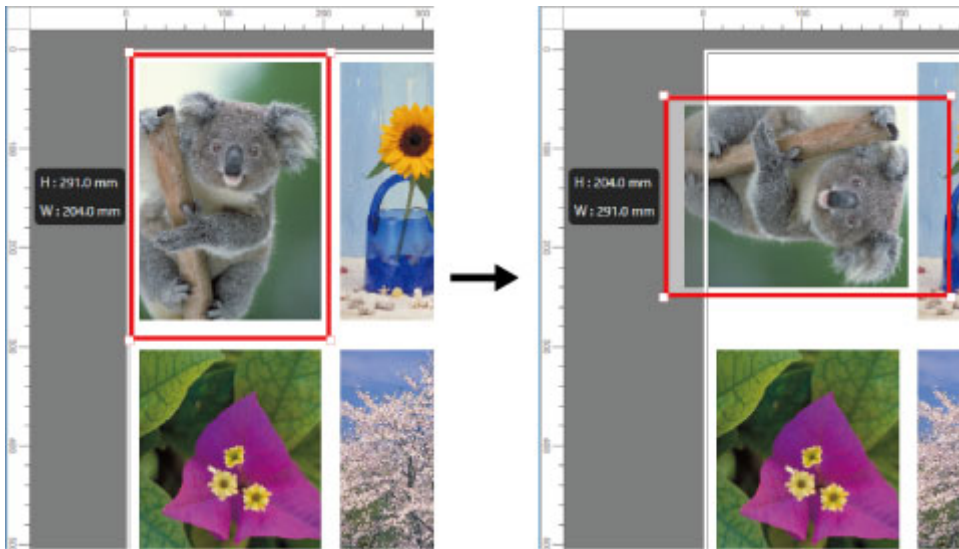
You can rotate the selected object.

1. Select an object.

(See "[Selecting an Object.](#)")

2. Select rotation direction.

Select  **Rotate Left 90 Degrees** or  **Rotate Right 90 Degrees** from the toolbar.



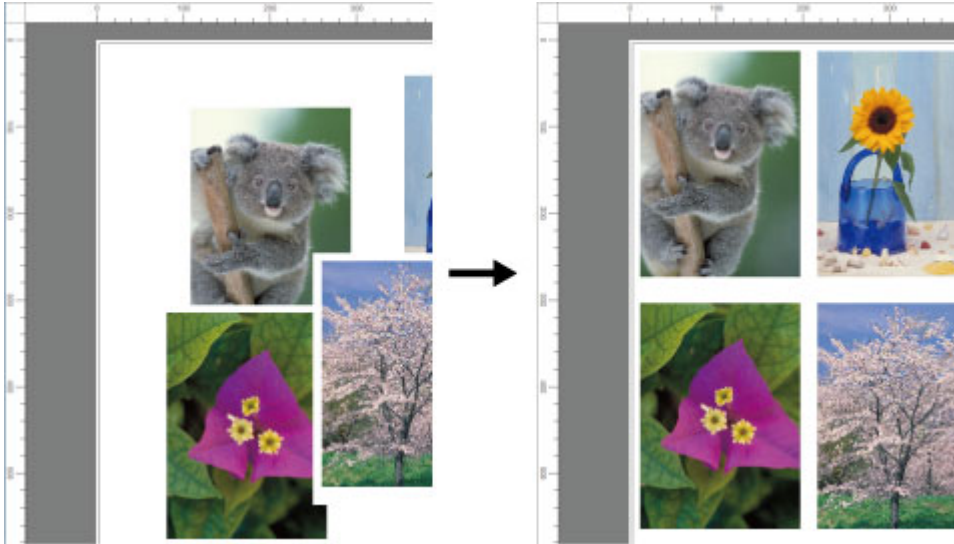
►► Note

- You can also rotate an object by right-clicking the mouse on the object, and then selecting **Rotate Left 90 Degrees** or **Rotate Right 90 Degrees**.

Laying out Objects Automatically

Click  **Auto Arrange Object** from the toolbar.

Automatically positions the object.



►► Note

- The object layout order varies depending on the **Auto Arrangement** setting in the [Options Dialog](#).

Aligning Objects

You can align objects systematically.

1. Select multiple objects.

Select multiple objects to align. (See "[Selecting an Object.](#)")

2. Click  **Align** from the toolbar.

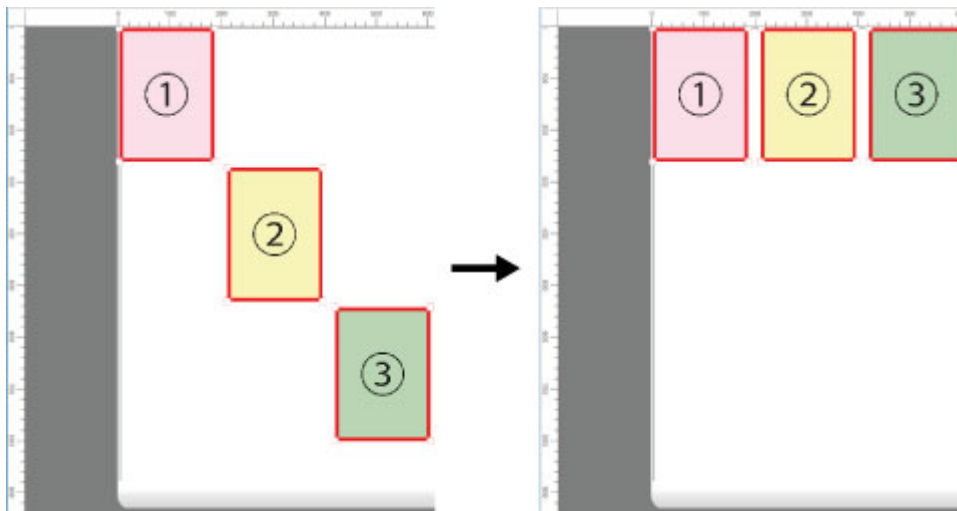
An icon appears indicating the alignment method.

3. Click the icon that indicates the alignment method.



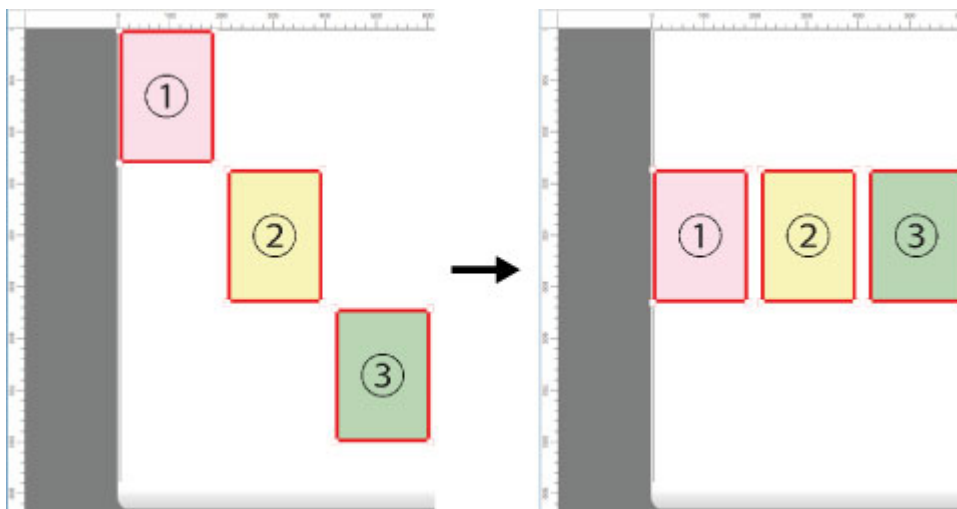
Align Top

Lays out the objects, justifying them to the top.



Center Vertically

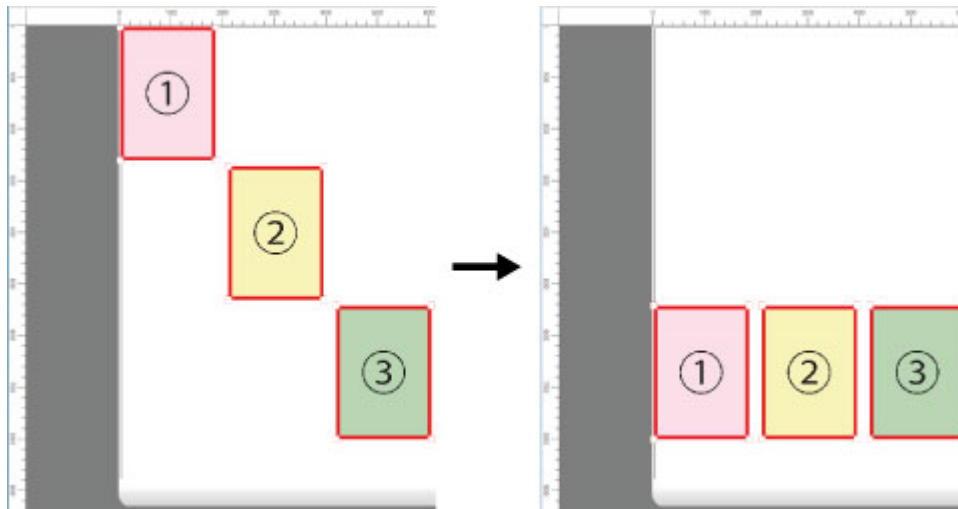
Lays out the objects, justifying them to the vertical center.





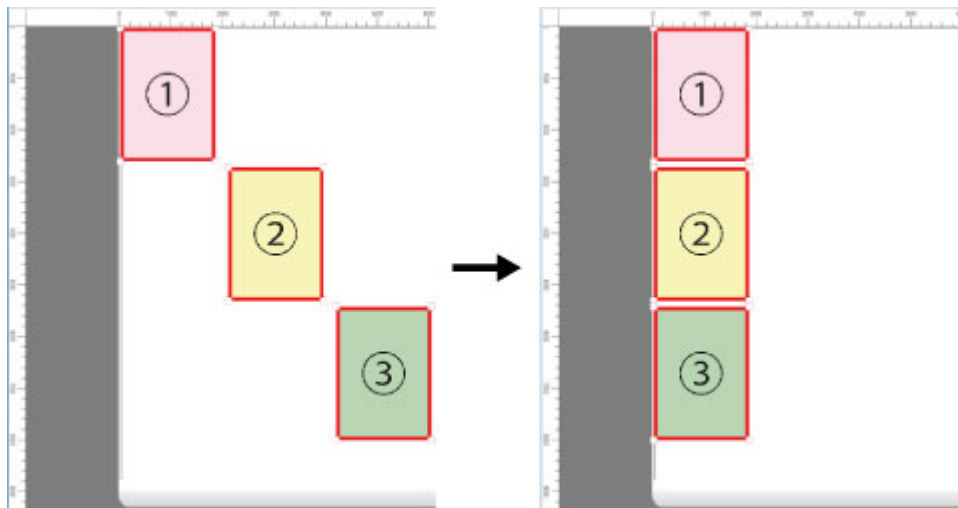
Align Bottom

Lays out the objects, justifying them to the bottom.



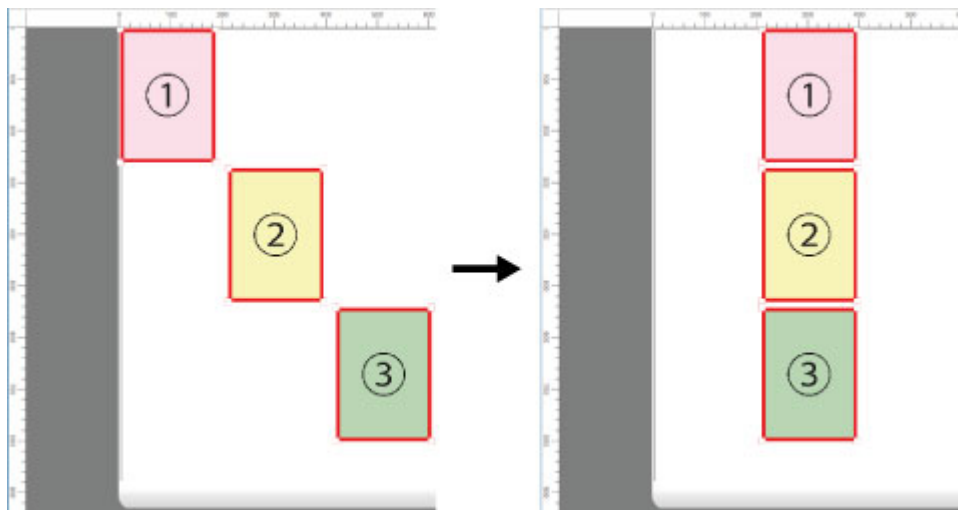
Align Left

Lays out the objects, justifying them to the left.



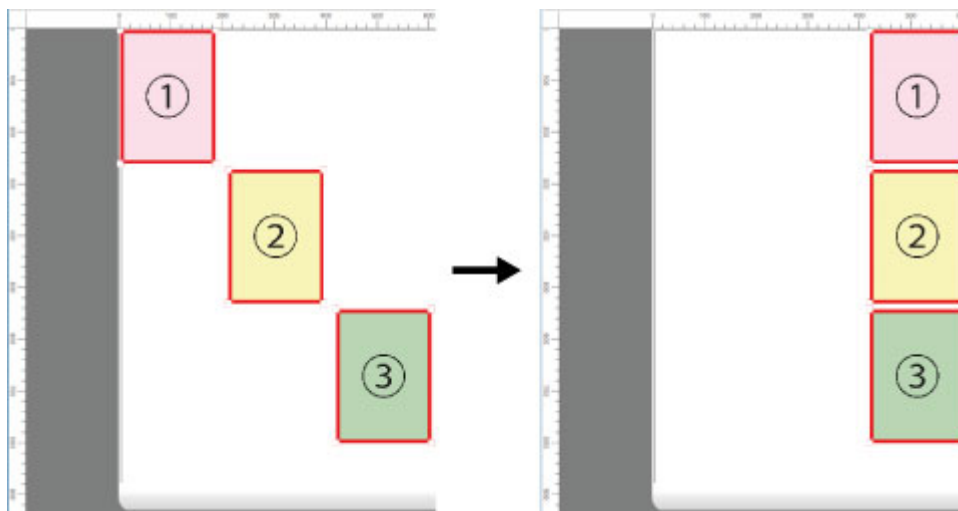
Center Horizontally

Lays out the objects, justifying them to the horizontal center.



Align Right

Lays out the objects, justifying them to the right.



Changing the Object Overlapping Order

You can change the object overlapping order.

1. Select an object.

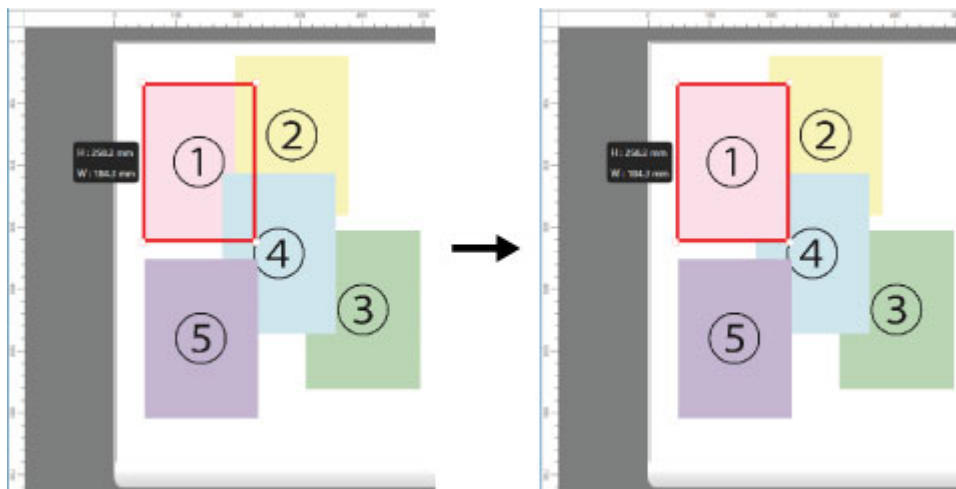
Select an object whose overlapping order you want to change. (See "[Selecting an Object.](#)")

2. Right click the object and select the overlapping order menu.

The following variations appear in the overlapping order menu.

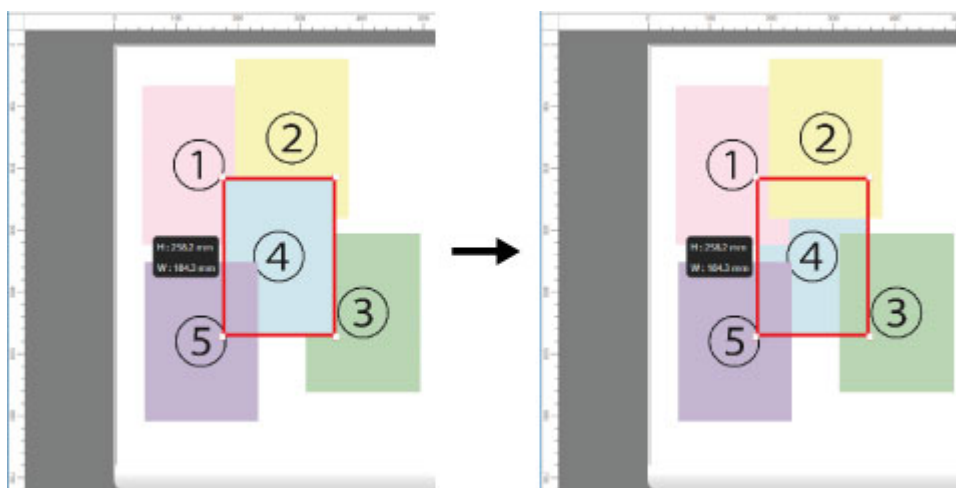
Bring to Front

Moves the object to the frontmost position.



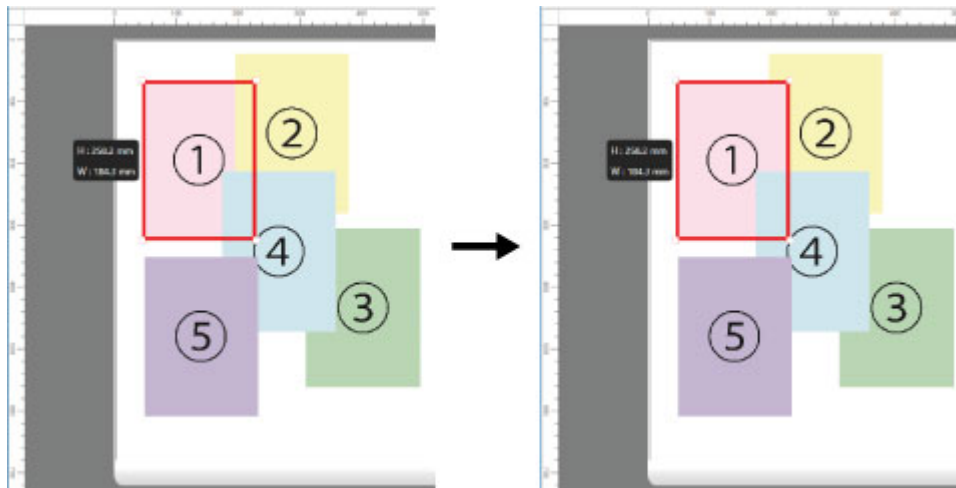
Send to Back

Moves the object to the backmost position.



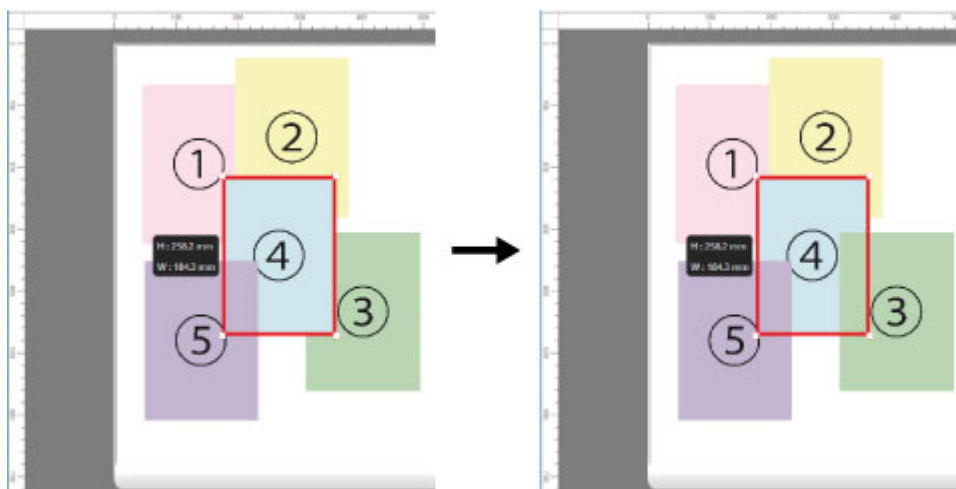
Bring Forward

Moves the object one position to the front.



Send Backward

Moves the object one position to the back.



»» Note

- The order of overlapping affects the order of objects automatically laid out.

Pasting a Copied or Cut Object

1. Select an object.

Select an object to copy or cut. (See "[Selecting an Object.](#)")

2. Execute **Copy** or **Cut**.

Click  **Copy** or  **Cut** from the toolbar.

Alternatively, you may select **Copy** or **Cut** from the **Edit** menu.

3. Paste object.

Click  **Paste** from the toolbar.

Alternatively, you may select **Paste** from the **Edit** menu.

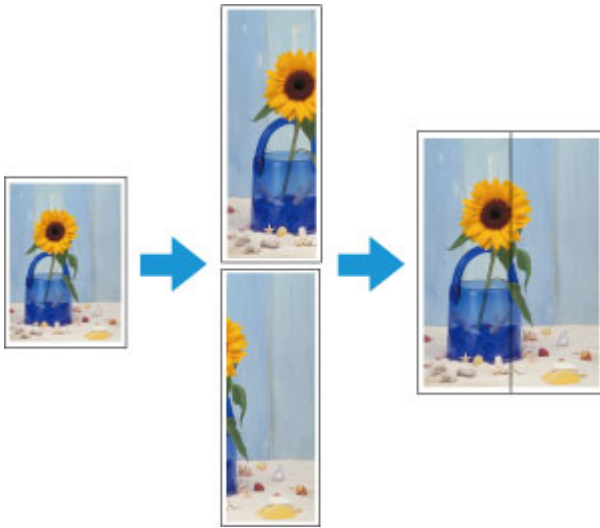
»»» Note

- The copied or cut object is laid out at the end of the page.
- You can also select by clicking the right button of the mouse on an object.

Dividing and Printing Objects

Divide a single page, and then print it.

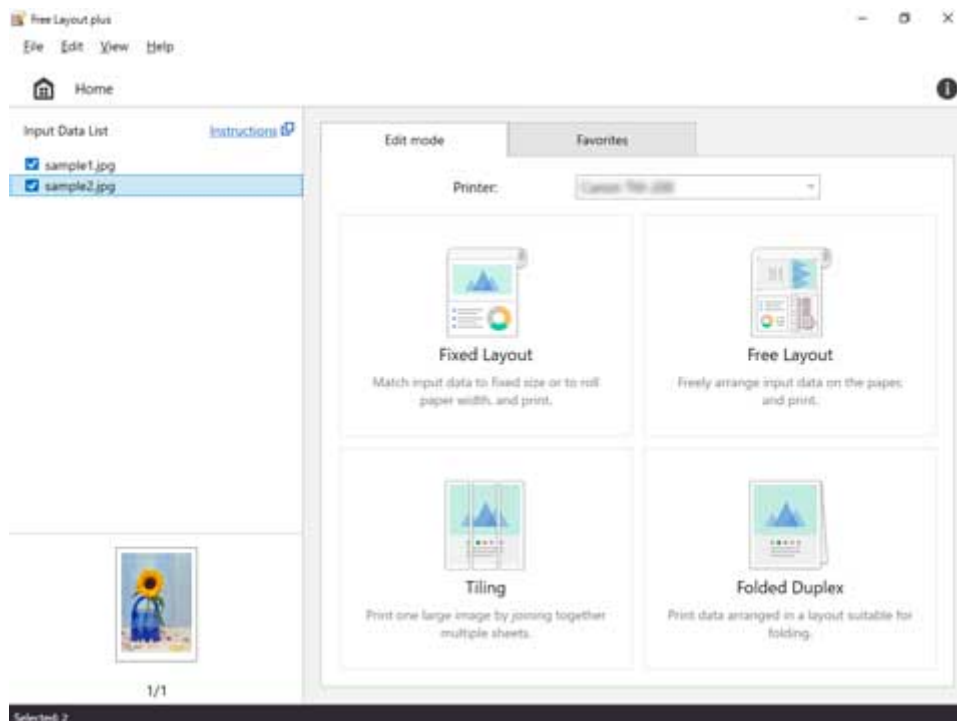
You can align the printouts and glue them together to create a larger printed image.



1. Open the file you want to print, and then start **Free Layout plus**.

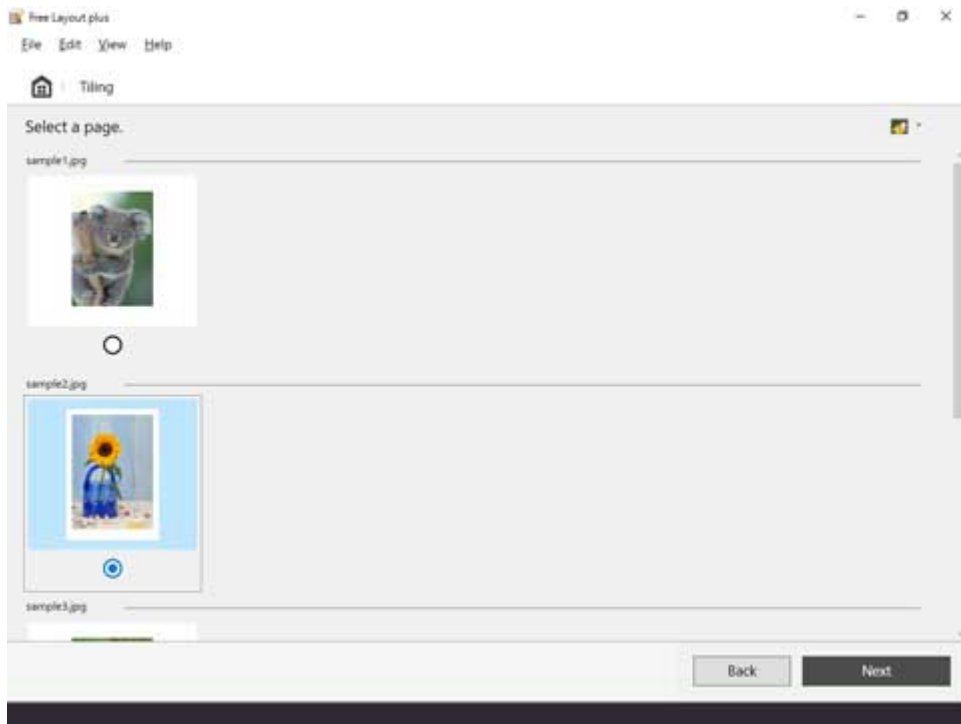
For details about starting procedures, see "[Starting Free Layout plus and Inputting Data.](#)"

2. Click **Tiling**.



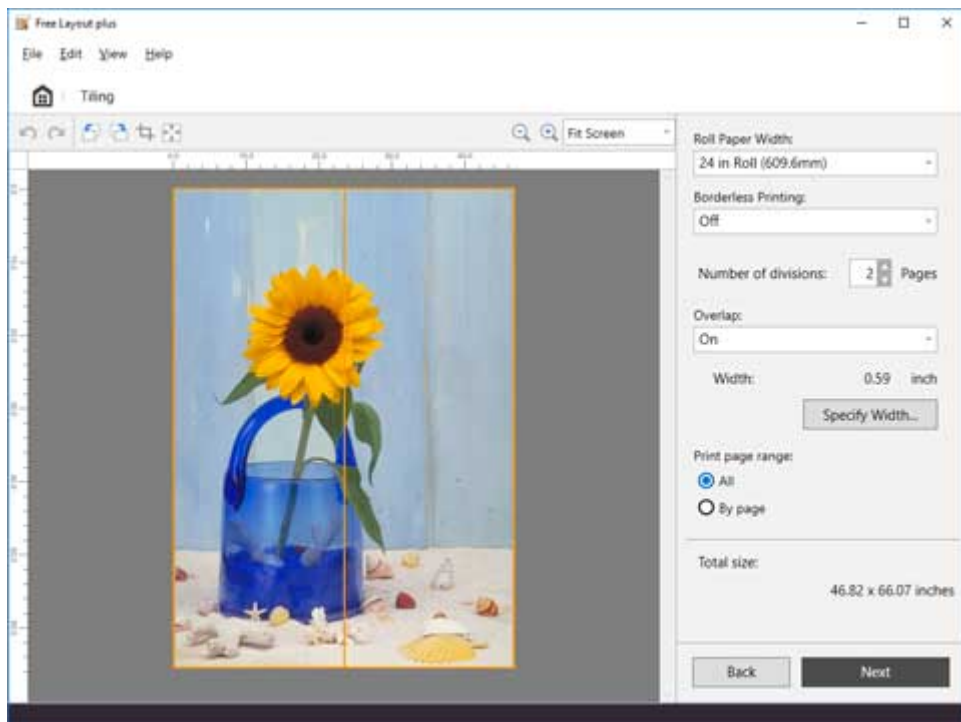
The page selection screen in the Tiling mode appears.

3. Select one page to print, and then click **Next**.



The edit screen in the Tiling mode appears.

4. Set the **Roll Paper Width**, **Number of divisions**, and other settings, and then click **Next**.



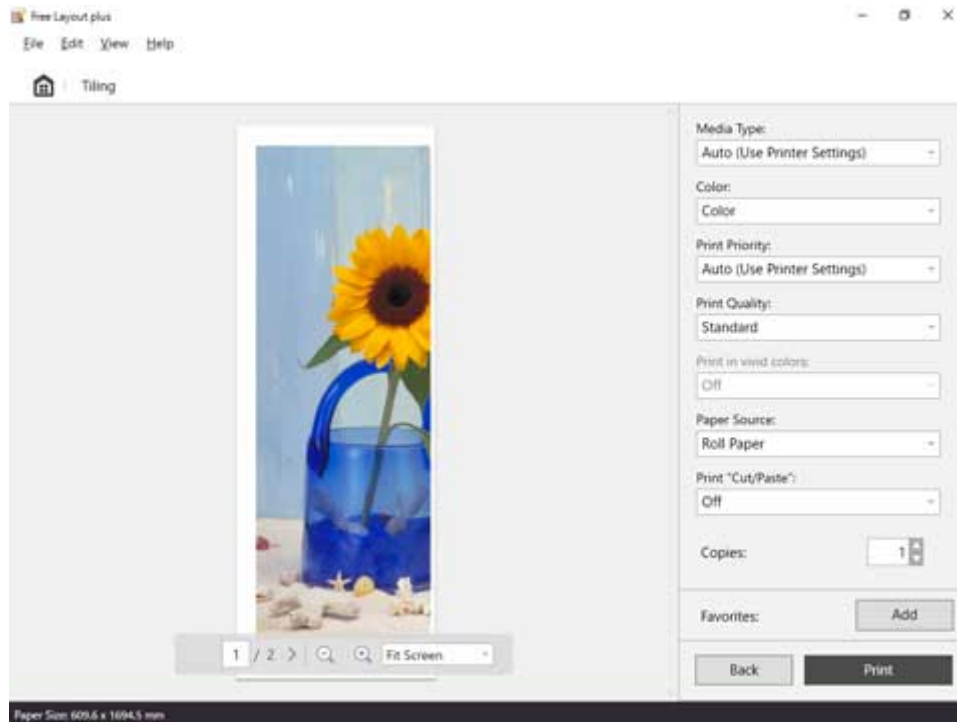
For details about how to do settings in the edit screen, see "[Edit Screen](#)" in "Tiling Mode."

The print settings screen in the Tiling mode appears.

»» Note

- By selecting **On** in **Borderless Printing**, the image is printed so a white margin does not appear on all four edges of the paper after the printouts are pasted together.

5. After setting the items related to printing, click **Print**.



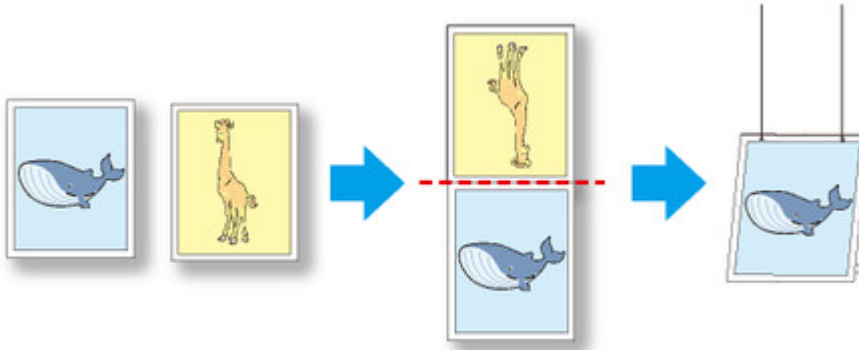
For details about how to do settings in the print settings screen, see "[Print Settings Screen](#)" in "Tiling Mode."

Printing starts.

Printing as Folded Duplex

This prints 2 pages consecutively.

You can create a kind of two-sided printout by folding it down the middle. This can be used such as for advertising posters that are suspended from the ceiling.



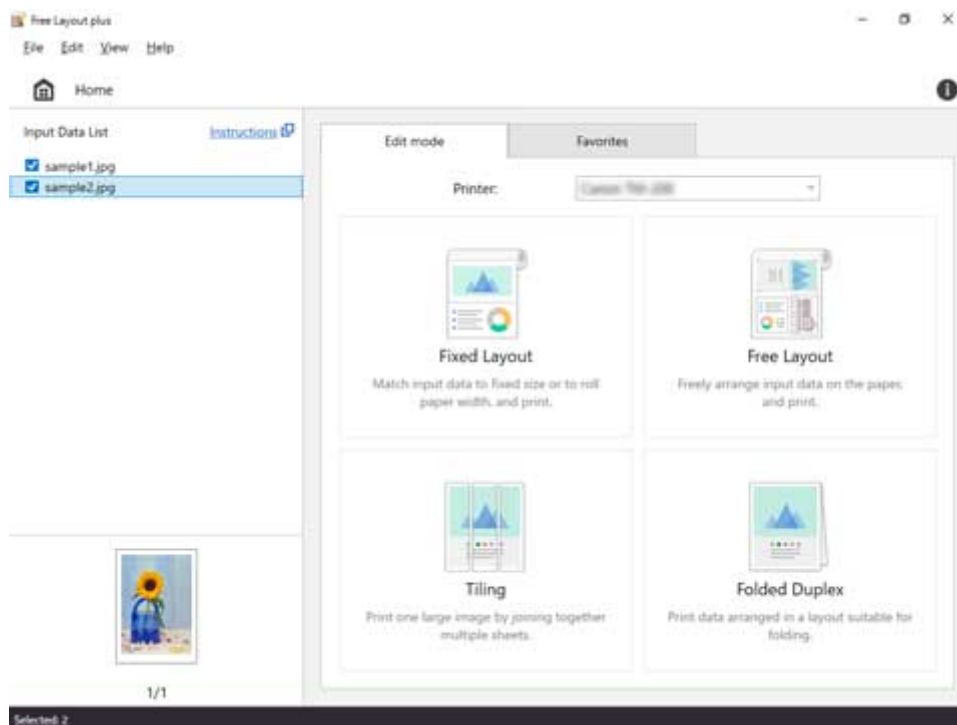
1. Open the file you want to print, and then start **Free Layout plus**.

For details about starting procedures, see "[Starting Free Layout plus and Inputting Data.](#)"

►►► Note

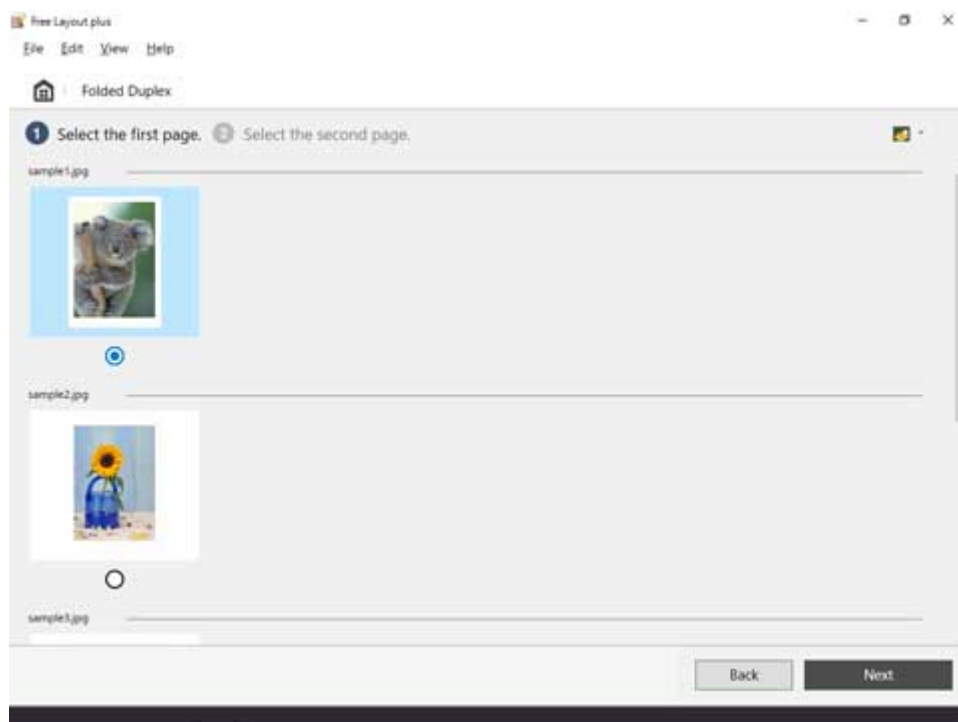
- If you want to lay out different data images for the front and back, while **Free Layout plus** is running, open the other data, and repeat the operation in step 1.

2. Click **Folded Duplex**.



The page selection screen in the Folded Duplex mode is displayed.

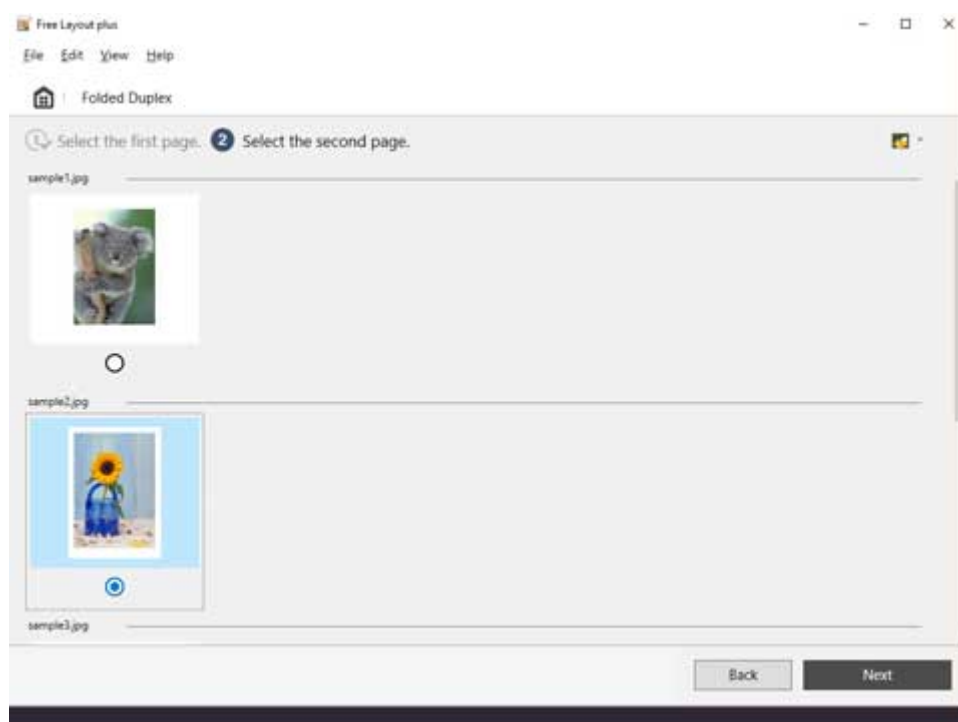
3. Select one page to print on the front, and then click **Next**.



►►► Note

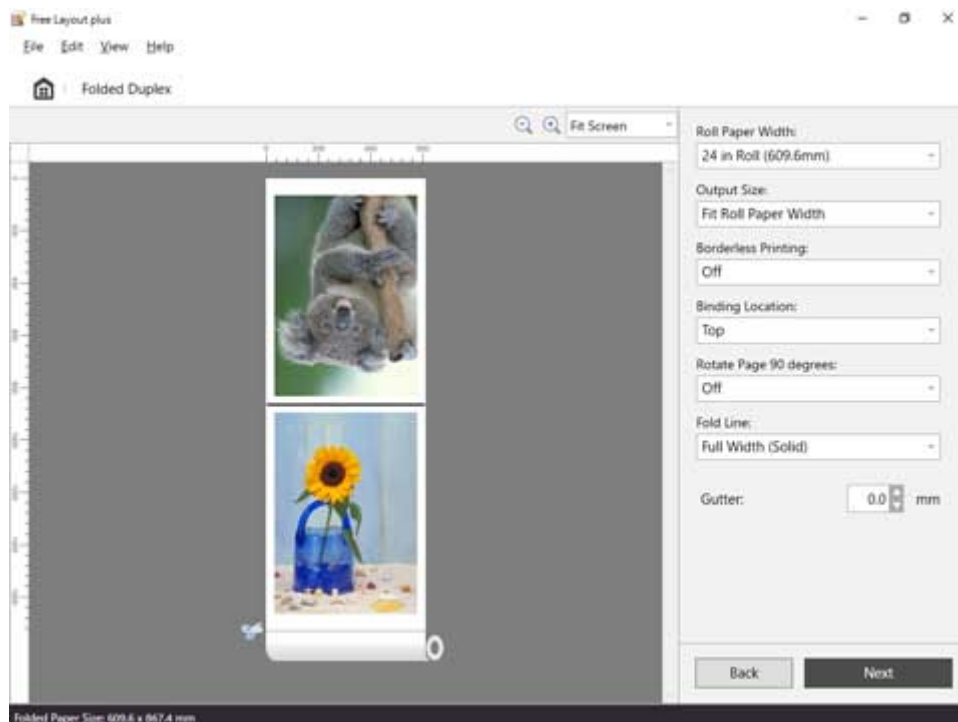
- If only one page of input data has been selected on the home screen, then the edit screen opens, not the page selection screen, with the same image selected for both front and back. Go to step 5.

4. Select one page to print on the back, and then click **Next**.



The edit screen in the Folded Duplex mode is displayed.

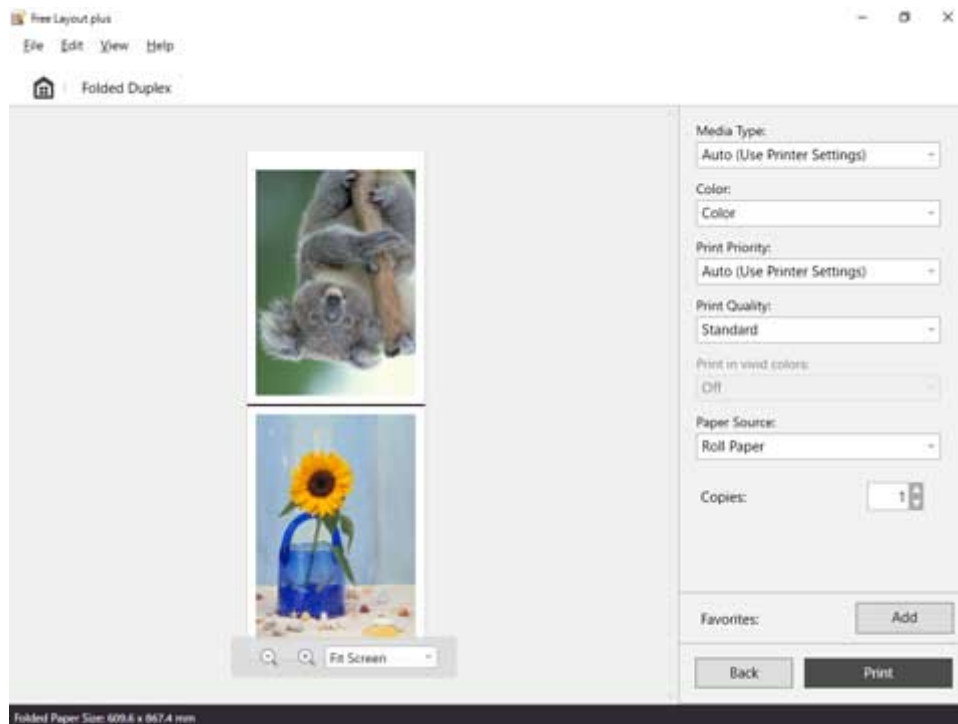
5. Set the **Roll Paper Width**, **Binding Location**, and other settings, and then click **Next**.



For details about how to do settings in the edit screen, see "[Edit Screen](#)" in "Folded Duplex Mode."

The print settings screen in the Folded Duplex mode is displayed.

6. After setting the items related to printing, click **Print**.



For details about how to do settings in the print settings screen, see "[Print Settings Screen](#)" in "Folded Duplex Mode."

Printing starts.

Printing Curtains/Banners

Print a document you created in Microsoft Word or Microsoft PowerPoint to fit the entire width of the roll paper.

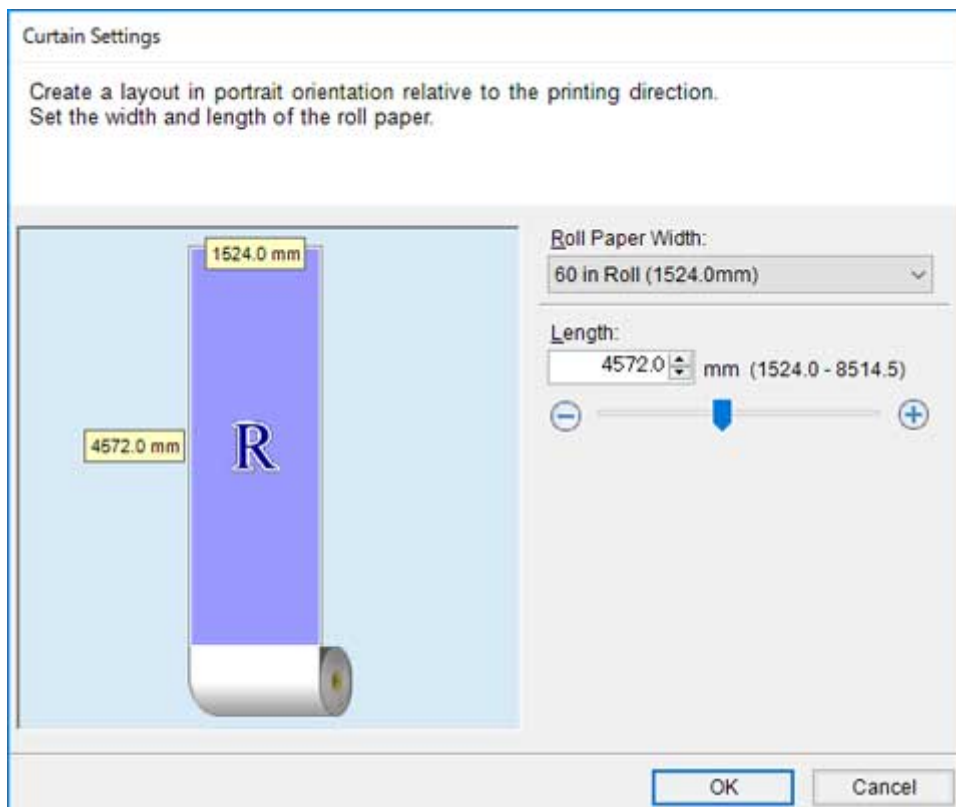
You can use this to print curtains or banners.

The procedure here is explained using the creation of a curtain as an example.

1. Start Microsoft Word or Microsoft PowerPoint.
2. Select **Canon Free Layout plus** ribbon.
3. Click **Curtain** in **Large-format settings**.

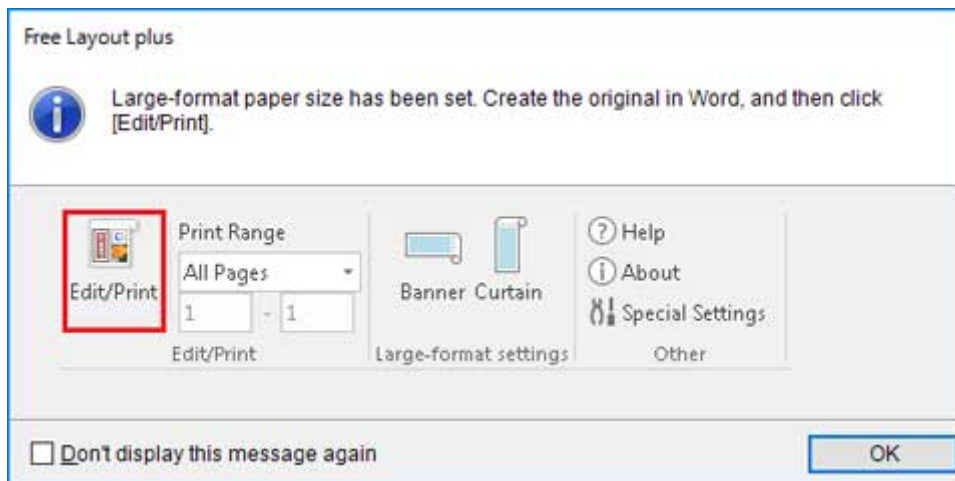


4. Set the **Roll Paper Width** and **Length**, and then click **OK**.



Sets the size of the paper for editing; long paper for curtains and wide paper for banners.

5. If a message appears, check the content, and then click **OK**.



6. Edit and create a document.

Create a document on the size of paper you created.

7. Click **Edit/Print.**

Free Layout plus starts when the document you created appears in **Input Data List**.

8. Click **Fixed Layout.**

The edit screen in the Fixed Layout mode is displayed according to the size of the paper you created.

9. Click **Next.**

The print settings screen in the Fixed Layout mode is displayed.

»» Important

- If the settings in the edit screen are changed, you may not be able to print on the paper size you created. Click Next without changing the settings.

10. After setting the items related to printing, click **Print.**

For details about how to do settings in the print settings screen, see "[Print Settings Screen](#)" in "Fixed Layout Mode."

Printing starts.

»» Important

- The layout may collapse if you create a form using existing data. If that is the case, modify the data again.