

# Canon

## GX5000 series

### Getting Started

### Guía de inicio

### Para Começar

Read **Safety and Important Information** (addendum) first.

Lea primero **Información de seguridad e información importante** (apéndice).

Leia **Informações Importantes e Sobre Segurança** (adendo) primeiro.



QT64461V01



Installing the Printer.....page 1

Instalación de la impresora .....página 1

Instalando a impressora .....página 1



Connecting to a Computer, Smartphone or Tablet ..... page 6

Conexión con un ordenador, teléfono inteligente o tableta .....página 6

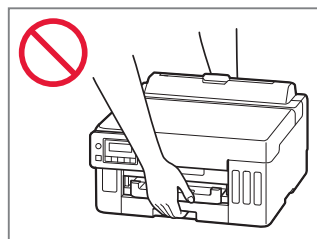
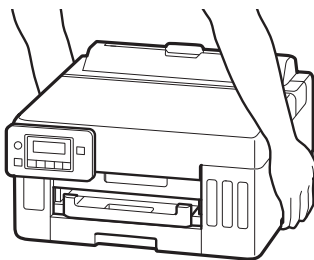
Conectando a um computador, smartphone ou tablet.....página 6

---

## Holding the Printer

Cómo sujetar la impresora

Segurando a impressora



# Setting Up the Printer



**For Setup, visit the URL**

**<https://ij.start.canon>**

or scan the code with your mobile device



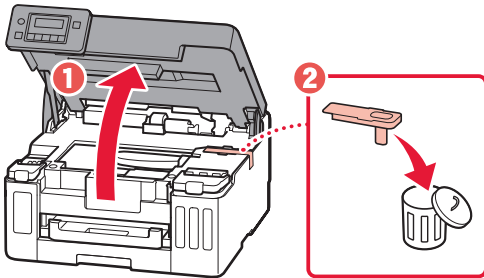
- Follow the instructions below if you do not have an internet connection.

## 1. Box Contents

- Ink Bottles
- Power Cord
- Safety and Important Information
- Getting Started (this manual)

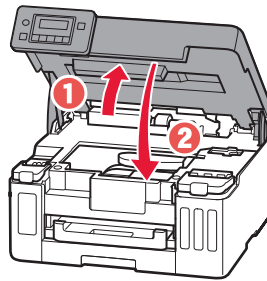
## 2. Removing the Orange Tape

- 1 Remove the orange tape.
- 2 Open the top cover, and then remove the orange tape.



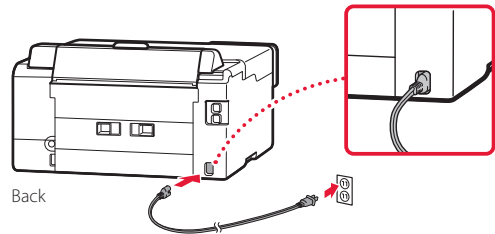
- 3 Close the top cover.

- If you lift the top cover slightly and release it, it will close by itself.

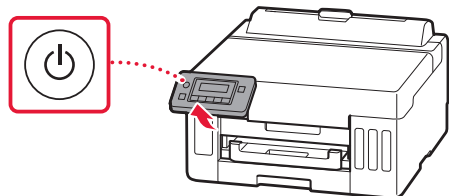


## 3. Turning on the Printer

- 1 Connect the power cord.



- 2 Open the operation panel and press the **ON** button.



## Setting Up the Printer

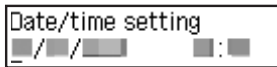
- 3 When the following screen appears, use the ◀ and ▶ buttons to select a language, and then press the **OK** button.



### Important

If an error appears on the screen, see "If an error message (support code) appears on the screen" on page 5 and follow the instructions.

- 4 Use the ◀, ▶, and **OK** buttons to set the date and time.

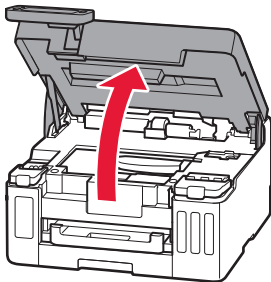


## 4. Pouring Ink

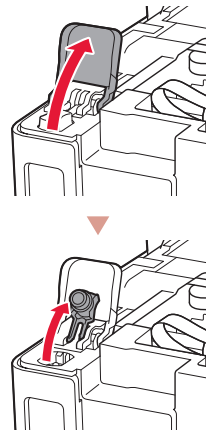
### Important

This product requires careful handling of ink. Ink may splatter when the ink tanks are filled with ink. If ink gets on your clothes or belongings, it may not come off.

- 1 Open the top cover.

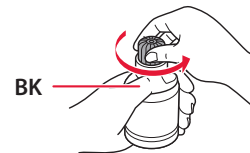


- 2 Open the ink tank cover and tank cap on the left of the printer.

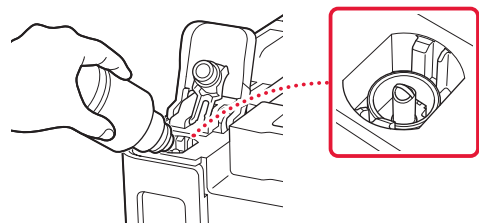


- 3 Hold the ink bottle upright and gently twist the bottle cap to remove.

### Check!

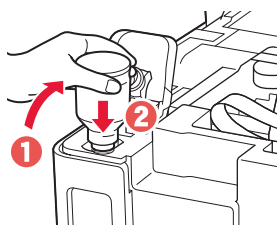


- 4 Align the nozzle of the ink bottle with the inlet.



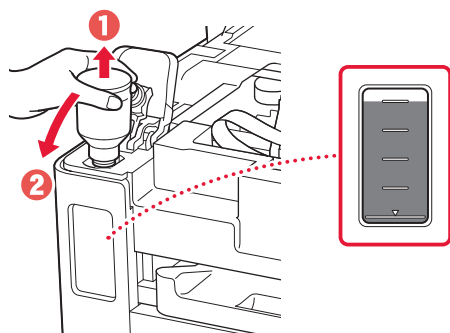
5 Slowly stand the ink bottle upside down and push down to pour the ink.

- If the ink does not pour, gently remove the ink bottle and try again.

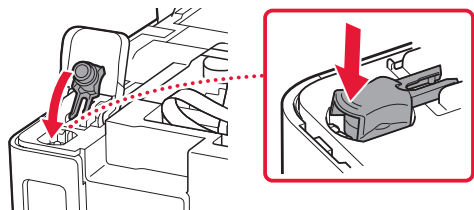


6 Gently remove the ink bottle from the inlet.

- Be careful not to spill the ink.



7 Replace the tank cap **securely**.

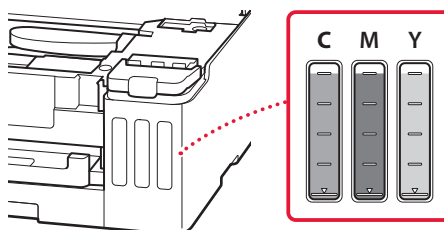


8 Close the ink tank cover securely.



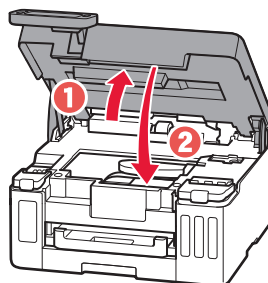
9 Repeat steps 2 through 8 to pour all ink into the corresponding ink tanks on the right.

Check!



10 Close the top cover.

- If you lift the top cover slightly and release it, it will close by itself.



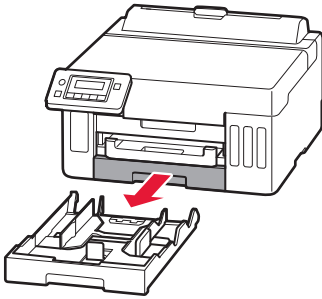
# Setting Up the Printer

## 5. Loading Paper

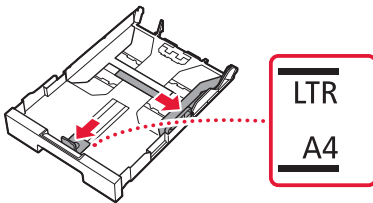
- 1 Use the ◀ and ▶ buttons to select **Yes**, and then press the **OK** button.



- 2 Remove the cassette from the printer.

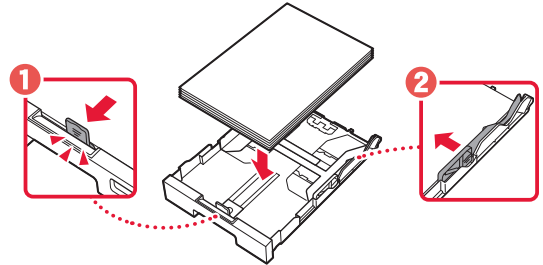


- 3 Slide apart the paper guides.
  - Slide the right paper guide to the right edge. Align the front paper guide with the Letter or A4 mark.

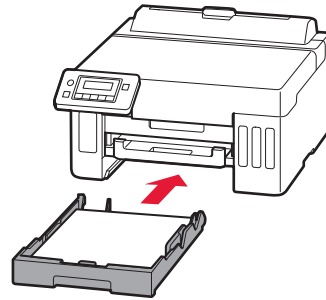


- 4 Load Letter or A4 sized plain paper.

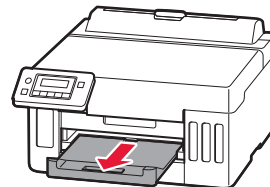
- Place the paper against the front paper guide, and align the right paper guide to the width of the paper.



- 5 Replace the cassette.



- 6 Pull out the paper output tray.



- 7 Follow the on-screen instructions, and then press the **OK** button.

Load A4 or Letter sized paper  
[OK]Print



Adjusting for first use...  
About 1 min. remaining

- The alignment process prints out one double sided sheet. Wait without touching the paper until the screen in step 8 appears.

- 8 Follow the on-screen instructions, and then press the **OK** button.

Do you want to update all drivers?  
< Yes > No



Setup is complete  
[OK]



To connect to a computer  
[OK]



Ready to print

- ➔ Proceed to the next page.

### ? If an error message (support code) appears on the screen

Remove all protective material  
Support code 1890 — Support code

Check the support code, and then follow the instructions if the displayed code is written below.

- **1890**  
Protective material remaining.  
➔ "2. Removing the Orange Tape" on page 1

For all other cases, refer to the **Online Manual**.

## Setting Up the Printer

### What device are you connecting?



Computer



Computer and  
smartphone



Smartphone

### 6-a

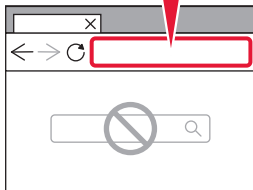
## Connecting to a Computer


If you are using multiple computers, perform these steps on each computer.



- 1 Access the Canon website from your computer.

<https://ij.start.canon>



- 2 Select  **Set Up**.
- 3 Enter your printer's model name and click **Go**.

- 4 Click **Start**, and then select **Connecting to a Computer/ Smartphone**.

- The following steps are for Windows users.

- 5 Click **Download**.

- 6 Run the downloaded file.

- Follow the on-screen instructions. This may take some time.
- To connect to a smartphone as well, see "6-b. Connecting to a Smartphone" on page 7.



## 6-b

### Connecting to a Smartphone

If you are using multiple smartphones, perform these steps on each smartphone.



#### 1 Install the "Canon PRINT Inkjet/SELPHY" app on your smartphone.



- Search for "Canon PRINT" in App Store, or Google Play.
- Access the Canon website to download the app.



#### 2 Open the installed app, and follow the on-screen instructions in the app to add your printer.



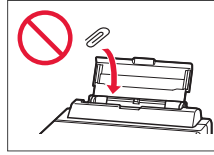
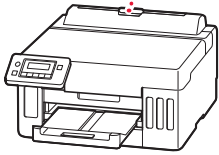
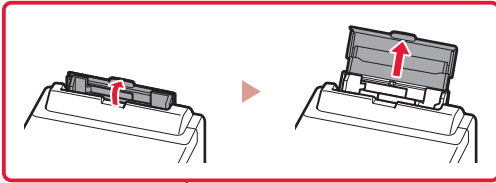
---

Once you have added your printer, you can print from your smartphone. To print photos, see "Loading Paper" on page 8.

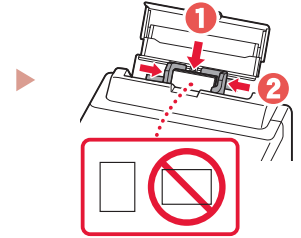
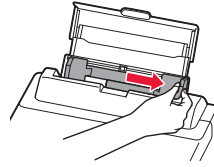
---

## Loading Paper

- 1 Open the rear tray cover and extend the paper support.



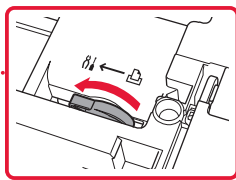
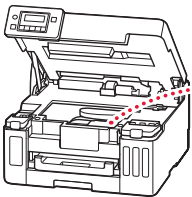
- 2 Slide the right-hand side paper guide to the far right.
- 3 Load several sheets of paper with the print side facing up and slide the side paper guide against the edge of the paper stack.



## Transporting Your Printer

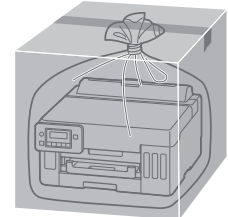
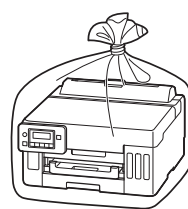
When relocating the printer, check the following. Refer to the **Online Manual** for details.

Check that the position of the ink valve lever is closed.



Pack the printer in a plastic bag in case ink leaks.

- Pack the printer in a sturdy box so that it is placed with its bottom facing down, using sufficient protective material to ensure safe transport.
- Do not tilt the printer. Ink may leak.
- Please handle with care and ensure the box remains flat and NOT turned upside down or on its side, as the printer may be damaged and ink in the printer may leak.
- When a shipping agent is handling transport of the printer, have its box marked "THIS SIDE UP" to keep the printer with its bottom facing down. Mark also with "FRAGILE" or "HANDLE WITH CARE".



# Instalación de la impresora



Para la configuración,  
visite la URL

<https://ij.start.canon>



o bien escanee el código con su dispositivo móvil

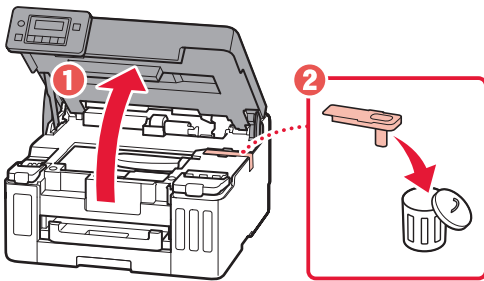
- Siga las instrucciones que se proporcionan a continuación si no tiene conexión a Internet.

## 1. Contenido de la caja

- Frascos de tinta
- Cable de alimentación
- Información de seguridad e información importante
- Guía de inicio (este manual)

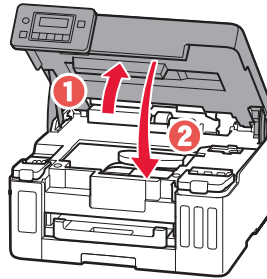
## 2. Retirar la cinta naranja

- 1 Retire la cinta naranja.
- 2 Abra la cubierta superior y retire la cinta naranja.



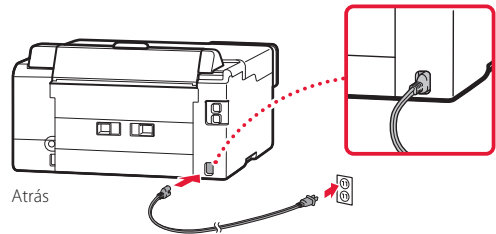
## 3. Cierre la cubierta superior.

- Si levanta la cubierta superior ligeramente y la suelta, se cerrará sola.

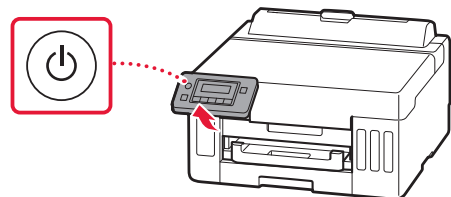


## 3. Encender la impresora

- 1 Conecte el cable de alimentación.



- 2 Abra el panel de control y pulse el botón **ACTIVADO (ON)**.



## Instalación de la impresora

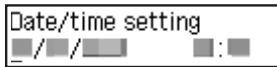
- 3 Si aparece la siguiente pantalla, use los botones ◀ y ▶ para seleccionar el idioma y pulse el botón **OK**.



### »»» Importante

Si aparece un error en la pantalla, consulte "Si se muestra un mensaje de error (código de asistencia) en la pantalla" en la página 5 y siga las instrucciones.

- 4 Utilice los botones ◀, ▶ y **OK** para establecer la fecha y la hora.

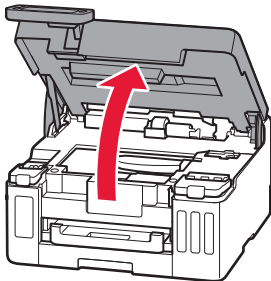


## 4. Verter la tinta

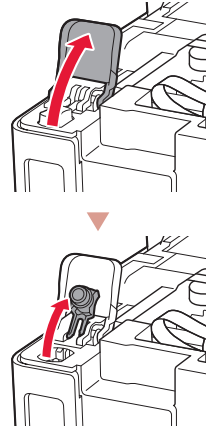
### »»» Importante

Este producto requiere un tratamiento cuidadoso de la tinta, ya que puede salpicar cuando se rellenan de tinta los depósitos de tinta. Es posible que las manchas de tinta no salgan de la ropa u otras pertenencias.

- 1 Abra la cubierta superior.

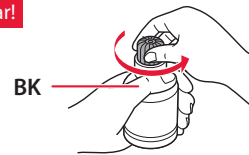


- 2 Abra la cubierta del depósito de tinta y la tapa del depósito a la izquierda de la impresora.

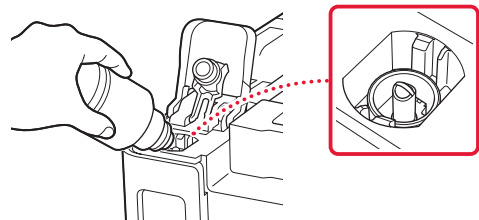


- 3 Sujete el frasco de tinta hacia arriba y gire suavemente la tapa del frasco para retirarla.

¡Comprobar!

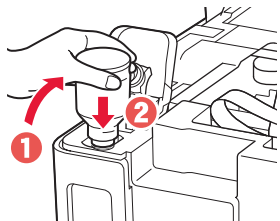


- 4 Alinee la boquilla del frasco de tinta con la entrada.



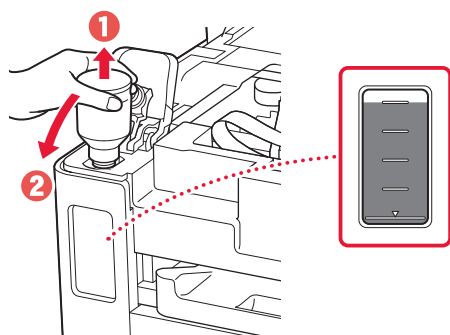
5 Coloque lentamente el frasco de tinta boca abajo y empuje hacia abajo para verter la tinta.

- Si la tinta no se vierte, retire suavemente el frasco de tinta e inténtelo de nuevo.

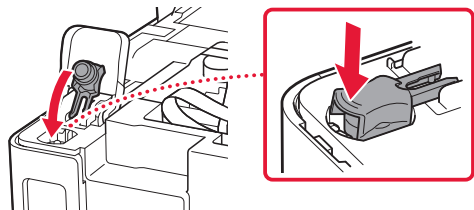


6 Retire suavemente el frasco de tinta de la entrada.

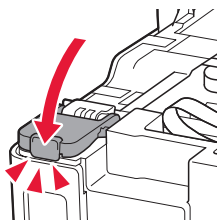
- Tenga cuidado de no derramar la tinta.



7 Vuelva a colocar la tapa del depósito firmemente.

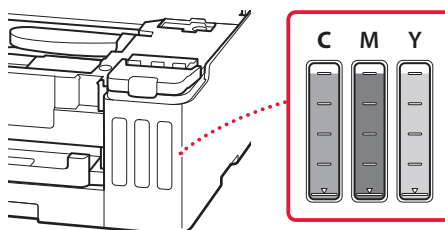


8 Cierre la cubierta del depósito de tinta firmemente.



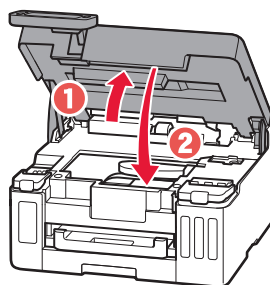
9 Repita los pasos del 2 al 8 para verter toda la tinta en los depósitos de tinta correspondientes de la derecha.

**¡Comprobar!**



10 Cierre la cubierta superior.

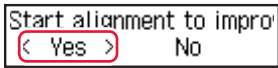
- Si levanta la cubierta superior ligeramente y la suelta, se cerrará sola.



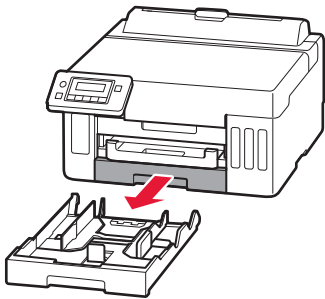
# Instalación de la impresora

## 5. Carga del papel

- 1 Use los botones ◀ y ▶ para seleccionar **Sí (Yes)** y, a continuación, pulse el botón **OK**.

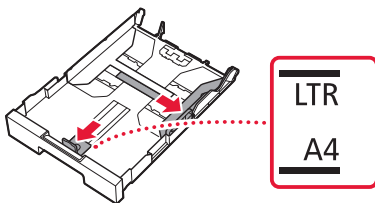


- 2 Retire el cassette de la impresora.



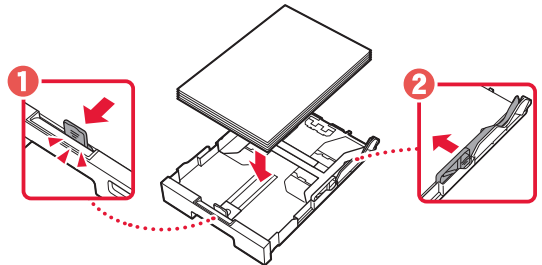
- 3 Separe las guías del papel deslizándolas.

- Deslice la guía del papel derecha hacia el borde derecho. Alinee la guía del papel frontal con la marca Carta o A4.

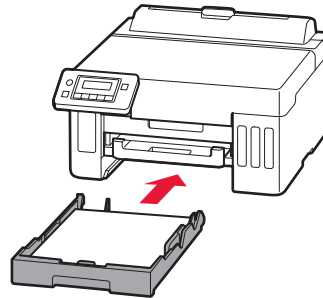


- 4 Cargue papel Carta o papel normal de tamaño A4.

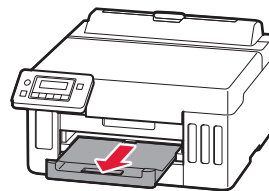
- Coloque el papel delante de la guía del papel frontal y alinee la guía del papel derecha con el ancho del papel.



- 5 Reemplace el cassette.



- 6 Extraiga la bandeja de salida del papel.



- 7 Siga las instrucciones en pantalla y luego pulse el botón **OK**.

Load A4 or Letter sized paper  
[OK]Print



Adjusting for first use...  
About 1 min. remaining

- El proceso de alineación imprime una hoja de doble cara. Espere sin tocar el papel hasta que aparezca la pantalla del paso 8.

- 8 Siga las instrucciones en pantalla y luego pulse el botón **OK**.

Do you want to update all drivers?  
< Yes > No



Setup is complete  
[OK]



To connect to a computer  
[OK]



Ready to print

➔ Continúe a la página siguiente.

### ? Si se muestra un mensaje de error (código de asistencia) en la pantalla

Remove all protective materials  
Support code 1890

Código asist.  
(Support code)

Compruebe el código de asistencia y después siga las instrucciones si el código que se muestra está escrito a continuación.

- **1890**  
Material de protección restante.  
➔ "2. Retirar la cinta naranja" en la página 1

Para los demás casos, consulte el **Manual en línea**.

### ¿Qué dispositivo va a conectar?



Ordenador



Ordenador y  
teléfono inteligente



Teléfono inteligente



## 6-a

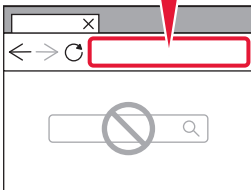
### Conectar al ordenador


Si utiliza varios ordenadores, realice estos pasos en cada ordenador.



- 1 Acceda al sitio web de Canon desde el ordenador.

<https://ij.start.canon>



- 2 Seleccione  **Configurar**.
- 3 Escriba el nombre del modelo de su impresora y haga clic en **Ir**.

- 4 Haga clic en **Iniciar** y, a continuación, seleccione **Conexión con un ordenador/teléfono inteligente**.

- Los siguientes pasos son para usuarios de Windows.

- 5 Haga clic en **Descargar**.

- 6 Ejecute el archivo descargado.

- Siga las instrucciones que aparecen en pantalla. Esto puede llevar algún tiempo.
- Para conectar con un teléfono inteligente también, consulte "6-b. Conexión con un teléfono inteligente" en la página 7.



## 6-b

### Conexión con un teléfono inteligente

Si utiliza varios teléfonos inteligentes, realice estos pasos en cada teléfono inteligente.



- 1 Instale la aplicación "Canon PRINT Inkjet/SELPHY" en su teléfono inteligente.



- Busque "Canon PRINT" en App Store o Google Play.
- Acceda al sitio web Canon para descargar la aplicación.



- 2 Abra la aplicación instalada y luego siga las instrucciones en la aplicación para agregar su impresora.



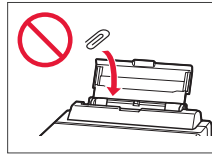
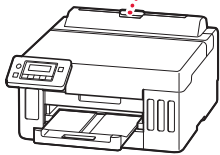
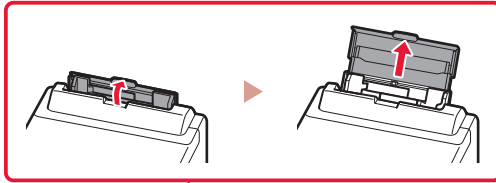
---

Cuando haya agregado la impresora, podrá imprimir desde su teléfono inteligente. Para imprimir fotos, consulte "Carga de papel" en la página 8.

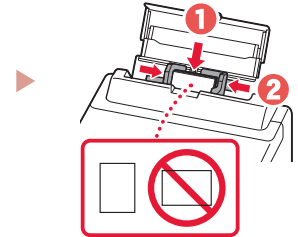
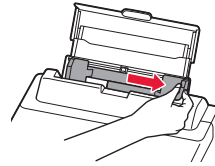
---

## Carga de papel

- 1 Abra la cubierta de la bandeja posterior y extienda el soporte del papel.



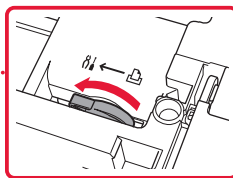
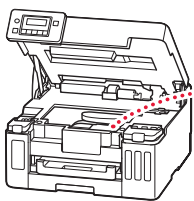
- 2 Deslice la guía del papel del lado derecho totalmente hacia la derecha.
- 3 Cargue varias hojas de papel con la cara de impresión hacia arriba y deslice la guía del papel lateral contra el borde de las hojas de papel.



## Transporte de la impresora

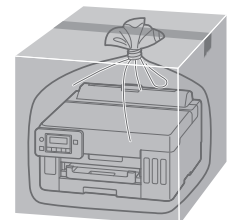
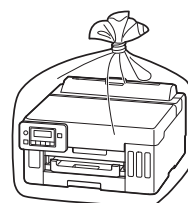
Cuando vaya a transportar la impresora, compruebe lo siguiente. Consulte el **Manual en línea** para obtener más información.

Compruebe que la palanca de válvula de tinta esté en la posición cerrada.



Embale la impresora en una bolsa de plástico por si hay derrames de tinta.

- Embale la impresora en una caja resistente y de modo que no quede boca abajo. Utilice suficiente material de protección para garantizar un transporte seguro.
- No incline la impresora. De lo contrario, es posible que la tinta se derrame.
- Manipule con cuidado y asegúrese de que la caja permanece en una superficie plana y que NO se coloca boca abajo o de lado, ya que la impresora podría dañarse y la tinta de la impresora, derramarse.
- Cuando se ocupe del transporte de la impresora una empresa de mensajería, marque la caja con "ESTE LADO ARRIBA" para mantener la impresora con la parte inferior abajo. Márquela también con "FRÁGIL" o "MANEJAR CON CUIDADO".



# Configurando a impressora



**Para configurar, visite a URL**

**<https://ij.start.canon>**

ou digitalize o código com seu dispositivo celular



● Siga as instruções abaixo se você não tiver uma conexão com a internet.

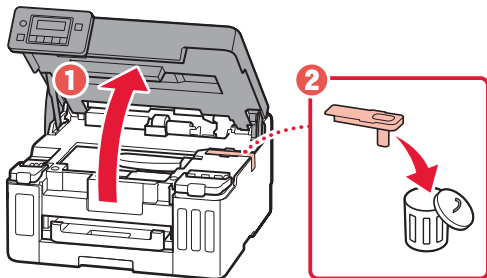
## 1. Conteúdo da caixa

- Garrafas de tinta
- Cabo de alimentação
- Informações Importantes e Sobre Segurança
- Para Começar (este manual)

## 2. Removendo a Fita Laranja

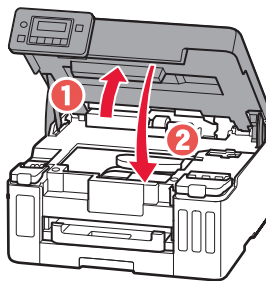
1 Remova a fita laranja.

2 Abra a tampa superior e depois remova a fita laranja.



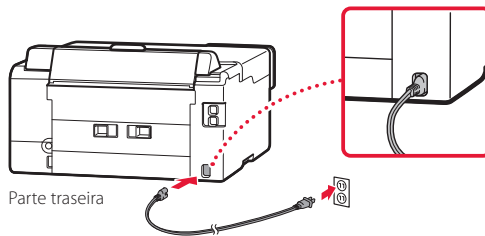
3 Feche a tampa superior.

- Se você levantar levemente a tampa superior e soltá-la, ela fechará sozinha.

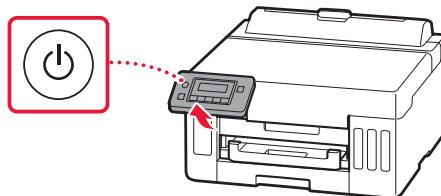


## 3. Ligando a impressora

1 Conecte o cabo de alimentação.

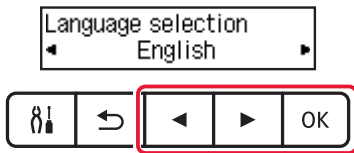


2 Abra o painel de controle e pressione o botão **ATIVADO (ON)**.



## Configurando a impressora

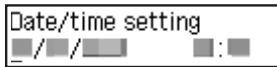
- 3 Quando a tela a seguir for exibida, use os botões ◀ e ▶ para selecionar um idioma e, em seguida, pressione o botão **OK**.



### ►►► Importante

Se um erro aparecer na tela, consulte "Se uma mensagem de erro aparecer (código de suporte) na tela" na página 5 e siga as instruções.

- 4 Use os botões ◀, ▶ e **OK** para definir data e hora.

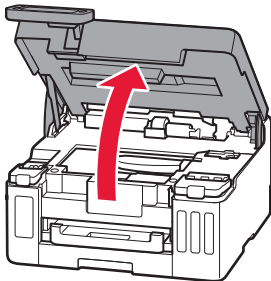


## 4. Colocando tinta

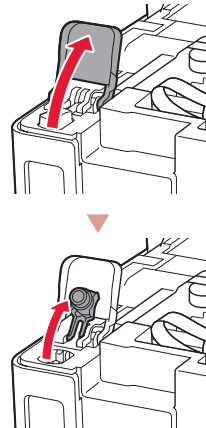
### ►►► Importante

Este produto requer um manuseio cuidadoso da tinta. A tinta pode respingar quando os cartuchos de tinta estiverem cheios de tinta. Se a tinta entrar em contato com suas roupas ou pertences, pode ser que não seja possível removê-la.

- 1 Abra a tampa superior.

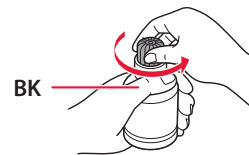


- 2 Abra a tampa do cartucho de tinta e a tampa do cartucho à esquerda da impressora.

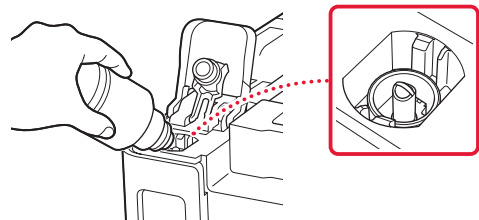


- 3 Segure a garrafa de tinta na posição vertical e gire cuidadosamente a tampa da garrafa para removê-la.

Verificar!

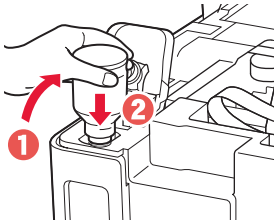


- 4 Alinhe o bocal da garrafa de tinta com a entrada.



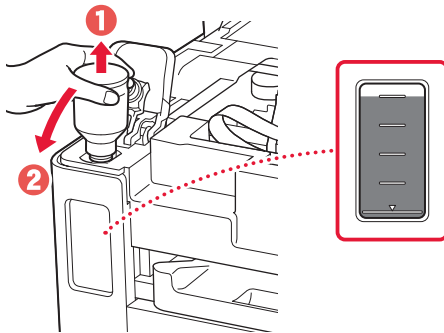
- 5 Levante lentamente a garrafa de tinta de cabeça para baixo e empurre para baixo para despejar a tinta.

- Se a tinta não for despejada, remova lentamente a garrafa de tinta e tente novamente.

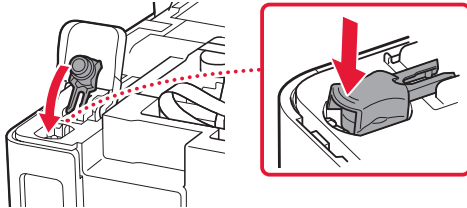


- 6 Remova lentamente a garrafa de tinta da entrada.

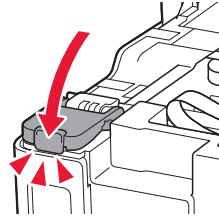
- Tenha cuidado para não derramar a tinta.



- 7 Recoloque **firmemente** a tampa do cartucho.

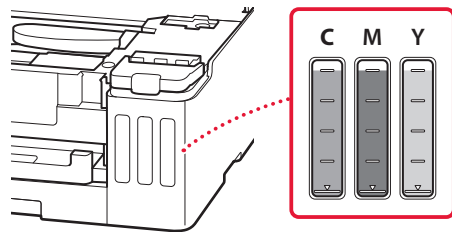


- 8 Feche a tampa do cartucho de tinta com firmeza.



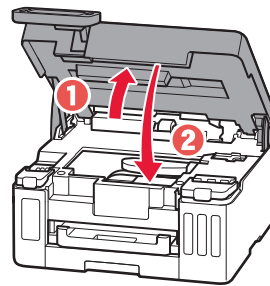
- 9 Repita as etapas de 2 a 8 para colocar toda a tinta nos cartuchos de tinta correspondentes à direita.

Verificar!



- 10 Feche a tampa superior.

- Se você levantar levemente a tampa superior e soltá-la, ela fechará sozinha.



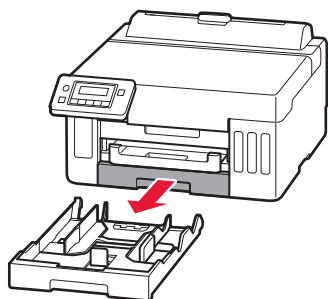
## Configurando a impressora

### 5. Colocando papel

- 1 Use os botões ◀ e ▶ para selecionar **Sim (Yes)** e pressione o botão **OK**.

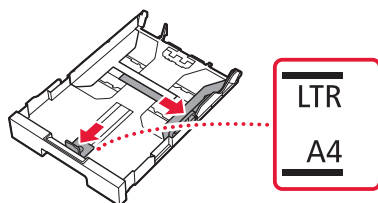


- 2 Remova o cassete da impressora.



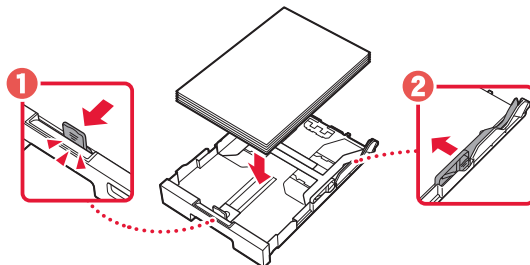
- 3 Deslize para abrir as guias do papel.

- Deslize a guia do papel direita para a borda direita. Alinhe as guias do papel dianteiras com a marca A4 ou Letter.

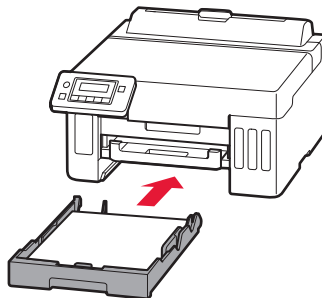


- 4 Coloque papel comum A4 ou Letter.

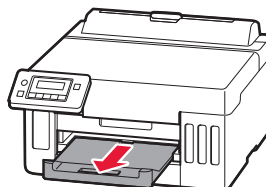
- Coloque o papel na guia do papel frontal e alinhe a guia do papel direita com a largura do papel.



- 5 Substitua o cassete.



- 6 Retire a bandeja de saída do papel.



7 Siga as instruções na tela e pressione o botão **OK**.

Load A4 or Letter sized paper  
[OK]Print



Adjusting for first use...  
About 1 min. remaining

- O processo de alinhamento imprime uma folha frente e verso. Aguarde sem tocar no papel até que a tela na etapa 8 seja exibida.

8 Siga as instruções na tela e pressione o botão **OK**.

Do you want to update all drivers?  
< Yes > No



Setup is complete  
[OK]



To connect to a computer  
[OK]



Ready to print

➔ Prossiga para a página seguinte.

**?** Se uma mensagem de erro aparecer (código de suporte) na tela

Remove all protective material  
Support code 1890 — Cód. suporte (Support code)

Verifique o código de suporte e siga as instruções se o código exibido estiver escrito abaixo.

- **1890**  
Material de proteção restante.  
➔ "2. Removendo a Fita Laranja" na página 1

Para todos os outros casos, consulte o **Manual On-line**.

### Qual dispositivo você está conectando?



Computador



Computador  
e smartphone



Smartphone



## 6-a

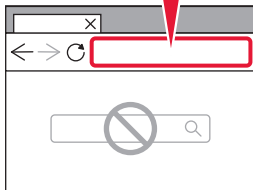
### Conectando a um Computador


Se você estiver usando vários computadores, execute estas etapas em cada computador.



- 1 Acesse o site Canon do seu computador.

<https://ij.start.canon>



- 2 Selecione  **Configurar**.
- 3 Insira o nome do modelo da sua impressora e clique em **Ir**.

- 4 Clique em **Iniciar** e, em seguida, selecione **Conectar a um Computador/Smartphone**.

- As etapas a seguir são para usuários do Windows.

- 5 Clique em **Download**.

- 6 Execute o arquivo baixado.

- Siga as instruções na tela. Isso poderá levar algum tempo.
- Para conectar a um smartphone também, consulte "6-b. Conectando a um smartphone" na página 7.



## 6-b

### Conectando a um smartphone

Se você estiver usando vários smartphones, execute estas etapas em cada smartphone.



#### 1 Instale o aplicativo "Canon PRINT Inkjet/SELPHY" no seu smartphone.



- Procure por "Canon PRINT" na App Store, ou Google Play.
- Acesse o site Canon para fazer o download do aplicativo.



#### 2 Abra o aplicativo instalado e siga as instruções para adicionar sua impressora.



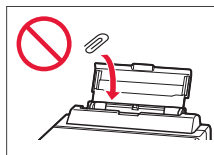
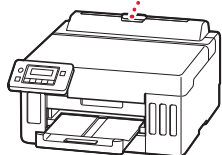
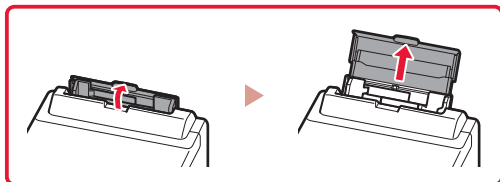
---

Após adicionar sua impressora, você pode imprimir do smartphone. Para imprimir fotos, consulte "Colocando papel" na página 8.

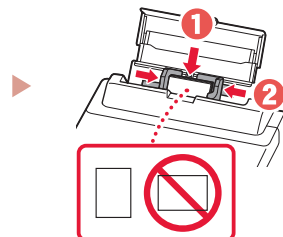
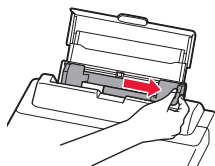
---

## Colocando papel

- 1 Abra a tampa da bandeja traseira e estenda o suporte de papel.



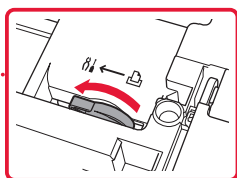
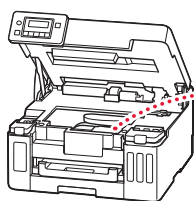
- 2 Deslize a guia do papel da direita até a extremidade direita.
- 3 Coloque várias folhas de papel com o lado a ser impresso virado para cima e deslize a guia do papel lateral em direção à borda da pilha de papel.



## Transportando a Impressora

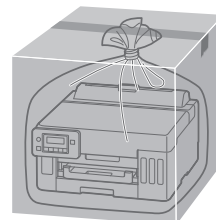
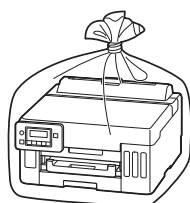
Ao realocar a impressora, verifique o conteúdo a seguir. Consulte o **Manual On-line** para obter detalhes.

Verifique se a posição da alavanca de válvula de tinta está fechada.



Emble a impressora em um saco plástico caso ocorra vazamento de tinta.

- Coloque a impressora em uma caixa resistente de modo que a parte inferior fique virada para baixo, usando material de proteção suficiente para garantir o transporte seguro.
- Não incline a impressora. A tinta pode vazar.
- Manuseie com cuidado e garanta que a caixa permaneça na horizontal, e NÃO de cabeça para baixo ou de lado, pois a impressora pode ser danificada e a tinta da impressora pode vazar.
- Quando um agente de transporte estiver manuseando o transporte da impressora, marque a caixa com "ESTE LADO PARA CIMA" para manter a parte inferior da impressora virada para baixo. Marque também com "FRÁGIL" ou "MANUSEAR COM CUIDADO".



## **Trademarks**

- Windows is a trademark or registered trademark of Microsoft Corporation in the U.S. and/or other countries.
- App Store is a trademark of Apple Inc., registered in the U.S. and other countries.
- Google Play is a registered trademark of Google LLC..

## **Marcas comerciales**

- Windows es una marca comercial o marca comercial registrada de Microsoft Corporation, registrada en EE.UU. y/o en otros países.
- App Store es una marca comercial de Apple Inc., registradas en EE.UU. y en otros países.
- Google Play es una marca comercial registrada de Google LLC.

## **Marcas registradas**

- Windows é uma marca comercial ou marca registrada da Microsoft Corporation nos EUA e/ou em outros países.
- App Store é uma marca registrada da Apple Inc., registradas nos EUA e em outros países.
- Google Play é uma marca registrada do Google LLC.



Access Online Manual

Acesse o Manual On-line

Acceso al Manual en línea

From your browser

Desde su navegador

Do seu navegador



<https://ij.start.canon>

