

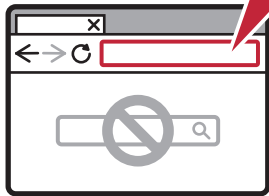
Setup Instructions

Para español, voltear >>
Para português, vire o >>

1

▶ For Setup, visit the URL

<https://ij.start.canon/GX3010>

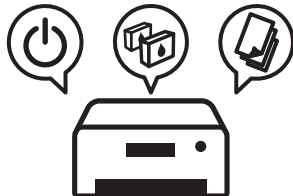


or scan the code with your mobile device



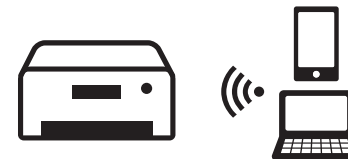
2

Follow the instructions on the website



3

Connect to a computer or mobile device on the website



Instrucciones de instalación

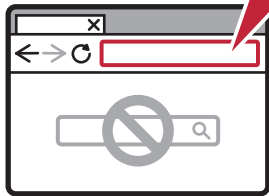
Instruções de configuração

For English, turn over >>

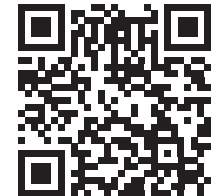
1

▶ Para la configuración, visite el URL
▶ Para Configurar, visite a URL

<https://ij.start.canon/GX3010>

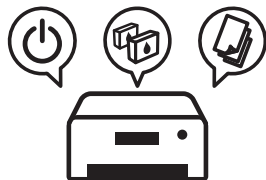


o escanear el código con su dispositivo móvil
ou digitalize o código com seu dispositivo móvel



2

Siga las instrucciones en el sitio web
Siga as instruções do site da



3

Conéctese a una computadora o dispositivo móvil en el
sitio web
Conectar a um computador ou dispositivo móvel no site da

