



Windows

Generic Plus UFR II/LIPSLX/LIPS4/PCL6/PS3 Printer Driver

Installation Guide

Contents

Introduction	2
How to Use the Manual	3
Notations Used in the Manual	4
Disclaimers	5
Copyright	6
Trademarks	7
About This Driver	9
Before Use	11
Installing the Driver	13
Pre-installation Check	14
System Requirements	15
Notes and Warnings Regarding Installation	17
About the Readme File	18
Installation Using the Installer	19
Installer Types	20
Installing by Discovering Devices on a Network	22
Installing by Specifying a Port or IP Address	27
Installing Using a USB Connection	35
Installing a Driver Using Master Setup	39
Installation Without Using the Installer	41
Installing by Specifying an inf File	42
Installing Using a WSD Port	44
Updating/Uninstalling the Driver	46
Updating the Driver	47
Uninstalling the Driver	49
Changing Settings to Match the Usage Environment	52
Using a Shared Printer	53
Installing as a Print Server	54
Setting up Clients of a Shared Printer	56
Changing the Port	58
Installing the PPD File (PS3)	62
Printing	64
Printing from a Computer	65
How to Refer to the Help	67

Creating a Shortcut to the Online Manual	69
Installing a Shortcut to the Online Manual	70
Uninstalling the Shortcut to the Online Manual	71
Troubleshooting	73
Cannot discover a device connected via a WSD port	74

Introduction

Introduction	2
How to Use the Manual	3
Notations Used in the Manual	4
Disclaimers	5
Copyright	6
Trademarks	7

Introduction

- ▶ **How to Use the Manual(P. 3)**
- ▶ **Disclaimers(P. 5)**
- ▶ **Copyright(P. 6)**
- ▶ **Trademarks(P. 7)**

How to Use the Manual

This explains things that you need to know in order to use this manual.

▶ **Notations Used in the Manual(P. 4)**

Notations Used in the Manual

This explains symbols and settings used in this manual.

Symbols Used in This Manual

In this manual, explanations of items and operations that must be followed while using the driver are set forth the symbols that indicate the following.



IMPORTANT

- Indicates operational requirements and restrictions. Be sure to read these items carefully to operate the product correctly, and avoid damage to the product.



NOTE

- Indicates a clarification of an operation, or contains additional explanations for a procedure. Reading these notes is highly recommended.

About Settings

In this manual, setting names displayed on the computer screen are represented as shown in the following examples.

Example:

[Print]

[OK]

Disclaimers

The information in this document is subject to change without notice.

CANON INC. MAKES NO WARRANTY OF ANY KIND WITH REGARD TO THIS MATERIAL, EITHER EXPRESS OR IMPLIED, EXCEPT AS PROVIDED HEREIN, INCLUDING WITHOUT LIMITATION, THEREOF, WARRANTIES AS TO MARKETABILITY, MERCHANTABILITY, FITNESS FOR A PARTICULAR PURPOSE OF USE OR NON-INFRINGEMENT. CANON INC. SHALL NOT BE LIABLE FOR ANY DIRECT, INCIDENTAL, OR CONSEQUENTIAL DAMAGES OF ANY NATURE, OR LOSSES OR EXPENSES RESULTING FROM THE USE OF THIS MATERIAL.

Copyright

Copyright CANON INC. 2023

No part of this publication may be reproduced, transmitted, transcribed, stored in a retrieval system, or translated into any language or computer language in any form or by any means, electronic, mechanical, magnetic, optical, chemical, manual, or otherwise, without the prior written permission of Canon Inc.

Trademarks

macOS and Safari are trademarks of Apple Inc.

All brand names and product names appearing on this document are registered trademarks or trademarks of their respective owners.

All other trademarks are the property of their respective owners.

About This Driver

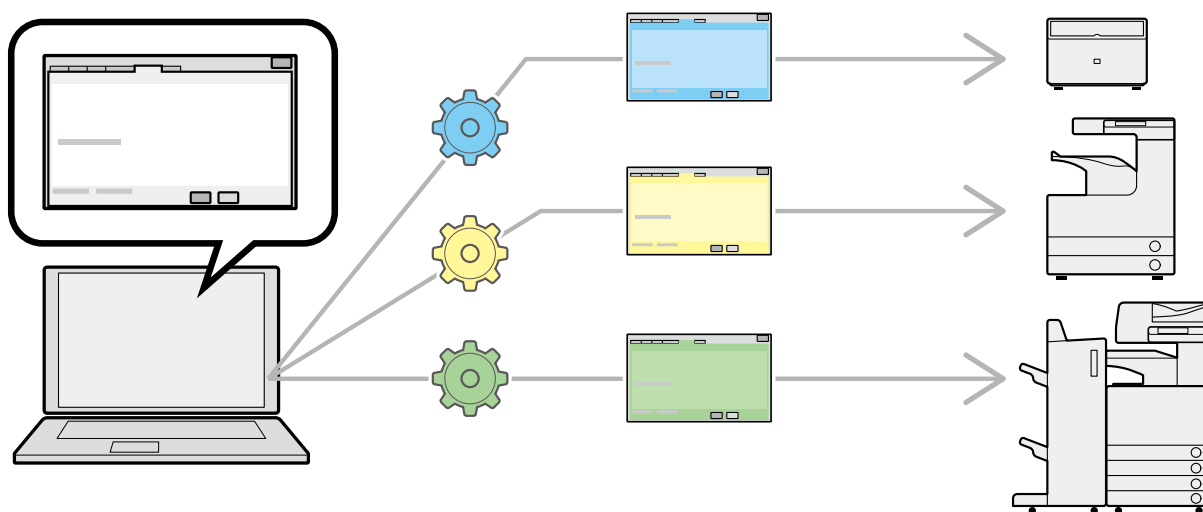
About This Driver 9

About This Driver

This is a generic printer driver that supports various devices. You can use the same driver for all printer models by changing the settings for the printing port and device information.

Features

- Information regarding the functions and options of the device are collectively defined in a "configuration profile." By switching "configuration profiles," you can switch the driver settings screen to match the functions of the device.
- You do not need to reinstall the driver when you add or replace a device.



Utilizing Configuration Profiles

Configuration profiles corresponding to each printer model have been prepared beforehand. You can customize and use a configuration profile corresponding to your printer operation management.

By applying a configuration profile to the driver, the settings in the [Device Settings] sheet can be changed and the functions specific to the device can be set. You can also export and save the function and option settings for the device in the [Device Settings] sheet as a configuration profile.

Examples of How to Utilize Configuration Profiles

- **Making a driver settings screen for the printer model you are using**

When you can acquire the printer model information from the device, a configuration profile is applied automatically and the settings screen changes to match the device. When you cannot acquire the information, apply a configuration profile manually.

- **Efficiently configuring driver settings for multiple computers**

You can export and save the device function and options settings of the [Device Settings] sheet as a configuration profile. The device information of drivers used in other computers can be easily batch set by importing the exported configuration profile.

If you cannot acquire the device information, you can apply it by importing a configuration profile exported in an environment where the information could be acquired.



- For details about how to set device information and how to import and export configuration profiles, refer to the help.

Before Use

Before Use 11

Before Use

- The newest driver software is posted on the Canon web site. Please verify the operating environment etc. and download the appropriate software as required.
Canon Global Site: <https://global.canon/>
- The functions that you can use may vary according to the following conditions.
 - The device you are using and its settings
 - The firmware version of the device
 - The option structure of the device
 - The driver you are using
 - The driver version
 - The computer environment you are using
- When printing from a Windows Store app, because you cannot display the print settings screen of the driver, the number of functions you can set is limited.
- The screen content, procedures, etc. displayed and described in the manual may differ from those actually displayed.
- In this manual, examples using Windows 11 are explained.

Installing the Driver

Installing the Driver	13
Pre-installation Check	14
System Requirements	15
Notes and Warnings Regarding Installation	17
About the Readme File	18
Installation Using the Installer	19
Installer Types	20
Installing by Discovering Devices on a Network	22
Installing by Specifying a Port or IP Address	27
Installing Using a USB Connection	35
Installing a Driver Using Master Setup	39
Installation Without Using the Installer	41
Installing by Specifying an inf File	42
Installing Using a WSD Port	44
Updating/Uninstalling the Driver	46
Updating the Driver	47
Uninstalling the Driver	49

Installing the Driver

This explains items to check and various methods regarding driver installation.

Refer to the items to check before installing the driver.

The installation method differs according to the connection method and environment of the device to use. Select the appropriate method for installation.

Also, refer to the procedure indicated here when updating or uninstalling the driver.

- ▶ **Pre-installation Check(P. 14)**
- ▶ **Installation Using the Installer(P. 19)**
- ▶ **Installation Without Using the Installer(P. 41)**
- ▶ **Updating/Uninstalling the Driver(P. 46)**

Pre-installation Check

This explains what to confirm beforehand in order to install the driver correctly.

- ▶ **System Requirements(P. 15)**
- ▶ **Notes and Warnings Regarding Installation(P. 17)**
- ▶ **About the Readme File(P. 18)**

System Requirements

This driver can be used with the following system environments.

Operating Systems

Windows 10/11

Windows Server 2012/2012 R2/2016/2019/2022

For server-based computing environments:

Operating systems in a server environment:

Windows Server 2012/2012 R2/2016/2019/2022

Server components:

Citrix Virtual Apps and Desktops 7 1912(LTSR)/2203(LTSR)/2206/2209/2212

VMware vSphere 6.7/7.0/8.0

Microsoft Application Virtualization (App-V)

Remote Desktop Service on Windows Server 2012 R2/2016/2019/2022

Operating systems for a clustering server:

Windows Server 2012/2012 R2/2016/2019/2022

Computer

A computer that runs any of the above operating system software properly.



NOTE

- For the support status of the newest operating systems and service packs, check the Canon web site (<https://global.canon/>).
- The ARM architecture is not supported.

Combinations of Driver and Operating System Display Languages

Depending on the combination of supported driver languages and the display language of the operating system, correct operation may not be guaranteed. It is recommended that you install with the language selected by default when the installer starts.

Supported Driver Languages

For the UFR II/LIPSLX/PCL6/PS3 driver

English / Arabic / Basque / Catalan / Chinese (Simplified) / Chinese (Traditional) / Czech / Danish / Dutch / Finnish / French / German / Hebrew / Hungarian / Italian / Japanese * / Korean / Malay / Norwegian / Polish / Portuguese / Russian / Slovak / Spanish / Swedish / Thai / Turkish / Ukrainian / Vietnamese

* The PCL6 driver is not supported.

For the LIPS4 driver

English / Japanese

Scope of Guaranteed Operation

	Language of operating system included in supported driver languages	Language of operating system not included in supported driver languages
Installed with language matching the operating system	Guaranteed	--
Installed with language not matching the operating system	Guaranteed* ¹	Not guaranteed* ²
Changed to language not matching the operating system after installation	Guaranteed* ¹	Not guaranteed* ²

*1 The layout may be broken or the driver may not be displayed correctly.

*2 Operation is only guaranteed when installed with English. However, the layout may be broken or the driver may not be displayed correctly.

Services Required for the Acquire Device Information Function

If you want to use the acquire device information function, you need the following services and environments.

Operating System Services

- Remote Procedure (RPC)
- TCP/IP NetBIOS Helper Service
- Workstation

All the above services must be installed in the operating system. A setting other than disabled must be selected for the [Startup type] setting of each service.

Protocols

UDP or TCP (IPv4 or IPv6)

Supported Device Connection Configurations

When connected to a network: TCP/IP

When connected locally: USB *

* May not be supported, depending on the driver, device, and architecture of the computer you are using.

Notes and Warnings Regarding Installation

Take care of the following items when installing.

- If a screen requiring you to allow changes to the computer is displayed, allow the changes.
- If a Windows Security screen indicating that the publisher of the driver cannot be verified is displayed, allow installation.
- When acquiring driver information using the Canon Driver Information Assist Service, if a warning regarding removing Windows Firewall blocking is displayed, remove the block.
- If you use the installer to install a driver, you can update existing drivers at the same time that you install the new driver.

About the Readme File

Restrictions and precautions regarding installing drivers or using drivers are included in the Readme file.

The Readme file is stored under the following name within the package folder of the driver.

Readme_en-US.hta

Also, if you are installing using the installer, you can refer to the Readme in the screen for selecting [Printer Setup].

Installation Using the Installer

- ▶ **Installer Types(P. 20)**
- ▶ **Installing by Discovering Devices on a Network(P. 22)**
- ▶ **Installing by Specifying a Port or IP Address(P. 27)**
- ▶ **Installing Using a USB Connection(P. 35)**
- ▶ **Installing a Driver Using Master Setup(P. 39)**

Installer Types

The installer that starts depends on the target device to install and how the installer was obtained.

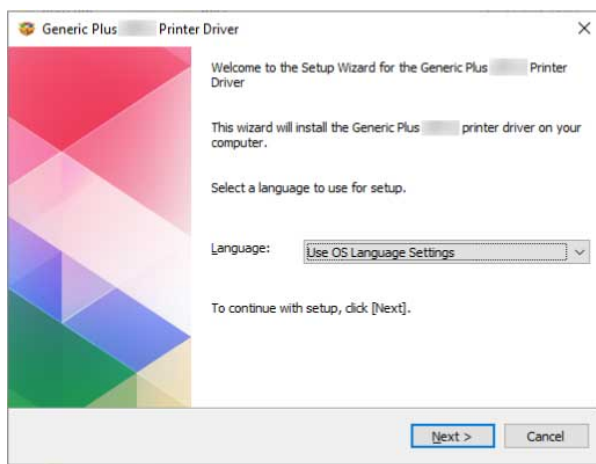
For information on the suitable installer for a device, see the notice included with the device.

Either an integrated installer or Master Setup is used, depending on the device.

There are multiple methods for installing a device, which depend on the type of installer and the connection method and environment of the device. Select the appropriate procedure to perform the installation process.

Driver-Specific Installer

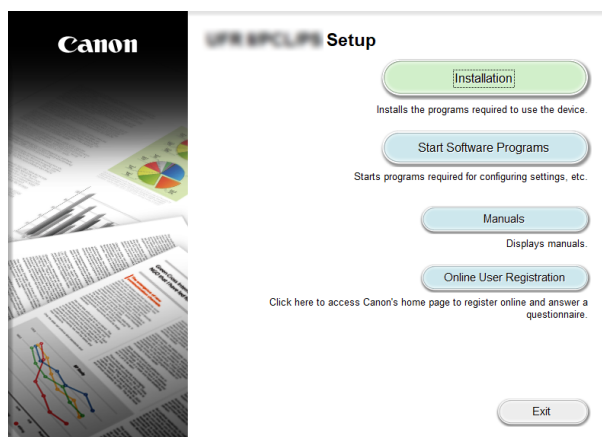
An installer provided for one driver. Installs a single driver.



- Obtained from : Supplied CD-ROM, or downloaded from the website indicated in the notice included with the device
- Executable name : [Setup.exe]

Integrated Installer

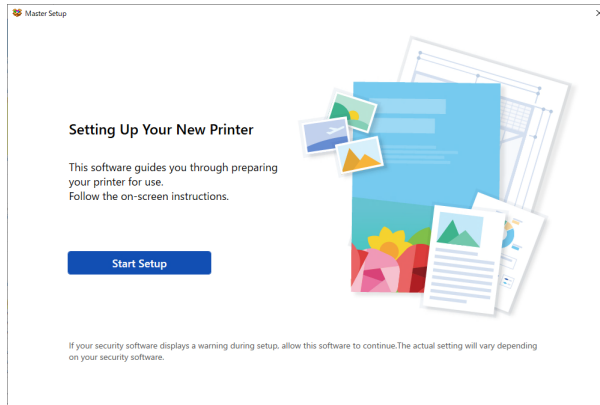
An installer that installs multiple drivers.



- Obtained from : Supplied CD-ROM
- Executable name : [MInst.exe]

Master Setup

An installer used for installing some target devices.



- Obtained from : Downloaded from the website indicated in the notice included with the device
- Executable name : [Msetup4.exe]

Installation Procedure

When using a driver-specific installer or integrated installer

- ▶ Installing by Discovering Devices on a Network(P. 22)
- ▶ Installing by Specifying a Port or IP Address(P. 27)
- ▶ Installing Using a USB Connection(P. 35)

When using Master Setup

- ▶ Installing a Driver Using Master Setup(P. 39)

Installing by Discovering Devices on a Network

You can search for devices on TCP/IP networks when installing the driver.

During installation, the configuration profile and device functions corresponding to the printer model are automatically set. You can also change or import a configuration profile if necessary.



NOTE

- For network environments other than TCP/IP, refer to the procedure for installing by specifying a port or IP address.
- If you do not know the network environment you are using, check with your network administrator.

Prerequisites

- **System Requirements(P. 15)**
- Enabling settings for both [Use WSD Printing] and [Multicast Discovery Settings] at the device (for network environments that use WSD)
- Page description language selection (Plug & Play) function setting of the device
Set [PDL Selection (Plug and Play)] at the device to match the driver you are using. For details about the setting method, refer to the manual of the device.
- The device is one that is on the same subnet as the computer you are using
- **Notes and Warnings Regarding Installation(P. 17)**
- When starting the computer, log on as a user with administrator privileges.
- Display the [Desktop] screen (when using Windows Server 2012/Server 2012 R2).

Procedures

1 Start the installer.

If you are using an installer downloaded from the web site:

Double-click the downloaded file to decompress it. If the installer does not start automatically after it is decompressed, double-click [Setup.exe].

If you are using the accompanying CD-ROM:

(1) Set the CD-ROM in the computer.

If the CD-ROM menu is not displayed, click the subsequent "Open details."

Start the installer by following the procedure below.

- If a message prompting you to insert a CD-ROM is displayed or if Windows Explorer is displayed: Execute [MInst.exe].
- If nothing is displayed: Double-click the CD-ROM icon.
- If the above [MInst.exe] does not exist: Execute [Setup.exe] in the driver folder of the CD-ROM.

If you executed [Setup.exe], proceed to step **2.(P. 23)**

(2) If the language selection screen is displayed, select a language → click [OK].

(3) Click [Installation] from the menu screen.

(4) If the [Select the Type of Connection] screen is displayed, select [Network Connection] → click [Next].

(5) In the displayed screen, confirm that the driver(s) to be installed have been selected → click [Install].

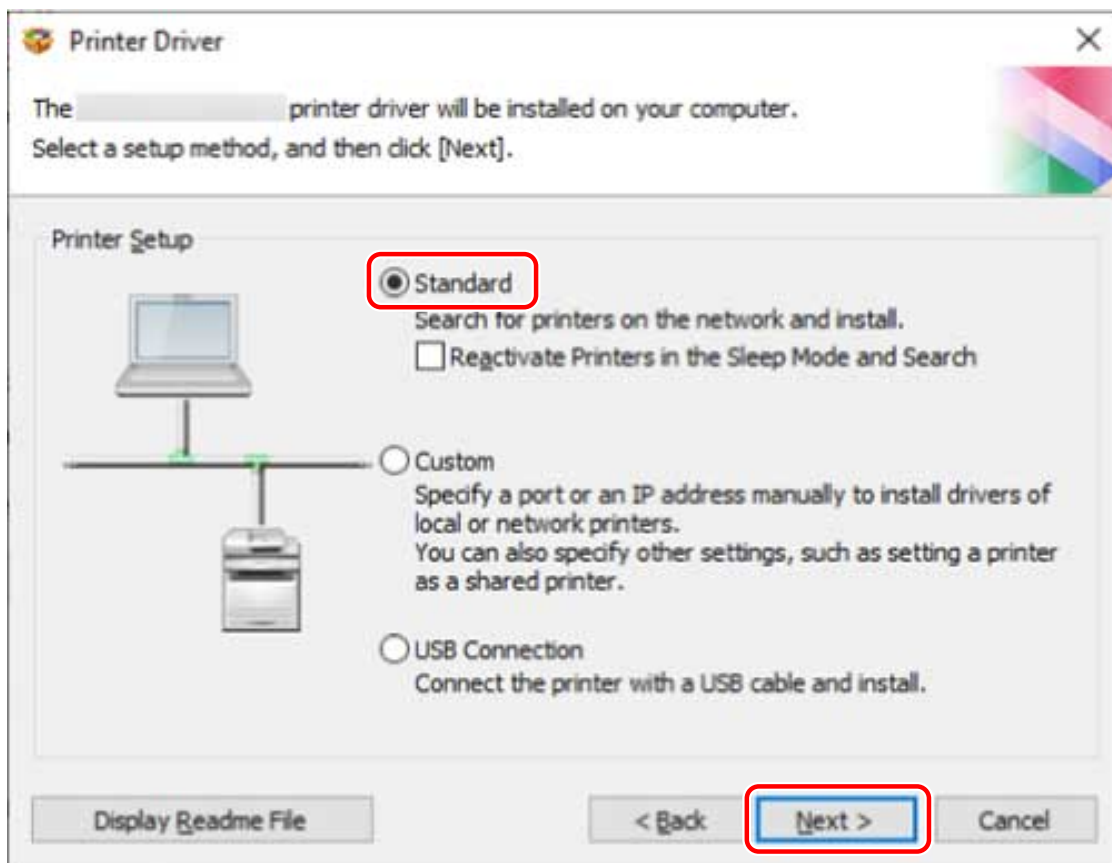
(6) Confirm the content of the CANON SOFTWARE LICENSE AGREEMENT → click [Yes].

2 Select a language → click [Next].

3 When the CANON SOFTWARE LICENSE AGREEMENT is displayed, confirm the content → click [Yes].

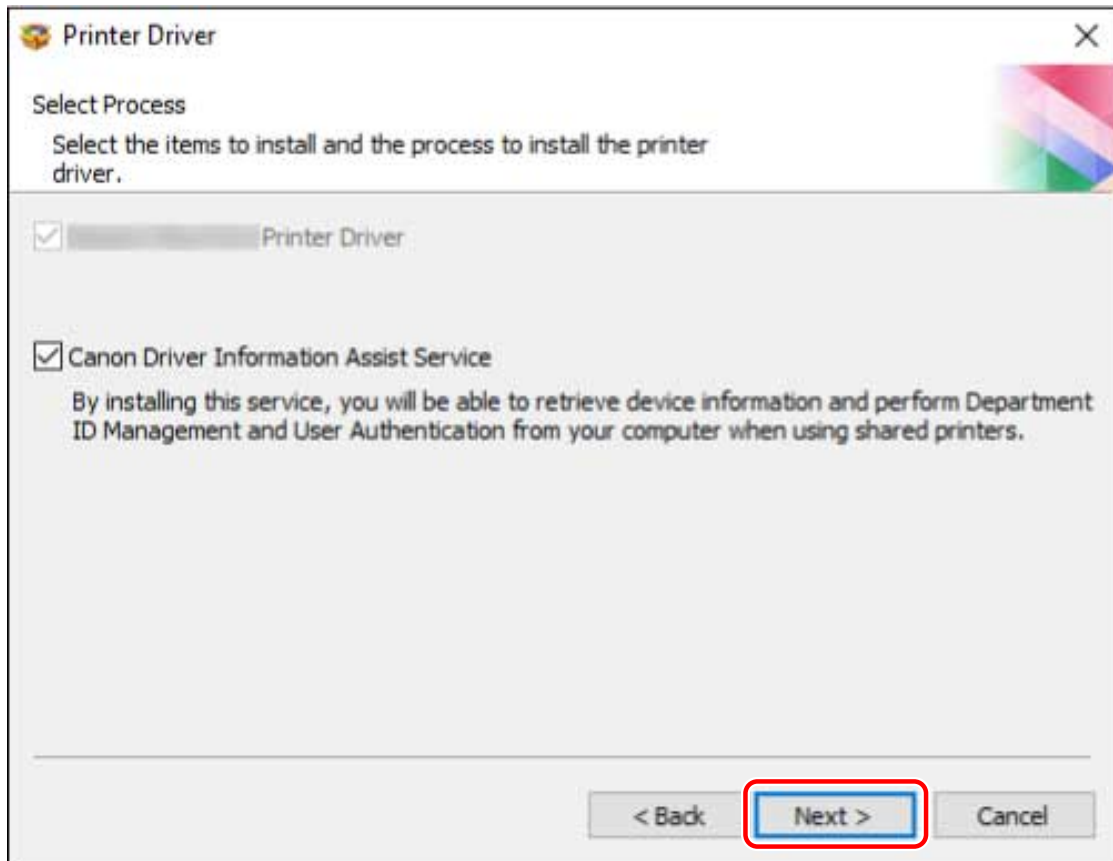
4 Select [Standard] → click [Next].

[Reactivate Printers in the Sleep Mode and Search]: Select this when you want to detect devices on the network that are in sleep mode.



5 Select the required items → click [Next].

[Canon Driver Information Assist Service]: Select this when you want to use the acquire device information function in a print server environment.



6 Select the device to install from [Printer List].

[IPv4 Devices]/[IPv6 Devices]/[WSD Devices]: The search results are displayed on the sheet corresponding to the connection method of the device. Click a sheet to switch to it.

[Search Options]: Change the time for searching for devices. This enables you to extend the time spent searching for devices when devices are not displayed in [Printer List].

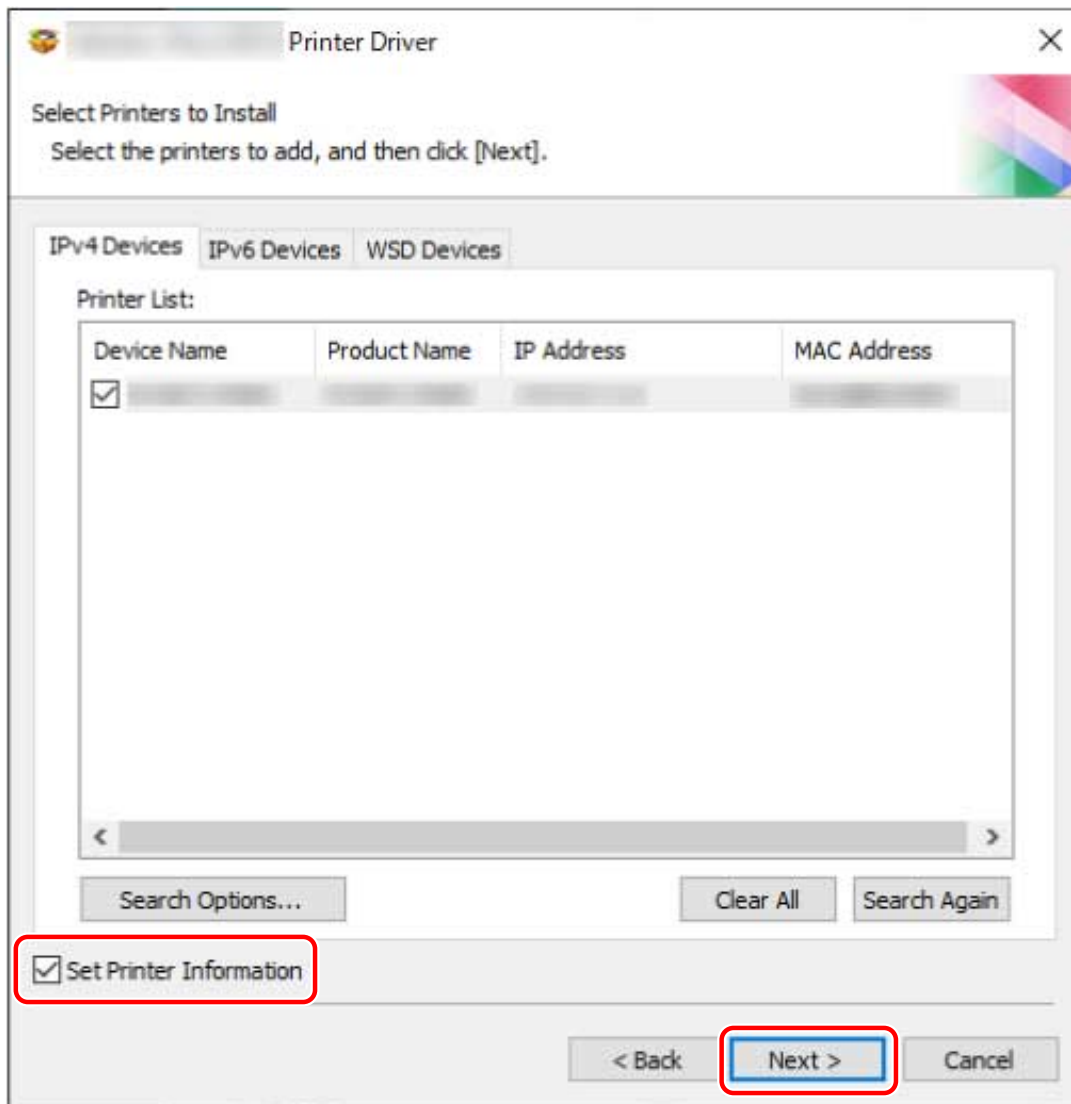
You can enter the SNMP community name specified in the device to display the discovery results on the [IPv4 Devices]/[IPv6 Devices] sheet.

Set this when a name other than the default name "public" is specified in the device.

[Search Again]: Click this if the device is not displayed in [Printer List]. If the device is still not displayed after re-searching, select [Custom] and install by specifying a port or IP address.

7 If you want to change the name of the device, set it as the default device or change the configuration profile, select [Set Printer Information] → click [Next].

Otherwise, click [Next] and proceed to step 9.(P. 26)



8 Change [Printer Name] → click [Next].

[Configuration Profile] > [Change]: Click this only when you need to change or import a configuration profile.

Click the subsequent "Open details" and perform the necessary operations.

Select a configuration profile.

When manually selecting a configuration profile:

Select a configuration profile from [Select Config. Profile] → click [OK].

When importing a configuration profile:

Click [Import] → select a configuration profile file (*.typ) → click [OK].

! IMPORTANT

- If the device is connected to the computer you are using, under normal circumstances, set the installer so that the configuration profile is automatically selected. If the computer cannot be connected to the device and device information cannot be retrieved, or if it is necessary to customize the configuration profile, manually select the configuration profile or import an exported profile.

[Create a shortcut on the desktop for Remote UI]: Creates a shortcut to the Remote UI of the device on the desktop.

To update the IP address of the device set in the shortcut after installing the driver, or delete the shortcut, do so manually.

[Set as Default]: Select this to set the device as the device that is normally used.

[Use as Shared Printer]: Select this if you want to share the device.

9 Check [Printer List for Driver Installation] → click [Start].

[Select Printers to Update]: Click this when there are printers you do not need to update.
Proceed with the installation according to the instructions on the screen.

10 Click [Restart] or [Exit].

If device information cannot be acquired during installation, set the device information before printing. You can also change or import a configuration profile while setting the device information.

For details about how to set the device information, refer to the driver help.

Related Topics

- ▶ Installing by Specifying a Port or IP Address(P. 27)
- ▶ Installing as a Print Server(P. 54)
- ▶ Updating the Driver(P. 47)
- ▶ How to Refer to the Help(P. 67)

Installing by Specifying a Port or IP Address

You can manually specify the port or IP address to use for network connected or locally connected devices and install the driver. Install according to this procedure when you cannot discover a device on the network or when unique settings are required.

As well as using an existing port, you can add a standard TCP/IP port or a network printer port.

If the device is connected during installation, a configuration profile corresponding to the printer model is set. You can also change or import the configuration profile if necessary.

A device is installed for each applied configuration profile. You can also change the number of devices during installation to simultaneously install multiple devices to which the same configuration profile is applied.

Prerequisites

- **System Requirements(P. 15)**
- **Notes and Warnings Regarding Installation(P. 17)**
- Confirm the port to be specified.
Specify a standard TCP/IP port or a network printer port. You can specify an already registered port. You can select a temporary port ([LPT1] etc.) and set it after installation is complete.
- Confirm the name or IP address of the device (if adding a standard TCP/IP port).
If you are installing by adding a standard TCP/IP port, you need to enter the name and IP address of the device. For the name of the device, use the name by which the device is known on the network. If you do not know the name or IP address of the device, check with your network administrator.
- When starting the computer, log on as a user with administrator privileges.
- Display the [Desktop] screen (when using Windows Server 2012/Server 2012 R2).

Procedures

1 Start the installer.

If you are using an installer downloaded from the web site:

Double-click the downloaded file to decompress it. If the installer does not start automatically after it is decompressed, double-click [Setup.exe].

If you are using the accompanying CD-ROM:

(1) Set the CD-ROM in the computer.

If the CD-ROM menu is not displayed, click the subsequent "Open details."

Start the installer by following the procedure below.

- If a message prompting you to insert a CD-ROM is displayed or if Windows Explorer is displayed: Execute [MInst.exe].
- If nothing is displayed: Double-click the CD-ROM icon.
- If the above [MInst.exe] does not exist: Execute [Setup.exe] in the driver folder of the CD-ROM.

If you executed [Setup.exe], proceed to step **2.(P. 28)**

(2) If the language selection screen is displayed, select a language → click [OK].

(3) Click [Installation] from the menu screen.

(4) If the [Select the Type of Connection] screen is displayed, select [Network Connection] → click [Next].

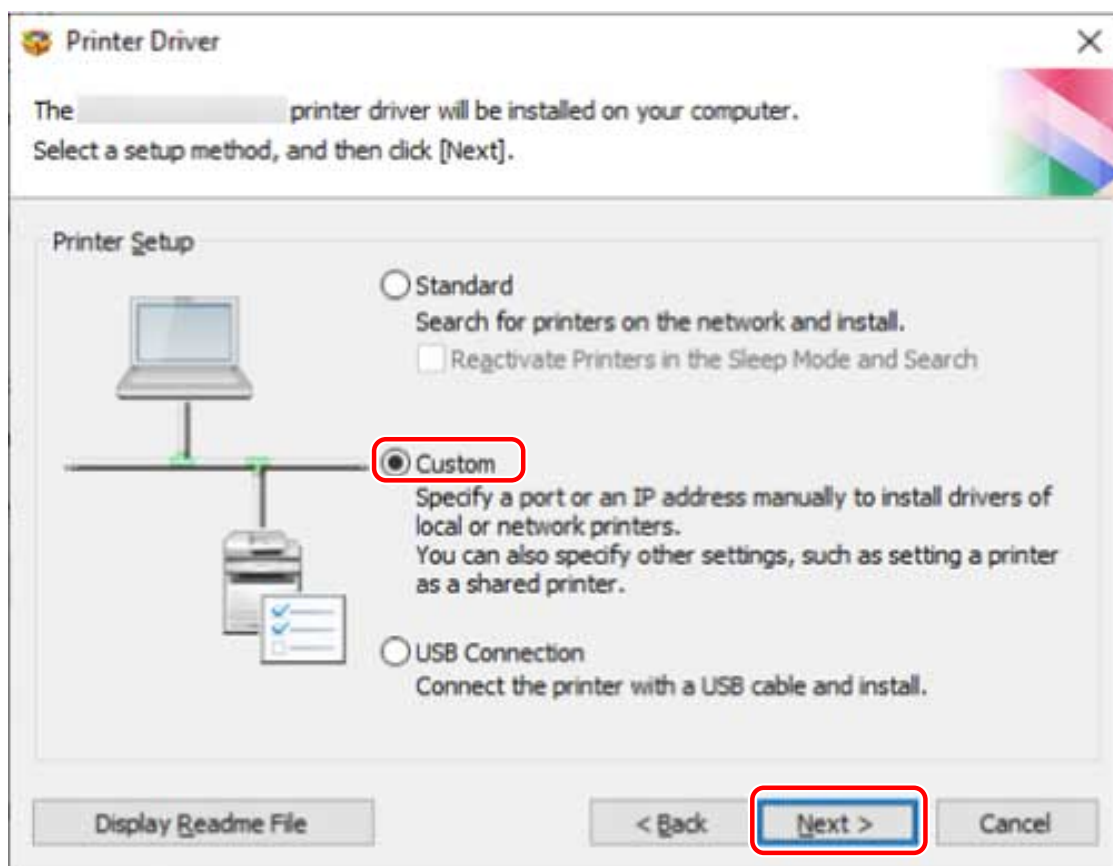
(5) In the displayed screen, confirm that the driver(s) to be installed have been selected → click [Install].

(6) Confirm the content of the CANON SOFTWARE LICENSE AGREEMENT → click [Yes].

2 Select a language → click [Next].

3 When the CANON SOFTWARE LICENSE AGREEMENT is displayed, confirm the content → click [Yes].

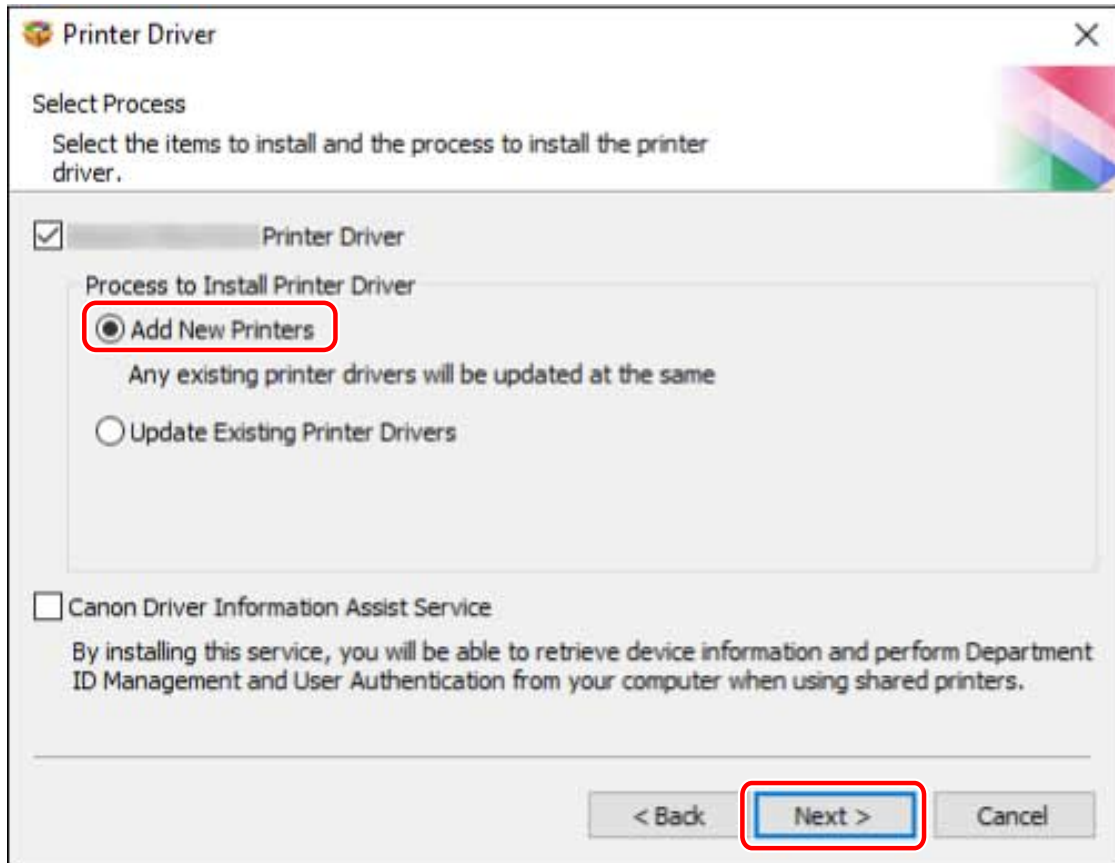
4 Select [Custom] → click [Next].



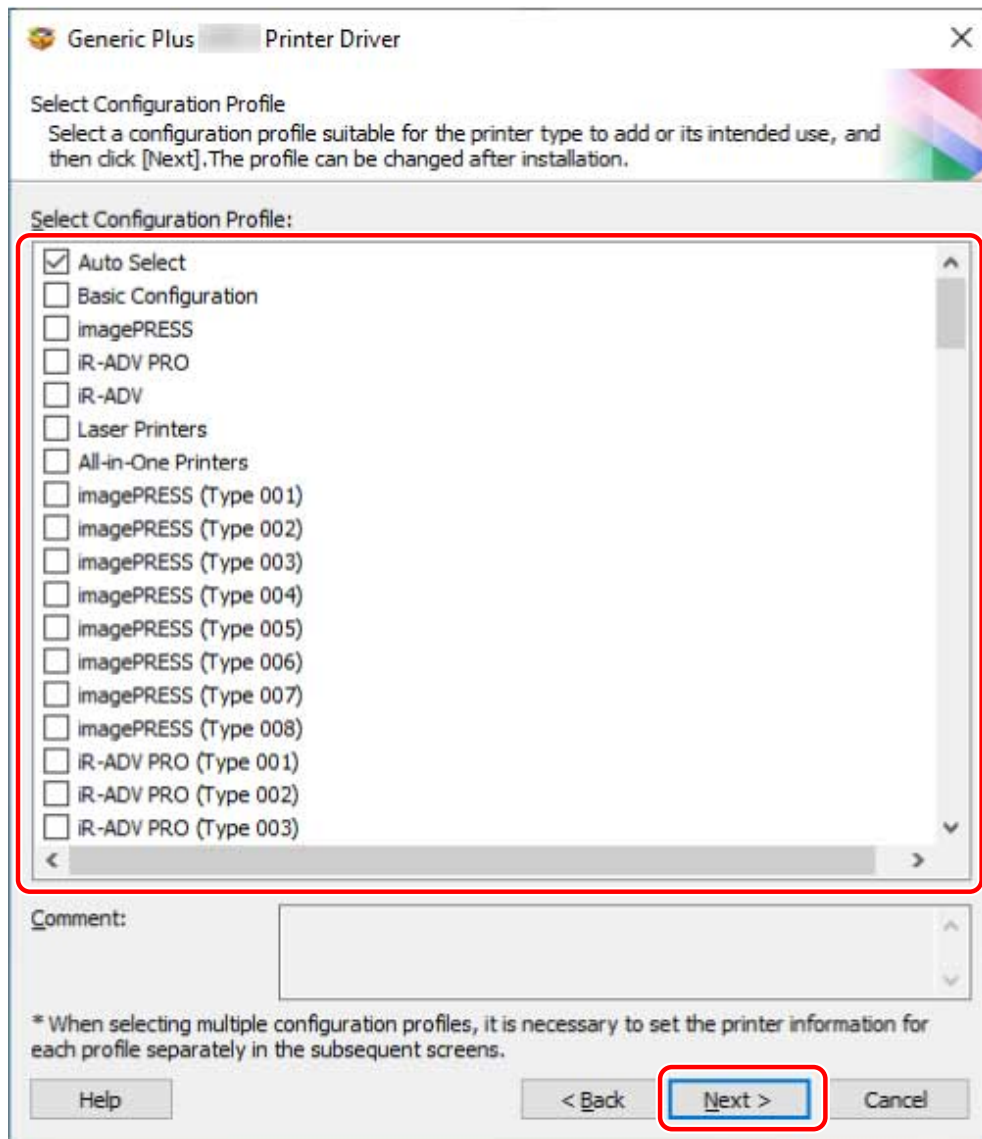
5 If the following screen is displayed, select [Add New Printers] → click [Next].

[Update Existing Printer Drivers]: Select this if you want to update drivers only. When you select this, in the next screen, click [Select Printers to Update] → select the device to update from [Printer List] → click [OK]. Then click [Start] → skip to step **11.(P. 33)**

[Canon Driver Information Assist Service]: Select this when you want to use the acquire device information function in a print server environment.



6 Select a configuration profile → click [Next].



! IMPORTANT

- If the device is connected to the computer you are using, set [Auto Select] under normal circumstances. Select the configuration profile manually only if the computer cannot be connected to the device and device information cannot be retrieved, or if it is necessary to customize the configuration profile.

7 Set the port.

When adding a standard TCP/IP port

- (1) Click [Add Port] → select [Standard TCP/IP Port] from [Port to Add] → click [OK].
- (2) Enter the device name or IP address according to the instructions of the wizard.

[Port Name] is automatically entered. Change the port name if required.

If the [Additional port information required] screen is displayed, click the subsequent "Open details" and perform the necessary operations.

Perform one of the following.

- Return to the previous screen in the wizard → re-enter the information for [Printer Name or IP Address] → click [Next].
- Select [Device Type] > [Standard] > [Canon Network Printing Device with P9100] → click [Next].

Depending on the device you are using, the name you select in [Device Type] > [Standard] may differ from [Canon Network Printing Device with P9100].

When adding a network printer port

- (1) Click [Add Port] → select [Network] from [Port to Add] → click [OK].
- (2) Select the network printer you are using → click [OK].

When using an existing port

Select a port from [Port].

8 Set [Printer Name] if necessary.

[Configuration Profile] > [Change]: Click this only when you need to change or import a configuration profile. Click the subsequent "Open details" and perform the necessary operations.

Select a configuration profile.

When manually selecting a configuration profile:

Select a configuration profile from [Select Config. Profile] → click [OK].

When importing a configuration profile:

Click [Import] → select a configuration profile file (*.typ) → click [OK].

[Create a shortcut on the desktop for Remote UI]: Creates a shortcut to the Remote UI of the device on the desktop. Enter the IP address of the device in [IP Address].

To update the IP address of the device set in the shortcut after installing the driver, or delete the shortcut, do so manually.

[Set as Default]: Select this to set the device as the device that is normally used.

[Use as Shared Printer]: Select this if you want to share the device.

If you added or selected a network printer port, you cannot set [Printer Name] and [Use as Shared Printer].

9 If necessary, change the number of devices to be installed in [Devices] → click [Next].

You can change the number of devices for each configuration profile selected in step 6.(P. 29)

When you click [Next], the change to [Devices] is applied to [Current Printer] and [Number of Printers to Set].

[Current Printer] shows which number device is currently being set.

For an example of the number of devices being applied to [Current Printer]/[Number of Printers to Set], click and refer to the subsequent "Open details."

An example where the following two configuration profiles are selected and the number of devices is changed is shown below.

- Configuration profile A: changing from one device to three devices
- Configuration profile B: one device

(1) For the devices to which configuration profile A is applied, the following values are initially displayed.

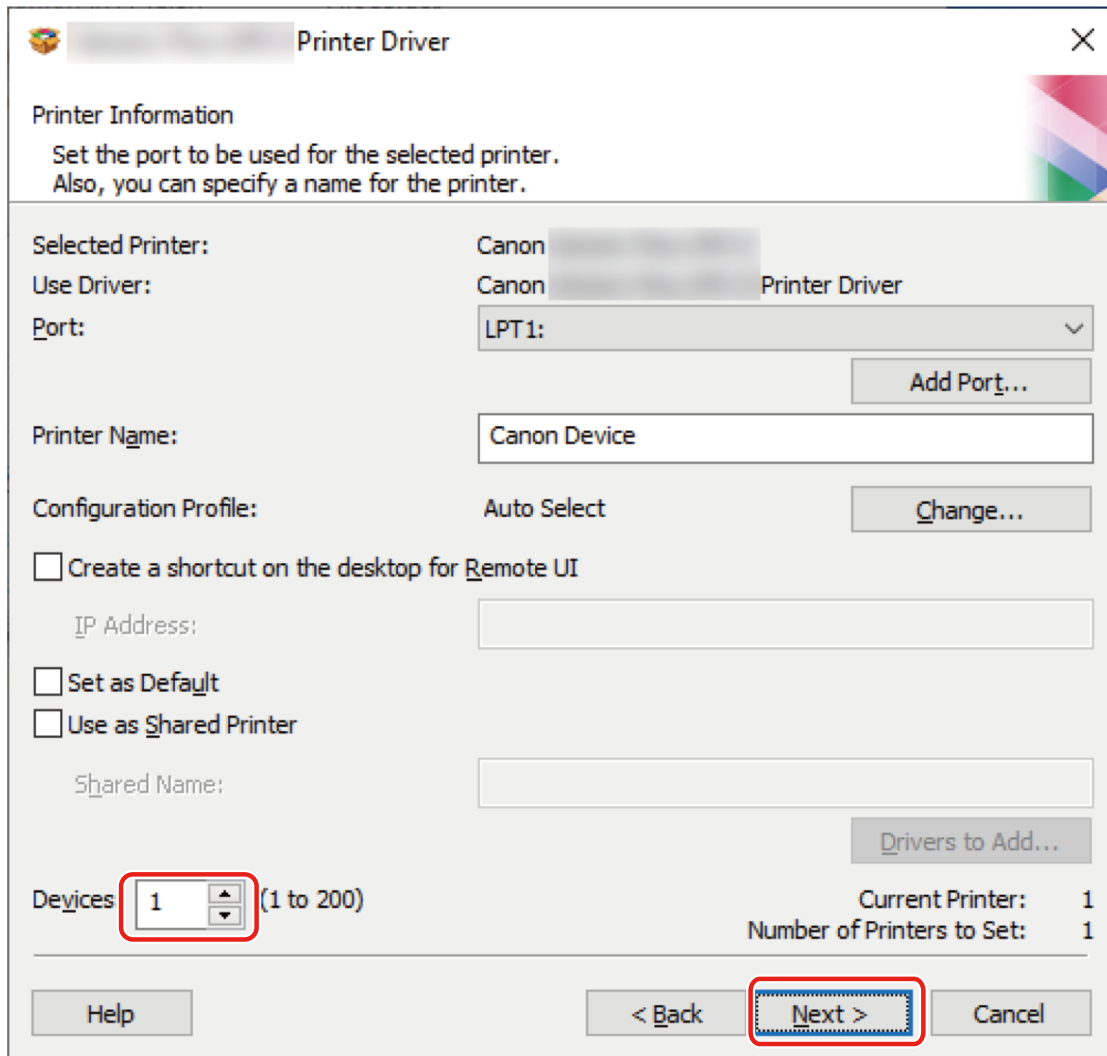
[Current Printer]: 1 / [Number of Printers to Set]: 2

(2) Change [Devices] from 1 to 3 → click [Next].

The information for devices to which configuration profile A is applied is updated as follows.

[Current Printer]: 2 / [Number of Printers to Set]: 4

This indicates that the device currently being set is the second device and that the total number of devices installed is now four (The number of devices to which configuration profile A is applied is three, and the number of devices to which configuration profile B is applied is one).



If multiple configuration profiles were selected in step 6.(P. 29) , or multiple devices were specified in [Devices], the [Printer Information] screen is repeatedly displayed the number of times corresponding to [Number of Printers to Set]. Repeat steps 7.(P. 30) to 9.(P. 32) for each device.

10 Check [Printer List for Driver Installation] → click [Start].

Proceed with the installation according to the instructions on the screen.

11 Click [Restart] or [Exit].

If device information cannot be acquired during installation, set the device information before printing. You can also change or import a configuration profile while setting the device information.

For details about how to set the device information, refer to the driver help.

Related Topics

- ▶ [Installing as a Print Server\(P. 54\)](#)
- ▶ [Changing the Port\(P. 58\)](#)
- ▶ [Updating the Driver\(P. 47\)](#)
- ▶ [How to Refer to the Help\(P. 67\)](#)

Installing Using a USB Connection

You can connect the device and computer with a USB cable and install the driver.

During installation, the configuration profile corresponding to the printer model is automatically set. You can change or import the configuration profile if necessary.

Prerequisites

- **System Requirements(P. 15)**

- Installation of the optional USB interface board (if required with the device you are using)
- Page description language selection (Plug & Play) function setting of the device (if required with the device you are using)

Set [PDL Selection (Plug and Play)] at the device to match the driver you are using. For details about the setting method, refer to the manual of the device.

- **Notes and Warnings Regarding Installation(P. 17)**

- When starting the computer, log on as a user with administrator privileges.
- Display the [Desktop] screen (when using Windows Server 2012/Server 2012 R2).

Procedures

1 Turn off the device.

2 Start the installer.

If you are using an installer downloaded from the web site:

Double-click the downloaded file to decompress it. If the installer does not start automatically after it is decompressed, double-click [Setup.exe].

If you are using the accompanying CD-ROM:

(1) Set the CD-ROM in the computer.

If the CD-ROM menu is not displayed, click the subsequent "Open details."

Start the installer by following the procedure below.

- If a message prompting you to insert a CD-ROM is displayed or if Windows Explorer is displayed: Execute [MInst.exe].
- If nothing is displayed: Double-click the CD-ROM icon.
- If the above [MInst.exe] does not exist: Execute [Setup.exe] in the driver folder of the CD-ROM.

If you executed [Setup.exe], proceed to step **3.(P. 36)**

(2) If the language selection screen is displayed, select a language → click [OK].

(3) Click [Installation] from the menu screen.

(4) If the [Select the Type of Connection] screen is displayed, select [USB Connection] → click [Next].

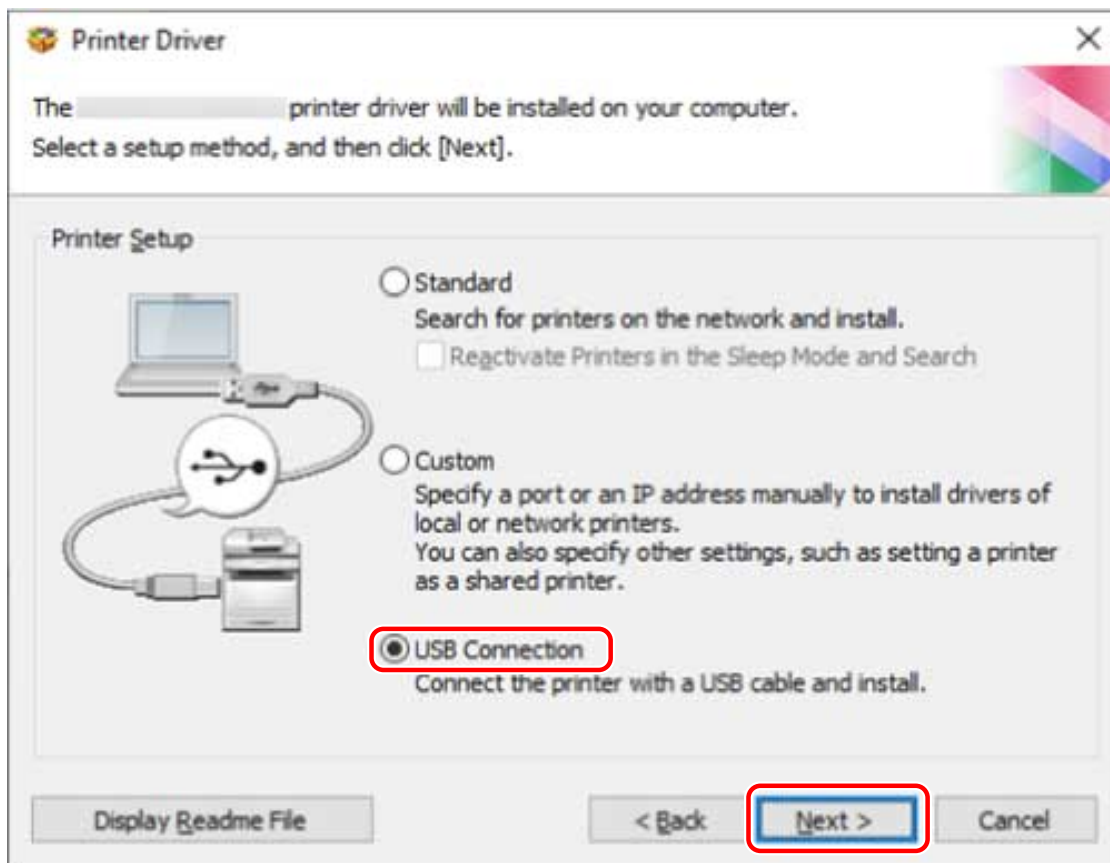
(5) In the displayed screen, confirm that the driver(s) to be installed have been selected → click [Install].

(6) Confirm the content of the CANON SOFTWARE LICENSE AGREEMENT → click [Yes].

3 Select a language → click [Next].

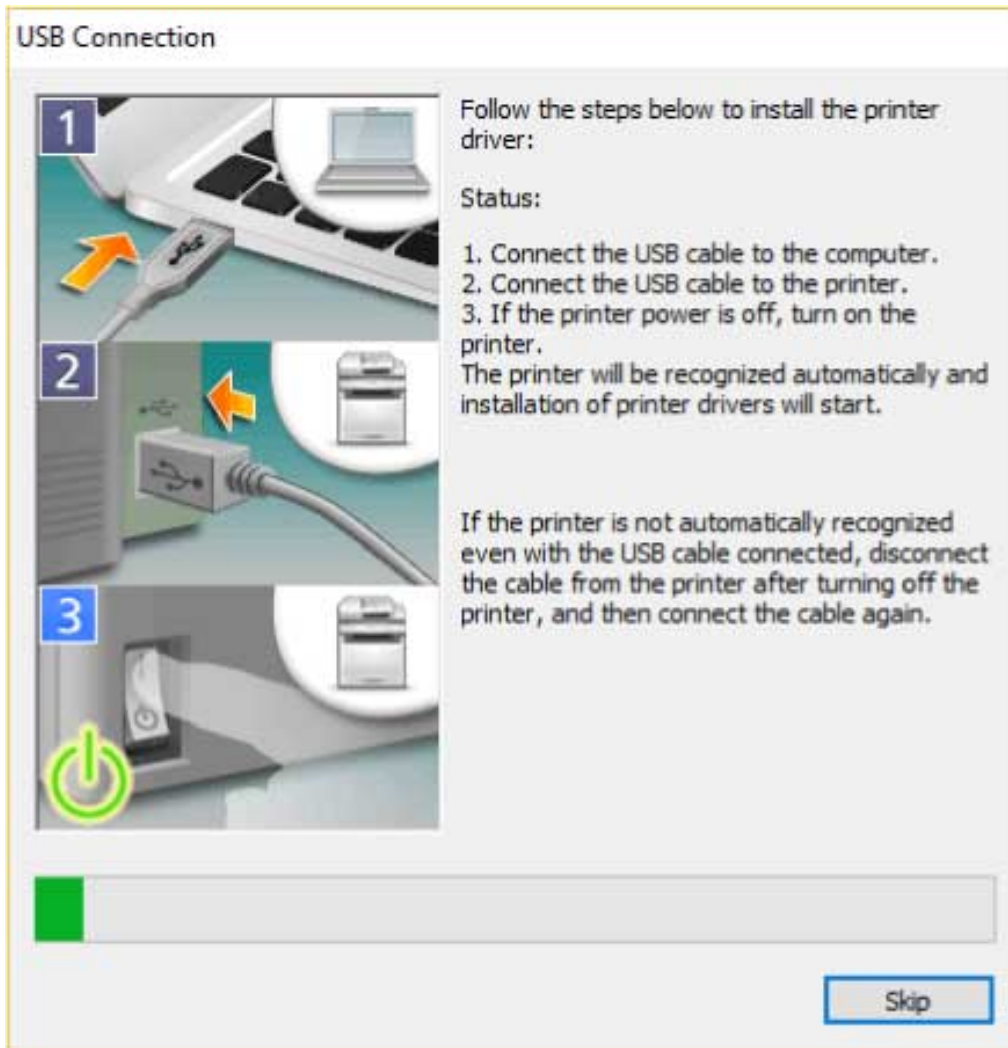
4 When the CANON SOFTWARE LICENSE AGREEMENT is displayed, confirm the content → click [Yes].

5 Select [USB Connection] → click [Next].



6 When the following screen appears, connect the device and computer with a USB cable → turn on the device.

[Skip]: If correctly connected by USB, in this screen you can finish the installation without waiting for automatic completion.



Proceed with the installation according to the instructions on the screen.

If installation fails in the above screen, click the subsequent "Open details" and perform the necessary operations.

Reinstall the driver after performing the following procedure.

(1) Connect the device and computer with a USB cable → turn on the device.

(2) Display [Device Manager].

If displaying from [Start menu]

Right-click [Start] → select [Device Manager] from the menu.

If displaying from [Control Panel]

Display [Hardware and Sound] (or [Hardware]) > [Device Manager].

(3) Right-click the target device in [Other devices] → select the menu for uninstalling the device.

(4) Confirm the device name.

Canon + <model name being used>

7 In the screen indicating the printer information, check whether the configuration profile is suitable for the device.

[Configuration Profile] > [Change]: Click this only when you need to change or import a configuration profile.

Click the subsequent "Open details" and perform the necessary operations.

Select a configuration profile.

When manually selecting a configuration profile:

Select a configuration profile from [Select Config. Profile] → click [OK].

When importing a configuration profile:

Click [Import] → select a configuration profile file (*.typ) → click [OK].



IMPORTANT

- If the device is connected to the computer you are using, under normal circumstances, set the installer so that the configuration profile is automatically selected. If the computer cannot be connected to the device and device information cannot be retrieved, or if it is necessary to customize the configuration profile, manually select the configuration profile or import an exported profile.

8 Click [Restart] or [Exit].

If device information cannot be acquired during installation, set the device information before printing. You can also change or import a configuration profile while setting the device information.

For details about how to set the device information, refer to the driver help.

Related Topics

- ▶ [How to Refer to the Help\(P. 67\)](#)

Installing a Driver Using Master Setup

Master Setup can install the driver for a device without worrying about the connection environment of the target device (whether the device uses a network connection or USB connection).

Install the driver by following the instructions on the screen.



NOTE

- Master Setup does not support the following functions. Use an installer other than Master Setup if these functions are required.
 - Discovery of devices connected via IPv6
 - Identification of multiple devices of the same model connected via USB
 - Shared printer settings
 - Installation of alternate drivers

Prerequisites

- The environment is connected to the Internet
- **System Requirements(P. 15)**
Installation using Master Setup is only supported with Windows 10/11.
- Page description language selection (Plug & Play) function setting of the device (if required with the device you are using)
Set [PDL Selection (Plug and Play)] at the device to match the driver you are using. For details about the setting method, refer to the manual of the device.
- The device is one that is on the same subnet as the computer you are using (when discovering a device connected via a network)
- **Notes and Warnings Regarding Installation(P. 17)**
- When starting the computer, log on as a user with administrator privileges.

Procedures

1 Start the installer.

Extract the downloaded file, and double-click [Msetup4.exe].

If the combination of selected language and region is not supported by the driver, the driver is installed in the language set for Windows.

2 Proceed with the installation according to the instructions on the screen.

3 Click [Finish], [Restart Now], or [Later].

A shortcut to the online manual is created on your desktop.

If device information cannot be acquired during installation, set the device information before printing. You can also change or import a configuration profile while setting the device information.

For details about how to set the device information, refer to the driver help.

Related Topics

- ▶ [How to Refer to the Help\(P. 67\)](#)

Installation Without Using the Installer

- ▶ **Installing by Specifying an inf File(P. 42)**
- ▶ **Installing Using a WSD Port(P. 44)**

Installing by Specifying an inf File

You can install a driver by specifying an inf file with the add printer function of Windows. The following explanation will be given with respect to installation with a standard TCP/IP port.

Prerequisites

- **System Requirements(P. 15)**

- Confirm the IP address of the device.
- Prepare the inf file.

Acquire the driver from the Canon web site (<https://global.canon/>) or the accompanying CD-ROM, and prepare the inf file.

The inf file is stored in the [Driver] folder and [etc] folder in the folder of the driver you have acquired.

When updating all drivers installed on your computer

- Use the inf file in the [Driver] folder

When separately installing a new driver without updating the driver already installed on your computer

- Use the inf file in the [etc] folder

- **Notes and Warnings Regarding Installation(P. 17)**

- When starting the computer, log on as a user with administrator privileges.
- Display the [Desktop] screen (when using Windows Server 2012/Server 2012 R2).

Procedures


1 Start the Windows add printer wizard.

If starting from [ Settings] in the Start menu

- (1) Display [Bluetooth & devices] (or [Devices]).
- (2) In [Printers & scanners], click [Add a printer or scanner] > [Add device] (or [Add a printer or scanner]).
- (3) Click [The printer that I want isn't listed] > [Add manually] (or [The printer that I want isn't listed]).

If starting from [Control Panel]

- (1) Display [Devices and Printers].

If the [Settings] screen is displayed, refer to the above procedure for starting the wizard from [ Settings].

- (2) Click [Add a printer].

- (3) When the screen for selecting a device is displayed, click the link indicating that the printer is not in the list.

2 Select local printer addition and proceed to the next screen.

3 Select [Create a new port] → select [Standard TCP/IP Port] from [Type of port] → click [Next].

4 Enter the IP address of the device in [Hostname or IP address] → proceed according to the instructions on the screen.

If the device cannot be found, it may be recognized as an unknown device. If so, click the subsequent "Open details."

(1) Display [Device Manager].

If displaying from [ (the Start menu)]

Right-click [] → select [Device Manager] from the menu.

If displaying from [Control Panel]

Display [Hardware and Sound] (or [Hardware]) > [Device Manager].

(2) Select and right-click [Other devices] > [Unknown device] → select the menu for updating the driver.

(3) In the driver software update wizard, click [Browse my computer for drivers] → click [Let me pick from a list of available drivers on my computer].

(4) Select [Printers] from [Common hardware types] → click [Next].

5 In the [Install the printer driver] screen, click [Have Disk].

6 Click [Browse] → select the prepared inf file.

7 Select the device to use from [Printers] → click [Next].

8 Install the driver according to the instructions on the screen → click [Finish].

During installation, either one of [Basic Configuration] and [Basic Configuration (Compatible)] configuration profiles will be set.

Set the device information after installation is complete. To enable the functions of the device, change to the configuration profile that matches the device you are using and set the device function and option information.

For details about how to set the device information, refer to the driver help.

Related Topics

- ▶ **Changing the Port(P. 58)**
- ▶ **How to Refer to the Help(P. 67)**

Installing Using a WSD Port

This explains the procedure for searching for devices on a network from the Windows printer list using a WSD (Web Services on Devices) port, and installing the driver.




IMPORTANT

- If you want to install multiple drivers, share a standard TCP/IP port. You cannot install multiple drivers using a WSD port.

Prerequisites

- **System Requirements(P. 15)**
- Page description language selection (Plug & Play) function setting of the device
Set [PDL Selection (Plug and Play)] at the device to match the driver you are using. For details about the setting method, refer to the manual of the device.
- **Installing by Specifying a Port or IP Address(P. 27)**
Specify a temporary port ([LPT1] etc.) and install the driver.


Procedures

To install from [ Settings] in the Start menu

- 1** Display [Bluetooth & devices] (or [Devices]).
- 2** In [Printers & scanners], click [Add a printer or scanner] > [Add device] (or [Add a printer or scanner]).
- 3** Click [Add device] for the target device.

To install from [Control Panel]

- 1** Display [Devices and Printers].

If the [Settings] screen is displayed, refer to the above procedure for installing from [ Settings].

- 2** Click [Add a device].

3 Select the target device → click [Next].

During installation, either one of [Basic Configuration] and [Basic Configuration (Compatible)] configuration profiles will be set.

Set the device information after installation is complete. To enable the functions of the device, change to the configuration profile that matches the device you are using and set the device function and option information.

For details about how to set the device information, refer to the driver help.



NOTE

- If you install using a WSD port, you may not be able to retrieve device information, depending on the connected device.
- After installation using the WSD port is complete, the device added to the printer list of Windows during installation specifying the temporary port is unnecessary.

Select the device to be removed in the printer list of Windows, then select [Remove device] or click [Remove] on the management screen for the device.

Refer to the above procedure for how to display the printer list of Windows.

Related Topics

- ▶ [How to Refer to the Help\(P. 67\)](#)
- ▶ [Cannot discover a device connected via a WSD port\(P. 74\)](#)

Updating/Uninstalling the Driver

This explains the driver updating and uninstalling methods.

- ▶ **Updating the Driver(P. 47)**
- ▶ **Uninstalling the Driver(P. 49)**

Updating the Driver

You can update installed drivers to their newer versions.

It is recommended that you download the latest drivers corresponding to new functions and/or operating systems, and update them.

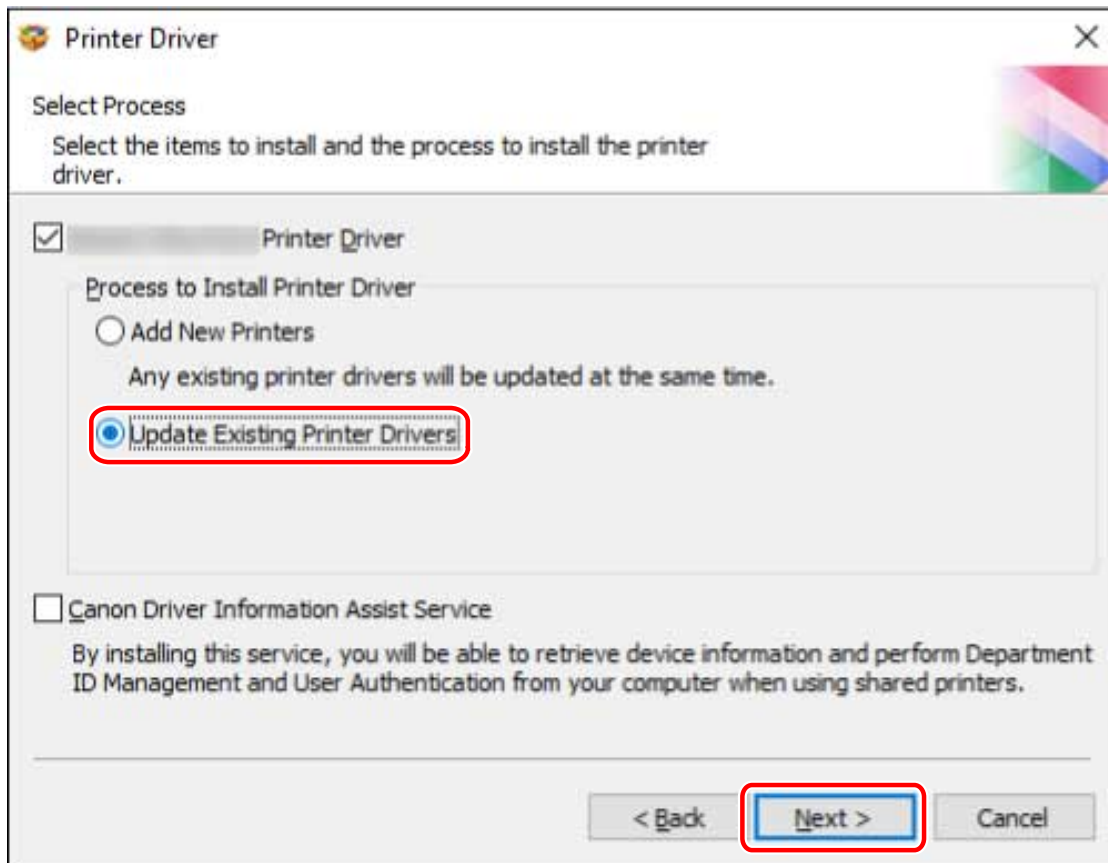
You can update already installed drivers at the same time as installing a driver for a new device, but here the procedure for updating installed drivers only is explained.

Prerequisites

- Acquire the installer
You can download the update installer from the Canon web site (<https://global.canon/>).
- Connect the device by USB cable and turn the power on (when updating a driver installed with a USB connection).
- When starting the computer, log on as a user with administrator privileges.
- Display the [Desktop] screen (when using Windows Server 2012/Server 2012 R2).

Procedures

- 1 Start the installer** → proceed according to the instructions on the screen.
- 2 Select [Custom] for [Printer Setup]** → click [Next].
- 3 Select [Update Existing Printer Drivers]** → click [Next].



4 Check [Printer List for Driver Installation] → click [Start].

If there are devices whose drivers you do not intend to update, click [Select Printers to Update] → deselect the devices from [Printer List] → click [OK].

5 Click [Exit].

Restart your computer when a message is displayed prompting you to do so.

When updating a driver on a print server, update the drivers on clients as well, referring to the procedure for setting computers as shared printer clients.

Related Topics

- ▶ [Installing by Discovering Devices on a Network\(P. 22\)](#)
- ▶ [Installing by Specifying a Port or IP Address\(P. 27\)](#)
- ▶ [Installing Using a USB Connection\(P. 35\)](#)
- ▶ [Setting up Clients of a Shared Printer\(P. 56\)](#)

Uninstalling the Driver

This explains the procedure for uninstalling a driver that is no longer needed. There are two methods: starting the uninstaller from Windows, and using the uninstaller in the accompanying CD-ROM or downloaded driver folder.

Prerequisites

- When starting the computer, log on as a user with administrator privileges.
- Display the [Desktop] screen (when using Windows Server 2012/Server 2012 R2).

Procedures

1 Start the uninstaller of the driver.

- **When using Windows functions**

If starting from [Settings] in the Start menu

- (1) Display [Apps] (or [System]) > [Apps & features].
- (2) Click [:] for the driver you want to uninstall (or select the driver) → click [Uninstall].

If starting from [Control Panel]

- (1) Display [Programs] > [Uninstall a program].
- (2) Select the driver you want to uninstall → select [Uninstall/Change] from the menu.

- **When using the uninstall file provided with the driver**

Double-click one of the following files.

When using a file in an installed driver folder

Use [UNINSTALL.exe] corresponding to the driver in the following folder.

<install folder>\Canon\PrnUninstall

When using the file in the accompanying CD-ROM or downloaded driver folder

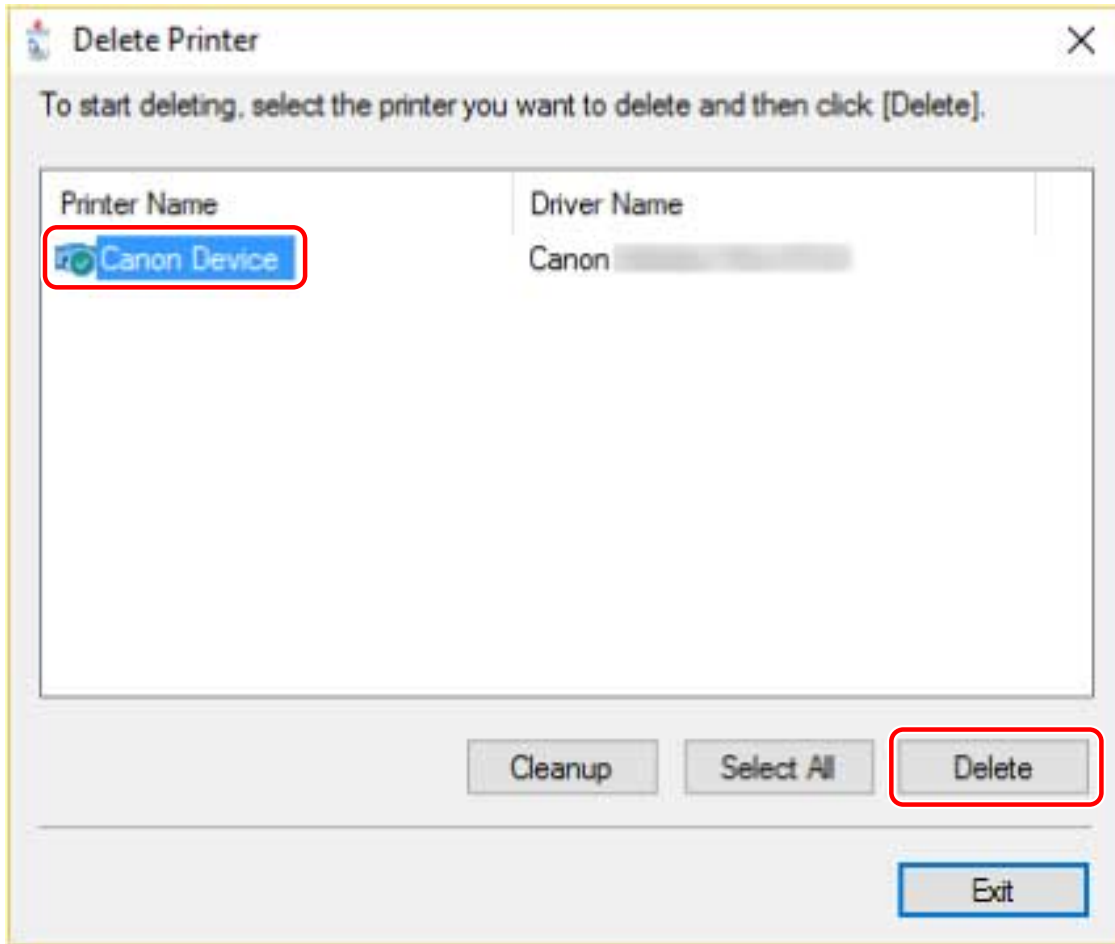
Use the following file in the folder of the driver you have acquired.

misc\UNINSTALL.exe

An uninstall file is not provided if Master Setup is used for installation. In that case, use the Windows function to uninstall the driver.

2 Select the name of the device you want to uninstall → click [Delete].

[Cleanup]: Click this to simultaneously delete all files and registry information relating to all of the drivers displayed in the list, not just the selected driver. Click [Delete] to perform a normal uninstallation of the driver.



3 In the screen for confirming whether to delete the printer, click [Yes].

A confirmation message asking whether you want to delete the driver package as well may be displayed.

4 In the [Delete Printer] screen, click [Exit].

Changing Settings to Match the Usage Environment

Changing Settings to Match the Usage Environment	52
Using a Shared Printer	53
Installing as a Print Server	54
Setting up Clients of a Shared Printer	56
Changing the Port	58
Installing the PPD File (PS3)	62

Changing Settings to Match the Usage Environment

This explains shared printer settings, switching ports, and installing the PPD files.

- ▶ **Using a Shared Printer(P. 53)**
- ▶ **Changing the Port(P. 58)**
- ▶ **Installing the PPD File (PS3)(P. 62)**

Using a Shared Printer

This explains the setting procedure for sharing a device with computers on the same network.

- ▶ **Installing as a Print Server(P. 54)**
- ▶ **Setting up Clients of a Shared Printer(P. 56)**

Installing as a Print Server

This explains how to configure the share settings of and install the driver in order to use a computer connected to the device as a print server.



NOTE

- When [Department ID] and [PIN] are set for the department ID management function in the server side print settings, they are not reflected in the client side print settings.

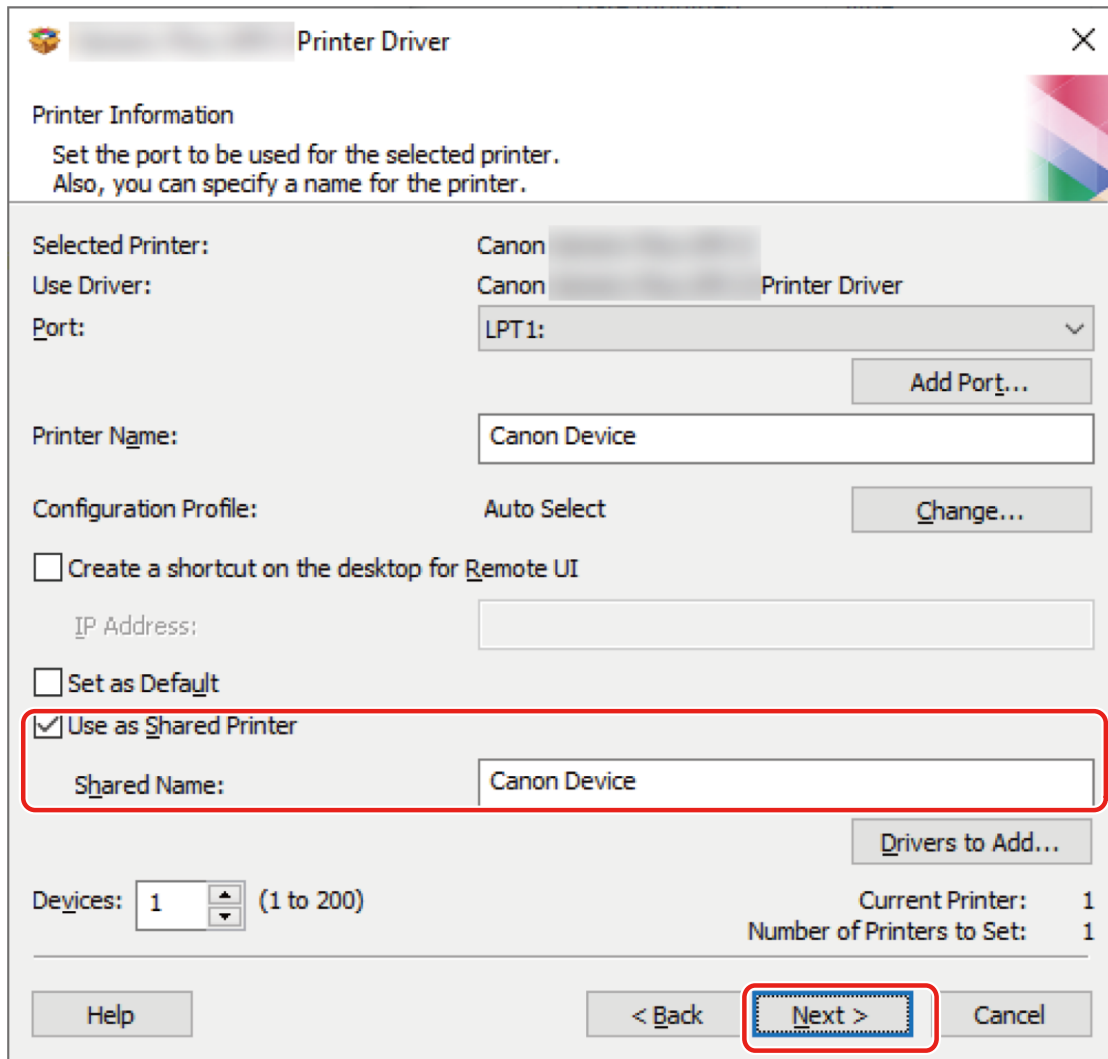
Prerequisites

- When starting the computer, log on as a user with administrator privileges.
- Display the [Desktop] screen (when using Windows Server 2012/Server 2012 R2).

Procedures

- 1 Start the installer → proceed according to the instructions on the screen.**
- 2 If the [Select Process] screen is displayed, select [Add New Printers] and [Canon Driver Information Assist Service] → click [Next].**
- 3 Select the device to install from [Printer List] → click [Next].**
- 4 Select [Use as Shared Printer] → change [Shared Name] if necessary → click [Next].**

If a client computer with an operating system that differs from the print server is connected to a shared printer, click [Drivers to Add] and select an alternate driver to automatically download an alternate driver.



5 Follow the instructions on the screen → click [Exit].

Related Topics

- ◉ Installing by Discovering Devices on a Network(P. 22)
- ◉ Installing by Specifying a Port or IP Address(P. 27)
- ◉ Setting up Clients of a Shared Printer(P. 56)

Setting up Clients of a Shared Printer

This explains the procedure for enabling printing from a client computer (hereafter referred to as "a client") using a print server on the same network.

In environments where Windows Update can be used, it is not necessary to use the installer in order for the newest driver to be installed when selecting a print server.

Prerequisites

- Configure the share settings of the print server driver.
If the types of operating systems on the print server and clients differ, install the drivers for operating systems supported by the clients on the print server.
- When starting the computer, log on as a user with administrator privileges.



NOTE

- If you are configuring the settings of a client in a workgroup environment, the user name and password for logging onto the client must match the user name and password registered in the server.
- The driver settings of the server may not be reflected in the clients. If this happens, the driver version of the clients may be older than that of the print server. Always update the client drivers to the newest version together with print server updates.

Procedures

- 1 Display [Network] in Windows Explorer.**
- 2 Double-click the computer (print server) you have set for print sharing.**
- 3 Double-click the icon of the device for installation.**
- 4 Click [Yes] in the displayed message.**
- 5 Configure the settings according to the instructions in the wizard.**
- 6 Restart the computer after installation is complete.**



NOTE

- When [Department ID] and [PIN] are set for the department ID management function in the server side print settings, they are not reflected in the client side print settings.

Related Topics

- ▶ [Installing as a Print Server\(P. 54\)](#)
- ▶ [Updating the Driver\(P. 47\)](#)

Changing the Port

This explains the procedure for changing the port used by a device connected to a network.

If you temporarily set a port for the device when installing the driver, change it to the correct port by following this procedure.

Here, the method for creating a Raw or LPR port using a standard TCP/IP port is explained.

Prerequisites

- Driver installation
- Confirm the name or IP address of the device (if adding a standard TCP/IP port).
To add a standard TCP/IP port, you need to enter the name or IP address of the device. For the name of the device, use the name by which the device is known on the network. If you do not know the device name or IP address, check with your network administrator.
- Determining the protocol to use
Raw: A protocol that can be used with Windows. It transmits data at a higher speed than LPR.
LPR: The protocol commonly used by TCP/IP.
- When starting the computer, log on as a user with administrator privileges.


Procedures

1 Display the printer properties screen.

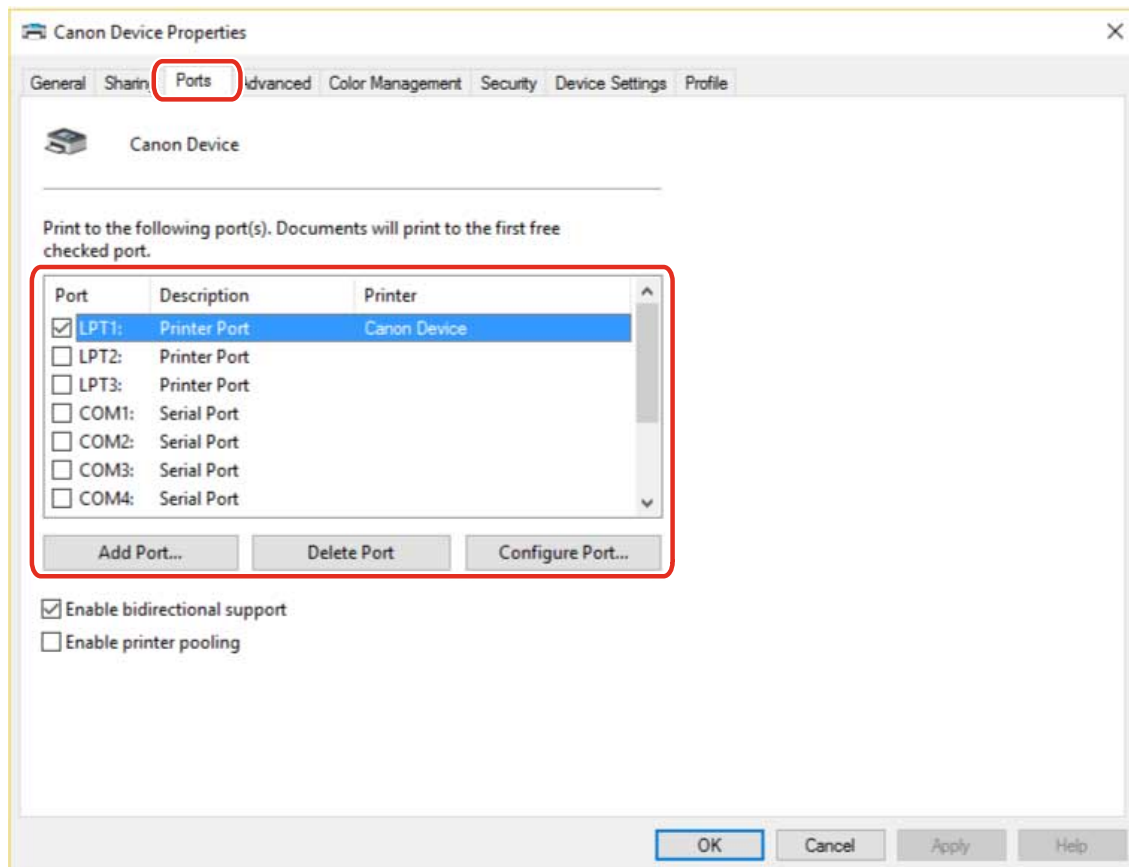
If displaying from [ Settings] in the Start menu

- (1) Display [Bluetooth & devices] (or [Devices]).
- (2) In [Printers & scanners], display the management screen for the device to set.
To display the management screen, click the device or click [Manage] for the corresponding device.
- (3) Click [Printer properties] for the device to set.

If displaying from [Control Panel]

- (1) Display [Devices and Printers].
If the [Settings] screen is displayed, refer to the above procedure for displaying the screen from [ Settings].
- (2) From the printer list, right-click the device to be set → select [Printer properties] from the displayed menu.

2 Display the [Ports] sheet → set the port.



When using an existing port:

Select a port from [Port].

When adding a standard TCP/IP port:

(1) Click [Add Port] → select [Standard TCP/IP Port] from [Available port types] → click [New Port].

(2) Enter the device name or IP address according to the instructions of the wizard.

[Port Name] is automatically entered. Change the port name if required.

If the [Additional port information required] screen is displayed, click the subsequent "Open details" and perform the necessary operations.

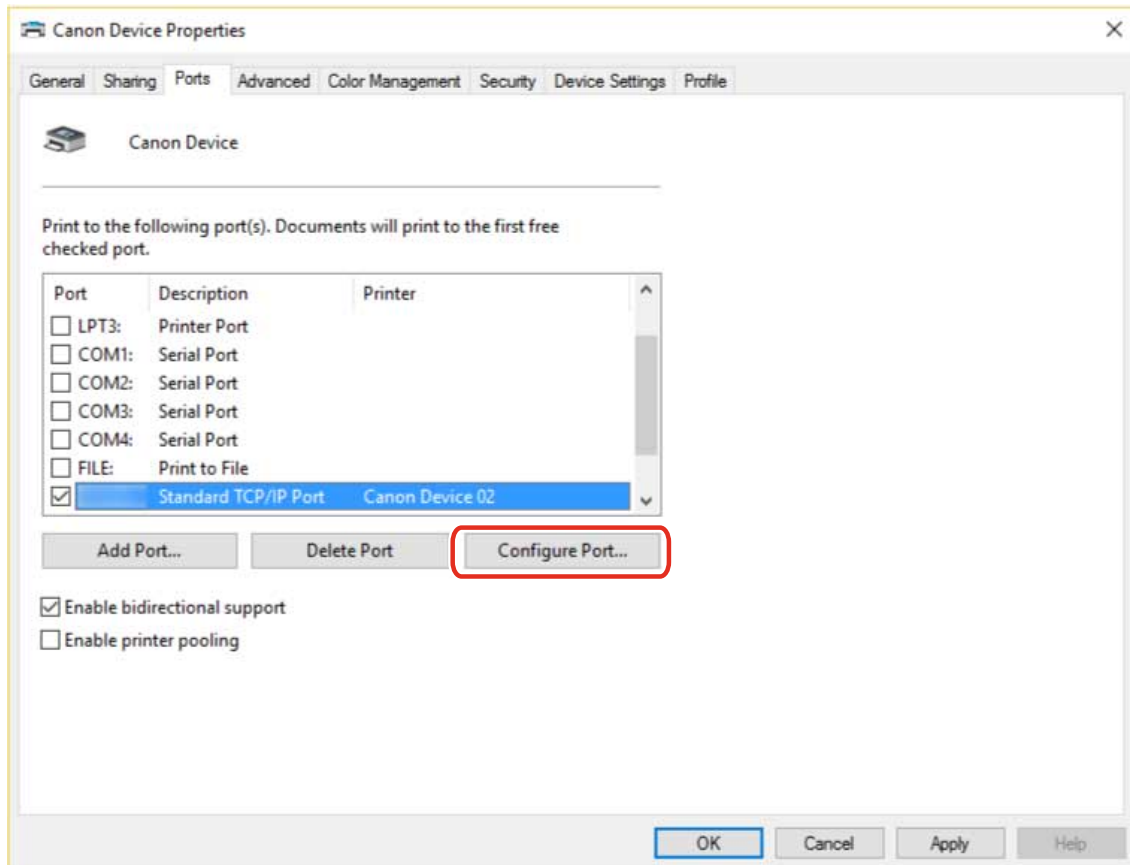
Perform one of the following.

- Return to the previous screen in the wizard → re-enter the information for [Printer Name or IP Address] → click [Next].
- Select [Device Type] > [Standard] > [Canon Network Printing Device with P9100] → click [Next].

Depending on the device you are using, the name you select in [Device Type] > [Standard] may differ from [Canon Network Printing Device with P9100].

(3) Click [Finish] → click [Close] in the [Printer Ports] dialog box.

3 If you want to configure the standard TCP/IP port, click [Configure Port].



4 Configure the port.

When using Raw:

Select [Raw] for [Protocol] → click [OK].

When using LPR:

(1) Select [LPR] for [Protocol] → specify one of the following print queues for [LPR Settings] > [Queue Name].

LP: Outputs according to the spool setting of the device. This is the setting that is normally used.

SPOOL: Always outputs after spooling to the hard disk, regardless of the device settings.

DIRECT: Always outputs without spooling to the hard disk, regardless of the device settings.

(2) Click [OK].

Configure Standard TCP/IP Port Monitor

Port Settings

Port Name:

Printer Name or IP Address:

Protocol

Raw LPR

Raw Settings

Port Number:

LPR Settings

Queue Name:

LPR Byte Counting Enabled

SNMP Status Enabled

Community Name:

SNMP Device Index:

5 Click [Close].

Installing the PPD File (PS3)

This explains the procedure for installing the PPD (PostScript Printer Description) file used by the PS3 driver.

If you print with the driver from an application according to this operation, you can use the functions specific to the device.

Prerequisites

- Acquire the PS3 driver from the Canon web site (<https://global.canon/>) or the accompanying CD-ROM.

Procedures

1 Double-click the file [gpps3.cab] in one of the following folders of the driver.

PS3\32BIT\Driver

PS3\x64\Driver

2 Copy [cns3gp.ppd] into the appropriate folder for the application you want to use.

For the PPD file copy destination, refer to the manual of each application.

Printing

Printing	64
Printing from a Computer	65
How to Refer to the Help	67

Printing

This explains the procedures for basic printing operations. You can check the help for details on how to use the driver.

- ▶ **Printing from a Computer(P. 65)**
- ▶ **How to Refer to the Help(P. 67)**

Printing from a Computer

This explains the basic procedure for printing configuring the printer driver settings.



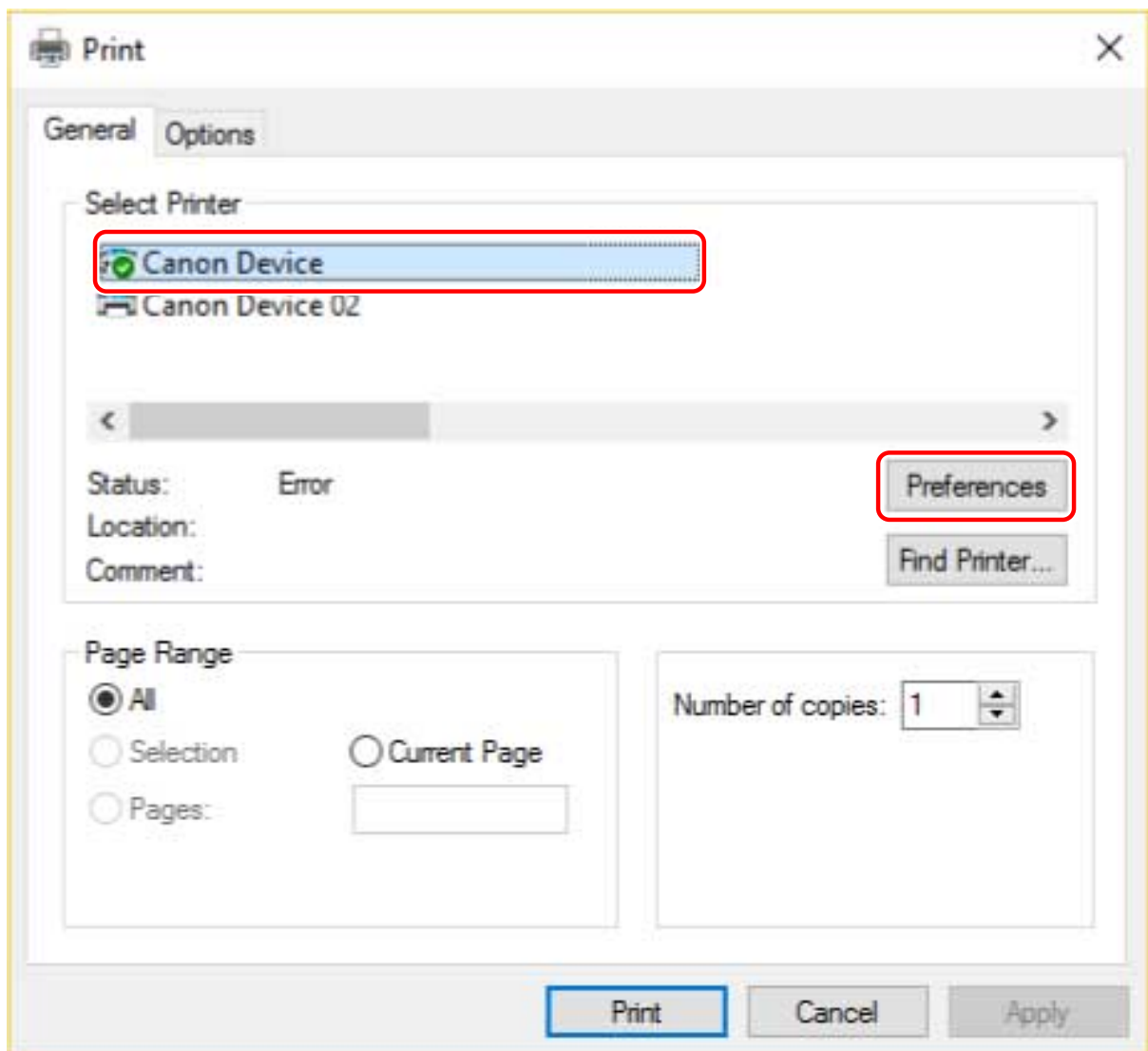
NOTE

- When using a device connected via a WSD port, enable [Use WSD Printing] at the device.

1 Open a document in the application → display the print screen.

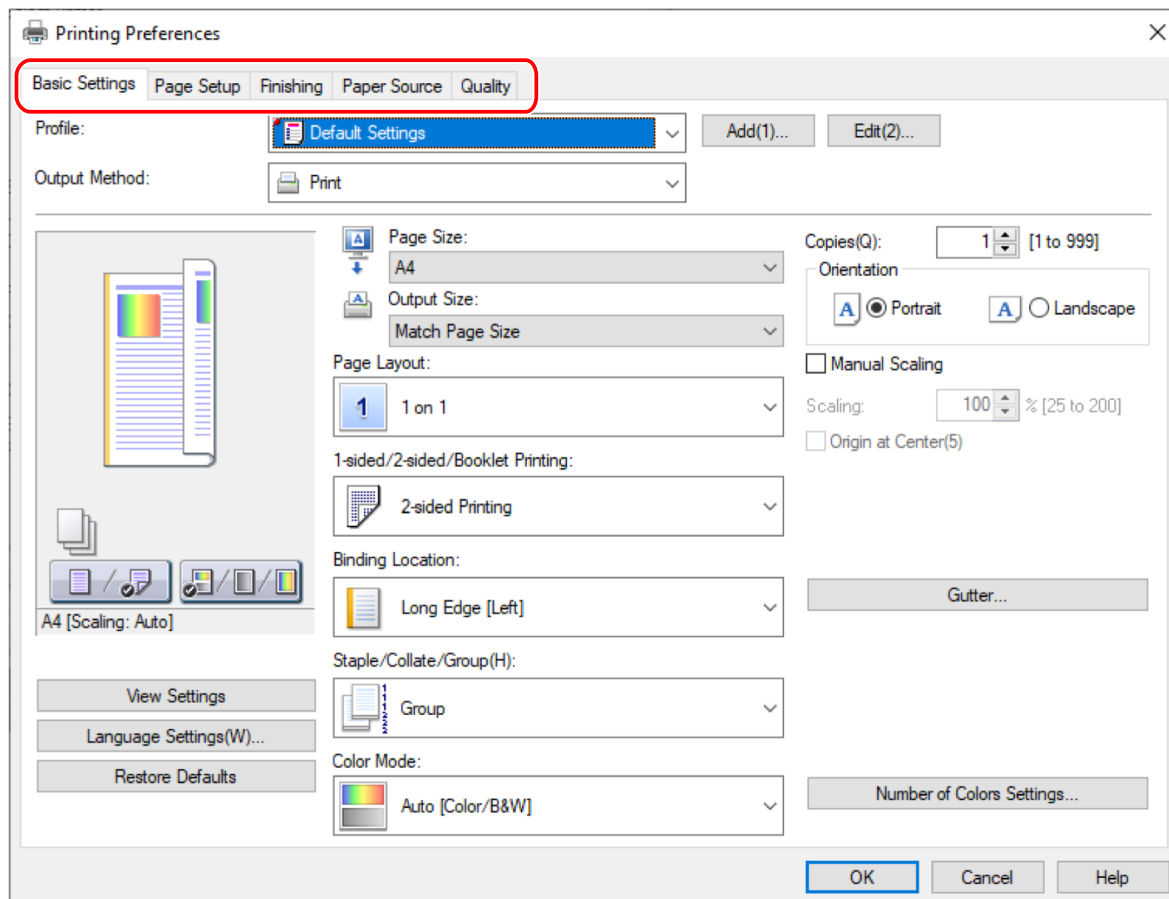
2 Select the device you are using → click [Preferences].

Depending on the application, [Preferences] may be called "Printer properties" or "Properties."



3 In the print settings screen of the driver, set the required items.

If necessary, switch sheets and configure relevant settings.

**NOTE**

- If the function you want to use is not displayed in the print settings screen, configure the print settings after enabling the functions of the device by acquiring the device information etc.

4 Click [OK].

5 In the print screen, click [Print] or [OK].

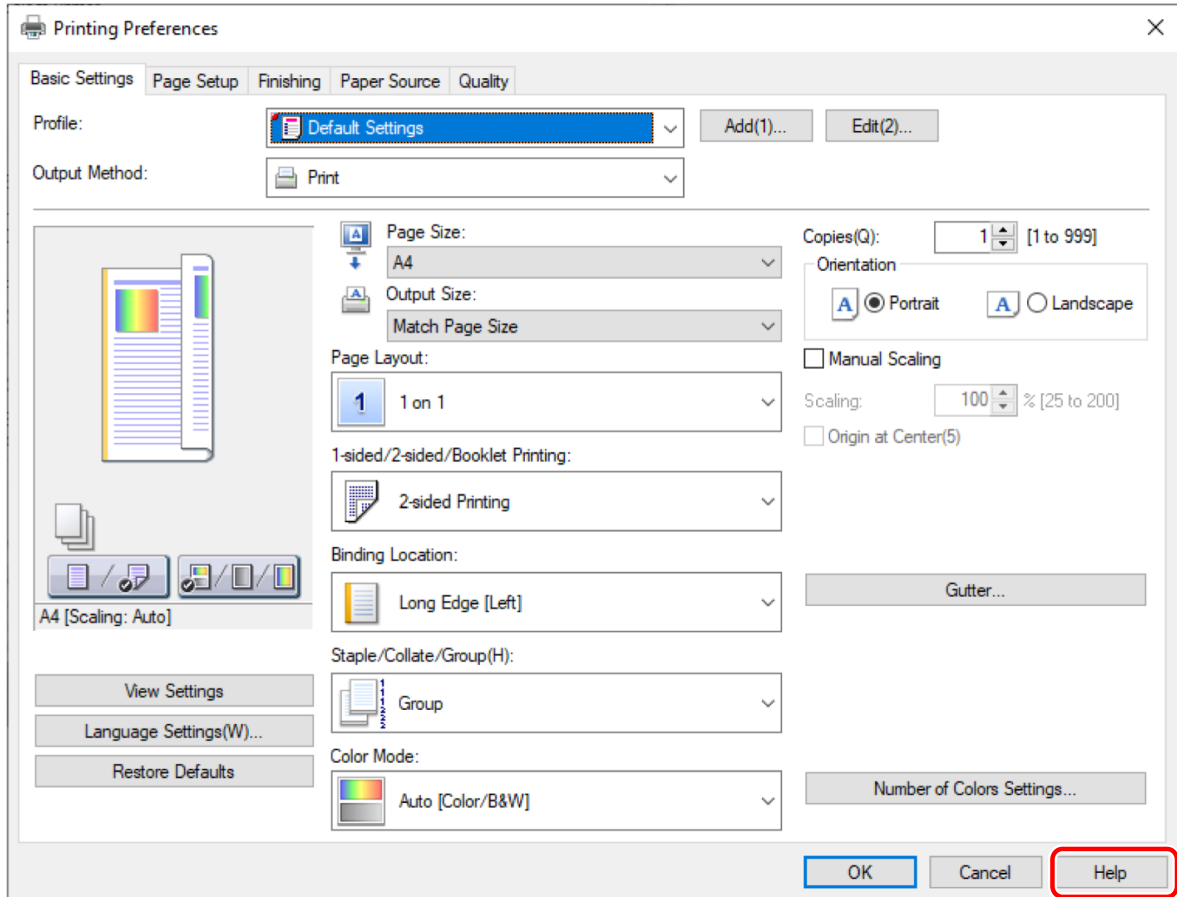
Related Topics

- ▶ [About This Driver\(P. 9\)](#)
- ▶ [How to Refer to the Help\(P. 67\)](#)

How to Refer to the Help

For details about how to use the driver and each of the functions, refer to the help.

The help is displayed by clicking [Help] in the print settings screen of the driver.



Creating a Shortcut to the Online Manual

Creating a Shortcut to the Online Manual	69
Installing a Shortcut to the Online Manual	70
Uninstalling the Shortcut to the Online Manual	71

Creating a Shortcut to the Online Manual

You can create a shortcut on your desktop to the website where online manuals for Canon products are available.

- ▶ **Installing a Shortcut to the Online Manual(P. 70)**
- ▶ **Uninstalling the Shortcut to the Online Manual(P. 71)**

Installing a Shortcut to the Online Manual

This explains the procedure for installing a shortcut to the website where online manuals for Canon products are available.

1 Insert the accompanying CD-ROM into your computer.

If the CD-ROM menu is not displayed, click the subsequent "Open details."

- If a message prompting you to insert a CD-ROM is displayed or if Windows Explorer is displayed: Execute [MInst.exe].
- If nothing is displayed: Double-click the CD-ROM icon.

2 If the language selection screen is displayed, select a language → click [OK].

3 Click [Installation] from the menu screen.

4 Select only the [Manuals] in the displayed screen → click [Install].

5 Read the CANON SOFTWARE LICENSE AGREEMENT → click [Yes].

6 Check the installation destination → click [Install].

If you want to change the installation destination, click [Browse].
The installation operation begins.

7 Click [Exit].

8 Click [Next] in the [Install] screen → click [Exit].

The shortcut is created on your desktop.

Uninstalling the Shortcut to the Online Manual

This explains the procedure for uninstalling the shortcut to the website where online manuals for Canon products are available, which is created with the accompanying CD-ROM.

1 Insert the accompanying CD-ROM into your computer.

If the CD-ROM menu is not displayed, click the subsequent "Open details."

- If a message prompting you to insert a CD-ROM is displayed or if Windows Explorer is displayed: Execute [MInst.exe].
- If nothing is displayed: Double-click the CD-ROM icon.

2 If the language selection screen is displayed, select a language → click [OK].

3 Click [Start Software Programs] from the menu screen.

4 Click [Start] for [Manual Uninstaller] in the displayed screen.

5 Click [Next].

The uninstallation operation begins.

6 Click [Exit].

7 In the [Start Software Programs] screen, click [Back].

8 Click [Exit] in the CD-ROM menu screen.

Troubleshooting

Troubleshooting	73
Cannot discover a device connected via a WSD port	74

Troubleshooting

This explains solutions to common problems.

- ▶ **Cannot discover a device connected via a WSD port(P. 74)**

Cannot discover a device connected via a WSD port

A number of causes can be considered. Change the settings as required while referring to each "Remedy."

Cause 1.

The device settings are incorrect.

Remedy

Check whether the following have been set at the device. If they have not been set, change the settings or install the appropriate driver.

- The settings for both [Use WSD Printing] and [Multicast Discovery Settings] are enabled.
- [PDL Selection (Plug and Play)] and the page description language of the driver match.

For details about the setting method for the page description language (plug and play) function of the device, refer to the manual of the device.

Cause 2.

The network settings of the operating system are incorrect.

Remedy

Check whether the necessary settings have been configured in the network settings of the operating system. If they have not been set, change the settings.

(1) Display [Settings] > [Network & internet].

(2) Click [Properties] (or [Change connection properties]).

If you cannot find [Properties] (or [Change connection properties]), click the name of the connected network in [Show available networks] to display the screen for selecting the network profile.

(3) Select [Private] for the network profile.

If the above method cannot be used, follow the procedures below. The screen for selecting the network profile may not be displayed, depending on your environment.

In Windows Server 2016

Display [Settings] > [Network & Internet] → click an icon displayed in the connection method to the current network → enable [Make this PC discoverable].

In Windows Server 2012 R2

(1) From the [Desktop] screen, display the charm bar → click [Settings] > [Change PC settings] > [Network]

(2) Click an icon displayed in the connection method to the current network → enable [Find devices and content].

In Windows Server 2012

Display [Control Panel] > [Network and Internet] > [Network and Sharing Center] → click [Change advanced sharing settings] → select [Public] (or [Guest or Public]) > [Turn on network discovery].

Cause 3.

The device is not displayed in the discovery results because the driver corresponding to the discovered device is already installed.

Remedy

If you want to install a driver by discovering a device, uninstall the driver first, then discover it again.

Related Topics

- ▶ [Installing Using a WSD Port\(P. 44\)](#)
- ▶ [Uninstalling the Driver\(P. 49\)](#)

This Font Software is licensed under the SIL Open Font License, Version 1.1.

This license is copied below, and is also available with a FAQ at: <http://scripts.sil.org/OFL>

SIL OPEN FONT LICENSE Version 1.1 - 26 February 2007

PREAMBLE

The goals of the Open Font License (OFL) are to stimulate worldwide development of collaborative font projects, to support the font creation efforts of academic and linguistic communities, and to provide a free and open framework in which fonts may be shared and improved in partnership with others.

The OFL allows the licensed fonts to be used, studied, modified and redistributed freely as long as they are not sold by themselves. The fonts, including any derivative works, can be bundled, embedded, redistributed and/or sold with any software provided that any reserved names are not used by derivative works. The fonts and derivatives, however, cannot be released under any other type of license. The requirement for fonts to remain under this license does not apply to any document created using the fonts or their derivatives.

DEFINITIONS

"Font Software" refers to the set of files released by the Copyright Holder(s) under this license and clearly marked as such. This may include source files, build scripts and documentation.

"Reserved Font Name" refers to any names specified as such after the copyright statement(s).

"Original Version" refers to the collection of Font Software components as distributed by the Copyright Holder(s).

"Modified Version" refers to any derivative made by adding to, deleting, or substituting -- in part or in whole -- any of the components of the Original Version, by changing formats or by porting the Font Software to a new environment.

"Author" refers to any designer, engineer, programmer, technical writer or other person who contributed to the Font Software.

PERMISSION & CONDITIONS

Permission is hereby granted, free of charge, to any person obtaining a copy of the Font Software, to use, study, copy, merge, embed, modify, redistribute, and sell modified and unmodified copies of the Font Software, subject to the following conditions:

- 1) Neither the Font Software nor any of its individual components, in Original or Modified Versions, may be sold by itself.
- 2) Original or Modified Versions of the Font Software may be bundled, redistributed and/or sold with any software, provided that each copy contains the above copyright notice and this license. These can be included either as stand-alone text files, human-readable headers or in the appropriate machine-readable metadata fields within text or binary files as long as those fields can be easily viewed by the user.
- 3) No Modified Version of the Font Software may use the Reserved Font Name(s) unless explicit written permission is granted by the corresponding Copyright Holder. This restriction only applies to the primary font name as presented to the users.
- 4) The name(s) of the Copyright Holder(s) or the Author(s) of the Font Software shall not be used to promote, endorse or advertise any Modified Version, except to acknowledge the contribution(s) of the Copyright Holder(s) and the Author(s) or with their explicit written permission.
- 5) The Font Software, modified or unmodified, in part or in whole, must be distributed entirely under this license, and must not be distributed under any other license. The requirement for fonts to remain under this license does not apply to any document created using the Font Software.

TERMINATION

This license becomes null and void if any of the above conditions are not met.

DISCLAIMER

THE FONT SOFTWARE IS PROVIDED "AS IS", WITHOUT WARRANTY OF ANY KIND, EXPRESS OR IMPLIED, INCLUDING BUT NOT LIMITED TO ANY WARRANTIES OF MERCHANTABILITY, FITNESS FOR A PARTICULAR PURPOSE AND NONINFRINGEMENT OF COPYRIGHT, PATENT, TRADEMARK, OR OTHER RIGHT. IN NO EVENT SHALL THE COPYRIGHT HOLDER BE LIABLE FOR ANY CLAIM, DAMAGES OR OTHER LIABILITY, INCLUDING ANY GENERAL, SPECIAL, INDIRECT, INCIDENTAL, OR CONSEQUENTIAL DAMAGES, WHETHER IN AN ACTION OF CONTRACT, TORT OR OTHERWISE, ARISING FROM, OUT OF THE USE OR INABILITY TO USE THE FONT SOFTWARE OR FROM OTHER DEALINGS IN THE FONT SOFTWARE.