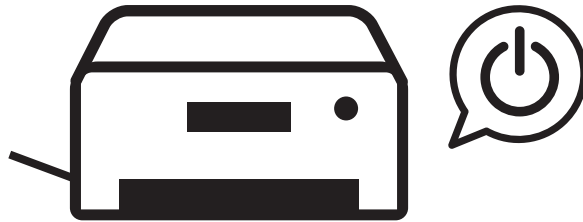


Setup Instructions

Para español, voltear >>

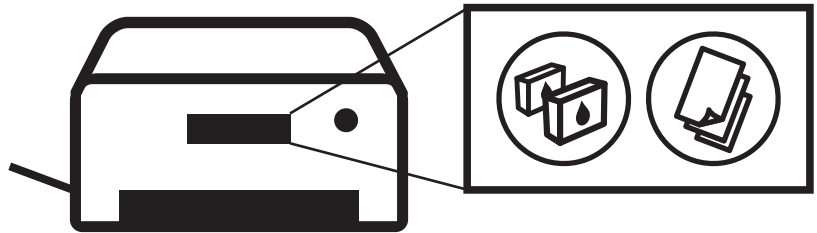
1

Connect the Power Cord, and then press the ON button



2

Follow the instructions on the printer's screen

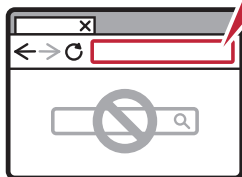


3

Connect to a computer or mobile device on the website



<https://ij.start.canon/connect>

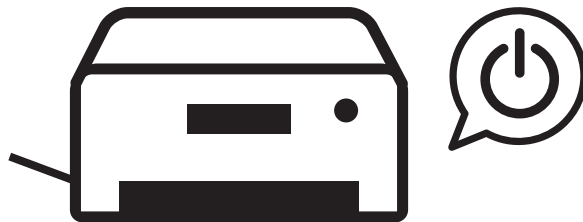


Instrucciones de instalación

For English, turn over >>

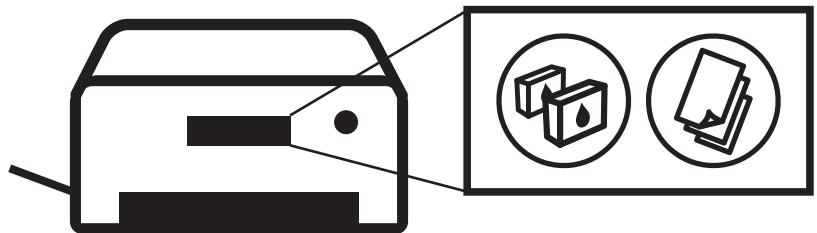
1

Conecte el cable de alimentación y, a continuación, pulse el botón ACTIVADO (ON)



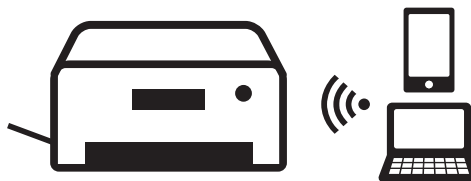
2

Siga las instrucciones que aparezcan en pantalla de la impresora



3

Conéctese a una computadora o dispositivo móvil en el sitio web



<https://ij.start.canon/connect>

