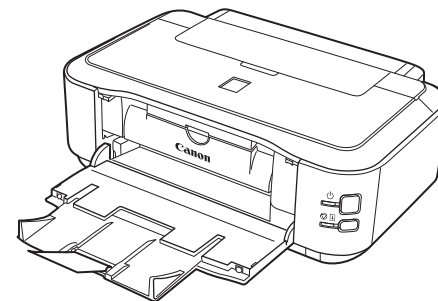




Photo Printer  
**PIXMA** iP4700 series

# Getting Started

Read Me First



Make sure to read this manual before using the printer. Please keep it in hand for future reference.



QT52721V02

## ■ Symbols Used in This Document



Instructions including important information. Be sure to read these indications.



Instructions as notes for operation or additional explanations.



Descriptions for operations that take some time to complete.



Indicates operations in Windows.



Indicates operations in Macintosh.

- Microsoft is a registered trademark of Microsoft Corporation.
- Windows is a trademark or registered trademark of Microsoft Corporation in the U.S. and/or other countries.
- Windows Vista is a trademark or registered trademark of Microsoft Corporation in the U.S. and/or other countries.
- Internet Explorer is a trademark or registered trademark of Microsoft Corporation in the U.S. and/or other countries.
- Macintosh and Mac are trademarks of Apple Inc., registered in the U.S. and other countries.

# Contents

**1** Preparation

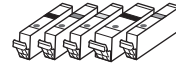
**2** Turn the Power On



**3** Install the Print Head



**4** Install the Ink Tanks



**5** Install the Software



**6** Loading Paper

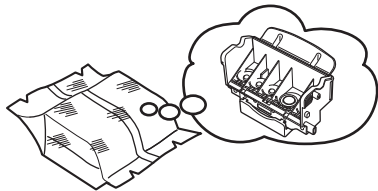
After Installing the Printer

# 1 Preparation

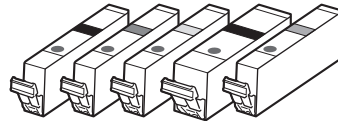


## ■ Check the Included Items

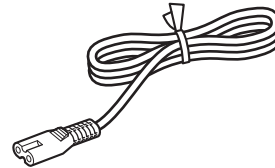
Before turning on the printer, remove all orange tapes and protective sheets from the inside and outside of the printer.



Print Head



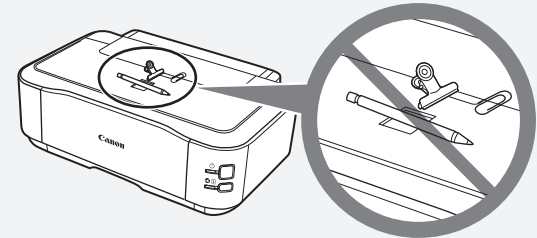
5 ink tanks  
(BK, M, C, PGBK, Y)



power cord

- Manuals
- Setup CD-ROM (containing the drivers, applications and on-screen manuals)
- Matte Photo Paper MP-101 (for Automatic Print Head Alignment)
- Warranty

### □ Choosing a Location



- Do not install the printer where an object may fall on it. The object may fall inside the printer, resulting in malfunction.
- Do not place any object on top of the printer. It may fall into the printer when opening covers, resulting in malfunction.

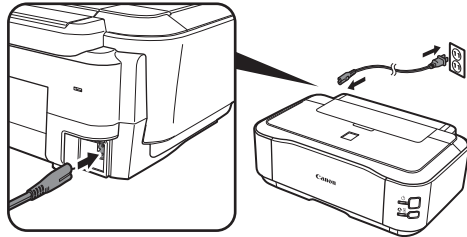


- A USB cable (A-B type) is necessary to connect the printer with your computer.

# 2 Turn the Power On



1

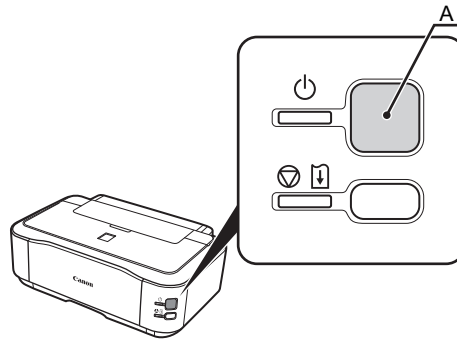


Plug the power cord into the left side at the back of the printer, then connect the other end to the wall outlet.



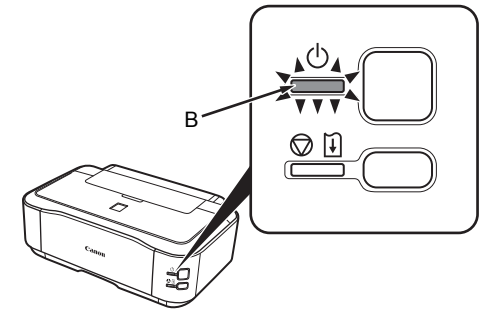
• Do NOT connect the USB cable at this stage.

2



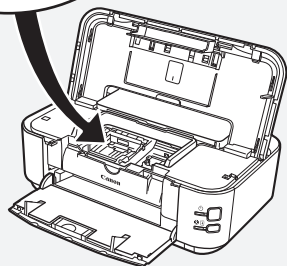
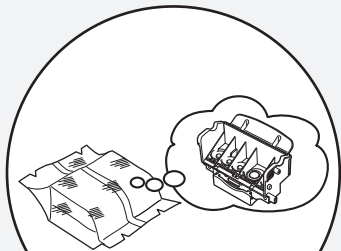
Turn on the printer (A).

3



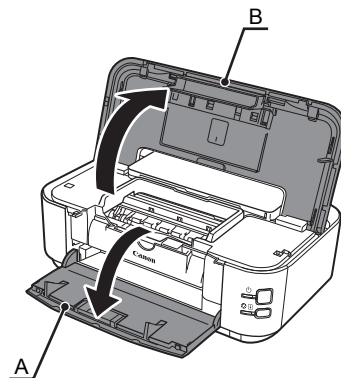
Make sure that the **POWER** lamp (B) lights green.

# 3 Install the Print Head



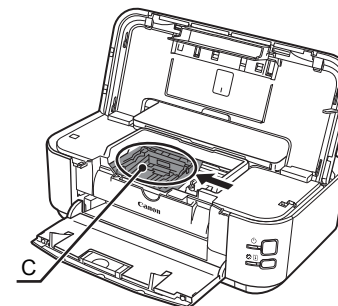
- Handle the Print Head carefully. Do not drop or apply excessive pressure to it.

1



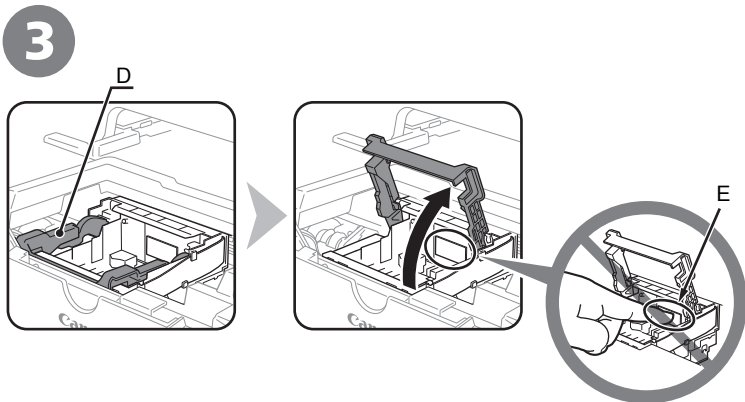
Open the Paper Output Tray (A) and the Top Cover (B).

2



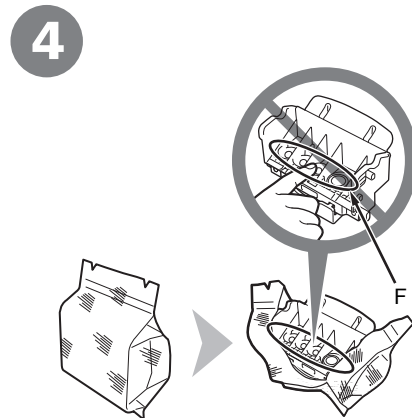
Make sure that the Print Head Holder (C) moves to the installation position.

- The Print Head Holder makes a noise as it moves. This is normal operation.
- If the Print Head Holder does not move, make sure that the printer is turned on.



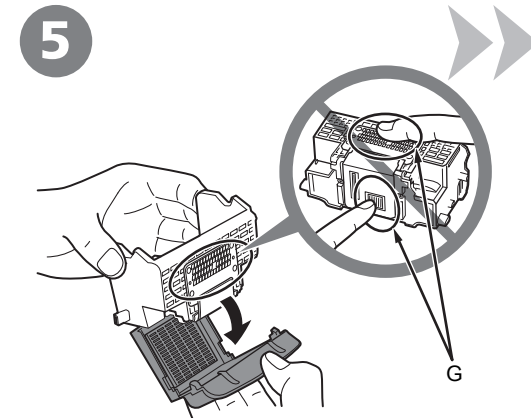
Firmly raise the Print Head Lock Lever (D) of the Print Head Holder until it stops.

- Do not touch the inside of the Print Head Holder (E). The printer may not print properly if you touch it.



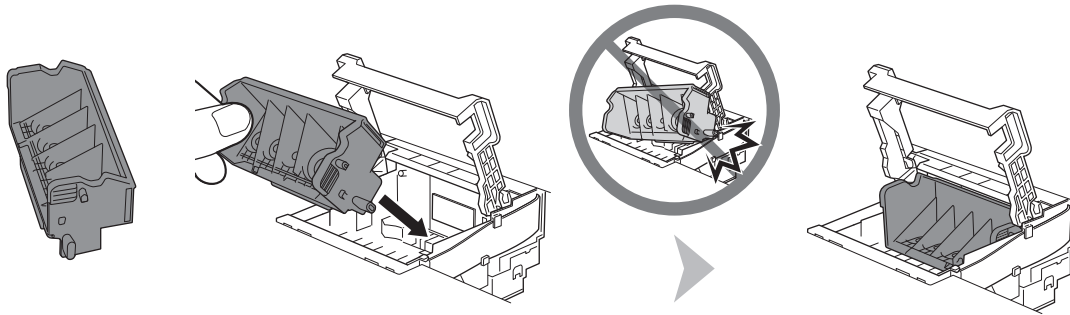
Remove the Print Head from the silver package.

- Do not touch the inside (F) or metal parts (G) of the Print Head. The printer may not print properly if you touch them.
- There may be some transparent or light blue ink on the inside of the bag the Print Head comes in, or the inside of the protective cap - this has no effect on print quality. Be careful not to get ink on yourself when handling these items.



Remove the orange protective cap.

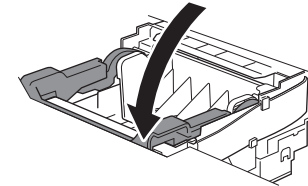
6



Tilt the Print Head forward and set it in place as shown.

- Do not knock the Print Head against the sides of the holder.

7

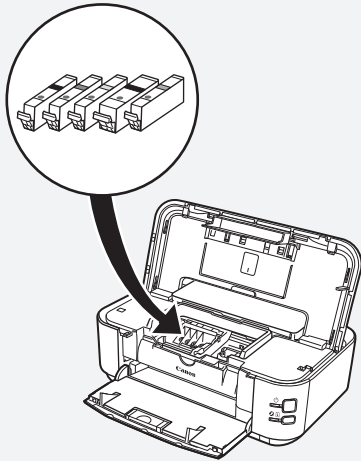
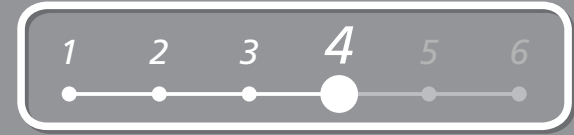


Lower the Print Head Lock Lever completely.

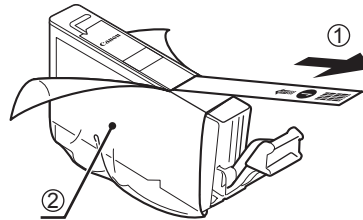
- Hold the Print Head Lock Lever firmly and lower it gently.
- Once you have installed the Print Head, do not remove it unnecessarily.



# 4 Install the Ink Tanks

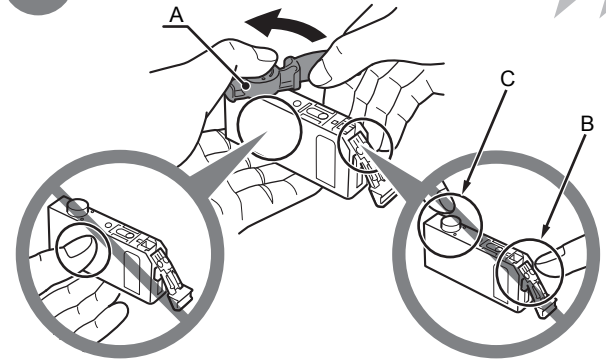


1



Pull the orange tape (1) in the direction of the arrow to peel off the protective film and remove the film (2) completely.

2



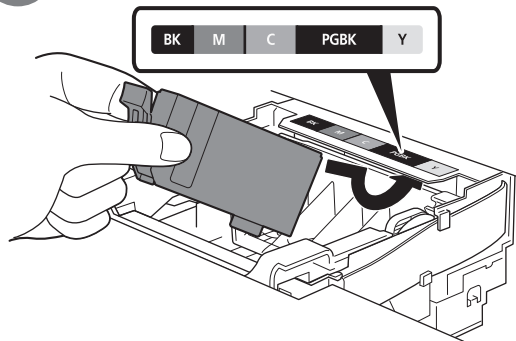
While pressing down with your left thumb, twist off the orange protective cap (A) located on the bottom of the ink tank.

- Handle the ink tanks carefully. Do not drop or apply excessive pressure to them.
- If the Top Cover is left open for more than 10 minutes, the Print Head Holder moves to the right. In this case, close and reopen the Top Cover.
- Be sure to use the supplied ink tanks.

- Do not touch the electrical contacts (B) or open ink port (C) on the ink tank. The printer may not print properly if you touch them.
- Do not hold the sides of the ink tank; ink may splash.

# 4

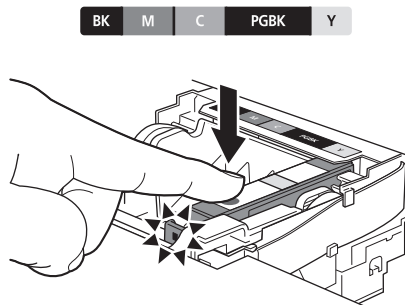
3



Tilt the ink tank, then insert it under the label and against the back end of the slot.

Make sure that the color of the label matches the ink tank.

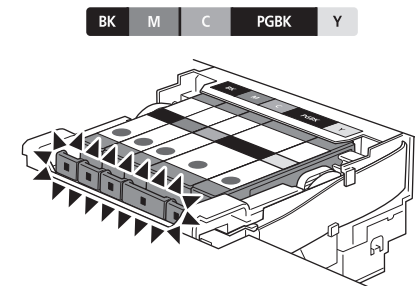
4



Press the **PUSH** mark on the ink tank firmly until it clicks.

When the installation is completed properly, the **Ink** lamp lights red.

5



Install all the other ink tanks in the same way.

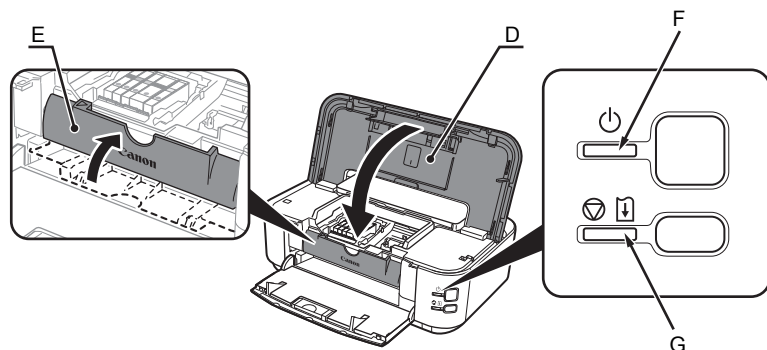
Install all the ink tanks.

Make sure all the **Ink** lamps light red.



- Once you have installed the ink tanks, do not remove them unnecessarily.

6



Close the Top Cover (D).

Make sure the Inner Cover (E) is closed.



- Wait for about 5 minutes until the **POWER** lamp (green) (F) stops flashing and stays lit then operating noise stops, and go to the next step.
- The printer may make some operating noises when preparing to print. This is normal operation.

• If the **Alarm** lamp (G) flashes orange, make sure that the Print Head and the ink tanks are correctly installed.

# 5 Install the Software

To use the printer by connecting it to a computer, software including the drivers needs to be copied (installed) to the computer's hard disk. The installation process takes about 20 minutes. (The installation time varies depending on the computer environment or the number of applications to be installed.)

The screens below are based on Windows Vista operating system Ultimate Edition (hereafter referred to as "Windows Vista") and Mac OS X v.10.5.x.

- Quit all running applications before installation.
- Log on as the administrator (or a member of the Administrators group).
- Do not switch users during the installation process.
- Internet connection may be required during the installation. Connection fees apply.
- It may be necessary to restart your computer during the installation process. Follow the on-screen instructions and do not remove the **Setup CD-ROM** during restarting. The installation resumes once your computer has restarted.
- Mac OS 9, Mac OS X Classic environments, or Mac OS X v.10.3.8 or earlier are not supported.

## Windows

- If the **Found New Hardware** or **Found New Hardware Wizard** dialog box appears:



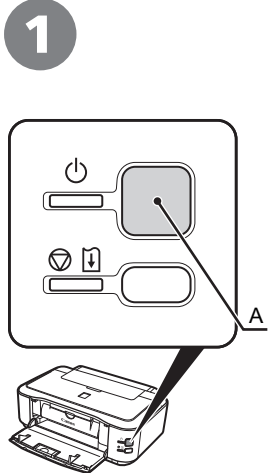
If you connect a USB cable to the printer before installation of the drivers, this screen appears.

- 1 Remove the USB cable connected to your computer.  
The dialog box may close. In this case, proceed from ①.
- 2 Click **Cancel** to quit the dialog box.
- 3 Proceed from ①.

# Windows

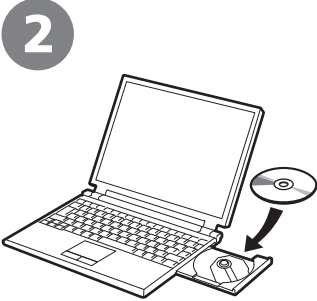
□ For Windows Vista/XP

If you are using Internet Explorer 7 or later, you can use the Web print software Easy-WebPrint EX. An internet connection is required for installation. (It is also possible to install this software later.)



**1** TURN OFF THE PRINTER (A).

- Operating noise continues for about 35 seconds until the printer turns off.



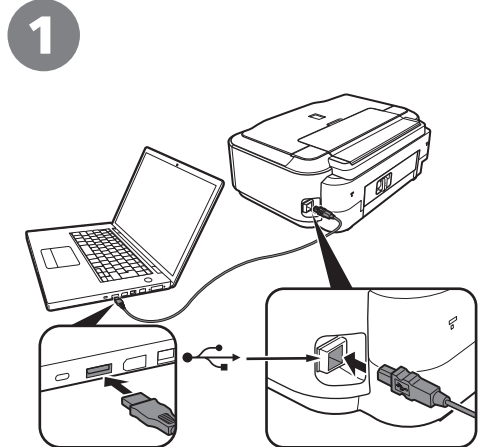
**2** Turn on the computer, then insert the **Setup CD-ROM** into the CD-ROM drive.

The setup program will start automatically.



- If the program does not start automatically, double-click the CD-ROM icon in **Computer** or **My Computer**. When the CD-ROM contents appear, double-click **MSETUP4.EXE**.

# Macintosh



**1** Connect the printer to the computer with a USB cable. Make sure the printer is turned on.



- The USB Port is located on the right side at the back of the printer.



**2** Turn on the computer, then insert the **Setup CD-ROM** into the CD-ROM drive.

3

## Windows Vista

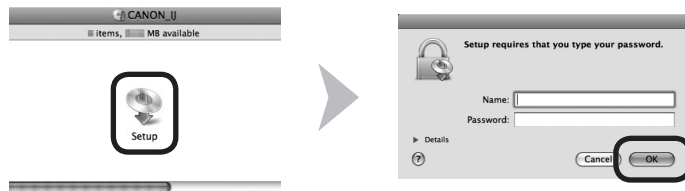
Windows XP/2000 → 4



Click **Run Msetup4.exe** on the **AutoPlay** screen, then click **Continue** on the **User Account Control** dialog box.

If the **User Account Control** dialog box reappears in following steps, click **Continue**.

3



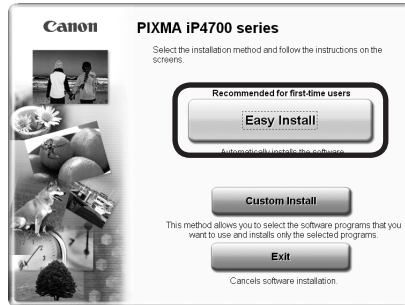
Double-click the **Setup** icon of the CD-ROM folder to proceed to the following screen. Enter your administrator name and password, then click **OK**.

If you do not know your administrator name or password, click **Help**, then follow the on-screen instructions.



- If the CD-ROM folder does not open automatically, double-click the CD-ROM icon on the desktop.

4



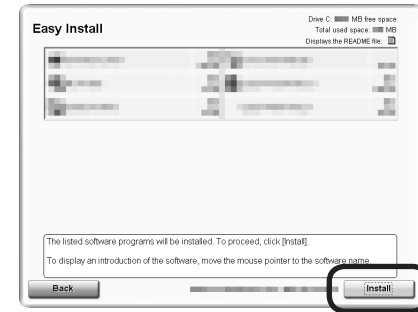
Click **Easy Install**.

The drivers, application software, and on-screen manuals are installed all together.



- If you want to select particular items to install, click **Custom Install**.

5



Click **Install**.

Follow any on-screen instructions to proceed with the installation.

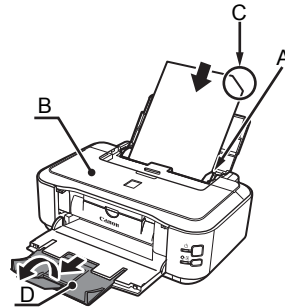
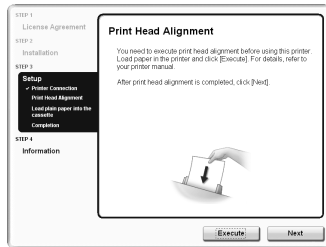
#### For Windows Vista/XP

- If you are using Internet Explorer 7 or later, you can use the Web print software Easy-WebPrint EX. An internet connection is required for installation. (It is also possible to install this software later.)



## Important Information for the Installation

## □ Print Head Alignment



Load a sheet of supplied speciality paper (**Matte Photo Paper MP-101**) in the Rear Tray (A) and click **Execute**. Do not open the Top Cover (B) while printing. For details, refer to “6 Loading Paper” on page 16.

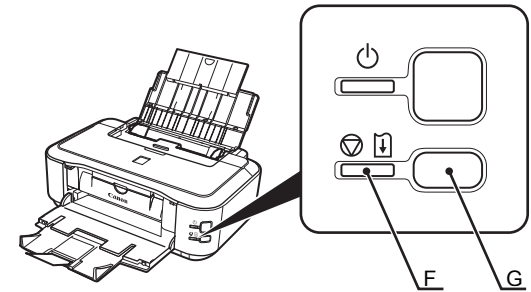
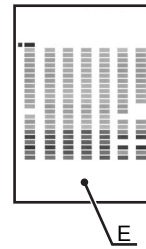
If any other papers have been loaded already, remove it and load the **MP-101** paper.



- Be sure to use **MP-101** for Automatic Print Head Alignment.
- **MP-101** cannot be fed from the Cassette. Load it in the Rear Tray.
- **MP-101** has front and back sides. Load it so that the cut corner (C) is at the top right.



- Make sure that the Output Tray Extension (D) is extended.



When the pattern (E) shown is printed, Print Head Alignment is now complete. In Windows, click **Next** on the **Print Head Alignment** screen.



- Wait until the pattern printing ends (about 5 minutes).



- If the Alarm lamp (orange) (F) flashes, press the RESUME/CANCEL button (G) on the printer to clear the error, then click Next. After the installation is complete, perform Print Head Alignment by referring to “When Printing Becomes Faint or Colors Are Incorrect” in the on-screen manual: **Basic Guide**.



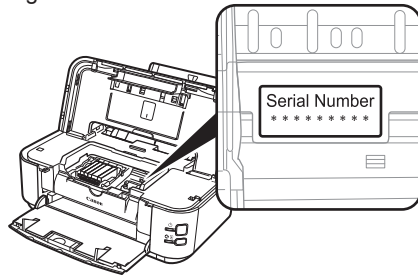
- The pattern is printed in blue and black.





### Important Information for the Installation

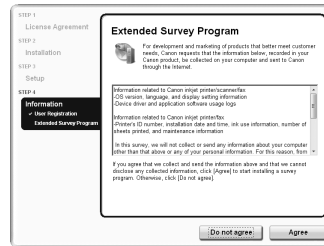
#### □ Necessary Information for the User Registration



The product serial number is required when registering the product. The serial number is located inside the printer (as shown in the illustration).

- When opening the Top Cover, the Print Head Holder moves automatically.

#### □ About Extended Survey Program



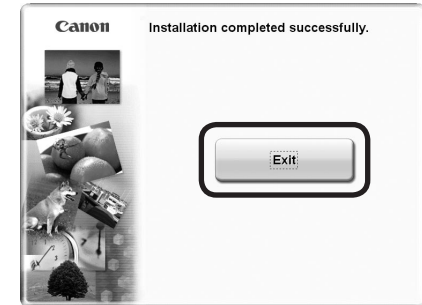
If you can agree to Extended Survey Program, click **Agree**.

If you click **Do not agree**, the Extended Survey Program will not be installed. (This has no effect on the printer's functionality.)



- The screen does not appear on Mac OS X v.10.3.9.

## 6



Click **Exit** to complete the installation.

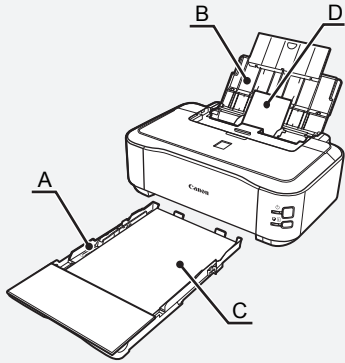
If **Restart** is displayed, follow the instruction to restart the computer.

After restarting the computer, remove the **Setup CD-ROM** and keep it in a safe place.

Next, read "6 Loading Paper" on page 16!

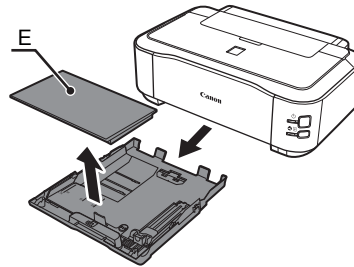
# 6 Loading Paper

This section explains how to load paper in the Cassette (A) and the Rear Tray (B).



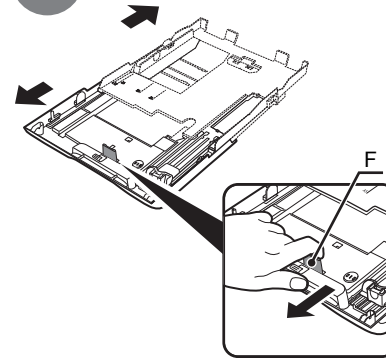
The Cassette supports plain paper (C) only. To print photo paper/Hagaki (D), be sure to load it in the Rear Tray.

1



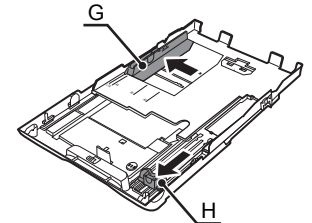
Pull out the Cassette and remove the Cover (E).

2



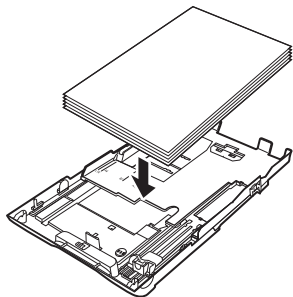
Pull the Tab (F) in the direction of the arrow and extend the Cassette.

3



Move the Paper Guides (G) and (H) to both edges.

4

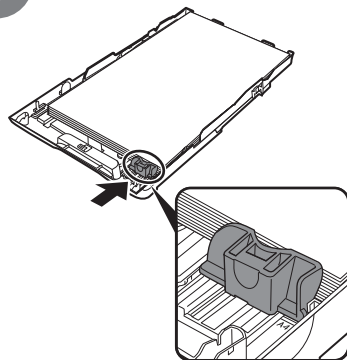


Load plain paper.  
Load paper with the printing side facing down.



- To print on speciality paper, be sure to load it in the Rear Tray.

5



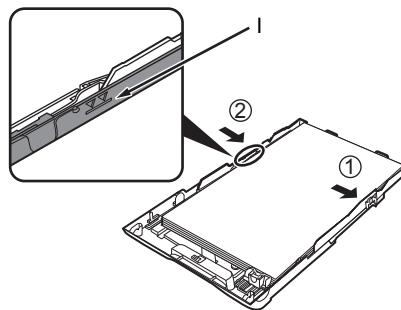
Slide the Paper Guide to align with the actual size of the paper.

The Paper Guide will stop when it aligns with the corresponding mark of paper size.



- There may be a little space between the Paper Guide and the paper stack.

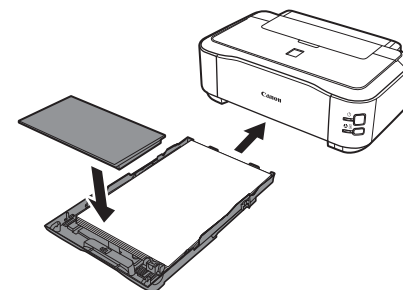
6



Align the paper with the right edge of the Cassette (1), then slide the Paper Guide against the left edge of the paper (2).

Make sure that the height of the paper stack does not exceed the line (l).

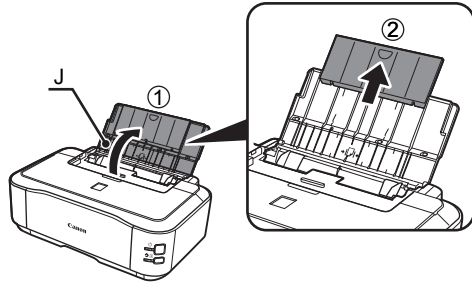
7



Attach the Cover and insert the Cassette into the printer until it clicks into place.

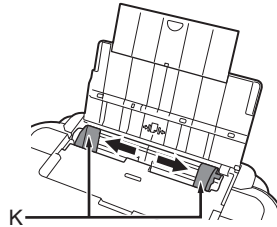


8



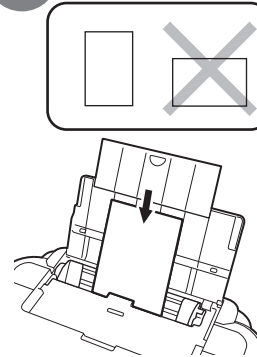
Open the Paper Support (J), and pull it up.

9



Move the Paper Guides (K) to both edges.

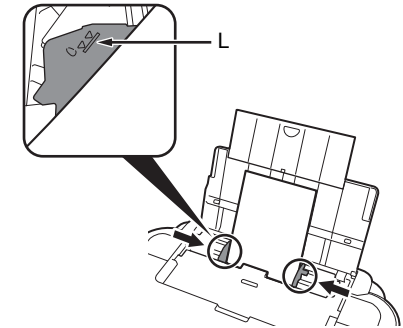
10



Load paper in the center of the Rear Tray.

Load paper in portrait orientation with the printing side facing up.

11



Slide the left and right Paper Guides against both edges of the paper.

Make sure that the height of the paper stack does not exceed the line (L).



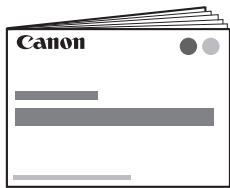
- For details on media sizes and types you can use, refer to "Loading Paper" in the on-screen manual: **Basic Guide**.

Printer installation is now complete!

# After Installing the Printer

## ■ Introduction of Manuals

The following manuals are supplied with the printer.



### **Getting Started** (this manual)

Describes how to set up and use your printer. Introduces the printer and its functions, the included manuals and application software.



### **Basic Guide**

Describes basic operations and media, and gives an introduction to other functions available.



on-screen manuals



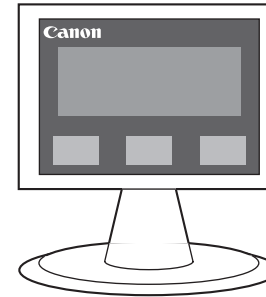
### **Advanced Guide**

Describes various operating procedures to make full use of printer.



### **Troubleshooting**

Describes troubleshooting tips for problems you may encounter when using the printer.



For details on opening the on-screen manuals, refer to page 20.

## ■ Solution Menu

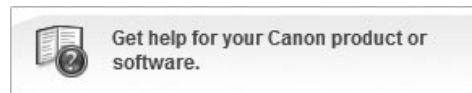
Solution Menu is a gateway to functions and information that allow you to make full use of the printer!



Example: Windows Vista



\*The buttons displayed vary depending on the country or region of purchase.



Click this button to open the on-screen manuals.

Open various applications and on-screen manuals with a single click.

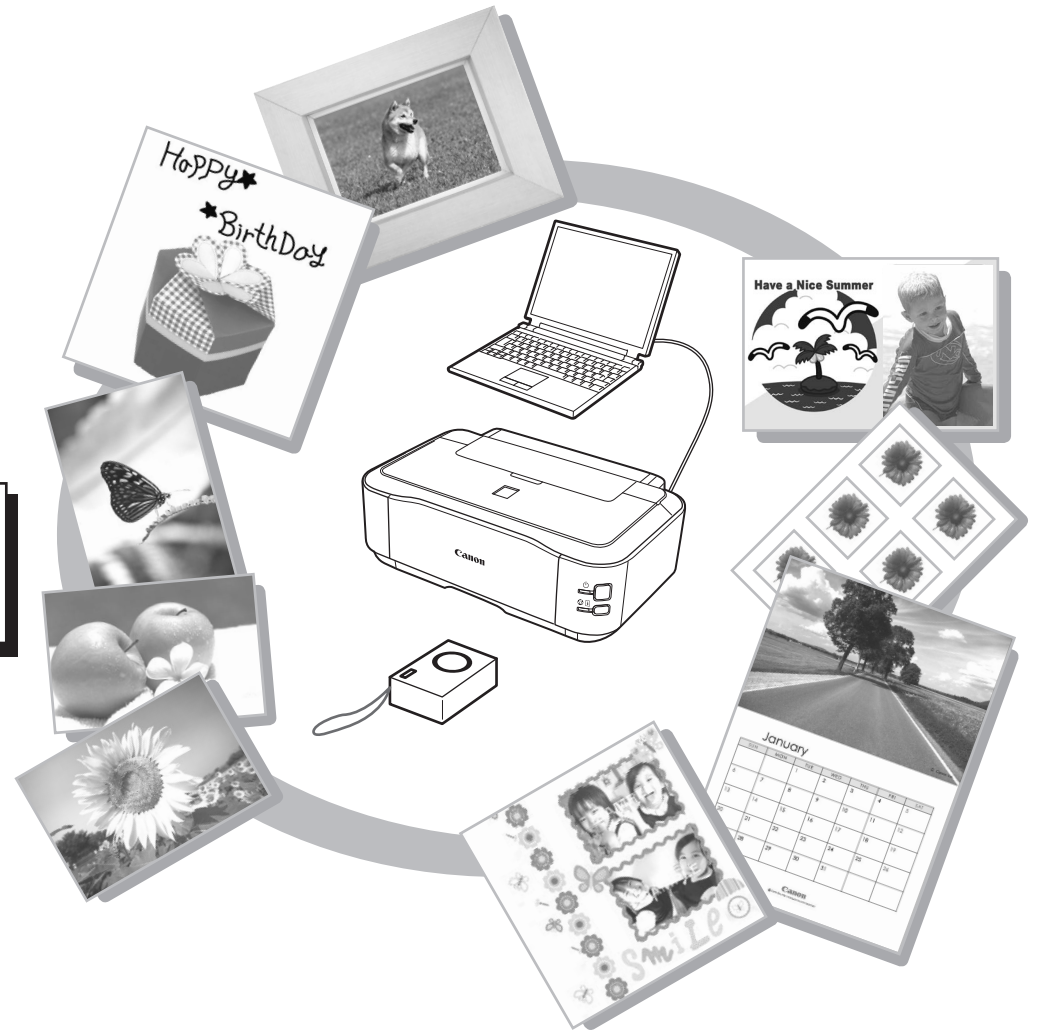
You can start Solution Menu from the **Canon Solution Menu** icon on the desktop (Windows) or on the Dock (Macintosh).

If you have a problem with printer settings, click the **Change settings or find solutions to problems.** in Solution Menu to open My Printer (Windows only).

## Try Using the Printer!

Various application software are installed on the computer along with the drivers. You can print creative items by correcting/enhancing photos using the applications.

For details on how to use the application software and the printer, refer to the on-screen manuals: **Basic Guide** and **Advanced Guide**.



# Print Photos from a Computer

Easy-PhotoPrint EX allows you to print photos easily.

This section explains how to print borderless photos using 4" x 6" size **Photo Paper Plus Glossy II**. The screens are based on Windows Vista.

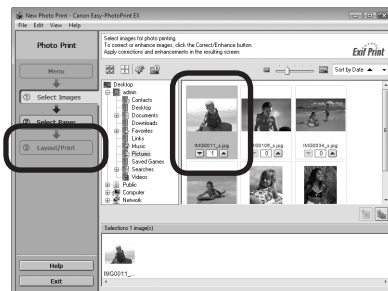
1



In Solution Menu, click **One-Click to Photo Print**.

Easy-PhotoPrint EX starts.

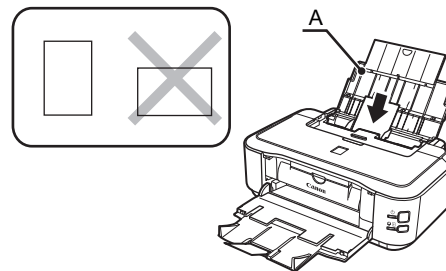
2



Select the image you want to print, then click **Layout/Print**.

When a photo is selected, the number of copies is set to "1".

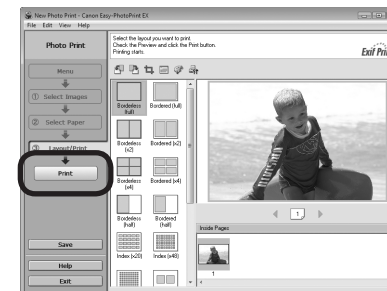
3



Load a sheet of photo paper in the Rear Tray (A) in portrait orientation.

Load a sheet of paper with the printing side facing up.

4



Click **Print**.

For Windows:  
Printing will start.

For Macintosh:  
Click **Print** on the **Print** dialog box to start printing.



- For details on starting Solution Menu, refer to "Solution Menu" on page 20.
- For more information, refer to the on-screen manual: **Advanced Guide**.



- For details, refer to "6 Loading Paper" on page 16.



# Specifications

General Specifications	
Printing resolution (dpi)	9600* (horizontal) x 2400 (vertical) * Ink droplets can be placed with a pitch of 1/9600 inch at minimum.
Interface	USB Port: Hi-Speed USB*  Direct Print Port: PictBridge  * A computer that complies with Hi-Speed USB standard is required. Since the Hi-Speed USB interface is fully upwardly compatible with USB 1.1, it can be used at USB 1.1.
Print width	8 inches/203.2 mm (for Borderless Printing: 8.5 inches/216 mm)
Operating environment	Temperature: 5 to 35°C (41 to 95°F) Humidity: 10 to 90% RH (no condensation)
Storage environment	Temperature: 0 to 40°C (32 to 104°F) Humidity: 5 to 95% RH (no condensation)
Power supply	AC 100-240 V, 50/60 Hz
Power consumption	Printing: Approx. 17W Standby (minimum): Approx. 0.9W* OFF: Approx. 0.5W* * USB connection to PC
External dimensions	Approx. 17.0 (W) x 11.7 (D) x 6.0 (H) inches Approx. 431 (W) x 296 (D) x 153 (H) mm * With the Paper Support and Paper Output Tray retracted.
Weight	Approx. 5.7 kg (Approx. 12.5 lb) * With the Print Head and ink tanks installed.
Print Head/ink	Total 4,416 nozzles (PGBK 320 nozzles, Y/DyeBK each 512 nozzles, C/M each 1,536 nozzles)

Minimum System Requirements		
☞ Conform to the operating system's requirements when higher than those given here.		
	Windows	Macintosh
Operating System	Windows Vista, Vista SP1	Mac OS X v.10.5
Processor	1 GHz processor	Intel processor, PowerPC G5, PowerPC G4 (867 MHz or faster)
RAM	512 MB	512 MB
	Windows XP SP2, SP3	Mac OS X v.10.4
	300 MHz processor	Intel processor, PowerPC G5, PowerPC G4, PowerPC G3
	128 MB	256 MB
	Windows 2000 Professional SP4	Mac OS X v.10.3.9
	300 MHz processor	PowerPC G5, PowerPC G4, PowerPC G3
	128 MB	128 MB
Browser	Internet Explorer 6 or later	Safari
Hard Disk Space	450 MB Note: For bundled software installation.	600 MB Note: For bundled software installation.
CD-ROM Drive	Required	
Display	SVGA 800 x 600	XGA 1024 x 768
	<ul style="list-style-type: none"> <li>Windows: Operation can only be guaranteed on a PC with Windows Vista, XP or 2000 pre-installed.</li> <li>To upgrade from Windows XP to Windows Vista, first uninstall software bundled with the Canon inkjet printer.</li> <li>Macintosh: Hard Disk must be formatted as Mac OS Extended (Journaled) or Mac OS Extended.</li> <li>Internet Explorer 7 or later is required to install Easy-WebPrint EX.</li> </ul>	

Additional System Requirements for the On-Screen Manuals	
Windows	Macintosh
Browser: Easy Guide Viewer Note: Internet Explorer 6 or later must be installed. The on-screen manual may not be displayed properly depending on your operating system or Internet Explorer version. We recommend that you keep your system up to date with Windows Update.	Browser: Easy Guide Viewer Note: The on-screen manual may not be displayed properly depending on your operating system or Safari version. We recommend that you keep your system up to date.

Specifications are subject to change without notice.

## About Consumables

Consumables (ink tanks / FINE Cartridges) are available for 5 years after production has stopped.

# Getting Help from Canon

Email Tech Support — [www.canontechsupport.com](http://www.canontechsupport.com)

Toll-Free Live Tech Support— (1-800-828-4040) under warranty

This option provides live telephone technical support, free of service charges,

Monday-Friday (excluding holidays), during the warranty period.

Telephone Device for the Deaf (TDD) support is available at (1-866-251-3752).

## Ordering Information

The following ink tanks are compatible with this printer.



### Order #

CLI-221 BK	2946B001
CLI-221 M	2948B001
CLI-221 C	2947B001
PGI-220 BK	2945B001
CLI-221 Y	2949B001

Call 1-800-OK-CANON to locate a dealer near you, or visit the Canon eStore at [www.canonstore.com](http://www.canonstore.com)

CANON U.S.A. INC.

One Canon Plaza, Lake Success, NY 11042 U.S.A.

[www.usa.canon.com](http://www.usa.canon.com)