

Canon

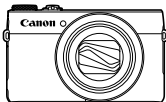
PowerShot G7X

Getting Started

ENGLISH

Package Contents

Before use, make sure the following items are included in the package. If anything is missing, contact your camera retailer.



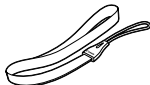
Camera



Battery Pack
NB-13L*1



Battery Charger
CB-2LHE



Wrist Strap*2


*1 Do not peel off the battery pack label.

*2 For attachment instructions, refer to the *Camera User Guide* that can be downloaded from the Canon website.

- Printed matter is also included.
- A memory card is not included.

Compatible Memory Cards

No memory card is included. Purchase one of the following kinds of card as needed. These memory cards can be used, regardless of capacity. For details on the number of shots and recording time per memory card, see "Specifications" in the downloadable *Camera User Guide*.

- SD memory cards*1
- SDHC memory cards*1*2
- SDXC memory cards*1*2 

*1 Cards conforming to SD standards. However, not all memory cards have been verified to work with the camera.

*2 UHS-I memory cards are also supported.

Manuals and Software



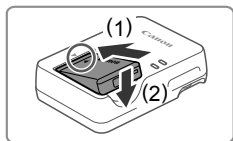
You can download manuals and software from the following URL.

<http://www.canon.com/icpd/>

- With a computer connected to the Internet, access the above URL.
- Access the site for your country or region.
- Adobe Reader is required to view the manuals.
- You can also download software from the website. For instructions on downloading and installing the software, refer to the *Camera User Guide* available for download.

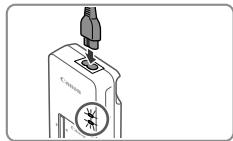
Initial Preparations

Charging the Battery Pack



1 Insert the battery pack.

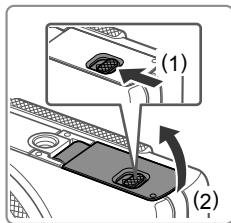
- After aligning the ▲ marks on the battery pack and charger, insert the battery pack by pushing it in (1) and down (2).



2 Charge the battery pack.

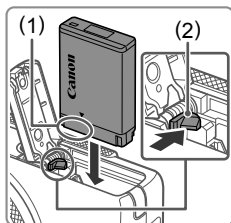
- Plug the power cord into the charger, then plug the other end into a power outlet.
- The charging lamp turns orange, and charging begins.
- When charging is finished, the lamp turns green. Remove the battery pack.
- For details on charging time and the number of shots or recording time available with a fully charged battery pack, refer to “Specifications” in the downloadable *Camera User Guide*.

Inserting the Battery Pack and Memory Card



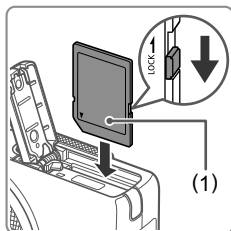
1 Open the cover.

- Slide the switch (1) and open the cover (2).



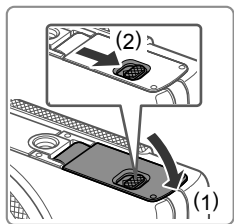
2 Insert the battery pack.

- Holding the battery pack with the terminals (1) facing as shown, press the battery lock (2) in the direction of the arrow and insert the battery pack until the lock clicks shut.
- If you insert the battery pack facing the wrong way, it cannot be locked into the correct position. Always confirm that the battery pack is facing the right way and locks when inserted.
- To remove the battery pack, press the battery lock in the direction of the arrow.



3 Check the card's write-protect tab and insert the memory card.

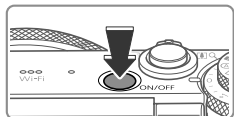
- Recording is not possible on memory cards with a write-protect tab when the tab is in the locked position. Slide the tab to the unlocked position.
- Insert the memory card with the label (1) facing as shown until it clicks into place.
- To remove the memory card, push it in until you feel a click, and then slowly release it.



4 Close the cover.

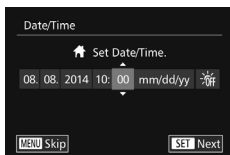
- Lower the cover (1) and hold it down as you slide the switch, until it clicks into the closed position (2).

Setting the Date and Time



1 Turn the camera on.

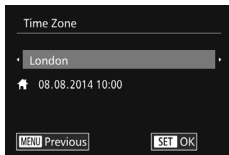
- Press the ON/OFF button.
- The [Date/Time] screen is displayed.



2 Set the date and time.

- Press the [◀][▶] buttons to choose an option.
- Press the [▲][▼] buttons or turn the [DIAL] to specify the date and time.
- When finished, press the [FUNC/SET] button.





3 Specify your home time zone.

- Press the [◀][▶] buttons to choose your home time zone.
- Press the [FUNC SET] button when finished. After a confirmation message, the setting screen is no longer displayed.
- To turn off the camera, press the ON/OFF button.

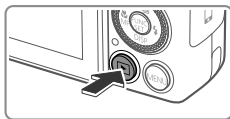
Changing the Date and Time

To adjust the date and time once you have set it, do the following.

- 1 Press the [MENU] button.
- 2 Move the zoom lever to choose the [↑↑] tab.
- 3 Press the [▲][▼] buttons or turn the [●] dial to choose [Date/Time], and then press the [FUNC SET] button.
- 4 Follow step 2 in “Setting the Date and Time” to adjust the settings.
- 5 Press the [MENU] button.

Display Language

Change the display language as needed.



1 Enter Playback mode.

- Press the [▶] button.



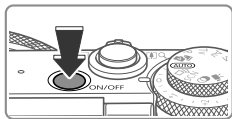
2 Access the setting screen.

- Press and hold the [FUNC SET] button, and then immediately press the [MENU] button.
- Press the [▲][▼][◀][▶] buttons or turn the [●] dial to choose a language, and then press the [FUNC SET] button.

Trying the Camera Out

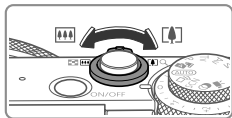
Shooting

For fully automatic selection of the optimal settings for specific scenes, simply let the camera determine the subject and shooting conditions.



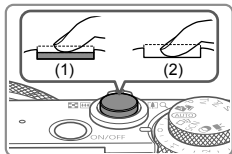
1 Turn the camera on and enter [AUTO] mode.

- Press the ON/OFF button.



2 Compose the shot.

- To zoom in and enlarge the subject, move the zoom lever toward [T] (telephoto) as you watch the screen, and to zoom away from the subject, move it toward [W] (wide angle).



3 Shoot.

Shooting Still Images

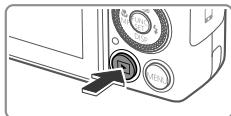
- Press the shutter button lightly (1).
- The camera beeps twice after focusing, and AF frames are displayed to indicate image areas in focus. Press the shutter button all the way down (2).
- If [Raise the flash] appears on the screen, move the [Flash] switch to raise the flash. It will fire when shooting. If you prefer not to use the flash, push it down with your finger, into the camera.



Shooting Movies

- Press the movie button to start shooting, and press it again to stop.

Viewing



1 Enter Playback mode.

- Press the [▶] button.



2 Browse through your images.

- To view the previous or next image, press the [◀][▶] buttons or turn the [●] dial.
- Movies are identified by a [SET▶] icon. To play movies, go to step 3.



3 Play movies.

- Press the [FUNC/SET] button to access the movie control panel, choose [▶] (either press the [◀][▶] buttons or turn the [●] dial), and then press the [FUNC/SET] button again.
- Playback now begins, and after the movie is finished, [SET▶] is displayed.
- To adjust the volume, press the [▲][▼] buttons.

Erasing Images

To erase the image you chose in step 2, do the following. Note that erased images cannot be recovered.

1 Press the [🗑️] button.

2 After [Erase?] is displayed, press the [◀][▶] buttons or turn the [●] dial to choose [Erase], and then press the [FUNC/SET] button.

To ensure proper operation of this product, use of genuine Canon accessories is recommended.

- Interface Cable IFC-400PCU
- Stereo AV Cable AVC-DC400ST
- HDMI cable (camera end: Type D): Use a commercially available cable no longer than 2.5 m.

Only for European Union and EEA (Norway, Iceland and Liechtenstein)



These symbols indicate that this product is not to be disposed of with your household waste, according to the WEEE Directive (2012/19/EU), the Battery Directive (2006/66/EC) and/or national legislation implementing those Directives.

If a chemical symbol is printed beneath the symbol shown above, in accordance with the Battery Directive, this indicates that a heavy metal (Hg = Mercury, Cd = Cadmium, Pb = Lead) is present in this battery or accumulator at a concentration above an applicable threshold specified in the Battery Directive.

This product should be handed over to a designated collection point, e.g., on an authorized one-for-one basis when you buy a new similar product or to an authorized collection site for recycling waste electrical and electronic equipment (EEE) and batteries and accumulators. Improper handling of this type of waste could have a possible impact on the environment and human health due to potentially hazardous substances that are generally associated with EEE. Your cooperation in the correct disposal of this product will contribute to the effective usage of natural resources.

For more information about the recycling of this product, please contact your local city office, waste authority, approved scheme or your household waste disposal service or visit www.canon-europe.com/weee, or www.canon-europe.com/battery.

CAUTION

RISK OF EXPLOSION IF BATTERY IS REPLACED BY AN INCORRECT TYPE.
DISPOSE OF USED BATTERIES ACCORDING TO LOCAL REGULATION.

The model number is PC2155 (including WLAN module model WM223). To identify your model, check the label on the bottom of the camera for a number beginning with PC.

Countries and Regions Permitting WLAN Use

- Use of WLAN is restricted in some countries and regions, and illegal use may be punishable under national or local regulations. To avoid violating WLAN regulations, visit the Canon website to check where use is allowed.

Note that Canon cannot be held liable for any problems arising from WLAN use in other countries and regions.

Doing any of the following may incur legal penalties:

- Altering or modifying the product
- Removing the certification labels from the product

Do not use the wireless LAN function of this product near medical equipment or other electronic equipment.

Use of the wireless LAN function near medical equipment or other electronic equipment may affect operation of those devices.

This product is installed with the WLAN Module which is certified to standards set by IDA Singapore. Hereby, Canon Inc., declares that this WM223 is in compliance with the essential requirements and other relevant provisions of Directive 1999/5/EC. Please contact the following address for the original Declaration of Conformity:

Complies with
IDA Standards
DB00671



CANON EUROPA N.V. Bovenkerkerweg 59, 1185 XB Amstelveen, The Netherlands
CANON INC. 30-2, Shimomaruko 3-chome, Ohta-ku, Tokyo 146-8501, Japan