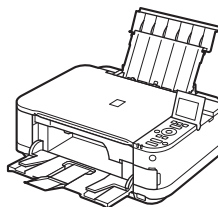




Canon Inkjet Photo All-In-One
PIXMA MG5120 series



Getting Started

Read Me First

Symbols Used in This Document



Prohibited actions.



Instructions including important information.

- In this guide, Windows 7 operating system is referred to as Windows 7 and Windows Vista operating system as Windows Vista.
- In this guide, the screens are based on Windows 7 Home Premium and Mac OS X v.10.6.x. (Unless noted otherwise, the screens are those of Windows 7.)

1 Preparation P.1



2 Install the Ink Tanks P.3



3 Load Paper P.7

4 Install the Software P.10



5 Try Using the Machine..... P.15
Print Photos from a Memory Card P.16
Try Copying P.19
Print Photos from a Computer P.20

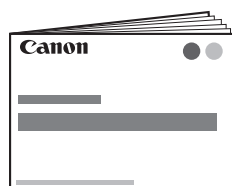
6 Specifications P.21



This machine contains both printed manuals and on-screen manuals to be viewed on a computer.
The on-screen manuals are included on the **Setup CD-ROM** and are installed during the software installation.



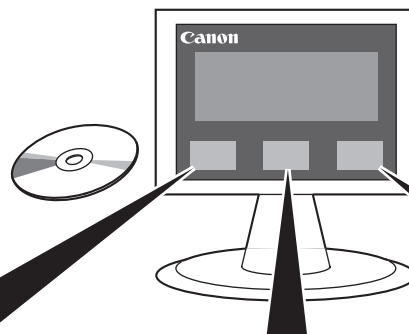
Printed Manuals



On-Screen Manuals

•Getting Started (this manual)

Describes how to set up and use your machine. Introduces the machine and its functions, the included manuals and application software.



Basic Guide

Describes basic operations and media, and gives an introduction to other functions available.



Advanced Guide

Describes various operating procedures to make full use of machine.



Troubleshooting

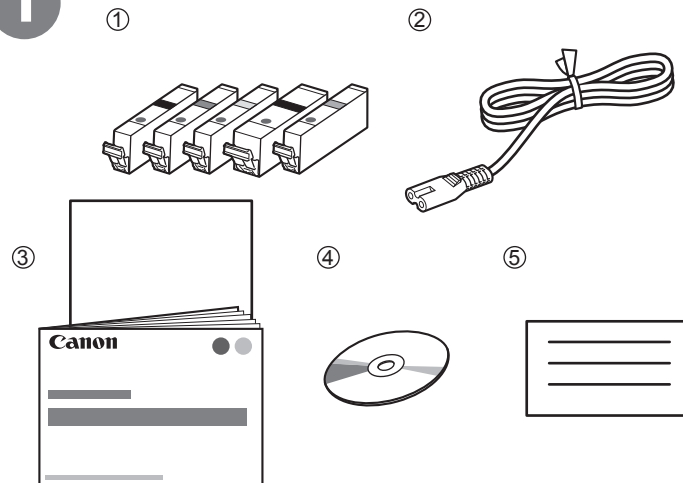
Describes troubleshooting tips for problems you may encounter when using the machine.

1 Preparation



- Do not install the machine where an object may fall on it. In addition, do not place any object on the top of the machine. It may fall into the machine when opening covers, resulting in malfunction.
- Paper Output Tray (A) automatically opens when printing starts. Do not place anything in front of the Paper Output Tray.

1



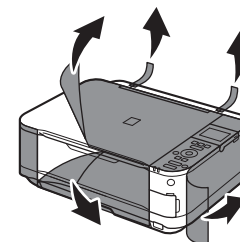
Make sure all the following items are supplied.

1. Ink tanks (5: BK, M, Y, PGBK, C)
2. Power cord
3. Manuals
4. Setup CD-ROM (containing the drivers, applications and on-screen manuals)
5. Other documents



- A USB cable is necessary to connect the machine with your computer.

2

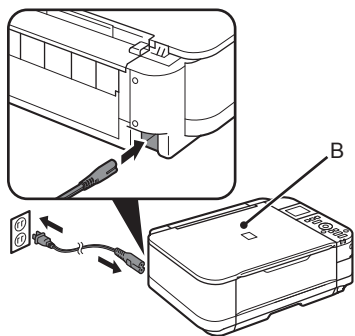


Remove all orange tape and protective materials from the inside and outside of the machine.



- The tape and protective materials may differ in shape and position from what they actually are.

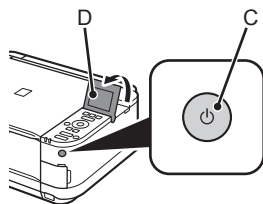
3



Insert the power cord into the connector on the left side at the back of the machine and into the wall outlet firmly.

- ▶ Do NOT connect the USB cable at this stage.
- Make sure that the Document Cover (B) is closed.

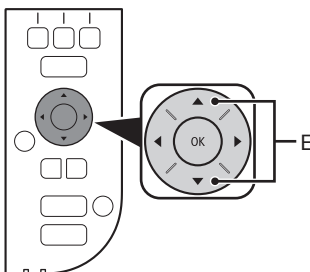
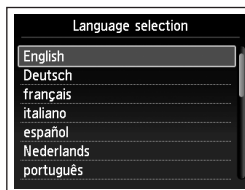
4



Press the **ON** button (C), then adjust the LCD (Liquid Crystal Display) (D) to a comfortable viewing angle.

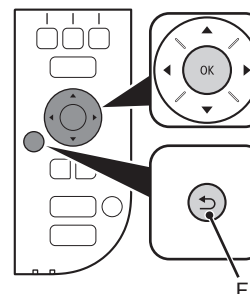
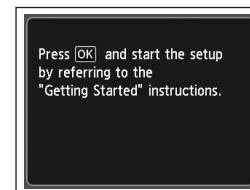
- The machine may make some operating noises. This is normal operation.
- It takes about 4 seconds for the **ON** button to work after the power cord is plugged in.

5



Use the ▲ or ▼ button (E) on the Operation Panel to select the language for the LCD, then press the **OK** button.

6



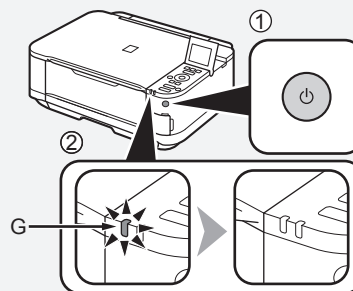
When this screen appears, press the **OK** button, then go to the next step.

- ▶ If an unintended language is displayed on the LCD, press the **Back** button (F) to return to the **Language selection** screen.

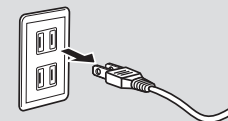
▶ When it is necessary to turn off the machine

Be sure to follow the procedure below.

1. Press the **ON** button to turn off the machine.
2. Make sure that the **POWER** lamp (G) is not lit. Operating noise may continue for up to 35 seconds until the machine turns off.

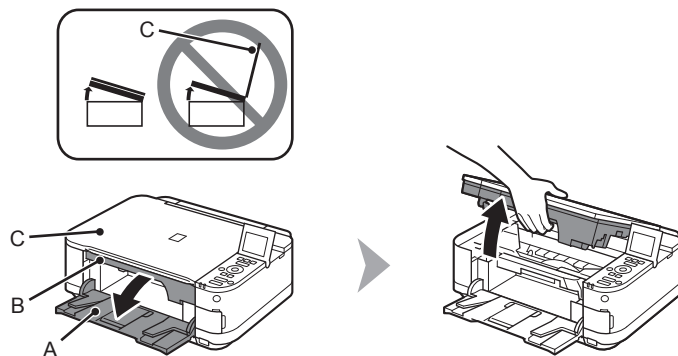


- ▶ When removing the power plug, make sure that the **POWER** lamp is not lit before removing the plug. Removing the power plug while the **POWER** lamp lights up or flashes may cause drying and clogging of the Print Head, resulting in poor printing.



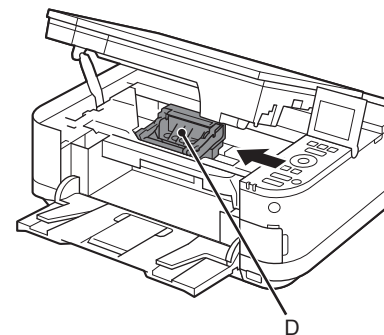
- The specification of the power cord differs for each country or region.

1



Open the Paper Output Tray (A), then lift the Scanning Unit (Cover) (B) until it stops. Close the Document Cover (C) and lift it with the Scanning Unit (Cover).

2

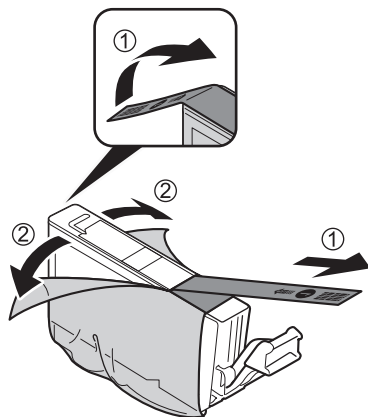


The Print Head Holder (D) moves to the installation position.

If the Print Head Holder does not move, make sure that the machine is turned on. For details, refer to ③ to ④ on page 2 in "1 Preparation".

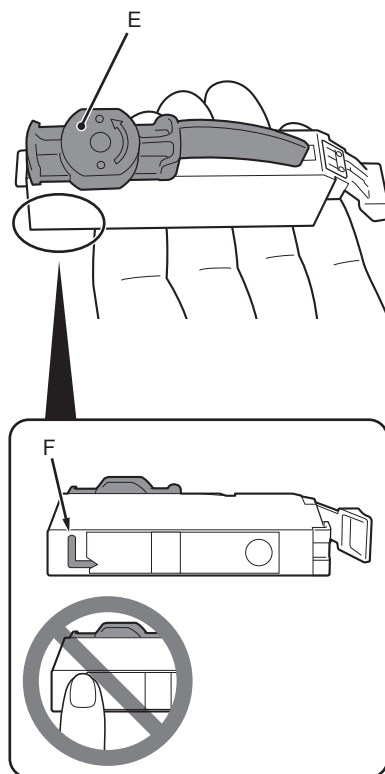
➡ Go to the next page.

3



1. Remove the orange tape completely.
2. Remove the protective film completely.

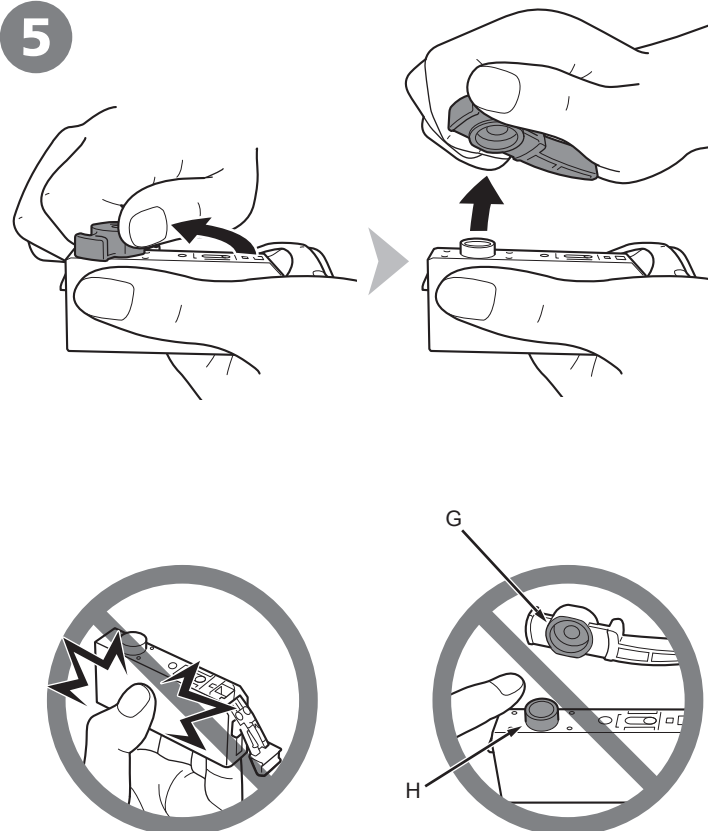
4



Hold the ink tank with the orange protective cap (E) pointing up while being careful not to block the L-shape air hole (F).

- ▶ Handle the ink tanks carefully. Do not drop or apply excessive pressure to them.
- Be sure to use the supplied ink tanks.
- If the orange tape remains on the L-shape air hole, ink may splash or the machine may not print properly.
- If you push the sides of the ink tank with the L-shape air hole blocked, ink may splash.

5

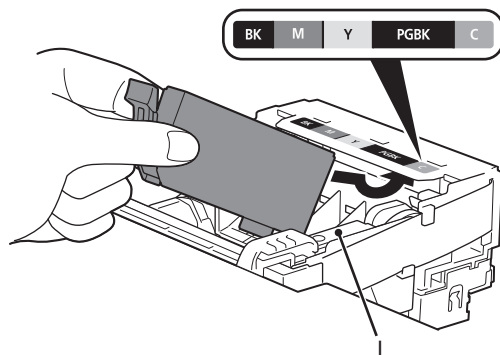


Hold the ink tank by its sides and slowly twist the orange protective cap 90 degrees horizontally to remove it off.

Do not push the sides of the ink tank.

- ▶ Do not touch the inside (G) of the orange protective cap or the open ink port (H). The ink may stain your hands if you touch them.

6



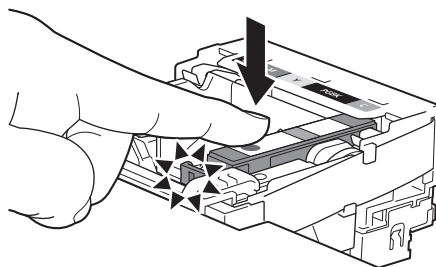
Tilt the ink tank, then insert it under the label and against the back end of the slot.

Make sure that the color of the label matches the ink tank.



- Install in a well-lit environment.
- Do not touch the Print Head Lock Lever (I).

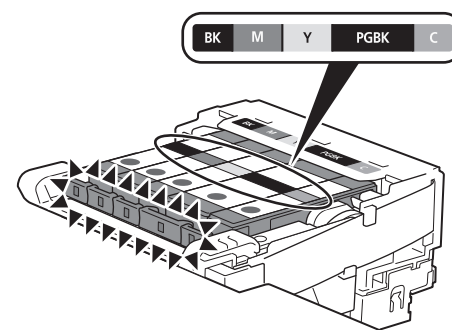
7



Press the **PUSH** mark on the ink tank firmly until it clicks.

When the installation is completed properly, the **Ink** lamp lights red.

8

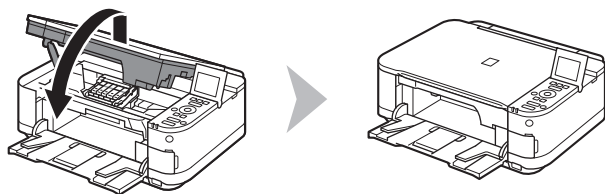


Install all the other ink tanks in the same way according to the color order indicated on the label.

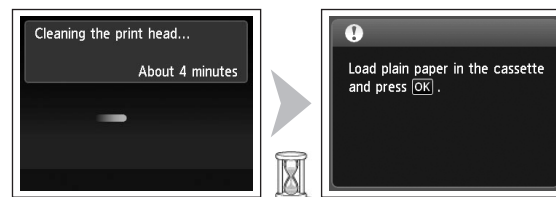
Make sure all the **Ink** lamps light red.



- Once you have installed the ink tanks, do not remove them unnecessarily.
- If the Print Head Holder moves to the right, close and reopen the Scanning Unit (Cover).



Lift the Scanning Unit (Cover) slightly, then gently close it.



Make sure that the LCD changes as shown in the illustration and go to the next step.

Load plain paper in the Cassette by referring to "3 Load Paper" on page 7 and press the **OK** button.



- It takes about 4 minutes before the LCD changes.
- The machine may make some operating noises when preparing to print. This is normal operation.

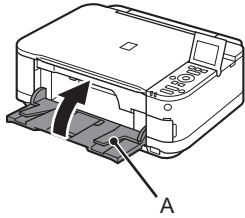


- If an error message is displayed on the LCD, make sure that the ink tanks are correctly installed.



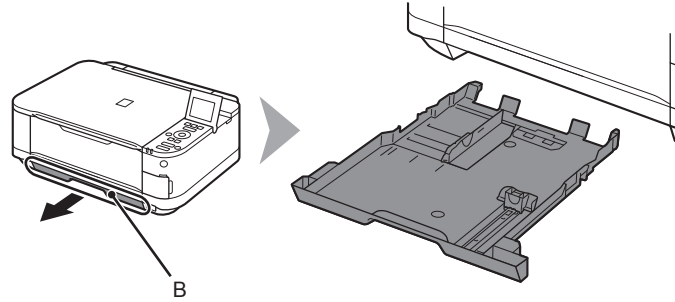
- The LCD will turn off if the machine is not operated for about 5 minutes. To restore the display, press any button except the **ON** button.

1



Close the Paper Output Tray (A).

2

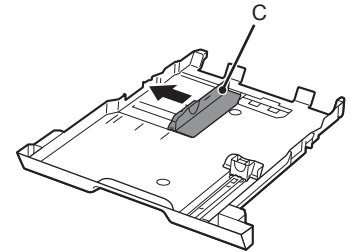


Pull out the Cassette (B).



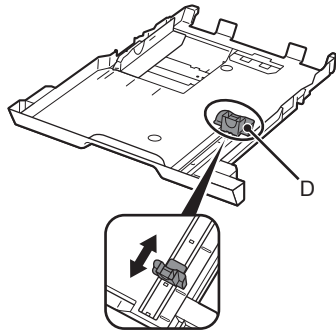
- The Cassette supports plain paper only. To load specialty paper including photo paper, refer from ③ on page 9.

3



Move the left Paper Guide (C) to the edge.

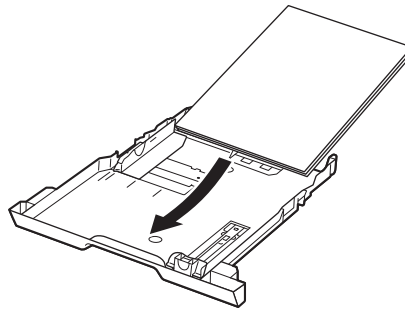
4



Slide the front Paper Guide (D) to align with the actual size of the paper.

The front Paper Guide will click and stop when it aligns with the corresponding mark of paper size.

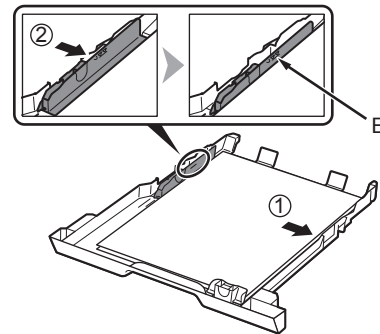
5



Load plain paper.

Load paper with the printing side facing down.

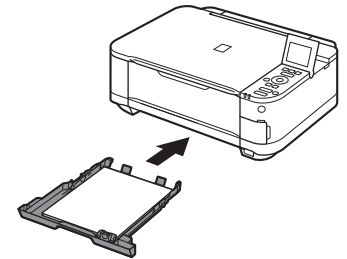
6



Align the paper to the right side of the Cassette (1), and slide the left Paper Guide completely against the left edge of the paper (2).

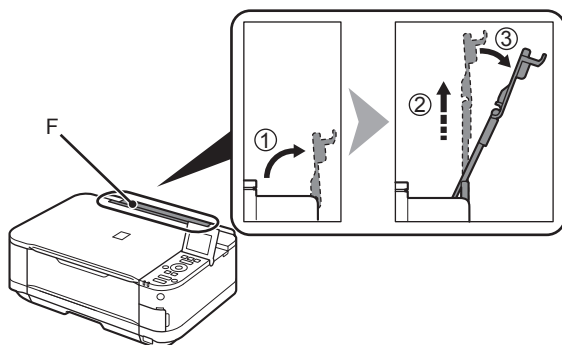
Make sure that the height of the paper stack does not exceed the line (E).

7



Insert the Cassette slowly into the machine until it clicks into place.

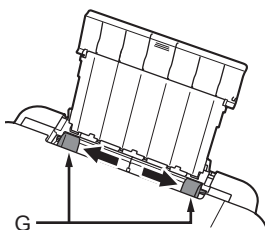
8



Prepare the Paper Support (F).

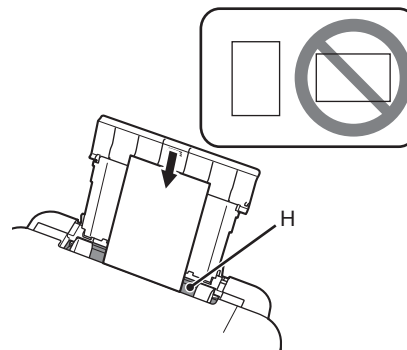
1. Open it.
2. Withdraw it upwards.
3. Tilt it back.

9



Move the Paper Guides (G) to both edges.

10



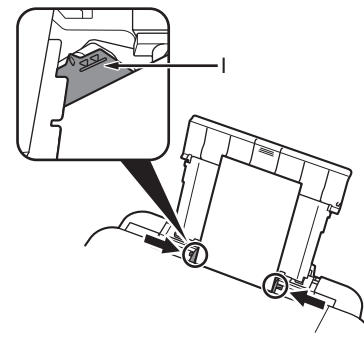
Load paper in the center of the Rear Tray (H).

Load paper in portrait orientation with the printing side facing up.



- Load specialty paper including photo paper in the Rear Tray.

11



Slide the left and right Paper Guides against both edges of the paper.

Make sure that the height of the paper stack does not exceed the line (I).



- For details on how to handle paper, refer to "Loading Paper" in the on-screen manual: **Basic Guide** after installation is complete.

Do not connect the USB cable yet.

- To use the machine by connecting it to a computer, software including the drivers needs to be copied (installed) to the computer's hard disk. The installation process takes about 20 minutes. (The installation time varies depending on the computer environment or the number of application software to be installed.)

- ▶ Quit all running applications before installation.
- Log on as the administrator (or a member of the Administrators group).
- Do not switch users during the installation process.
- Internet connection may be required during the installation. Connection fees may apply. Consult the internet service provider.
- It may be necessary to restart your computer during the installation process. Follow the on-screen instructions and do not remove the **Setup CD-ROM** during restarting. The installation resumes once your computer has restarted.
- For the system requirements, refer to "6 Specifications".

Windows

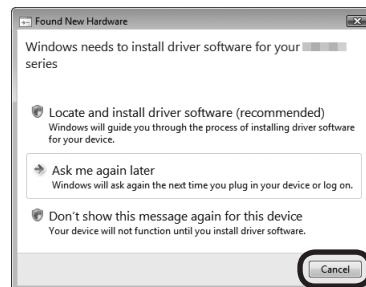
- If you connect the machine via USB cable before installing the software:

For Windows 7

1. Remove the USB cable connected to your computer.
2. Proceed to ① on page 11.

For Windows Vista/Windows XP

This dialog box may appear.

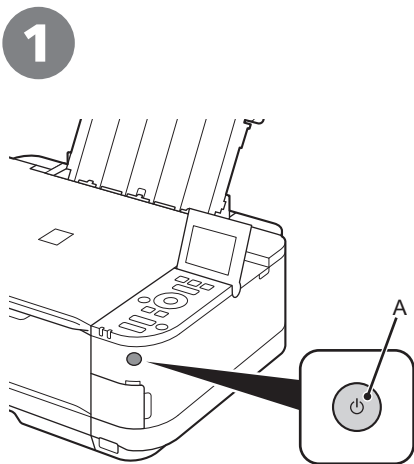


1. Remove the USB cable connected to your computer.
If the dialog box closes, proceed to ① on page 11.
2. Click **Cancel**.
3. Proceed to ① on page 11.

Windows

- Easy-WebPrint EX

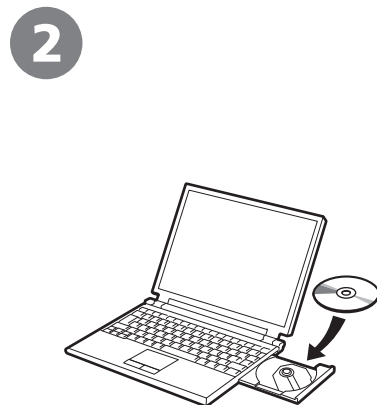
Easy-WebPrint EX is Web print software that is installed on the computer when installing the supplied software. Internet Explorer 7 or later is required to use this software. An Internet connection is required for installation.



Press the **ON** button (A) to **TURN OFF THE MACHINE**.

Operating noise may continue for up to 35 seconds until the machine turns off.

- Do NOT connect the USB cable to the computer and the machine yet. If you have already connected the cable, disconnect it now.



Turn on the computer, then insert the **Setup CD-ROM** into the CD-ROM drive.

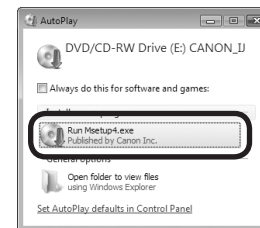
If you are using Windows, the setup program starts automatically.

For Windows

- If the program does not start automatically, double-click the CD-ROM icon in **Computer** or **My Computer**. When the CD-ROM contents appear, double-click **MSETUP4.EXE**.

Windows

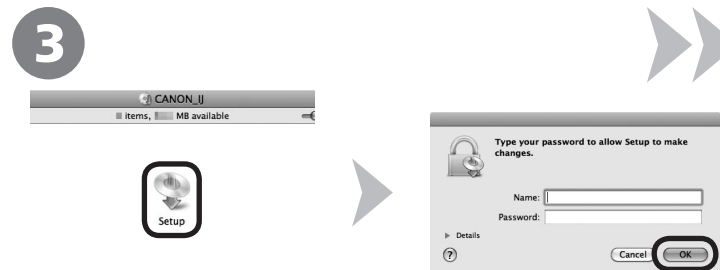
3 Windows 7/Windows Vista
Windows XP → **4**



Click **Run Msetup4.exe** on the **AutoPlay** screen, then click **Yes** or **Continue** on the **User Account Control** dialog box.

If the **User Account Control** dialog box reappears in following steps, click **Yes** or **Continue**.

Macintosh



Double-click the **Setup** icon of the CD-ROM folder to proceed to the following screen. Enter your administrator name and password, then click **OK**.

If the CD-ROM folder does not open automatically, double-click the CD-ROM icon on the desktop.


If you do not know your administrator name or password, click the help button, then follow the on-screen instructions.

4

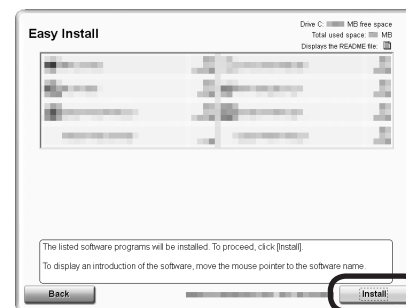


Click **Easy Install**.

The drivers, application software, and on-screen manuals are installed.

 • If you want to select particular items to install, click **Custom Install**.

5

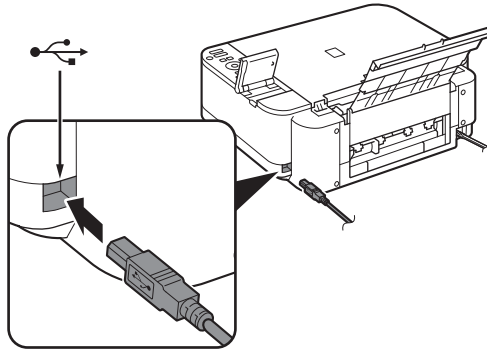


Click **Install**.

Follow any on-screen instructions to proceed with the software installation.



□ USB Port

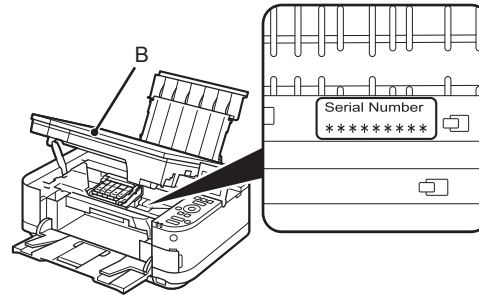


When the **Printer Connection** screen appears, connect the machine to the computer with a USB cable.

After connecting the cable, TURN ON THE MACHINE.

The USB Port is located on the right side at the back of the machine.

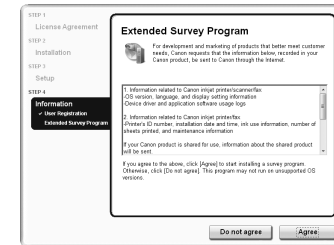
□ Necessary Information for the User Registration



When the serial number is not displayed on the registration screen automatically, input the serial number located inside the machine (as shown in the illustration).

- ▶ If the power is on, the Print Head Holder will move when the Scanning Unit (Cover) (B) is opened.

□ If the **Extended Survey Program** screen appears



If you can agree to Extended Survey Program, click **Agree**.
If you click **Do not agree**, the Extended Survey Program will not be installed. (This has no effect on the machine's functionality.)

6



Click **Exit** to complete the installation.

For Macintosh

It is necessary to restart the computer before scanning using the Operation Panel on the machine for the first time.

7



For Windows

Solution Menu EX starts.

For Macintosh

Solution Menu EX starts when clicking **OK** in the **Canon Solution Menu EX** dialog.

Remove the **Setup CD-ROM** and keep it in a safe place.



- The buttons displayed on Solution Menu EX may vary depending on the country or region of purchase.

Congratulations! Setup is complete. Proceed to page 15 for information regarding the Solution Menu EX and the on-screen manual or page 16 to start using the machine.

Windows

- Installing the XPS Printer Driver

In Windows 7 and Windows Vista SP1 or later, the XPS Printer Driver can be installed additionally. To install, perform from **1** in "4 Install the Software" on page 11. Click **Custom Install** in **4**, then select **XPS Printer Driver** in the **Custom Install** screen.

For details on useful functions of the XPS Printer Driver, refer to the on-screen manual: **Advanced Guide**.

Use the Operation Panel on the machine to print your own items easily. Various application software are installed on the computer along with the drivers. You can print creative items by correcting/enhancing photos using the application software. For details on how to use the application software and the machine, refer to the on-screen manual.

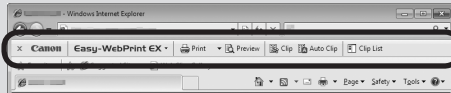


Windows

Easy-WebPrint EX

Use Easy-WebPrint EX to print web pages in Internet Explorer easily. Some of its features include:

- Printing a web page by reducing its size to fit the paper width automatically without cropping edges.
- Printing only the pages you want by selecting them from preview.
- Printing selected portions of various pages after editing them.



When Easy-WebPrint EX is installed, the Easy-WebPrint EX toolbar appears in Internet Explorer. This toolbar can be used any time while Internet Explorer is running.

For details on Easy-WebPrint EX, refer to the on-screen manual: Basic Guide.

Solution Menu EX

Solution Menu EX is a gateway to functions and information that allow you to make full use of the machine! For example,

- Open the on-screen manual.
- Open various application software.

How to open the on-screen manual



Click **Help & Settings**, then click this icon to open the on-screen manual.

How to start Solution Menu EX



Click this icon on the desktop (Windows) or on the Dock (Macintosh) to start Solution Menu EX.

For details on Solution Menu EX, refer to the on-screen manual: Basic Guide.

Supported Memory Cards (Adapter required for ■.)

Memory Stick Duo
Memory Stick PRO Duo



Memory Stick Micro



Memory Stick
Memory Stick PRO



SD Card
SDHC Card
MultiMediaCard
MultiMediaCard Plus



miniSD Card
miniSDHC Card



microSD Card
microSDHC Card



RS-MMC
MMCmobile



Compact Flash Card*
Microdrive



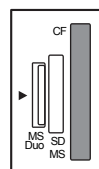
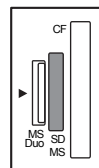
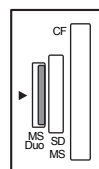
*TYPE I / TYPE II (3.3V)

xD-Picture Card
xD-Picture Card Type M
xD-Picture Card Type H



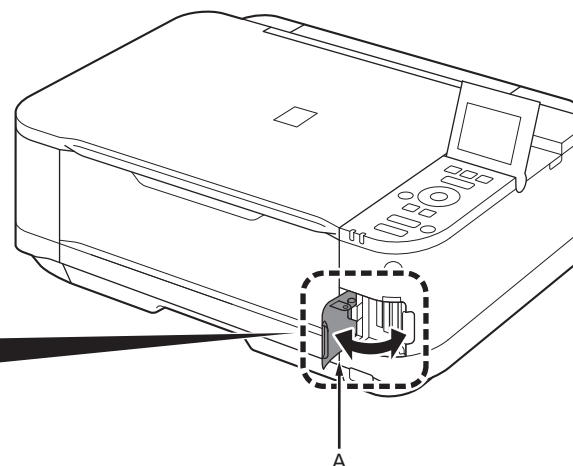
You can also print from USB flash drives. For details, refer to "Printing Photos" in the on-screen manual: **Basic Guide**.

Corresponding Card Slot

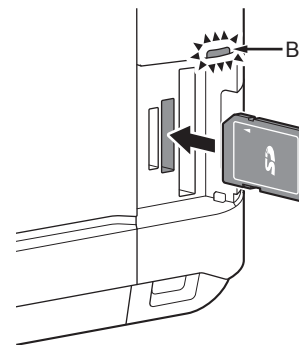


Card Slot Location

The Card Slot is located in the area indicated by the dotted line. Open the Card Slot Cover (A).

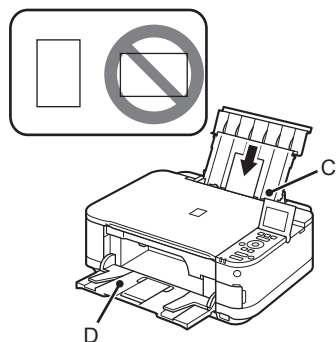


□ Inserting a Memory Card



- Insert a memory card with the labeled side facing left.
- Insert a memory card into the Card Slot in the direction of the arrow on the label, with the labeled side facing left.
- Insert only one memory card.
- The **Access** lamp (B) lights up when a memory card is inserted.

1



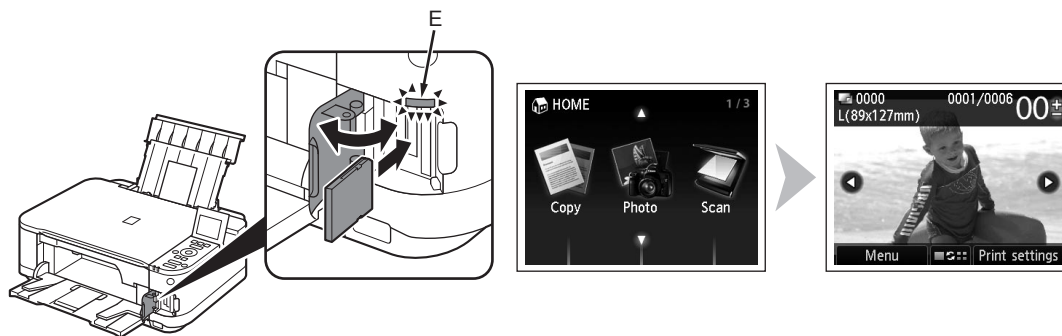
Load 4" x 6" (10 x 15 cm) photo paper in the Rear Tray (C) in portrait orientation with the printing side facing up.

Make sure that the Paper Output Tray (D) is open. If printing starts while the Paper Output Tray is closed, it will automatically open.



- For details, refer from 8 in "3 Load Paper" on page 9.

2

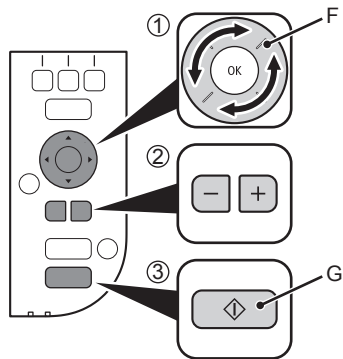


While the **HOME** screen appears, open the Card Slot Cover, insert a memory card into the Card Slot.

When inserting a memory card into the Card Slot, the photos on the memory card are read and the screen to specify photos and the number of copies to print appears.


Make sure that the **Access** lamp (E) has lit up, then close the Card Slot Cover.

3

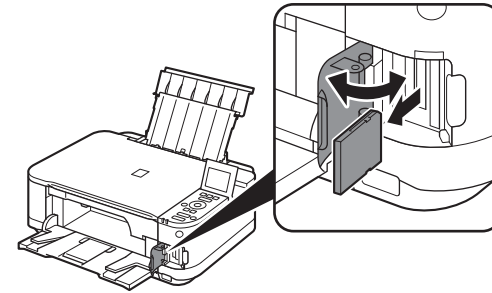


1. Rotate the Scroll Wheel (F) to display a photo to print.
2. Press the [+] or [-] button to specify the number of copies.
3. Press the **Color** button (G).

Printing will start.

 • When the machine is ready for printing, the **Color** button lights up.

4



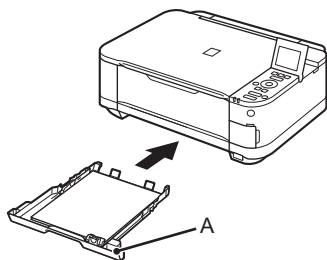
After printing, open the Card Slot Cover, pinch the memory card and pull it straight out.

After removing the memory card, close the Card Slot Cover.

- ▶ • Do not remove the memory card while the **Access** lamp is flashing. Saved data may be damaged.

For more information on printing from a memory card, refer to "Printing Photos" in the on-screen manual: **Basic Guide**.

1



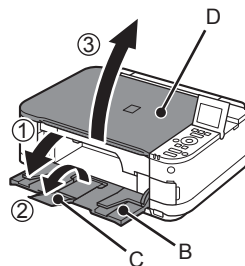
Load A4 or Letter-sized plain paper into the Cassette (A).

This section describes how to perform a standard copy.



- For details, refer to "3 Load Paper" on page 7.

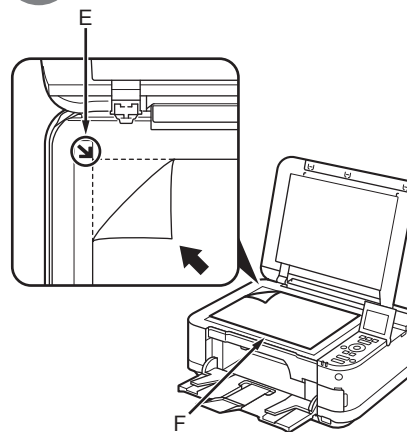
2



1. Open the Paper Output Tray (B).
2. Open the Output Tray Extension (C).
3. Open the Document Cover (D).

If printing starts while the Paper Output Tray is closed, it will automatically open.

3

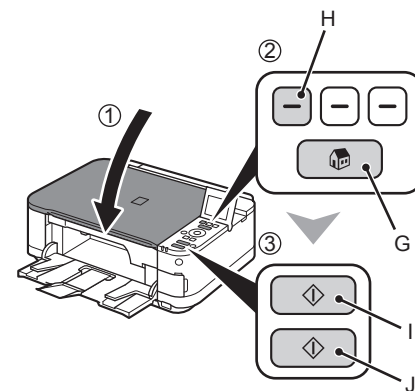


Place the document face-down and align it with the Alignment Mark (E).



- Do not place objects weighing 4.4 lb / 2.0 kg or more on the Platen Glass (F), or do not apply pressure to the document by pressing on it with a force exceeding 4.4 lb / 2.0 kg. The scanner may malfunction or the glass may break.

4



1. Close the Document Cover.
2. Press the **HOME** button (G), then press the left **FUNCTION** button (H).
3. Press the **Black** button (I) or the **Color** button (J).

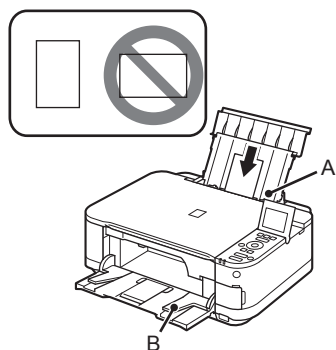
Copying will start. Do not open the Document Cover until copying is complete. Remove the document after printing.



- When the machine is ready for copying, the **Black** button and **Color** button light up.

For the procedure to copy on paper other than plain paper, refer to "Copying" in the on-screen manual: **Advanced Guide**.

1



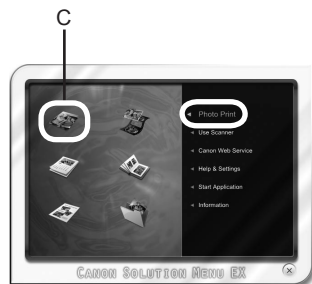
Load 4" x 6" (10 x 15 cm) photo paper in the Rear Tray (A) in portrait orientation with the printing side facing up.

Make sure that the Paper Output Tray (B) is open. If printing starts while the Paper Output Tray is closed, it will automatically open.

This section explains how to print borderless photos using 4" x 6" (10 x 15 cm) Photo Paper Plus Glossy II.

• For details, refer from 8 in "3 Load Paper" on page 9.

2

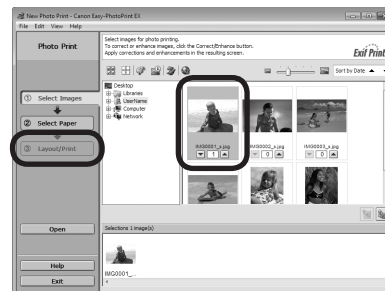


Start Solution Menu EX from the **Canon Solution Menu EX** icon on the desktop (Windows) or on the Dock (Macintosh), click **Photo Print**, then click **Photo Print** (C).

Easy-PhotoPrint EX starts.

• For details on starting Solution Menu EX, refer to page 15.

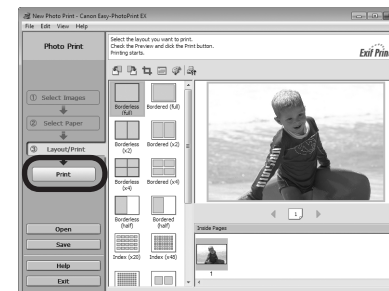
3



Select the image you want to print, then click **Layout/Print**.

When a photo is selected, the number of copies is set to "1".

4



Click **Print**.

If you are using Windows, printing will start.

If you are using Macintosh, click **Print** on the **Print** dialog box to start printing.

For more information, refer to the on-screen manual: **Advanced Guide**.




General Specifications
Printing resolution (dpi)
9600* (horizontal) X 2400 (vertical)
* Ink droplets can be placed with a pitch of 1/9600 inch at minimum.
Interface
USB Port: Hi-Speed USB *1
Direct Print Port: PictBridge Bluetooth v2.0 (Option) *2*3*4 USB flash drive
*1 A computer that complies with Hi-Speed USB standard is required. Since the Hi-Speed USB interface is fully upwardly compatible with USB 1.1, it can be used at USB 1.1.
*2 Maximum speed: 1.44 Mbps
*3 JPEG/PNG only
*4 Bluetooth connection is for printing only.
Print width
8 inches/203.2 mm (for Borderless Printing: 8.5 inches/216 mm)
Operating environment
Temperature: 5 to 35°C (41 to 95°F)
Humidity: 10 to 90% RH (no condensation)
Storage environment
Temperature: 0 to 40°C (32 to 104°F)
Humidity: 5 to 95% RH (no condensation)
Power supply
AC 100-240 V, 50/60 Hz
Power consumption
Printing (Copy): Approx. 18 W
Standby (minimum): Approx. 1.4 W*
OFF: Approx. 0.4 W*
* USB connection to PC
External dimensions
Approx. 17.9 (W) X 14.5 (D) X 6.3 (H) inches
Approx. 455 (W) X 368 (D) X 160 (H) mm
* With the Paper Support and Paper Output Tray retracted.
Weight
Approx. 7.8 kg (Approx. 17.2 lb)
* With the Print Head and ink tanks installed.
Print Head/Ink
Total 2,368 nozzles (PGBK 320 nozzles, Y/DyeBK each 256 nozzles, C/M each 768 nozzles)

Copy Specifications
Multiple copy
max. 99 pages
Intensity adjustment
9 positions, Auto intensity (AE copy)
Reduction/Enlargement
25 % - 400 % (1 % unit)
Scan Specifications
Scanner driver
TWAIN/WIA (for Windows 7/Windows Vista/Windows XP)
Maximum scanning size
A4/Letter, 8.5" X 11.7"/216 X 297 mm
Scanning resolution
Optical resolution (horizontal X vertical) max: 1200 dpi X 2400 dpi
Interpolated resolution max: 19200 dpi X 19200 dpi
Gradation (Input/Output)
Gray: 16 bit/8 bit
Color: 48 bit/24 bit (RGB each 16 bit/8 bit)

Specifications are subject to change without notice.

About Consumables

Consumables (ink tanks / FINE Cartridges) are available for 5 years after production has stopped.

Minimum System Requirements	
 Conform to the operating system's requirements when higher than those given here.	
	
Operating System/Processor/RAM	
Windows 7 1 GHz or faster 32-bit (x86) or 64-bit (x64) processor 1 GB (32-bit)/2 GB (64-bit) Windows Vista, Vista SP1, Vista SP2 1 GHz processor 512 MB Windows XP SP2, SP3 300 MHz processor 128 MB	Mac OS X v.10.6 Intel processor 1GB Mac OS X v.10.5 Intel processor, PowerPC G5, PowerPC G4 (867 MHz or faster) 512 MB Mac OS X v.10.4.11 Intel processor, PowerPC G5, PowerPC G4, PowerPC G3 256 MB
Browser	
Internet Explorer 6 or later	Safari 3
Hard Disk Space	
1.5 GB Note: For bundled software installation. The necessary amount of hard disk space may be changed without notice.	1.5 GB Note: For bundled software installation. The necessary amount of hard disk space may be changed without notice.
CD-ROM Drive	
Required	Required
Display	
SVGA 800 x 600	XGA 1024 x 768
<ul style="list-style-type: none">• Windows: Operation can only be guaranteed on a PC with Windows 7, Windows Vista or Windows XP pre-installed.• Windows: Uninstall software bundled with the Canon inkjet printer before upgrading from Windows Vista to Windows 7, then, install the bundled software again.• Some functions may not be available with Windows Media Center.• Macintosh: Hard Disk must be formatted as Mac OS Extended (Journaled) or Mac OS Extended.• Macintosh: After upgrading from Mac OS X v.10.5 or lower to Mac OS X v.10.6, install software bundled with the Canon inkjet printer.• Internet Explorer 7 or later is required to install Easy-WebPrint EX. For Windows use only.	

Getting Help from Canon

Email Tech Support — www.canontechsupport.com

Please note, from there you will need to select your product, then click on the "Support by Email" link under Tech Support.

Toll-Free Tech Support— 1-800-OK-CANON

This option provides live telephone technical support, free of service charges, Monday-Friday (excluding holidays), **during the warranty period**.

Telephone Device for the Deaf (TDD) support is available at 1-866-251-3752.

Ordering Information

The following ink tanks are compatible with this machine.



Order

PGI-225PGBK	4530B001
CLI-226BK	4546B001
CLI-226C	4547B001
CLI-226M	4548B001
CLI-226Y	4549B001

Call 1-800-OK-CANON to locate a dealer near you, or visit the Canon online store at www.shop.usa.canon.com

CANON U.S.A. INC.
One Canon Plaza, Lake Success, NY 11042 U.S.A.
www.usa.canon.com

- Microsoft is a registered trademark of Microsoft Corporation.
- Windows is a trademark or registered trademark of Microsoft Corporation in the U.S. and/or other countries.
- Windows Vista is a trademark or registered trademark of Microsoft Corporation in the U.S. and/or other countries.
- Internet Explorer is a trademark or registered trademark of Microsoft Corporation in the U.S. and/or other countries.
- Macintosh and Mac are trademarks of Apple Inc., registered in the U.S. and other countries.