



Online Manual

Quick Utility Toolbox Guide

Contents

- Symbols Used in This Document. 4
- Touch-enabled Device Users (Windows). 5
- Trademarks and Licenses. 6
 - Trademarks. 7
 - Licenses. 8
- General Notes (Quick Utility Toolbox). 28
- What You Can Do with Quick Utility Toolbox. 29
- Starting Software from Quick Utility Toolbox. 30
- Main Screen (MB series / iB series / GX series). 32
- Main Screen (PRO series / TX series / TM series / TA series / TZ series / GP series / TC series). 34
- Printer Management Dialog. 38
- Dock Icon. 41
- Destination Folder Settings. 42
 - Setting the Destination. 43
 - Folder Setting Utility Window. 48
 - Add Destination Folder/Edit Destination Folder Dialog. 50
- Troubleshooting. 52
- General Notes (Quick Utility Toolbox). 28
- What You Can Do with Quick Utility Toolbox. 29
- Starting Software from Quick Utility Toolbox. 30
- Main Screen (MB series / iB series / GX series). 32
- Main Screen (PRO series / TX series / TM series / TA series / TZ series / GP series / TC series). 34
- Printer Management Dialog. 38
- Dock Icon. 41
- Destination Folder Settings. 42
 - Setting the Destination. 43
 - Folder Setting Utility Window. 48
 - Add Destination Folder/Edit Destination Folder Dialog. 50

Symbols Used in This Document

Warning

Instructions that, if ignored, could result in death, serious personal injury, or property damage caused by incorrect operation of the equipment. These must be observed for safe operation.

Caution

Instructions that, if ignored, could result in personal injury or property damage caused by incorrect operation of the equipment. These must be observed for safe operation.

Important

Instructions including important information that must be observed to avoid damage and injury or improper use of the product. Be sure to read these instructions.

Note

Instructions including notes for operation and additional explanations.

Basics

Instructions explaining basic operations of your product.

Note

- Icons may vary depending on your product.

Touch-enabled Device Users (Windows)

For touch actions, you need to replace "right-click" in this document with the action set on the operating system. For example, if the action is set to "press and hold" on your operating system, replace "right-click" with "press and hold."

Trademarks and Licenses

- ▶ Trademarks
- ▶ Licenses

Trademarks

- Microsoft is a registered trademark of Microsoft Corporation.
- Windows is a trademark or registered trademark of Microsoft Corporation in the U.S. and/or other countries.
- Windows Vista is a trademark or registered trademark of Microsoft Corporation in the U.S. and/or other countries.
- Microsoft Edge and Microsoft Excel are either trademarks or registered trademarks of Microsoft Corporation in the U.S. and/or other countries.
- Internet Explorer is a trademark or registered trademark of Microsoft Corporation in the U.S. and/or other countries.
- Mac, Mac OS, macOS, OS X, AirPort, App Store, AirPrint, the AirPrint logo, Safari, Bonjour, iPad, iPad Air, iPad mini, iPadOS, iPhone and iPod touch are trademarks of Apple Inc., registered in the U.S. and other countries.
- IOS is a trademark or registered trademark of Cisco in the U.S. and other countries and is used under license.
- Google Cloud Print, Google Chrome, Chrome OS, Chromebook, Android, Google Drive, Google Apps and Google Analytics are either registered trademarks or trademarks of Google Inc. Google Play and Google Play Logo are trademarks of Google LLC.
- Adobe, Acrobat, Flash, Photoshop, Illustrator, Adobe RGB and Adobe RGB (1998) are either registered trademarks or trademarks of Adobe Systems Incorporated in the United States and/or other countries.
- Adobe, Acrobat, Flash, Photoshop, Photoshop Elements, Lightroom, Adobe RGB and Adobe RGB (1998) are either registered trademarks or trademarks of Adobe Systems Incorporated in the United States and/or other countries.
- Google, Google Home, and Android are trademarks of Google LLC.
- LINE Clova is a registered trademark of LINE Corporation.
- App Store is a trademark of Apple Inc., registered in the U.S. and other countries.
- Bluetooth is a trademark of Bluetooth SIG, Inc., U.S.A. and licensed to Canon Inc.
- Autodesk and AutoCAD are registered trademarks or trademarks of Autodesk, Inc., and/or its subsidiaries and/or affiliates in the USA and/or other countries.
- QR Code is a registered trademark of DENSO WAVE INCORPORATED in Japan and in other countries.
- The Mopria® word mark and the Mopria® Logo are registered and/or unregistered trademarks of Mopria Alliance, Inc. in the United States and other countries. Unauthorized use is strictly prohibited.
- HP-GL and HP-GL/2 are either registered trademarks or trademarks of HP Inc. in the United States and/or other countries.
- All other company names and products mentioned in this guide may be registered trademarks or trademarks of their respective companies.

▶▶▶ Note

- The formal name of Windows Vista is Microsoft Windows Vista operating system.

Licenses

Copyright (c) 2003-2015 Apple Inc. All rights reserved.

Redistribution and use in source and binary forms, with or without modification, are permitted provided that the following conditions are met:

1. Redistributions of source code must retain the above copyright notice, this list of conditions and the following disclaimer.
2. Redistributions in binary form must reproduce the above copyright notice, this list of conditions and the following disclaimer in the documentation and/or other materials provided with the distribution.
3. Neither the name of Apple Inc. ("Apple") nor the names of its contributors may be used to endorse or promote products derived from this software without specific prior written permission.

THIS SOFTWARE IS PROVIDED BY APPLE AND ITS CONTRIBUTORS "AS IS" AND ANY EXPRESS OR IMPLIED WARRANTIES, INCLUDING, BUT NOT LIMITED TO, THE IMPLIED WARRANTIES OF MERCHANTABILITY AND FITNESS FOR A PARTICULAR PURPOSE ARE DISCLAIMED. IN NO EVENT SHALL APPLE OR ITS CONTRIBUTORS BE LIABLE FOR ANY DIRECT, INDIRECT, INCIDENTAL, SPECIAL, EXEMPLARY, OR CONSEQUENTIAL DAMAGES (INCLUDING, BUT NOT LIMITED TO, PROCUREMENT OF SUBSTITUTE GOODS OR SERVICES; LOSS OF USE, DATA, OR PROFITS; OR BUSINESS INTERRUPTION) HOWEVER CAUSED AND ON ANY THEORY OF LIABILITY, WHETHER IN CONTRACT, STRICT LIABILITY, OR TORT (INCLUDING NEGLIGENCE OR OTHERWISE) ARISING IN ANY WAY OUT OF THE USE OF THIS SOFTWARE, EVEN IF ADVISED OF THE POSSIBILITY OF SUCH DAMAGE.

Apache License

Version 2.0, January 2004

<http://www.apache.org/licenses/>

TERMS AND CONDITIONS FOR USE, REPRODUCTION, AND DISTRIBUTION

1. Definitions.

"License" shall mean the terms and conditions for use, reproduction, and distribution as defined by Sections 1 through 9 of this document.

"Licensor" shall mean the copyright owner or entity authorized by the copyright owner that is granting the License.

"Legal Entity" shall mean the union of the acting entity and all other entities that control, are controlled by, or are under common control with that entity. For the purposes of this definition, "control" means (i) the power, direct or indirect, to cause the direction or management of such entity, whether by contract or otherwise, or (ii) ownership of fifty percent (50%) or more of the outstanding shares, or (iii) beneficial ownership of such entity.

"You" (or "Your") shall mean an individual or Legal Entity exercising permissions granted by this License.

"Source" form shall mean the preferred form for making modifications, including but not limited to software source code, documentation source, and configuration files.

"Object" form shall mean any form resulting from mechanical transformation or translation of a Source form, including but not limited to compiled object code, generated documentation, and conversions to other media types.

"Work" shall mean the work of authorship, whether in Source or Object form, made available under the License, as indicated by a copyright notice that is included in or attached to the work (an example is provided in the Appendix below).

"Derivative Works" shall mean any work, whether in Source or Object form, that is based on (or derived from) the Work and for which the editorial revisions, annotations, elaborations, or other modifications represent, as a whole, an original work of authorship. For the purposes of this License, Derivative Works shall not include works that remain separable from, or merely link (or bind by name) to the interfaces of, the Work and Derivative Works thereof.

"Contribution" shall mean any work of authorship, including the original version of the Work and any modifications or additions to that Work or Derivative Works thereof, that is intentionally submitted to Licensor for inclusion in the Work by the copyright owner or by an individual or Legal Entity authorized to submit on behalf of the copyright owner. For the purposes of this definition, "submitted" means any form of electronic, verbal, or written communication sent to the Licensor or its representatives, including but not limited to communication on electronic mailing lists, source code control systems, and issue tracking systems that are managed by, or on behalf of, the Licensor for the purpose of discussing and improving the Work, but excluding communication that is conspicuously marked or otherwise designated in writing by the copyright owner as "Not a Contribution."

"Contributor" shall mean Licensor and any individual or Legal Entity on behalf of whom a Contribution has been received by Licensor and subsequently incorporated within the Work.

2. Grant of Copyright License. Subject to the terms and conditions of this License, each Contributor hereby grants to You a perpetual, worldwide, non-exclusive, no-charge, royalty-free, irrevocable copyright license to reproduce, prepare Derivative Works of, publicly display, publicly perform, sublicense, and distribute the Work and such Derivative Works in Source or Object form.
3. Grant of Patent License. Subject to the terms and conditions of this License, each Contributor hereby grants to You a perpetual, worldwide, non-exclusive, no-charge, royalty-free, irrevocable (except as stated in this section) patent license to make, have made, use, offer to sell, sell, import, and otherwise transfer the Work, where such license applies only to those patent claims licensable by such Contributor that are necessarily infringed by their Contribution(s) alone or by combination of their Contribution(s) with the Work to which such Contribution(s) was submitted. If You institute patent litigation against any entity (including a cross-claim or counterclaim in a lawsuit) alleging that the Work or a Contribution incorporated within the Work constitutes direct or contributory patent infringement, then any patent licenses granted to You under this License for that Work shall terminate as of the date such litigation is filed.
4. Redistribution. You may reproduce and distribute copies of the Work or Derivative Works thereof in any medium, with or without modifications, and in Source or Object form, provided that You meet the following conditions:
 1. You must give any other recipients of the Work or Derivative Works a copy of this License; and
 2. You must cause any modified files to carry prominent notices stating that You changed the files; and

3. You must retain, in the Source form of any Derivative Works that You distribute, all copyright, patent, trademark, and attribution notices from the Source form of the Work, excluding those notices that do not pertain to any part of the Derivative Works; and
4. If the Work includes a "NOTICE" text file as part of its distribution, then any Derivative Works that You distribute must include a readable copy of the attribution notices contained within such NOTICE file, excluding those notices that do not pertain to any part of the Derivative Works, in at least one of the following places: within a NOTICE text file distributed as part of the Derivative Works; within the Source form or documentation, if provided along with the Derivative Works; or, within a display generated by the Derivative Works, if and wherever such third-party notices normally appear. The contents of the NOTICE file are for informational purposes only and do not modify the License. You may add Your own attribution notices within Derivative Works that You distribute, alongside or as an addendum to the NOTICE text from the Work, provided that such additional attribution notices cannot be construed as modifying the License.

You may add Your own copyright statement to Your modifications and may provide additional or different license terms and conditions for use, reproduction, or distribution of Your modifications, or for any such Derivative Works as a whole, provided Your use, reproduction, and distribution of the Work otherwise complies with the conditions stated in this License.

5. Submission of Contributions. Unless You explicitly state otherwise, any Contribution intentionally submitted for inclusion in the Work by You to the Licensor shall be under the terms and conditions of this License, without any additional terms or conditions. Notwithstanding the above, nothing herein shall supersede or modify the terms of any separate license agreement you may have executed with Licensor regarding such Contributions.
6. Trademarks. This License does not grant permission to use the trade names, trademarks, service marks, or product names of the Licensor, except as required for reasonable and customary use in describing the origin of the Work and reproducing the content of the NOTICE file.
7. Disclaimer of Warranty. Unless required by applicable law or agreed to in writing, Licensor provides the Work (and each Contributor provides its Contributions) on an "AS IS" BASIS, WITHOUT WARRANTIES OR CONDITIONS OF ANY KIND, either express or implied, including, without limitation, any warranties or conditions of TITLE, NON-INFRINGEMENT, MERCHANTABILITY, or FITNESS FOR A PARTICULAR PURPOSE. You are solely responsible for determining the appropriateness of using or redistributing the Work and assume any risks associated with Your exercise of permissions under this License.
8. Limitation of Liability. In no event and under no legal theory, whether in tort (including negligence), contract, or otherwise, unless required by applicable law (such as deliberate and grossly negligent acts) or agreed to in writing, shall any Contributor be liable to You for damages, including any direct, indirect, special, incidental, or consequential damages of any character arising as a result of this License or out of the use or inability to use the Work (including but not limited to damages for loss of goodwill, work stoppage, computer failure or malfunction, or any and all other commercial damages or losses), even if such Contributor has been advised of the possibility of such damages.
9. Accepting Warranty or Additional Liability. While redistributing the Work or Derivative Works thereof, You may choose to offer, and charge a fee for, acceptance of support, warranty, indemnity, or other liability obligations and/or rights consistent with this License. However, in accepting such obligations, You may act only on Your own behalf and on Your sole responsibility, not on behalf of any other Contributor, and only if You agree to indemnify, defend, and hold each Contributor harmless for any liability incurred by, or claims asserted against, such Contributor by reason of your accepting any

such warranty or additional liability.
END OF TERMS AND CONDITIONS

---- Part 1: CMU/UCD copyright notice: (BSD like) ----

Copyright 1989, 1991, 1992 by Carnegie Mellon University

Derivative Work - 1996, 1998-2000

Copyright 1996, 1998-2000 The Regents of the University of California

All Rights Reserved

Permission to use, copy, modify and distribute this software and its documentation for any purpose and without fee is hereby granted, provided that the above copyright notice appears in all copies and that both that copyright notice and this permission notice appear in supporting documentation, and that the name of CMU and The Regents of the University of California not be used in advertising or publicity pertaining to distribution of the software without specific written permission.

CMU AND THE REGENTS OF THE UNIVERSITY OF CALIFORNIA DISCLAIM ALL WARRANTIES WITH REGARD TO THIS SOFTWARE, INCLUDING ALL IMPLIED WARRANTIES OF MERCHANTABILITY AND FITNESS. IN NO EVENT SHALL CMU OR THE REGENTS OF THE UNIVERSITY OF CALIFORNIA BE LIABLE FOR ANY SPECIAL, INDIRECT OR CONSEQUENTIAL DAMAGES OR ANY DAMAGES WHATSOEVER RESULTING FROM THE LOSS OF USE, DATA OR PROFITS, WHETHER IN AN ACTION OF CONTRACT, NEGLIGENCE OR OTHER TORTIOUS ACTION, ARISING OUT OF OR IN CONNECTION WITH THE USE OR PERFORMANCE OF THIS SOFTWARE.

---- Part 2: Networks Associates Technology, Inc copyright notice (BSD) ----

Copyright (c) 2001-2003, Networks Associates Technology, Inc

All rights reserved.

Redistribution and use in source and binary forms, with or without modification, are permitted provided that the following conditions are met:

- * Redistributions of source code must retain the above copyright notice, this list of conditions and the following disclaimer.
- * Redistributions in binary form must reproduce the above copyright notice, this list of conditions and the following disclaimer in the documentation and/or other materials provided with the distribution.
- * Neither the name of the Networks Associates Technology, Inc nor the names of its contributors may be used to endorse or promote products derived from this software without specific prior written permission.

THIS SOFTWARE IS PROVIDED BY THE COPYRIGHT HOLDERS AND CONTRIBUTORS "AS IS" AND ANY EXPRESS OR IMPLIED WARRANTIES, INCLUDING, BUT NOT LIMITED TO, THE IMPLIED WARRANTIES OF MERCHANTABILITY AND FITNESS FOR A PARTICULAR PURPOSE ARE DISCLAIMED. IN NO EVENT SHALL THE COPYRIGHT HOLDERS OR CONTRIBUTORS BE LIABLE FOR ANY DIRECT, INDIRECT, INCIDENTAL, SPECIAL, EXEMPLARY, OR CONSEQUENTIAL DAMAGES (INCLUDING, BUT NOT LIMITED TO, PROCUREMENT OF SUBSTITUTE GOODS OR SERVICES; LOSS OF USE, DATA, OR PROFITS; OR BUSINESS INTERRUPTION) HOWEVER CAUSED AND ON ANY THEORY OF LIABILITY, WHETHER IN CONTRACT, STRICT LIABILITY, OR TORT (INCLUDING NEGLIGENCE OR OTHERWISE) ARISING IN ANY WAY OUT OF THE USE OF THIS SOFTWARE, EVEN IF ADVISED OF THE POSSIBILITY OF SUCH DAMAGE.

---- Part 3: Cambridge Broadband Ltd. copyright notice (BSD) -----

Portions of this code are copyright (c) 2001-2003, Cambridge Broadband Ltd.

All rights reserved.

Redistribution and use in source and binary forms, with or without modification, are permitted provided that the following conditions are met:

* Redistributions of source code must retain the above copyright notice, this list of conditions and the following disclaimer.

* Redistributions in binary form must reproduce the above copyright notice, this list of conditions and the following disclaimer in the documentation and/or other materials provided with the distribution.

* The name of Cambridge Broadband Ltd. may not be used to endorse or promote products derived from this software without specific prior written permission.

THIS SOFTWARE IS PROVIDED BY THE COPYRIGHT HOLDER ``AS IS" AND ANY EXPRESS OR IMPLIED WARRANTIES, INCLUDING, BUT NOT LIMITED TO, THE IMPLIED WARRANTIES OF MERCHANTABILITY AND FITNESS FOR A PARTICULAR PURPOSE ARE DISCLAIMED. IN NO EVENT SHALL THE COPYRIGHT HOLDER BE LIABLE FOR ANY DIRECT, INDIRECT, INCIDENTAL, SPECIAL, EXEMPLARY, OR CONSEQUENTIAL DAMAGES (INCLUDING, BUT NOT LIMITED TO, PROCUREMENT OF SUBSTITUTE GOODS OR SERVICES; LOSS OF USE, DATA, OR PROFITS; OR BUSINESS INTERRUPTION) HOWEVER CAUSED AND ON ANY THEORY OF LIABILITY, WHETHER IN CONTRACT, STRICT LIABILITY, OR TORT (INCLUDING NEGLIGENCE OR OTHERWISE) ARISING IN ANY WAY OUT OF THE USE OF THIS SOFTWARE, EVEN IF ADVISED OF THE POSSIBILITY OF SUCH DAMAGE.

---- Part 4: Sun Microsystems, Inc. copyright notice (BSD) -----

Copyright c 2003 Sun Microsystems, Inc., 4150 Network Circle, Santa Clara, California 95054, U.S.A. All rights reserved.

Use is subject to license terms below.

This distribution may include materials developed by third parties.

Sun, Sun Microsystems, the Sun logo and Solaris are trademarks or registered trademarks of Sun Microsystems, Inc. in the U.S. and other countries.

Redistribution and use in source and binary forms, with or without modification, are permitted provided that the following conditions are met:

* Redistributions of source code must retain the above copyright notice, this list of conditions and the following disclaimer.

* Redistributions in binary form must reproduce the above copyright notice, this list of conditions and the following disclaimer in the documentation and/or other materials provided with the distribution.

* Neither the name of the Sun Microsystems, Inc. nor the names of its contributors may be used to endorse or promote products derived from this software without specific prior written permission.

THIS SOFTWARE IS PROVIDED BY THE COPYRIGHT HOLDERS AND CONTRIBUTORS ``AS IS" AND ANY EXPRESS OR IMPLIED WARRANTIES, INCLUDING, BUT NOT LIMITED TO, THE IMPLIED WARRANTIES OF MERCHANTABILITY AND FITNESS FOR A PARTICULAR PURPOSE ARE DISCLAIMED. IN NO EVENT SHALL THE COPYRIGHT HOLDERS OR CONTRIBUTORS BE LIABLE FOR ANY DIRECT, INDIRECT, INCIDENTAL, SPECIAL, EXEMPLARY, OR CONSEQUENTIAL DAMAGES (INCLUDING, BUT NOT LIMITED TO, PROCUREMENT OF SUBSTITUTE GOODS OR

SERVICES; LOSS OF USE, DATA, OR PROFITS; OR BUSINESS INTERRUPTION) HOWEVER CAUSED AND ON ANY THEORY OF LIABILITY, WHETHER IN CONTRACT, STRICT LIABILITY, OR TORT (INCLUDING NEGLIGENCE OR OTHERWISE) ARISING IN ANY WAY OUT OF THE USE OF THIS SOFTWARE, EVEN IF ADVISED OF THE POSSIBILITY OF SUCH DAMAGE.

---- Part 5: Sparta, Inc copyright notice (BSD) ----

Copyright (c) 2003-2012, Sparta, Inc

All rights reserved.

Redistribution and use in source and binary forms, with or without modification, are permitted provided that the following conditions are met:

- * Redistributions of source code must retain the above copyright notice, this list of conditions and the following disclaimer.
- * Redistributions in binary form must reproduce the above copyright notice, this list of conditions and the following disclaimer in the documentation and/or other materials provided with the distribution.
- * Neither the name of Sparta, Inc nor the names of its contributors may be used to endorse or promote products derived from this software without specific prior written permission.

THIS SOFTWARE IS PROVIDED BY THE COPYRIGHT HOLDERS AND CONTRIBUTORS ``AS IS'' AND ANY EXPRESS OR IMPLIED WARRANTIES, INCLUDING, BUT NOT LIMITED TO, THE IMPLIED WARRANTIES OF MERCHANTABILITY AND FITNESS FOR A PARTICULAR PURPOSE ARE DISCLAIMED. IN NO EVENT SHALL THE COPYRIGHT HOLDERS OR CONTRIBUTORS BE LIABLE FOR ANY DIRECT, INDIRECT, INCIDENTAL, SPECIAL, EXEMPLARY, OR CONSEQUENTIAL DAMAGES (INCLUDING, BUT NOT LIMITED TO, PROCUREMENT OF SUBSTITUTE GOODS OR SERVICES; LOSS OF USE, DATA, OR PROFITS; OR BUSINESS INTERRUPTION) HOWEVER CAUSED AND ON ANY THEORY OF LIABILITY, WHETHER IN CONTRACT, STRICT LIABILITY, OR TORT (INCLUDING NEGLIGENCE OR OTHERWISE) ARISING IN ANY WAY OUT OF THE USE OF THIS SOFTWARE, EVEN IF ADVISED OF THE POSSIBILITY OF SUCH DAMAGE.

---- Part 6: Cisco/BUPTNIC copyright notice (BSD) ----

Copyright (c) 2004, Cisco, Inc and Information Network Center of Beijing University of Posts and Telecommunications.

All rights reserved.

Redistribution and use in source and binary forms, with or without modification, are permitted provided that the following conditions are met:

- * Redistributions of source code must retain the above copyright notice, this list of conditions and the following disclaimer.
- * Redistributions in binary form must reproduce the above copyright notice, this list of conditions and the following disclaimer in the documentation and/or other materials provided with the distribution.
- * Neither the name of Cisco, Inc, Beijing University of Posts and Telecommunications, nor the names of their contributors may be used to endorse or promote products derived from this software without specific prior written permission.

THIS SOFTWARE IS PROVIDED BY THE COPYRIGHT HOLDERS AND CONTRIBUTORS ``AS IS'' AND ANY EXPRESS OR IMPLIED WARRANTIES, INCLUDING, BUT NOT LIMITED TO, THE IMPLIED WARRANTIES OF MERCHANTABILITY AND FITNESS FOR A PARTICULAR PURPOSE

ARE DISCLAIMED. IN NO EVENT SHALL THE COPYRIGHT HOLDERS OR CONTRIBUTORS BE LIABLE FOR ANY DIRECT, INDIRECT, INCIDENTAL, SPECIAL, EXEMPLARY, OR CONSEQUENTIAL DAMAGES (INCLUDING, BUT NOT LIMITED TO, PROCUREMENT OF SUBSTITUTE GOODS OR SERVICES; LOSS OF USE, DATA, OR PROFITS; OR BUSINESS INTERRUPTION) HOWEVER CAUSED AND ON ANY THEORY OF LIABILITY, WHETHER IN CONTRACT, STRICT LIABILITY, OR TORT (INCLUDING NEGLIGENCE OR OTHERWISE) ARISING IN ANY WAY OUT OF THE USE OF THIS SOFTWARE, EVEN IF ADVISED OF THE POSSIBILITY OF SUCH DAMAGE.

---- Part 7: Fabasoft R&D Software GmbH & Co KG copyright notice (BSD) ----

Copyright (c) Fabasoft R&D Software GmbH & Co KG, 2003 oss@fabasoft.com

Author: Bernhard Penz <bernhard.penz@fabasoft.com>

Redistribution and use in source and binary forms, with or without modification, are permitted provided that the following conditions are met:

- * Redistributions of source code must retain the above copyright notice, this list of conditions and the following disclaimer.
- * Redistributions in binary form must reproduce the above copyright notice, this list of conditions and the following disclaimer in the documentation and/or other materials provided with the distribution.
- * The name of Fabasoft R&D Software GmbH & Co KG or any of its subsidiaries, brand or product names may not be used to endorse or promote products derived from this software without specific prior written permission.

THIS SOFTWARE IS PROVIDED BY THE COPYRIGHT HOLDER "AS IS" AND ANY EXPRESS OR IMPLIED WARRANTIES, INCLUDING, BUT NOT LIMITED TO, THE IMPLIED WARRANTIES OF MERCHANTABILITY AND FITNESS FOR A PARTICULAR PURPOSE ARE DISCLAIMED. IN NO EVENT SHALL THE COPYRIGHT HOLDER BE LIABLE FOR ANY DIRECT, INDIRECT, INCIDENTAL, SPECIAL, EXEMPLARY, OR CONSEQUENTIAL DAMAGES (INCLUDING, BUT NOT LIMITED TO, PROCUREMENT OF SUBSTITUTE GOODS OR SERVICES; LOSS OF USE, DATA, OR PROFITS; OR BUSINESS INTERRUPTION) HOWEVER CAUSED AND ON ANY THEORY OF LIABILITY, WHETHER IN CONTRACT, STRICT LIABILITY, OR TORT (INCLUDING NEGLIGENCE OR OTHERWISE) ARISING IN ANY WAY OUT OF THE USE OF THIS SOFTWARE, EVEN IF ADVISED OF THE POSSIBILITY OF SUCH DAMAGE.

---- Part 8: Apple Inc. copyright notice (BSD) ----

Copyright (c) 2007 Apple Inc. All rights reserved.

Redistribution and use in source and binary forms, with or without modification, are permitted provided that the following conditions are met:

1. Redistributions of source code must retain the above copyright notice, this list of conditions and the following disclaimer.
2. Redistributions in binary form must reproduce the above copyright notice, this list of conditions and the following disclaimer in the documentation and/or other materials provided with the distribution.
3. Neither the name of Apple Inc. ("Apple") nor the names of its contributors may be used to endorse or promote products derived from this software without specific prior written permission.

THIS SOFTWARE IS PROVIDED BY APPLE AND ITS CONTRIBUTORS "AS IS" AND ANY EXPRESS OR IMPLIED WARRANTIES, INCLUDING, BUT NOT LIMITED TO, THE IMPLIED WARRANTIES

OF MERCHANTABILITY AND FITNESS FOR A PARTICULAR PURPOSE ARE DISCLAIMED. IN NO EVENT SHALL APPLE OR ITS CONTRIBUTORS BE LIABLE FOR ANY DIRECT, INDIRECT, INCIDENTAL, SPECIAL, EXEMPLARY, OR CONSEQUENTIAL DAMAGES (INCLUDING, BUT NOT LIMITED TO, PROCUREMENT OF SUBSTITUTE GOODS OR SERVICES; LOSS OF USE, DATA, OR PROFITS; OR BUSINESS INTERRUPTION) HOWEVER CAUSED AND ON ANY THEORY OF LIABILITY, WHETHER IN CONTRACT, STRICT LIABILITY, OR TORT (INCLUDING NEGLIGENCE OR OTHERWISE) ARISING IN ANY WAY OUT OF THE USE OF THIS SOFTWARE, EVEN IF ADVISED OF THE POSSIBILITY OF SUCH DAMAGE.

---- Part 9: ScienceLogic, LLC copyright notice (BSD) ----

Copyright (c) 2009, ScienceLogic, LLC

All rights reserved.

Redistribution and use in source and binary forms, with or without modification, are permitted provided that the following conditions are met:

- * Redistributions of source code must retain the above copyright notice, this list of conditions and the following disclaimer.
- * Redistributions in binary form must reproduce the above copyright notice, this list of conditions and the following disclaimer in the documentation and/or other materials provided with the distribution.
- * Neither the name of ScienceLogic, LLC nor the names of its contributors may be used to endorse or promote products derived from this software without specific prior written permission.

THIS SOFTWARE IS PROVIDED BY THE COPYRIGHT HOLDERS AND CONTRIBUTORS "AS IS" AND ANY EXPRESS OR IMPLIED WARRANTIES, INCLUDING, BUT NOT LIMITED TO, THE IMPLIED WARRANTIES OF MERCHANTABILITY AND FITNESS FOR A PARTICULAR PURPOSE ARE DISCLAIMED. IN NO EVENT SHALL THE COPYRIGHT HOLDERS OR CONTRIBUTORS BE LIABLE FOR ANY DIRECT, INDIRECT, INCIDENTAL, SPECIAL, EXEMPLARY, OR CONSEQUENTIAL DAMAGES (INCLUDING, BUT NOT LIMITED TO, PROCUREMENT OF SUBSTITUTE GOODS OR SERVICES; LOSS OF USE, DATA, OR PROFITS; OR BUSINESS INTERRUPTION) HOWEVER CAUSED AND ON ANY THEORY OF LIABILITY, WHETHER IN CONTRACT, STRICT LIABILITY, OR TORT (INCLUDING NEGLIGENCE OR OTHERWISE) ARISING IN ANY WAY OUT OF THE USE OF THIS SOFTWARE, EVEN IF ADVISED OF THE POSSIBILITY OF SUCH DAMAGE.

MIT License

Copyright (c) 1998, 1999, 2000 Thai Open Source Software Center Ltd

Permission is hereby granted, free of charge, to any person obtaining a copy of this software and associated documentation files (the "Software"), to deal in the Software without restriction, including without limitation the rights to use, copy, modify, merge, publish, distribute, sublicense, and/or sell copies of the Software, and to permit persons to whom the Software is furnished to do so, subject to the following conditions:

The above copyright notice and this permission notice shall be included in all copies or substantial portions of the Software.

THE SOFTWARE IS PROVIDED "AS IS", WITHOUT WARRANTY OF ANY KIND, EXPRESS OR IMPLIED, INCLUDING BUT NOT LIMITED TO THE WARRANTIES OF MERCHANTABILITY, FITNESS FOR A PARTICULAR PURPOSE AND NONINFRINGEMENT. IN NO EVENT SHALL THE AUTHORS

OR COPYRIGHT HOLDERS BE LIABLE FOR ANY CLAIM, DAMAGES OR OTHER LIABILITY, WHETHER IN AN ACTION OF CONTRACT, TORT OR OTHERWISE, ARISING FROM, OUT OF OR IN CONNECTION WITH THE SOFTWARE OR THE USE OR OTHER DEALINGS IN THE SOFTWARE.

Copyright 2000 Computing Research Labs, New Mexico State University

Copyright 2001-2015 Francesco Zappa Nardelli

Permission is hereby granted, free of charge, to any person obtaining a copy of this software and associated documentation files (the "Software"), to deal in the Software without restriction, including without limitation the rights to use, copy, modify, merge, publish, distribute, sublicense, and/or sell copies of the Software, and to permit persons to whom the Software is furnished to do so, subject to the following conditions:

The above copyright notice and this permission notice shall be included in all copies or substantial portions of the Software.

THE SOFTWARE IS PROVIDED "AS IS", WITHOUT WARRANTY OF ANY KIND, EXPRESS OR IMPLIED, INCLUDING BUT NOT LIMITED TO THE WARRANTIES OF MERCHANTABILITY, FITNESS FOR A PARTICULAR PURPOSE AND NONINFRINGEMENT. IN NO EVENT SHALL THE COMPUTING RESEARCH LAB OR NEW MEXICO STATE UNIVERSITY BE LIABLE FOR ANY CLAIM, DAMAGES OR OTHER LIABILITY, WHETHER IN AN ACTION OF CONTRACT, TORT OR OTHERWISE, ARISING FROM, OUT OF OR IN CONNECTION WITH THE SOFTWARE OR THE USE OR OTHER DEALINGS IN THE SOFTWARE.

Written by Joel Sherrill <joel@OARcorp.com>.

COPYRIGHT (c) 1989-2000.

On-Line Applications Research Corporation (OAR).

Permission to use, copy, modify, and distribute this software for any purpose without fee is hereby granted, provided that this entire notice is included in all copies of any software which is or includes a copy or modification of this software.

THIS SOFTWARE IS BEING PROVIDED "AS IS", WITHOUT ANY EXPRESS OR IMPLIED WARRANTY. IN PARTICULAR, THE AUTHOR MAKES NO REPRESENTATION OR WARRANTY OF ANY KIND CONCERNING THE MERCHANTABILITY OF THIS SOFTWARE OR ITS FITNESS FOR ANY PARTICULAR PURPOSE.

(1) Red Hat Incorporated

Copyright (c) 1994-2009 Red Hat, Inc. All rights reserved.

This copyrighted material is made available to anyone wishing to use, modify, copy, or redistribute it subject to the terms and conditions of the BSD License. This program is distributed in the hope that it will be useful, but WITHOUT ANY WARRANTY expressed or implied, including the implied warranties of MERCHANTABILITY or FITNESS FOR A PARTICULAR PURPOSE. A copy of this license is available at <http://www.opensource.org/licenses>. Any Red Hat trademarks that are incorporated in the source code or documentation are not subject to the BSD License and may only be used or replicated with the express permission of Red Hat, Inc.

(2) University of California, Berkeley

Copyright (c) 1981-2000 The Regents of the University of California.

All rights reserved.

Redistribution and use in source and binary forms, with or without modification, are permitted provided that the following conditions are met:

- * Redistributions of source code must retain the above copyright notice, this list of conditions and the following disclaimer.
- * Redistributions in binary form must reproduce the above copyright notice, this list of conditions and the following disclaimer in the documentation and/or other materials provided with the distribution.
- * Neither the name of the University nor the names of its contributors may be used to endorse or promote products derived from this software without specific prior written permission.

THIS SOFTWARE IS PROVIDED BY THE COPYRIGHT HOLDERS AND CONTRIBUTORS "AS IS" AND ANY EXPRESS OR IMPLIED WARRANTIES, INCLUDING, BUT NOT LIMITED TO, THE IMPLIED WARRANTIES OF MERCHANTABILITY AND FITNESS FOR A PARTICULAR PURPOSE ARE DISCLAIMED. IN NO EVENT SHALL THE COPYRIGHT OWNER OR CONTRIBUTORS BE LIABLE FOR ANY DIRECT, INDIRECT, INCIDENTAL, SPECIAL, EXEMPLARY, OR CONSEQUENTIAL DAMAGES (INCLUDING, BUT NOT LIMITED TO, PROCUREMENT OF SUBSTITUTE GOODS OR SERVICES; LOSS OF USE, DATA, OR PROFITS; OR BUSINESS INTERRUPTION) HOWEVER CAUSED AND ON ANY THEORY OF LIABILITY, WHETHER IN CONTRACT, STRICT LIABILITY, OR TORT (INCLUDING NEGLIGENCE OR OTHERWISE) ARISING IN ANY WAY OUT OF THE USE OF THIS SOFTWARE, EVEN IF ADVISED OF THE POSSIBILITY OF SUCH DAMAGE.

The FreeType Project LICENSE

2006-Jan-27

Copyright 1996-2002, 2006 by

David Turner, Robert Wilhelm, and Werner Lemberg

Introduction

=====

The FreeType Project is distributed in several archive packages; some of them may contain, in addition to the FreeType font engine, various tools and contributions which rely on, or relate to, the FreeType Project.

This license applies to all files found in such packages, and which do not fall under their own explicit license. The license affects thus the FreeType font engine, the test programs, documentation and makefiles, at the very least.

This license was inspired by the BSD, Artistic, and IJG (Independent JPEG Group) licenses, which all encourage inclusion and use of free software in commercial and freeware products alike. As a consequence, its main points are that:

- o We don't promise that this software works. However, we will be interested in any kind of bug reports. (``as is'` distribution)
- o You can use this software for whatever you want, in parts or full form, without having to pay us. (``royalty-free'` usage)
- o You may not pretend that you wrote this software. If you use it, or only parts of it, in a program, you must acknowledge somewhere in your documentation that you have used the FreeType code. (``credits'`)

We specifically permit and encourage the inclusion of this software, with or without modifications, in commercial products.

We disclaim all warranties covering The FreeType Project and assume no liability related to The FreeType Project.

Finally, many people asked us for a preferred form for a credit/disclaimer to use in compliance with this license. We thus encourage you to use the following text:

""

Portions of this software are copyright © <year> The FreeType Project (www.freetype.org). All rights reserved.

""

Please replace <year> with the value from the FreeType version you actually use.

Legal Terms

=====

0. Definitions

Throughout this license, the terms 'package', 'FreeType Project', and 'FreeType archive' refer to the set of files originally distributed by the authors (David Turner, Robert Wilhelm, and Werner Lemberg) as the 'FreeType Project', be they named as alpha, beta or final release.

'You' refers to the licensee, or person using the project, where 'using' is a generic term including compiling the project's source code as well as linking it to form a 'program' or 'executable'.

This program is referred to as 'a program using the FreeType engine'.

This license applies to all files distributed in the original FreeType Project, including all source code, binaries and documentation, unless otherwise stated in the file in its original, unmodified form as distributed in the original archive.

If you are unsure whether or not a particular file is covered by this license, you must contact us to verify this.

The FreeType Project is copyright (C) 1996-2000 by David Turner, Robert Wilhelm, and Werner Lemberg. All rights reserved except as specified below.

1. No Warranty

THE FREETYPE PROJECT IS PROVIDED 'AS IS' WITHOUT WARRANTY OF ANY KIND, EITHER EXPRESS OR IMPLIED, INCLUDING, BUT NOT LIMITED TO, WARRANTIES OF MERCHANTABILITY AND FITNESS FOR A PARTICULAR PURPOSE. IN NO EVENT WILL ANY OF THE AUTHORS OR COPYRIGHT HOLDERS BE LIABLE FOR ANY DAMAGES CAUSED BY THE USE OR THE INABILITY TO USE, OF THE FREETYPE PROJECT.

2. Redistribution

This license grants a worldwide, royalty-free, perpetual and irrevocable right and license to use, execute, perform, compile, display, copy, create derivative works of, distribute and sublicense the FreeType Project

(in both source and object code forms) and derivative works thereof for any purpose; and to authorize others to exercise some or all of the rights granted herein, subject to the following conditions:

- o Redistribution of source code must retain this license file ('FTL.TXT') unaltered; any additions, deletions or changes to the original files must be clearly indicated in accompanying documentation. The copyright notices of the unaltered, original files must be preserved in all copies of source files.

- o Redistribution in binary form must provide a disclaimer that states that the software is based in part of the work of the FreeType Team, in the distribution documentation. We also encourage you to put an URL to the FreeType web page in your documentation, though this isn't mandatory.

These conditions apply to any software derived from or based on the FreeType Project, not just the unmodified files. If you use our work, you must acknowledge us. However, no fee need be paid to us.

3. Advertising

Neither the FreeType authors and contributors nor you shall use the name of the other for commercial, advertising, or promotional purposes without specific prior written permission.

We suggest, but do not require, that you use one or more of the following phrases to refer to this software in your documentation or advertising materials: 'FreeType Project', 'FreeType Engine', 'FreeType library', or 'FreeType Distribution'.

As you have not signed this license, you are not required to accept it. However, as the FreeType Project is copyrighted material, only this license, or another one contracted with the authors, grants you the right to use, distribute, and modify it.

Therefore, by using, distributing, or modifying the FreeType Project, you indicate that you understand and accept all the terms of this license.

4. Contacts

There are two mailing lists related to FreeType:

- o freetype@nongnu.org

Discusses general use and applications of FreeType, as well as future and wanted additions to the library and distribution.

If you are looking for support, start in this list if you haven't found anything to help you in the documentation.

- o freetype-devel@nongnu.org

Discusses bugs, as well as engine internals, design issues, specific licenses, porting, etc.

Our home page can be found at

<http://www.freetype.org>

--- end of FTL.TXT ---

The TWAIN Toolkit is distributed as is. The developer and distributors of the TWAIN Toolkit expressly disclaim all implied, express or statutory warranties including, without limitation, the implied warranties of merchantability, noninfringement of third party rights and fitness for a particular purpose. Neither the

developers nor the distributors will be liable for damages, whether direct, indirect, special, incidental, or consequential, as a result of the reproduction, modification, distribution or other use of the TWAIN Toolkit.

JSON for Modern C++

Copyright (c) 2013-2017 Niels Lohmann

Permission is hereby granted, free of charge, to any person obtaining a copy of this software and associated documentation files (the "Software"), to deal in the Software without restriction, including without limitation the rights to use, copy, modify, merge, publish, distribute, sublicense, and/or sell copies of the Software, and to permit persons to whom the Software is furnished to do so, subject to the following conditions:

The above copyright notice and this permission notice shall be included in all copies or substantial portions of the Software.

THE SOFTWARE IS PROVIDED "AS IS", WITHOUT WARRANTY OF ANY KIND, EXPRESS OR IMPLIED, INCLUDING BUT NOT LIMITED TO THE WARRANTIES OF MERCHANTABILITY, FITNESS FOR A PARTICULAR PURPOSE AND NONINFRINGEMENT. IN NO EVENT SHALL THE AUTHORS OR COPYRIGHT HOLDERS BE LIABLE FOR ANY CLAIM, DAMAGES OR OTHER LIABILITY, WHETHER IN AN ACTION OF CONTRACT, TORT OR OTHERWISE, ARISING FROM, OUT OF OR IN CONNECTION WITH THE SOFTWARE OR THE USE OR OTHER DEALINGS IN THE SOFTWARE.

Copyright (c) 2011 - 2015 ARM LIMITED

All rights reserved.

Redistribution and use in source and binary forms, with or without modification, are permitted provided that the following conditions are met:

- Redistributions of source code must retain the above copyright notice, this list of conditions and the following disclaimer.
- Redistributions in binary form must reproduce the above copyright notice, this list of conditions and the following disclaimer in the documentation and/or other materials provided with the distribution.
- Neither the name of ARM nor the names of its contributors may be used to endorse or promote products derived from this software without specific prior written permission.

THIS SOFTWARE IS PROVIDED BY THE COPYRIGHT HOLDERS AND CONTRIBUTORS "AS IS" AND ANY EXPRESS OR IMPLIED WARRANTIES, INCLUDING, BUT NOT LIMITED TO, THE IMPLIED WARRANTIES OF MERCHANTABILITY AND FITNESS FOR A PARTICULAR PURPOSE ARE DISCLAIMED. IN NO EVENT SHALL COPYRIGHT HOLDERS AND CONTRIBUTORS BE LIABLE FOR ANY DIRECT, INDIRECT, INCIDENTAL, SPECIAL, EXEMPLARY, OR CONSEQUENTIAL DAMAGES (INCLUDING, BUT NOT LIMITED TO, PROCUREMENT OF SUBSTITUTE GOODS OR SERVICES; LOSS OF USE, DATA, OR PROFITS; OR BUSINESS INTERRUPTION) HOWEVER CAUSED AND ON ANY THEORY OF LIABILITY, WHETHER IN CONTRACT, STRICT LIABILITY, OR TORT (INCLUDING NEGLIGENCE OR OTHERWISE) ARISING IN ANY WAY OUT OF THE USE OF THIS SOFTWARE, EVEN IF ADVISED OF THE POSSIBILITY OF SUCH DAMAGE.

Copyright (c) 2014, Kenneth MacKay

All rights reserved.

Redistribution and use in source and binary forms, with or without modification, are permitted provided that the following conditions are met:

- * Redistributions of source code must retain the above copyright notice, this list of conditions and the following disclaimer.

- * Redistributions in binary form must reproduce the above copyright notice, this list of conditions and the following disclaimer in the documentation and/or other materials provided with the distribution.

THIS SOFTWARE IS PROVIDED BY THE COPYRIGHT HOLDERS AND CONTRIBUTORS "AS IS" AND ANY EXPRESS OR IMPLIED WARRANTIES, INCLUDING, BUT NOT LIMITED TO, THE IMPLIED WARRANTIES OF MERCHANTABILITY AND FITNESS FOR A PARTICULAR PURPOSE ARE DISCLAIMED. IN NO EVENT SHALL THE COPYRIGHT HOLDER OR CONTRIBUTORS BE LIABLE FOR ANY DIRECT, INDIRECT, INCIDENTAL, SPECIAL, EXEMPLARY, OR CONSEQUENTIAL DAMAGES (INCLUDING, BUT NOT LIMITED TO, PROCUREMENT OF SUBSTITUTE GOODS OR SERVICES; LOSS OF USE, DATA, OR PROFITS; OR BUSINESS INTERRUPTION) HOWEVER CAUSED AND ON ANY THEORY OF LIABILITY, WHETHER IN CONTRACT, STRICT LIABILITY, OR TORT (INCLUDING NEGLIGENCE OR OTHERWISE) ARISING IN ANY WAY OUT OF THE USE OF THIS SOFTWARE, EVEN IF ADVISED OF THE POSSIBILITY OF SUCH DAMAGE.

Copyright (c) 2006, CRYPTOGRAMS by <appro@openssl.org> All rights reserved.

Redistribution and use in source and binary forms, with or without modification, are permitted provided that the following conditions are met:

- * Redistributions of source code must retain copyright notices, this list of conditions and the following disclaimer.

- * Redistributions in binary form must reproduce the above copyright notice, this list of conditions and the following disclaimer in the documentation and/or other materials provided with the distribution.

- * Neither the name of the CRYPTOGRAMS nor the names of its copyright holder and contributors may be used to endorse or promote products derived from this software without specific prior written permission.

ALTERNATIVELY, provided that this notice is retained in full, this product may be distributed under the terms of the GNU General Public License (GPL), in which case the provisions of the GPL apply INSTEAD OF those given above.

THIS SOFTWARE IS PROVIDED BY THE COPYRIGHT HOLDER AND CONTRIBUTORS "AS IS" AND ANY EXPRESS OR IMPLIED WARRANTIES, INCLUDING, BUT NOT LIMITED TO, THE IMPLIED WARRANTIES OF MERCHANTABILITY AND FITNESS FOR A PARTICULAR PURPOSE ARE DISCLAIMED. IN NO EVENT SHALL THE COPYRIGHT OWNER OR CONTRIBUTORS BE LIABLE FOR ANY DIRECT, INDIRECT, INCIDENTAL, SPECIAL, EXEMPLARY, OR CONSEQUENTIAL DAMAGES (INCLUDING, BUT NOT LIMITED TO, PROCUREMENT OF SUBSTITUTE GOODS OR SERVICES; LOSS OF USE, DATA, OR PROFITS; OR BUSINESS INTERRUPTION) HOWEVER CAUSED AND ON ANY THEORY OF LIABILITY, WHETHER IN CONTRACT, STRICT LIABILITY, OR TORT (INCLUDING NEGLIGENCE OR OTHERWISE) ARISING IN ANY WAY OUT OF THE USE OF THIS SOFTWARE, EVEN IF ADVISED OF THE POSSIBILITY OF SUCH DAMAGE.

ISC License

Copyright (c) 2013-2017

Frank Denis <j at pureftpd dot org>

Permission to use, copy, modify, and/or distribute this software for any purpose with or without fee is hereby granted, provided that the above copyright notice and this permission notice appear in all copies.

THE SOFTWARE IS PROVIDED "AS IS" AND THE AUTHOR DISCLAIMS ALL WARRANTIES WITH REGARD TO THIS SOFTWARE INCLUDING ALL IMPLIED WARRANTIES OF MERCHANTABILITY AND FITNESS. IN NO EVENT SHALL THE AUTHOR BE LIABLE FOR ANY SPECIAL, DIRECT, INDIRECT, OR CONSEQUENTIAL DAMAGES OR ANY DAMAGES WHATSOEVER RESULTING FROM LOSS OF USE, DATA OR PROFITS, WHETHER IN AN ACTION OF CONTRACT, NEGLIGENCE OR OTHER TORTIOUS ACTION, ARISING OUT OF OR IN CONNECTION WITH THE USE OR PERFORMANCE OF THIS SOFTWARE.

Copyright (c) 2008 The NetBSD Foundation, Inc.

All rights reserved.

This code is derived from software contributed to The NetBSD Foundation by Lennart Augustsson (lennart@augustsson.net) at Carlstedt Research & Technology.

Redistribution and use in source and binary forms, with or without modification, are permitted provided that the following conditions are met:

1. Redistributions of source code must retain the above copyright notice, this list of conditions and the following disclaimer.
2. Redistributions in binary form must reproduce the above copyright notice, this list of conditions and the following disclaimer in the documentation and/or other materials provided with the distribution.

THIS SOFTWARE IS PROVIDED BY THE NETBSD FOUNDATION, INC. AND CONTRIBUTORS "AS IS" AND ANY EXPRESS OR IMPLIED WARRANTIES, INCLUDING, BUT NOT LIMITED TO, THE IMPLIED WARRANTIES OF MERCHANTABILITY AND FITNESS FOR A PARTICULAR PURPOSE ARE DISCLAIMED. IN NO EVENT SHALL THE FOUNDATION OR CONTRIBUTORS BE LIABLE FOR ANY DIRECT, INDIRECT, INCIDENTAL, SPECIAL, EXEMPLARY, OR CONSEQUENTIAL DAMAGES (INCLUDING, BUT NOT LIMITED TO, PROCUREMENT OF SUBSTITUTE GOODS OR SERVICES; LOSS OF USE, DATA, OR PROFITS; OR BUSINESS INTERRUPTION) HOWEVER CAUSED AND ON ANY THEORY OF LIABILITY, WHETHER IN CONTRACT, STRICT LIABILITY, OR TORT (INCLUDING NEGLIGENCE OR OTHERWISE) ARISING IN ANY WAY OUT OF THE USE OF THIS SOFTWARE, EVEN IF ADVISED OF THE POSSIBILITY OF SUCH DAMAGE.

Copyright (c) 2000 Intel Corporation

All rights reserved.

Redistribution and use in source and binary forms, with or without modification, are permitted provided that the following conditions are met:

* Redistributions of source code must retain the above copyright notice, this list of conditions and the following disclaimer.

* Redistributions in binary form must reproduce the above copyright notice, this list of conditions and the following disclaimer in the documentation and/or other materials provided with the distribution.

* Neither name of Intel Corporation nor the names of its contributors may be used to endorse or promote products derived from this software without specific prior written permission.

THIS SOFTWARE IS PROVIDED BY THE COPYRIGHT HOLDERS AND CONTRIBUTORS "AS IS" AND ANY EXPRESS OR IMPLIED WARRANTIES, INCLUDING, BUT NOT LIMITED TO, THE IMPLIED WARRANTIES OF MERCHANTABILITY AND FITNESS FOR A PARTICULAR PURPOSE ARE DISCLAIMED. IN NO EVENT SHALL INTEL OR CONTRIBUTORS BE LIABLE FOR ANY DIRECT, INDIRECT, INCIDENTAL, SPECIAL, EXEMPLARY, OR CONSEQUENTIAL DAMAGES (INCLUDING, BUT NOT LIMITED TO, PROCUREMENT OF SUBSTITUTE GOODS OR SERVICES; LOSS OF USE, DATA, OR PROFITS; OR BUSINESS INTERRUPTION) HOWEVER CAUSED AND ON ANY THEORY OF LIABILITY, WHETHER IN CONTRACT, STRICT LIABILITY, OR TORT (INCLUDING NEGLIGENCE OR OTHERWISE) ARISING IN ANY WAY OUT OF THE USE OF THIS SOFTWARE, EVEN IF ADVISED OF THE POSSIBILITY OF SUCH DAMAGE.

Lua

Copyright © 1994–2014 Lua.org, PUC-Rio.

Permission is hereby granted, free of charge, to any person obtaining a copy of this software and associated documentation files (the "Software"), to deal in the Software without restriction, including without limitation the rights to use, copy, modify, merge, publish, distribute, sublicense, and/or sell copies of the Software, and to permit persons to whom the Software is furnished to do so, subject to the following conditions:

The above copyright notice and this permission notice shall be included in all copies or substantial portions of the Software.

THE SOFTWARE IS PROVIDED "AS IS", WITHOUT WARRANTY OF ANY KIND, EXPRESS OR IMPLIED, INCLUDING BUT NOT LIMITED TO THE WARRANTIES OF MERCHANTABILITY, FITNESS FOR A PARTICULAR PURPOSE AND NONINFRINGEMENT. IN NO EVENT SHALL THE AUTHORS OR COPYRIGHT HOLDERS BE LIABLE FOR ANY CLAIM, DAMAGES OR OTHER LIABILITY, WHETHER IN AN ACTION OF CONTRACT, TORT OR OTHERWISE, ARISING FROM, OUT OF OR IN CONNECTION WITH THE SOFTWARE OR THE USE OR OTHER DEALINGS IN THE SOFTWARE.

LuaSocket

LuaSocket 2.0.2 license

Copyright © 2004-2007 Diego Nehab

Permission is hereby granted, free of charge, to any person obtaining a copy of this software and associated documentation files (the "Software"), to deal in the Software without restriction, including without limitation the rights to use, copy, modify, merge, publish, distribute, sublicense, and/or sell copies of the Software, and to permit persons to whom the Software is furnished to do so, subject to the following conditions:

The above copyright notice and this permission notice shall be included in all copies or substantial portions of the Software.

THE SOFTWARE IS PROVIDED "AS IS", WITHOUT WARRANTY OF ANY KIND, EXPRESS OR IMPLIED, INCLUDING BUT NOT LIMITED TO THE WARRANTIES OF MERCHANTABILITY, FITNESS FOR A PARTICULAR PURPOSE AND NONINFRINGEMENT. IN NO EVENT SHALL THE AUTHORS OR COPYRIGHT HOLDERS BE LIABLE FOR ANY CLAIM, DAMAGES OR OTHER LIABILITY, WHETHER IN AN ACTION OF CONTRACT, TORT OR OTHERWISE, ARISING FROM, OUT OF OR IN CONNECTION WITH THE SOFTWARE OR THE USE OR OTHER DEALINGS IN THE SOFTWARE.

LuneScript

Copyright (c) 2018 ifritJP

Permission is hereby granted, free of charge, to any person obtaining a copy of this software and associated documentation files (the "Software"), to deal in the Software without restriction, including without limitation the rights to use, copy, modify, merge, publish, distribute, sublicense, and/or sell copies of the Software, and to permit persons to whom the Software is furnished to do so, subject to the following conditions:

The above copyright notice and this permission notice shall be included in all copies or substantial portions of the Software.

THE SOFTWARE IS PROVIDED "AS IS", WITHOUT WARRANTY OF ANY KIND, EXPRESS OR IMPLIED, INCLUDING BUT NOT LIMITED TO THE WARRANTIES OF MERCHANTABILITY, FITNESS FOR A PARTICULAR PURPOSE AND NONINFRINGEMENT. IN NO EVENT SHALL THE AUTHORS OR COPYRIGHT HOLDERS BE LIABLE FOR ANY CLAIM, DAMAGES OR OTHER LIABILITY, WHETHER IN AN ACTION OF CONTRACT, TORT OR OTHERWISE, ARISING FROM, OUT OF OR IN CONNECTION WITH THE SOFTWARE OR THE USE OR OTHER DEALINGS IN THE SOFTWARE.

Copyright (c) 2002-2019, Jouni Malinen <j@w1.fi> and contributors
All Rights Reserved.

This software may be distributed, used, and modified under the terms of BSD license:

Redistribution and use in source and binary forms, with or without modification, are permitted provided that the following conditions are met:

1. Redistributions of source code must retain the above copyright notice, this list of conditions and the following disclaimer.
2. Redistributions in binary form must reproduce the above copyright notice, this list of conditions and the following disclaimer in the documentation and/or other materials provided with the distribution.
3. Neither the name(s) of the above-listed copyright holder(s) nor the names of its contributors may be used to endorse or promote products derived from this software without specific prior written permission.

THIS SOFTWARE IS PROVIDED BY THE COPYRIGHT HOLDERS AND CONTRIBUTORS "AS IS" AND ANY EXPRESS OR IMPLIED WARRANTIES, INCLUDING, BUT NOT LIMITED TO, THE IMPLIED WARRANTIES OF MERCHANTABILITY AND FITNESS FOR A PARTICULAR PURPOSE ARE DISCLAIMED. IN NO EVENT SHALL THE COPYRIGHT OWNER OR CONTRIBUTORS BE LIABLE FOR ANY DIRECT, INDIRECT, INCIDENTAL, SPECIAL, EXEMPLARY, OR CONSEQUENTIAL DAMAGES (INCLUDING, BUT NOT LIMITED TO, PROCUREMENT OF SUBSTITUTE GOODS OR SERVICES; LOSS OF USE, DATA, OR PROFITS; OR BUSINESS INTERRUPTION) HOWEVER CAUSED AND ON ANY THEORY OF LIABILITY, WHETHER IN CONTRACT, STRICT LIABILITY, OR TORT (INCLUDING NEGLIGENCE OR OTHERWISE) ARISING IN ANY WAY OUT OF THE USE OF THIS SOFTWARE, EVEN IF ADVISED OF THE POSSIBILITY OF SUCH DAMAGE.

Copyright (C) 2019, Broadcom Corporation. All Rights Reserved.

Permission to use, copy, modify, and/or distribute this software for any purpose with or without fee is hereby granted, provided that the above copyright notice and this permission notice appear in all copies.

THE SOFTWARE IS PROVIDED "AS IS" AND THE AUTHOR DISCLAIMS ALL WARRANTIES WITH REGARD TO THIS SOFTWARE INCLUDING ALL IMPLIED WARRANTIES OF MERCHANTABILITY AND FITNESS. IN NO EVENT SHALL THE AUTHOR BE LIABLE FOR ANY SPECIAL, DIRECT, INDIRECT, OR CONSEQUENTIAL DAMAGES OR ANY DAMAGES WHATSOEVER RESULTING FROM LOSS OF USE, DATA OR PROFITS, WHETHER IN AN ACTION OF CONTRACT, NEGLIGENCE OR OTHER TORTIOUS ACTION, ARISING OUT OF OR IN CONNECTION WITH THE USE OR PERFORMANCE OF THIS SOFTWARE.

The following applies only to products supporting Wi-Fi.

(c) 2009-2013 by Jeff Mott. All rights reserved.

Redistribution and use in source and binary forms, with or without modification, are permitted provided that the following conditions are met:

- * Redistributions of source code must retain the above copyright notice, this list of conditions, and the following disclaimer.
- * Redistributions in binary form must reproduce the above copyright notice, this list of conditions, and the following disclaimer in the documentation or other materials provided with the distribution.

* Neither the name CryptoJS nor the names of its contributors may be used to endorse or promote products derived from this software without specific prior written permission.

THIS SOFTWARE IS PROVIDED BY THE COPYRIGHT HOLDERS AND CONTRIBUTORS "AS IS," AND ANY EXPRESS OR IMPLIED WARRANTIES, INCLUDING, BUT NOT LIMITED TO, THE IMPLIED WARRANTIES OF MERCHANTABILITY AND FITNESS FOR A PARTICULAR PURPOSE, ARE DISCLAIMED. IN NO EVENT SHALL THE COPYRIGHT HOLDER OR CONTRIBUTORS BE LIABLE FOR ANY DIRECT, INDIRECT, INCIDENTAL, SPECIAL, EXEMPLARY, OR CONSEQUENTIAL DAMAGES (INCLUDING, BUT NOT LIMITED TO, PROCUREMENT OF SUBSTITUTE GOODS OR SERVICES; LOSS OF USE, DATA, OR PROFITS; OR BUSINESS INTERRUPTION) HOWEVER CAUSED AND ON ANY THEORY OF LIABILITY, WHETHER IN CONTRACT, STRICT LIABILITY, OR TORT (INCLUDING NEGLIGENCE OR OTHERWISE) ARISING IN ANY WAY OUT OF THE USE OF THIS SOFTWARE, EVEN IF ADVISED OF THE POSSIBILITY OF SUCH DAMAGE.

The following applies only to products supporting PIXUS Cloud Link, PIXMA Cloud Link, or MAXIFY Cloud Link.

THE BASIC LIBRARY FUNCTIONS

Written by: Philip Hazel
Email local part: ph10
Email domain: cam.ac.uk
University of Cambridge Computing Service, Cambridge, England.
Copyright (c) 1997-2012 University of Cambridge
All rights reserved.

PCRE JUST-IN-TIME COMPILATION SUPPORT

Written by: Zoltan Herczeg
Email local part: hzmester
Email domain: freemail.hu
Copyright(c) 2010-2012 Zoltan Herczeg
All rights reserved.

STACK-LESS JUST-IN-TIME COMPILER

Written by: Zoltan Herczeg
Email local part: hzmester
Email domain: freemail.hu
Copyright(c) 2009-2012 Zoltan Herczeg
All rights reserved.

THE C++ WRAPPER FUNCTIONS

Contributed by: Google Inc.
Copyright (c) 2007-2012, Google Inc.
All rights reserved.

THE "BSD" LICENCE

-----Redistribution and use in source and binary forms, with or without modification, are permitted provided that the following conditions are met:

* Redistributions of source code must retain the above copyright notice, this list of conditions and the following disclaimer.

* Redistributions in binary form must reproduce the above copyright notice, this list of conditions and the following disclaimer in the documentation and/or other materials provided with the distribution.

* Neither the name of the University of Cambridge nor the name of Google Inc. nor the names of their contributors may be used to endorse or promote products derived from this software without specific prior written permission.

THIS SOFTWARE IS PROVIDED BY THE COPYRIGHT HOLDERS AND CONTRIBUTORS "AS IS" AND ANY EXPRESS OR IMPLIED WARRANTIES, INCLUDING, BUT NOT LIMITED TO, THE IMPLIED WARRANTIES OF MERCHANTABILITY AND FITNESS FOR A PARTICULAR PURPOSE ARE DISCLAIMED. IN NO EVENT SHALL THE COPYRIGHT OWNER OR CONTRIBUTORS BE LIABLE FOR ANY DIRECT, INDIRECT, INCIDENTAL, SPECIAL, EXEMPLARY, OR CONSEQUENTIAL DAMAGES (INCLUDING, BUT NOT LIMITED TO, PROCUREMENT OF SUBSTITUTE GOODS OR SERVICES; LOSS OF USE, DATA, OR PROFITS; OR BUSINESS INTERRUPTION) HOWEVER CAUSED AND ON ANY THEORY OF LIABILITY, WHETHER IN CONTRACT, STRICT LIABILITY, OR TORT (INCLUDING NEGLIGENCE OR OTHERWISE) ARISING IN ANY WAY OUT OF THE USE OF THIS SOFTWARE, EVEN IF ADVISED OF THE POSSIBILITY OF SUCH DAMAGE.

This software is based in part on the work of the Independent JPEG Group.

General Notes (Quick Utility Toolbox)

Quick Utility Toolbox is subject to the following restrictions. Keep these points in mind.

- For products supporting Quick Utility Toolbox, see our website.
- Available functions and settings vary depending on your printer and the country/region setting. Internet connection is required depending on the function to be used. Internet connection fees apply.
- In this guide, descriptions are mainly based on the screens displayed when using macOS High Sierra 10.13.

About Downloading the Corresponding Software

- To use each function, you need to install the corresponding software. Access our website to download and install the software.
Internet connection is required for downloading. Internet connection fees apply.

What You Can Do with Quick Utility Toolbox

Quick Utility Toolbox is a shortcut menu that allows you to easily start the functions you want to use. You can quickly start the utilities supporting Quick Utility Toolbox to set up or manage the printer, or access this guide with one click.

You can also set a network folder as the destination for images scanned from the operation panel of the printer and for received fax data.



Starting Software from Quick Utility Toolbox

In Quick Utility Toolbox, you can start software or open manuals from the Main Screen.

▶▶▶ Note

- The **Management Tool** tab does not appear if supported software is not installed.



1. Click (Quick Utility Toolbox) in the Dock.

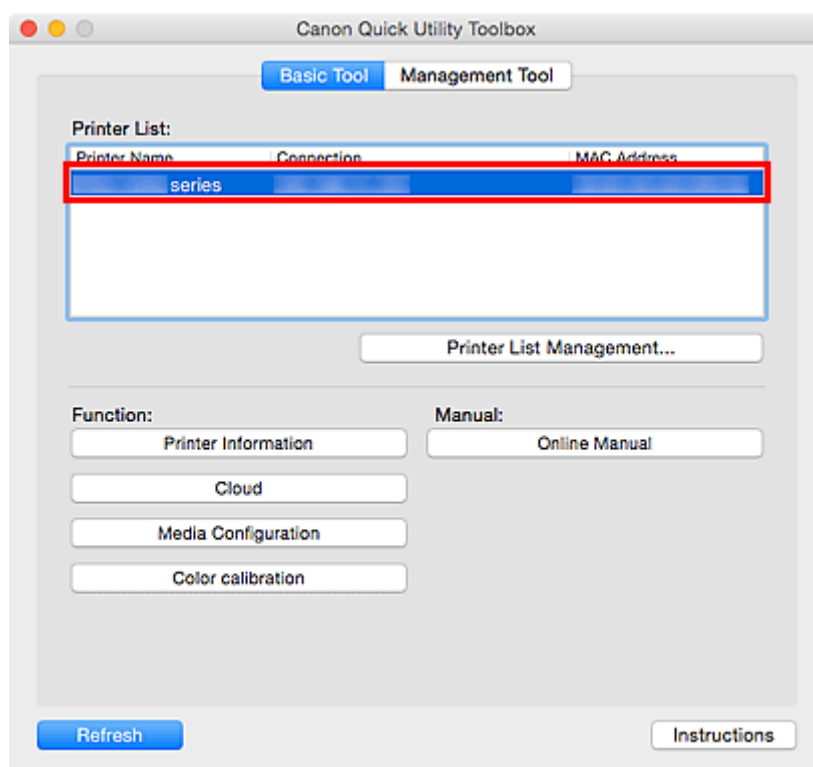
The Main Screen appears.

- ➔ [Main Screen \(MB series / iB series / GX series\)](#)
- ➔ [Main Screen \(PRO series / TX series / TM series / TA series / TZ series / GP series / TC series\)](#)

▶▶▶ Note

- When the icon is not registered to the Dock, from the **Go** menu of Finder, select **Applications**, then click the **Canon Utilities** folder, **Quick Utility Toolbox** folder, and then **Canon Quick Utility Toolbox** icon.

2. Select printer you want to use from **Printer List**.

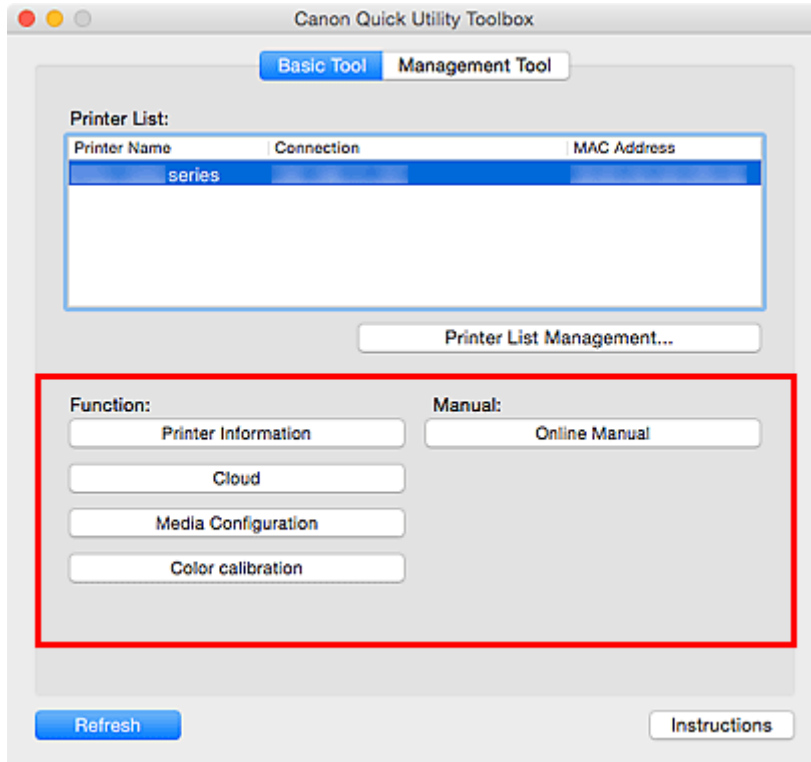


Items corresponding to the selected printer appear in **Function**.

▶▶▶ Note

- If the printer you want to use is not displayed in **Printer List**, click **Printer List Management...** and add the printer in the displayed [Printer Management dialog](#).

3. Click the item you want to use.



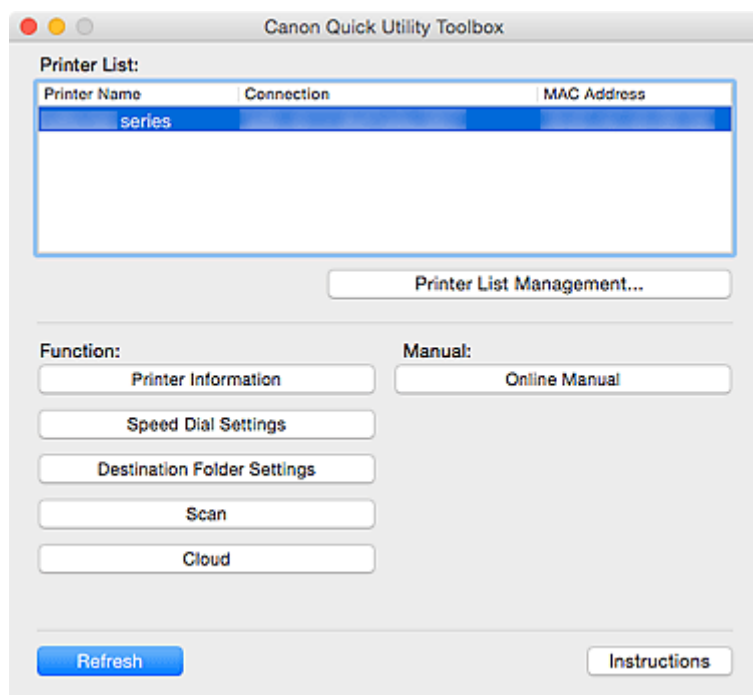
The software starts or manual opens.

▶▶▶ **Note**

- Items displayed in **Function** and the available functions vary depending on the printer selected in **Printer List**.

Main Screen (MB series / iB series / GX series)

You can start software or open manuals.



Printer List

Printers added from **Add Printer...** in the **Printer Management** dialog appear.

»» Important

- Some functions are not available when a printer connected to a single computer is shared in a network environment and used from multiple computers.

Printer List Management...

Click to display the [Printer Management dialog](#) for managing (adding, setting, etc.) the printers that appear in **Printer List**.

Function

Displays the items supported by the printer selected in **Printer List** and available functions.

Printer Information

Starts a Web browser in which you can check the printer information or use the utility functions.

»» Important

- To use this function, the printer and computer must be connected over a network.
- This function is not available if the printer is registered with the IPv6 address. Register the printer with the Bonjour name or IPv4 address.

»» Note

- When an authentication screen appears, you need to enter the user name and password. For details, see Administrator Password.

Speed Dial Settings

Starts the Speed Dial Utility with which you can edit the fax/telephone numbers registered to the printer.

Destination Folder Settings

Starts Folder Setting Utility with which you can set a network folder as the destination for images scanned from the operation panel of the printer and for received fax data.

►► Important

- To use this function, the printer and computer must be connected over a network.

►► Note

- If a password entry screen appears, enter the administrator password set to the printer, and then click **OK**. If you are not sure, contact the administrator. For the password, see Administrator Password.

Scan

Starts the application with which you can scan photos, documents, etc.

Cloud

Starts a Web browser and displays Canon Inkjet Cloud Printing Center. Using the printer's cloud function, you can register/manage applications or check the printer's print status, errors, ink status, etc. from smartphones and tablets.

►► Note

- Items displayed in **Function** and the available functions vary depending on the printer selected in **Printer List**.
- For details on the corresponding software, see the Online Manual displayed by clicking **Online Manual**.

Manual

Online Manual

Opens the manual of the printer selected in **Printer List**.

Refresh

Click this to refresh the displayed contents.

Instructions

Opens this guide.

Related Topic

- ➔ [Starting Software from Quick Utility Toolbox](#)

Main Screen (PRO series / TX series / TM series / TA series / TZ series / GP series / TC series)

You can start software or open manuals.

➔ [Basic Tool Tab](#)

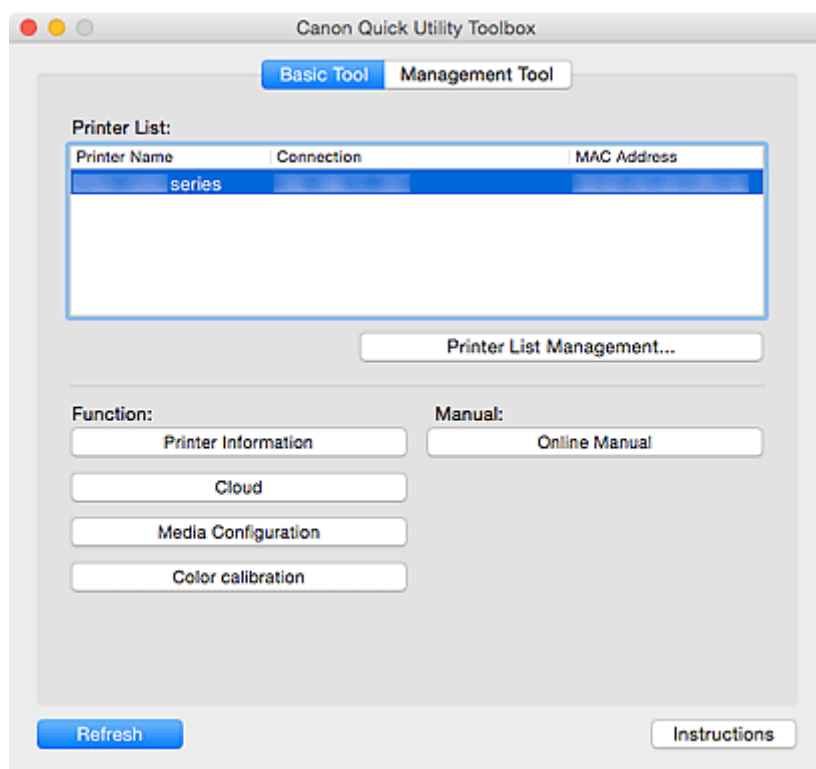
➔ [Management Tool Tab](#)

▶▶▶ Note

- If supported software is not installed, the **Management Tool** tab does not appear and the contents of the **Basic Tool** tab appear in the Main Screen.

Basic Tool Tab

Start software or open manuals for the selected printer.



Printer List

Printers added from **Add Printer...** in the **Printer Management** dialog appear.

▶▶▶ Important

- Some functions are not available when a printer connected to a single computer is shared in a network environment and used from multiple computers.

Printer List Management...

Click to display the [Printer Management dialog](#) for managing (adding, setting, etc.) the printers that appear in **Printer List**.

Function

Displays the items supported by the printer selected in **Printer List** and available functions.

Printer Information

Starts a Web browser in which you can check the printer information or use the utility functions.

▶▶▶ Important

- To use this function, the printer and computer must be connected over a network.
- This function is not available if the printer is registered with the IPv6 address. Register the printer with the Bonjour name or IPv4 address.

▶▶▶ Note

- When an authentication screen appears, you need to enter the user name and password. For details, see Administrator Password.

Cloud

Starts a Web browser and displays Canon Inkjet Cloud Printing Center. Using the printer's cloud function, you can register/manage applications or check the printer's print status, errors, ink status, etc. from smartphones and tablets.

Media Configuration

Starts Media Configuration Tool for adding or editing the paper information on the printer.

To use this function, you need to install Media Configuration Tool. Download Media Configuration Tool from our website.

Color calibration

Starts Calibration Tool for making adjustments so that the selected printer's print results will be in the correct color tones.

For more details, click Home to return to the top page of the Online Manual for your model and search for "Performing Color Calibration," and then see Step 4 onwards.

Destination Folder Settings

Starts Folder Setting Utility with which you can set a network folder as the destination for images scanned from the operation panel of the printer and for received fax data.

▶▶▶ Important

- To use this function, the printer and computer must be connected over a network.

▶▶▶ Note

- If a password entry screen appears, enter the administrator password set to the printer, and then click **OK**. If you are not sure, contact the administrator. For the password, see Administrator Password.

Scan

Starts the application with which you can scan photos, documents, etc.

▶▶▶ Note

- Items displayed in **Function** and the available functions vary depending on the printer selected in **Printer List**.
- For details on the corresponding software, see the Online Manual displayed by clicking **Online Manual**.

Manual

Online Manual

Opens the manual of the printer selected in **Printer List**.

Refresh

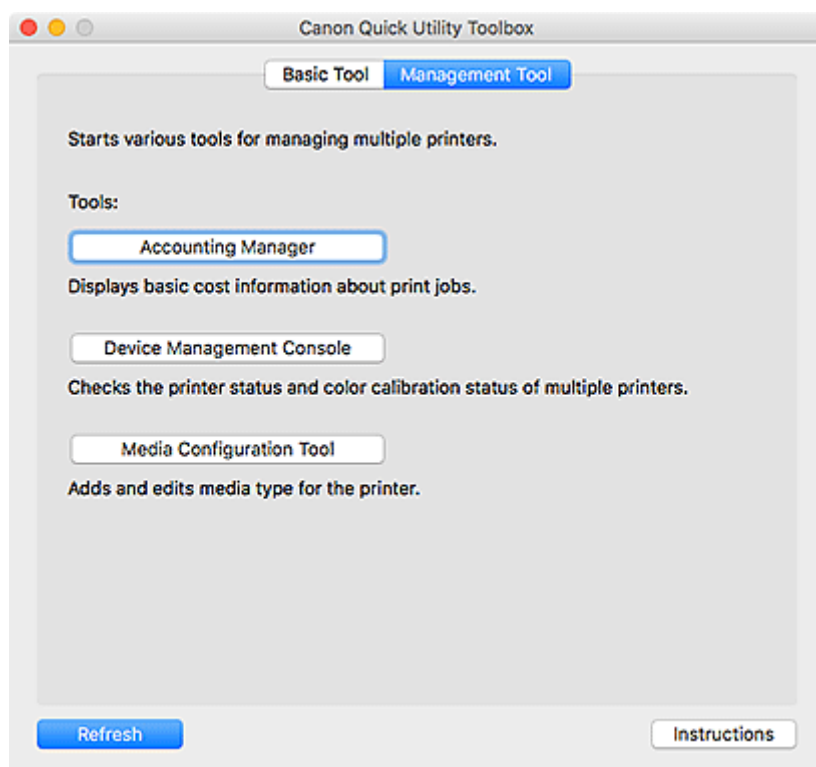
Click this to refresh the displayed contents.

Instructions

Opens this guide.

Management Tool Tab

Start various software programs for managing multiple printers or open their manuals.



Tools

Accounting Manager

Starts Accounting Manager for calculating the printer's printing costs by department or user.

Device Management Console

Starts Device Management Console for checking multiple printer conditions or the calibration status.

Media Configuration Tool

Starts Media Configuration Tool for adding or editing the paper information on the printer.

▶▶▶ Note

- To use these applications, you need to install them additionally.
- For details on each application, see the Online Manual.

Refresh

Click this when the software you want to use is not displayed in **Tools**.

Instructions

Opens this guide.

Related Topic

➔ [Starting Software from Quick Utility Toolbox](#)

Printer Management Dialog

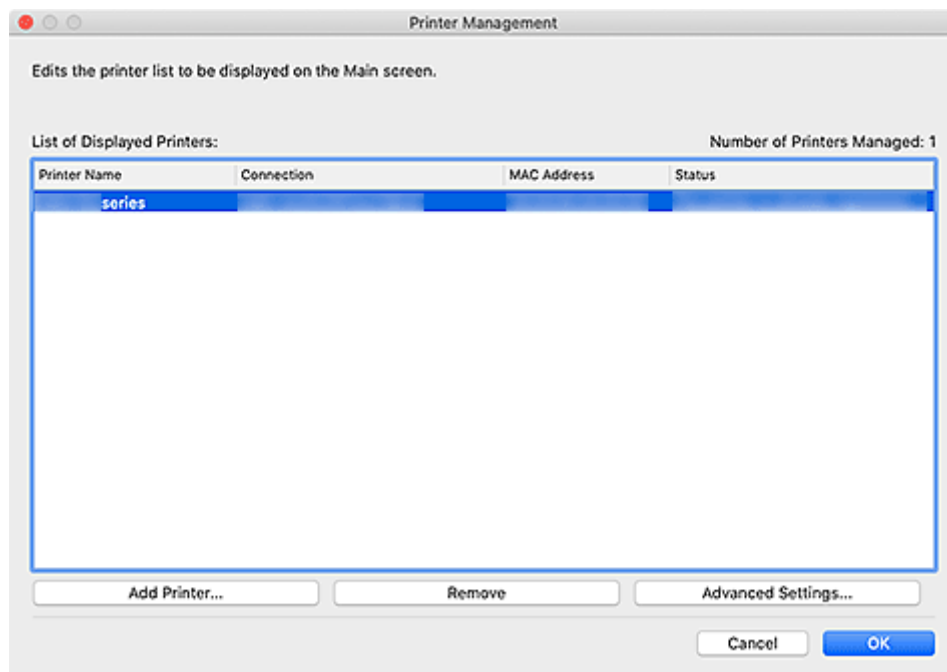
Add printers that appear in **Printer List** in the Main Screen or set the display names of the printers.

To display the **Printer Management** dialog, click **Printer List Management...** in the Main Screen.

➔ [Printer Management Dialog](#)

➔ [Add Printer Dialog](#)

Printer Management Dialog



List of Displayed Printers

Displays a list of registered printers.

➤➤➤ Note

- For messages displayed in **Status** and what to do with them, see [Troubleshooting](#).
- If you are using a model supporting wired LAN, the MAC address of the wired LAN appears in **MAC Address** even when it is connected via Wi-Fi.

Add Printer...

Click to display the [Add Printer dialog](#). Search for printers and select the printer(s) you want to register.

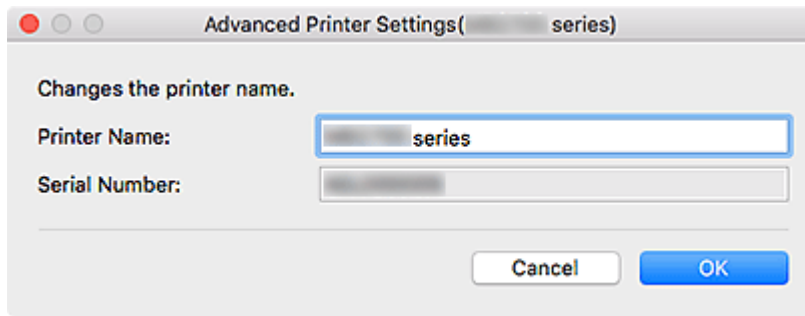
Remove

Cancels the registration of the printer specified in **List of Displayed Printers**.

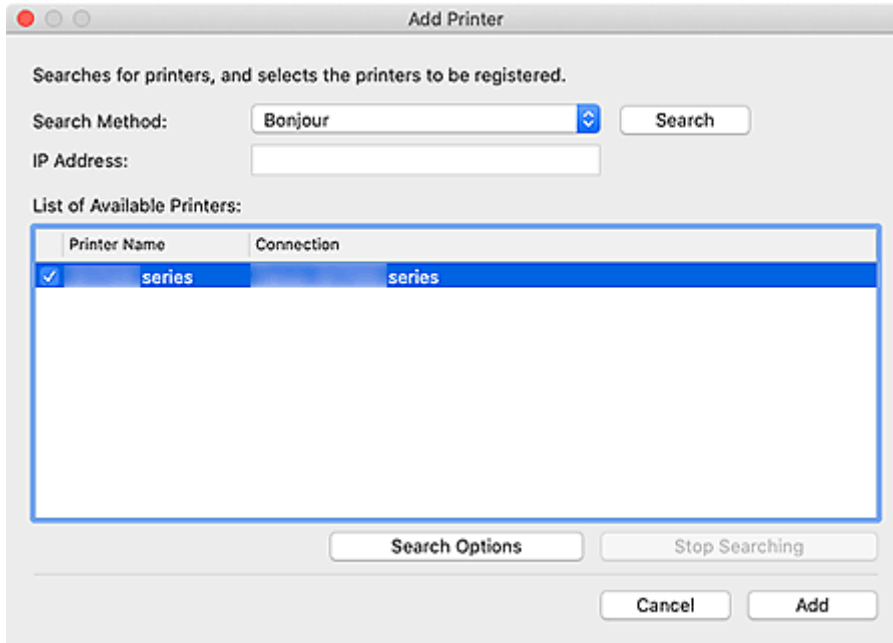
Advanced Settings...

Click to display the **Advanced Printer Settings** dialog for changing the printer's display name or checking the printer's serial number.

To change the printer's display name, enter the desired name in **Printer Name**, and then click **OK**.



Add Printer Dialog



Search Method

Select a printer search method.

Select **Bonjour**, **Auto (IPv4/IPv6)**, **IPv4**, **IPv6**, or **USB**.

IP Address

If **IPv4** or **IPv6** is selected for **Search Method**, enter the printer's IP address.

Search

Click to search for printers.

List of Available Printers

Displays a list of found printers.

Select the checkbox(es) to select the printer(s).

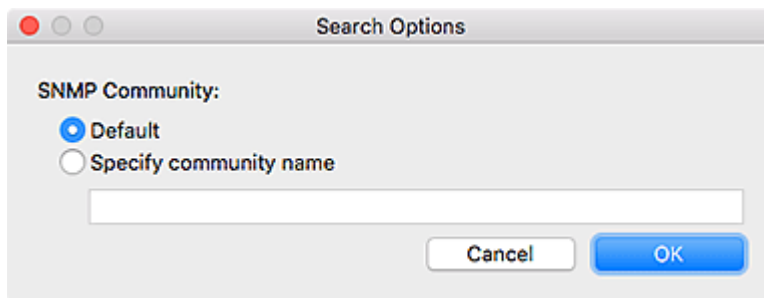
»»» Note

- If you select **Auto (IPv4/IPv6)** and search, each of a printer's IP addresses (IPv4 and IPv6) may appear as a different printer in the search result. Select either one and add.
- If printers connected over a network do not appear, make sure the computer being used for search and the printer are on the same subnet. If not on the same subnet, check the printer's IP address, and then specify **IPv4** or **IPv6** and search.

- If you are using an MB, iB, or GX series printer and you search by specifying **Auto (IPv4/IPv6)**, **IPv4**, or **IPv6**, the printer may not appear in the search result. Search by specifying **Bonjour**.

Search Options

Click to display the **Search Options** dialog for specifying the community name.



▶▶▶ Note

- This function is available when **Auto (IPv4/IPv6)**, **IPv4**, or **IPv6** is selected for **Search Method**.

Stop Searching

Stops the printer search.

Add

Click to add the printer(s) selected in **List of Available Printers**.

Dock Icon



Use  (Quick Utility Toolbox) in the Dock to fully utilize Quick Utility Toolbox.

Click to display the Main Screen.

Control-click to display a menu for the following settings.

Display Guide Message

Shows or hides guide messages.

When a guide message appears, select the **Do not show this message again** checkbox to hide the guide message thereafter.

Destination Folder Settings

- **Setting the Destination**
- **Folder Setting Utility Window**
 - **Add Destination Folder/Edit Destination Folder Dialog**

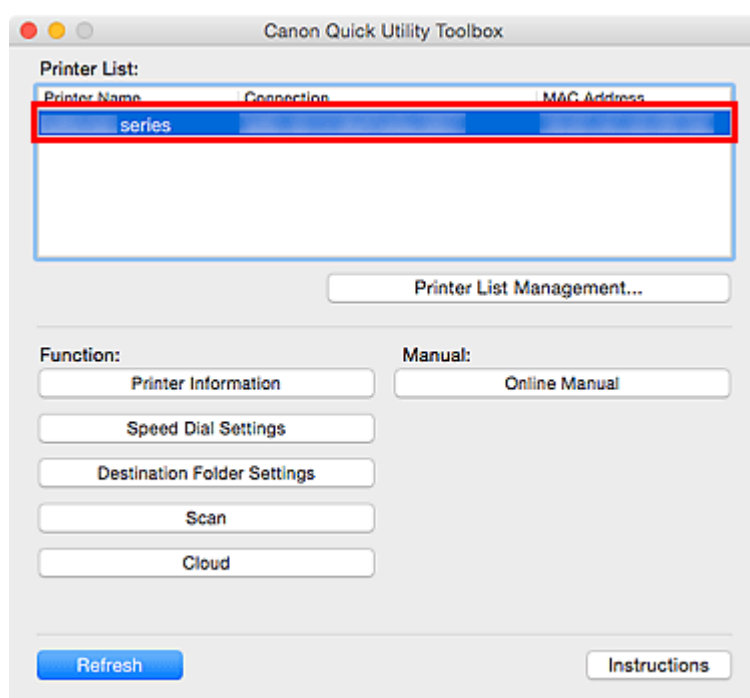
Setting the Destination

You can set a network folder as the destination for images scanned from the operation panel of the printer and for received fax data.

- ➔ [Adding Destination Folders](#)
- ➔ [Setting the Auto Save Location for Fax Data](#)

Adding Destination Folders

1. Open the Main Screen.
2. Select printer you want to use from **Printer List**.

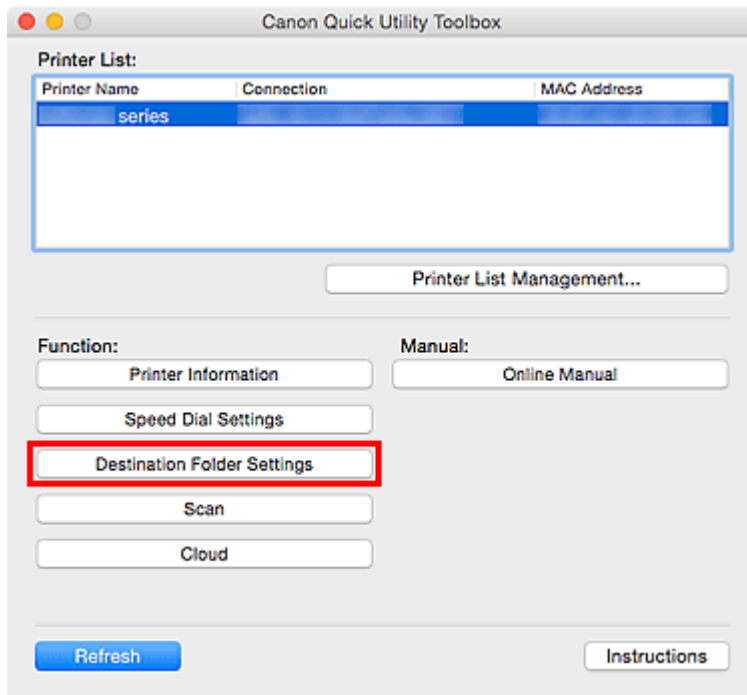


Items corresponding to the selected printer appear in **Function**.

➤➤➤ Note

- If your printer is not displayed in **Printer List**, click **Printer List Management...** and add the printer in the displayed [Printer Management dialog](#).

3. Click **Destination Folder Settings** from the items displayed in **Function**.

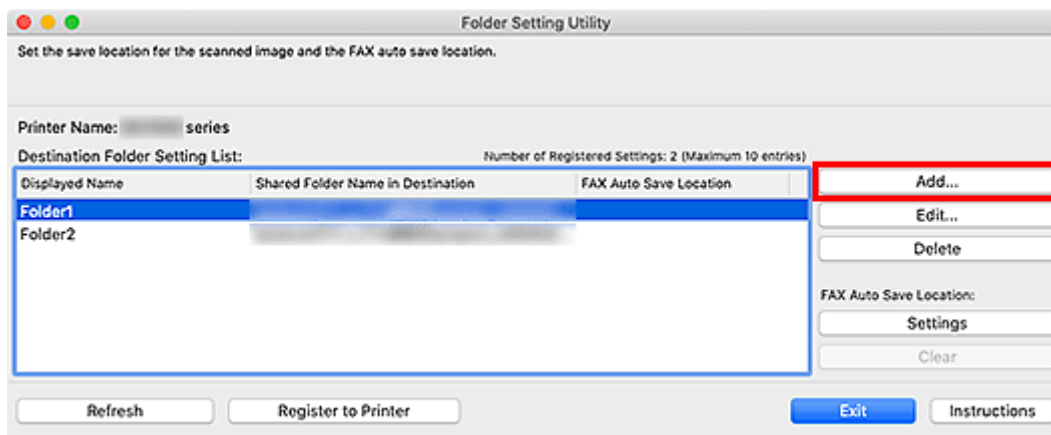


The [Folder Setting Utility window](#) appears.

➤➤➤ Note

- A password entry screen may appear before the [Folder Setting Utility window](#) appears. If it appears, enter the administrator password set to the printer, and then click **OK**. If you are not sure, contact the administrator. For the password, see Administrator Password.

4. Click **Add...**



The **Add Destination Folder** dialog appears.

5. Enter **Displayed Name**, **Shared Folder Name in Destination**, and other information.

»»» Important

- **Displayed Name** and **Shared Folder Name in Destination** are required entry fields.

»»» Note

- For notes on entering each field, see [Add Destination Folder/Edit Destination Folder Dialog](#).

6. Click **Connection Test**.

Check if you can connect to the specified folder.

»»» Important

- Make sure of the following before performing **Connection Test**.
 - The printer is turned on
 - The printer and computer are connected to the network
 - Another software or user is not using the printer
 - An error is not displayed on the operation panel of the printer

7. Check the message, then click **OK**.

8. Click **OK** in the **Add Destination Folder** dialog.

9. Click **Register to Printer**.

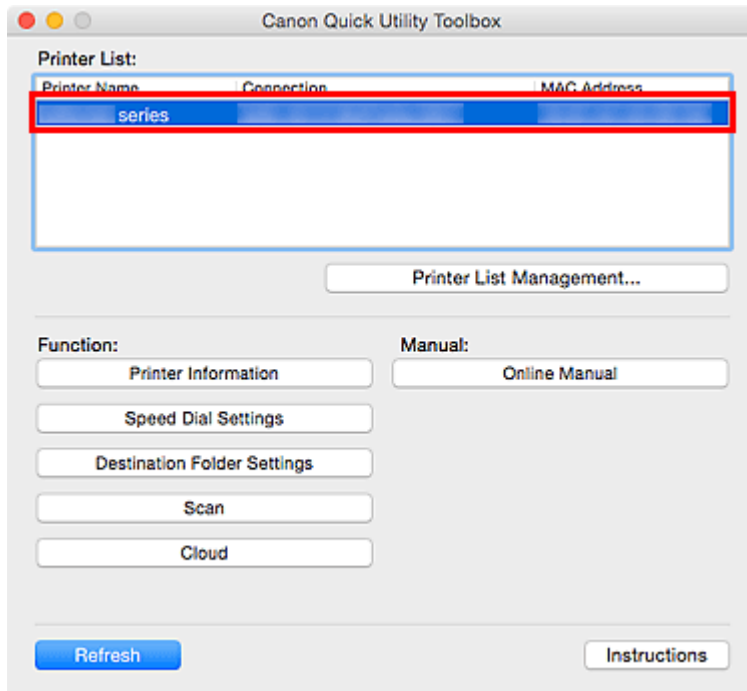
10. Check the message, then click **OK**.

Setting the Auto Save Location for Fax Data

Set one of the folders displayed in **Destination Folder Setting List** as the auto save location for fax data.

1. Open the Main Screen.

2. Select printer you want to use from **Printer List**.

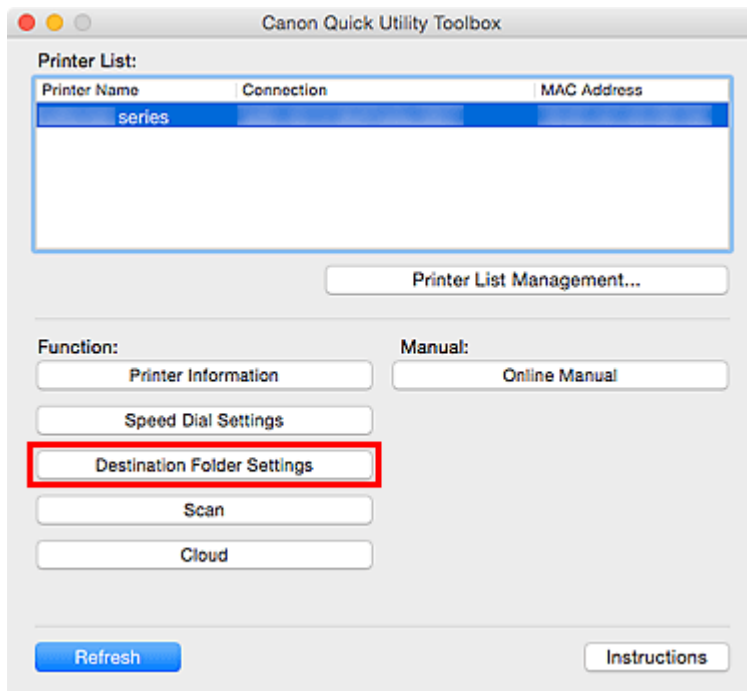


Items corresponding to the selected printer appear in **Function**.

►►► **Note**

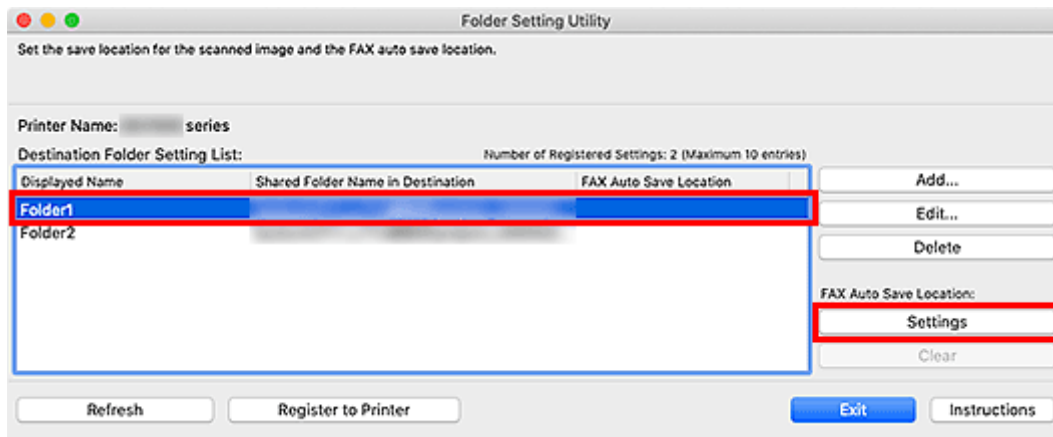
- If your printer is not displayed in **Printer List**, click **Printer List Management...** and add the printer in the displayed [Printer Management dialog](#).

3. Click **Destination Folder Settings** from the items displayed in **Function**.



The [Folder Setting Utility window](#) appears.

4. Select one of the folders you want to use as the save location from **Destination Folder Setting List**, then click **Settings**.



▶▶▶ Note

- When no folder is displayed in **Destination Folder Setting List**, add a destination folder.
 - ➔ [Adding Destination Folders](#)
- If a PIN code entry screen appears, enter the code.

5. Check the message, then click **OK**.

✔ (Checkmark) appears in **FAX Auto Save Location** of the set folder.

6. Click **Register to Printer**.

7. Check the message, then click **OK**.

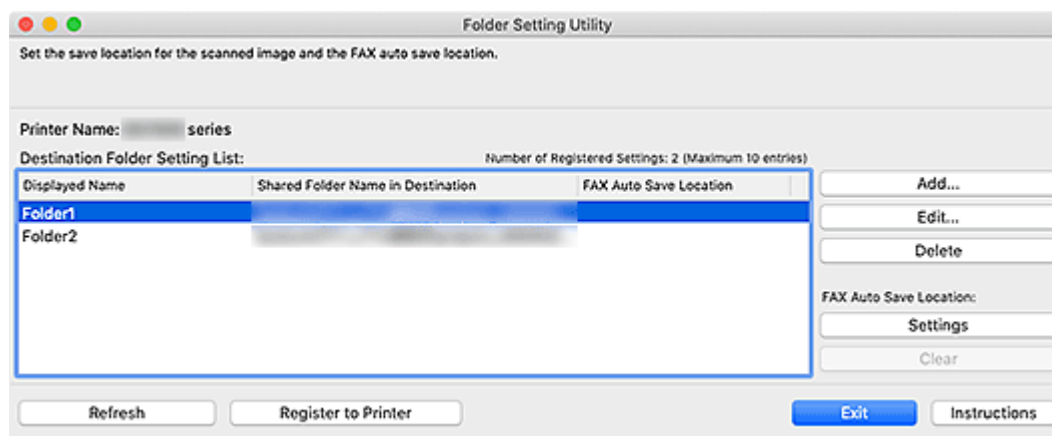
Folder Setting Utility Window

You can set a network folder as the destination for images scanned from the operation panel of the printer and for received fax data.

To display the **Folder Setting Utility** window, click **Destination Folder Settings** in the Main Screen.

►►► Note

- The displayed items and available functions vary depending on the printer selected in **Printer List**.



Printer Name

Displays the printer name selected in the [Main Screen](#).

Destination Folder Setting List

Displays the list of destination folders for data.

Add...

Click to display the [Add Destination Folder dialog](#) in which you can add destination folders.

Edit...

Click to display the [Edit Destination Folder dialog](#) for editing the **Displayed Name**, **Shared Folder Name in Destination**, and other information of the folder specified in **Destination Folder Setting List**.

►►► Note

- When editing a folder to which PIN code is set, a PIN code entry screen appears.

Delete

Deletes the folder specified in **Destination Folder Setting List**.

FAX Auto Save Location

Settings

Sets the folder specified in **Destination Folder Setting List** as the auto save location for fax data.

►►► Note

- When setting a folder to which PIN code is set, a PIN code entry screen appears.

Clear

Removes the folder specified in **Destination Folder Setting List** from the auto save location for fax data.

Refresh

Reads the destination folder setting information from the printer again.

▶▶▶ Important

- Make sure of the following before clicking **Refresh**.
 - The printer is turned on
 - The printer and computer are connected to the network
 - Another software or user is not using the printer
 - An error is not displayed on the operation panel of the printer

Register to Printer

Registers the settings to the printer.

▶▶▶ Important

- Make sure of the following before clicking **Register to Printer**.
 - The printer is turned on
 - The printer and computer are connected to the network
 - Another software or user is not using the printer
 - An error is not displayed on the operation panel of the printer

Exit

Closes the **Folder Setting Utility** window.

Instructions

Opens this guide.

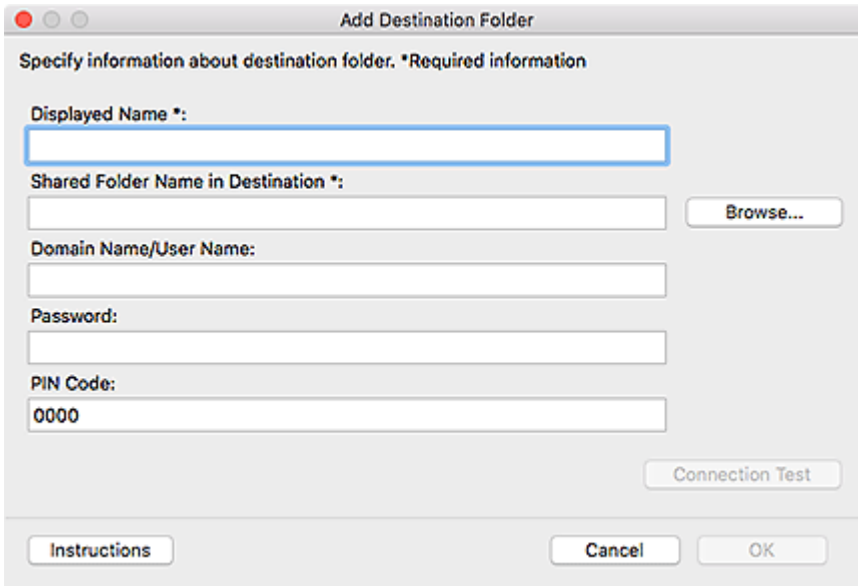
Related Topic

➔ [Setting the Destination](#)

Add Destination Folder/Edit Destination Folder Dialog

Add or edit folders in which to save images scanned from the printer's operation panel and received fax data.

To display the **Add Destination Folder** or **Edit Destination Folder** dialog, click **Add...** or **Edit...** in the **Folder Setting Utility** window.



Displayed Name

Enter the name you want to display on the printer's operation panel.

►►► Important

- **Displayed Name** is a required entry field.
- Use only the characters that can be entered on the operation panel of your printer.

Shared Folder Name in Destination

Specify the destination folder for data. Click **Browse...**, and then select a folder.

►►► Important

- **Shared Folder Name in Destination** is a required entry field.
- Enter a folder such as a shared network folder in the form of "\\server name\folder name". Separate the server name and folder names with backslashes.

Domain Name/User Name

Enter the domain name and user name with which to access the destination folder for data.

►►► Note

- If a domain name is required, enter it in the form of "domain name\user name". Separate the domain name and user name with a backslash.
- If you don't know the domain name or user name, contact the network (server) administrator.

Password

Enter the password with which to access the destination folder for data.

►►► Note

- If you don't know the password, contact the network (server) administrator.

PIN Code

PIN code is a security code for accessing the folder selected in **Shared Folder Name in Destination** on the printer's operation panel. Set it to prevent unauthorized access or changes to the settings by a third party.

►►► Important

- Enter at least four characters using letters, numbers and/or symbols.
- The default value (0000) is set. When not specifying the PIN code, delete "0000."
- When setting the PIN code, be sure to write it down for future reference since you will need to enter it in cases such as setting the folder as the destination folder for received fax data or for data scanned from the operation panel of the printer.
- If you have forgotten the PIN code, delete the folder from **Destination Folder Setting List**, then add it again.
- When editing the destination folder, enter the PIN code that you set at the time of adding the folder.

Connection Test

Click to check for a connection to the folder in which to save data.

►►► Important

- Make sure of the following before performing **Connection Test**.
 - The printer is turned on
 - The printer and computer are connected to the network
 - Another software or user is not using the printer
 - An error is not displayed on the operation panel of the printer
- If the connection test fails, specifying **Shared Folder Name in Destination** using only letters, numbers and/or symbols may help establish a connection.

Instructions

Opens this guide.

OK

Click to apply the addition and edits.

►►► Important

- If **Connection Test** has not been clicked, the utility automatically checks if it can connect to the destination folder for data.

Make sure of the following before clicking **OK**.

- The printer is turned on
- The printer and computer are connected to the network
- Another software or user is not using the printer
- An error is not displayed on the operation panel of the printer

Troubleshooting

An Authentication Screen Appears after Selecting Printer Information

When an authentication screen appears after selecting **Printer Information**, you need to enter the user name and password. For details, see Administrator Password.

Messages Displayed in Status and Solutions

For messages displayed in **Status** of the **Printer Management** dialog and what to do with them, see below.

| Message | Solution |
|---|--|
| Not Found: Failed to acquire printer information. | Make sure your printer and the computer are connected correctly, and then click Remove to delete the printer. After that, add the printer again. |
| The printer is already registered. | The same printer is already registered. Click Remove to delete the printer. |
| The printer is already registered with a different connection. | The same printer is registered with multiple connections. Check Connection for a printer registered with an unused connection, and then click Remove to delete it. |
| The printer connection has been changed. Check the connection status. | A different printer is connected to the registered connection. Click Remove to delete the printer, and then add the printer again. |
| Cannot connect to the destination folder for scans and fax data. | The time zone may not be set correctly. Set the time zone on your printer correctly. |

General Notes (Quick Utility Toolbox)

Quick Utility Toolbox is subject to the following restrictions. Keep these points in mind.

- For products supporting Quick Utility Toolbox, see our website.
- Available functions and settings vary depending on your printer and the country/region setting. Internet connection is required depending on the function to be used. Internet connection fees apply.
- In this guide, descriptions are mainly based on the screens displayed when using macOS High Sierra 10.13.

About Downloading the Corresponding Software

- To use each function, you need to install the corresponding software. Access our website to download and install the software.
Internet connection is required for downloading. Internet connection fees apply.

What You Can Do with Quick Utility Toolbox

Quick Utility Toolbox is a shortcut menu that allows you to easily start the functions you want to use. You can quickly start the utilities supporting Quick Utility Toolbox to set up or manage the printer, or access this guide with one click.

You can also set a network folder as the destination for images scanned from the operation panel of the printer and for received fax data.



Starting Software from Quick Utility Toolbox

In Quick Utility Toolbox, you can start software or open manuals from the Main Screen.

▶▶▶ Note

- The **Management Tool** tab does not appear if supported software is not installed.



1. Click (Quick Utility Toolbox) in the Dock.

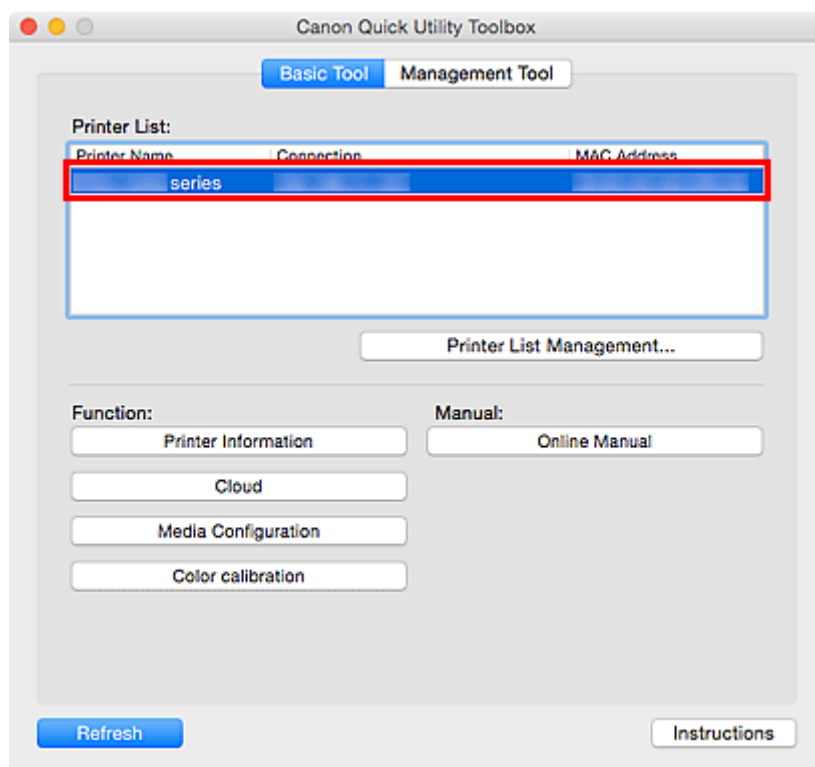
The Main Screen appears.

- ➔ [Main Screen \(MB series / iB series / GX series\)](#)
- ➔ [Main Screen \(PRO series / TX series / TM series / TA series / TZ series / GP series / TC series\)](#)

▶▶▶ Note

- When the icon is not registered to the Dock, from the **Go** menu of Finder, select **Applications**, then click the **Canon Utilities** folder, **Quick Utility Toolbox** folder, and then **Canon Quick Utility Toolbox** icon.

2. Select printer you want to use from **Printer List**.

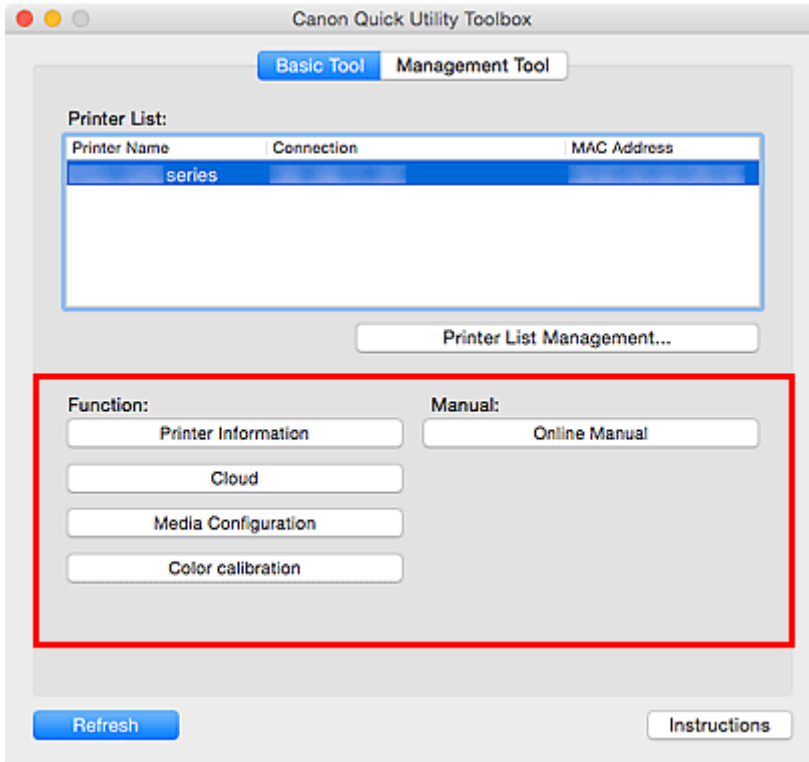


Items corresponding to the selected printer appear in **Function**.

▶▶▶ Note

- If the printer you want to use is not displayed in **Printer List**, click **Printer List Management...** and add the printer in the displayed [Printer Management dialog](#).

3. Click the item you want to use.



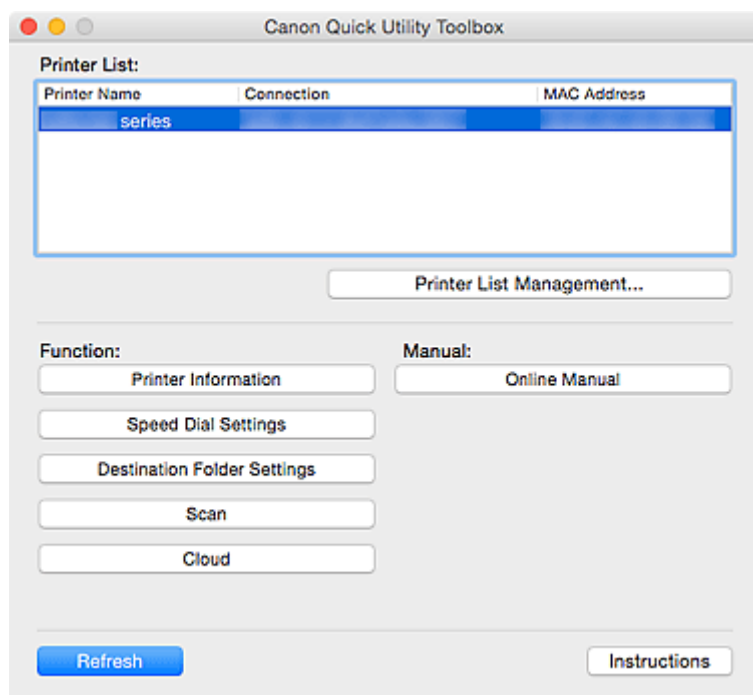
The software starts or manual opens.

▶▶▶ **Note**

- Items displayed in **Function** and the available functions vary depending on the printer selected in **Printer List**.

Main Screen (MB series / iB series / GX series)

You can start software or open manuals.



Printer List

Printers added from **Add Printer...** in the **Printer Management** dialog appear.

»» Important

- Some functions are not available when a printer connected to a single computer is shared in a network environment and used from multiple computers.

Printer List Management...

Click to display the [Printer Management dialog](#) for managing (adding, setting, etc.) the printers that appear in **Printer List**.

Function

Displays the items supported by the printer selected in **Printer List** and available functions.

Printer Information

Starts a Web browser in which you can check the printer information or use the utility functions.

»» Important

- To use this function, the printer and computer must be connected over a network.
- This function is not available if the printer is registered with the IPv6 address. Register the printer with the Bonjour name or IPv4 address.

»» Note

- When an authentication screen appears, you need to enter the user name and password. For details, see Administrator Password.

Speed Dial Settings

Starts the Speed Dial Utility with which you can edit the fax/telephone numbers registered to the printer.

Destination Folder Settings

Starts Folder Setting Utility with which you can set a network folder as the destination for images scanned from the operation panel of the printer and for received fax data.

►► Important

- To use this function, the printer and computer must be connected over a network.

►► Note

- If a password entry screen appears, enter the administrator password set to the printer, and then click **OK**. If you are not sure, contact the administrator. For the password, see Administrator Password.

Scan

Starts the application with which you can scan photos, documents, etc.

Cloud

Starts a Web browser and displays Canon Inkjet Cloud Printing Center. Using the printer's cloud function, you can register/manage applications or check the printer's print status, errors, ink status, etc. from smartphones and tablets.

►► Note

- Items displayed in **Function** and the available functions vary depending on the printer selected in **Printer List**.
- For details on the corresponding software, see the Online Manual displayed by clicking **Online Manual**.

Manual

Online Manual

Opens the manual of the printer selected in **Printer List**.

Refresh

Click this to refresh the displayed contents.

Instructions

Opens this guide.

Related Topic

- ➔ [Starting Software from Quick Utility Toolbox](#)

Main Screen (PRO series / TX series / TM series / TA series / TZ series / GP series / TC series)

You can start software or open manuals.

➔ [Basic Tool Tab](#)

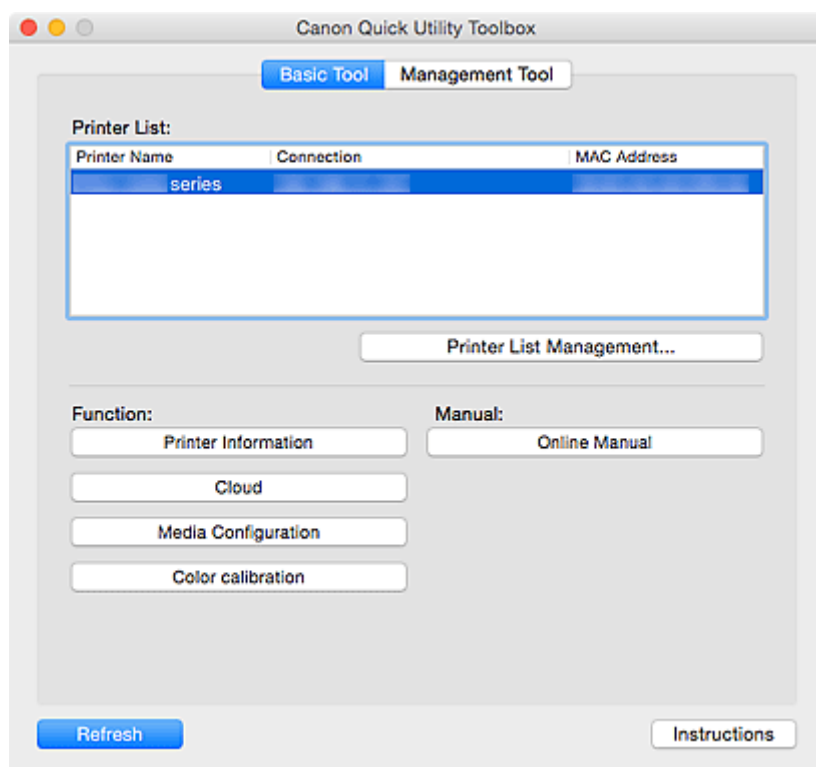
➔ [Management Tool Tab](#)

▶▶▶ Note

- If supported software is not installed, the **Management Tool** tab does not appear and the contents of the **Basic Tool** tab appear in the Main Screen.

Basic Tool Tab

Start software or open manuals for the selected printer.



Printer List

Printers added from **Add Printer...** in the **Printer Management** dialog appear.

▶▶▶ Important

- Some functions are not available when a printer connected to a single computer is shared in a network environment and used from multiple computers.

Printer List Management...

Click to display the [Printer Management dialog](#) for managing (adding, setting, etc.) the printers that appear in **Printer List**.

Function

Displays the items supported by the printer selected in **Printer List** and available functions.

Printer Information

Starts a Web browser in which you can check the printer information or use the utility functions.

▶▶▶ Important

- To use this function, the printer and computer must be connected over a network.
- This function is not available if the printer is registered with the IPv6 address. Register the printer with the Bonjour name or IPv4 address.

▶▶▶ Note

- When an authentication screen appears, you need to enter the user name and password. For details, see Administrator Password.

Cloud

Starts a Web browser and displays Canon Inkjet Cloud Printing Center. Using the printer's cloud function, you can register/manage applications or check the printer's print status, errors, ink status, etc. from smartphones and tablets.

Media Configuration

Starts Media Configuration Tool for adding or editing the paper information on the printer.

To use this function, you need to install Media Configuration Tool. Download Media Configuration Tool from our website.

Color calibration

Starts Calibration Tool for making adjustments so that the selected printer's print results will be in the correct color tones.

For more details, click Home to return to the top page of the Online Manual for your model and search for "Performing Color Calibration," and then see Step 4 onwards.

Destination Folder Settings

Starts Folder Setting Utility with which you can set a network folder as the destination for images scanned from the operation panel of the printer and for received fax data.

▶▶▶ Important

- To use this function, the printer and computer must be connected over a network.

▶▶▶ Note

- If a password entry screen appears, enter the administrator password set to the printer, and then click **OK**. If you are not sure, contact the administrator. For the password, see Administrator Password.

Scan

Starts the application with which you can scan photos, documents, etc.

▶▶▶ Note

- Items displayed in **Function** and the available functions vary depending on the printer selected in **Printer List**.
- For details on the corresponding software, see the Online Manual displayed by clicking **Online Manual**.

Manual

Online Manual

Opens the manual of the printer selected in **Printer List**.

Refresh

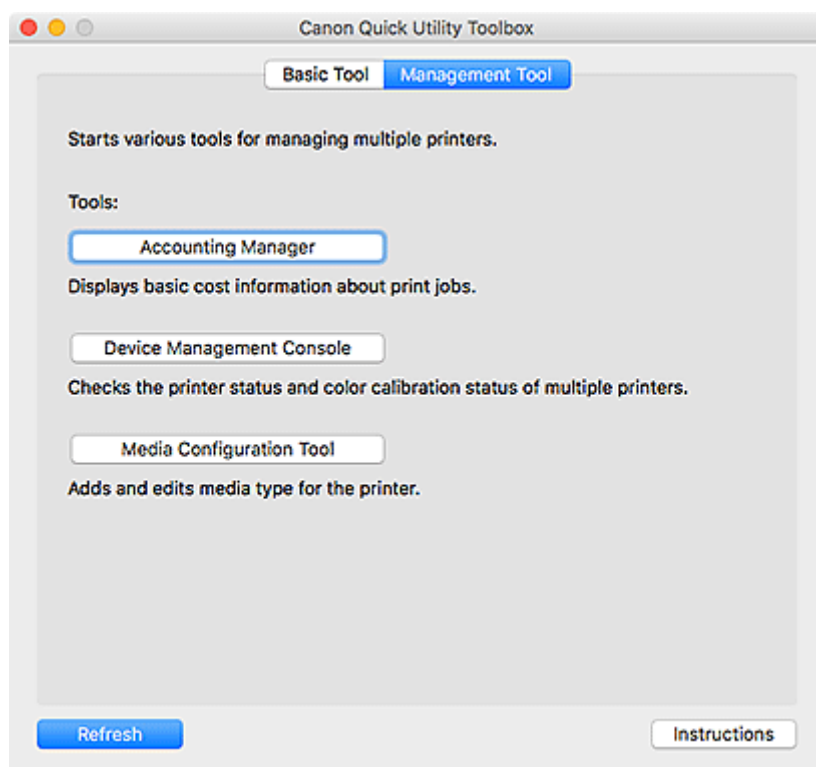
Click this to refresh the displayed contents.

Instructions

Opens this guide.

Management Tool Tab

Start various software programs for managing multiple printers or open their manuals.



Tools

Accounting Manager

Starts Accounting Manager for calculating the printer's printing costs by department or user.

Device Management Console

Starts Device Management Console for checking multiple printer conditions or the calibration status.

Media Configuration Tool

Starts Media Configuration Tool for adding or editing the paper information on the printer.

▶▶▶ Note

- To use these applications, you need to install them additionally.
- For details on each application, see the Online Manual.

Refresh

Click this when the software you want to use is not displayed in **Tools**.

Instructions

Opens this guide.

Related Topic

➔ [Starting Software from Quick Utility Toolbox](#)

Printer Management Dialog

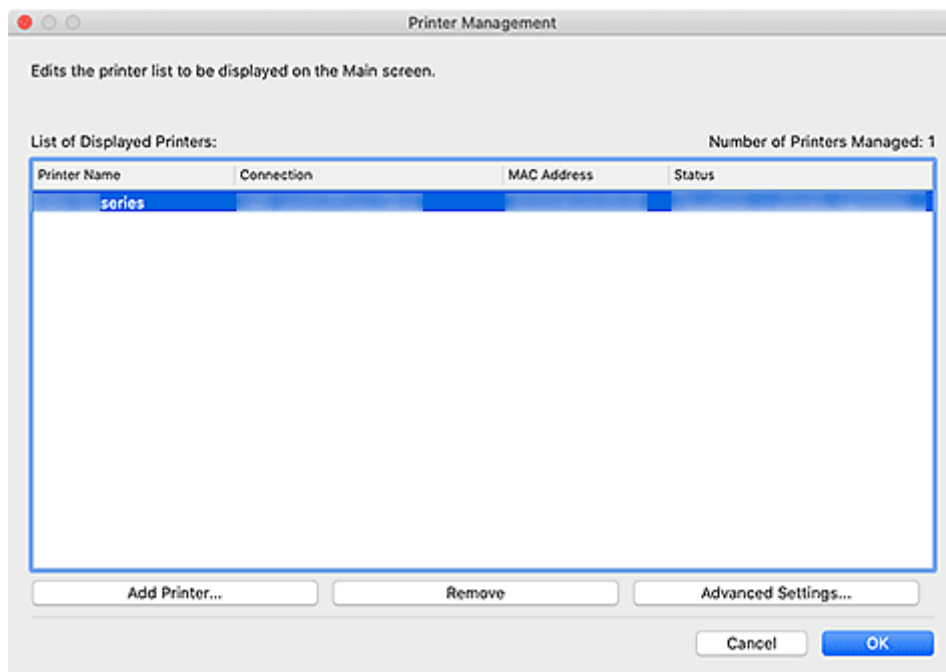
Add printers that appear in **Printer List** in the Main Screen or set the display names of the printers.

To display the **Printer Management** dialog, click **Printer List Management...** in the Main Screen.

➔ [Printer Management Dialog](#)

➔ [Add Printer Dialog](#)

Printer Management Dialog



List of Displayed Printers

Displays a list of registered printers.

➤➤➤ Note

- For messages displayed in **Status** and what to do with them, see [Troubleshooting](#).
- If you are using a model supporting wired LAN, the MAC address of the wired LAN appears in **MAC Address** even when it is connected via Wi-Fi.

Add Printer...

Click to display the [Add Printer dialog](#). Search for printers and select the printer(s) you want to register.

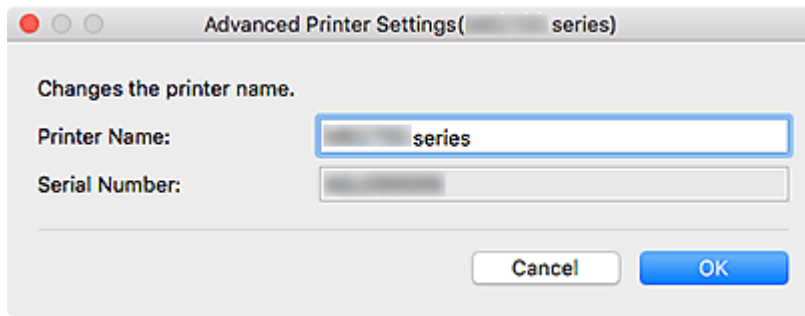
Remove

Cancels the registration of the printer specified in **List of Displayed Printers**.

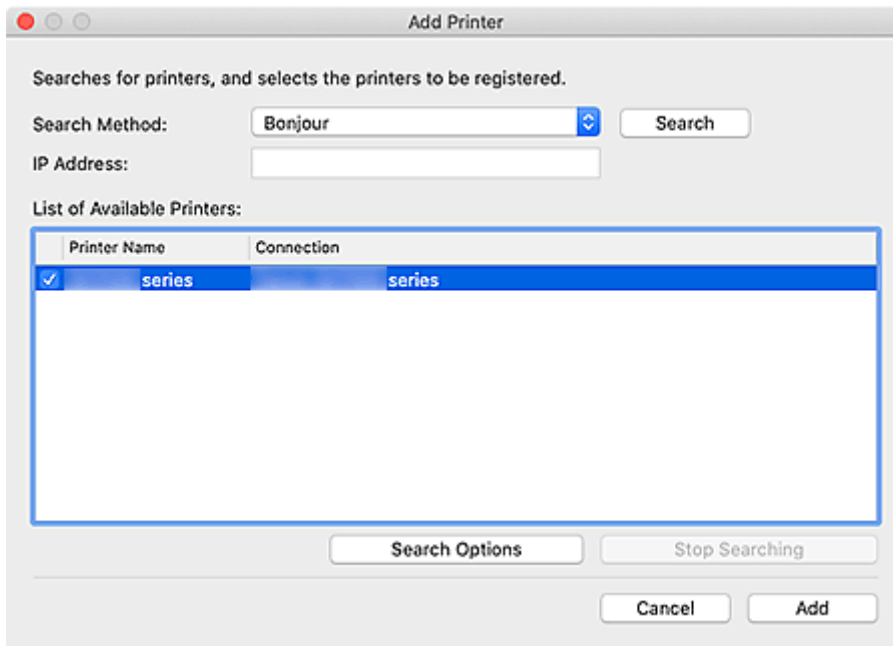
Advanced Settings...

Click to display the **Advanced Printer Settings** dialog for changing the printer's display name or checking the printer's serial number.

To change the printer's display name, enter the desired name in **Printer Name**, and then click **OK**.



Add Printer Dialog



Search Method

Select a printer search method.

Select **Bonjour**, **Auto (IPv4/IPv6)**, **IPv4**, **IPv6**, or **USB**.

IP Address

If **IPv4** or **IPv6** is selected for **Search Method**, enter the printer's IP address.

Search

Click to search for printers.

List of Available Printers

Displays a list of found printers.

Select the checkbox(es) to select the printer(s).

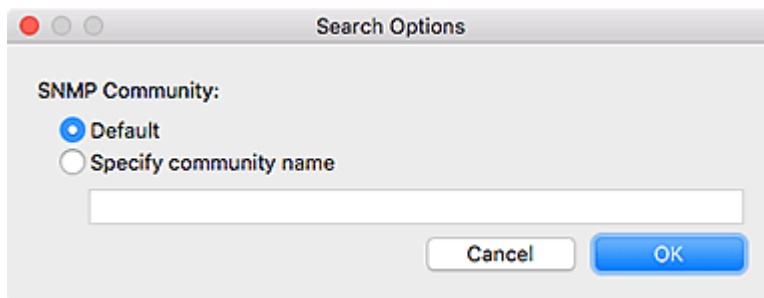
►►► Note

- If you select **Auto (IPv4/IPv6)** and search, each of a printer's IP addresses (IPv4 and IPv6) may appear as a different printer in the search result. Select either one and add.
- If printers connected over a network do not appear, make sure the computer being used for search and the printer are on the same subnet. If not on the same subnet, check the printer's IP address, and then specify **IPv4** or **IPv6** and search.

- If you are using an MB, iB, or GX series printer and you search by specifying **Auto (IPv4/IPv6)**, **IPv4**, or **IPv6**, the printer may not appear in the search result. Search by specifying **Bonjour**.

Search Options

Click to display the **Search Options** dialog for specifying the community name.



▶▶▶ Note

- This function is available when **Auto (IPv4/IPv6)**, **IPv4**, or **IPv6** is selected for **Search Method**.

Stop Searching

Stops the printer search.

Add

Click to add the printer(s) selected in **List of Available Printers**.

Dock Icon



Use  (Quick Utility Toolbox) in the Dock to fully utilize Quick Utility Toolbox.

Click to display the Main Screen.

Control-click to display a menu for the following settings.

Display Guide Message

Shows or hides guide messages.

When a guide message appears, select the **Do not show this message again** checkbox to hide the guide message thereafter.

Destination Folder Settings

- **Setting the Destination**
- **Folder Setting Utility Window**
 - **Add Destination Folder/Edit Destination Folder Dialog**

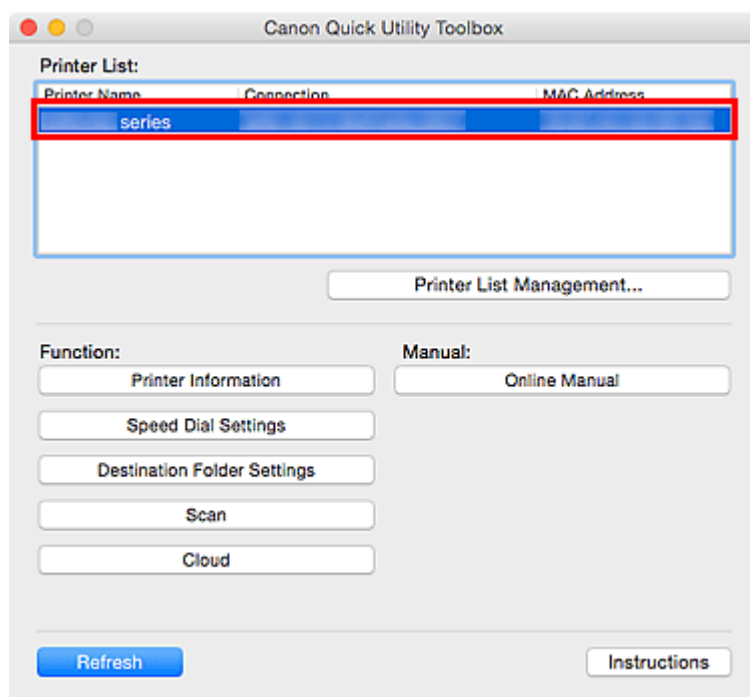
Setting the Destination

You can set a network folder as the destination for images scanned from the operation panel of the printer and for received fax data.

- ➔ [Adding Destination Folders](#)
- ➔ [Setting the Auto Save Location for Fax Data](#)

Adding Destination Folders

1. Open the Main Screen.
2. Select printer you want to use from **Printer List**.

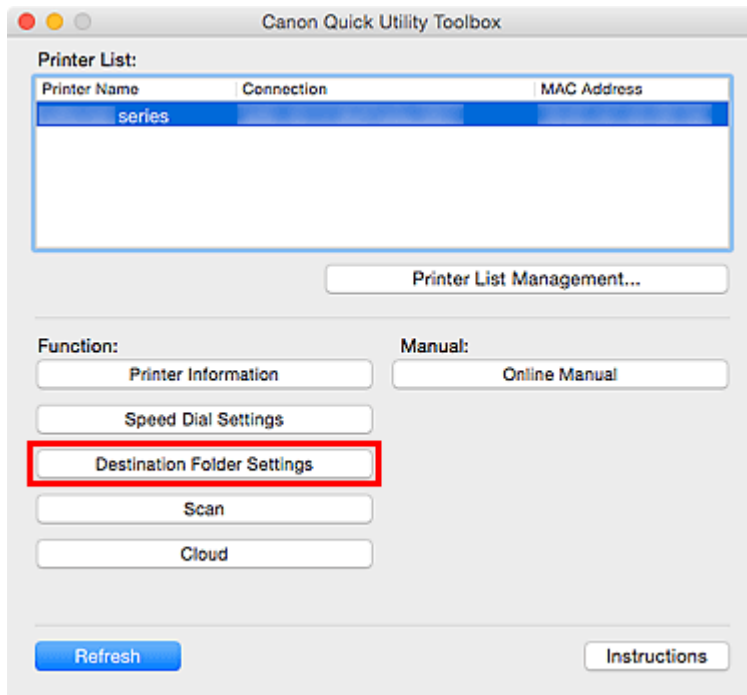


Items corresponding to the selected printer appear in **Function**.

➤➤➤ Note

- If your printer is not displayed in **Printer List**, click **Printer List Management...** and add the printer in the displayed [Printer Management dialog](#).

3. Click **Destination Folder Settings** from the items displayed in **Function**.

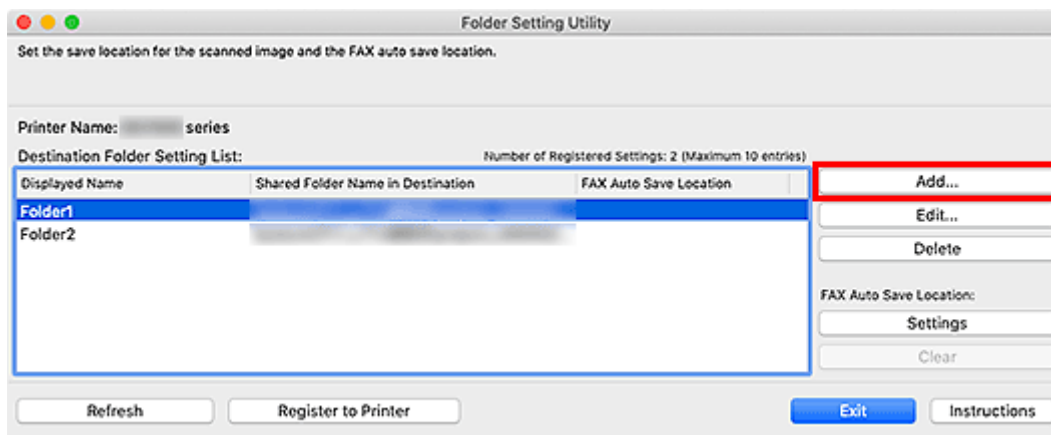


The [Folder Setting Utility window](#) appears.

➤➤➤ Note

- A password entry screen may appear before the [Folder Setting Utility window](#) appears. If it appears, enter the administrator password set to the printer, and then click **OK**. If you are not sure, contact the administrator. For the password, see Administrator Password.

4. Click **Add...**



The **Add Destination Folder** dialog appears.

5. Enter **Displayed Name**, **Shared Folder Name in Destination**, and other information.

»»» Important

- **Displayed Name** and **Shared Folder Name in Destination** are required entry fields.

»»» Note

- For notes on entering each field, see [Add Destination Folder/Edit Destination Folder Dialog](#).

6. Click **Connection Test**.

Check if you can connect to the specified folder.

»»» Important

- Make sure of the following before performing **Connection Test**.
 - The printer is turned on
 - The printer and computer are connected to the network
 - Another software or user is not using the printer
 - An error is not displayed on the operation panel of the printer

7. Check the message, then click **OK**.

8. Click **OK** in the **Add Destination Folder** dialog.

9. Click **Register to Printer**.

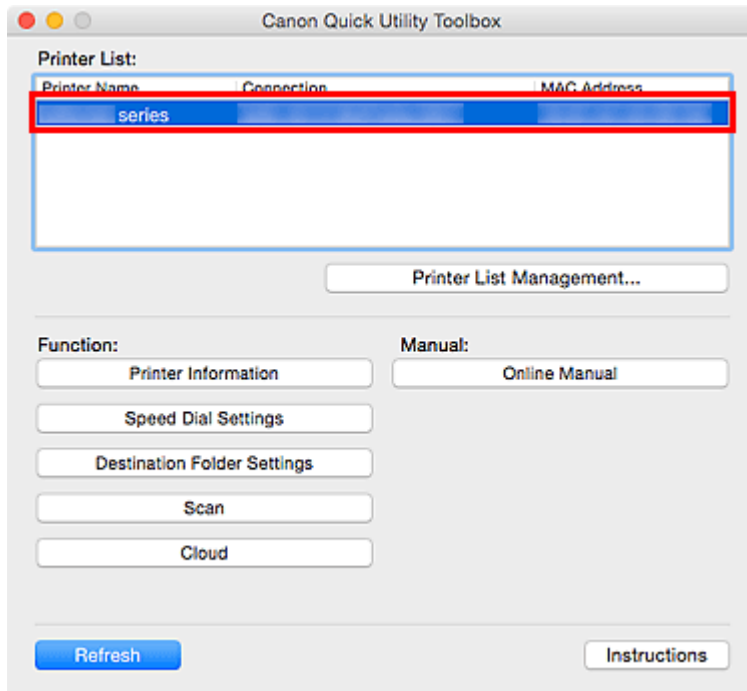
10. Check the message, then click **OK**.

Setting the Auto Save Location for Fax Data

Set one of the folders displayed in **Destination Folder Setting List** as the auto save location for fax data.

1. Open the Main Screen.

2. Select printer you want to use from **Printer List**.

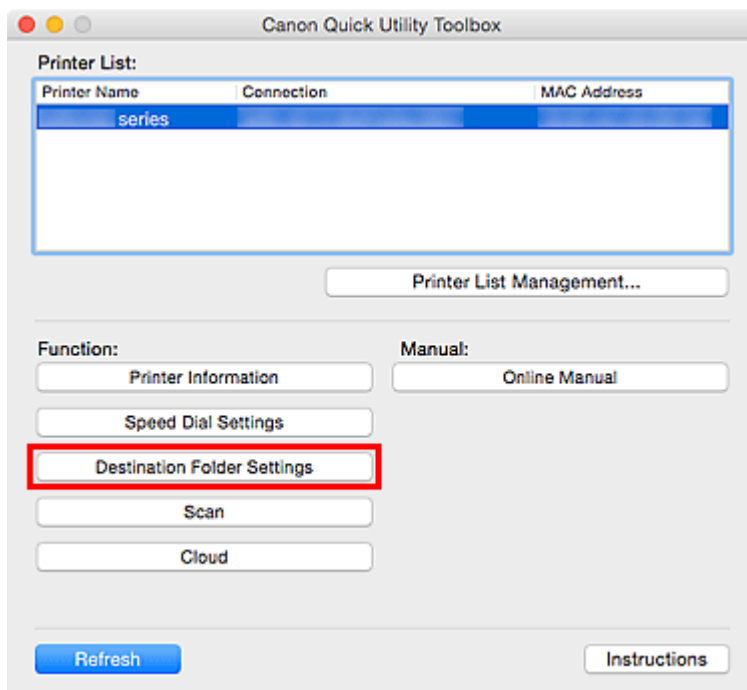


Items corresponding to the selected printer appear in **Function**.

►►► **Note**

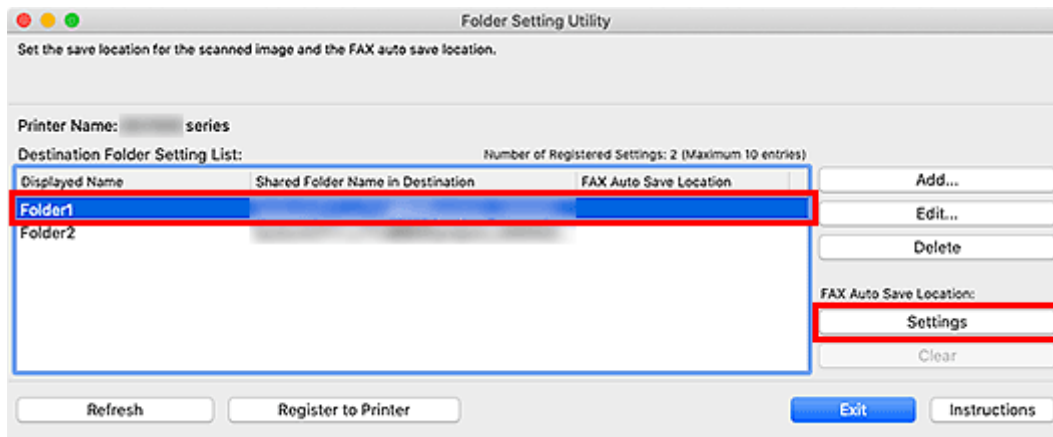
- If your printer is not displayed in **Printer List**, click **Printer List Management...** and add the printer in the displayed [Printer Management dialog](#).

3. Click **Destination Folder Settings** from the items displayed in **Function**.



The [Folder Setting Utility window](#) appears.

4. Select one of the folders you want to use as the save location from **Destination Folder Setting List**, then click **Settings**.



▶▶▶ Note

- When no folder is displayed in **Destination Folder Setting List**, add a destination folder.
 - ➔ [Adding Destination Folders](#)
- If a PIN code entry screen appears, enter the code.

5. Check the message, then click **OK**.

✔ (Checkmark) appears in **FAX Auto Save Location** of the set folder.

6. Click **Register to Printer**.

7. Check the message, then click **OK**.

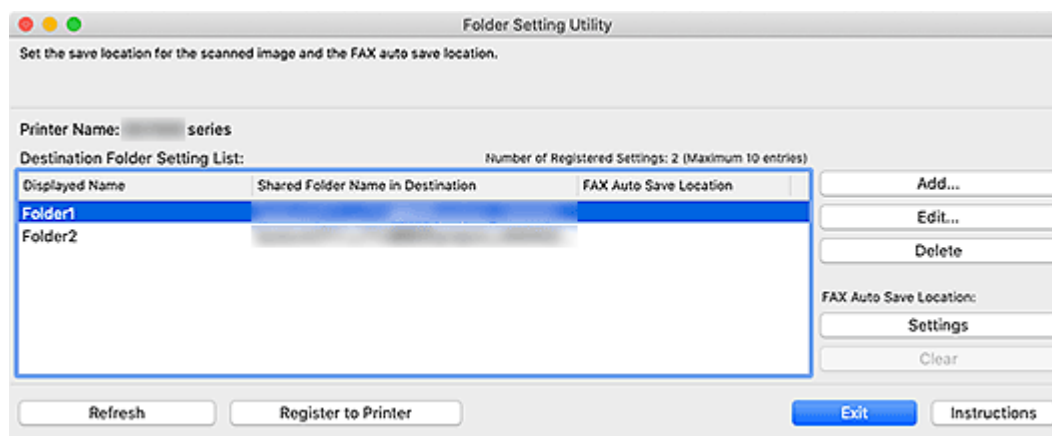
Folder Setting Utility Window

You can set a network folder as the destination for images scanned from the operation panel of the printer and for received fax data.

To display the **Folder Setting Utility** window, click **Destination Folder Settings** in the Main Screen.

►►► Note

- The displayed items and available functions vary depending on the printer selected in **Printer List**.



Printer Name

Displays the printer name selected in the [Main Screen](#).

Destination Folder Setting List

Displays the list of destination folders for data.

Add...

Click to display the [Add Destination Folder dialog](#) in which you can add destination folders.

Edit...

Click to display the [Edit Destination Folder dialog](#) for editing the **Displayed Name**, **Shared Folder Name in Destination**, and other information of the folder specified in **Destination Folder Setting List**.

►►► Note

- When editing a folder to which PIN code is set, a PIN code entry screen appears.

Delete

Deletes the folder specified in **Destination Folder Setting List**.

FAX Auto Save Location

Settings

Sets the folder specified in **Destination Folder Setting List** as the auto save location for fax data.

►►► Note

- When setting a folder to which PIN code is set, a PIN code entry screen appears.

Clear

Removes the folder specified in **Destination Folder Setting List** from the auto save location for fax data.

Refresh

Reads the destination folder setting information from the printer again.

»» Important

- Make sure of the following before clicking **Refresh**.
 - The printer is turned on
 - The printer and computer are connected to the network
 - Another software or user is not using the printer
 - An error is not displayed on the operation panel of the printer

Register to Printer

Registers the settings to the printer.

»» Important

- Make sure of the following before clicking **Register to Printer**.
 - The printer is turned on
 - The printer and computer are connected to the network
 - Another software or user is not using the printer
 - An error is not displayed on the operation panel of the printer

Exit

Closes the **Folder Setting Utility** window.

Instructions

Opens this guide.

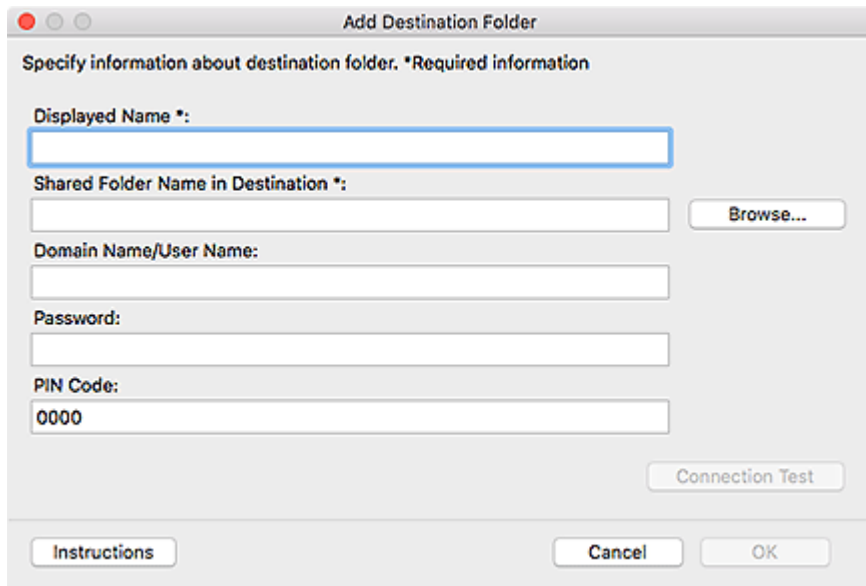
Related Topic

➔ [Setting the Destination](#)

Add Destination Folder/Edit Destination Folder Dialog

Add or edit folders in which to save images scanned from the printer's operation panel and received fax data.

To display the **Add Destination Folder** or **Edit Destination Folder** dialog, click **Add...** or **Edit...** in the **Folder Setting Utility** window.



Displayed Name

Enter the name you want to display on the printer's operation panel.

►►► Important

- **Displayed Name** is a required entry field.
- Use only the characters that can be entered on the operation panel of your printer.

Shared Folder Name in Destination

Specify the destination folder for data. Click **Browse...**, and then select a folder.

►►► Important

- **Shared Folder Name in Destination** is a required entry field.
- Enter a folder such as a shared network folder in the form of "\\server name\folder name". Separate the server name and folder names with backslashes.

Domain Name/User Name

Enter the domain name and user name with which to access the destination folder for data.

►►► Note

- If a domain name is required, enter it in the form of "domain name\user name". Separate the domain name and user name with a backslash.
- If you don't know the domain name or user name, contact the network (server) administrator.

Password

Enter the password with which to access the destination folder for data.

▶▶▶ Note

- If you don't know the password, contact the network (server) administrator.

PIN Code

PIN code is a security code for accessing the folder selected in **Shared Folder Name in Destination** on the printer's operation panel. Set it to prevent unauthorized access or changes to the settings by a third party.

▶▶▶ Important

- Enter at least four characters using letters, numbers and/or symbols.
- The default value (0000) is set. When not specifying the PIN code, delete "0000."
- When setting the PIN code, be sure to write it down for future reference since you will need to enter it in cases such as setting the folder as the destination folder for received fax data or for data scanned from the operation panel of the printer.
- If you have forgotten the PIN code, delete the folder from **Destination Folder Setting List**, then add it again.
- When editing the destination folder, enter the PIN code that you set at the time of adding the folder.

Connection Test

Click to check for a connection to the folder in which to save data.

▶▶▶ Important

- Make sure of the following before performing **Connection Test**.
 - The printer is turned on
 - The printer and computer are connected to the network
 - Another software or user is not using the printer
 - An error is not displayed on the operation panel of the printer
- If the connection test fails, specifying **Shared Folder Name in Destination** using only letters, numbers and/or symbols may help establish a connection.

Instructions

Opens this guide.

OK

Click to apply the addition and edits.

▶▶▶ Important

- If **Connection Test** has not been clicked, the utility automatically checks if it can connect to the destination folder for data.

Make sure of the following before clicking **OK**.

- The printer is turned on
- The printer and computer are connected to the network
- Another software or user is not using the printer
- An error is not displayed on the operation panel of the printer

Troubleshooting

An Authentication Screen Appears after Selecting Printer Information

When an authentication screen appears after selecting **Printer Information**, you need to enter the user name and password. For details, see Administrator Password.

Messages Displayed in Status and Solutions

For messages displayed in **Status** of the **Printer Management** dialog and what to do with them, see below.

| Message | Solution |
|---|--|
| Not Found: Failed to acquire printer information. | Make sure your printer and the computer are connected correctly, and then click Remove to delete the printer. After that, add the printer again. |
| The printer is already registered. | The same printer is already registered. Click Remove to delete the printer. |
| The printer is already registered with a different connection. | The same printer is registered with multiple connections. Check Connection for a printer registered with an unused connection, and then click Remove to delete it. |
| The printer connection has been changed. Check the connection status. | A different printer is connected to the registered connection. Click Remove to delete the printer, and then add the printer again. |
| Cannot connect to the destination folder for scans and fax data. | The time zone may not be set correctly. Set the time zone on your printer correctly. |