

Canon

TR8600 series

Getting Started

Online Setup

Detailed instructions and videos are available on the Canon website.

.....

Setup a Computer



<https://ij.start.canon>

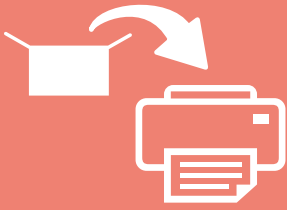
Setup a Smartphone



Read **Safety and Important Information** (addendum) first.



QT63764V01

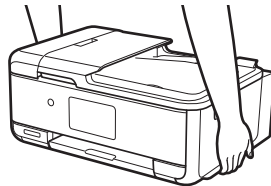


Installing the Printer.....page 1

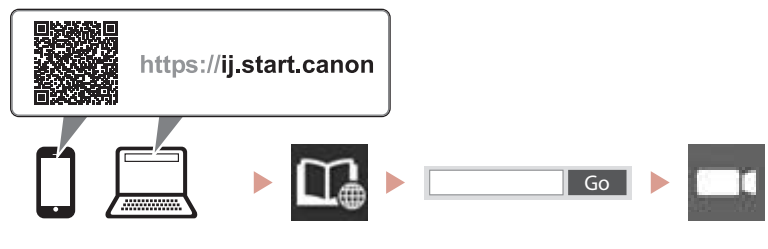


Connecting to a Computer, Smartphone or Tablet.....page 6

Holding the Printer



Instructional Videos

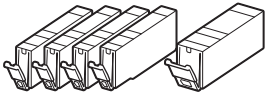


Setting Up the Printer

 **Online Setup**
<https://ij.start.canon> 

1. Box Contents

- Ink Tanks for setup

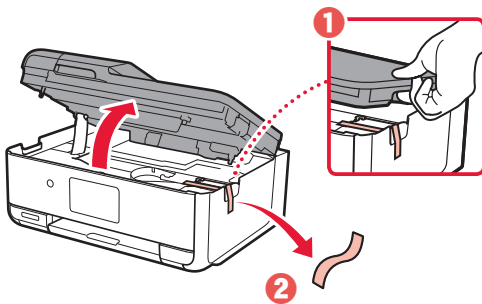


- Power Cord
- Phone Cable
- Setup CD-ROM
- Safety and Important Information
- Getting Started (this manual)

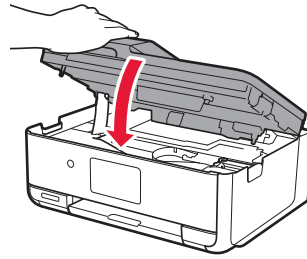
2. Removing Packing Materials



- 1 Remove and dispose of any protective film and orange tape.
 - Using the printer with orange tape or protective film still attached, may cause the printer to malfunction.
- 2 Open the scanning unit / cover and remove the orange tape.



- 3 Close the scanning unit / cover.

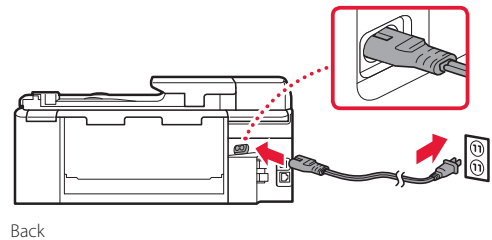


▲ Caution
Watch your fingers.

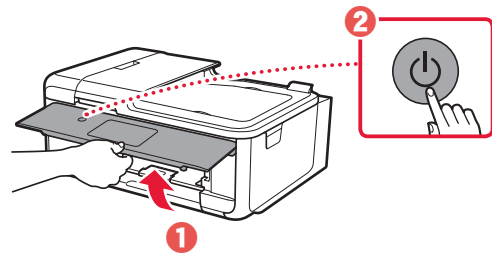
3. Turning on the Printer



- 1 Connect the power cord.
 - The plug is set at an angle.

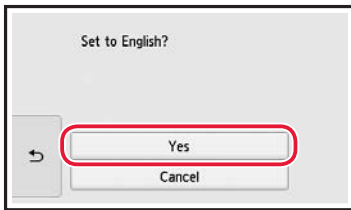
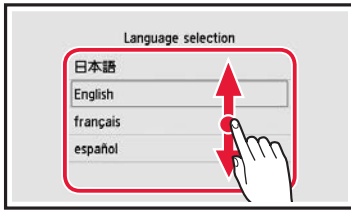


- 2 Open the operation panel and press the **ON** button.

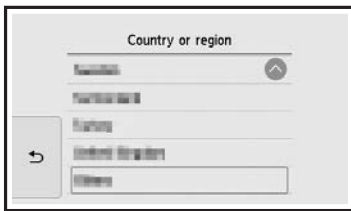


Setting Up the Printer

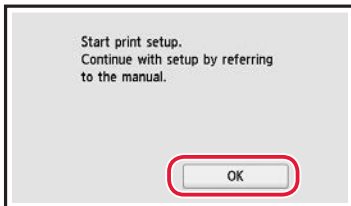
- 3 Scroll and tap to select your language, and then tap **Yes**.



- 4 If the following screen appears, tap your country or region to select.



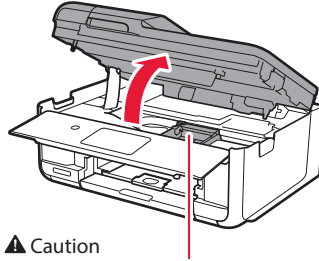
- 5 Tap **OK**.



4. Installing the Ink Tanks



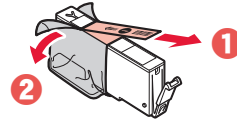
- 1 Open the scanning unit / cover.



⚠ Caution

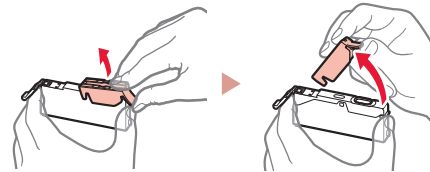
Do not touch the print head holder until it stops moving.

- 2 Remove the tape and film on the ink tank.



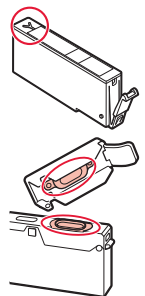
- Check that no tape or film is left.

- 3 Slowly remove the orange cap.



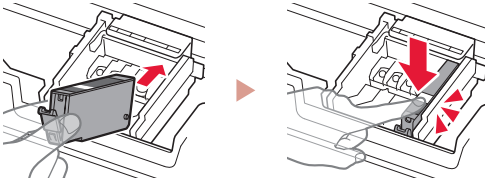
▶▶▶ Important

- Do not squeeze the ink tank with the Y-shaped air hole blocked.
- Do not touch the areas shown in red.

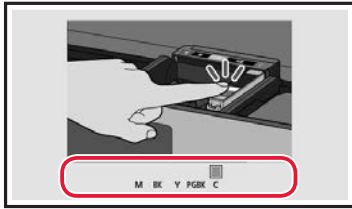


4 Install the ink tank.

- Insert the ink tank into the print head and press down until it clicks.



5 Check that the color of the ink tank you installed appears on the screen.

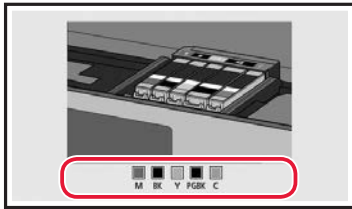


Important

If the color is not displayed on the screen even though you have installed the ink tank, the color of the ink tank may be wrong or you may have installed an ink tank, such as one with a different model number, that is not supported by this printer. Either install an ink tank for the correct color or use the provided ink tank for setup.

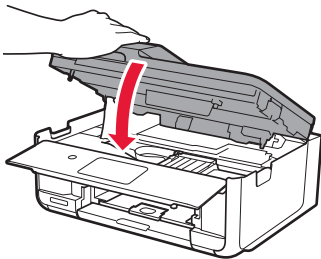
6 Repeat steps 2 through 5 to install all the ink tanks.

- Check that all the colors appear.



7 Close the scanning unit / cover.

- The printer will start initializing.

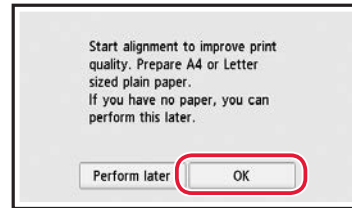


Caution
Watch your fingers.

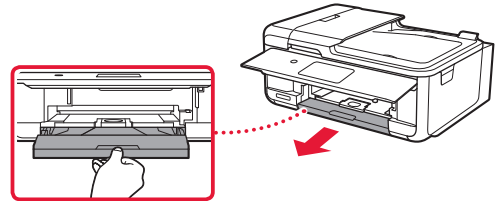
5. Loading Paper



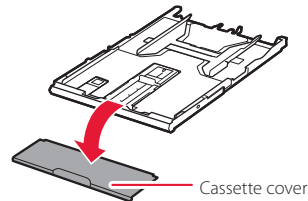
1 Tap OK.



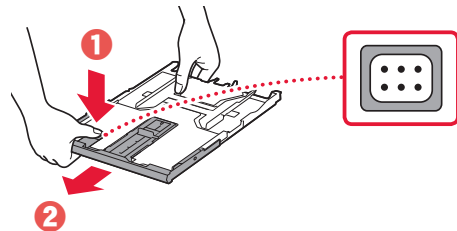
2 Remove the cassette from the printer.



3 Remove the cassette cover.

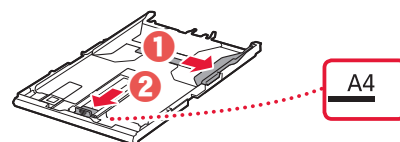


4 While pressing on the lock of the cassette, extend the cassette.



5 Slide apart the paper guides.

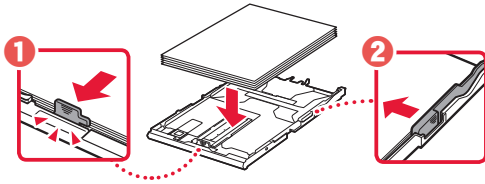
- Slide the right paper guide to the right edge. Align the front paper guide with the A4 mark.



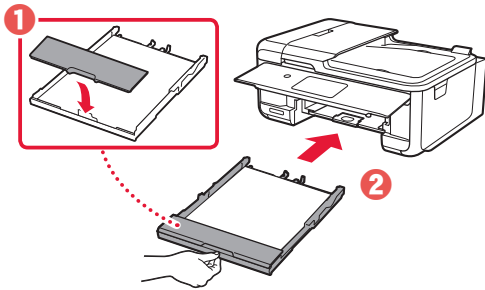
Setting Up the Printer

6 Load A4 sized plain paper.

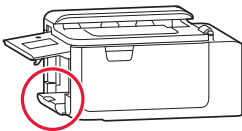
- Place the paper against the front paper guide, and align the right paper guide to the width of the paper.



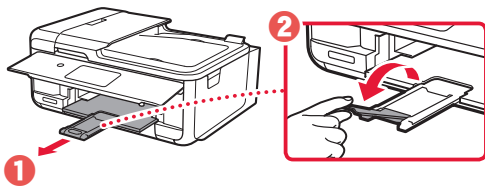
7 Attach the cassette cover and replace the cassette.



- Look at it from the side to confirm it looks like the diagram.



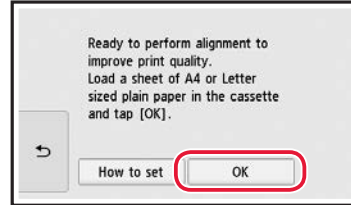
8 Pull out the paper output tray.



6. Aligning Print Head

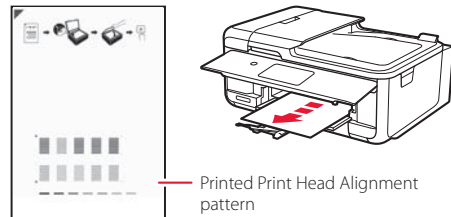


1 Tap **OK**.



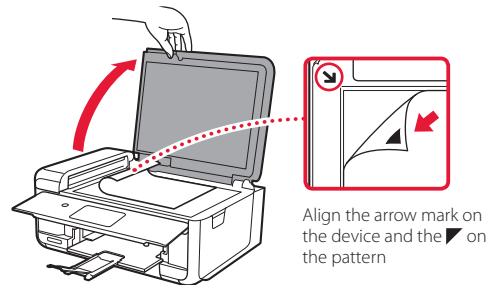
- The Print Head Alignment pattern starts printing.

2 Check that the pattern is printed.

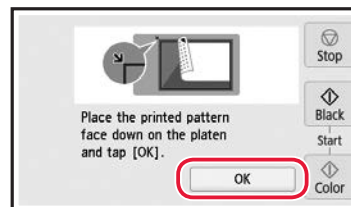


3 Place the pattern on the platen.

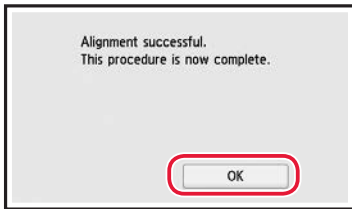
- Open the document cover and place the print side facing down.



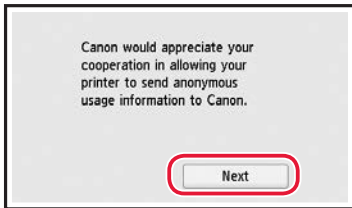
4 Close the document cover and tap **OK**.



5 When the following screen appears, tap **OK**.



6 Tap **Next**.



- Follow the on-screen instructions to continue setup. This includes making selections related to sending information. Refer to "Sending Information To Canon" in **Safety and Important Information**.

7 Check that the following screen appears.



If you will use the printer without connecting any other devices, setup is now complete.

Select the connection method that best matches how you will use the printer.

- To use the printer without connecting to any other devices

➔ Setup is now complete.

To set up a fax, see "Using Fax Function" on page 8.

- To use the printer connecting to a computer or smartphone

➔ Proceed to the next page.

Setting Up the Printer

What device are you connecting?



Computer



Computer and
smartphone





Smartphone

7-a

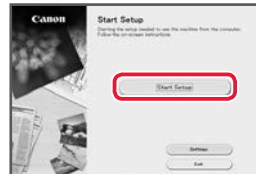
Connecting to a Computer

If you are using multiple computers, perform these steps on each computer.



- 1 Access the Canon website from your computer.
 <https://ij.start.canon>
- 2 Select  **Set Up**.
- 3 Enter your printer's model name and click **Go**.
- 4 Click **Start**.
- 5 Click **(B) Connecting to a Computer/ Smartphone**.
 - The following steps are for Windows users.

- 6 Click **Download**.
- 7 Run the downloaded file.
- 8 Click **Start Setup**.



- 9 Follow the on-screen instructions.
 - These operations may take some time.
 - To connect to a smartphone as well, see "7-b. Connecting to a Smartphone" on page 7.
 - To set up a fax, see "Using Fax Function" on page 8.



Using the Setup CD-ROM

Double click **EasySetup.exe** in the CD-ROM, and then continue from step 3. If you do not have an internet connection, open the **win** folder in the CD-ROM and double click **SETUP.exe**. This will install the printer driver.

7-b Connecting to a Smartphone

If you are using multiple smartphones, perform these steps on each smartphone.



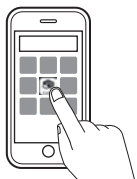
1 Install the "Canon PRINT Inkjet/SELPHY" app on your smartphone.



- Search for "Canon PRINT" in App Store, or Google Play.
- Access the Canon website to download the app.



2 Open the installed app, and follow the on-screen instructions in the app to add your printer.

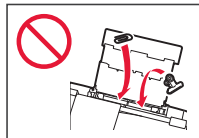
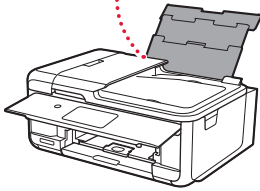
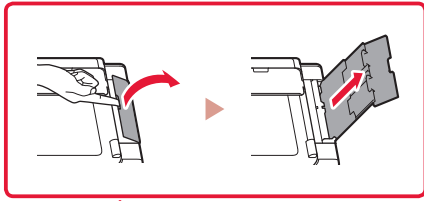


-
- Once you have added your printer, you can print from your smartphone. To print photos, see "Loading Photo Paper" on page 8.
 - To set up a fax, see "Using Fax Function" on page 8.
-

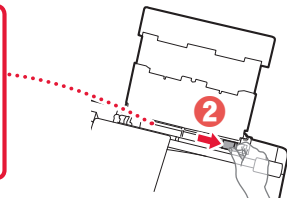
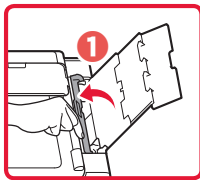
Loading Photo Paper

Photo paper can only be loaded in the rear tray.

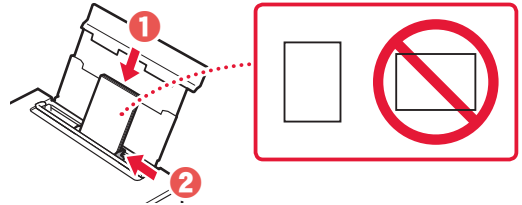
- 1 Open the rear tray cover and extend the paper support.



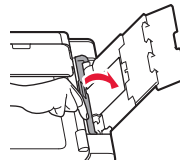
- 2 Open the feed slot cover and slide the right-hand side paper guide to the far right.



- 3 Load several sheets of photo paper with the print side facing up and slide the side paper guide against the edge of the paper stack.



- 4 Close the feed slot cover.
 - Follow the on-screen instructions to set information for the loaded paper.



Using Fax Function



The fax function of your printer requires setup. Refer to **FAX Setup Guide**.

- Access the FAX Setup Guide

- 1 Access the Canon website.

 <https://ij.start.canon>

- 2 Click  **See Recommended Functions.**

- 3 Click **Functions/Services.**

- 4 Click  **Setting Up the FAX.**



Access Online Manual

From your browser



<https://ij.start.canon>

