

Canon

G3060 series

G3020 series

Getting Started

Online Setup

Detailed instructions and videos are available on the Canon website.

.....

Setup a Computer



<https://ij.start.canon>

Setup a Smartphone



Read **Safety and Important Information** (addendum) first.



QT63698V01

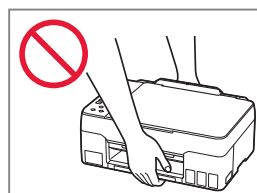
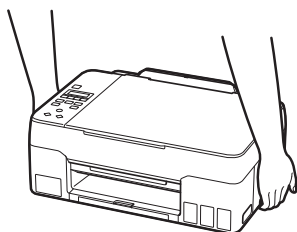


Installing the Printer.....page 1



Connecting to a Computer, Smartphone or Tablet.....page 4

Holding the Printer



Instructional Videos



<https://ij.start.canon>



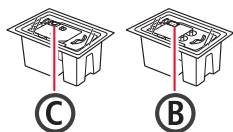
3. XXXXXXXXXXXXXXXXXXXX



Setting Up the Printer

1. Box Contents

● Print Heads



● Ink Bottles

● Power Cord

● Setup CD-ROM

● Safety and Important Information

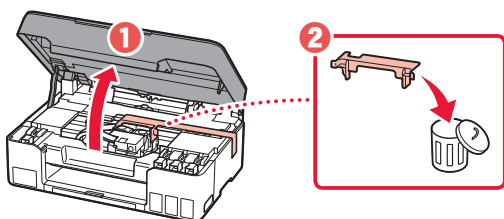
● Getting Started (this manual)

2. Removing Packing Materials



1 Remove and dispose of any packing materials and orange tape.

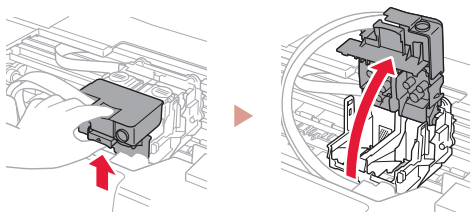
2 Open the scanning unit / cover, remove and dispose of the orange tape and protective material inside.



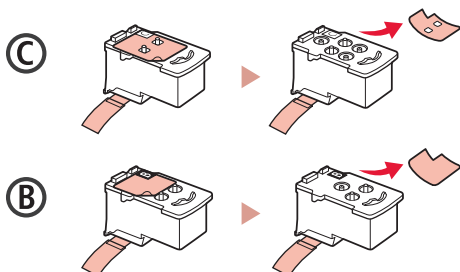
3. Installing the Print Heads



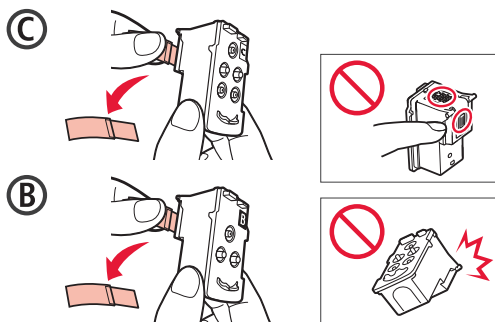
1 Open the print head locking cover.



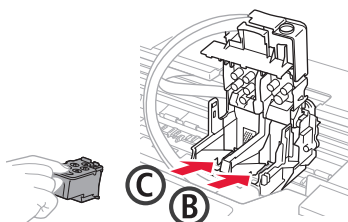
2 Take out each print head from the package and remove the label.



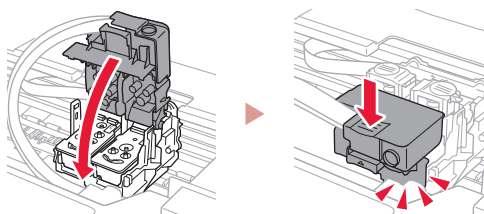
3 Remove the protective tape.



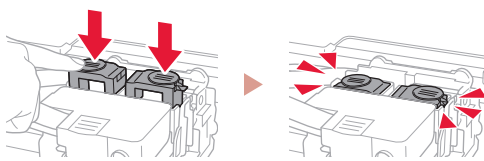
4 Insert the C (color) print head on the left and the B (black) print head on the right.



5 Close the print head locking cover and press down until it clicks.



6 Press down both joint buttons completely until they click.

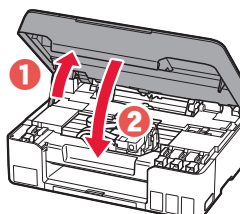


Check!



7 Close the scanning unit / cover.

● Open the scanning unit / cover fully and then close it.



⚠ Caution

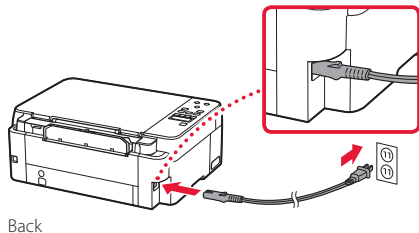
Watch your fingers.

Setting Up the Printer

4. Turning on the Printer

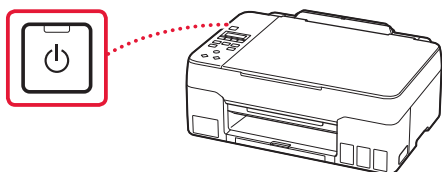


- 1 Connect the power cord.



Back

- 2 Press the **ON** button.



- 3 When the following screen appears, use the ◀ and ▶ buttons to select a language, and then press the **OK** button.



Important

If an error appears on the screen, see "If an error message (support code) appears on the screen" on page 3 and follow the instructions.

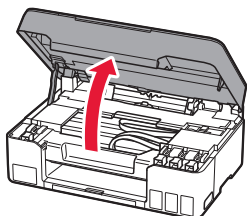
5. Pouring Ink



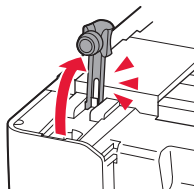
Important

This product requires careful handling of ink. Ink may splatter when the ink tanks are filled with ink. If ink gets on your clothes or belongings, it may not come off.

- 1 Open the scanning unit / cover.

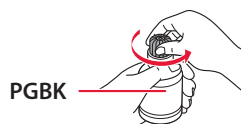


- 2 Open the tank cap on the left of the printer.

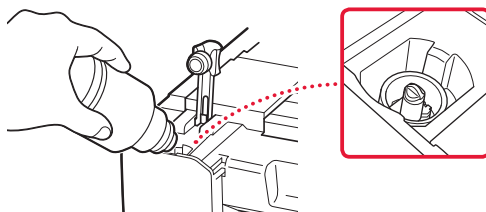


- 3 Hold the ink bottle upright and gently twist the bottle cap to remove.

Check!

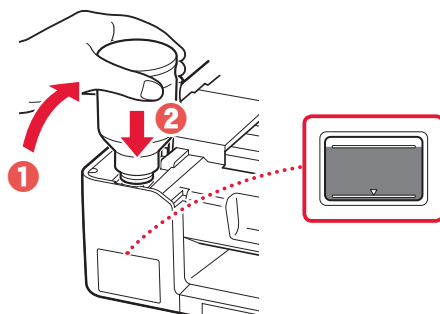


- 4 Align the nozzle of the ink bottle with the inlet.



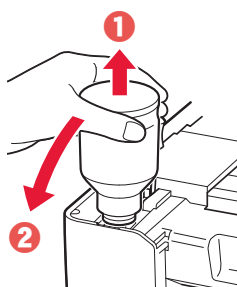
- 5 Slowly stand the ink bottle upside down and push down to pour the ink.

- If the ink does not pour, gently remove the ink bottle and try again.

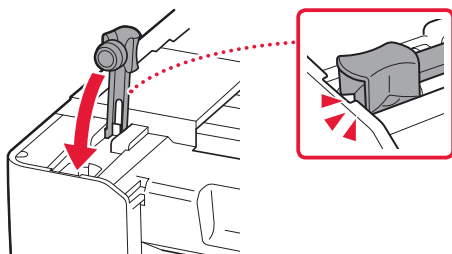


- 6 Gently remove the ink bottle from the inlet.

- Be careful not to spill the ink.

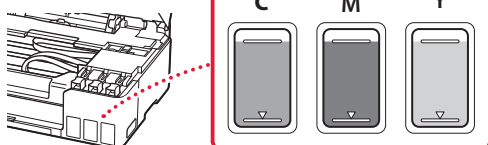


7 Replace the tank cap **securely**.



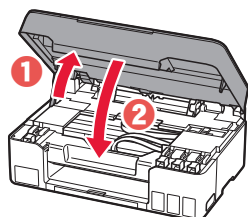
8 Repeat steps 2 through 7 to pour all ink into the corresponding ink tanks on the right.

Check!



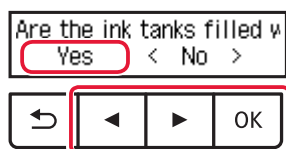
9 Close the scanning unit / cover.

- Open the scanning unit / cover fully and then close it.



Caution
Watch your fingers.

10 When the following screen appears, use the ◀ and ▶ buttons to select **Yes**, and then press the **OK** button.



Initializing ink system...
About 1 min. remaining

- Please wait momentarily until the following screen appears. Follow the on-screen instructions, and then press the **OK** button.

Setup is complete
[OK]Next

Copy
100% 01

If you will use the printer without connecting any other devices, setup is now complete.

Select the connection method that best matches how you will use the printer.

- To use the printer without connecting to any other devices
➔ Setup is now complete.
- To use the printer connecting to a computer or smartphone
➔ Proceed to the next page.

? If an error message (support code) appears on the screen

Protective material remaining
Support code 1890 — Support code

Check the support code, and then follow the instructions if the displayed code is written below.

- **1890**
Protective material remaining.
➔ "2. Removing Packing Materials" on page 1
- **1470**
Print heads are not installed correctly.
➔ "3. Installing the Print Heads" on page 1
- **1471**
Print heads cannot be recognized.
➔ "3. Installing the Print Heads" on page 1
- **5200**
Ink system preparation was not completed successfully.
Press the **ON** button to restart the printer, and then see "5. Pouring Ink" on page 2.

For all other cases, refer to the **Online Manual**.

Setting Up the Printer

What device are you connecting?



Computer



Computer and
smartphone



Smartphone





6-a

Connecting to a Computer

If you are using multiple computers, perform these steps on each computer.



- 1 Access the Canon website from your computer.
 **<https://ij.start.canon>**
- 2 Select  **Set Up.**
- 3 Enter your printer's model name and click **Go.**
- 4 Click **Start.**
- 5 Click **(B) Connecting to a Computer/Smartphone.**
 - The following steps are for Windows users.
- 6 Click **Download.**
- 7 Run the downloaded file.
 - Follow the on-screen instructions.
 - This may take some time.
 - To connect to a smartphone as well, see "6-b. Connecting to a Smartphone" on page 5.



Using the Setup CD-ROM

Double click **EasySetup.exe** in the CD-ROM, and then continue from step 3. If you do not have an internet connection, open the **win** folder in the CD-ROM and double click **SETUP.exe**. This will install the printer driver.

6-b

Connecting to a Smartphone

If you are using multiple smartphones, perform these steps on each smartphone.



1 Install the "Canon PRINT Inkjet/SELPHY" app on your smartphone.

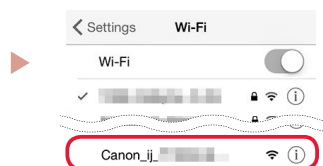


- Search for "Canon PRINT" in App Store, or Google Play.
- Access the Canon website to download the app.



2 Open your smartphone's Wi-Fi settings. Check that the network name (SSID) that starts with "Canon_ij_" appears.

(Example of iOS screen)



The network name (SSID) that starts with "Canon_ij_"

- If "Canon_ij_" appears → Proceed to step 3.
- If "Canon_ij_" does not appear → Proceed to step 4.

3 Tap the network name (SSID) that starts with "Canon_ij_"

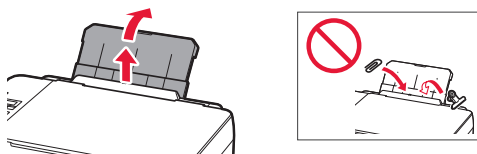
4 Open the installed app, and follow the on-screen instructions in the app to add your printer.



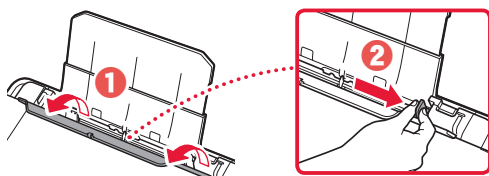
Once you have added your printer, you can print from your smartphone.
To print photos, see "Loading Paper" on page 6.

Loading Paper

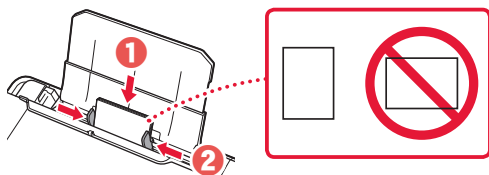
- 1 Extend the paper support.



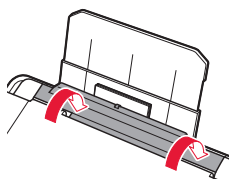
- 2 Open the feed slot cover and slide the right-hand side paper guide to the far right.



- 3 Load several sheets of paper with the print side facing up and slide the side paper guide against the edge of the paper stack.



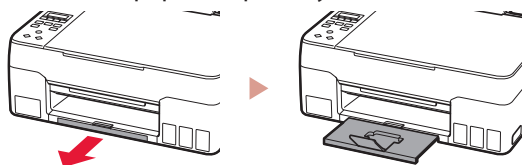
- 4 Close the feed slot cover.



- 5 When **Save the rear tray paper information** appears on the printer's screen, press the **OK** button.

- 6 Select the paper size and type, and press the **OK** button.

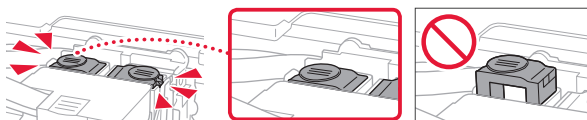
- 7 Extend the paper output tray.



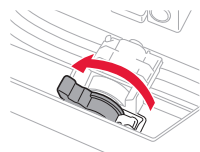
Transporting Your Printer

When relocating the printer, check the following. Refer to the **Online Manual** for details.

Check that both joint buttons are pressed down completely to avoid ink leaks.

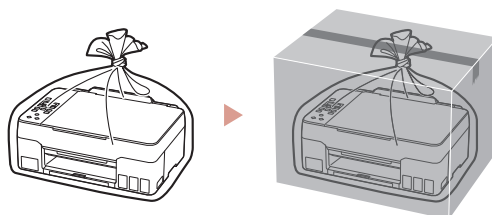


Check that the position of the ink valve lever is closed.



Pack the printer in a plastic bag in case ink leaks.

- Pack the printer in a sturdy box so that it is placed with its bottom facing down, using sufficient protective material to ensure safe transport.
- Do not tilt the printer. Ink may leak.
- Please handle with care and ensure the box remains flat and NOT turned upside down or on its side, as the printer may be damaged and ink in the printer may leak.
- When a shipping agent is handling transport of the printer, have its box marked "THIS SIDE UP" to keep the printer with its bottom facing down. Mark also with "FRAGILE" or "HANDLE WITH CARE".



Trademarks

- Windows is a trademark or registered trademark of Microsoft Corporation in the U.S. and/or other countries.
- App Store is a trademark of Apple Inc., registered in the U.S. and other countries.
- Google Play is a registered trademark of Google LLC..



Access Online Manual

From your browser



<https://ij.start.canon>

