

Canon

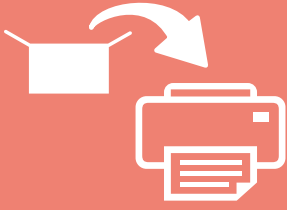
TR4600 series

Getting Started

Read **Safety and Important Information**
(addendum) first.



QT64214V01

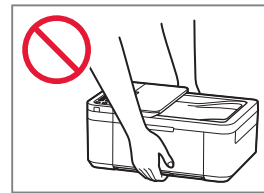
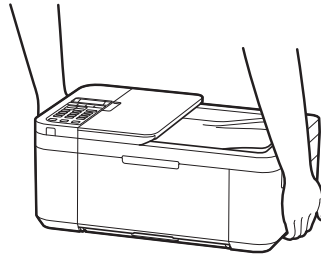


Installing the Printer.....page 1



Connecting to a Computer, Smartphone or Tablet.....page 4

Holding the Printer



Setting Up the Printer



For Setup, visit the URL

<https://ij.start.canon/TR4660>

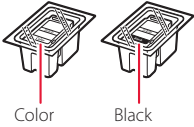
or scan the code with your mobile device



● Follow the instructions below if you do not have an internet connection.

1. Box Contents

● Ink Cartridges



Color

Black

● Power Cord

● Phone Cable

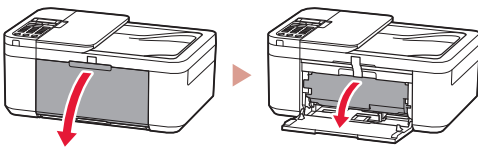
● Safety and Important Information

● Getting Started (this manual)

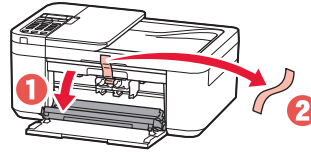
2. Removing the Orange Tape

1 Remove the orange tape.

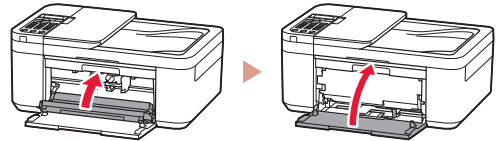
2 Open the front cover, and then open the paper output tray.



3 Open the paper output cover, and then remove the orange tape.

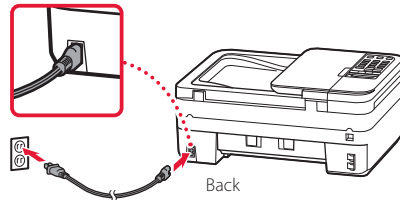


4 Close the paper output tray and the front cover.

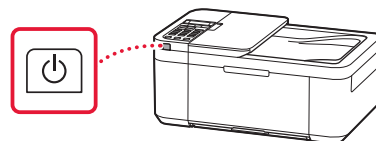


3. Turning on the Printer

1 Connect the power cord.



2 Press the **ON** button.



Setting Up the Printer

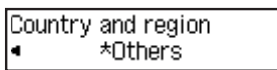
- 3 When the following screen appears, use the ◀ and ▶ buttons to select a language, and then press the **OK** button.



▶▶▶ Important

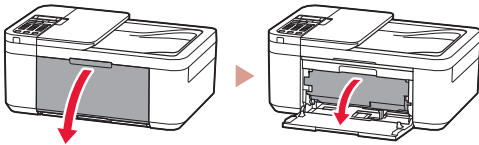
If an error appears on the screen, see "If an error message (support code) appears on the screen" on page 3 and follow the instructions.

- 4 If the following screen appears, select your country or region, and then press the **OK** button.

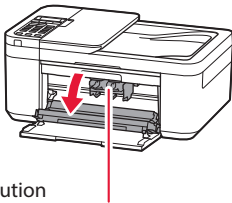


4. Installing the Ink Cartridges

- 1 Open the front cover, and then open the paper output tray.



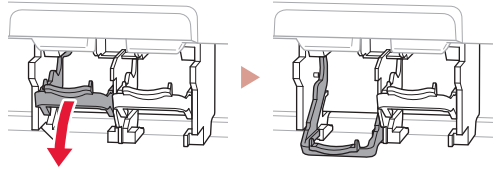
- 2 Open the paper output cover.



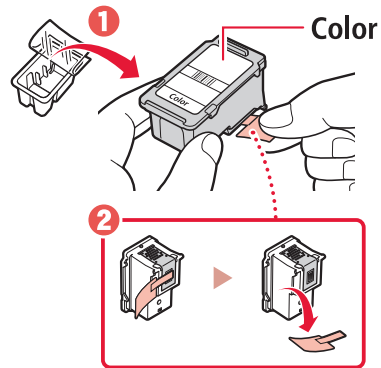
⚠ Caution

Do not touch the ink cartridge holder until it stops moving.

- 3 Lower the ink cartridge lock lever on the left-hand side.

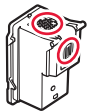


- 4 Remove the Color ink cartridge from the package and remove the orange tape.

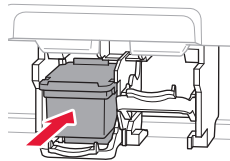


▶▶▶ Important

- Do not touch the ink on the orange tape. It could stain your hands or surrounding objects.
- Do not touch the areas shown in the figure. Otherwise, the printer may not print correctly.



- 5 Insert the Color ink cartridge in the ink cartridge holder.

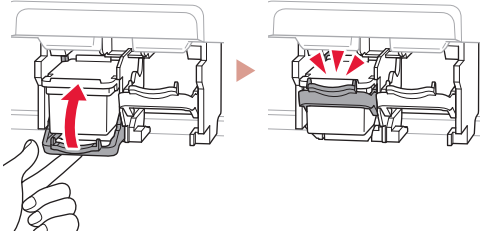


▶▶▶ Important

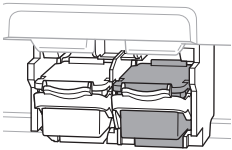
Do not bump the ink cartridge. Doing so may cause a malfunction.



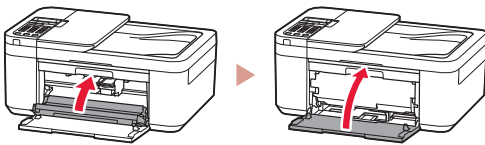
6 Raise the ink cartridge lock lever.



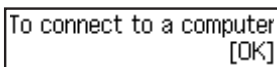
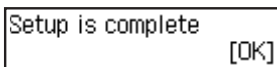
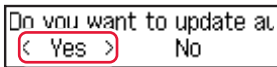
7 Repeat steps 3 to 6 and install the Black ink cartridge on the right-hand side.



8 Close the paper output tray and the front cover.



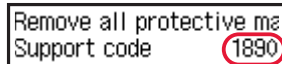
9 Follow the on-screen instructions, and then press the **OK** button.



Select the connection method that best matches how you will use the printer.

- To use the printer without connecting to any other devices
 - ➔ Setup is now complete.
 - To set up a fax, see **"Using Fax Function" on page 5.**
- To use the printer connecting to a computer or smartphone
 - ➔ Proceed to the next page.

? If an error message (support code) appears on the screen



Support code

Check the support code, and then follow the instructions if the displayed code is written below.

- **1890**
Protective material remaining.
 - ➔ "2. Removing the Orange Tape" on page 1
- **168A**
Ink cartridges are not installed correctly.
 - ➔ "4. Installing the Ink Cartridges" on page 2

For all other cases, refer to the **Online Manual**.

Setting Up the Printer

What device are you connecting?



Computer



Computer and
smartphone





Smartphone

5-a

Connecting to a Computer

If you are using multiple computers, perform these steps on each computer.



- 1 Access the Canon website from your computer.
 <https://ij.start.canon>
- 2 Select  **Set Up**.
- 3 Enter your printer's model name and click **Go**.
- 4 Click **Start**, and then select **Connecting to a Computer/Smartphone**.
 - The following steps are for Windows users.
- 5 Click **Download**.
- 6 Run the downloaded file.
 - Follow the on-screen instructions. This may take some time.
 - To connect to a smartphone as well, see "5-b. Connecting to a Smartphone" on page 5.
 - Once you have added your printer, you can print from your Computer. To print, see "Loading Paper" on page 6.
 - To set up a fax, see "**Using Fax Function**" on page 5.

5-b

Connecting to a Smartphone

If you are using multiple smartphones, perform these steps on each smartphone.



1 Install the "Canon PRINT Inkjet/SELPHY" app on your smartphone.



- Search for "Canon PRINT" in App Store, or Google Play.
- Access the Canon website to download the app.



2 Open the installed app, and follow the on-screen instructions in the app to add your printer.



-
- Once you have added your printer, you can print from your smartphone. To print photos, see "Loading Paper" on page 6.
 - To set up a fax, see "**Using Fax Function**" on page 5.
-



Using Fax Function

The fax function of your printer requires setup. Refer to **FAX Setup Guide**.

1 Access the Canon website.



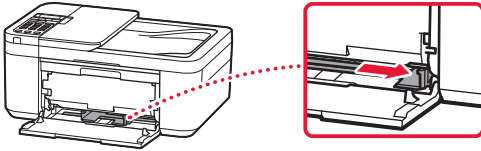
<https://ij.start.canon/fax>

Loading Paper

- 1 Open the front cover.

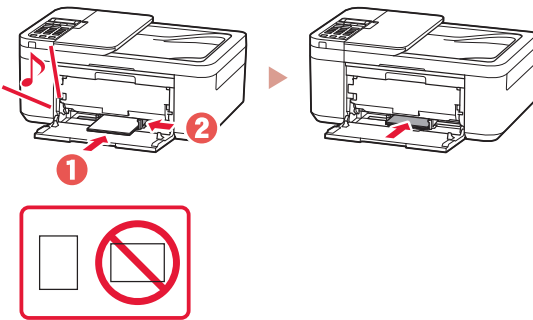


- 2 Slide the right-hand side paper guide to the far right.

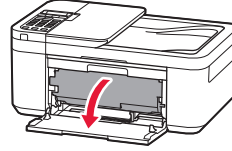


- 3 Load several sheets of paper with the print side facing down, and slide the paper guide against the edge of the paper stack.

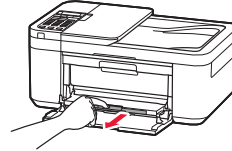
- Push the paper all the way into the cassette.



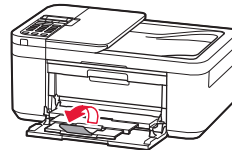
- 4 Open the paper output tray.



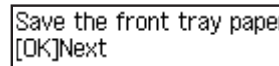
- 5 Pull out the paper output support of the paper output tray.



- 6 Open the output tray extension.



- 7 When the following screen appears, press the **OK** button.



- 8 Select the paper size and type, and press the **OK** button.

If Print Results Are Unsatisfactory

Perform Print Head Alignment if straight lines are crooked or colors are inconsistent, or print results are otherwise not what you expected.

For details, click **Maintenance** on the **Online Manual** and refer to **If Printing Is Faint or Uneven > Aligning the Print Head**. Refer to the back cover for how to access the **Online Manual**.

■ Lines Are Misaligned



■ Uneven or Streaked Colors



Trademarks

- Windows is a trademark or registered trademark of Microsoft Corporation in the U.S. and/or other countries.
- App Store is a trademark of Apple Inc., registered in the U.S. and other countries.
- Google Play is a registered trademark of Google LLC.



Access Online Manual

From your browser



<https://ij.start.canon>

