



Windows

CARPS2/UFR II/UFRII LT Printer Driver

Installation Guide

Contents

Introduction	2
How to Use the Manual	3
Notations Used in the Manual	4
Disclaimers	5
Copyright	6
Trademarks	7
About This Driver	9
Before Use	11
Pre-installation Check	13
System Requirements	14
Services Required for Using the Device Information Retrieval Function	16
Notes and Warnings Regarding Installation	18
How to Refer to the Readme File	19
Installation Using the Installer	21
Installer Types	22
Installing by Discovering Devices on a Network	24
Installing by Specifying a Port or IP Address	30
Installing Using a USB Connection	36
Installing a Driver Using Master Setup	39
Installation Without Using the Installer	42
Installing by Specifying an inf File	43
Installing Using a WSD Port	45
Settings Related to Installation	48
Changing to a Standard TCP/IP Port	49
Shared Printer Settings	53
Configuring Share Print Server Settings	54
Setting up Clients of a Shared Printer	55
Automatically Setting the Device Information Retrieval Function	56
Installing the PPD File	59
Updating Installation and Uninstallation	61
Updating the Driver	62
Uninstalling the Driver	65

Printing	68
Preparations Prior to Printing	69
Setting the Device Options in the Driver	70
Setting the Device Support Functions	72
Precautions to Be Taken When Printing	73
Printing from a Computer	74
Changing the Default Settings for Printing	76
How to Refer to the Help	77
Appendix	79
Creating a Shortcut to the Online Manual	80
Installing the Shortcut to the Online Manual	81
Uninstalling the Shortcut to the Online Manual	82
Cannot discover a device connected via a WSD port	83

Introduction

Introduction	2
How to Use the Manual	3
Notations Used in the Manual	4
Disclaimers	5
Copyright	6
Trademarks	7

Introduction

- ▶ **How to Use the Manual(P. 3)**
- ▶ **Disclaimers(P. 5)**
- ▶ **Copyright(P. 6)**
- ▶ **Trademarks(P. 7)**

How to Use the Manual

This explains things that you need to know in order to use this manual.

▶ **Notations Used in the Manual(P. 4)**

Notations Used in the Manual

This explains symbols and settings used in this manual.

Symbols Used in This Manual

In this manual, explanations of items and operations that must be followed while using the driver are set forth the symbols that indicate the following.



IMPORTANT

- Indicates operational requirements and restrictions. Be sure to read these items carefully to operate the product correctly, and avoid damage to the product.



NOTE

- Indicates a clarification of an operation, or contains additional explanations for a procedure. Reading these notes is highly recommended.

About Settings

In this manual, setting names displayed on the computer screen are represented as shown in the following examples.

Example:

[Print]

[OK]

Disclaimers

The information in this document is subject to change without notice.

CANON INC. MAKES NO WARRANTY OF ANY KIND WITH REGARD TO THIS MATERIAL, EITHER EXPRESS OR IMPLIED, EXCEPT AS PROVIDED HEREIN, INCLUDING WITHOUT LIMITATION, THEREOF, WARRANTIES AS TO MARKETABILITY, MERCHANTABILITY, FITNESS FOR A PARTICULAR PURPOSE OF USE OR NON-INFRINGEMENT. CANON INC. SHALL NOT BE LIABLE FOR ANY DIRECT, INCIDENTAL, OR CONSEQUENTIAL DAMAGES OF ANY NATURE, OR LOSSES OR EXPENSES RESULTING FROM THE USE OF THIS MATERIAL.

Copyright

Copyright CANON INC. 2025

No part of this publication may be reproduced, transmitted, transcribed, stored in a retrieval system, or translated into any language or computer language in any form or by any means, electronic, mechanical, magnetic, optical, chemical, manual, or otherwise, without the prior written permission of Canon Inc.

Trademarks

All brand names and product names appearing on this document are registered trademarks or trademarks of their respective owners.

All other trademarks are the property of their respective owners.

About This Driver

About This Driver 9

About This Driver

This driver is a printer driver for Windows for Canon devices. If you use this driver, you can configure detailed print settings.

Also, if you use Canon Driver Information Assist Service, you can acquire device information, use various device option functions, and use the department management function to acquire authentication information when printing.

In this manual, the function for acquiring device information using Canon Driver Information Assist Service is referred to as the device information acquisition function.

Device information that can be acquired with Canon Driver Information Assist Service is as follows.

- Option information
Information about options (paper supply drawers, finisher, etc.) installed in the device.
- Calibration information
Information acquired whenever you acquire device option information or perform color printing.
- Authentication information when performing department management printing
Authentication information acquired whenever you print when using the department management function.
- User authentication management information
Authentication management information acquired whenever you print when using the user management function.
- Paper information
User-set paper size (custom paper size) information registered in the device.
- Encryption support information



NOTE

- Some functions in the driver software included in the accompanying CD-ROM may not be usable depending on the operating system. The newest version is on the Canon web site. Verify your operating environment etc. and download it if necessary.

Before Use

Before Use 11

Before Use

- The functions that you can use may vary according to the following conditions.
 - The device you are using and its settings
 - The firmware version of the device
 - The option structure of the device
 - The driver version
 - The computer environment you are using
- When printing from a Windows Store app, because you cannot display the print settings screen of the driver, the number of functions you can set is limited.
- The screen content, procedures, etc. displayed and described in the manual may differ from those actually displayed.
- In this manual, examples using Windows 11 are explained.

Pre-installation Check

Pre-installation Check	13
System Requirements	14
Services Required for Using the Device Information Retrieval Function	16
Notes and Warnings Regarding Installation	18
How to Refer to the Readme File	19

Pre-installation Check

This explains what you need to confirm beforehand in order to install the driver correctly.

- ▶ **System Requirements(P. 14)**
- ▶ **Services Required for Using the Device Information Retrieval Function(P. 16)**
- ▶ **Notes and Warnings Regarding Installation(P. 18)**
- ▶ **How to Refer to the Readme File(P. 19)**

System Requirements

This explains the system environments required to use the driver.

System Requirements

Operating Systems

For the CARPS2 printer driver

Windows 10/11

Windows Server 2016/2019/2022/2025

For server-based computing environments:

Operating systems in a server environment

Windows Server 2016/2019/2022/2025

Server components

Citrix Virtual Apps and Desktops 7 2203 (LTSR)/2308/2311/2402 (LTSR)/2407

VMware vSphere 7.0/8.0

Microsoft Application Virtualization (App-V)

Remote Desktop Service on Windows Server 2016/2019/2022/2025

Operating systems for a clustering server

Windows Server 2016/2019/2022/2025

For the UFR II LT printer driver

Windows 10/11

Windows Server 2016/2019/2022/2025

For server-based computing environments:

Operating systems in a server environment

Windows Server 2016/2019/2022/2025

Server components

Citrix Virtual Apps and Desktops 7 2203 (LTSR)/2308/2311/2402 (LTSR)/2407

VMware vSphere 7.0/8.0

Microsoft Application Virtualization (App-V)

Remote Desktop Service on Windows Server 2016/2019/2022/2025

Operating systems for a clustering server

Windows Server 2016/2019/2022/2025

For the UFR II printer driver

Windows Vista/7/8.1/10

Windows Server 2008/2008 R2/2012/2012 R2/2016

For server-based computing environments:

Operating systems in a server environment

Windows Server 2008/2008 R2/2012/2012 R2/2016

Server components

- Citrix Presentation Server 4.5
- Citrix XenApp 5.0/6.0/6.5/7.5/7.6/7.7/7.8/7.9
- Citrix XenDesktop 4.0/5.0/5.5/5.6/7.0/7.1/7.5/7.6/7.7/7.8/7.9
- VMware vSphere 4/5/5.1/5.5/6.0
- Microsoft Application Virtualization (App-V)
- Remote Desktop Service on Windows Server 2012 R2
- TS-RemoteApp on Windows Server 2008

Operating systems for a clustering server

Windows Server 2008/2008 R2 (Enterprise/Datacenter Edition)
 Windows Server 2012/2012 R2/2016

Computer

Any computer which runs the above operating system software properly.



NOTE

- For the support status of the newest operating systems and service packs, check the Canon web site (<https://global.canon/>).

Combinations of Driver and Operating System Display Languages

Depending on the combination of supported driver languages and the display language of the operating system, correct operation may not be guaranteed. It is recommended that you install with the language selected by default when the installer starts.

Supported Driver Languages

English / Arabic / Basque / Catalan / Chinese (Simplified) / Chinese (Traditional) / Czech / Danish / Dutch / Finnish / French / German / Hungarian / Italian / Japanese / Korean / Malay / Norwegian / Polish / Portuguese / Russian / Slovak / Spanish / Swedish / Thai / Turkish / Ukrainian / Vietnamese

Scope of Guaranteed Operation

	Language of operating system included in supported driver languages	Language of operating system not included in supported driver languages
Installed with language matching the operating system	Guaranteed	--
Installed with language not matching the operating system	Guaranteed*	Not guaranteed*

* Operation is only guaranteed when installed with English. However, the layout may be broken or the driver may not be displayed correctly.

Services Required for Using the Device Information Retrieval Function

This section describes the services required for using the device information retrieval function and the installation destination of the device information retrieval function for different usage environments.

Services Required for the Device Information Retrieval Function

If you want to use the device information retrieval function, you need the following services and environments.

Operating System Services

- Remote Procedure (RPC)
- TCP/IP NetBIOS Helper Service
- Workstation

All the above services must be installed in the operating system. A setting other than disabled must be selected for the [Startup type] setting of each service.

Protocols

UDP or TCP (IPv4 or IPv6)

Supported Device Connection Configurations

When connected to a network: TCP/IP

When connected locally (32-bit): USB

Installing the Device Information Retrieval Function in Different Usage Environments

For the device information retrieval function, the device information retrieval path and Canon Driver Information Assist Service installation destination etc. vary according to the following factors.

- Type of print queue (local printer or network printer)
- Connection method of the device (network connection (LPR etc.) or local connection (USB))
- Server environment (terminal server or Citrix Virtual Apps)

The items required for the Canon Driver Information Assist Service installation destination etc. for each combination of the above factors are shown below.

For a local printer:

- When connected to a network: device information can be retrieved with the driver alone
- When connected locally*: Canon Driver Information Assist Service must be installed on the same computer

* For local connections, you may not be able to use the device information retrieval function, depending on the device and environment you are using.

For a network printer:

- When connected to a shared server: Canon Driver Information Assist Service must be installed on the print server

Pre-installation Check

- When connected by IPP: device information can be retrieved with the driver alone (when via IIS, configuration information cannot be retrieved)

Notes and Warnings Regarding Installation

Take care of the following items when installing.

- If a screen requiring you to allow changes to the computer is displayed, allow the changes with an administrator account.
- If a Windows Security screen indicating that the publisher of the driver cannot be verified is displayed, allow installation.
- When acquiring driver information using the Canon Driver Information Assist Service, if a warning regarding removing Windows Firewall blocking is displayed, remove the block.
- If you use the installer to install a driver, you can update existing drivers at the same time that you install the new driver.

How to Refer to the Readme File

In the Readme file are written restrictions and precautions when installing drivers or using drivers.

Refer to the Readme_en-US.hta file in the accompanying CD-ROM or downloaded driver folder.

Installation Using the Installer

Installation Using the Installer	21
Installer Types	22
Installing by Discovering Devices on a Network	24
Installing by Specifying a Port or IP Address	30
Installing Using a USB Connection	36
Installing a Driver Using Master Setup	39

Installation Using the Installer

This explains the procedure for installing using the installer included in the supplied CD-ROM or an installer downloaded from the web site.

Select the procedure most suitable to the device connection configuration and installation method.

- ▶ **Installer Types(P. 22)**
- ▶ **Installing by Discovering Devices on a Network(P. 24)**
- ▶ **Installing by Specifying a Port or IP Address(P. 30)**
- ▶ **Installing Using a USB Connection(P. 36)**
- ▶ **Installing a Driver Using Master Setup(P. 39)**

Installer Types

The installer that starts depends on the target device to install and how the installer was obtained.

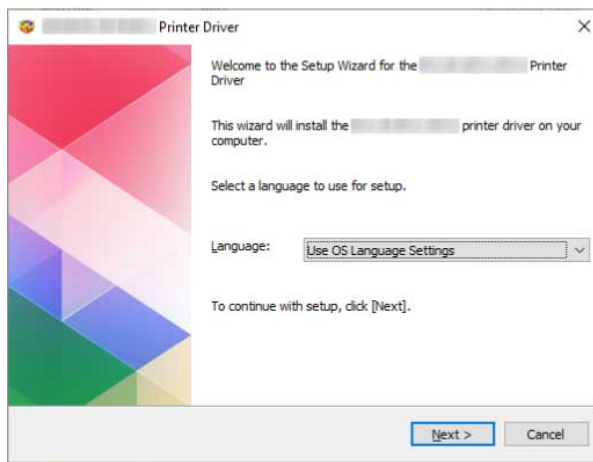
For information on the suitable installer for a device, see the notice included with the device.

Either an integrated installer or Master Setup is used, depending on the device.

There are multiple methods for installing a device, which depend on the type of installer and the connection method and environment of the device. Select the appropriate procedure to perform the installation process.

Driver-Specific Installer

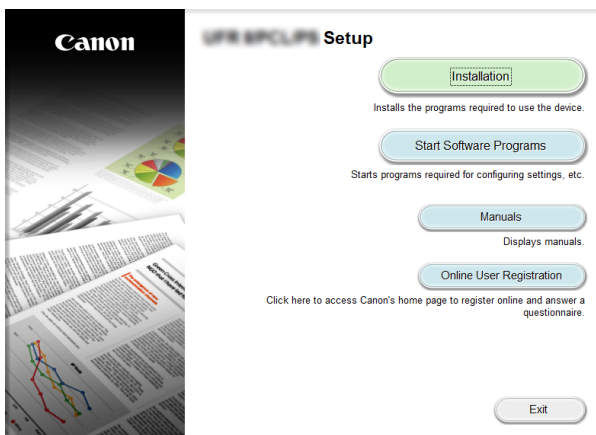
An installer provided for one driver. Installs a single driver.



- Obtained from : Supplied CD-ROM, or downloaded from the website indicated in the notice included with the device
- Executable name : [Setup.exe]

Integrated Installer

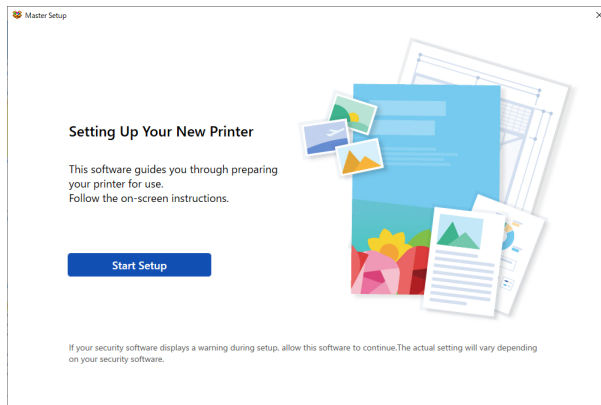
An installer that installs multiple drivers.



- Obtained from : Supplied CD-ROM
- Executable name : [MInst.exe]

Master Setup

An installer used for installing some target devices.



- Obtained from : Downloaded from the website indicated in the notice included with the device
- Executable name : [Msetup4.exe]

Installation Procedure

When using a driver-specific installer or integrated installer

- ▶ Installing by Discovering Devices on a Network(P. 24)
- ▶ Installing by Specifying a Port or IP Address(P. 30)
- ▶ Installing Using a USB Connection(P. 36)

When using Master Setup

- ▶ Installing a Driver Using Master Setup(P. 39)

Installing by Discovering Devices on a Network

You can search for devices on TCP/IP networks when installing the driver.



NOTE

- For network environments other than TCP/IP, refer to the procedure for installing by specifying a port or IP address.
- If you do not know the network environment you are using, check with your network administrator.

Prerequisites

- **System Requirements(P. 14)**
- The device is one that is on the same subnet as the computer you are using (for TCP/IP network environments)
- Enabling settings for both [Use WSD] and [Multicast Discovery Settings] at the device (for network environments that use WSD)
- Setting the page description language selection (plug and play) function of the device
Set [PDL Selection (Plug and Play)] at the device to match the driver you are using. For details about the setting method, refer to the manual of the device.
- The device must be in the same subnet as the computer you are using.
- **Notes and Warnings Regarding Installation(P. 18)**
- When starting the computer, log on as a user with administrator privileges.
- [Desktop] screen display (when using Windows 8.1/Server 2012/Server 2012 R2)

Procedures

1 Start the installer.

If you are using an installer downloaded from the web site

Double-click the downloaded file to decompress it. If the installer does not start automatically after it is decompressed, double-click [Setup.exe].

If you are using the accompanying CD-ROM

(1) Set the CD-ROM in the computer.

If the CD-ROM menu is not displayed, click the subsequent "Open details."

Start the installer by following the procedure below.

- If a message prompting you to insert a CD-ROM is displayed or if Windows Explorer is displayed: Execute [MInst.exe].
- If nothing is displayed: Double-click the CD-ROM icon.
- If the above [MInst.exe] does not exist: Execute [Setup.exe] in the driver folder of the CD-ROM.

If you executed [Setup.exe], proceed to step 2.

(2) If the language selection screen is displayed, select a language → click [OK].

(3) Click [Installation] from the menu screen.

(4) If the [Select the Type of Connection] screen is displayed, select [Network Connection] → click [Next].

(5) In the displayed screen, confirm that the driver(s) to be installed have been selected → click [Install].

(6) Confirm the content of the CANON SOFTWARE LICENSE AGREEMENT → click [Yes].

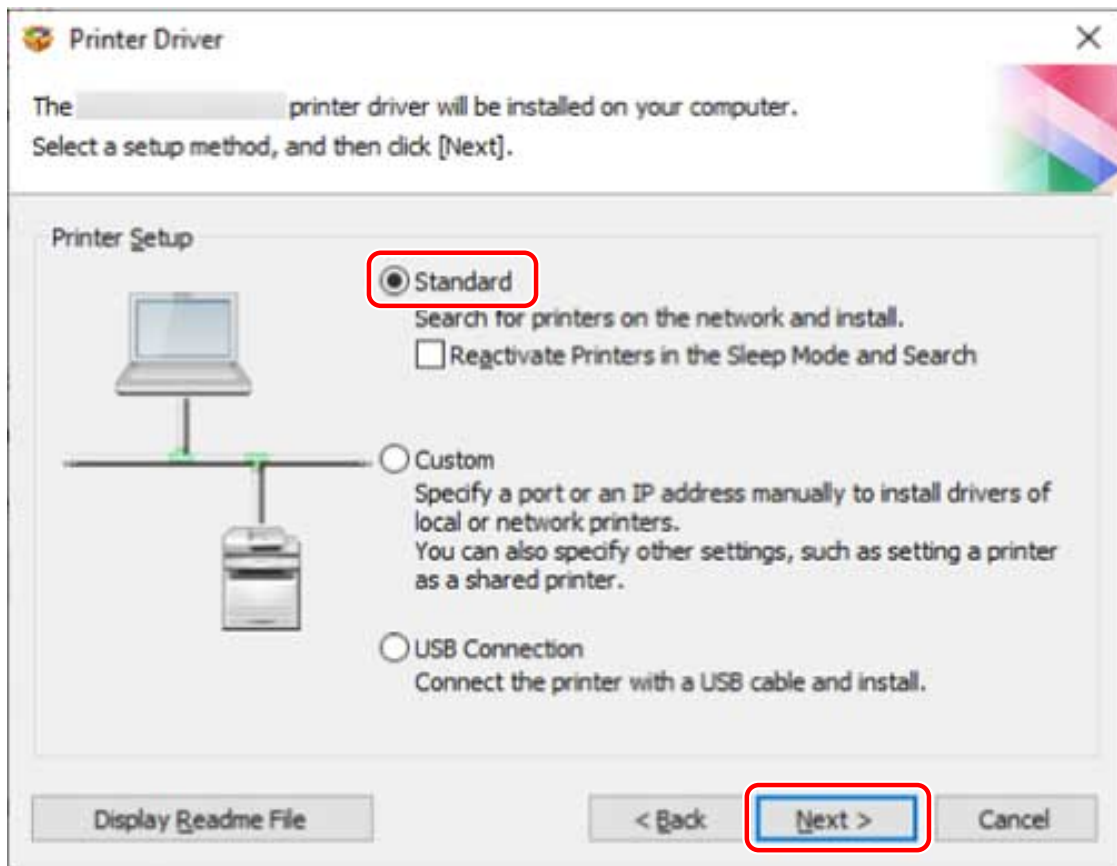
2 Select a language → click [Next].

3 When the CANON SOFTWARE LICENSE AGREEMENT is displayed, confirm the content → click [Yes].

4 Select [Standard] → click [Next].

[Reactivate Printers in the Sleep Mode and Search]: Select this when you want to detect devices on the network that are in sleep mode.

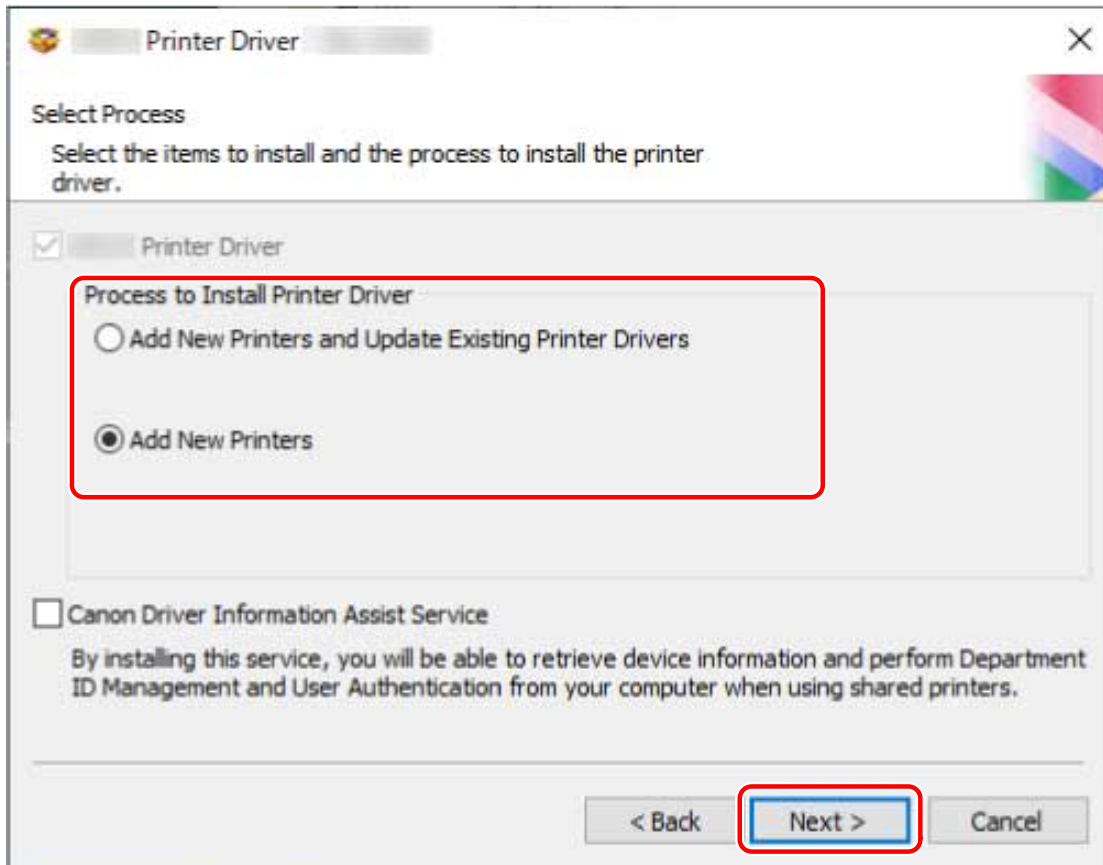
[Display Readme File]: Click this to refer to the Readme file.



5 Select the required items → click [Next].

[Process to Install Printer Driver]: Select this if necessary if a driver is already installed.

[Canon Driver Information Assist Service]: Select this when you want to use the device information retrieval function.



6 Select the device to install from [Printer List].

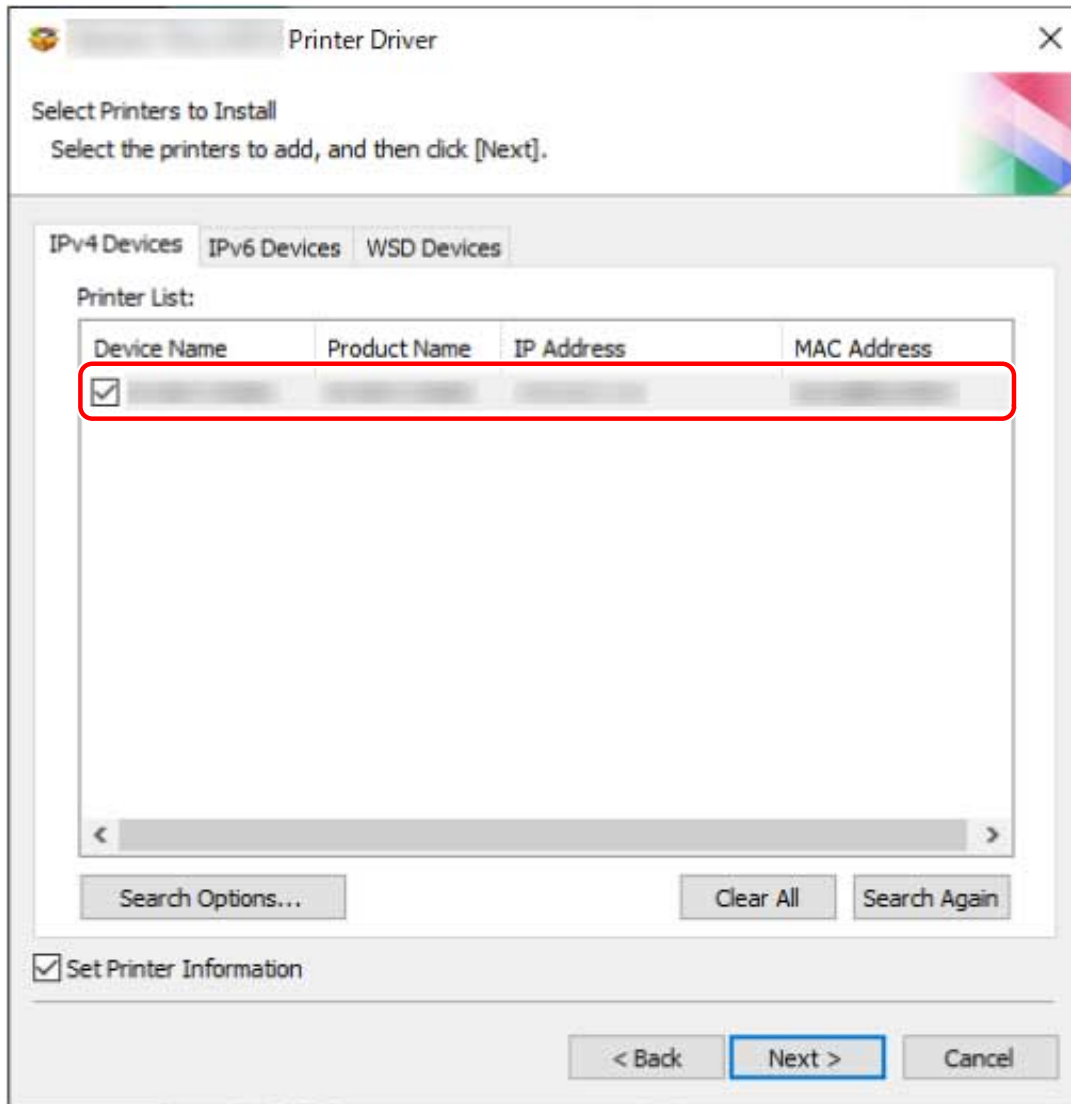
[IPv4 Devices]/[IPv6 Devices]/[WSD Devices] tab: The search results are displayed on the sheet corresponding to the connection method of the device. Click a sheet to switch to it.

[Search Options]: Change the time for searching for devices. This enables you to extend the time spent searching for devices when devices are not displayed in [Printer List].

You can enter the SNMP community name specified in the device to display the discovery results on the [IPv4 Devices]/[IPv6 Devices] sheet.

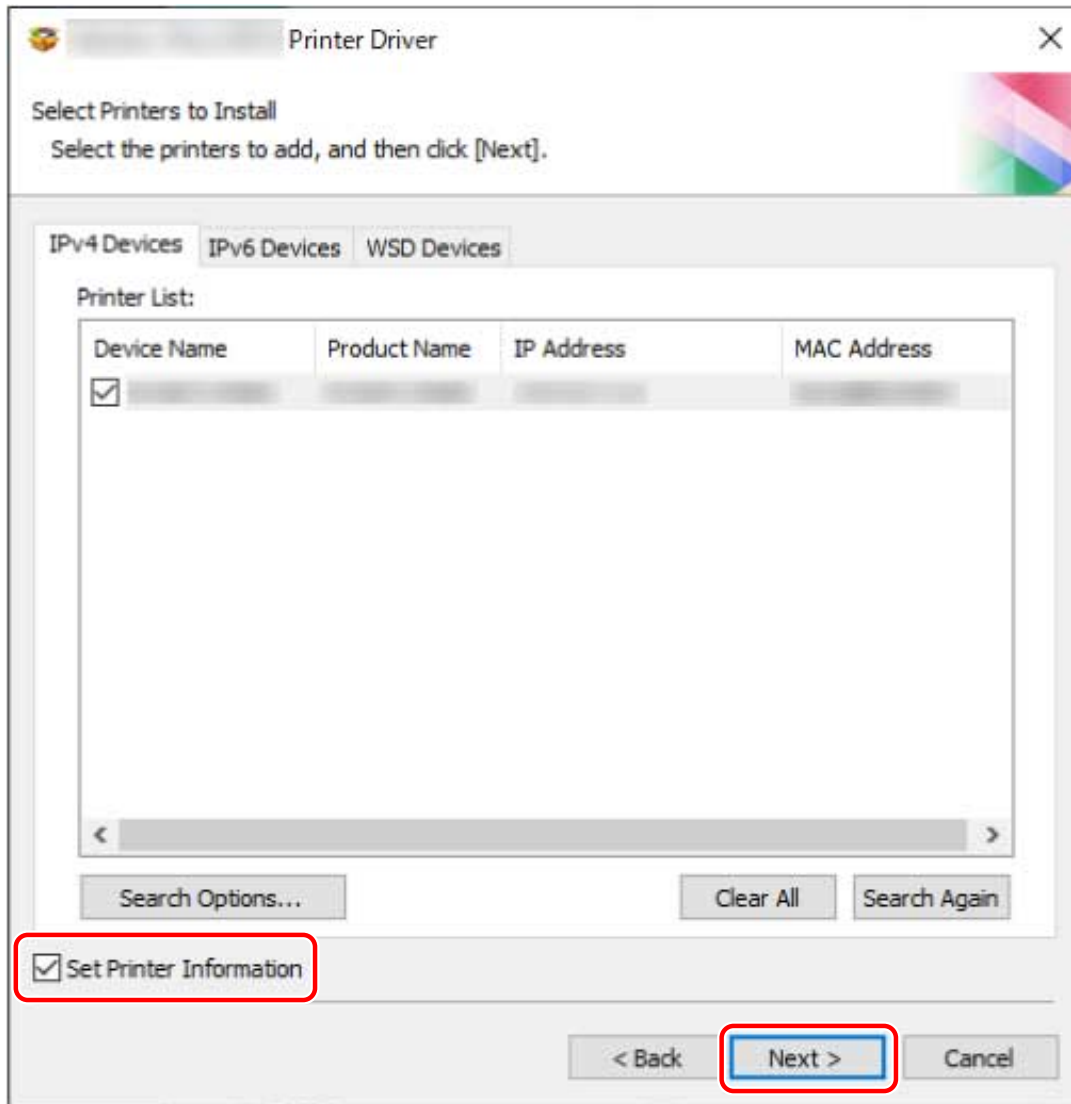
Set this when a name other than the default name "public" is specified in the device.

[Search Again]: Click this if the device is not displayed in [Printer List]. If the device is still not displayed after re-searching, select [Custom] and install by specifying a port or IP address.



7 If you want to change the name of the device, or set it as the default device, select [Set Printer Information] → click [Next].

If you do not want to change the name of the device or set it as the default device, click [Next] and proceed to step 9.(P. 29)



8 Change [Printer Name] if necessary → click [Next].

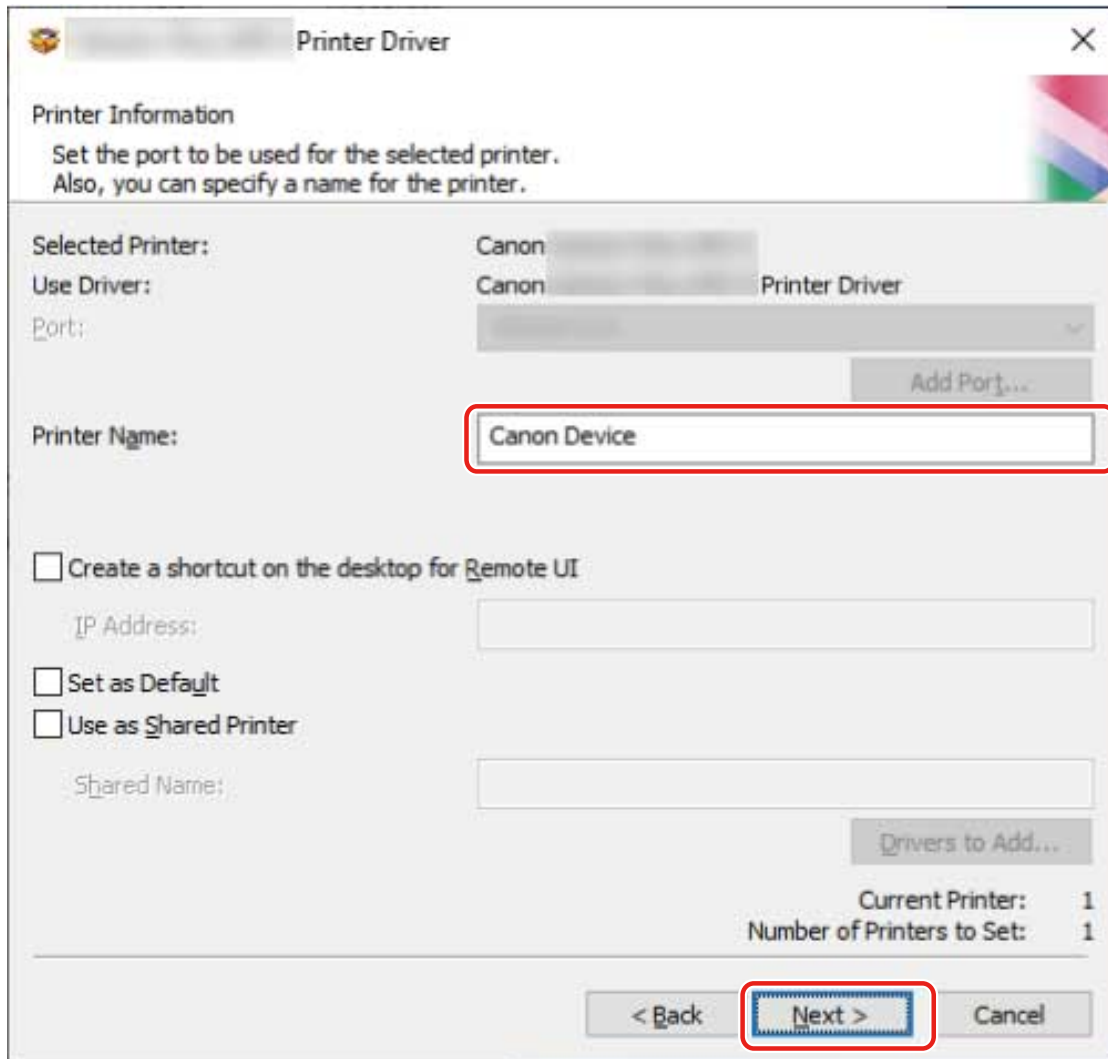
[Create a shortcut on the desktop for Remote UI]: Creates a shortcut to the Remote UI of the device on the desktop.

To update the IP address of the device set in the shortcut after installing the driver, or delete the shortcut, do so manually.

[Set as Default]: Select this to set the device as the device that is normally used.

[Use as Shared Printer]: Select this if you want to configure shared settings for the device.

You cannot select [Printer Name] if the device is connected via a WSD port.



9 Check [Printer List for Driver Installation] → click [Start].

Proceed with the installation according to the instructions on the screen.

10 Click [Restart] (or [Exit]).

Related Topics

- ▶ Installing by Specifying a Port or IP Address(P. 30)
- ▶ Configuring Share Print Server Settings(P. 54)
- ▶ Updating the Driver(P. 62)
- ▶ How to Refer to the Help(P. 77)

Installing by Specifying a Port or IP Address

This explains the procedure for manually specifying the port to use for a network connection or local connection and installing the driver. As well as existing ports, you can add a port.

Prerequisites

- **System Requirements(P. 14)**

- **Notes and Warnings Regarding Installation(P. 18)**

- Confirm the port to be specified

Specify a network connection port (standard TCP/IP port or WSD port) or local port. You can select a temporary port ([LPT1] etc.) and set it after installation is complete.

- Confirm the name and IP address of the device (if adding a standard TCP/IP port or WSD port).

If you are installing by adding a network connection port (standard TCP/IP port or WSD port), you need to enter the name (or host name) and IP address of the device. For the name of the device, use the name by which the device is known on the network. If you do not know the value to set, check with your network administrator.

- Confirm the queue specified for each port (if the target device is shown in the following).

If an optional external print server unit is attached to the target device, after selecting the port, you must specify the queue. Click "Open details," and confirm the queue corresponding to the selected port.

Specify the queues corresponding to the port.

For LPR:

For Windows TCP/IP, enter a Print, Hold, and Direct queue name in the [Queue Name] column.

For RAW:

The queue to be specified is determined by the port number.

9100: Print, Hold, or Direct

9101: Direct queue

9102: Print queue

9103: Hold queue

For SMB:

When you select the device from the network tree, three queues are displayed. Select one from among the displayed queues.

- When starting the computer, log on as a user with administrator privileges.
- [Desktop] screen display (when using Windows 8.1/Server 2012/Server 2012 R2)

Procedures

1 Start the installer.

If you are using an installer downloaded from the web site

Double-click the downloaded file to decompress it. If the installer does not start automatically after it is decompressed, double-click [Setup.exe].

If you are using the accompanying CD-ROM

(1) Set the CD-ROM in the computer.

If the CD-ROM menu is not displayed, click the subsequent "Open details."

Start the installer by following the procedure below.

- If a message prompting you to insert a CD-ROM is displayed or if Windows Explorer is displayed: Execute [MInst.exe].
- If nothing is displayed: Double-click the CD-ROM icon.
- If the above [MInst.exe] does not exist: Execute [Setup.exe] in the driver folder of the CD-ROM.

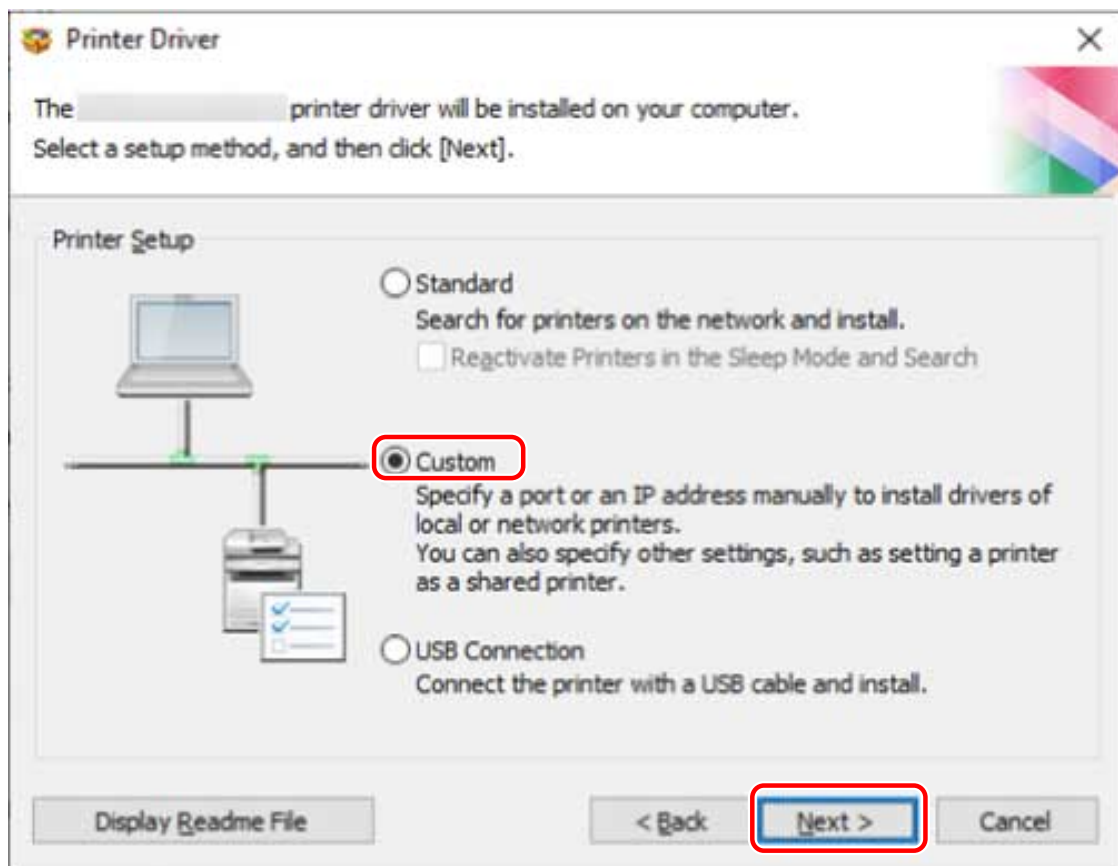
If you executed [Setup.exe], proceed to step 2.

- (2) If the language selection screen is displayed, select a language → click [OK].
- (3) Click [Installation] from the menu screen.
- (4) If the [Select the Type of Connection] screen is displayed, select [Network Connection] → click [Next].
- (5) In the displayed screen, confirm that the driver(s) to be installed have been selected → click [Install].
- (6) Confirm the content of the CANON SOFTWARE LICENSE AGREEMENT → click [Yes].

2 Select a language → click [Next].

3 When the CANON SOFTWARE LICENSE AGREEMENT is displayed, confirm the content → click [Yes].

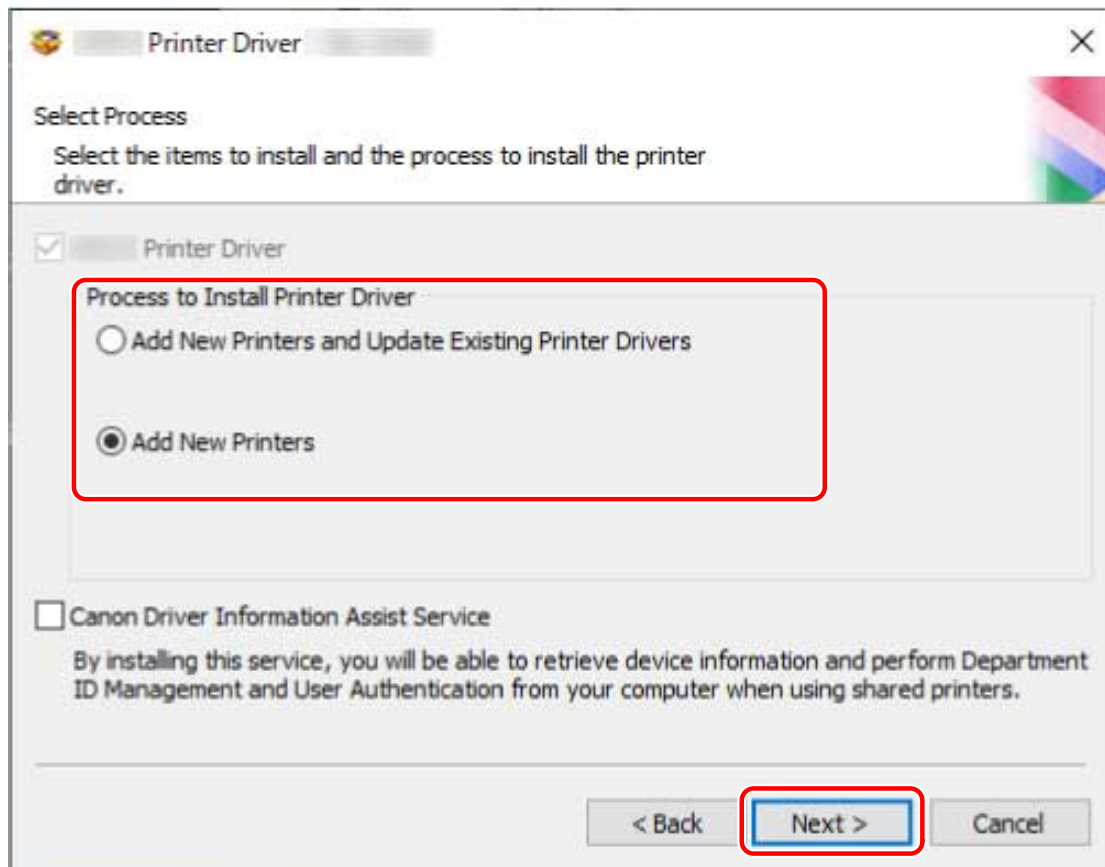
4 Select [Custom] → click [Next].



5 Select the required items → click [Next].

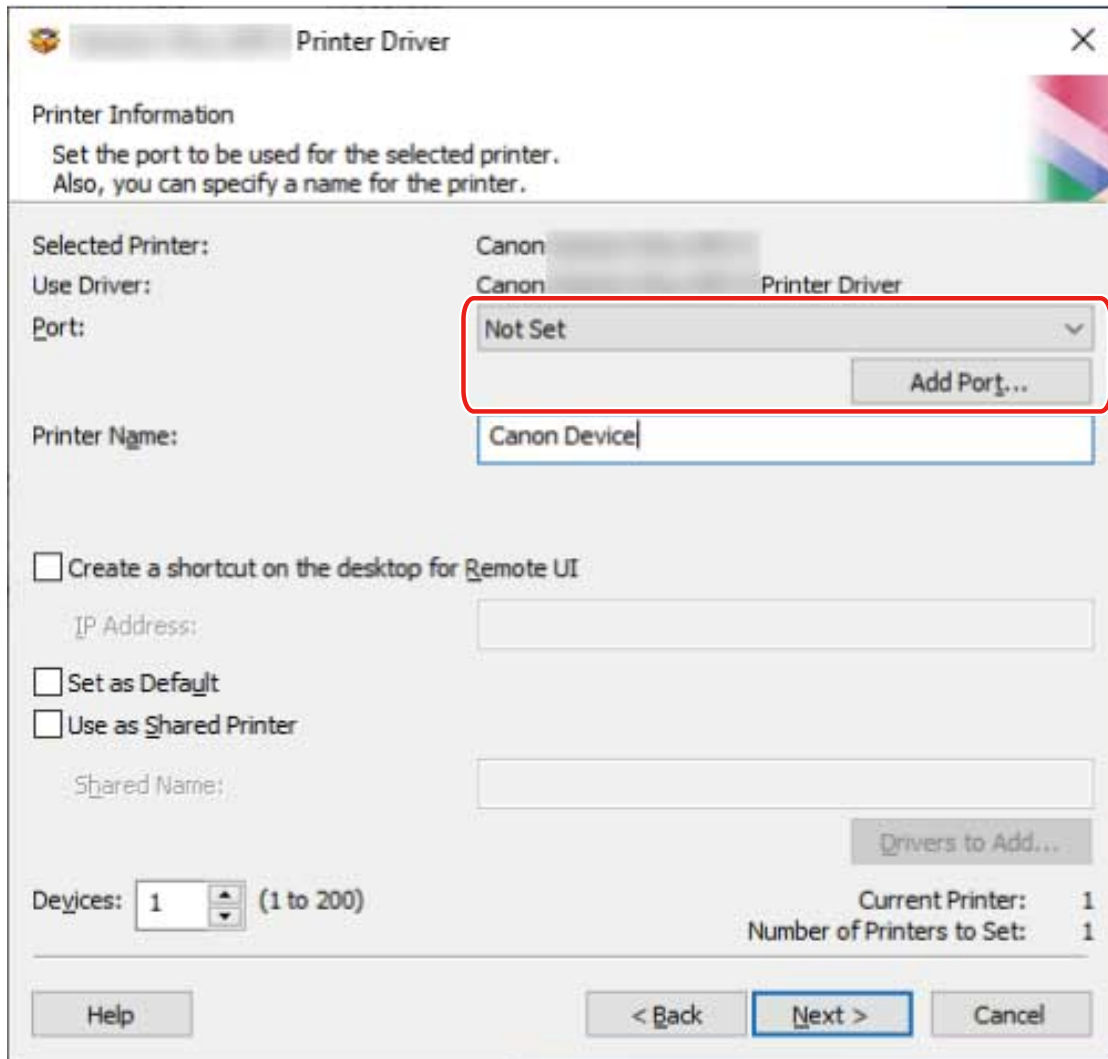
[Process to Install Printer Driver]: Select this if necessary if a driver is already installed.

[Canon Driver Information Assist Service]: Select this when you want to use the device information retrieval function.



6 Select the device to install from [Printer List] → click [Next].

7 Set the port.



When adding a port

(1) Click [Add Port] → select the type of port to add in [Port to Add] → click [OK].

You can add the following types of ports.

Standard TCP/IP / Local / WSD

(2) Follow the instructions in the displayed dialog box or wizard.

If you selected local port or WSD port, enter the value to set, then click [OK] and proceed to step 8.(P. 33) .

If you selected standard TCP/IP port, a wizard is displayed. Follow the instructions in the wizard and proceed to the next step.

(3) Enter the device name or IP address.

[Port Name] is automatically entered. Change the port name if required.

If the [Additional port information required] screen is displayed, click the subsequent "Open details" and perform the necessary operations.

Perform one of the following.

- Return to the previous screen in the wizard → re-enter the information for [Printer Name or IP Address] → click [Next].
- Select [Device Type] > [Standard] > [Canon Network Printing Device with P9100] → click [Next].

Depending on the device you are using, the name you select in [Device Type] > [Standard] may differ from [Canon Network Printing Device with P9100].

When using an existing port

Select a port from [Port].

8 Set [Printer Name] if necessary.

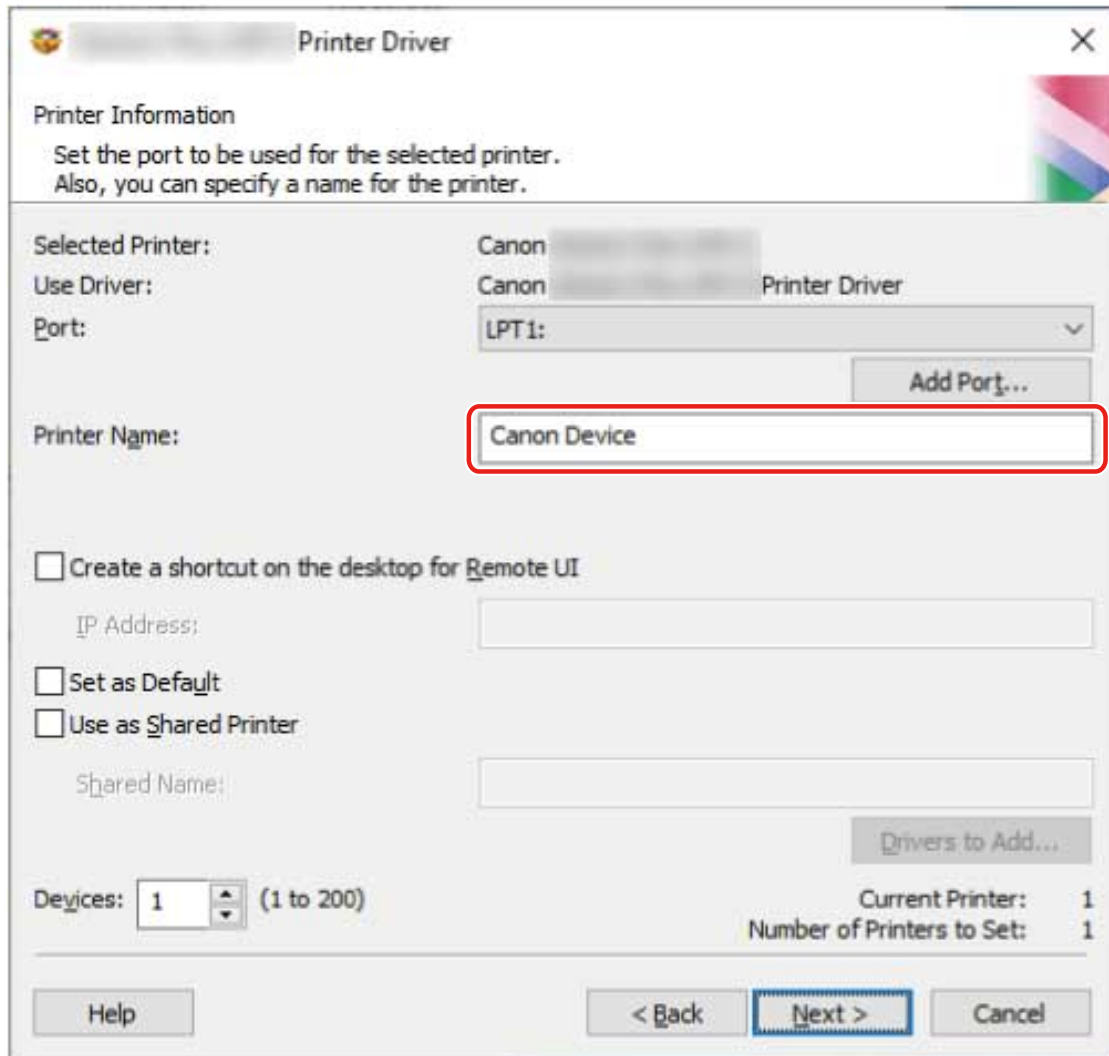
[Create a shortcut on the desktop for Remote UI]: Creates a shortcut to the Remote UI of the device on the desktop. Enter the IP address of the device in [IP Address].

To update the IP address of the device set in the shortcut after installing the driver, or delete the shortcut, do so manually.

[Set as Default]: Select this to set the device as the device that is normally used.

[Use as Shared Printer]: Select this if you want to configure shared settings for the device.

If you selected a network printer port, you cannot set [Printer Name] and [Use as Shared Printer].



9 If necessary, change the number of devices to be installed in [Devices] → click [Next].

When you click [Next], the change to [Devices] is applied to [Current Printer] and [Number of Printers to Set].

[Current Printer] shows which number device is currently being set.

Printer Driver

Printer Information
Set the port to be used for the selected printer.
Also, you can specify a name for the printer.

Selected Printer: Canon
Use Driver: Canon Printer Driver
Port: LPT1:
Printer Name: Canon Device

Create a shortcut on the desktop for Remote UI
IP Address:
 Set as Default
 Use as Shared Printer
Shared Name:

Devices: 1 (1 to 200)
Current Printer: 1
Number of Printers to Set: 1

Help < Back Next > Cancel

If multiple devices were selected in step 6.(P. 32) , or multiple devices were specified in [Devices], the [Printer Information] screen is repeatedly displayed the number of times corresponding to [Number of Printers to Set]. Repeat steps 7.(P. 32) to 9.(P. 34) for each device.

10 Check [Printer List for Driver Installation] → click [Start].

Proceed with the installation according to the instructions on the screen.

11 Click [Restart] (or [Exit]).

Related Topics

- ▶ [Configuring Share Print Server Settings\(P. 54\)](#)
- ▶ [Changing to a Standard TCP/IP Port\(P. 49\)](#)
- ▶ [Updating the Driver\(P. 62\)](#)
- ▶ [How to Refer to the Help\(P. 77\)](#)

Installing Using a USB Connection

This explains the procedure for connecting a device and computer with a USB cable and installing a driver.



IMPORTANT

- If connected by USB, you may not be able to use the device information retrieval function, depending on the device and environment you are using.

Prerequisites

- **System Requirements(P. 14)**

- Installation of the optional USB interface board (if required with the device you are using)
- Page description language selection (plug & play) function setting of the device (if required with the device you are using)

Set [PDL Selection (Plug and Play)] at the device to match the driver you are using. For details about the setting method, refer to the manual of the device.

- **Notes and Warnings Regarding Installation(P. 18)**

- When starting the computer, log on as a user with administrator privileges.
- [Desktop] screen display (when using Windows 8.1/Server 2012/Server 2012 R2)

Procedures

1 Turn off the device.

2 Start the installer.

If you are using an installer downloaded from the web site

Double-click the downloaded file to decompress it. If the installer does not start automatically after it is decompressed, double-click [Setup.exe].

If you are using the accompanying CD-ROM

(1) Set the CD-ROM in the computer.

If the CD-ROM menu is not displayed, click the subsequent "Open details."

Start the installer by following the procedure below.

- If a message prompting you to insert a CD-ROM is displayed or if Windows Explorer is displayed: Execute [MInst.exe].
- If nothing is displayed: Double-click the CD-ROM icon.
- If the above [MInst.exe] does not exist: Execute [Setup.exe] in the driver folder of the CD-ROM.

If you executed [Setup.exe], proceed to step **3.(P. 37)**

(2) If the language selection screen is displayed, select a language → click [OK].

(3) Click [Installation] from the menu screen.

(4) If the [Select the Type of Connection] screen is displayed, select [USB Connection] → click [Next].

(5) In the displayed screen, confirm that the driver(s) to be installed have been selected → click [Install].

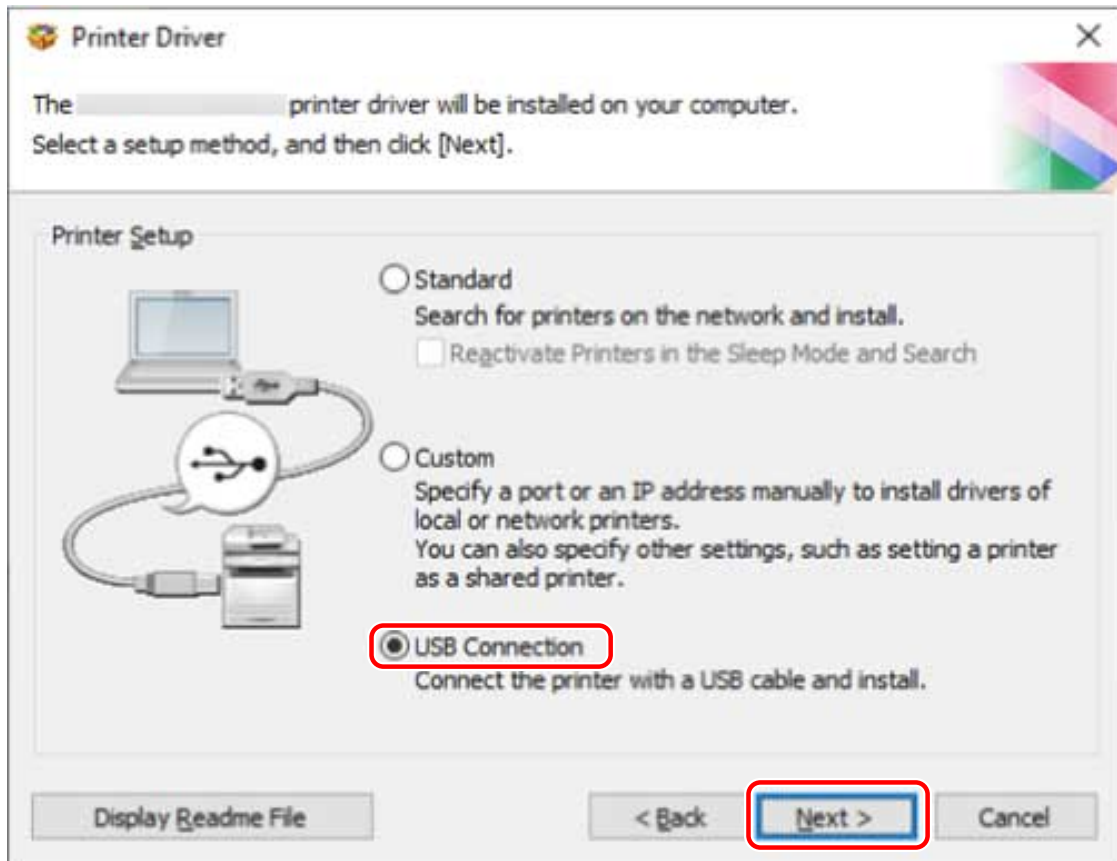
(6) Confirm the content of the CANON SOFTWARE LICENSE AGREEMENT → click [Yes].

3 Select a language → click [Next].

4 When the CANON SOFTWARE LICENSE AGREEMENT is displayed, confirm the content → click [Yes].

5 Select [USB Connection] → click [Next].

Proceed with the installation according to the instructions on the screen.



6 When the following screen appears, connect the device and computer with a USB cable → turn on the device.



Proceed with the installation according to the instructions on the screen.

If installation fails in the above screen, click the subsequent "Open details" and perform the necessary operations.

Reinstall the driver after performing the following procedure.

- (1) Connect the device and computer with a USB cable → turn on the device.
- (2) Display [Device Manager].

If displaying from [Windows logo] (the Start menu)

Right-click [Windows logo] → select [Device Manager] from the menu.

If displaying from [Control Panel]

Display [Hardware and Sound] (or [Hardware]/ [System and Maintenance]) > [Device Manager].

- (3) Right-click the target device in [Other devices] → select the menu for uninstalling the device.
- (4) Confirm the device name.
Canon + <model name being used>

7 Click [Restart] (or [Exit]).

Related Topics

- ◉ Automatically Setting the Device Information Retrieval Function(P. 56)
- ◉ How to Refer to the Help(P. 77)

Installing a Driver Using Master Setup

Master Setup can install the driver for a device without worrying about the connection environment of the target device (whether the device uses a network connection or USB connection).

Install the driver by following the instructions on the screen.



NOTE

- Master Setup does not support the following functions. Use an installer other than Master Setup if these functions are required.
 - Discovery of devices connected via IPv6
 - Identification of multiple devices of the same model connected via USB
 - Shared printer settings
 - Installation of alternate drivers

Prerequisites

- The environment is connected to the Internet
- **System Requirements(P. 14)**
Installation using Master Setup is only supported with Windows 10/11.
- Page description language selection (Plug & Play) function setting of the device (if required with the device you are using)
Set [PDL Selection (Plug and Play)] at the device to match the driver you are using. For details about the setting method, refer to the manual of the device.
- The device is one that is on the same subnet as the computer you are using (when discovering a device connected via a network)
- **Notes and Warnings Regarding Installation(P. 18)**
- When starting the computer, log on as a user with administrator privileges.

Procedures

1 Start the installer.

Extract the downloaded file, and double-click [Msetup4.exe].

If the combination of selected language and region is not supported by the driver, the driver is installed in the language set for Windows.

2 Proceed with the installation according to the instructions on the screen.

3 Click [Finish], [Restart Now], or [Later].

A shortcut to the online manual is created on your desktop.

If device information cannot be acquired during installation, set the device information before printing.

For details about how to set the device information, refer to the driver help.

Related Topics

- ▶ [How to Refer to the Help\(P. 77\)](#)

Installation Without Using the Installer

Installation Without Using the Installer	42
Installing by Specifying an inf File	43
Installing Using a WSD Port	45

Installation Without Using the Installer

This explains the procedure for installing the driver without using the usual installer.

- ▶ **Installing by Specifying an inf File(P. 43)**
- ▶ **Installing Using a WSD Port(P. 45)**

Installing by Specifying an inf File

You can install a driver by specifying an inf file with the add printer function of Windows. The following explanation will be given with respect to installation with a standard TCP/IP port.

Prerequisites

- When starting the computer, log on as a user with administrator privileges.
- Confirm the IP address of the device.
- Prepare the inf file.
Acquire the driver from the Canon web site (<https://global.canon/>) or the supplied CD-ROM, and prepare the inf file.
- The inf file is stored in the [Driver] folder in the folder of the driver you have acquired.
- [Desktop] screen display (when using Windows 8.1/Server 2012/Server 2012 R2)

Procedures

1 Start the Windows add printer wizard.

If starting from [ Settings] in the Start menu

- (1) Display [Bluetooth & devices] (or [Devices]).
- (2) In [Printers & scanners], click [Add a printer or scanner] > [Add device] (or [Add a printer or scanner]).
- (3) Click [The printer that I want isn't listed] > [Add a new device manually] (or [The printer that I want isn't listed]).

If starting from [Control Panel]

- (1) Display [Devices and Printers] → click [Add a printer].
- (2) When the screen for selecting a device is displayed, click the link indicating that the printer is not in the list.

2 Select local printer addition and proceed to the next screen.

3 Select [Create a new port] → select [Standard TCP/IP Port] from [Type of port] → click [Next].

4 Enter the IP address of the device in [Hostname or IP address] → proceed according to the instructions on the screen.

If the device cannot be found, it may be recognized as an unknown device. If so, click the subsequent "Open details."

- (1) Display [Device Manager].

If displaying from [ (the Start menu)]

Right-click [] → select [Device Manager] from the menu.

If displaying from [Control Panel]

Display [Hardware and Sound] (or [Hardware]/[System and Maintenance]) > [Device Manager].

(2) Select and right-click [Other devices] > [Unknown device] → select the menu for updating the driver.

(3) In the driver software update wizard, click [Browse my computer for drivers] → click [Let me pick from a list of available drivers on my computer].

(4) Select [Printers] from [Common hardware types] → click [Next].

5 In the [Add a printer] screen, click [Have Disk].

6 Click [Browse] → select the prepared inf file.

7 Select the device to use from [Printers] → click [Next].

8 Install the driver according to the instructions on the screen → click [Finish].

Related Topics

- ▶ [Notes and Warnings Regarding Installation\(P. 18\)](#)
- ▶ [Changing to a Standard TCP/IP Port\(P. 49\)](#)
- ▶ [How to Refer to the Help\(P. 77\)](#)

Installing Using a WSD Port


This explains the procedure for searching for devices on a network from Windows using a WSD (Web Services on Devices) port and installing the driver.

You cannot install multiple drivers in the computer you want to install a driver in using a WSD port. If you are installing a new driver, do so after first uninstalling the drivers. If you want to install multiple drivers, share a standard TCP/IP port.

Prerequisites

- Page Description Language selection (Plug & Play) function settings of the device
Set [PDL Selection (Plug and Play)] at the device to match the driver you are using. For details about the setting method, refer to the manual of the device.
- **Installing by Specifying a Port or IP Address(P. 30)**
Specify a temporary port ([LPT1] etc.) and install the driver.

Procedures

To install from [ Settings] in the Start menu

- 1 Display [Bluetooth & devices] (or [Devices]).**
- 2 In [Printers & scanners], click [Add a printer or scanner] > [Add device] (or [Add a printer or scanner]).**
- 3 Click [Add device] for the target device.**

To install from [Control Panel]

- 1 Display [Devices and Printers] → Click [Add a device].**
- 2 Select the target device → click [Next].**



NOTE

- If you install using a WSD port, you may not be able to retrieve device information, depending on the connected device.
- After installation using the WSD port is complete, the device added to the printer list of Windows during installation specifying the temporary port is unnecessary.

Select the device to be removed in the printer list of Windows, then select [Remove device] or click [Remove] on the management screen for the device.

Refer to the above procedure for how to display the printer list of Windows.

Related Topics

- ▶ **Notes and Warnings Regarding Installation(P. 18)**
- ▶ **How to Refer to the Help(P. 77)**
- ▶ **Cannot discover a device connected via a WSD port(P. 83)**

Settings Related to Installation

Settings Related to Installation	48
Changing to a Standard TCP/IP Port	49
Shared Printer Settings	53
Configuring Share Print Server Settings	54
Setting up Clients of a Shared Printer	55
Automatically Setting the Device Information Retrieval Function	56
Installing the PPD File	59

Settings Related to Installation

This explains procedures for changing the port being used by a device, configuring printer share settings, and setting the printer so that you can use the device information retrieval function.

Also, this explains the PPD file installation procedure when printing with a PS driver.

If you need to configure settings to match the environment you are using, refer to this chapter.

- ▶ **Changing to a Standard TCP/IP Port(P. 49)**
- ▶ **Shared Printer Settings(P. 53)**
- ▶ **Automatically Setting the Device Information Retrieval Function(P. 56)**
- ▶ **Installing the PPD File(P. 59)**

Changing to a Standard TCP/IP Port

This explains the procedure for changing the port used by a device connected by a network to a standard TCP/IP port. If you temporarily set a port for the device when installing the driver, you can change it to the correct port by following this procedure.

Prerequisites

- **Installing by Specifying a Port or IP Address(P. 30)**
Specify a temporary port ([LPT1] etc.) and install the driver with [Custom].
- Confirm the device name and IP address
You must enter the device name and IP address when adding a standard TCP/IP port. For the name of the device, use the name by which the device is known on the network. If you do not know the device name or IP address, check with your network administrator.
- Determining to protocol to use
LPR: The protocol commonly used by TCP/IP.
Raw: A protocol that can be used with Windows. It transmits data at a higher speed than LPR.
- When starting the computer, log on as a user with administrator privileges.

Procedures

1 Display the printer properties screen.

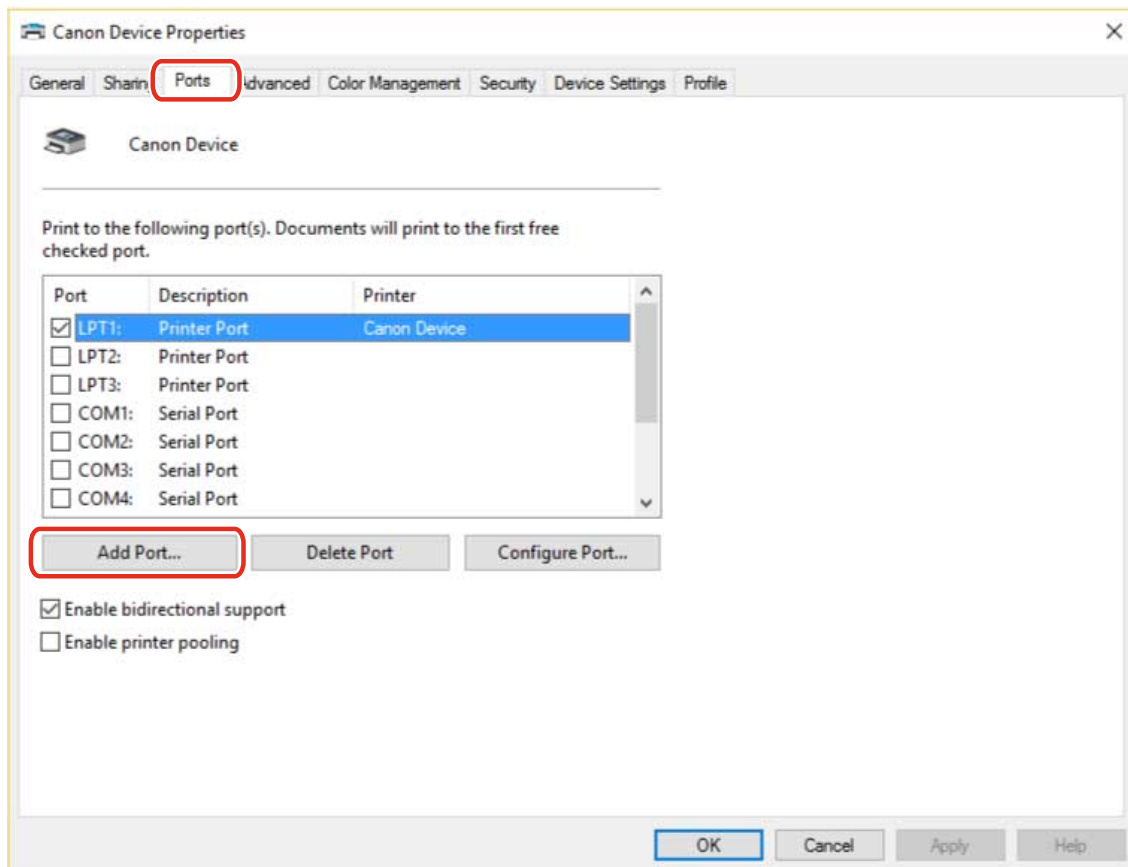
If displaying from [ Settings] in the Start menu

- (1) Display [Bluetooth & devices] (or [Devices]).
- (2) In [Printers & scanners], display the management screen for the device to set.
To display the management screen, click the device or click [Manage] for the corresponding device.
- (3) Click [Printer properties] for the device to set.

If displaying from [Control Panel]

- (1) Display [Devices and Printers].
- (2) From the printer list, right-click the device to be set → select [Printer properties] from the displayed menu.

2 Click the [Ports] tab → [Add Port].



3 In the [Printer Ports] dialog box, select [Standard TCP/IP Port] from [Available port types] → click [New Port].

4 Enter the device name or IP address according to the instructions of the wizard.

[Port Name] is automatically entered. Change the port name if required.

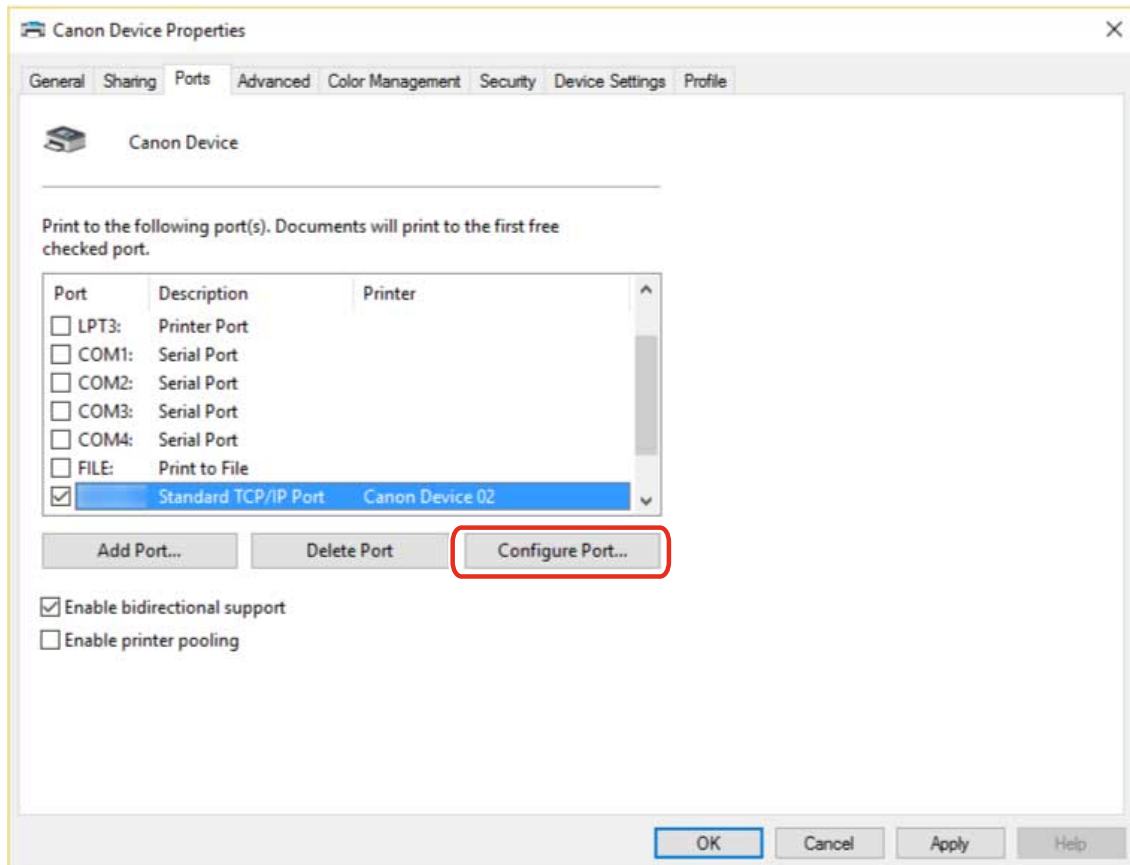
NOTE

- If the [Additional Port Information Required] or [Additional port information required] screen is displayed, perform one of the following procedures.
 - Return to the previous screen in the wizard → re-enter the information in [Printer Name or IP Address] → click [Next].
 - Select [Standard] for [Device Type] → select [Canon Network Printing Device with P9100] → click [Next]. Depending on the device you are using, the type of device that you can select in the [Additional Port Information Required] or [Additional port information required] screen > [Device Type] > [Standard] may vary.

5 Click [Finish].

6 In the [Printer Ports] dialog box, click [Close].

7 Click [Configure Port].



8 Set the port.

When using LPR:

(1) Select [LPR] for [Protocol] → specify one of the print queues for [Queue Name] in [LPR Settings].

LP: Outputs according to the spool setting of the device. This is the setting that is normally used.

SPOOL: Always outputs after spooling to the hard disk, regardless of the device settings.

DIRECT: Always outputs without spooling to the hard disk, regardless of the device settings.

(2) Click [OK].

The image shows a dialog box titled "Configure Standard TCP/IP Port Monitor". It has a close button (X) in the top right corner. The dialog is divided into several sections:

- Port Settings:** Contains two text input fields: "Port Name:" and "Printer Name or IP Address:". Both fields contain placeholder text.
- Protocol:** Contains two radio buttons: "Raw" and "LPR". The "LPR" radio button is selected and circled in red.
- Raw Settings:** Contains a "Port Number:" field with the value "9100".
- LPR Settings:** This section is circled in red and contains a "Queue Name:" text input field.
- Options:** Contains two checkboxes: "LPR Byte Counting Enabled" and "SNMP Status Enabled", both of which are unchecked.
- SNMP Settings:** Contains two text input fields: "Community Name:" with the value "public" and "SNMP Device Index:" with the value "0".
- Buttons:** At the bottom right, there are two buttons: "OK" (circled in red) and "Cancel".

When using Raw:

(1) Select [Raw] for [Protocol] → click [OK].

9 Click [Close].

Shared Printer Settings

This explains the setting procedure for sharing a printer with computers on the same network.

You can set a computer connected to a device as a print server, and set computers on the same network as clients.

- ▶ **Configuring Share Print Server Settings(P. 54)**
- ▶ **Setting up Clients of a Shared Printer(P. 55)**

Configuring Share Print Server Settings

This explains the procedure for setting a computer connected to a device as a print server. To use it as a print server, install Canon Driver Information Assist Service and configure the printer share settings.

Also, when computers on the same network as the print server (clients) are connected to the print server, you can set them to automatically download an alternate driver from the print server. An alternate driver is a driver that enables clients with different operating systems to the print server to use the shared printer.

Prerequisites

- When starting the computer, log on as a user with administrator privileges.

Procedures

- 1 Start the installer** → proceed according to the instructions on the screen.
- 2 Select [Standard] or [Custom]** → click [Next].
- 3 Select the Canon Driver Information Assist Service check box** → click [Next].
- 4 Select [Set Printer Information] in the [Select Printers to Install] screen** → click [Next].
- 5 Select [Use as Shared Printer]** → change [Shared Name] if necessary → click [Next].

[Drivers to Add]: Click this if you want to set the driver to be able to download alternate drivers to clients.
- 6 Follow the instructions on the screen** → click [Restart] or [Exit].

Related Topics

- ▶ [Installing by Discovering Devices on a Network\(P. 24\)](#)
- ▶ [Installing by Specifying a Port or IP Address\(P. 30\)](#)
- ▶ [Setting up Clients of a Shared Printer\(P. 55\)](#)

Setting up Clients of a Shared Printer

This explains the procedure for installing a driver that supports shared printers in order to set up, as clients, computers on the same network as the print server.

Prerequisites

- **Configuring Share Print Server Settings(P. 54)**

If the types of operating systems on the print server and clients differ, install the drivers for operating systems supported by the clients on the print server.

To enable device information on the print server to be retrieved when creating a shared printer, enable the following function in the driver on the print server side.

[Device Settings] sheet > [Details] > [Retrieve Device Information When Creating Shared Printer]

- When starting the computer, log on as a user with administrator privileges.

Procedures

- 1 Display [Network] in Windows Explorer.**
- 2 Select and double-click the computer (print server) you have set for print sharing.**
- 3 Double-click the icon of the device for installation.**
- 4 Click [Yes] in the displayed message.**
- 5 Set according to the instructions in the wizard.**
- 6 Restart the computer after installation is complete.**



NOTE

- Make sure that the drivers installed in the clients are always in the newest state to match updates to the driver installed in the print server. If the driver version in the clients is older than that in the print server, the server driver settings will not be reflected in the clients.

Related Topics

- ▶ **Configuring Share Print Server Settings(P. 54)**
- ▶ **Updating the Driver(P. 62)**

Automatically Setting the Device Information Retrieval Function

This explains the procedure for installing Canon Driver Information Assist Service for automatically setting the device information retrieval function. To enable use of the device information retrieval function after the driver has been installed, follow this procedure.

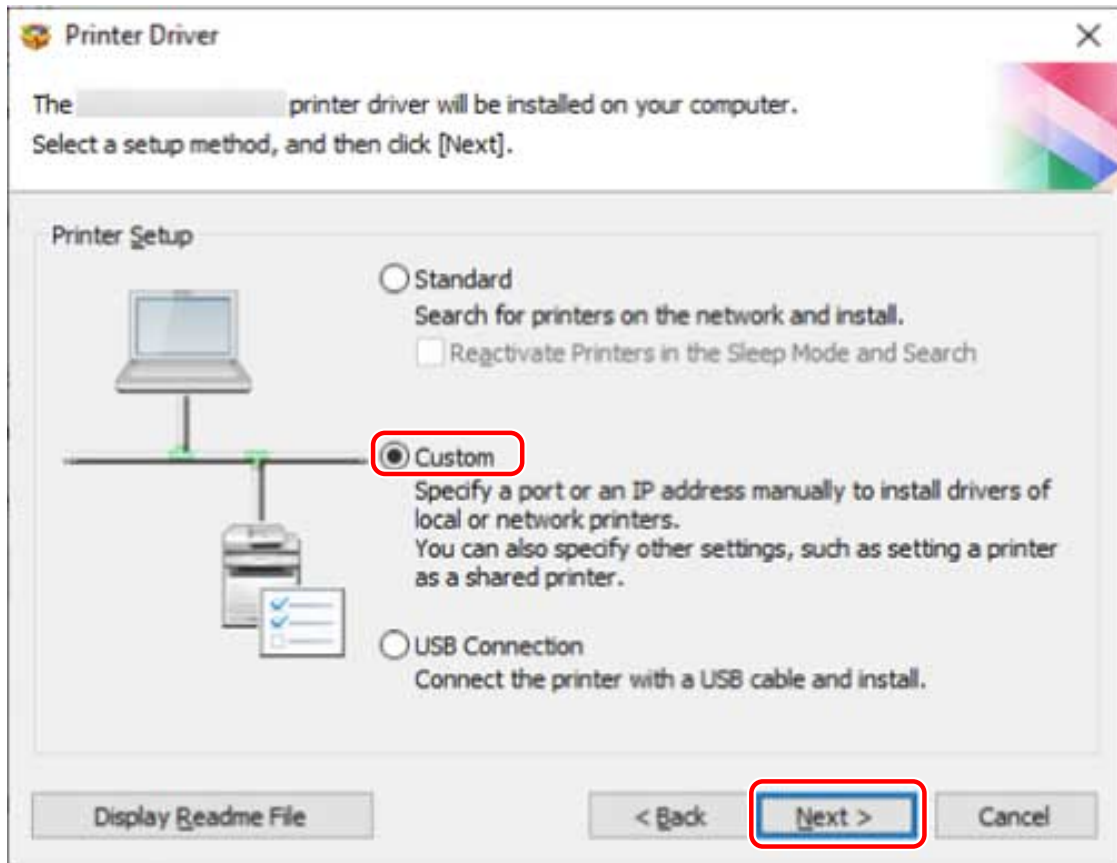
Prerequisites

- Driver Installation
- **System Requirements(P. 14)**
- **Services Required for Using the Device Information Retrieval Function(P. 16)**

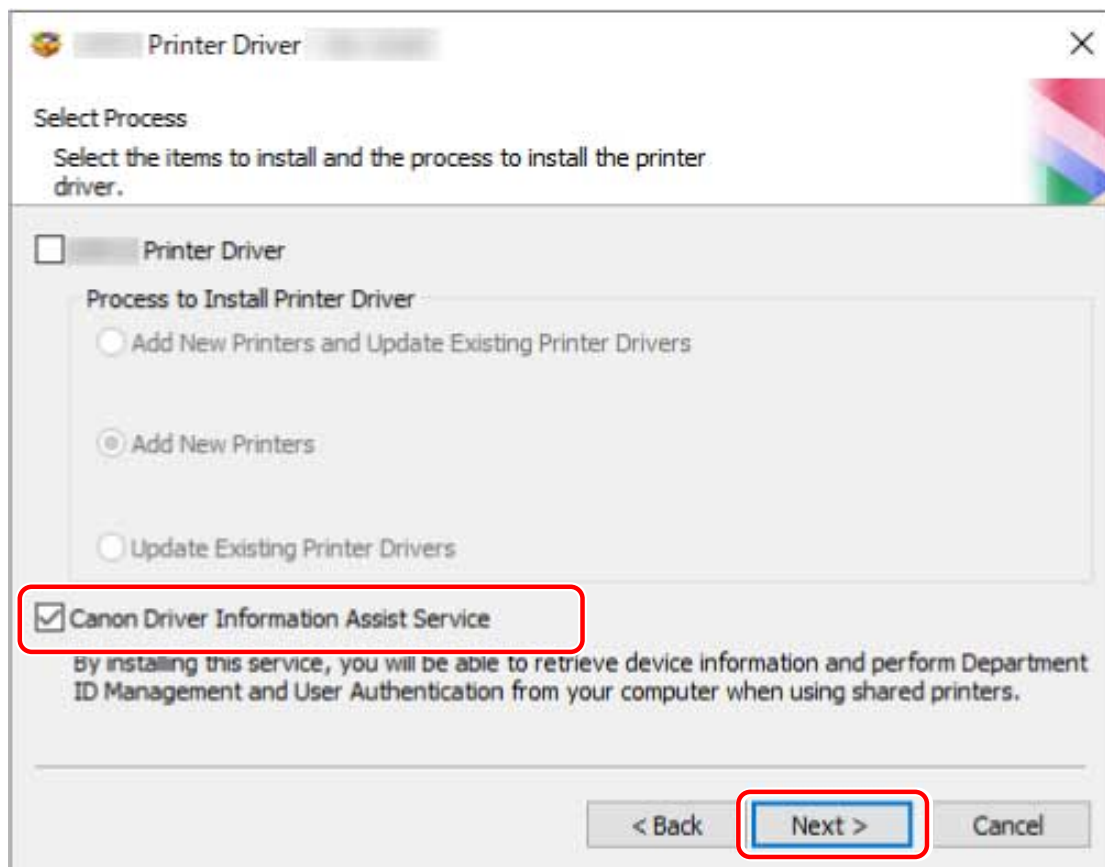
Whether you need to install the Canon Driver Information Assist Service and what should be installed in order to use the device information retrieval function differs depending on type of printer queue, connection method of the device, and server environment. Install the Canon Driver Information Assist Service after verifying the environment of the device you are using.
- When starting the computer, log on as a user with administrator privileges.

Procedures

- 1 Start the installer → proceed according to the instructions on the screen.**
- 2 Select [Custom] → click [Next].**



- 3** Cancel driver selection → select [Canon Driver Information Assist Service] → click [Next].



Proceed with the installation according to the instructions on the screen.

4 Click [Restart] (or [Exit]).

Related Topics

▶ [Installing by Specifying a Port or IP Address\(P. 30\)](#)

Installing the PPD File

This explains the procedure for installing the PPD file (Printer Description Language file).

If you print with the PS driver from an application according to this operation, you can use the functions specific to the printer. To install the PPD file, you need to copy it to the specified location.

Procedures

- 1 Double-click the folder with the name as the device you are using in the PS_PPD folder of the CD-ROM.**
- 2 Copy the PPD file from the folder of the application you are using.**

[PM]: PageMaker 6.53 or later, other than QuarkXPress

[QX]: QuarkXPress 4.x

For the PPD file copy destination, refer to the manual of each application.

Updating Installation and Uninstallation

Updating Installation and Uninstallation	61
Updating the Driver	62
Uninstalling the Driver	65

Updating Installation and Uninstallation

This explains the procedures for updating the driver to a new version and the procedure for uninstalling a driver that is no longer needed.

- ▶ **Updating the Driver(P. 62)**
- ▶ **Uninstalling the Driver(P. 65)**

Updating the Driver

This explains the procedure for updating an installed driver to a new version.

You can also update alternate drivers installed in the clients of a print server. However, if you use a driver updated on the print server from a client, uninstall the driver you are using and reinstall.

Prerequisites

- Driver Installation
- Acquire the installer
You can download the update installer from the Canon web site (<https://global.canon/>).
- When starting the computer, log on as a user with administrator privileges.
- [Desktop] screen display (when using Windows 8.1/Server 2012/Server 2012 R2)

Procedures

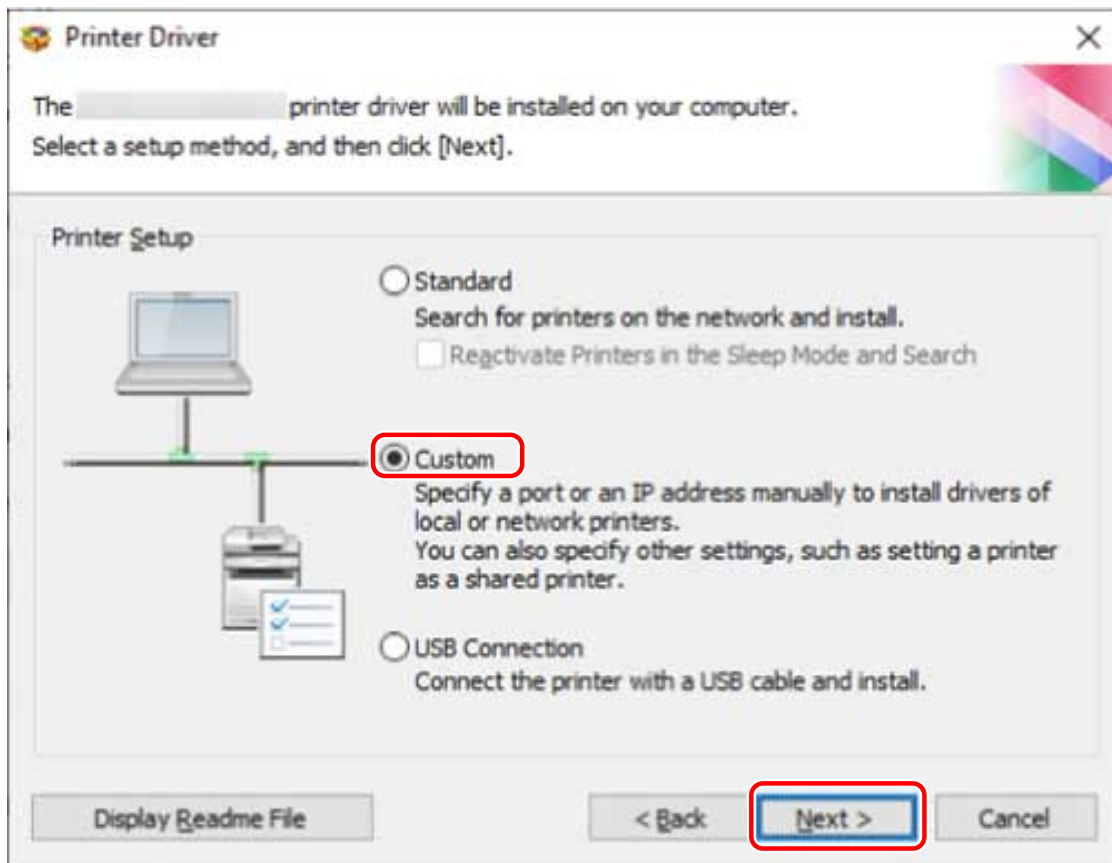
1 Start the installer.

Double-click the downloaded file to decompress it. If the installer does not start automatically after it is decompressed, double-click [Setup.exe].

2 Select a language → click [Next].

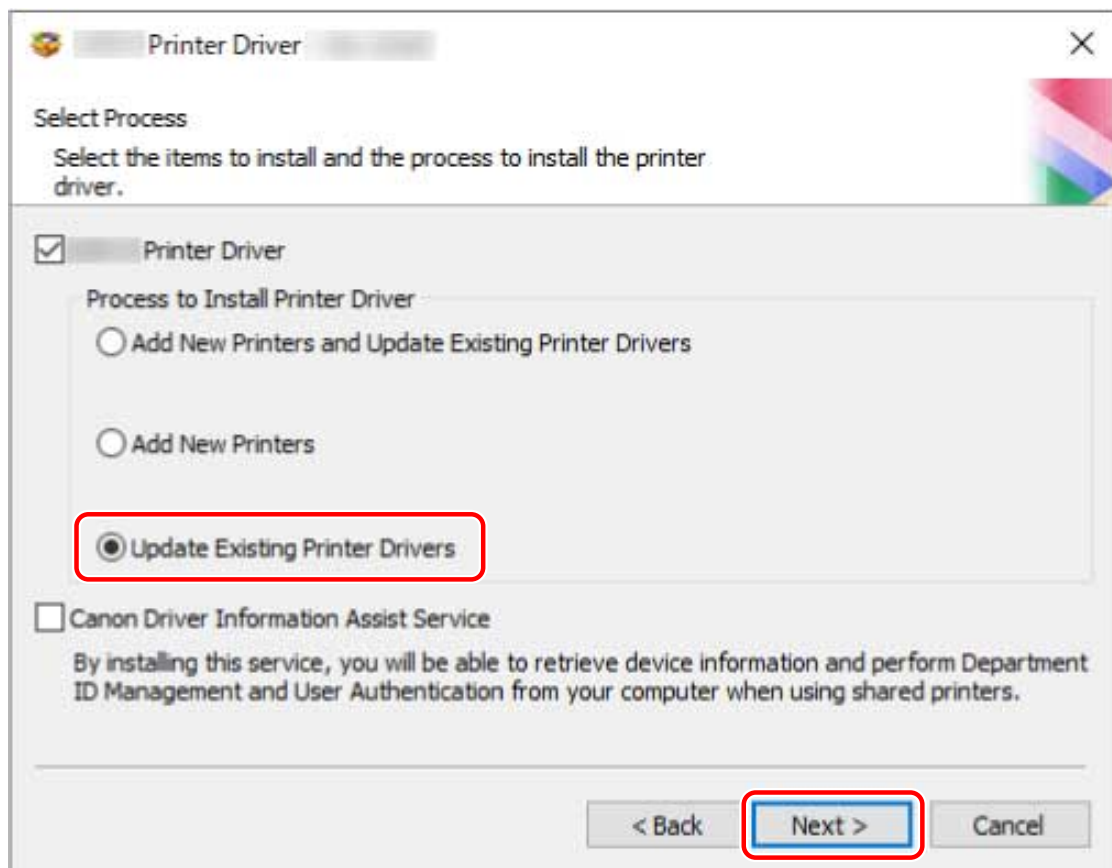
3 Read the license agreement → click [Yes].

4 Select [Custom] → click [Next] in the displayed message.



5 Select [Update Existing Printer Drivers] for [Process to Install Printer Driver] → click [Next].

[Canon Driver Information Assist Service]: Select this when you want to use the device information retrieval function.



6 Check [Printer List for Driver Installation] → click [Start].

7 Click [Exit].

Restart your computer when a message is displayed prompting you to do so.



NOTE

- If you use the installer to install a driver, you can update existing drivers at the same time that you install the new driver.

Related Topics

- ▶ [Installing by Discovering Devices on a Network\(P. 24\)](#)
- ▶ [Installing by Specifying a Port or IP Address\(P. 30\)](#)
- ▶ [Installing Using a USB Connection\(P. 36\)](#)
- ▶ [Configuring Share Print Server Settings\(P. 54\)](#)
- ▶ [Setting up Clients of a Shared Printer\(P. 55\)](#)

Uninstalling the Driver

This explains the procedure for uninstalling a driver.

There are two methods for uninstalling: starting the uninstaller from Windows, and using the uninstall file.

Prerequisites

- When starting the computer, log on as a user with administrator privileges.
- [Desktop] screen display (when using Windows 8.1/Server 2012/Server 2012 R2)

Procedures

1 Start the uninstaller of the driver.

- **When using Windows functions**

If starting from [Settings] in the Start menu

- (1) Display [Apps] (or [System]) > [Installed apps] (or [Apps & features]).
- (2) Click [...] for the driver you want to uninstall (or select the driver) → click [Uninstall].

If starting from [Control Panel]

- (1) Display [Programs] > [Uninstall a program].
- (2) Select the driver you want to uninstall → select [Uninstall/Change] from the menu.

- **When using the uninstall file provided with the driver**

Double-click one of the following files.

When using a file in an installed driver folder

Use [UNINSTAL.exe] corresponding to the driver in the following folder.

<install folder>\Canon\PrnUninstall

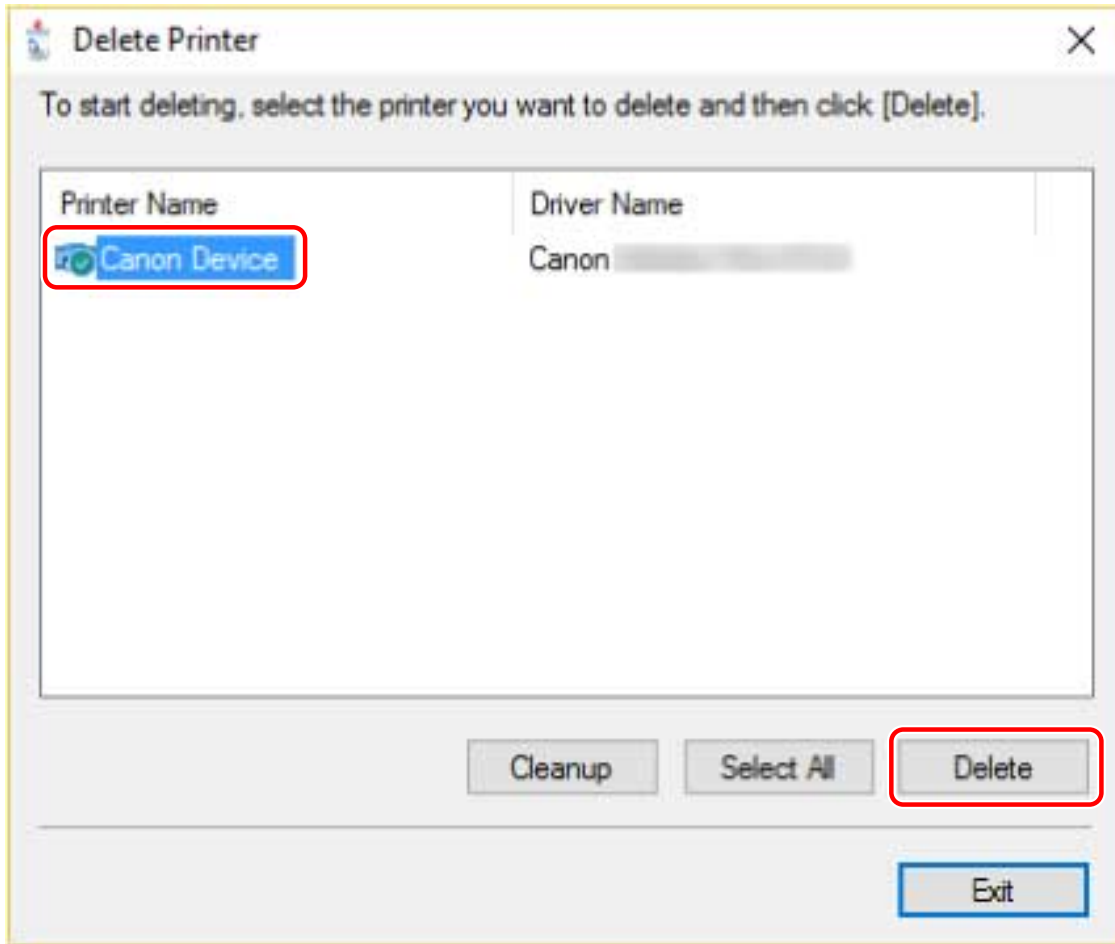
When using the file in the accompanying CD-ROM or downloaded driver folder

Use the following file in the folder of the driver you have acquired.

misc\UNINSTAL.exe

2 Select the name of the device you want to uninstall → click [Delete].

[Cleanup]: Click this to simultaneously delete all files and registry information relating to all of the drivers displayed in the list, not just the selected driver. Click [Delete] to perform a normal uninstallation of the driver.



3 In the screen for confirming whether to delete the printer, click [Yes].

4 In the [Delete Printer] screen, click [Exit].

Printing

Printing	68
Preparations Prior to Printing	69
Setting the Device Options in the Driver	70
Setting the Device Support Functions	72
Precautions to Be Taken When Printing	73
Printing from a Computer	74
Changing the Default Settings for Printing	76
How to Refer to the Help	77

Printing

This explains the preparations you need to make before printing, the actual printing procedure, and how to refer to the help.

- ▶ **Preparations Prior to Printing(P. 69)**
- ▶ **Printing from a Computer(P. 74)**
- ▶ **Changing the Default Settings for Printing(P. 76)**
- ▶ **How to Refer to the Help(P. 77)**

Preparations Prior to Printing

This explains setting procedures for required items in preparation for printing and what precautions need to be taken when printing. Among the items that need to be set are device options and support functions.

- ▶ **Setting the Device Options in the Driver(P. 70)**
- ▶ **Setting the Device Support Functions(P. 72)**
- ▶ **Precautions to Be Taken When Printing(P. 73)**

Setting the Device Options in the Driver

This explains the procedure for setting options installed in the device and making functions exclusive to the device usable.

If the device information retrieval function is not automatically set, you need to manually set the options of the device according to this procedure.

With these settings, the driver can use the functions of the device and print correctly.

Prerequisites

- Driver Installation
- Settings at the device
 - If the device is connected via a WSD port, [Use WSD Browsing] is already set to on.
 - If the device is connected by specifying a standard TCP/IP port, [Retrieve Printer Mngt. Information from Host] is already set to on.

For details, refer to the manual of the device.
- When starting the computer, log on as a user with administrator privileges.

Procedures

1 Display the printer properties screen.

If displaying from [ Settings] in the Start menu

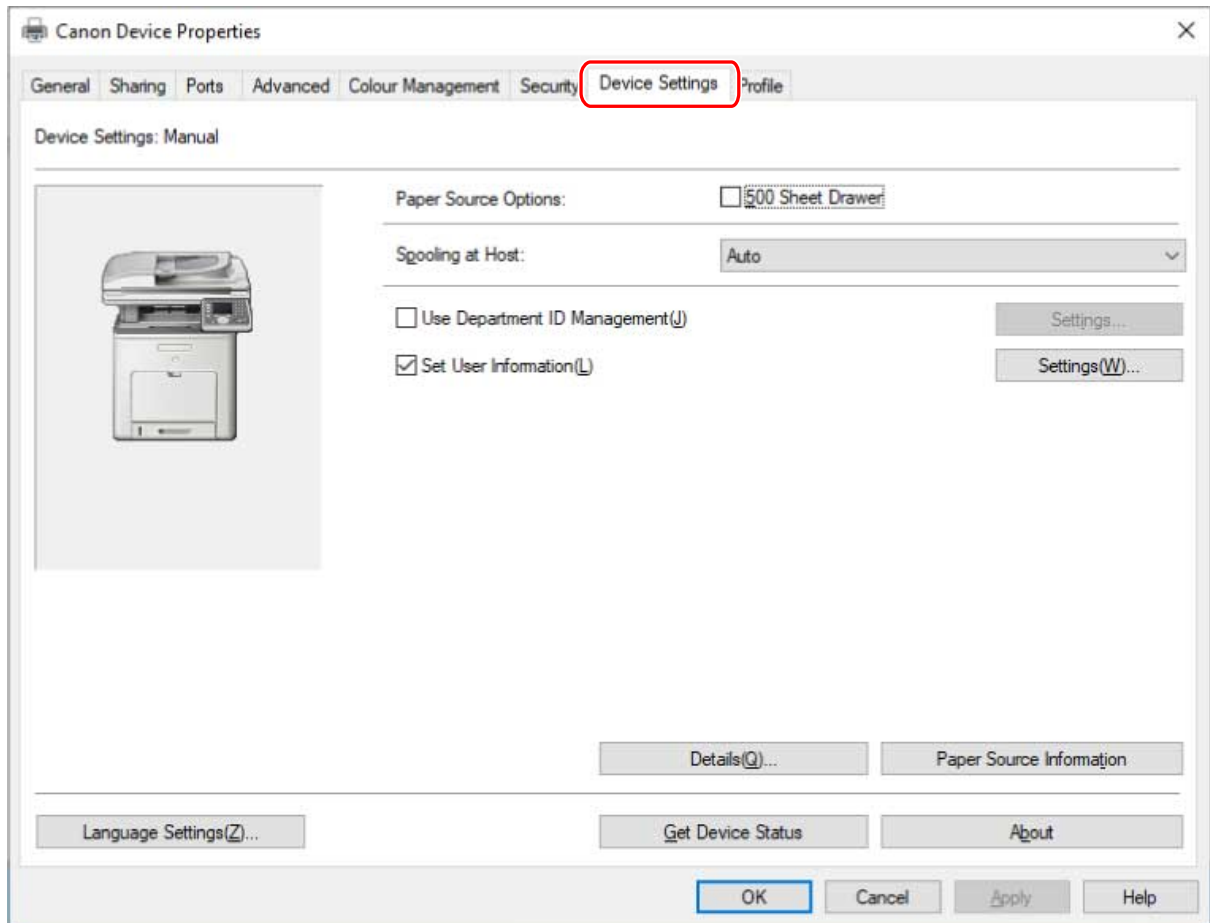
- (1) Display [Bluetooth & devices] (or [Devices]).
- (2) In [Printers & scanners], display the management screen for the device to set.
To display the management screen, click the device or click [Manage] for the corresponding device.
- (3) Click [Printer properties] for the device to set.

If displaying from [Control Panel]

- (1) Display [Devices and Printers].
- (2) From the printer list, right-click the device to be set → select [Printer properties] from the displayed menu.

2 Click the [Device Settings] sheet.

If the retrieval state for device information is [Auto], the device information has already been retrieved. Click [OK] and finish.



3 Click [Get Device Status].

4 If the message "Get information from the device?" is displayed, click [Yes].

If the information has been retrieved, confirm the automatically set option configuration.

If the information is not retrieved, set the option configuration manually. Select the options attached to the device.

5 Click [OK].

Related Topics

- [Automatically Setting the Device Information Retrieval Function\(P. 56\)](#)

Setting the Device Support Functions

This explains the procedure for using functions that the device supports. The functions that can be used in printing vary according to the function version of the device and device-dependent functions.

Prerequisites

- Driver Installation
- Confirm the function version

You can confirm it with the configuration page output from the device. The method for outputting the configuration page varies with each device. For details, refer to the manual of the device.

Procedures

1 Display the printer properties screen.

If displaying from [ Settings] in the Start menu

- (1) Display [Bluetooth & devices] (or [Devices]).
- (2) In [Printers & scanners], display the management screen for the device to set.
To display the management screen, click the device or click [Manage] for the corresponding device.
- (3) Click [Printer properties] for the device to set.

If displaying from [Control Panel]

- (1) Display [Devices and Printers].
- (2) From the printer list, right-click the device to be set → select [Printer properties] from the displayed menu.

2 Click the [Device Settings] sheet.

3 Click [Function] → configure settings as required in the device function settings screen → click [OK].

If you change the functions version, some functions may no longer be usable.

4 Click [OK].

Precautions to Be Taken When Printing

This explains precautions to be taken when printing using the driver.

- The printing procedure varies according to the application. For details, refer to the manual of each application.
- In a network environment using IPP or WSD, check whether IPP printing or WSD printing is enabled at the device. For details, refer to the manual of the device.
- When printing from a Windows Store app, if a message prompting you to move to the desktop screen is displayed, move to the desktop and follow the instructions in the message.

Printing from a Computer

This explains the basic procedure for printing from a computer.

Prerequisites

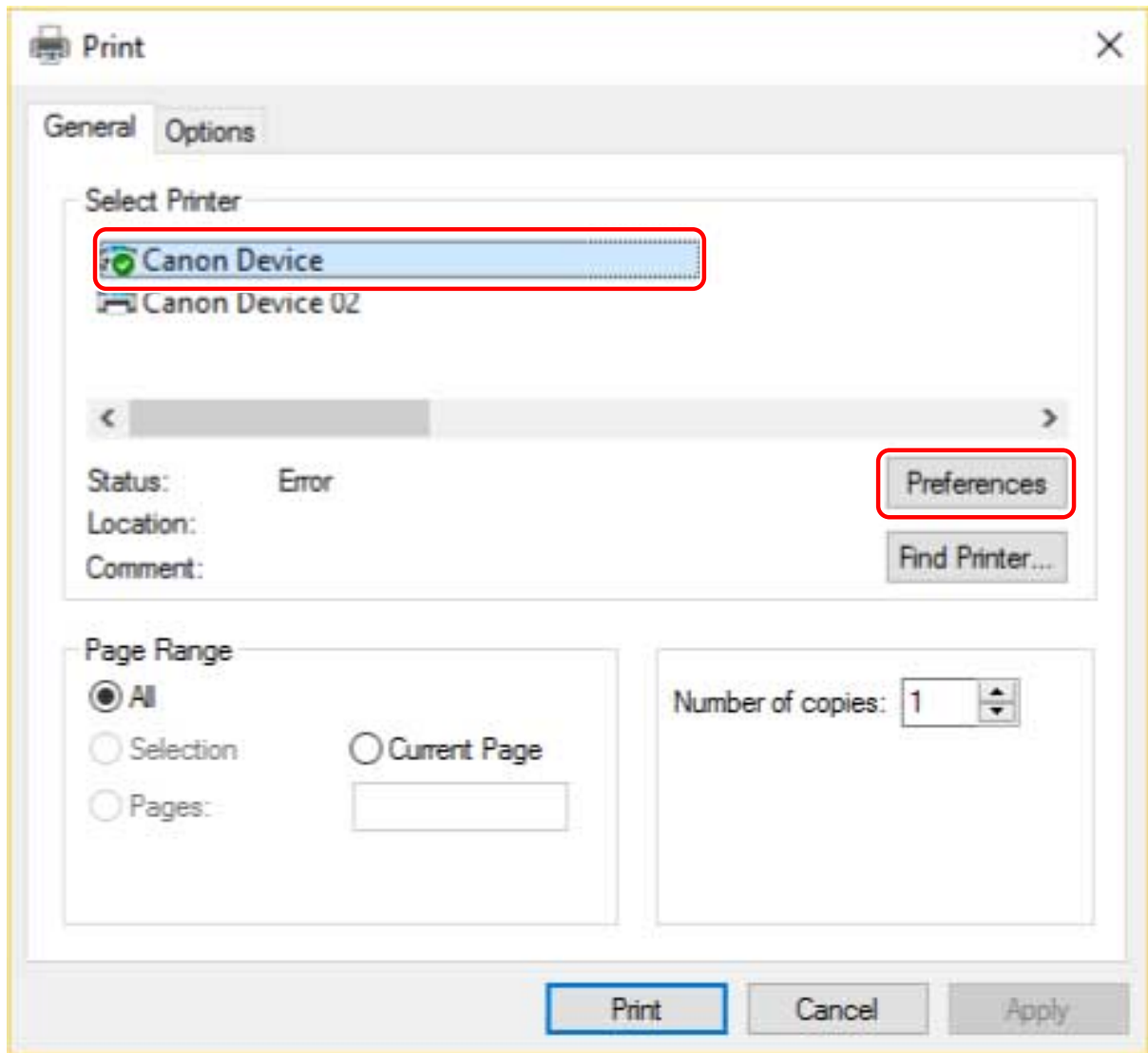
- **Setting the Device Options in the Driver(P. 70)**
If the device information retrieval function is not automatically set, you need to manually set the options installed in the device in the driver.
- **Setting the Device Support Functions(P. 72)**
- **Precautions to Be Taken When Printing(P. 73)**

Procedures

1 Open a document in the application → display the print screen.

2 Select the device you are using → click [Preferences].

Depending on the application, [Preferences] may be called "Printer properties" or "Properties."



3 Set functions as required in the print settings screen of the driver → click [OK].

For an explanation of the settings, refer to the help.

4 Click [Print] (or [OK]).

Related Topics

- How to Refer to the Help(P. 77)

Changing the Default Settings for Printing

You can change the default settings registered in the driver to the desired print settings.

If you change them to settings you use frequently, you will no longer need to set them every time you print.

Prerequisites

- Driver Installation

Procedures

1 Display the print settings screen of the driver.

If displaying from [ Settings] in the Start menu

- (1) Display [Bluetooth & devices] (or [Devices]).
- (2) In [Printers & scanners], display the management screen for the device to set.
To display the management screen, click the device or click [Manage] for the corresponding device.
- (3) Click [Printing preferences] for the device to set.

If displaying from [Control Panel]

- (1) Display [Devices and Printers].
- (2) From the printer list, right-click the device to be set → select [Printing preferences] from the displayed menu.

2 Click each sheet in the print settings screen of the driver → set the necessary items.

For an explanation of the settings, refer to the help.

3 Click [OK].

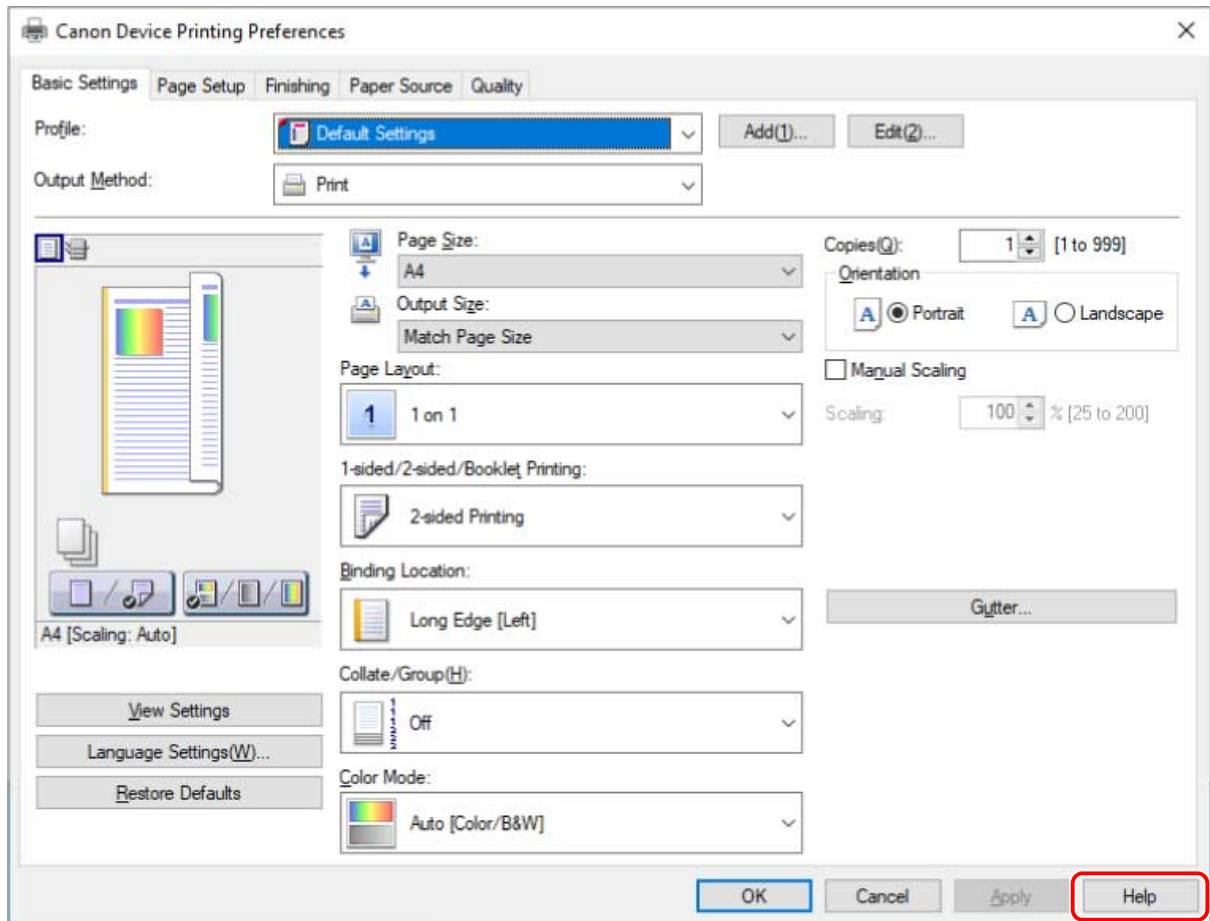
Related Topics

- ▶ [How to Refer to the Help\(P. 77\)](#)

How to Refer to the Help

For details about how to use the driver and each of the functions, refer to the help.

The help is displayed by clicking [Help] in the driver screen.



Appendix

Appendix	79
Creating a Shortcut to the Online Manual	80
Installing the Shortcut to the Online Manual	81
Uninstalling the Shortcut to the Online Manual	82
Cannot discover a device connected via a WSD port	83

Appendix

Contains additional information about the printer driver, such as restrictions, etc.

- ▶ **Creating a Shortcut to the Online Manual(P. 80)**
- ▶ **Cannot discover a device connected via a WSD port(P. 83)**

Creating a Shortcut to the Online Manual

You can create a shortcut on your desktop to the website where online manuals for Canon products are available.

- ▶ **Installing the Shortcut to the Online Manual(P. 81)**
- ▶ **Uninstalling the Shortcut to the Online Manual(P. 82)**

Installing the Shortcut to the Online Manual

This explains the procedure for installing a shortcut to the website where online manuals for Canon products are available.

1 Insert the supplied CD-ROM into your computer.

2 Click [Installation].

If the CD-ROM menu is not displayed, click the subsequent "Open details."

Start the installer by following the procedure below.

- If a message prompting you to insert a CD-ROM is displayed or if Windows Explorer is displayed: Execute [MInst.exe].
- If nothing is displayed: Double-click the CD-ROM icon.

3 Select only the [Manuals] checkbox in the [Installation] screen → click [Install].

4 Read the license agreement → click [Yes].

5 Check the installation destination → click [Install].

If you want to change the installation destination, click [Browse].

The installation operation begins.

6 Click [Exit].

7 Click [Next] → click [Exit].

A shortcut to the website where online manuals for Canon products are available is created on your desktop.

Uninstalling the Shortcut to the Online Manual

If the shortcut to the website where online manuals for Canon products are available is no longer necessary, uninstall it according to the following procedure.

1 Insert the supplied CD-ROM into your computer.

2 Click [Start Software Programs].

If the CD-ROM menu is not displayed, click the subsequent "Open details."

Start the installer by following the procedure below.

- If a message prompting you to insert a CD-ROM is displayed or if Windows Explorer is displayed: Execute [MInst.exe].
- If nothing is displayed: Double-click the CD-ROM icon.

3 Click [Start] for the [Manual Uninstaller] in the [Start Software Programs] screen.

4 Click [Next].

The uninstallation operation begins.

5 Click [Exit].

6 In the [Start Software Programs] screen, click [Back].

7 Click [Exit] in the setup screen.

Cannot discover a device connected via a WSD port

This explains what to do if the device is not displayed in the [Printer List] of the installer even if it is connected and discovered via a WSD port, when installing with a network connection.

A number of causes can be considered. Change the settings as required while referring to each "Remedy."

Cause 1.

The device settings are incorrect.

Remedy

Check whether the following have been set at the device. If they have not been set, change the settings or install the appropriate driver.

- The settings for both [Use WSD] and [Multicast Discovery Settings] are enabled.
- [PDL Selection (Plug and Play)] and the page description language of the driver match.
For details about the setting method for the page description language (plug and play) function of the device, refer to the manual of the device.

Cause 2.

The network settings of the operating system are incorrect.

Remedy

Check whether the necessary settings have been configured in the network settings of the operating system. If they have not been set, change the settings.

(1) Display [Settings] > [Network & internet].

(2) Click [Properties] (or [Change connection properties]).

If you cannot find [Properties] (or [Change connection properties]), click the name of the connected network in [Show available networks] to display the screen for selecting the network profile.

(3) Select a private network for the network profile.

If the above method cannot be used, follow the procedures below. The screen for selecting the network profile may not be displayed, depending on your environment.

In Windows Server 2016

Display [Settings] > [Network & Internet] → click an icon displayed in the connection method to the current network → enable [Make this PC discoverable].

In Windows 8.1/Server 2012 R2

(1) From the [Desktop] screen, display the charm bar → click [Settings] > [Change PC settings] > [Network]

(2) Click an icon displayed in the connection method to the current network → enable [Find devices and content].

In Windows 7/Server 2008 R2/Server 2012

Display [Control Panel] > [Network and Internet] > [Network and Sharing Center] → click [Change advanced sharing settings] → select [Public] (or [Guest or Public]) > [Turn on network discovery].

In Windows Vista/Server 2008

Display [Control Panel] > [Network and Internet] > [Network and Sharing Center] → click the button corresponding to [Sharing and Discovery] > [Network Discovery] → select [Turn on network discovery].

Cause 3.

The device is not displayed in the discovery results because the driver corresponding to the discovered device is already installed.

Remedy

If you want to install a driver by discovering a device, uninstall the driver first, then discover it again.

Related Topics

- ▶ **Installing Using a WSD Port(P. 45)**
- ▶ **Uninstalling the Driver(P. 65)**

This Font Software is licensed under the SIL Open Font License, Version 1.1.

This license is copied below, and is also available with a FAQ at: <http://scripts.sil.org/OFL>

SIL OPEN FONT LICENSE Version 1.1 - 26 February 2007

PREAMBLE

The goals of the Open Font License (OFL) are to stimulate worldwide development of collaborative font projects, to support the font creation efforts of academic and linguistic communities, and to provide a free and open framework in which fonts may be shared and improved in partnership with others.

The OFL allows the licensed fonts to be used, studied, modified and redistributed freely as long as they are not sold by themselves. The fonts, including any derivative works, can be bundled, embedded, redistributed and/or sold with any software provided that any reserved names are not used by derivative works. The fonts and derivatives, however, cannot be released under any other type of license. The requirement for fonts to remain under this license does not apply to any document created using the fonts or their derivatives.

DEFINITIONS

"Font Software" refers to the set of files released by the Copyright Holder(s) under this license and clearly marked as such. This may include source files, build scripts and documentation.

"Reserved Font Name" refers to any names specified as such after the copyright statement(s).

"Original Version" refers to the collection of Font Software components as distributed by the Copyright Holder(s).

"Modified Version" refers to any derivative made by adding to, deleting, or substituting -- in part or in whole -- any of the components of the Original Version, by changing formats or by porting the Font Software to a new environment.

"Author" refers to any designer, engineer, programmer, technical writer or other person who contributed to the Font Software.

PERMISSION & CONDITIONS

Permission is hereby granted, free of charge, to any person obtaining a copy of the Font Software, to use, study, copy, merge, embed, modify, redistribute, and sell modified and unmodified copies of the Font Software, subject to the following conditions:

- 1) Neither the Font Software nor any of its individual components, in Original or Modified Versions, may be sold by itself.
- 2) Original or Modified Versions of the Font Software may be bundled, redistributed and/or sold with any software, provided that each copy contains the above copyright notice and this license. These can be included either as stand-alone text files, human-readable headers or in the appropriate machine-readable metadata fields within text or binary files as long as those fields can be easily viewed by the user.
- 3) No Modified Version of the Font Software may use the Reserved Font Name(s) unless explicit written permission is granted by the corresponding Copyright Holder. This restriction only applies to the primary font name as presented to the users.
- 4) The name(s) of the Copyright Holder(s) or the Author(s) of the Font Software shall not be used to promote, endorse or advertise any Modified Version, except to acknowledge the contribution(s) of the Copyright Holder(s) and the Author(s) or with their explicit written permission.
- 5) The Font Software, modified or unmodified, in part or in whole, must be distributed entirely under this license, and must not be distributed under any other license. The requirement for fonts to remain under this license does not apply to any document created using the Font Software.

TERMINATION

This license becomes null and void if any of the above conditions are not met.

DISCLAIMER

THE FONT SOFTWARE IS PROVIDED "AS IS", WITHOUT WARRANTY OF ANY KIND, EXPRESS OR IMPLIED, INCLUDING BUT NOT LIMITED TO ANY WARRANTIES OF MERCHANTABILITY, FITNESS FOR A PARTICULAR PURPOSE AND NONINFRINGEMENT OF COPYRIGHT, PATENT, TRADEMARK, OR OTHER RIGHT. IN NO EVENT SHALL THE COPYRIGHT HOLDER BE LIABLE FOR ANY CLAIM, DAMAGES OR OTHER LIABILITY, INCLUDING ANY GENERAL, SPECIAL, INDIRECT, INCIDENTAL, OR CONSEQUENTIAL DAMAGES, WHETHER IN AN ACTION OF CONTRACT, TORT OR OTHERWISE, ARISING FROM, OUT OF THE USE OR INABILITY TO USE THE FONT SOFTWARE OR FROM OTHER DEALINGS IN THE FONT SOFTWARE.