



Windows

UFRII LT Printer Driver

User's Guide

Contents

Introduction	2
How to Use the Manual	3
Notations Used in the Manual	4
Disclaimers	5
Copyright	6
Trademarks	7
Before Use	9
How to Refer to the Manual of the Device	11
Printing	13
Printing from a Computer	14
Scaling	17
Watermark Printing	18
Poster Printing	19
Attaching Encryption When Printing	23
Changing the Default Settings	24
Creating a Booklet When Printing	26
Booklet Printing	27
Creating a Booklet in Sets	28
Using Various Types of Paper	30
Registering Custom Paper Sizes	31
Inserting Sheets Between Transparencies	32
Printing Multiple Files Together	34
About the [Edit and Preview] Function	35
Printing Files Together	36
Checking the Print Preview	38
Changing the Print Settings of the Combined File	40
Editing Favorite Settings	43
Registering Favorite Settings	44
Editing the Favorite Settings List	45
Coordinating with the Device Functions	48
About the Acquire Device Information Function	49
Setting Device Information	50

Setting the Authentication Function	52
Setting the User Name	54

Settings List 56

Common Settings for All Sheets	57
[Basic Settings] Sheet	60
[Page Setup] Sheet	62
[Finishing] Sheet	65
[Paper Source] Sheet	71
[Quality] Sheet	72
[Device Settings] Sheet	75
[Profile] Sheet	79
Canon PageComposer	81

Troubleshooting 85

Driver settings cannot be set	86
Print results are unsatisfactory	87
Printing takes a long time	89
Print results are too dark or too bright	90
Cannot use the acquire device information function or authentication function	91

Introduction

Introduction	2
How to Use the Manual	3
Notations Used in the Manual	4
Disclaimers	5
Copyright	6
Trademarks	7

Introduction

- ▶ **How to Use the Manual(P. 3)**
- ▶ **Disclaimers(P. 5)**
- ▶ **Copyright(P. 6)**
- ▶ **Trademarks(P. 7)**

How to Use the Manual

This explains things that you need to know in order to use this manual.

▶ **Notations Used in the Manual(P. 4)**

Notations Used in the Manual

This explains symbols and settings used in this manual.

Symbols Used in This Manual

In this manual, explanations of items and operations that must be followed while using the driver are set forth the symbols that indicate the following.



IMPORTANT

- Indicates operational requirements and restrictions. Be sure to read these items carefully to operate the product correctly, and avoid damage to the product.



NOTE

- Indicates a clarification of an operation, or contains additional explanations for a procedure. Reading these notes is highly recommended.

About Settings

In this manual, setting names displayed on the computer screen are represented as shown in the following examples.

Example:

[Print]

[OK]

Disclaimers

The information in this document is subject to change without notice.

CANON INC. MAKES NO WARRANTY OF ANY KIND WITH REGARD TO THIS MATERIAL, EITHER EXPRESS OR IMPLIED, EXCEPT AS PROVIDED HEREIN, INCLUDING WITHOUT LIMITATION, THEREOF, WARRANTIES AS TO MARKETABILITY, MERCHANTABILITY, FITNESS FOR A PARTICULAR PURPOSE OF USE OR NON-INFRINGEMENT. CANON INC. SHALL NOT BE LIABLE FOR ANY DIRECT, INCIDENTAL, OR CONSEQUENTIAL DAMAGES OF ANY NATURE, OR LOSSES OR EXPENSES RESULTING FROM THE USE OF THIS MATERIAL.

Copyright

Copyright CANON INC. 2020

No part of this publication may be reproduced, transmitted, transcribed, stored in a retrieval system, or translated into any language or computer language in any form or by any means, electronic, mechanical, magnetic, optical, chemical, manual, or otherwise, without the prior written permission of Canon Inc.

Trademarks

Microsoft, Windows, Windows Server, Internet Explorer, and Microsoft Edge are either registered trademarks or trademarks of Microsoft Corporation in the United States and/or other countries.

macOS and Safari are trademarks of Apple Inc.

Other product and company names herein may be the trademarks of their respective owners.

Before Use

Before Use 9

Before Use

- The newest driver software is posted on the Canon web site. Please verify the operating environment etc. and download the appropriate software as required.
Canon Global Site: <https://global.canon/>
- The functions that you can use may vary according to the following conditions.
 - The device you are using and its settings
 - The firmware version of the device
 - The option structure of the device
 - The driver version
 - The computer environment you are using
- When printing from a Windows Store app, because you cannot display the print settings screen of the driver, the number of functions you can set is limited.
- The screen content, procedures, etc. displayed and described in the manual may differ from those actually displayed.
- In this manual, examples using Windows 10 are explained.

How to Refer to the Manual of the Device

How to Refer to the Manual of the Device 11

How to Refer to the Manual of the Device

There are cases when, in order to use the functions of this driver, operations must be carried out at the device beforehand.

For information about how to operate the device, refer to the manual of the device.

Printing

Printing	13
Printing from a Computer	14
Scaling	17
Watermark Printing	18
Poster Printing	19
Attaching Encryption When Printing	23
Changing the Default Settings	24

Printing

- ▶ **Printing from a Computer(P. 14)**
- ▶ **Scaling(P. 17)**
- ▶ **Watermark Printing(P. 18)**
- ▶ **Poster Printing(P. 19)**
- ▶ **Attaching Encryption When Printing(P. 23)**
- ▶ **Changing the Default Settings(P. 24)**

Printing from a Computer

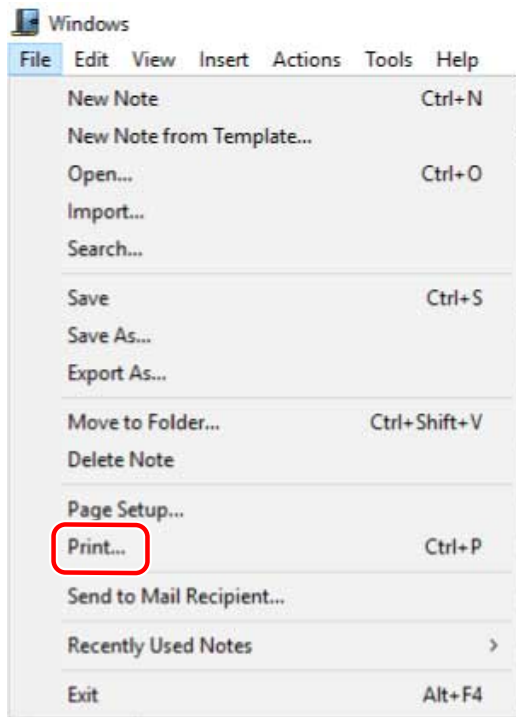
This explains the basic procedure for printing configuring the printer driver settings.



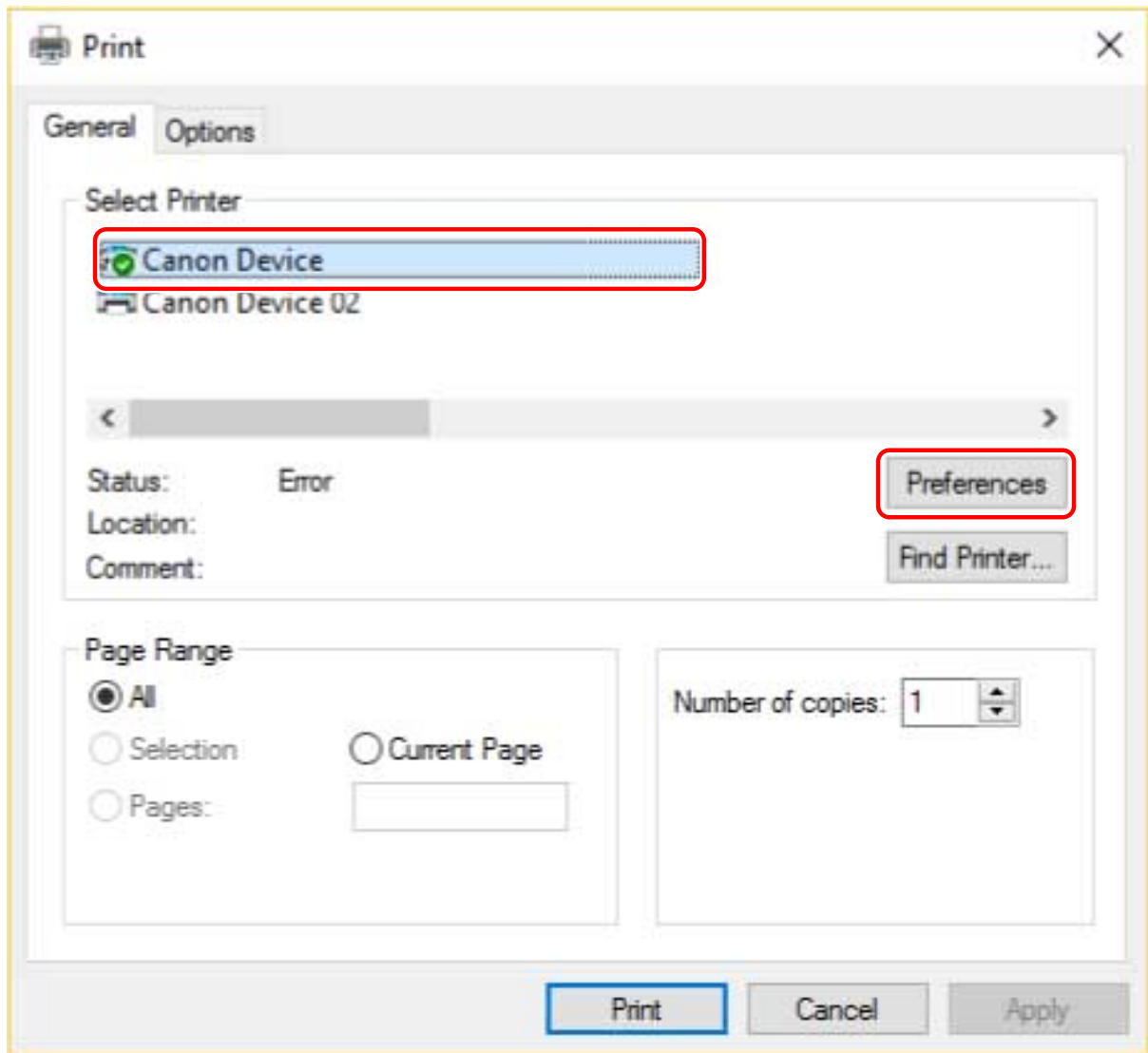
NOTE

- When using a device connected via a WSD port, enable [Use WSD] at the device.

1 Select [Print] from the menu of the application.

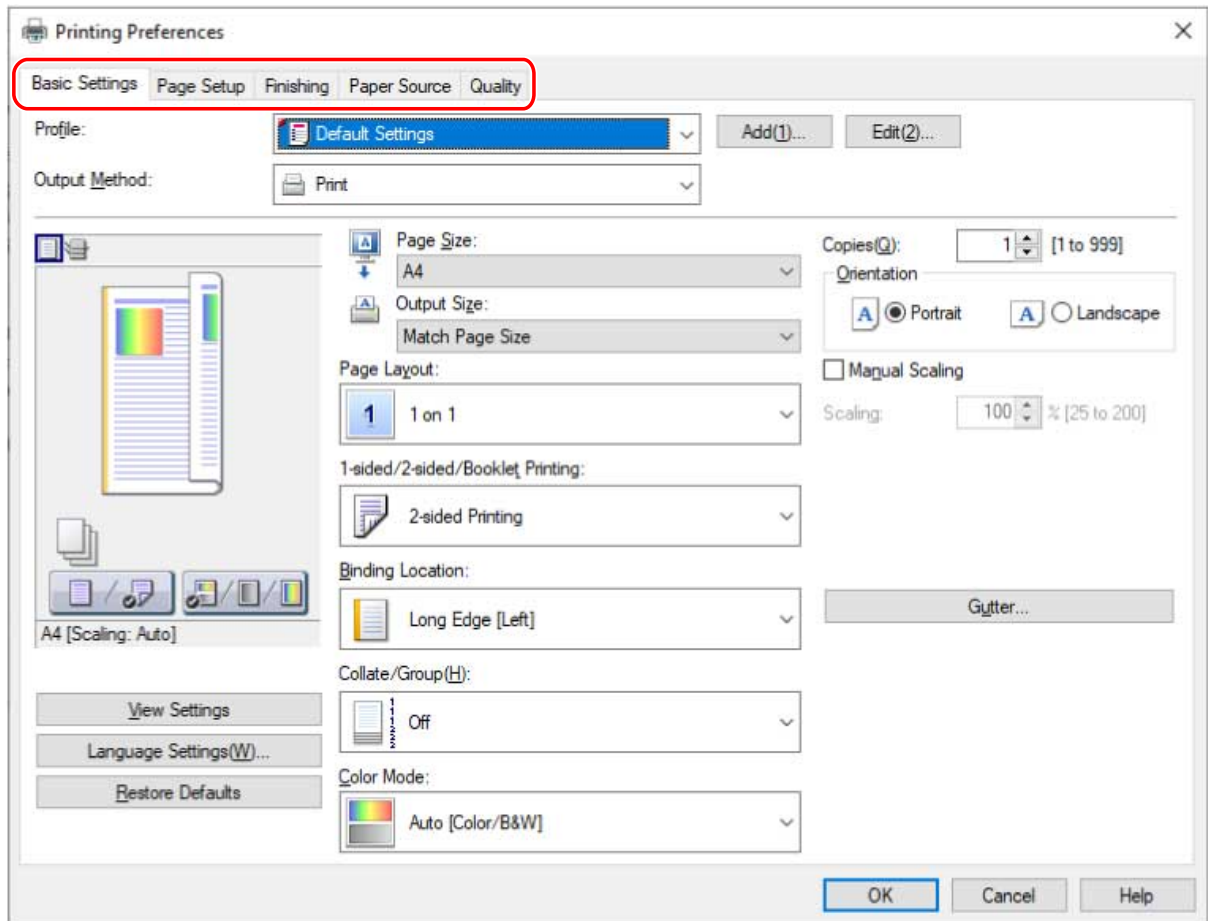


2 In the print screen, select the device you are using → click [Preferences], [Printer properties], or [Properties].



3 In the print settings screen of the driver, set the required items.

If necessary, switch sheets and configure relevant settings.

**NOTE**

- If the function you want to use is not displayed in the print settings screen, configure the print settings after enabling the functions of the device by acquiring the device information etc.

4 Click [OK].

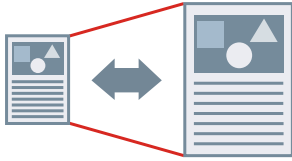
5 In the print screen, click [Print] or [OK].

Related Topics

- ▶ Changing the Default Settings(P. 24)
- ▶ Setting Device Information(P. 50)
- ▶ Driver settings cannot be set(P. 86)

Scaling

You can enlarge or reduce the print data when printing.



To Scale to the Output Page Size

- 1** Display the [Basic Settings] or [Page Setup] sheet.
- 2** Select the paper size set in the application from [Page Size].
- 3** Select the paper size you want to print on from [Output Size].

To Specify a Desired Scale

- 1** Display the [Basic Settings] or [Page Setup] sheet.
- 2** Select [Manual Scaling] → specify the magnification in [Scaling].

Related Topics

- ▶ [Basic Settings] Sheet(P. 60)
- ▶ [Page Setup] Sheet(P. 62)
- ▶ Registering Custom Paper Sizes(P. 31)
- ▶ Driver settings cannot be set(P. 86)

Watermark Printing

You can superimpose and print semi-transparent characters such as [TOP SECRET] or [DRAFT] over print data.

You can also create new watermarks.



To Attach and Print a Watermark

- 1** Display the [Page Setup] sheet.
- 2** Select [Watermark] → select a watermark name.

To Create New Watermarks

- 1** Display the [Page Setup] sheet.
- 2** Select [Watermark] → click [Edit Watermark].
- 3** In the [Edit Watermark] dialog box, click [Add] → enter a name in [Name].
- 4** In [Attributes], set the characters and attributes for the watermark.
- 5** In [Alignment], set the positioning of the watermark.
- 6** In [Print Style], set the border and superimposition of the watermark → click [OK].
- 7** In the [Edit Watermark] dialog box, click [OK].

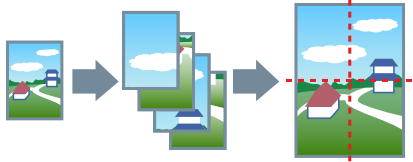
The created watermark is added to the list in the [Page Setup] sheet > [Watermark].

Related Topics

- 🔗 [Page Setup] Sheet(P. 62)

Poster Printing

You can enlarge the print data of one page and print it over multiple sheets of paper. When the output sheets are joined together, they form a large print like a poster.



This topic also introduces poster printing setting and output examples.

▶ **Poster Printing Setting and Output Examples(P. 19)**

To Perform Poster Printing

- 1** Display the [Basic Settings] sheet.
- 2** Select [1-sided Printing] from [1-sided/2-sided/Booklet Printing].
- 3** Display the [Basic Settings] or [Page Setup] sheet.
- 4** Select [Poster [N x N]] from [Page Layout].
 N x N represents the number of sheets of paper over which the print data will be divided and printed.
 When printing with border lines, or when setting margins or the range of pages to be printed, perform the following procedure.
- 5** Click [Poster Details].
- 6** In the [Poster Details] dialog box, set any necessary items → click [OK].

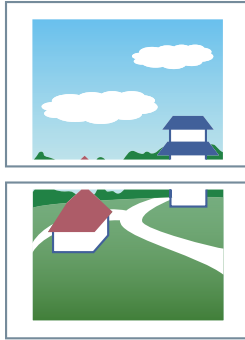
Poster Printing Setting and Output Examples

This shows combinations of setting examples and output results relating to poster printing. The setting examples are shown in combination with the setting state in the [Poster Details] dialog box whenever required.

Setting Example 1.

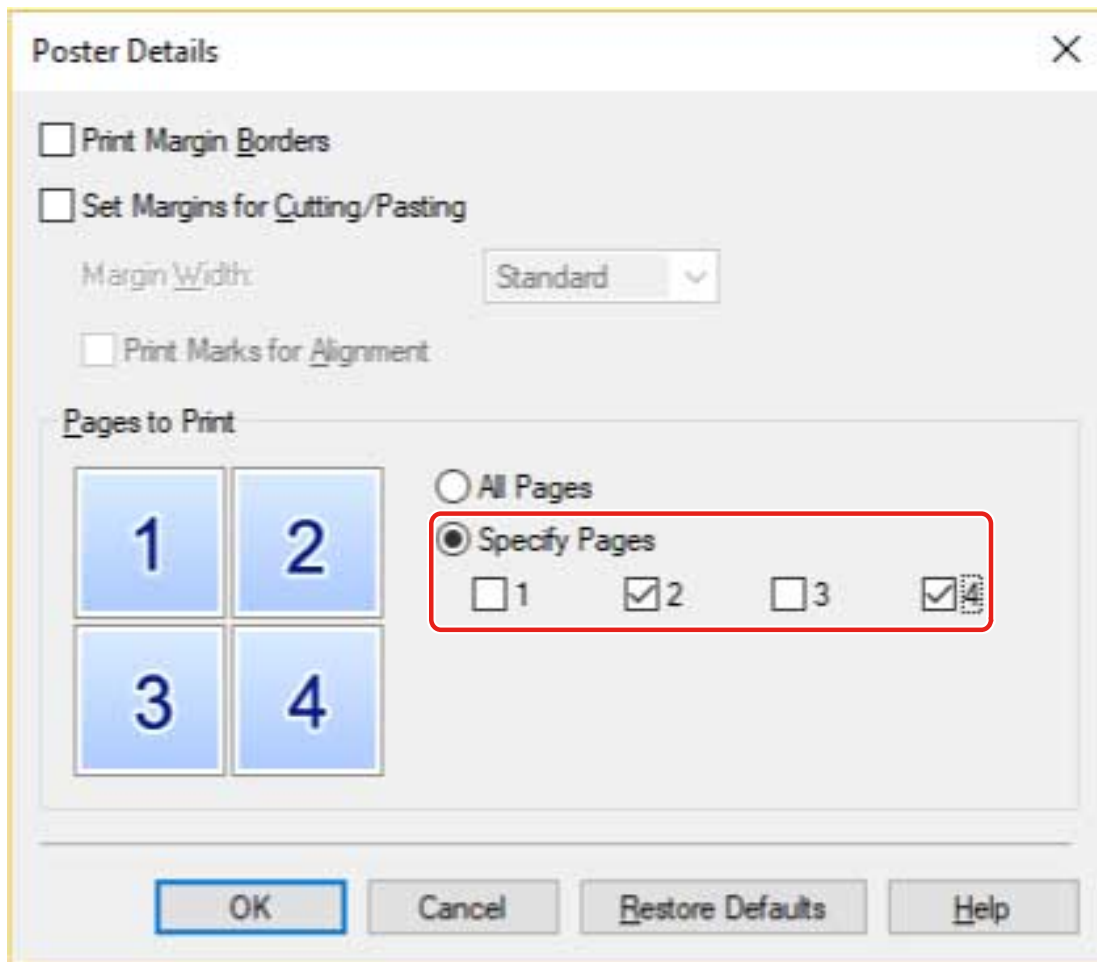
- [Basic Settings] sheet > [Orientation]: [Portrait]
- [Basic Settings] or [Page Setup] sheet > [Page Layout]: [Poster [1 x 2]]

Output Result

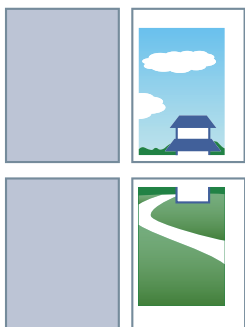


Setting Example 2.

- [Basic Settings] or [Page Setup] sheet > [Page Layout]: [Poster [2 x 2]]
- [Poster Details] dialog box > [Pages to Print] > [Specify Pages]: [2] and [4]

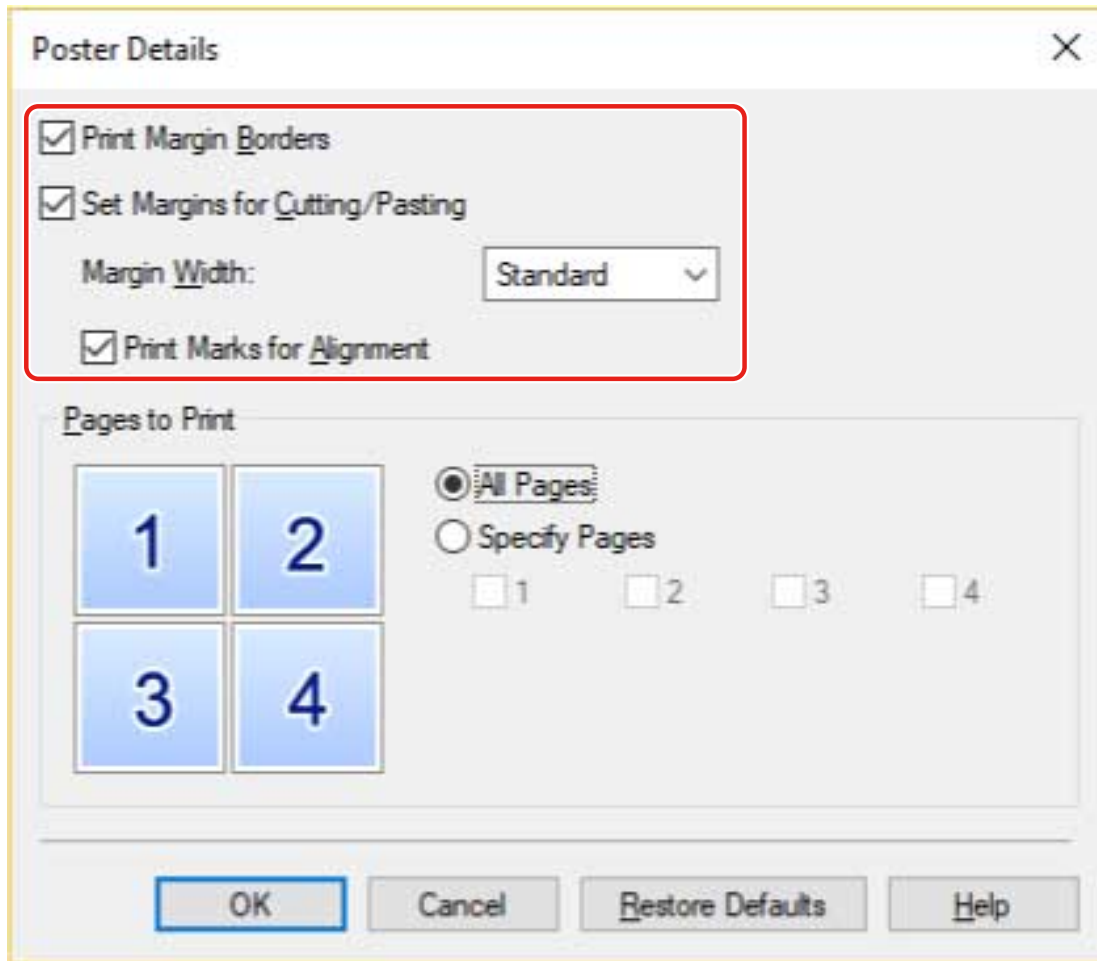


Output Result

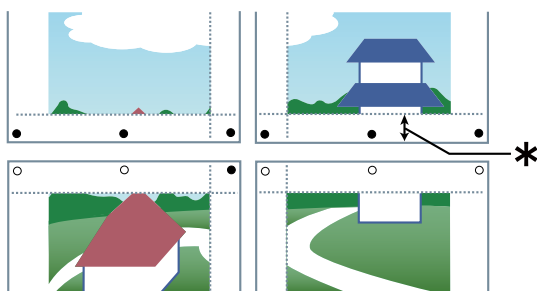


Setting Example 3.

- [Basic Settings] or [Page Setup] sheet > [Page Layout]: [Poster [2 x 2]]
- [Poster Details] dialog box: [Print Margin Borders], [Set Margins for Cutting/Pasting], and [Print Marks for Alignment]



Output Result



Legend

Broken line: border

○ : paste mark

● : cut mark

* : the margin set for [Margin Width] (10 mm (0.39 inches) when [Standard] is selected.)

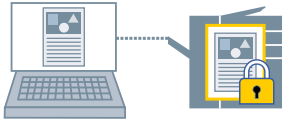
Related Topics

- [Basic Settings] Sheet(P. 60)

▶ [Page Setup] Sheet(P. 62)

Attaching Encryption When Printing

You can attach a PIN to print data and save it in the device. When you print the saved data, enter the PIN in the control panel of the device. This function is useful when printing confidential documents etc.



NOTE

- If you register the PIN used in secured printing as a default setting, you can reduce the effort required to configure settings when printing.

- 1** Display the [Basic Settings], [Page Setup], [Finishing], [Paper Source], or [Quality] sheet.
- 2** Select [Secured Print] from [Output Method] → click [Yes].
- 3** In the [Secured Print Details] dialog box, enter [User Name] and [PIN]/[Password] → click [OK].

If the [Confirm PIN]/[Confirm Password] dialog box is displayed when performing secured printing, confirm or set the data name, user name, and PIN/password.

Related Topics

- ▶ [Common Settings for All Sheets\(P. 57\)](#)
- ▶ [Changing the Default Settings\(P. 24\)](#)

Changing the Default Settings

You can change the default settings to desired print settings. If you change them to settings that you use frequently, you can reduce the effort required to configure settings when printing.

- 1 Display [Devices and Printers] from the [Control Panel] of Windows.**
- 2 Right-click the icon of the device you are going to set → select [Printing Preferences] from the displayed menu.**

If you are using the driver with multiple device models, select the model you are going to set after selecting [Printing Preferences].
- 3 In the print settings screen of the driver, set the required items.**

If necessary, switch sheets and configure relevant settings.
- 4 Click [OK].**

Creating a Booklet When Printing

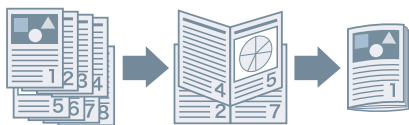
Creating a Booklet When Printing	26
Booklet Printing	27
Creating a Booklet in Sets	28

Creating a Booklet When Printing

- ▶ **Booklet Printing(P. 27)**
- ▶ **Creating a Booklet in Sets(P. 28)**

Booklet Printing

You can print with the pages automatically arranged so they create a booklet when folded in half.



- 1** Display the [Basic Settings] or [Finishing] sheet.
- 2** Select [Booklet Printing] from [1-sided/2-sided/Booklet Printing] or [Print Style].
To set the binding position and gutter, follow the procedure below.
- 3** Click [Booklet].
- 4** In the [Detailed Settings for Booklet] dialog box, select the binding position from [Book Opening].
- 5** Select [Specify Booklet Gutter] → specify a gutter width in [Booklet Gutter].
- 6** Click [OK].

Related Topics

- ▶ [Basic Settings] Sheet(P. 60)
- ▶ [Finishing] Sheet(P. 65)
- ▶ Creating a Booklet in Sets(P. 28)

Creating a Booklet in Sets

When creating a booklet from a document with a large number of pages, you can divide the pages into multiple sets and print them.



- 1** Display the [Basic Settings] or [Finishing] sheet.
- 2** Select [Booklet Printing] from [1-sided/2-sided/Booklet Printing] or [Print Style].
- 3** Click [Booklet].
- 4** Select [Booklet Printing Method] > [Divide into Sets].
- 5** Specify the number of pages contained in each set in [Sheets per Set].
- 6** Click [OK].

Related Topics

- ▶ [Basic Settings] Sheet(P. 60)
- ▶ [Finishing] Sheet(P. 65)
- ▶ Booklet Printing(P. 27)

Using Various Types of Paper

Using Various Types of Paper	30
Registering Custom Paper Sizes	31
Inserting Sheets Between Transparencies	32

Using Various Types of Paper

- ▶ **Registering Custom Paper Sizes(P. 31)**
- ▶ **Inserting Sheets Between Transparencies(P. 32)**

Registering Custom Paper Sizes

You can register a desired paper size and use it for printing. You can also use registered custom paper sizes to print with other devices from the computer you are using.

- 1** Display [Devices and Printers] from the [Control Panel] of Windows.
- 2** Right-click the icon of the device you are going to set → select [Printing Preferences] from the displayed menu.
- 3** Display the [Page Setup] sheet.
- 4** Click [Custom Paper Size].
- 5** In the [Custom Paper Size Settings] dialog box, set [Unit] and [Paper Size] → click [Register].
- 6** Click [OK].

Related Topics

- ▶ [Page Setup] Sheet(P. 62)

Inserting Sheets Between Transparencies

You can print with sheets of paper inserted between transparencies. You can also print on the inserted sheets.

- 1 Display the [Paper Source] sheet.**
- 2 Select [Select by] > [Paper Source]/[Paper Type].**
- 3 Select [Transparency Cover Sheets]/[Transparency Interleaving] from [Paper Selection].**
- 4 Set [Cover Sheets]/[Interleaf Sheets] and [Transparencies].**

If you select [Select by] > [Paper Source], select the paper source in which the paper to be used is set.
If you select [Select by] > [Paper Type], select the type of paper to be used.
- 5 If you also want to print on inserted sheets, select [Print on Cover Sheets]/[Print on Interleaf Sheets].**
- 6 Click [OK].**

Related Topics

- [\[Paper Source\] Sheet\(P. 71\)](#)

Printing Multiple Files Together

Printing Multiple Files Together	34
About the [Edit and Preview] Function	35
Printing Files Together	36
Checking the Print Preview	38
Changing the Print Settings of the Combined File	40

Printing Multiple Files Together

- ▶ **About the [Edit and Preview] Function(P. 35)**
- ▶ **Printing Files Together(P. 36)**
- ▶ **Checking the Print Preview(P. 38)**
- ▶ **Changing the Print Settings of the Combined File(P. 40)**

About the [Edit and Preview] Function

The [Edit and Preview] Function allows you to combine multiple files into one for printing.

You can set the [Edit and Preview] function from [Output Method] in each sheet of the print settings screen.

When you click the print button of an application, the Canon PageComposer main screen opens, and you can also do the following:

- Preview the print data for confirmation
- Change the print settings after checking the preview
- Delete unnecessary pages
- Perform proof printing
- Combine data created with different applications into one file for printing
- Unify the print settings when combining multiple files



Related Topics

- ▶ [Common Settings for All Sheets\(P. 57\)](#)
- ▶ [Canon PageComposer\(P. 81\)](#)
- ▶ [Printing Files Together\(P. 36\)](#)
- ▶ [Checking the Print Preview\(P. 38\)](#)
- ▶ [Changing the Print Settings of the Combined File\(P. 40\)](#)

Printing Files Together

You can combine multiple files into one file and print it. You can change the print settings for editing the combined file using Canon PageComposer.

Here, the procedure for performing operations from the icons in the toolbar of Canon PageComposer will be explained. You can also perform operations from the menu.

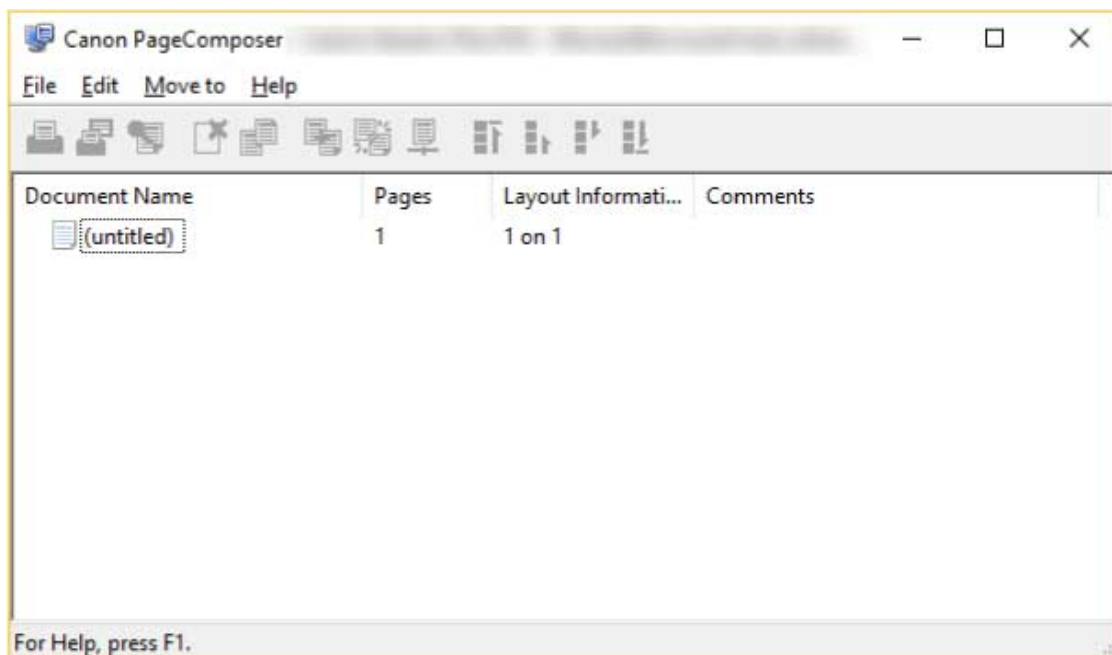
1 Display the [Basic Settings], [Page Setup], [Finishing], [Paper Source], or [Quality] sheet.

2 Select [Edit and Preview] from [Output Method] → click [OK].


If you want to set the output method after combining files, click [Details] → select the output method from [Output Method After Edit and Preview] → click [OK].

3 Click [OK] → click [Print] or [OK] in the print screen.

The Canon PageComposer main screen is displayed.



4 Repeat steps 1 to 3 for each file you want to combine.

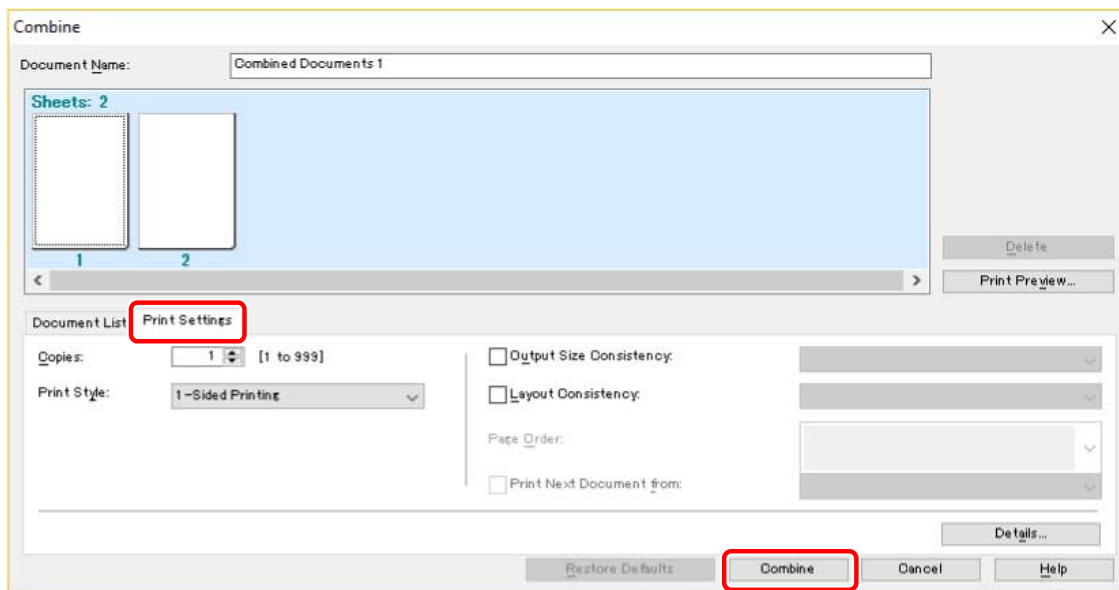
5 In the Canon PageComposer main screen, select the files you want to combine from the list → click [] (Combine Documents).


6 In the [Combine] dialog box, set a name in [Document Name] if required.

7 If you want to change the print settings, click [Print Settings] sheet → set the required items → click [Combine].

You can check the current settings in the preview.

If you want to delete a page, select the page in the preview → click [Delete].



- 8** In the Canon PageComposer main screen, select the combined file → click [] (Print).

Related Topics

- ▶ Common Settings for All Sheets(P. 57)
- ▶ Canon PageComposer(P. 81)
- ▶ Checking the Print Preview(P. 38)
- ▶ Changing the Print Settings of the Combined File(P. 40)

Checking the Print Preview

You can preview the print data and check the page layout settings before printing.

Here, the procedure for performing operations from the icons in the toolbar of Canon PageComposer will be explained. You can also perform operations from the menu.

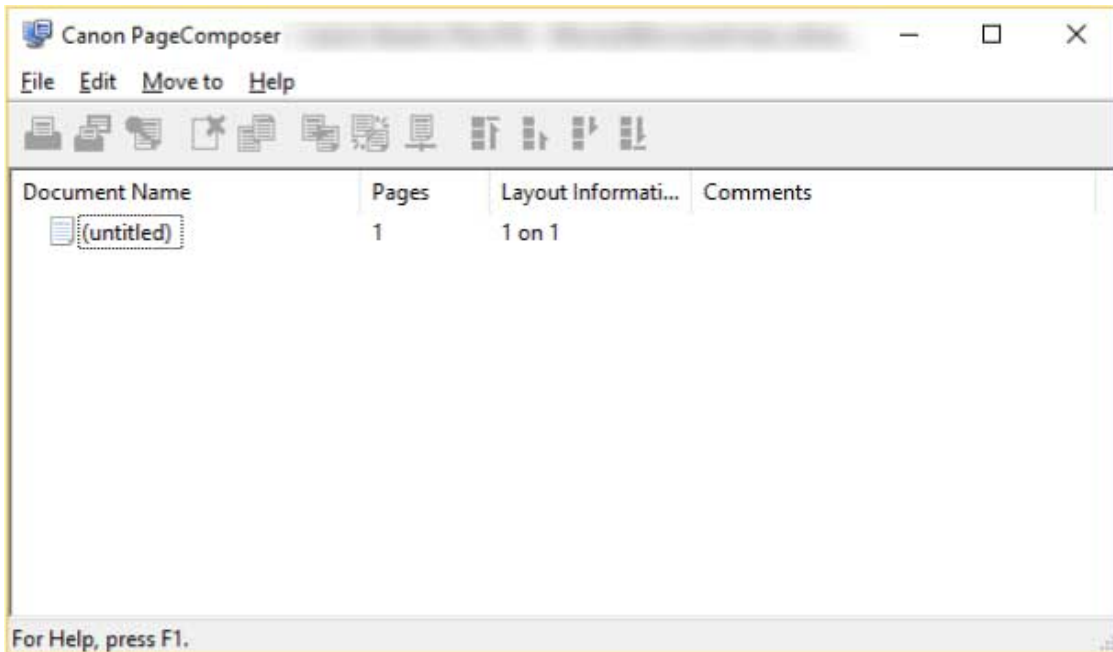
1 Display the [Basic Settings], [Page Setup], [Finishing], [Paper Source], or [Quality] sheet.


2 Select [Edit and Preview] from [Output Method] → click [OK].

If you want to set the output method after combining files, click [Details] → select the output method from [Output Method After Edit and Preview] → click [OK].


3 Click [OK] → click [Print] or [OK] in the print screen.

The Canon PageComposer main screen is displayed.



4 In the Canon PageComposer main screen, select the file whose print preview you want to check from the list → click [] (Print Preview).

5 In the [Print Preview] dialog box, check the preview → click [Close].

Click [] (Next) to display the next page.

Click the page image to zoom in or out.

Related Topics


- Common Settings for All Sheets(P. 57)

- ▶ **Canon PageComposer(P. 81)**
- ▶ **Printing Files Together(P. 36)**
- ▶ **Print results are unsatisfactory(P. 87)**

Changing the Print Settings of the Combined File

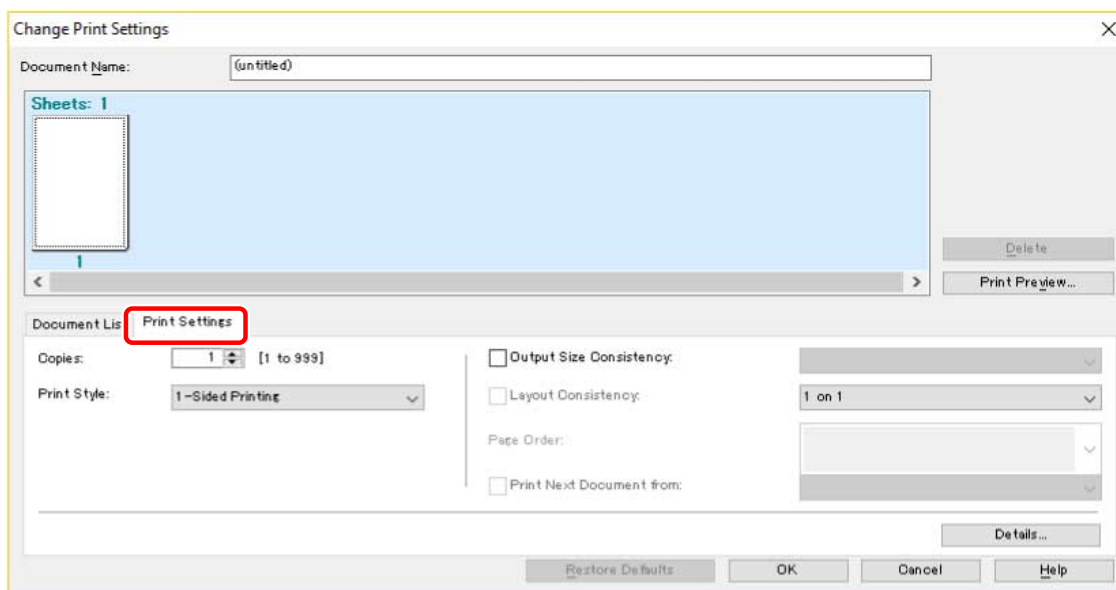
You can change the print settings of the combined file using Canon PageComposer. When editing files with different page sizes or layouts, you can unify the settings.

Here, the procedure for performing operations from the icons in the toolbar of Canon PageComposer will be explained. You can also perform operations from the menu.

- 1** In the Canon PageComposer main screen, select the file whose settings you want to change from the list → click [] (Change Print Settings).
- 2** In the [Change Print Settings] dialog box, set a name in [Document Name] if required.
- 3** Click [Print Settings] sheet → set the required items.

If you want to unify the output size settings, select [Output Size Consistency] → select a paper size.

If you want to unify the page layout settings, select [Layout Consistency] → select a layout setting.



- 4** If you want to set where to start printing the next file from when combining files, select [Print Next Document from] → select an item.
- 5** If you want to specify detailed settings in the print settings screen of the driver, click [Details] → specify the relevant settings → click [OK].
- 6** In the [Change Print Settings] dialog box, click [OK].

Related Topics

- ▶ Canon PageComposer(P. 81)

▶ **Printing Files Together(P. 36)**

Editing Favorite Settings

Editing Favorite Settings	43
Registering Favorite Settings	44
Editing the Favorite Settings List	45

Editing Favorite Settings

- ▶ **Registering Favorite Settings(P. 44)**
- ▶ **Editing the Favorite Settings List(P. 45)**

Registering Favorite Settings

You can register frequently used settings as a profile.

1 Display the [Basic Settings], [Page Setup], [Finishing], [Paper Source], or [Quality] sheet
→ configure the settings you want to register.

2 Click [Add] to the right of [Profile].

3 In the [Add Profile] dialog box, set [Name] and [Icon].

Enter a comment in [Comment] if required.

4 Click [OK].

The new profile is added to [Profile]. You can apply registered print settings by simply selecting an item from [Profile].

Related Topics

🔗 [Common Settings for All Sheets\(P. 57\)](#)

Editing the Favorite Settings List

You can edit the [Profile] list, and import or export it to be used on other computers.

To Edit the [Profile] List

- 1** Display the [Basic Settings], [Page Setup], [Finishing], [Paper Source], or [Quality] sheet.
- 2** Click [Edit] to the right of [Profile].
- 3** In the [Edit Profile] dialog box, select the profile you want to edit from [Profile List] → set [Name] and [Icon].
Enter a comment in [Comment] if required.
If you want to delete a profile, select the profile from [Profile List] → click [Delete] → click [Yes].
- 4** Click [OK].

To Export a Profile

- 1** Display the [Basic Settings], [Page Setup], [Finishing], [Paper Source], or [Quality] sheet.
- 2** Click [Edit] to the right of [Profile].
- 3** In the [Edit Profile] dialog box, select the profile you want to export from [Profile List] → click [Export].
- 4** Specify the storage location and file name → click [Save] or [OK].
- 5** Click [OK].
The selected profile is saved as a "*.cfg" file.

To Import a Profile

- 1** Display the [Basic Settings], [Page Setup], [Finishing], [Paper Source], or [Quality] sheet.

- 2** Click [Edit] to the right of [Profile].
- 3** In the [Edit Profile] dialog box, click [Import] → select a profile file to be imported → click [Open].
- 4** Click [OK].

Related Topics

- ▶ [Common Settings for All Sheets\(P. 57\)](#)
- ▶ [Registering Favorite Settings\(P. 44\)](#)

Coordinating with the Device Functions

Coordinating with the Device Functions	48
About the Acquire Device Information Function	49
Setting Device Information	50
Setting the Authentication Function	52
Setting the User Name	54

Coordinating with the Device Functions

- ▶ **About the Acquire Device Information Function(P. 49)**
- ▶ **Setting Device Information(P. 50)**
- ▶ **Setting the Authentication Function(P. 52)**
- ▶ **Setting the User Name(P. 54)**

About the Acquire Device Information Function

Setting device information in the driver enables unique device printing functions to be used. The acquire device information function enables the following device information to be automatically set.

- Option configuration, including paper drawers, finishers, and duplex units, etc.
- Type and size of paper loaded in paper sources
- Color adjustment via calibration
- Authentication information for the department ID management function

The acquire device information function can be used when the device is connected to a network and the driver is installed using the installer. Normally, device information is automatically set during installation.

When using a local connection or when the printer is shared, the acquire device information function can be used by installing Canon Driver Information Assist Service with the installer.

Related Topics

- [Setting Device Information\(P. 50\)](#)

Setting Device Information

In the following cases, it is necessary to set the options of the device according to this procedure.

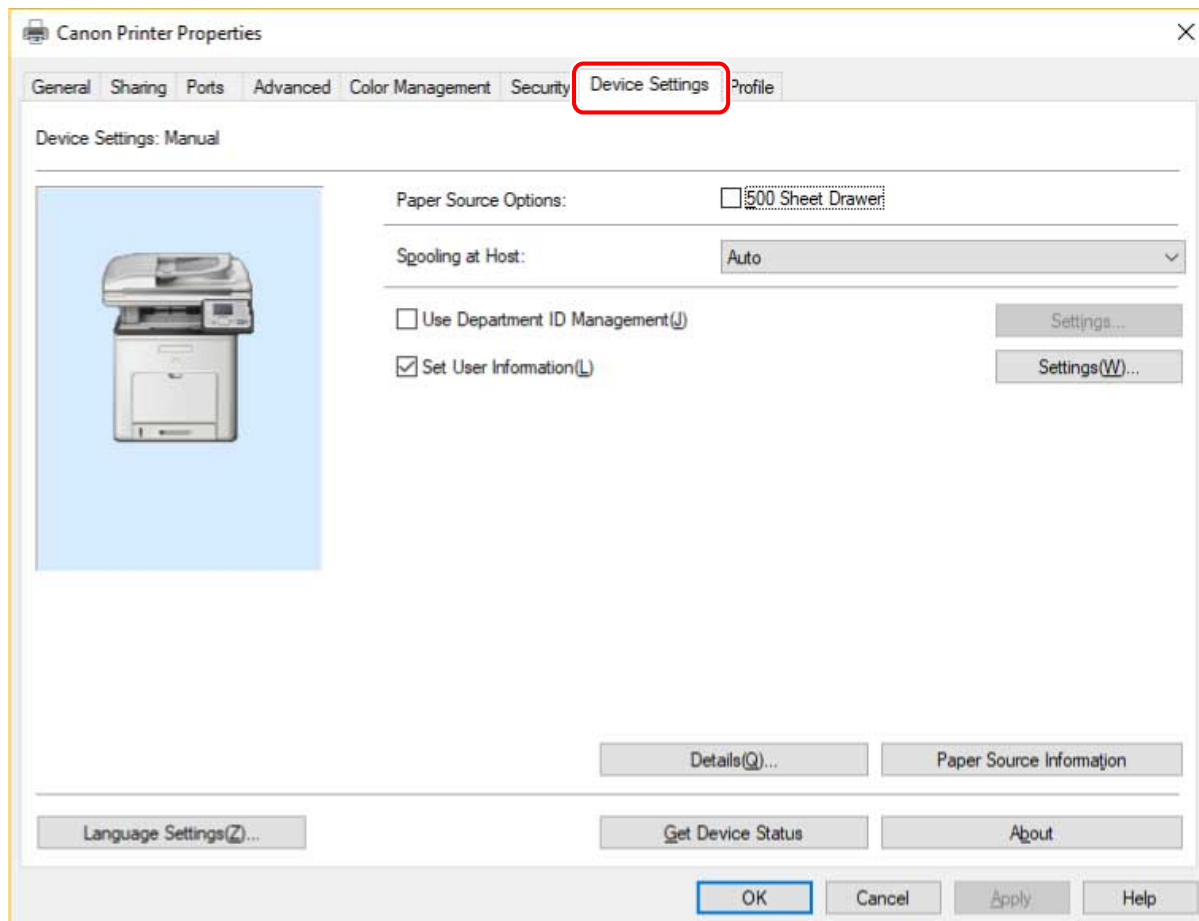
- The device information was not retrieved during installation.
- The device function and options are not set correctly in the [Device Settings] sheet.
- An option of the device has been changed.

Prerequisites

- Driver Installation
- Settings at the device
 - If the device is connected via a WSD port, [Use WSD Browsing] is already set to on.
 - If the device is connected by specifying a standard TCP/IP port, [Retrieve Printer Mngt. Information from Host] is already set to on.For details, refer to the manual of the device.
- When starting the computer, log on as a member of Administrators.

Procedures

- 1** Display [Devices and Printers] from the [Control Panel] of Windows.
- 2** Right-click the icon of the device to be set → select [Printer properties] from the displayed menu.
- 3** Display the [Device Settings] sheet.



4 Click [Get Device Status].

5 If the message "Get information from the device?" is displayed, click [Yes].

If the information has been retrieved, confirm the automatically set option configuration.

If the information is not retrieved, set the option configuration manually. Select the options attached to the device.

6 Click [Details] → set as required.

The items in [Details] are not set automatically. If necessary, set them manually.

7 In the [Device Settings] sheet, click [OK] or [Apply].

Related Topics

- ▶ [Device Settings] Sheet(P. 75)
- ▶ Cannot use the acquire device information function or authentication function(P. 91)

Setting the Authentication Function

You can manage printing by means of the department ID management function.



Prerequisites

- When starting the computer, log on as a member of Administrators.

Procedures

- 1 Display [Devices and Printers] from the [Control Panel] of Windows.**
- 2 Right-click the icon of the device you are going to set → select [Printer properties] from the displayed menu.**
If you are using the driver with multiple device models, select the model you are going to set after selecting [Printer properties].
- 3 Click the [Device Settings] sheet.**
- 4 Select [Use Department ID Management] → click [Settings].**
- 5 Select [Allow PIN Settings]/[Allow Password Settings] → enter [Department ID] and [PIN]/[Password].**
If you want to check that the authentication information set in the device and the entered content match, click [Verify].
- 6 Set the relevant settings → click [OK].**
- 7 Click [Apply] in the [Device Settings] sheet.**
If the [Confirm Department ID/PIN]/[Confirm Department ID/Password] dialog box is displayed when printing, confirm or set the authentication information.

Related Topics

▶ [Device Settings] Sheet(P. 75)

Setting the User Name

You can set a user name for print jobs and a PIN/password for secured printing. The set user name is displayed on the control panel of the device, and is printed as the user name for headers or footers.



Prerequisites

- When starting the computer, log on as a member of Administrators.

Procedures

- 1 Display [Devices and Printers] from the [Control Panel] of Windows.**
- 2 Right-click the icon of the device you are going to set → select [Printer properties] from the displayed menu.**
If you are using the driver with multiple device models, select the model you are going to set after selecting [Printer properties].
- 3 Click the [Device Settings] sheet.**
- 4 Select [Set User Information] → click [Settings].**
- 5 Enter the user information in [User Name] and [PIN for Secured Print]/[Password for Secured Print] → click [OK].**
If you want to change the default user name setting, click [Default Value Settings] → set [Name to Set for User Name] → click [OK].
If you want to prevent changes to user names: Click [Default Value Settings] → select [Do Not Allow User Name Changes] → click [OK].
- 6 Click [Apply] in the [Device Settings] sheet.**

Related Topics

- ▶ [Device Settings] Sheet(P. 75)

Settings List

Settings List	56
Common Settings for All Sheets	57
[Basic Settings] Sheet	60
[Page Setup] Sheet	62
[Finishing] Sheet	65
[Paper Source] Sheet	71
[Quality] Sheet	72
[Device Settings] Sheet	75
[Profile] Sheet	79
Canon PageComposer	81

Settings List

- ▶ **Common Settings for All Sheets(P. 57)**
- ▶ **[Basic Settings] Sheet(P. 60)**
- ▶ **[Page Setup] Sheet(P. 62)**
- ▶ **[Finishing] Sheet(P. 65)**
- ▶ **[Paper Source] Sheet(P. 71)**
- ▶ **[Quality] Sheet(P. 72)**
- ▶ **[Device Settings] Sheet(P. 75)**
- ▶ **[Profile] Sheet(P. 79)**
- ▶ **Canon PageComposer(P. 81)**

Common Settings for All Sheets

This explains what you can do from any one of the [Basic Settings], [Page Setup], [Finishing], [Paper Source], or [Quality] sheets.

[Profile]

Applies registered settings as selecting a profile. You can register frequently used settings as a profile.


[Add] > [Add Profile] Dialog Box

Registers the current print settings as a profile. Set [Name] and [Icon]. Enter a comment in [Comment] if required. If you want to check the current settings in a list, click [View Settings].

[Edit] > [Edit Profile] Dialog Box

Enables you to edit, import, and export profiles.

[Profile List]

Displays registered profiles as a list. You can change the order by selecting a profile and clicking []

(Move Up) or [] (Move Down).

[View Settings]

Displays the content of the selected profile as a list.

[Delete]

Deletes the selected profile.

[Name], [Icon], [Comment]

Displays the name, icon, and comment of the selected profile. You can edit the name, icon, and comment of user-registered profiles.

[Import]

Imports a profile saved as a "*.cfg" file and adds it to [Profile List].

[Export]

Exports the profile selected in [Profile List] and saves it as a "*.cfg" file.

[Apply Settings from Application]

Gives priority to the [Page Size], [Orientation], and [Copies] settings from the application over the driver settings.



NOTE

- Profiles with a red dot (●) next to them are pre-registered profiles and cannot be edited or deleted.

[Output Method]

Switches the method for outputting print data. You can save the data to the device, move a print job in the print queue ahead of other jobs and print it, etc.

[Print]

Performs normal printing.

[Secured Print]

Attaches a PIN/password to print data and saves it in the device. The saved data can be printed by entering the PIN/password in the control panel of the device.

[Details] > [Secured Print Details] Dialog Box

Enables you to set the user name and PIN/password.

[Confirm PIN]/[Confirm Password] Dialog Box

Enables you to confirm or set a name for the print data, user name, and PIN/password when printing.

[Edit and Preview]



Enables you to combine multiple files into one for printing. You can also preview the print data for confirmation and change the print settings. If you want to lock the setting, display the print settings screen from [Devices and Printers], select [Lock] to the right of [Edit and Preview]. This function is useful for restricting the output methods of clients in a shared printer environment.

[Details] > [Edit and Preview Details] Dialog Box

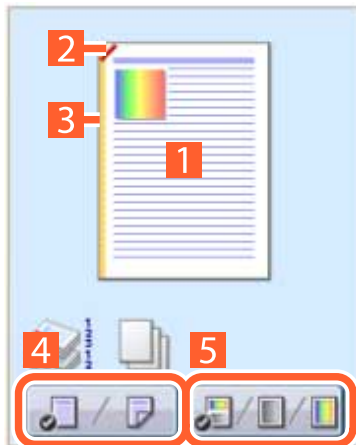
Enables you to set the output method after Edit and Preview.

[Settings Preview]

Displays the current settings in a preview. You can set basic print functions by clicking on the preview.

Click the icon ([]/[]) to the top left of the preview to switch between the print settings preview and the device preview.

[] Print Settings Preview



1 N on 1 printing

Arranges N pages of print data on each sheet of paper.

2 Stapling

Click where you want the page to be stapled.

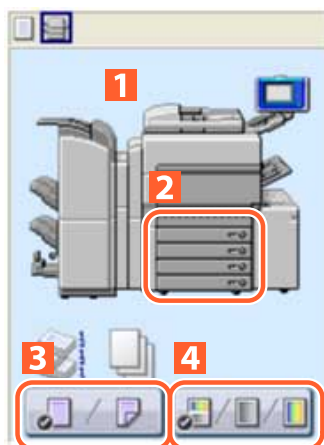
3 Binding location

Click the edge of the page where you want to set the binding location.

4 Switch between 1-sided printing and 2-sided printing

5 Switch between color and black and white printing (color printers only)

[] Device preview



1 Output methods/printing methods

Set the output method (collate/group) and printing method (2 on 1 etc.) from the right-click menu.

2 Paper sources

Verify the set page size and how many sheets are left. When you select [Paper Source] for [Select by] in the [Paper Source] sheet, you can also specify the paper source here.

3 Switch between 1-sided printing and 2-sided printing

4 Switch between color and black and white printing (color printers only)

 **NOTE**

- In the [Quality] sheet, the current settings for [Objective] is displayed in the preview.


[View Settings] > [View Settings] Dialog Box

Displays the current driver settings in a list.

[Language Settings] > [Language Settings] Dialog Box

Enables you to switch the display language.

[Display Printer Status Window]

Click [] to display the Printer Status Window.

The Printer Status Window enables you to check the printer status, execute the utility functions, and specify the settings for the printer unit, and so on.

For details on the Printer Status Window, refer to the help.

Related Topics

- ▶ **About the [Edit and Preview] Function(P. 35)**
- ▶ **Printing Files Together(P. 36)**
- ▶ **Attaching Encryption When Printing(P. 23)**
- ▶ **Registering Favorite Settings(P. 44)**
- ▶ **Editing the Favorite Settings List(P. 45)**

[Basic Settings] Sheet

You can set basic print functions.

[Page Size]

Displays the paper size of the print data prepared in the application.

[Output Size]

Specifies the actual paper size to be printed on. If you select a size that differs from [Page Size], the print data is enlarged or reduced to fit the set page size when printing.

[Copies]

Specifies the number of copies to be printed.

[Orientation]

Specifies the orientation of print data.

[Page Layout]

Specifies how many pages to print on each sheet of paper.

[Manual Scaling]

Specifies an enlargement or reduction ratio for printing.

[Use 1 on 1 for Single-Page Data]

Prints single page data over one sheet when printing multiple pages on each sheet.

[1-sided/2-sided/Booklet Printing]

Specifies a method for outputting print data.

[Booklet] > [Detailed Settings for Booklet] Dialog Box

Enables you to set detailed settings for booklet printing such as gutters.

[Booklet Printing Method]

Switches the booklet printing method. When creating a booklet in multiple sets, select [Divide into Sets] and then specify how many sheets are in each set in [Sheets per Set].

[Book Opening]

Specifies the direction the booklet opens.

[Specify Booklet Gutter]

Specifies the gutter width.

[Binding Location]

Sets the edge of the paper to bind.

If you change [Orientation] in the [Basic Settings]/[Page Setup] sheet, [Binding Location] is changed to the left or top. The long edge/short edge positional relationship is maintained.

[Gutter] > [Gutter Settings] Dialog Box

Enables you to set the gutter width.

[Staple/Collate/Group]/[Collate/Group]

Sets the order of pages and whether to staple the pages when printing multiple copies.



Collate



Group



Staple

[Off]

Follows the application setting.

[Collate]

Outputs the specified number of copies in page order.

[Group]

Outputs the specified number of copies with all pages having the same page number grouped together.

[Staple & Collate]

Outputs and staples together the specified number of copies one at a time.

[Staple Position] > [Staple Position] Dialog Box

Enables you to set the position of the staple(s).

[Color Mode]

Switches between printing in color or in black-and-white. To detect automatically whether each page should be printed in color or in black-and-white, select [Auto [Color/B&W]].

[Restore Defaults]

Returns all the print settings of the driver to their default values.

Related Topics

- ▶ **Common Settings for All Sheets(P. 57)**
- ▶ **Scaling(P. 17)**
- ▶ **Poster Printing(P. 19)**
- ▶ **Booklet Printing(P. 27)**
- ▶ **Driver settings cannot be set(P. 86)**
- ▶ **Print results are unsatisfactory(P. 87)**

[Page Setup] Sheet

You can set the page size, print orientation, layout options, etc.

[Page Size]

Displays the paper size of the print data prepared in the application.

[Output Size]

Specifies the actual paper size to be printed on. If you select a size that differs from [Page Size], the print data is enlarged or reduced to fit the set page size when printing.

[Copies]

Specifies the number of copies to be printed.

[Orientation]

Specifies the orientation of print data.

[Page Layout]

Specifies how many pages to print on each sheet of paper.

[Poster Details] > [Poster Details] Dialog Box

Enables you to set detailed settings when printing a poster.

The poster printing function enlarges the print data of one page and prints it over multiple sheets of paper. When the output sheets are joined together, they form a large print like a poster.

[Print Margin Borders]

Prints borders with other sheets as a guide to paste sheets together.

[Set Margins for Cutting/Pasting]

Sets margins for cutting or pasting. Select a width from [Margin Width]. When printing marks indicating the cutout or margin section(s), select [Print Marks for Alignment].

[Pages to Print]

Specifies the page(s) to print.

[Page Order]

Specifies the page order to print.

[Manual Scaling]

Specifies an enlargement or reduction ratio for printing.

[Use 1 on 1 for Single-Page Data]

When printing multiple pages on each sheet, prints single page data over one sheet.

[Paper Type]

Specifies the paper to print on by paper type.

[Watermark]

Superimposes and prints semi-transparent characters such as [TOP SECRET] or [DRAFT] over print data.

[Edit Watermark] > [Edit Watermark] Dialog Box

Enables you to create and add a new watermark.

[Watermark List]

Displays registered watermarks as a list. When selecting a watermark, a preview is displayed to the left.

[Add]

Adds a new watermark to [Watermark List] as [Untitled]. You can set the name of the watermark in [Name] and its settings in the [Attributes], [Alignment], and [Print Style] sheets.

[Delete]

Deletes the selected watermark.

[Name]

Displays the name of the watermark selected in [Watermark List]. When adding a new watermark, enter the name of the watermark.

[Attributes] Sheet

Specifies the settings relating to the text in a watermark.

[Alignment] Sheet

[Position] specifies the position of the watermark as coordinates relative to the center (0) of the document. [Tilt] sets the angle of the watermark.

[Print Style] Sheet

[Watermark Border] sets whether a frame is printed around the text. [Watermark Position] sets the overlap position with respect to the print data. When printing the watermark on only the first page, select [Print on First Page Only].

[Custom Paper Size] > [Custom Paper Size Settings] Dialog Box

Enables you to register a desired paper size and use it for printing. Papers with a red dot (●) next to them are standard paper sizes and cannot be edited or deleted.

[Page Options] > [Page Options] Dialog Box

Specifies layout options such as borders, date, page numbers, etc.

[Format Settings] > [Format Settings] Dialog Box

Enables you to configure font settings when printing the date, user name, and/or page numbers.

[Restore Defaults]

Returns all the settings to their default values.

Related Topics

▶ **Common Settings for All Sheets(P. 57)**

- ▶ **Scaling(P. 17)**
- ▶ **Watermark Printing(P. 18)**
- ▶ **Poster Printing(P. 19)**
- ▶ **Registering Custom Paper Sizes(P. 31)**
- ▶ **Driver settings cannot be set(P. 86)**
- ▶ **Print results are unsatisfactory(P. 87)**

[Finishing] Sheet

You can configure settings relating to layout printing and finishing such as sorting, collating, stapling, etc.

[Print Style]

Specifies a method for outputting print data. According to what you select for [Print Style], the displayed settings change as follows.

- ▶ When [1-sided Printing] or [2-sided Printing] is selected(P. 65)
- ▶ When [Booklet Printing] is selected(P. 66)

When [1-sided Printing] or [2-sided Printing] is selected

[Print with Mixed Paper Sizes/Orientations]/[Print in Different Orientations]

Enables you to print data in which the size and orientation differ from page to page.

[Details] > [Detailed Settings] Dialog Box

Enables you to set the combination of sizes and alignment method of pages.

[Binding Location]

Sets the edge of the paper to bind.

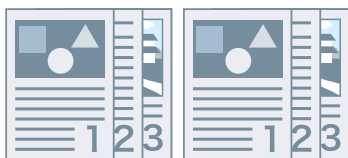
If you change [Orientation] in the [Basic Settings]/[Page Setup] sheet, [Binding Location] is changed to the left or top. The long edge/short edge positional relationship is maintained.

[Gutter] > [Gutter Settings] Dialog Box

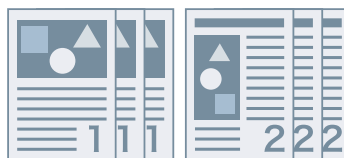
Enables you to set the gutter width.

[Finishing]

Sets the order of pages and whether to staple the pages when printing multiple copies.



Collate



Group



Offset



Rotate



Staple

[Off]

Follows the application setting.

[Collate]

Outputs the specified number of copies in page order.

[Group]

Outputs the specified number of copies with all pages having the same page number grouped together.

[Staple & Collate]

Outputs and staples together the specified number of copies one at a time.

[Staple Position] > [Staple Position] Dialog Box

Enables you to set the position of the staple(s).

[Offset]

Outputs each copy separately.

[Rotate]

Outputs each copy at a 90 degree angle relative to the copy before and after it.

[Paper Output]

Specifies a printed paper output destination.

When [Booklet Printing] is selected

[Booklet] > [Detailed Settings for Booklet] Dialog Box

Enables you to set detailed settings for booklet printing such as gutters.

[Booklet Printing Method]

Switches the booklet printing method. When creating a booklet in multiple sets, select [Divide into Sets] and then specify how many sheets are in each set in [Sheets per Set].

[Book Opening]

Specifies the direction in which the booklet opens.

[Specify Booklet Gutter]

Specifies the gutter width.

[Offset]

Outputs each copy separately.

[Print on the Other Side]

If you want to print on both sides of paper fed manually into the stack bypass or multi-purpose tray, select this function to print on the other side of the paper.

[Feed A5 Horizontally]

Feeds A5 sizes horizontally when printing.

[Advanced Settings] > [Advanced Settings] Dialog Box

Enables you to set detailed finishing settings. Select the setting item you want to specify in [List of Settings], and select a setting from the drop-down list.

[Display in Printer as]

Specifies a name to be displayed in the device control panel while your print job is being printed. This is useful if multiple users share a printer.

[Print Banner Page]

Prints a banner page showing the user's login name, the time the print job was printed, and the document file name.

[Details] > [Banner Page Print Details] Dialog Box

Enables you to set the paper source or paper type of a banner page.

[Document Name Settings]

Sets the document name displayed on the control panel of the device and in the Remote UI.

[Details] > [Document Name Setting Details] Dialog Box

Enables you to enter the default value for the document name. If a default value is not specified, the file name of the printed data is used as the document name.

[Expand Print Region and Print]

Expands the print area when printing.

[Details] > [Print Region Details] Dialog Box

Enables you to adjust margins.

[Detect Paper Size]

Checks the print data and paper size in the paper source tray, and displays a message on the Printer Status Window if they do not match. This function is useful if you want to continue printing with a different paper size.

[Rotate Print Data 180 Degrees]

This function is useful when you want to print on tab paper, envelopes, etc. that need to be fed in a specific direction.

[Line Refinement]

Thickens thin lines when printing. This function is useful when printing small text and barcodes. This setting may be disabled when the resolution is set to 600 dpi.

[Skip Blank Pages Mode]

Enables you to set whether pages that contain no print data are output as blank pages.

[Auto 1]

Skips blank pages. When performing 2-sided printing, page layout is given priority.

[Auto 2]

Skips blank pages. Because priority is given to skipping blank pages when performing 2-sided printing, the page layout may be incorrect.

[Off]

Outputs blank pages.

[Rotate Pages for Layout]

Rotates the pages according to the orientation of the first page and aligns the size of each page when performing N on 1 printing or booklet printing of print data with pages whose orientation varies.

[Details] > [Rotate Pages for Layout Details] Dialog Box

Enables you to set a rotation direction.

[Auto]

Prints with the second page onward automatically rotated 90 degrees to the left or 90 degrees to the right according to the orientation of the first page.

[Right 90 Degrees]

Prints with pages whose orientation differs from the first page rotated 90 degrees to the right.

[Left 90 Degrees]

Prints with pages whose orientation differs from the first page rotated 90 degrees to the left.

[Image Refinement]

Enables you to set whether to use smoothing processing, which adjusts the contours of text and diagrams to make them smoother. If you select [Printer Default], the default setting of the device is used.

[Image Special Process]

If bold characters or centers of lines are missing from printed data, select [Level 1]. If this does not solve the problem, select [Level 2].

[Special Print Adjustment], [Special Print Adjustment A], [Special Print Adjustment B], [Special Print Adjustment C], [Special Print Adjustment V], [Blurry Image Correction], [Quiet Mode]

If lines appear in the printed output, you can adjust the print settings to compensate.

[Special Print Adjustment]/[Special Print Adjustment A]/[Blurry Image Correction] thins out the dots when printing. Try [Mode 1] first.

[Special Print Adjustment B] strengthens toner fixing. Try [Mode 1] first.

[Special Print Adjustment C]/[Quiet Mode] reduces the print speed.

[Special Print Adjustment V] solves fixing problems such as curling when printing with plain paper.

Using the [Special Print Adjustment]/[Special Print Adjustment A]/[Blurry Image Correction] function may result in thinner print density and rough print results.

[Special Smoothing Mode]

Smooths the contours of text, lines, and diagrams, and internal gradations.

[Printer Default]

Uses the default setting of the device.

[Mode 1]

Prints the edges of dark colored text, lines, and diagrams smoothly. Normally, you should print with the [Mode 1] setting.

[Mode 2]

Prints not only the edges, but also the interior halftones of diagrams smoothly. If the interior halftones of dark colored large text and broad lines exhibit color shift and do not print smoothly with the [Mode 1] setting, try printing with [Mode 2].

[Mode 3]

Prints dark colored text and lines smoothly on halftone backgrounds. If the interior halftones of dark colored large text and broad lines exhibit color shift, and the edges of light colored text and lines are uneven and do not print smoothly with the [Mode 1] setting, try printing with [Mode 3].

[Mode 4]

Prints the edges of a variety of objects smoothly. If the edges of light colored large text and broad lines are uneven and do not print smoothly with the [Mode 1] setting, try printing with [Mode 4].

[Mode 5]

Prints images and halftone objects evenly. If the color bands of images, diagrams, and gradations are uneven, and shading patterns do not print uniformly with the [Mode 1] setting, try printing with [Mode 5].

[Mode 6]

Prints entire objects smoothly. If there is halftone shift and unevenness throughout images with the [Mode 1] setting, try printing with [Mode 6].

[Wrinkle Adjustment]

If wrinkling occurs, causing paper jams, use this function to alleviate the wrinkling. Try [Mode 1] first. Depending on the printer model, [Mode 1] corrects wrinkles when printing with envelopes, and [Mode 2] when printing with paper whose edges are moist.

[EMF Spooling]

Spools print data in EMF format. When printing from an application, this shortens the time taken for the application to send the data to the printer.

When spooling in EMF format, problems such as the printed result differing from the image shown on the monitor, and more time being required for printing than normal, may occur depending on the application being used. If such problems occur, change the setting for [EMF Spooling] to [Off].

[Invalidate Passthrough]

Disables the passthrough function of the printer driver. If you cannot print from an application that sends print data directly to the device, disabling passthrough may make printing possible.

[Print Last Page in 1-sided Mode When 2-sided Printing is Set]

When using 2-sided printing to output print data containing an odd number of pages, this function prints the last page in 1-sided print mode to reduce the print time.

[Special Fine Line Processing]

Corrects fine lines when printing so that they are thicker.

[Off]

Prints without correcting.

[On]

Corrects lines of less than two dots in width to a thickness of two dots when printing.

[Barcode Adjustment Mode]/[Special Settings 1]

In cases where barcode printing is unsatisfactory, such as when a barcode on a printed article is unreadable, this function adjusts the thickness of the printed lines.

[Special Print Mode]

[Off]

Prints without using a special print mode.

[Special Settings 1]

Adjusts the thickness and density of lines when there is a problem with barcode printing, such as when the barcode cannot be read.

[Special Settings 2]

Prevents white lines around the edge portions of text and images when printing documents with a high variation in density.

[Special Settings 3]

Prints quietly by reducing the print speed.

[Printing Start Position Settings]

Shifts the starting point for printing data in the long edge (upward) and short edge (rightward) directions. This function is useful for adjusting margins when the widths of the top and bottom margins and right and left margins differ, and for hiding the header information of faxes.

[Details] > [Printing Start Position Details] Dialog Box

Enables you to specify print starting positions.

[Prevent Postcard Fogging]

If the printed image is entirely or partially fogged when printing to postcards, select [Mode 1]. If this does not solve the problem, you can select [Mode 2], but this may affect the printed image itself.

[Restore Defaults]

Returns all the settings to their default values.

Related Topics

- ▶ **Common Settings for All Sheets(P. 57)**
- ▶ **Booklet Printing(P. 27)**

- ▶ **Driver settings cannot be set(P. 86)**
- ▶ **Print results are unsatisfactory(P. 87)**
- ▶ **Printing takes a long time(P. 89)**

[Paper Source] Sheet

You can set the paper type and paper source.

[Select by]

Selects whether to specify the paper to print on by paper source or by paper type.

[Paper Selection]

Specifies the paper source method depending on the page.

[Paper Source]

Specifies the paper to print on by paper source.

[Paper Type]

Specifies the paper to print on by paper type.

[Cover Sheets]/[Interleaf Sheets]

Specifies the paper source or paper type used for cover sheets to insert between transparencies.

[Transparencies]

Specifies the paper source or paper type used for transparencies.

[Paper Source Information] > [Paper Source Information] Dialog Box

Displays information about the paper set in the paper sources. To acquire the paper source information from the device, click [Get Paper Source Information].

[Feed Custom Paper Horizontally]

Feeds custom paper sizes horizontally when printing.

[Print on the Other Side]

If you want to print on both sides of paper fed manually into the stack bypass or multi-purpose tray, select this function to print on the other side of the paper.

[Restore Defaults]

Returns all the settings to their default values.

Related Topics

🔍 [Common Settings for All Sheets\(P. 57\)](#)

[Quality] Sheet

You can set detailed print quality settings.

[Objective]

Enables you to set a print quality mode that matches the purpose of the print data by simply selecting a setting.

[Advanced Settings] > [Advanced Settings] Dialog Box

Enables you to set print quality details such as resolution, gradation, toner amount, etc.

[Rendering Rate]

Sets the image rasterizing method for print data.

[1 BPP]

Replaces all parts other than white with black for characters and fine lines, and prints at high speed.

[1 BPP [Enhanced]]

Expresses gradation as halftones and prints at high speed. Prints characters and thin lines in black.

[24 BPP]

Takes longer to print than [1 BPP [Enhanced]], but prints higher quality.

[Resolution]

Sets the print resolution.

[Gradation]

Sets the gradation method. [High 2] uses finer gradations than [High 1] to smooth gradations.

[Halftones]

Sets dither patterns for representing halftones (areas between dark areas and light areas).

[Resolution]

Gives priority to resolution and prints contours smoothly.

[Gradation]

Gives priority to gradation and prints gradations smoothly.

[Error Diffusion]

Prints small characters and thin lines finely.

[Pattern 1] to [Pattern 6]

Applies the following halftone processing settings independently to text, graphic, and image data.

Where there are 6 patterns:

	Text	Graphics	Images
Pattern 1	Resolution	Resolution	Gradation
Pattern 2	Resolution	Gradation	Gradation
Pattern 3	Resolution	Gradation	Resolution
Pattern 4	Gradation	Resolution	Resolution
Pattern 5	Gradation	Resolution	Gradation
Pattern 6	Gradation	Gradation	Resolution

[None [Solid]]

Prints non-white parts such as text and lines in solid black.

[Toner Save]/[Draft Mode]

Thins out the print data to save toner.

[Toner Density]

Adjusts the toner density.

[Details] > [Toner Density Details] Dialog Box

Enables you to adjust the density of each color.

[Toner Density Fine Adjustment]

Adjusts the toner density by density range. Select [On] and click [Details] to adjust the toner density for each density range.

[Advanced Smoothing]

Smooths the contours of text, lines, and images. [Smooth 2] performs stronger smoothing processing than [Smooth 1].

[Density Fine Adjustment]

Adjusts the print density for small-sized text and thin lines. This function is useful for correcting "cracks" in text and lines.

[Gray Compensation]

Prints black and gray data reliably in black and gray.

[Output Adjustment Mode]

Converts the resolution. Select [Off] to prioritize speed when printing. Select [On] to prioritize image quality when printing.

[Grayscale Conversion]

Sets the method for converting color print data to grayscale.

[Use Driver Grayscale Conversion When B&W Printing]

Gives the driver grayscale conversion priority over the conversion of the application when black-and-white printing.

[Correction Processing for Reduced Graphic Details]

Performs correction to maintain print quality when reducing print data.

[CanoFine]

Adjusts the contrast and color balance of images to print distinct images.

[Details] > [CanoFine Details] Dialog Box

Enables you to set the print processing method using the [CanoFine] function.

[Color Mode]

Switches between printing in color or in black-and-white. To detect automatically whether each page should be printed in color or in black-and-white, select [Auto [Color/B&W]].

[Manual Color Settings]/[Manual Grayscale Settings] > [Color Settings]/[Grayscale Settings] Dialog Box

Enables you to adjust color, brightness, contrast, and color matching.

[Color Adjustment]/[Grayscale Adjustment] Sheet**[Original]/[Preview]**

Enables you to check the adjusted image.

[Increase (Color)]

Adjusts the color. Click and drag the image toward the color(s) you want to strengthen.

[Brightness]

Adjusts the brightness. Use the side bar to lighten or darken the image.

[Contrast]

Adjusts the contrast. Use the side bar to increase or decrease the contrast of the image.

[Restore Defaults]

Returns all the settings to their default values.

[Matching] Sheet

[Matching Mode]

Sets whether to perform color matching on the device side or the driver side, or whether color matching is not performed by the driver.

[Application Color Matching Priority]

Gives priority over the application settings when performing matching processing.

[Matching Method]

Sets what factor is prioritized when matching.

[Monitor Profile]

Enables you to select the setting suitable for your monitor when [Driver Matching Mode] is selected for [Matching Mode]. If several gamma values are provided for one option, to obtain better results select the higher gamma value if the printed image is lighter than that of the monitor.

[Gamma]

Enables you to adjust gamma when [Gamma Adjustment] is selected for [Matching Mode].

[About]

Displays the version of the driver.

[Restore Defaults]

Returns all the settings to their default values.

Related Topics

- ▶ **Common Settings for All Sheets(P. 57)**
- ▶ **Print results are too dark or too bright(P. 90)**

[Device Settings] Sheet

You can configure device option settings and administrator settings.

Also, if confirmation of authentication information is set in [Use Department ID Management] in this sheet, a confirmation dialog box is displayed when printing.

Here, the content of the [Device Settings] sheet and the dialog box for confirming authentication information are explained.

Descriptions of Settings

[Paper Source Options]/[Number of Drawers]/[Output Options]/[Duplex Unit]

Enable the options attached to the device.

Click [Get Device Status] to acquire the device information and reflect it in the settings.

[Spooling at Host]

Sets whether processing of the print data is performed at the host (computer) or at the device. If you select [Auto], processing is performed at the device when it is possible using only the device functions, increasing the print speed.

[Use Department ID Management]

Performs print management by department ID and PIN/password.

[Settings] > [Department ID/PIN Settings]/[Department ID/Password Settings] Dialog Box

Enables you to configure the detailed settings for the department ID management function.

[Allow PIN Settings]/[Allow Password Settings]

Enables you to set the PIN/password in this dialog box. In a shared printer environment, deselect this item at the server if you want to disable PIN or password settings at the client computers.

[Department ID]

Sets the department ID which has been set at the device.

[PIN]/[Password]

Sets a PIN/password for the department ID management. If the PIN/password has not been set at the device, leave this box blank.

[Verify]

Verifies whether the entered department ID and PIN/password match those set at the device.

[Confirm Department ID/PIN When Printing]

Displays the [Confirm Department ID/PIN]/[Confirm Department ID/Password] dialog box for confirming or setting the department ID and the PIN/password when printing.

[Authenticate Department ID/PIN at Device]

Performs authentication of the department ID and PIN/password at the device.

[Set User Information]

Enables you to set a user name to be used for print jobs and the PIN used in secured printing.

[Allow Use of Secured Print]

Enables [Secured Print] as an option for [Output Method].

[Settings] > [User Information Settings] Dialog Box**[User Name]**

Sets a user name to be used for print jobs.

[PIN for Secured Print]/[Password for Secured Print]

Sets a PIN/password for secured printing.

[Always Confirm User Information When Performing Secured Print]

Displays the [Confirm PIN]/[Confirm Password] dialog box for confirming or setting a name for the print data, user name, and PIN/password when performing secured printing.

[Confirm User Name When Printing]

Displays the [Confirm User Name] dialog box for confirming or setting a user name when printing.

[Display Previously Entered Information When Confirming]

Displays confirmation dialog boxes with the user name and PIN/password you entered last time automatically entered.

[User Name Management]/[Default Value Settings] > [User Name Management]/[Default Value Settings] Dialog Box

Enables you to configure the default settings for the user name and PIN/password.

[Name to Set for User Name]

Enables you to specify the Windows logon name, computer name, or any desired name for the user name.

[PIN for Secured Print]/[Password for Secured Print]

Set a PIN/password for secured printing.

[Always Confirm User Information When Performing Secured Print]

Displays the [Confirm PIN]/[Confirm Password] dialog box for confirming or setting a name for the print data, user name, and PIN/password when performing secured printing.

[Confirm User Name When Printing]

Displays the [Confirm User Name] dialog box for confirming or setting a user name when printing.

[Do Not Allow User Name Changes]

Prohibits changes to the user name in the [User Information Settings] dialog box.

[Fix [User Information Settings]-[Always Confirm User Information When Performing Secured Print] Setting]

Fixes the [Always Confirm User Information When Performing Secured Print] setting to the setting set in the [Default Value Settings] dialog box.

[Fix [User Information Settings]-[Confirm User Name When Printing] Setting]

Fixes the [Confirm User Name When Printing] setting to the setting set in the [User Name Management] or [Default Value Settings] dialog box.

[Details] > [Detailed Settings] Dialog Box

Configure detailed driver settings such as custom paper details, job names for print data, etc.

[Function] > [Device Function Settings] Dialog Box

Displays the controller function ID and function version of the device. You can also set a name for the device.

[Form to Tray Assignment] > [Form to Tray Assignment] Dialog Box

Enables you to set the paper size and paper type set in each paper source.

[Paper Source Information] > [Paper Source Information] Dialog Box

Displays information about the paper sources.

[Language Settings] > [Language Settings] Dialog Box

Enables you to switch the display language.

[Get Device Status]

Acquires information from the device and applies it to the following settings.

- Device Option Settings ([Paper Source Options], [Number of Drawers], [Output Options], [Duplex Unit])
- [Use Department ID Management]
- [Paper Source Information]

[About]

Displays the version of the driver.

**IMPORTANT**

- If you set a paper source that is not installed in the device, paper will be supplied from the device's priority paper source.
- If the paper source you have specified and the paper size/type do not match, an error will occur.
- If you specify the finishing functions for a device that does not have those functions, printing will be performed without those functions. For example, if you specify 2-sided printing for a device that does not support 2-sided printing, the data will be printed on one side of the paper.
- If you set the department ID management function when printing for a device that does not have this function, an error will occur.
- If you enable [Perform Processing with Print Processor] in the [Detailed Settings] dialog box, the usable functions are restricted. For details, refer to the Readme file.

Authentication Information Confirmation Dialog Box**[Confirm Department ID/PIN]/[Confirm Department ID/Password] Dialog Box****[Department ID]**

Set the department ID set at the device.

[PIN]/[Password]

Set a PIN/password for department ID management. If a PIN/password is not set at the device, this is blank.



Related Topics

- ▶ [Setting Device Information\(P. 50\)](#)
- ▶ [Setting the Authentication Function\(P. 52\)](#)
- ▶ [Setting the User Name\(P. 54\)](#)
- ▶ [Driver settings cannot be set\(P. 86\)](#)
- ▶ [Cannot use the acquire device information function or authentication function\(P. 91\)](#)

[Profile] Sheet

You can edit, import, and export profiles. If you edit profiles on the server side in a shared printer environment, the changes are reflected in the client profiles.

[Profile List]

Displays registered profiles as a list. You can change the order by selecting a profile and clicking [] (Move Up) or [] (Move Down).



NOTE

- Profiles with a red dot (●) next to them are pre-registered profiles and cannot be edited or deleted.

[View Settings]

Displays the content of the selected profile as a list.

[Add]/[Edit] > [Add/Edit Profile] Dialog Box

Enables you to add a new profile or edit the settings of a user-registered profile. Set [Name] and [Icon]. Enter a comment in [Comment] if required. Switch sheets and configure relevant settings. If you want to check the current settings in a list, click [View Settings].

[Edit]

Enables you to edit the settings of a user-registered profile.

[Delete]

Deletes the selected profile.

[Name], [Comment]

Displays the name and comment of the selected profile. You can edit the name and comment of user-registered profiles.

[Import]

Imports a profile saved as a "*.cfg" file and adds it to [Profile List].

[Export]

Exports the profile selected in [Profile List] and saves it as a "*.cfg" file.

[Define Document Property]

Allows settings in the print settings screen of the driver. This function is useful when restricting usage of the print settings in client computers in a shared printer environment.

If you deselect the following settings at the server, the settings of all client computers are fixed at those configured at the server.

[Allow Profile Selection]

Enables you to select profiles in the print settings screen.

[Allow Editing of Settings]/[Allow Setting Edition]

Enables you to configure print settings other than selecting profiles in the print settings screen. This setting can be selected when [Allow Profile Selection] is selected.

Related Topics

- ▶ [Driver settings cannot be set\(P. 86\)](#)

Canon PageComposer

You can combine multiple files created with different applications into one file for printing.

The Canon PageComposer main screen opens when you print using the [Edit and Preview] function of the driver.

[File] Menu

[Print]/[] (Print)

Prints the selected file(s).

[Print Sample]/[] (Print Sample)

Performs proof printing of the selected file(s).

[Print Preview]/[] (Print Preview)

Displays a print preview of the selected file.

[Exit]

Closes the Canon PageComposer main screen.

[Edit] Menu

[Delete]/[] (Delete Document)

Deletes the selected file(s).

[Duplicate]/[] (Duplicate Document)

Duplicates the selected file(s).

[Combine]/[] (Combine Documents) > [Combine] Dialog Box

Combines the selected multiple files into one, and enables you to specify a name and configure the settings of the combined file.

Displays the current settings for each page as thumbnail images.

[Document Name]

Sets the name of the combined file.

[Delete]

Deletes the selected page.

[Print Preview]

Displays a print preview of the selected page.

[Document List] Sheet

Changes the order of files in the combined file or deletes a file from the combined file.

[Print Settings] Sheet

Changes the print settings of the combined file. When unifying the output size settings, select [Output Size Consistency]. When unifying the page layout settings, select [Layout Consistency].

If you want to specify detailed settings in the print settings screen of the driver, click [Details].

[Separate]/[] (Separate Documents)

Separates the selected file you have combined.

[Change Print Settings]/[] (Change Print Settings) > [Change Print Settings] Dialog Box

Changes the name and settings of the selected file.

Displays the current settings for each page as thumbnail images.

[Document Name]

Sets the name of the file.

[Delete]

Deletes the selected page.

[Print Preview]

Displays a print preview of the selected page.

[Document List] Sheet

Changes the order of files when combining multiple files or deletes a file from the combined file.

[Print Settings] Sheet

Changes the print settings of the file.

[Copies]

Specifies the number of copies to be printed.

[Print Style]

Specifies a method for outputting print data.

[Staple]

Outputs the pages stapled together.

[Saddle Stitch]

Prints a booklet folded in half and stapled in the middle.

[Output Size Consistency]

Enables you to use the paper of the same size selected from the drop-down list box for a combined file consisting of files with different page sizes.

[Layout Consistency]

Enables you to set a single layout selected from the drop-down list box for a combined file consisting of files with different layout.

[Page Order]

Specifies the page order to print.

[Print Next Document from]

Enables you to set where to start printing the next file from when combining files.

[Details]

Enables you to specify detailed settings in the print settings screen of the driver.

[Select All]

Selects all files in the list.

[Move to] Menu

[Top]/[Previous]/[Next]/[Last]



Allows you to change the order by moving the selected file(s).

[Help] Menu

[Help]

Displays the online help.

[About]

Displays the version of Canon PageComposer.

Related Topics

- ▶ **About the [Edit and Preview] Function(P. 35)**
- ▶ **Printing Files Together(P. 36)**
- ▶ **Checking the Print Preview(P. 38)**
- ▶ **Changing the Print Settings of the Combined File(P. 40)**

Troubleshooting

Troubleshooting	85
Driver settings cannot be set	86
Print results are unsatisfactory	87
Printing takes a long time	89
Print results are too dark or too bright	90
Cannot use the acquire device information function or authentication function	91

Troubleshooting

This explains solutions to common problems.

- ▶ **Driver settings cannot be set(P. 86)**
- ▶ **Print results are unsatisfactory(P. 87)**
- ▶ **Printing takes a long time(P. 89)**
- ▶ **Print results are too dark or too bright(P. 90)**
- ▶ **Cannot use the acquire device information function or authentication function(P. 91)**

Driver settings cannot be set

Page size, orientation, paper selection settings are not valid

Cause

Depending on the application you are using, the settings corresponding to these in the application are given priority over the driver settings.

Remedy

Configure these settings in the application.

The [Device Settings] and [Profile] sheet can be displayed, but settings are unavailable

Cause

Your account does not have full control permission for the printer.

Remedy

Logon to the computer as a member of Administrators. Contact your system administrator for further information.

Related Topics

- ▶ [Printing from a Computer\(P. 14\)](#)

Print results are unsatisfactory

Page layout is not correct

If the printing area on the page is not positioned correctly, or if part of the printed area is missing, check the following.

Cause 1.

Print data is not set in the printable area.

Remedy

Confirm the printable area of the device, and correct the print data in the application you are using.

Cause 2.

The [Output Size] settings in the [Basic Settings] or [Page Setup] sheet does not match the actual size of the paper loaded in the device.

Remedy

Confirm that the [Output Size] setting matches the size of the paper in the device.

Cause 3.

The magnification ratio is not set properly for the print data.

Remedy

Change the settings in the [Basic Settings] or [Page Setup] sheet > [Manual Scaling] > [Scaling].

Cause 4.

The gutter setting is too large, so that there is not enough space on the page for the printout.

Remedy

Change the settings in the [Finishing] sheet > [Gutter].

Part of the printout does not match what you see on the screen

Cause

The application uses EMF format data which cannot be processed by page printers.

Remedy

In the [Finishing] sheet, click [Advanced Settings], and then select [Off] from [EMF Spooling].

Related Topics

- ▶ [\[Basic Settings\] Sheet\(P. 60\)](#)
- ▶ [\[Page Setup\] Sheet\(P. 62\)](#)
- ▶ [\[Finishing\] Sheet\(P. 65\)](#)

Printing takes a long time

Cause

The application uses EMF format data which cannot be processed by page printers.

Remedy

In the [Finishing] sheet, click [Advanced Settings], and then select [Off] from [EMF Spooling].

Related Topics

▶ [\[Finishing\] Sheet\(P. 65\)](#)

Print results are too dark or too bright

Cause

The colors on the computer monitor and in the print results differ because their color representation methods differ.

Remedy

Change the color settings according to the following procedure.

(1) Display the [Quality] sheet.

(2) Select [Manual Color Settings] or [Manual Grayscale Settings] → click [Color Settings]/[Grayscale Settings].

(3) In the [Color Adjustment]/[Grayscale Adjustment] sheet, adjust the brightness with the slide bar.

Related Topics

▶ [Quality] Sheet(P. 72)

Cannot use the acquire device information function or authentication function

If you cannot acquire the device information, or cannot use the department ID management function in the [Device Settings] sheet, check the following.

Cause 1.

The device is turned off, or the cable is not plugged in properly.

Remedy

Check the status of the device.

Cause 2.

The settings for your connection environment have not been configured correctly.

Remedy

Confirm the printable area of the device, and correct the print data in the application you are using.

In a print server environment

- Install the "Canon Driver Information Assist Service" in the server computer using the driver installer.
- Install TCP/IP as a protocol in your environment from the CD-ROM for the operating system you are using.

When using a USB connection or using a port connection environment in which you cannot use these functions

Use another connection environment such as TCP/IP network connection, etc.

You cannot use these functions with the following port connection environments:

- An environment in which computers are directly connected to the printer using SMB.
- An environment in which [Enable printer pooling] is selected in the [Ports] sheet of the printer properties screen.

Cause 3.

The name of the device is too long.

Remedy

Confirm that the number of characters in the name of the printer do not exceed the following values. If they do, change the name in the [General] or [Sharing] sheet of the printer properties screen.

- Name to share the printer with: 260 characters or less.
- Printer name: 209 characters or less.

This Font Software is licensed under the SIL Open Font License, Version 1.1.

This license is copied below, and is also available with a FAQ at: <http://scripts.sil.org/OFL>

SIL OPEN FONT LICENSE Version 1.1 - 26 February 2007

PREAMBLE

The goals of the Open Font License (OFL) are to stimulate worldwide development of collaborative font projects, to support the font creation efforts of academic and linguistic communities, and to provide a free and open framework in which fonts may be shared and improved in partnership with others.

The OFL allows the licensed fonts to be used, studied, modified and redistributed freely as long as they are not sold by themselves. The fonts, including any derivative works, can be bundled, embedded, redistributed and/or sold with any software provided that any reserved names are not used by derivative works. The fonts and derivatives, however, cannot be released under any other type of license. The requirement for fonts to remain under this license does not apply to any document created using the fonts or their derivatives.

DEFINITIONS

"Font Software" refers to the set of files released by the Copyright Holder(s) under this license and clearly marked as such. This may include source files, build scripts and documentation.

"Reserved Font Name" refers to any names specified as such after the copyright statement(s).

"Original Version" refers to the collection of Font Software components as distributed by the Copyright Holder(s).

"Modified Version" refers to any derivative made by adding to, deleting, or substituting -- in part or in whole -- any of the components of the Original Version, by changing formats or by porting the Font Software to a new environment.

"Author" refers to any designer, engineer, programmer, technical writer or other person who contributed to the Font Software.

PERMISSION & CONDITIONS

Permission is hereby granted, free of charge, to any person obtaining a copy of the Font Software, to use, study, copy, merge, embed, modify, redistribute, and sell modified and unmodified copies of the Font Software, subject to the following conditions:

- 1) Neither the Font Software nor any of its individual components, in Original or Modified Versions, may be sold by itself.
- 2) Original or Modified Versions of the Font Software may be bundled, redistributed and/or sold with any software, provided that each copy contains the above copyright notice and this license. These can be included either as stand-alone text files, human-readable headers or in the appropriate machine-readable metadata fields within text or binary files as long as those fields can be easily viewed by the user.
- 3) No Modified Version of the Font Software may use the Reserved Font Name(s) unless explicit written permission is granted by the corresponding Copyright Holder. This restriction only applies to the primary font name as presented to the users.
- 4) The name(s) of the Copyright Holder(s) or the Author(s) of the Font Software shall not be used to promote, endorse or advertise any Modified Version, except to acknowledge the contribution(s) of the Copyright Holder(s) and the Author(s) or with their explicit written permission.
- 5) The Font Software, modified or unmodified, in part or in whole, must be distributed entirely under this license, and must not be distributed under any other license. The requirement for fonts to remain under this license does not apply to any document created using the Font Software.

TERMINATION

This license becomes null and void if any of the above conditions are not met.

DISCLAIMER

THE FONT SOFTWARE IS PROVIDED "AS IS", WITHOUT WARRANTY OF ANY KIND, EXPRESS OR IMPLIED, INCLUDING BUT NOT LIMITED TO ANY WARRANTIES OF MERCHANTABILITY, FITNESS FOR A PARTICULAR PURPOSE AND NONINFRINGEMENT OF COPYRIGHT, PATENT, TRADEMARK, OR OTHER RIGHT. IN NO EVENT SHALL THE COPYRIGHT HOLDER BE LIABLE FOR ANY CLAIM, DAMAGES OR OTHER LIABILITY, INCLUDING ANY GENERAL, SPECIAL, INDIRECT, INCIDENTAL, OR CONSEQUENTIAL DAMAGES, WHETHER IN AN ACTION OF CONTRACT, TORT OR OTHERWISE, ARISING FROM, OUT OF THE USE OR INABILITY TO USE THE FONT SOFTWARE OR FROM OTHER DEALINGS IN THE FONT SOFTWARE.